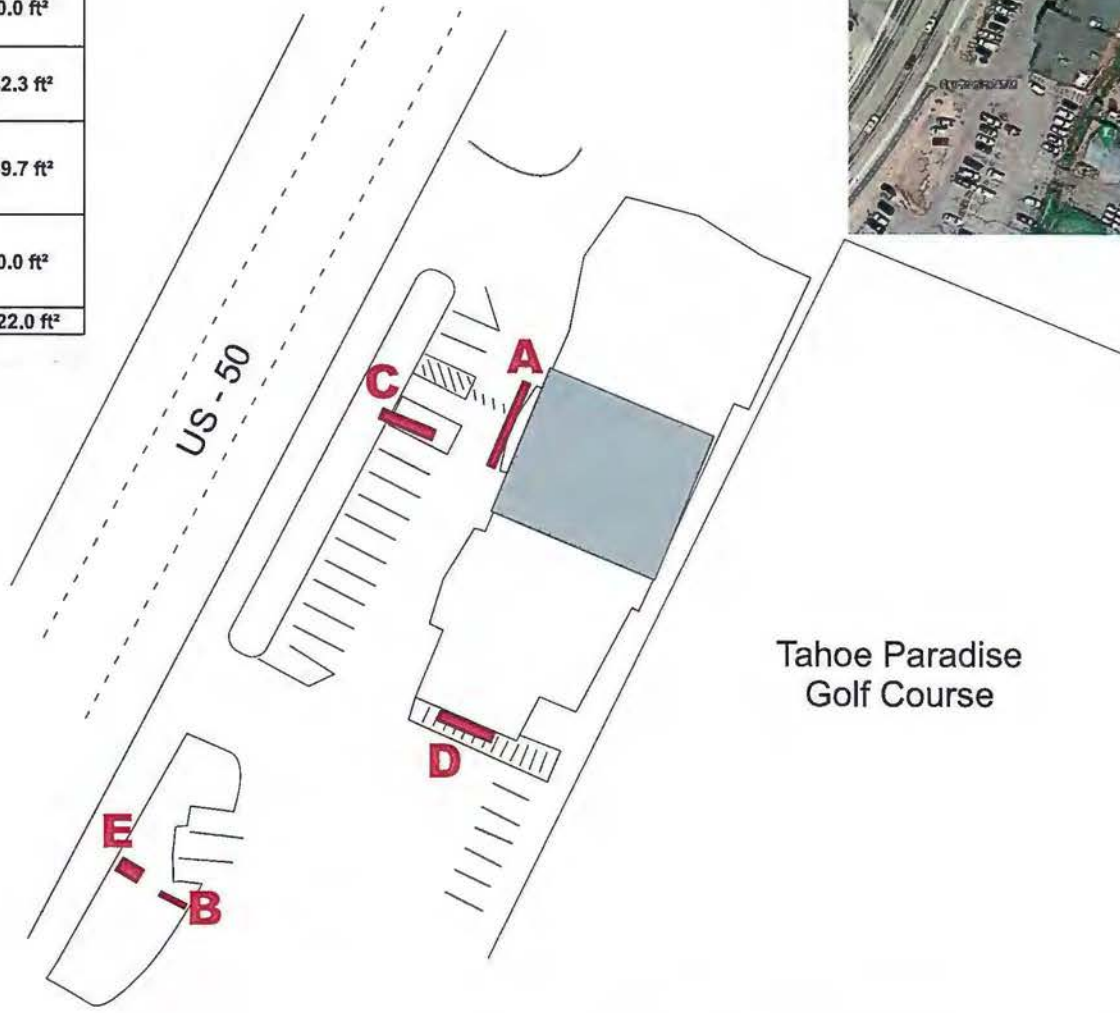


SIGN	DESCRIPTION	PROPOSED
A	Raceway mounted face lit channel letters	40.0 ft ²
B	Remove Pole sign to grade.	0.0 ft ²
C	Reface existing double faced monument sign.	42.3 ft ²
D	Face lit channel letters	39.7 ft ²
E	Wood Hut/Electrical Pump House - no changes	0.0 ft ²
TOTALS		122.0 ft²



Tahoe Paradise
Golf Course

APPROVED
EL DORADO COUNTY
PLANNING COMMISSION
DATE February 13, 2020
BY Tiffany Schmid Drake
EXECUTIVE SECRETARY

Exhibit F-Preliminary Site Plan



3707 ELECTRO WAY
REDDING, CA 96002
(530) 223-2030
FAX (530) 223-2060
mchalesign.com

OWNERSHIP OF THIS DESIGN IS HELD BY McHALE SIGN INC. THIS DESIGN IS FOR PERSONAL USE, AND IS NOT TO BE SHOWN OUTSIDE YOUR ORGANIZATION, NOR IS TO BE COPIED, REPRODUCED, OR EXHIBITED IN ANY MANNER.

HOLIDAY
2977 US-50
South Lake Tahoe, CA

APPROVED BY: _____
DATE: _____

SCALE: 3/4" = 1'

THIS SIGN IS INTENDED TO BE INSTALLED IN ACCORDANCE WITH THE REQUIREMENTS OF ARTICLE 600 OF THE NATIONAL ELECTRICAL CODE INCLUDING PROPER GROUNDING AND BONDING OF THE SIGN
(A thorough site survey is required to obtain exact sizes for correct install. Clear and unobstructed access required behind wall for remote wiring but adequate blocking behind wall required for support. Primary 120 volt electric feed done by others.)

A



122"
from grade
to bottom of sign

APPROVED
EL DORADO COUNTY
PLANNING COMMISSION
DATE February 13, 2020
BY Tiffany Schmid /dre
EXECUTIVE SECRETARY



3707 ELECTRO WAY
REDDING, CA 96002
(530) 223-2030
FAX (530) 223-2060

mchalesign.com

OWNERSHIP OF THIS DESIGN IS HELD BY McHALE SIGN INC. THIS DESIGN IS FOR PERSONAL USE, AND IS NOT TO BE SHOWN OUTSIDE YOUR ORGANIZATION, NOR IS TO BE COPIED, REPRODUCED, OR EXHIBITED IN ANY MANNER.

HOLIDAY
2977 US-50
South Lake Tahoe, CA

APPROVED BY:

DATE:

SCALE: 3/4" = 1'

THIS SIGN IS INTENDED TO BE INSTALLED IN ACCORDANCE WITH THE REQUIREMENTS OF ARTICLE 600 OF THE NATIONAL ELECTRICAL CODE INCLUDING PROPER GROUNDING AND BONDING OF THE SIGN

(A thorough site survey is required to obtain exact sizes for correct install. Clear and unobstructed access required behind wall for remote wiring but adequate blocking behind wall required for support. Primary 120 volt electric lead done by others.)

2-5-19



A

Raceway mounted face lit channel letters
5" deep aluminum return, .177 acrylic faces, 1" black trim cap,
first surface vinyl, 3M White Diffuser Film 3635-70 (60% light transmission), 3M 3630-76 green, & 3M 3630-53 red
white led illumination, letters mounted to 5" aluminum raceway. 40 SqFt.

Exhibit G-Proposed Elevation, Holiday Entrance Wall Sign (A)

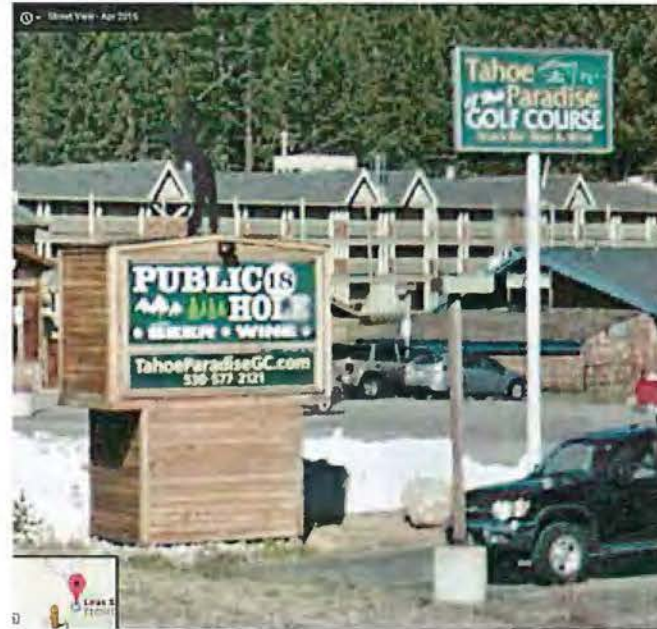
B



Existing

Remove pole sign to grade.

E



Wood Hut/Electrical Pump House
Leave as is.

APPROVED
EL DORADO COUNTY
PLANNING COMMISSION

DATE February 13, 2020

BY Tiffany Schmid/dre
EXECUTIVE SECRETARY

Exhibit H-Proposed Elevation, Tahoe Paradise Golf Monument Sign (B,E)



3707 ELECTRO WAY
REDDING, CA 96002
(530) 223-2030
FAX (530) 223-2060

mchalesign.com

OWNERSHIP OF THIS DESIGN IS HELD BY McHALE SIGN INC. THIS DESIGN IS FOR PERSONAL USE, AND IS NOT TO BE SHOWN OUTSIDE YOUR ORGANIZATION, NOR IS TO BE COPIED, REPRODUCED, OR EXHIBITED IN ANY MANNER.

HOLIDAY
2977 US-50
South Lake Tahoe, CA

APPROVED BY:

DATE:

SCALE: 3/4" = 1'

THIS SIGN IS INTENDED TO BE INSTALLED IN ACCORDANCE WITH THE REQUIREMENTS OF ARTICLE 600 OF THE NATIONAL ELECTRICAL CODE INCLUDING PROPER GROUNDING AND BONDING OF THE SIGN

(A thorough site survey is required to obtain exact sizes for correct install. Clear and unobstructed access required behind wall for remote wiring but adequate blocking behind wall required for support. Primary 120 volt electric feed done by others.)

2-5-19

C



Existing



Proposed

APPROVED
 EL DORADO COUNTY
 PLANNING COMMISSION

DATE February 13, 2020

BY Tiffany Schmid/dre
 EXECUTIVE SECRETARY



Reface existing double faced monument sign
 New faces in sandblasted red cedar
 Graphics painted in 3 colors
 (Green PMS 7734, Red PMS 187, White)

63 3/8" h x 96" w 42.25sf

Exhibit I-Proposed Elevation, Holiday Monument Sign (C)



3707 ELECTRO WAY
 REDDING, CA 96002
 (530) 223-2030
 FAX (530) 223-2060

mchalesign.com

OWNERSHIP OF THIS DESIGN IS HELD BY McHALE SIGN INC. THIS DESIGN IS FOR PERSONAL USE, AND IS NOT TO BE SHOWN OUTSIDE YOUR ORGANIZATION, NOR IS TO BE COPIED, REPRODUCED, OR EXHIBITED IN ANY MANNER.

HOLIDAY
 2977 US-50
 South Lake Tahoe, CA

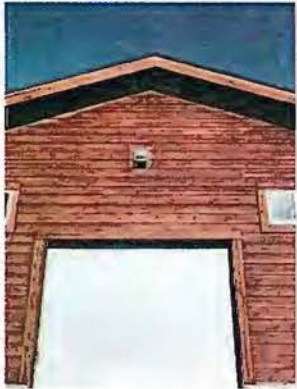
APPROVED BY: _____
 DATE: _____

SCALE: 3/4" = 1'

THIS SIGN IS INTENDED TO BE INSTALLED IN ACCORDANCE WITH THE REQUIREMENTS OF ARTICLE 600 OF THE NATIONAL ELECTRICAL CODE INCLUDING PROPER GROUNDING AND BONDING OF THE SIGN

(A thorough site survey is required to obtain exact sizes for correct install. Clear and unobstructed access required behind wall for remote wiring but adequate blocking behind wall required for support. Primary 120 volt electric feed done by others.)

D



Existing

APPROVED
 EL DORADO COUNTY
 PLANNING COMMISSION
 DATE February 13, 2020
 BY Tiffany Schmid, AIA
 EXECUTIVE SECRETARY

Remove existing light on building and install:
 Face lit channel letters, 5" deep aluminum return, .177 acrylic faces,
 1" black trim cap, first surface vinyl, 3M White Diffuser Film 3635-70
 (60% light transmission), 3M 3630-76 green, & 3M 3630-53 red,
 white led illumination.
 Flat aluminum backer panel with "MARKET" Channel Letters
 with White acrylic faces, 3M White Diffuser Film 3635-70
 Hook up to existing electrical 39.7 SqFt.



Exhibit J-Proposed Elevation, Holiday South-side Wall Sign (D)



3707 ELECTRO WAY
 REDDING, CA 96002
 (530) 223-2030
 FAX (530) 223-2060

mchalesign.com

OWNERSHIP OF THIS
 DESIGN IS HELD BY
 McHALE SIGN INC. THIS
 DESIGN IS FOR
 PERSONAL USE, AND IS
 NOT TO BE SHOWN
 OUTSIDE YOUR ORGAN-
 IZATION, NOR IS TO BE
 COPIED, REPRODUCED,
 OR EXHIBITED IN ANY
 MANNER.

HOLIDAY
 2977 US-50
 South Lake Tahoe, CA

APPROVED BY: _____
 DATE: _____

SCALE: 3/4" = 1'

THIS SIGN IS INTENDED TO
 BE INSTALLED IN
 ACCORDANCE WITH THE
 REQUIREMENTS OF
 ARTICLE 600 OF THE
 NATIONAL ELECTRICAL
 CODE INCLUDING PROPER
 GROUNDING AND BONDING
 OF THE SIGN
 (A thorough site survey is
 required to obtain exact
 sizes for correct install. Clear
 and unobstructed access
 required behind wall for remote
 wiring but adequate blocking
 behind wall required for
 support. Primary 120 volt
 electric feed done by others.)

2-5-19