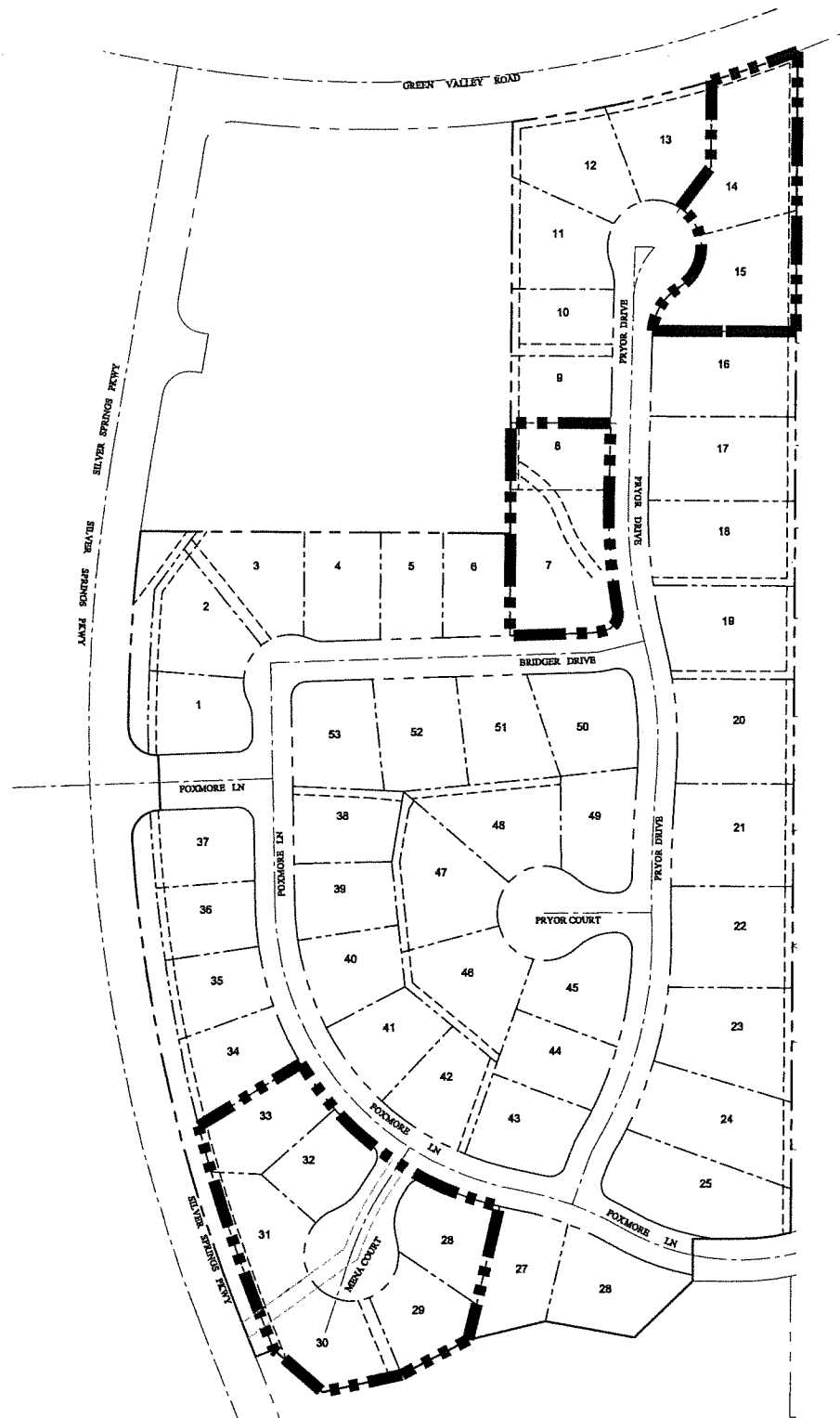
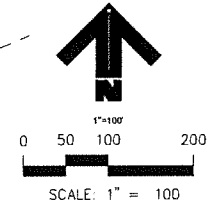


SILVER SPRINGS UNIT 1 MAP AMENDMENT (OVERALL)

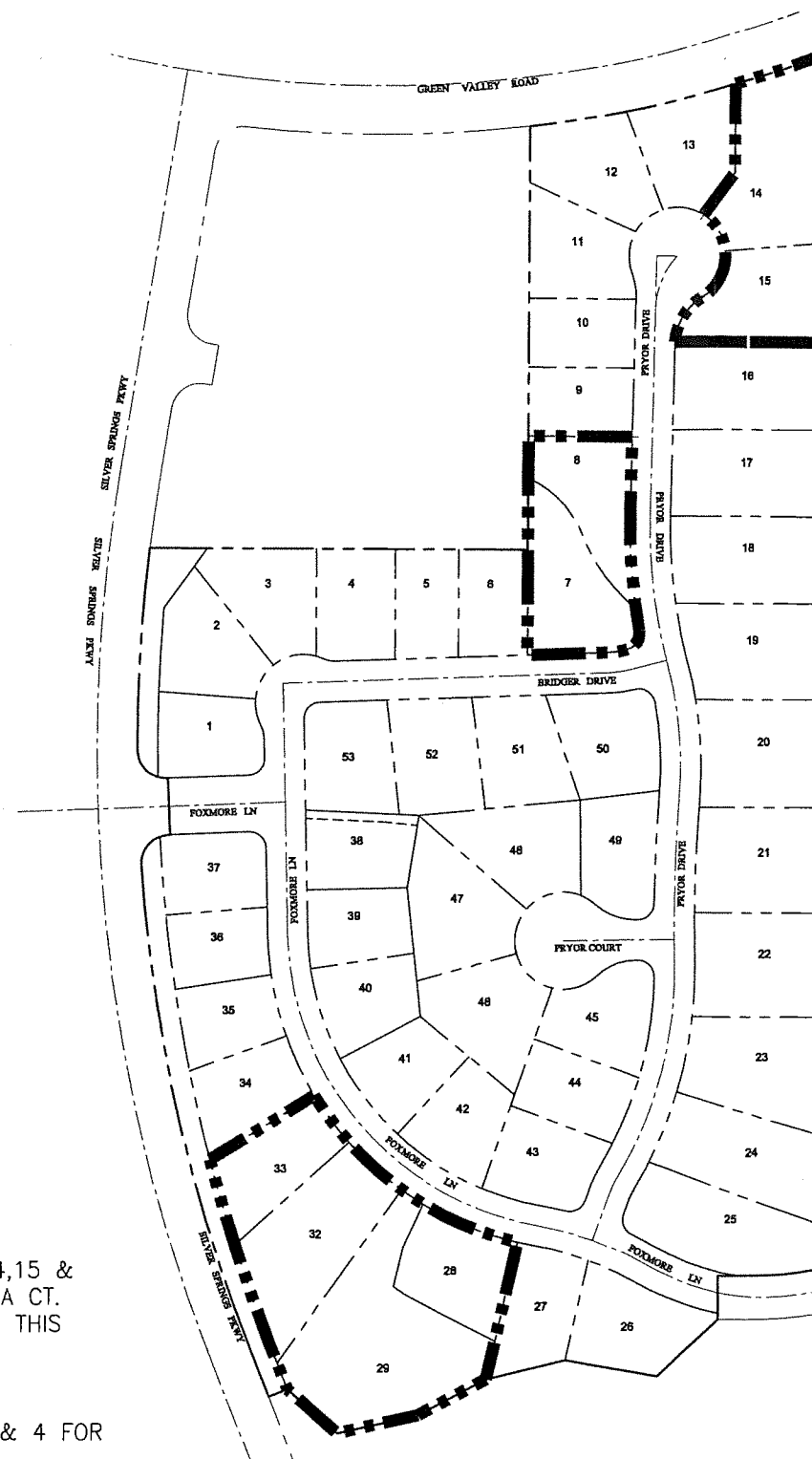
FEBRUARY 2019
SHEET 1 OF 4



RECORDED FINAL MAP CONDITIONS

ONLY LOTS 7,8,14,15 &
28 - 33 AT MENA CT.
ARE IMPACTED BY THIS
PROPOSED MAP
AMMENDMENT.

SEE SHEETS 2,3 & 4 FOR
LOT AREAS



PROPOSED LOTTING

2019 MAR - 1 AM 10:56
RECEIVED
PLANNING DEPARTMENT

APPROVED
EL DORADO COUNTY
PLANNING COMMISSION
Board of Supervisors
DATE June 4, 2019

BY Tiffany Schmidt/Cmt
EXECUTIVE SECRETARY

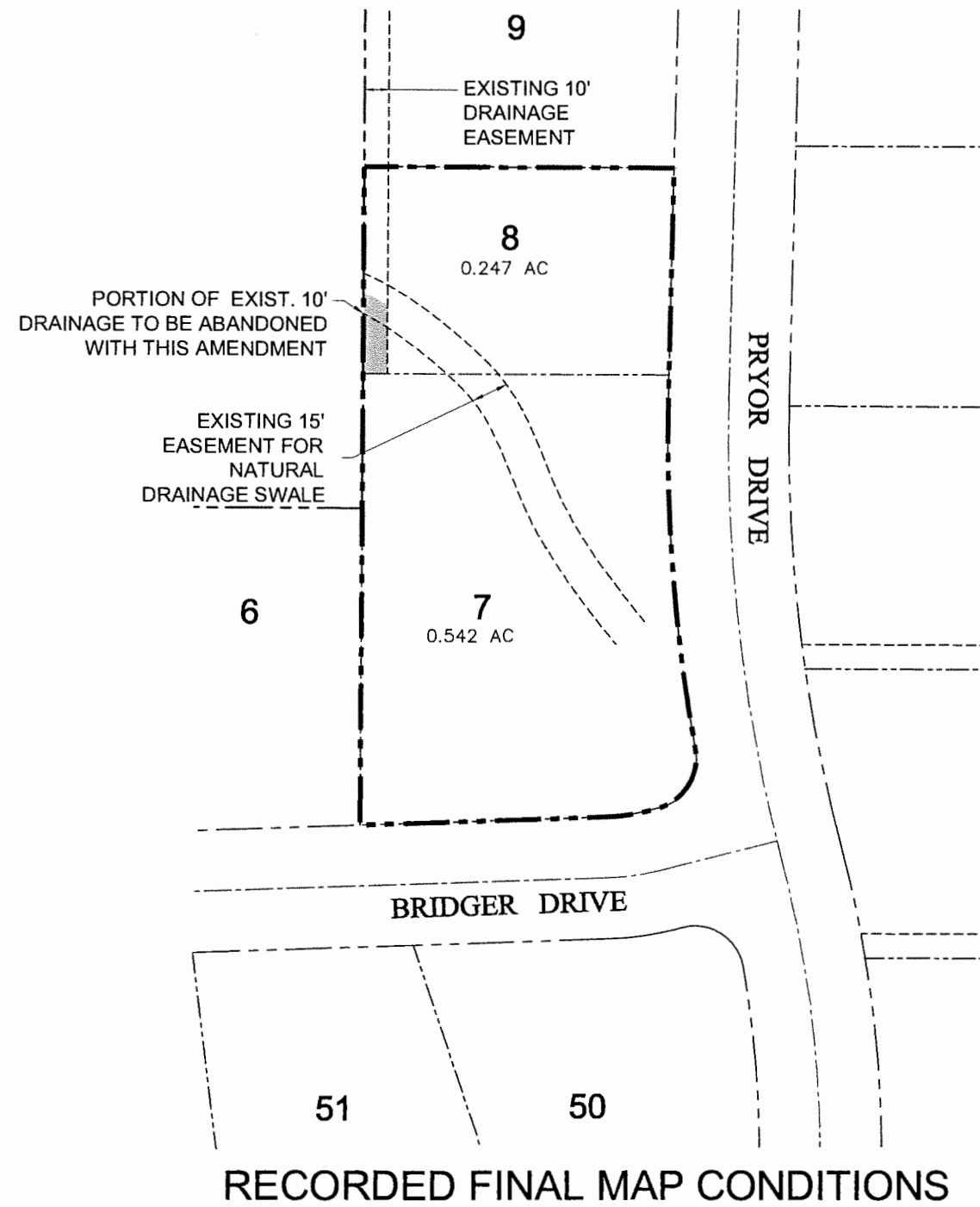
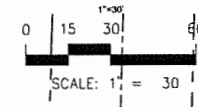


File: K:\Users\TAS\My Documents\TAS\Map Amendment\Map Amendment.dwg Feb 08, 2019 - 12:58pm ewhite

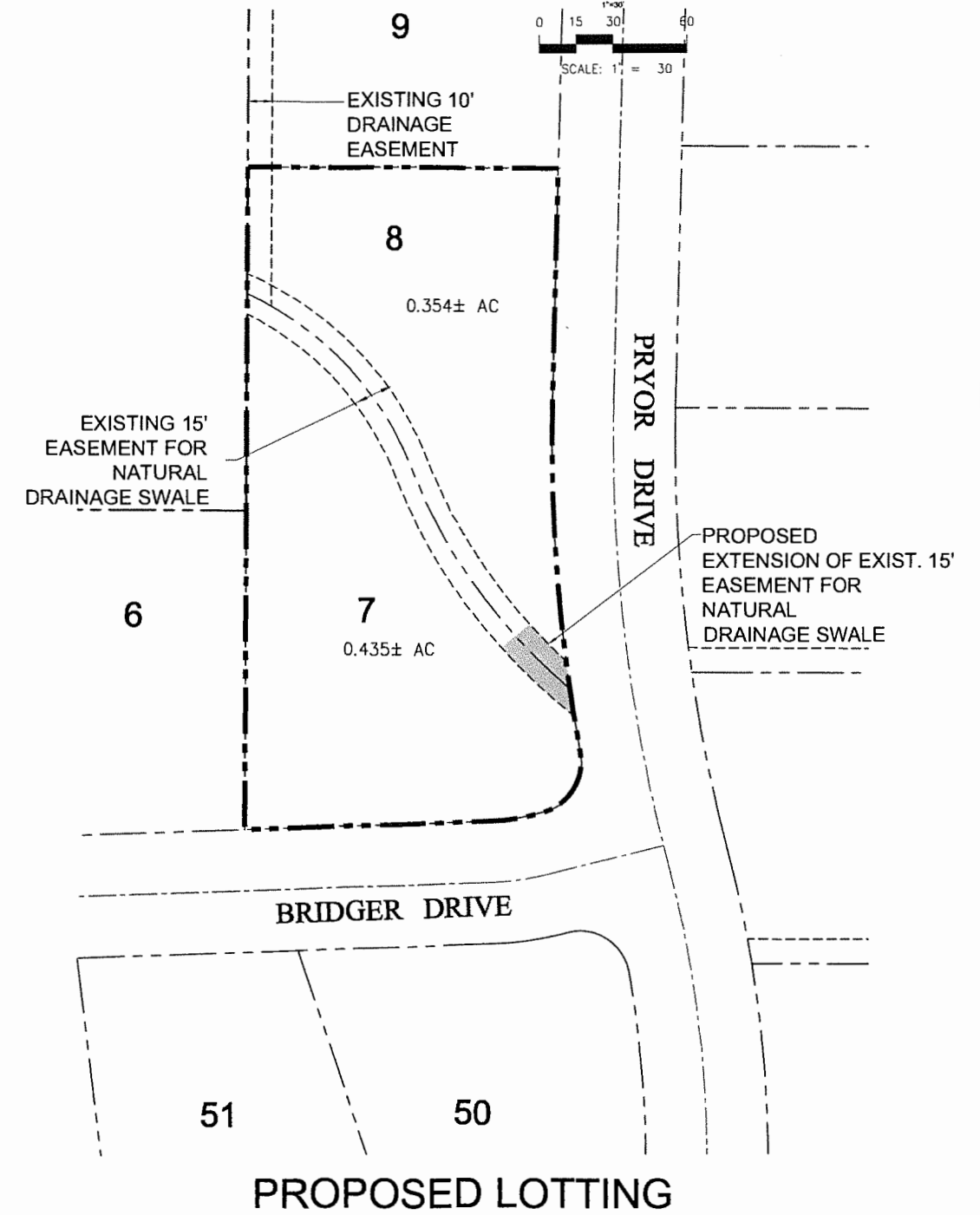
SILVER SPRINGS UNIT 1 MAP AMENDMENT (LOTS 7-8)

2019 MAR -1 AM 10:56
RECEIVED
PLANNING DEPARTMENT

FEBRUARY 2019
SHEET 2 OF 4



RECORDED FINAL MAP CONDITIONS

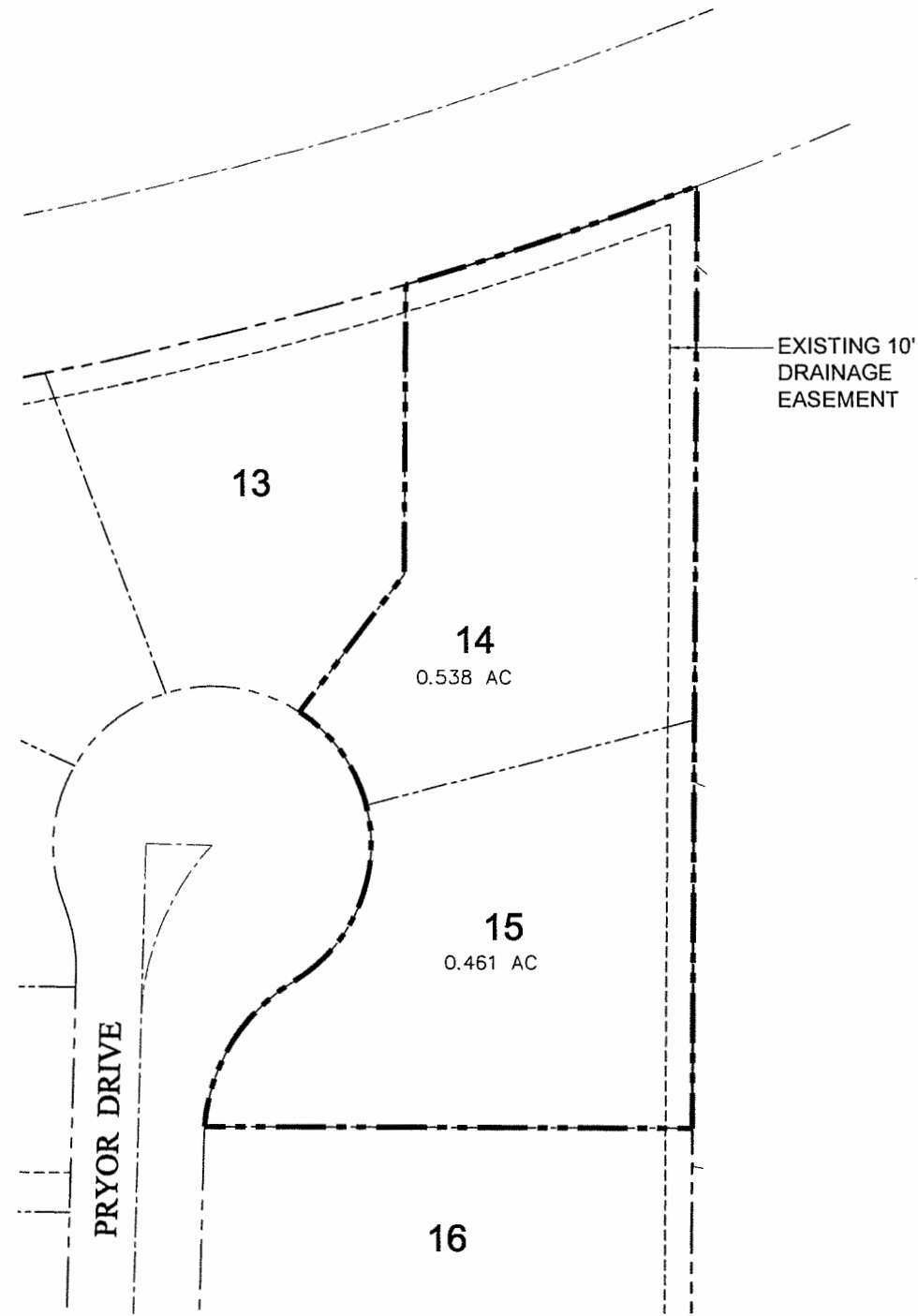
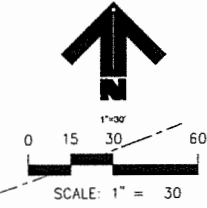


PROPOSED LOTTING

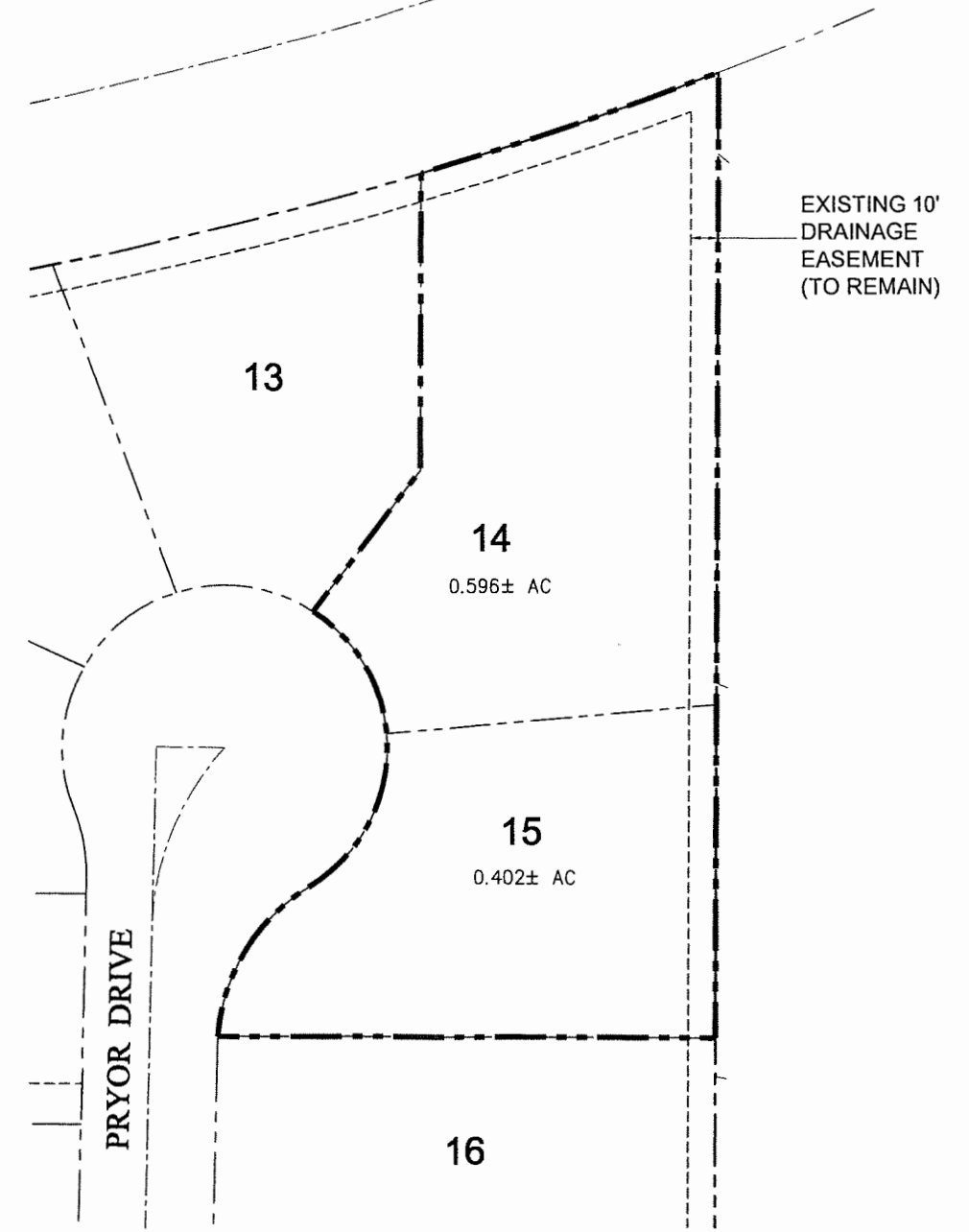
SILVER SPRINGS UNIT 1 MAP AMENDMENT (LOTS 14-15)

2019 MAR -1 AM 10: 56
RECEIVED
PLANNING DEPARTMENT

FEBRUARY 2019
SHEET 3 OF 4



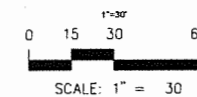
RECORDED FINAL MAP CONDITIONS



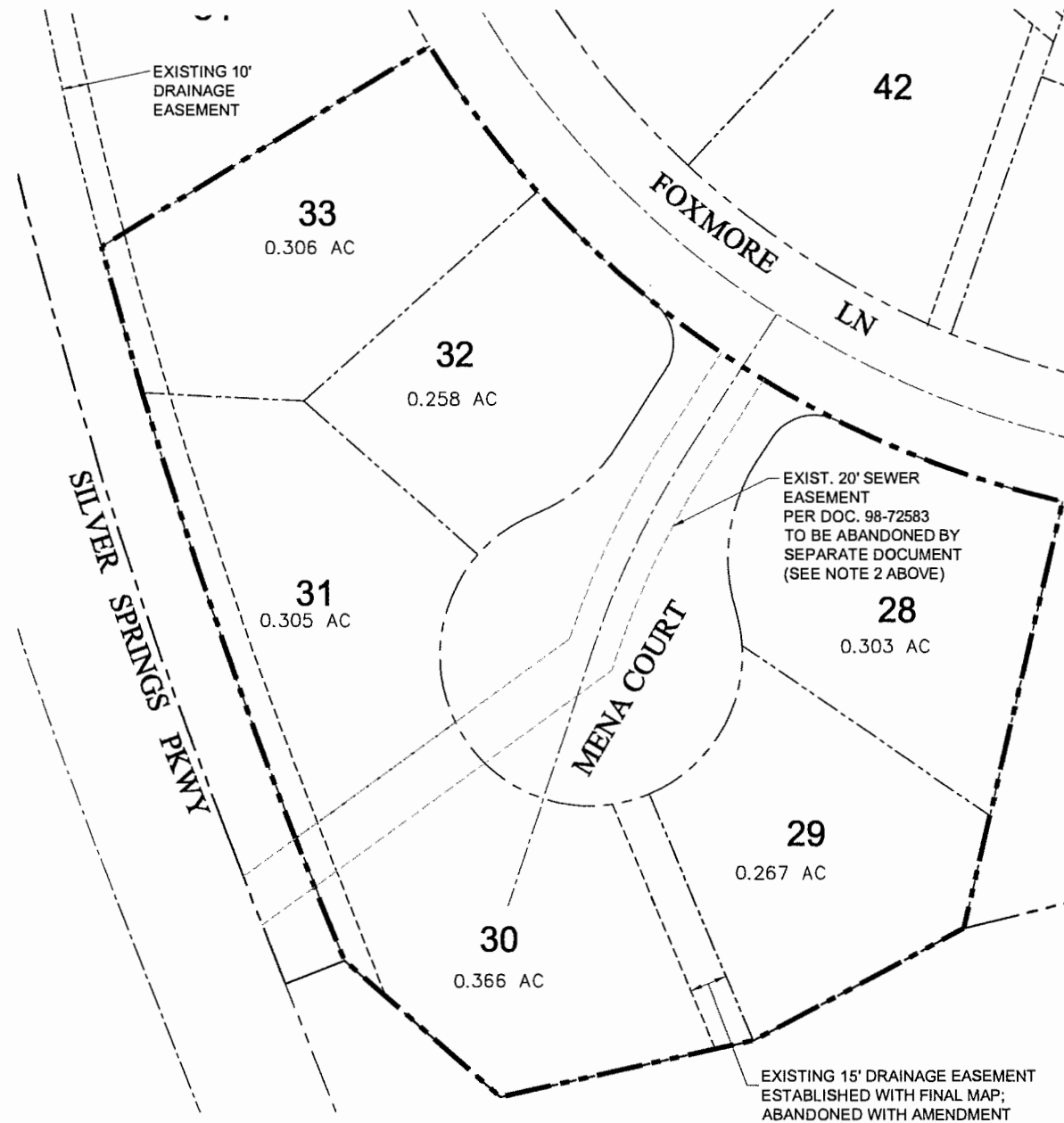
PROPOSED LOTTING

SILVER SPRINGS UNIT 1 MAP AMENDMENT (LOTS 28-33)

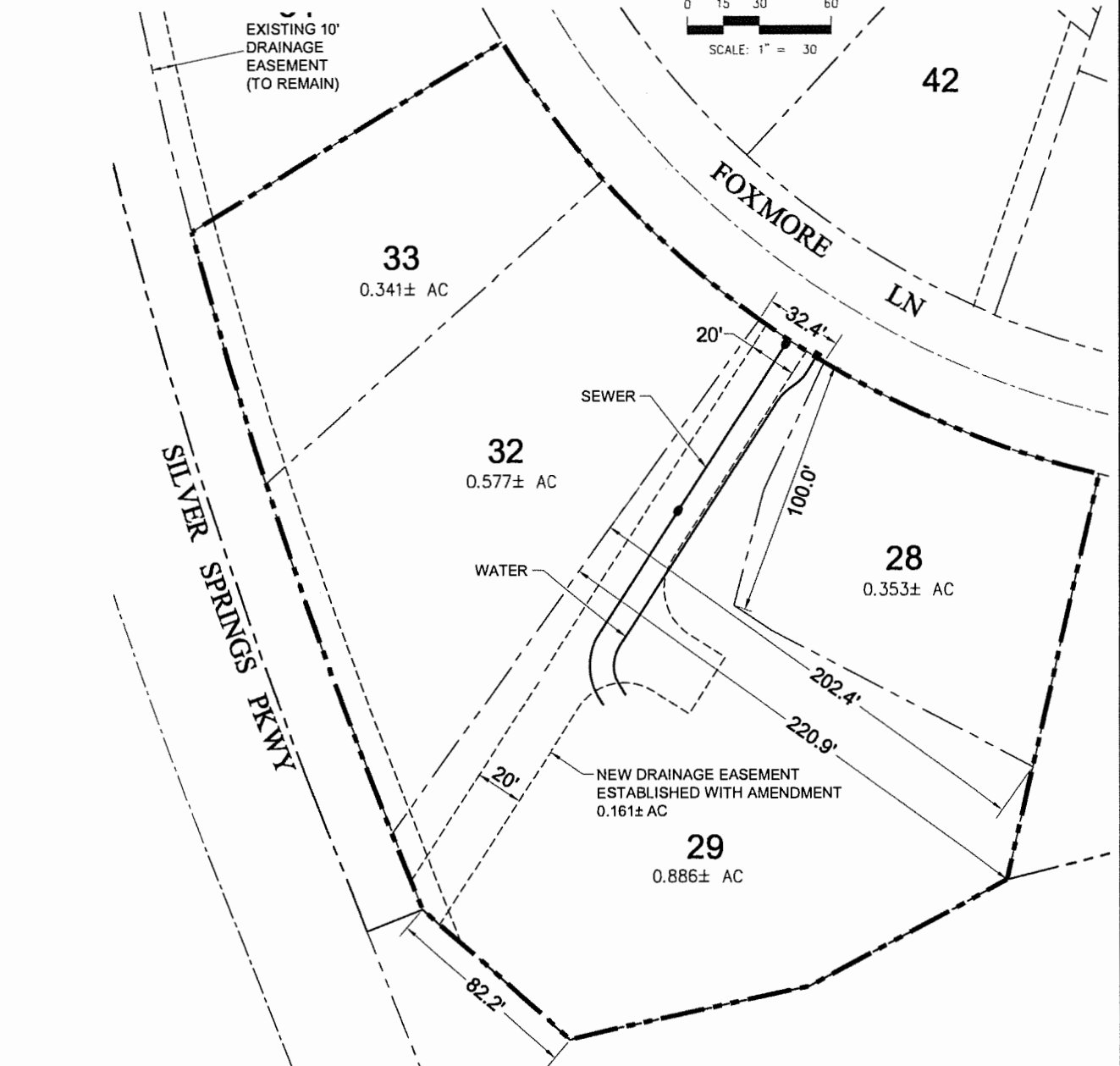
FEBRUARY 2019
SHEET 4 OF 4



- Public Utilities easements for underground wires, conduits, and pipelines and appurtenant fixtures, with the right to trim and remove limbs, trees and brush therefrom, over, under and across the common areas, Lots J and K, the front twelve and one half (12.50) feet of each lot shown hereon and the five (5.00) feet on both sides of all side lot lines extending from the street right-of-ways shown hereon along said property lines a distance of fifty (50.00) feet.
- Easement benefitting El Dorado Irrigation District (document 98-72583) to be abandoned by that District's Board of Directors upon District's acceptance of alternative improvements (Email from Brink 1/28/19).



RECORDED FINAL MAP CONDITIONS



PROPOSED LOTTING

RECEIVED
PLANNING DEPARTMENT
2019 MAR -1 AM 10:56