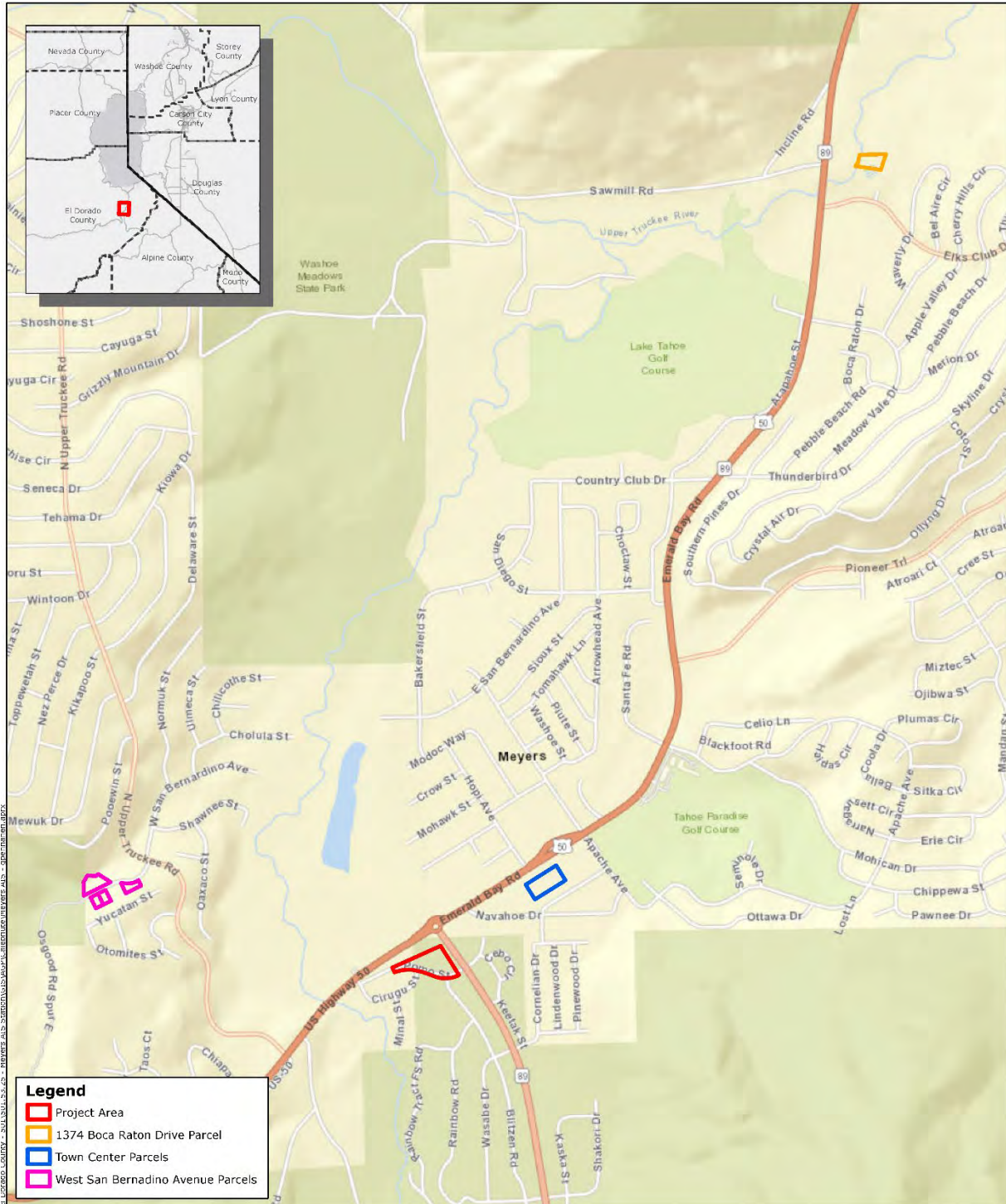

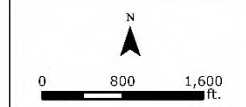


# Exhibit A - Land Exchange Location Map



	<p>Meyers Permanent Watercraft Inspection Station Land Exchange Location Map</p>		<p>FIGURE <b>4</b></p>
---	--	---	----------------------------

**Exhibit B – Zoning and Land Use Designations**

<b>County-owned Parcels</b>		
<b>Assessor's Parcel Numbers</b>	<b>Zoning Designation</b>	<b>Land Use Designation</b>
034-623-002	Residential (R1)	Residential (AP)
034-623-003	Residential (R1)	Residential (AP)
034-623-006	Residential (R1)	Residential (AP)
034-622-007	Residential (R1)	Residential (AP)
033-191-006	Recreational Facilities, Low-Intensity (RF-L)	Recreation (AP)

<b>Conservancy-owned Parcels</b>		
<b>Assessor's Parcel Numbers</b>	<b>Zoning Designation</b>	<b>Land Use Designation</b>
034-300-025	Meyers Recreation (MAP-4)	Recreation
034-300-026	Meyers Recreation (MAP-4)	Recreation
034-300-027	Meyers Recreation (MAP-4)	Recreation
034-300-028	Meyers Recreation (MAP-4)	Recreation
034-331-015	Meyers Community Center (MAP-1)	Mixed Use – Town Center
034-331-023	Meyers Community Center (MAP-1)	Mixed Use – Town Center

## Exhibit C

### List of Relevant General Plan, Regional Plan, or Meyers Area Plan Goals, Objectives, or Policies

#### El Dorado County General Plan

- Land Use Element Policy 2.2.2.4: The purpose of the Ecological Preserve (-EP) overlay designation is to identify those properties in public or private ownership which have potential to be established or have been established as habitat preserve areas for rare or endangered plant and animal species and/or critical wildlife habitat and/or natural communities of high quality or of Statewide importance and/or Stream Environment Zones (SEZ) as established in the Tahoe Basin. Ecological preserves may be established by private contract and/or memoranda of understanding affecting interested public agencies.
  - A. The Ecological Preserve overlay designation shall be combined with a basic land use designation that is appropriate for the area. The overlay will enable the land use densities or building intensities for a discretionary project to be transferred to other lands, clustered, or otherwise mitigated to maintain the Preserve.
  - B. The implementation strategies for the designated Ecological Preserve overlay lands shall be developed and approved by the Board of Supervisors prior to the designation taking effect. Implementation strategies shall not change the base land use designation.
  - C. Within the Tahoe Basin, the Ecological Preserve overlay shall apply to SEZ as established by Section 37.3 of the Tahoe Regional Planning Agency Code of Ordinances
- Land Use Element Policy 2.10.1.2: The County shall work with the Tahoe Regional Planning Agency (TRPA) and other appropriate state and federal agencies to identify lands capable of supporting affordable housing development without jeopardizing attainment of the Environmental Thresholds identified by TRPA.
- Conservation and Open Space Element Objective 7.4.2: IDENTIFY AND PROTECT RESOURCES – Identification and protection, where feasible, of critical fish and wildlife habitat including deer winter, summer, and fawning ranges; deer migration routes; stream and river riparian habitat; lake shore habitat; fish spawning areas; wetlands; wildlife corridors; and diverse wildlife habitat.

#### Lake Tahoe Basin Regional Plan

- Vegetation Chapter – Policy VEG-1.10: Work to eradicate and prevent the spread of invasive species

- Land Use Chapter
  - Policy LU-1.2: Redeveloping existing town centers is a high priority
  - Policy LU-3.4: Existing development patterns in residential neighborhoods outside of centers and environmentally sensitive lands should be maintained with no significant change
  - Policy LU- 3.8: TRPA supports sensitive land and development right acquisition programs that prioritize the retirement of development and the restoration of sensitive land
- Open Space Chapter – Policy OS-1.1: Management practices in open space that provide for the long term health and protection of the resources shall be permitted when consistent with the other goals and policies of this plan

### Meyers Area Plan

- Land Use Chapter - Goal 1: Encourage land uses, development projects, and activities that will enhance the “year round” economy
- Environmental Conservation Chapter
  - Goal 1: Attain and maintain the environmental threshold carrying capacity standards
  - Goal 4: Protect and enhance SEZs
  - Goal 5: Take an active role in the planning and review of nearby projects which may impact Meyers