

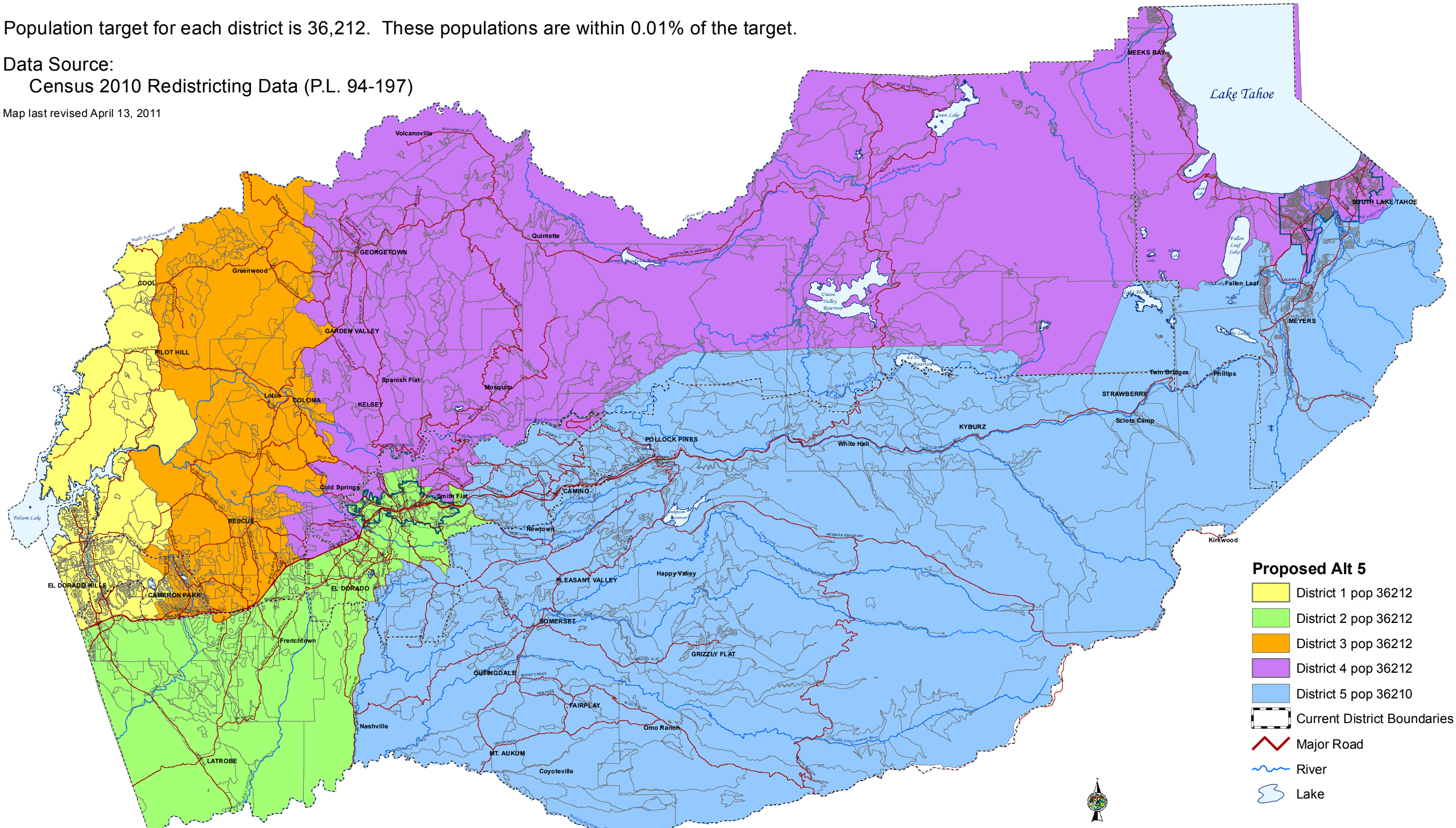
Alternative 5 Districts divided by Highway 50 up to Placerville - City of Placerville in District 2 and City of South Lake Tahoe in District 4.

Population target for each district is 36,212. These populations are within 0.01% of the target.

Data Source:

Census 2010 Redistricting Data (P.L. 94-197)

Map last revised April 13, 2011



Proposed Alt 5

- District 1 pop 36212
- District 2 pop 36212
- District 3 pop 36212
- District 4 pop 36212
- District 5 pop 36210
- Current District Boundaries
- Major Road
- River
- Lake

0 3 6
Miles

Map displayed in State Plane Coordinate System
(NAD 1983 California Zone 2, feet)

County of El Dorado
State of California