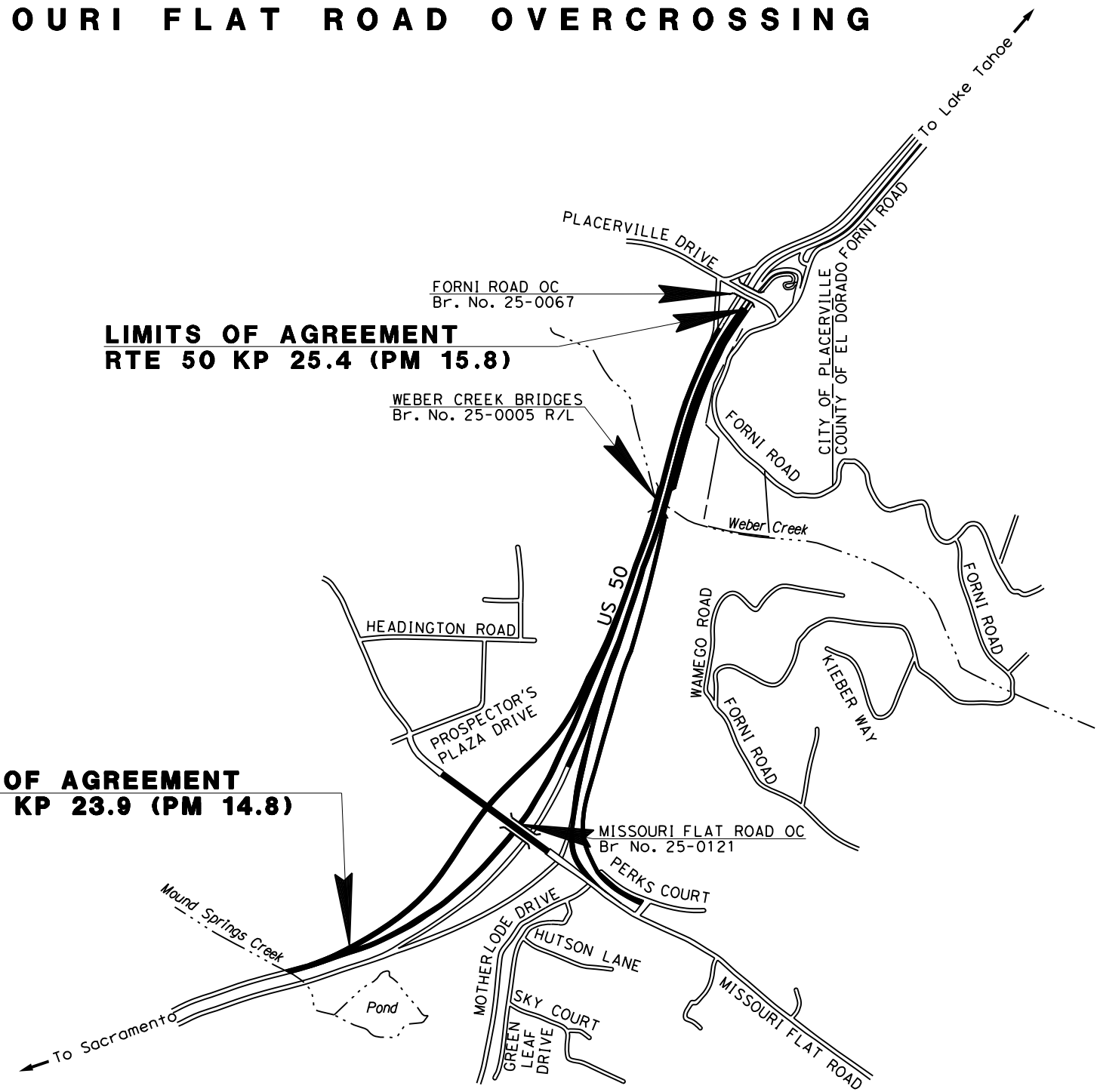
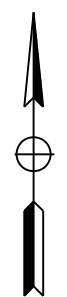


**STATE OF CALIFORNIA
DEPARTMENT OF TRANSPORTATION
FREEWAY MAINTENANCE AGREEMENT
STATE HIGHWAY
IN EL DORADO COUNTY
NEAR PLACERVILLE
ON US 50 FROM 0.7 km WEST
TO 1.2 km EAST OF THE US 50
MISSOURI FLAT ROAD OVERCROSSING**

DIST	COUNTY	ROUTE	KM (MILES) POST TOTAL PROJECT	SHEET NO.	TOTAL SHEETS
03	ED	50	23.9/25.4 (14.8/15.8)	1	9



**LIMITS OF AGREEMENT
RTE 50 KP 25.4 (PM 15.8)**

**LIMITS OF AGREEMENT
RTE 50 KP 23.9 (PM 14.8)**

ALL DIMENSIONS ARE IN METERS UNLESS OTHERWISE SHOWN

EXHIBIT A

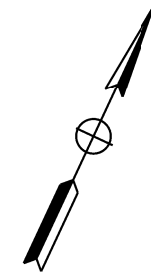
NO SCALE

16-1046 C 1 of 9

SHEET -1

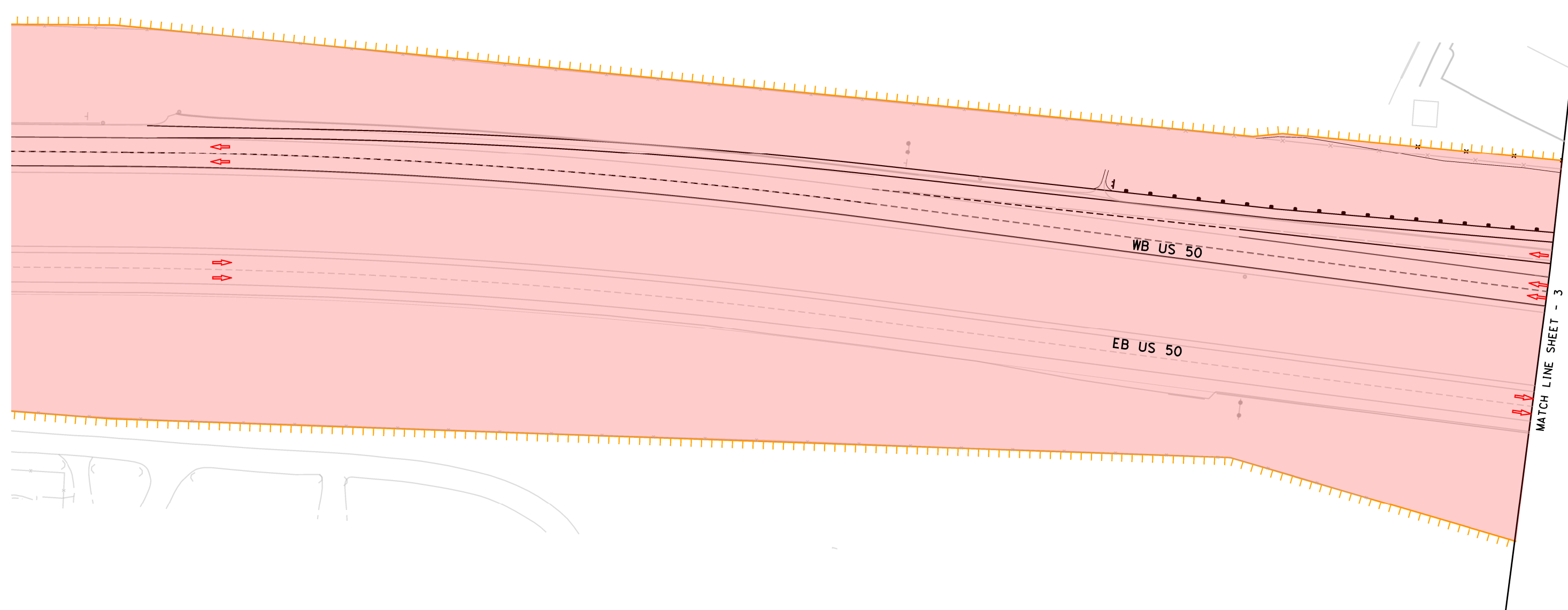
* LINES SHOWN AS BLUE SHALL BE MAINTAINED BY COUNTY AT COUNTY EXPENSE.

DIST	COUNTY	LOCATION CODE	KM (MILES) TOTAL PROJECT	POST	SHEET No.	TOTAL SHEETS
03	ED	50	23.9/25.4 (14.8/15.8)		2	9



LEGEND:

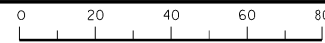
- TO BE MAINTAINED BY COUNTY AT COUNTY EXPENSE
- STATE MAINTAINS AT STATE EXPENSE
- CALTRANS R/W ACCESS CONTROL
- DIRECTION OF TRAFFIC
- CHAIN LINK FENCE *
- METAL BEAM GUARD RAILING *
- OVERHEAD SIGN
- RETAINING WALL *
- CONCRETE BARRIER *
- CHAIN LINK GATE *
- TUBULAR BICYCLE RAILING *
- ROCK LINED DITCH *
- CABLE RAILING *
- FENCE RAILING *
- ROADSIDE SIGN (ONE OR TWO POST) *
- DRAINAGE INLET *



ALL DIMENSIONS ARE IN METERS UNLESS OTHERWISE SHOWN

EXHIBIT A
SCALE 1:500

RELATIVE BORDER SCALE IS IN MILLIMETERS



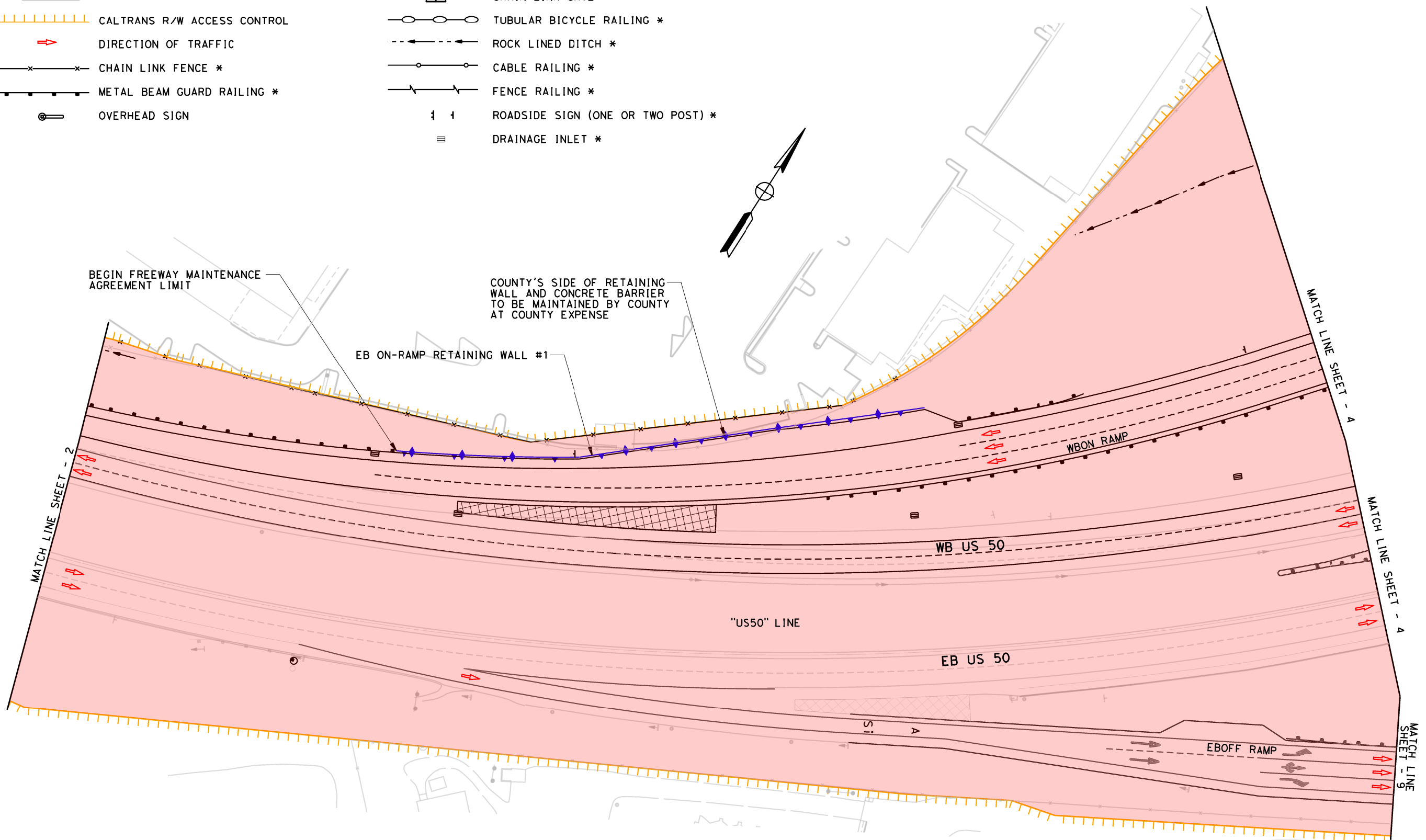
* LINES SHOWN AS BLUE SHALL BE MAINTAINED BY COUNTY AT COUNTY EXPENSE.

DIST	COUNTY	LOCATION CODE	KM (MILES) TOTAL PROJECT	POST TOTAL PROJECT	SHEET No.	TOTAL SHEETS
03	ED	50	23.9/25.4 (14.8/15.8)		3	9



LEGEND:

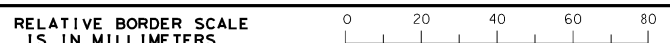
- TO BE MAINTAINED BY COUNTY AT COUNTY EXPENSE
- STATE MAINTAINS AT STATE EXPENSE
- CALTRANS R/W ACCESS CONTROL
- DIRECTION OF TRAFFIC
- CHAIN LINK FENCE *
- METAL BEAM GUARD RAILING *
- OVERHEAD SIGN
- RETAINING WALL *
- CONCRETE BARRIER *
- CHAIN LINK GATE *
- TUBULAR BICYCLE RAILING *
- ROCK LINED DITCH *
- CABLE RAILING *
- FENCE RAILING *
- ROADSIDE SIGN (ONE OR TWO POST) *
- DRAINAGE INLET *



ALL DIMENSIONS ARE IN METERS UNLESS OTHERWISE SHOWN

EXHIBIT A

SCALE 1:500
16-1046 C 3 of 9



DIST	COUNTY	LOCATION CODE	KM (MILES) TOTAL PROJECT	POST TOTAL PROJECT	SHEET No.	TOTAL SHEETS
03	ED	50	23.9/25.4 (14.8/15.8)		4	9



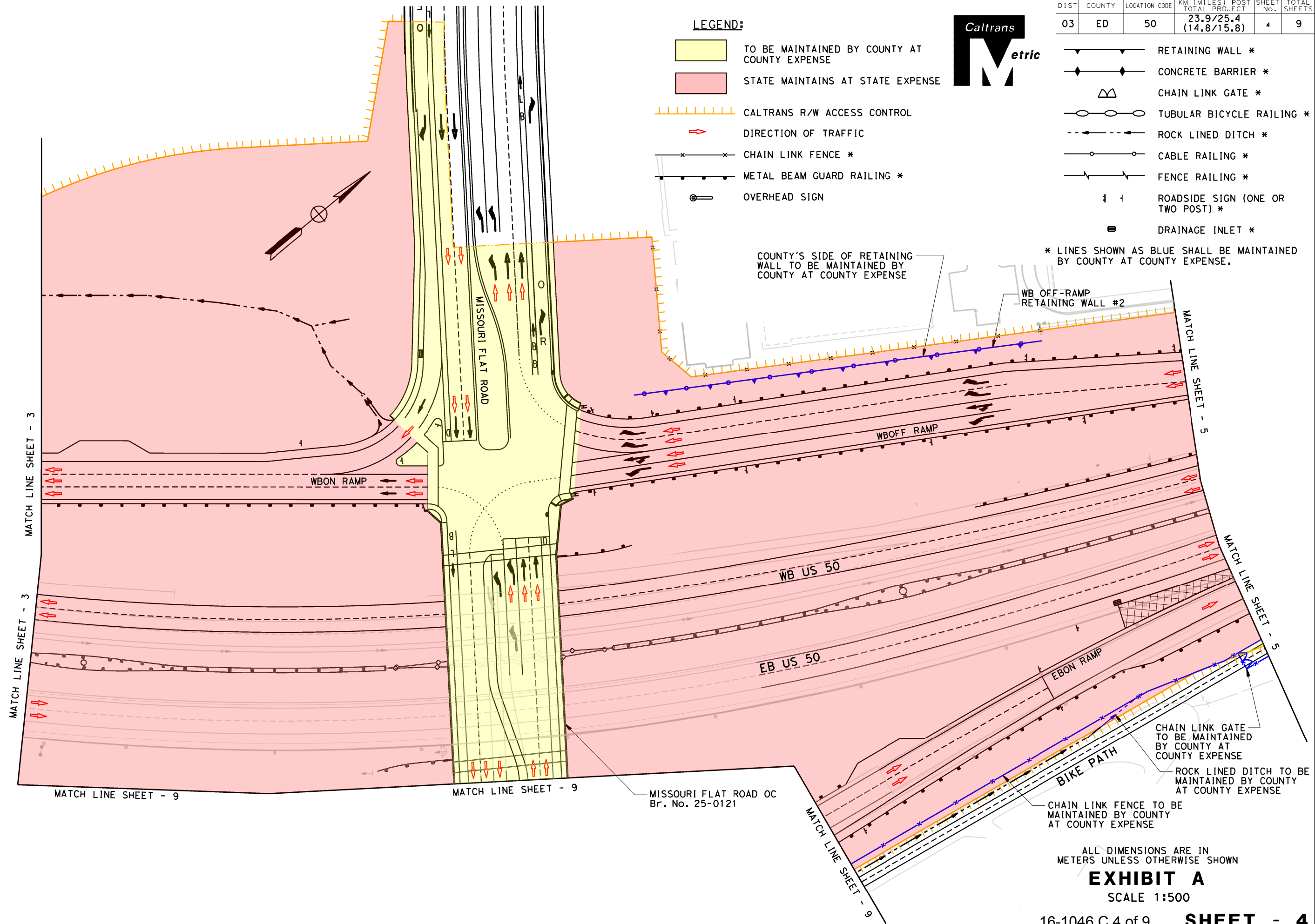
LEGEND:

- TO BE MAINTAINED BY COUNTY AT COUNTY EXPENSE
- STATE MAINTAINS AT STATE EXPENSE
- CALTRANS R/W ACCESS CONTROL
- DIRECTION OF TRAFFIC
- CHAIN LINK FENCE *
- METAL BEAM GUARD RAILING *
- OVERHEAD SIGN

- RETAINING WALL *
- CONCRETE BARRIER *
- CHAIN LINK GATE *
- TUBULAR BICYCLE RAILING *
- ROCK LINED DITCH *
- CABLE RAILING *
- FENCE RAILING *
- ROADSIDE SIGN (ONE OR TWO POST) *
- DRAINAGE INLET *

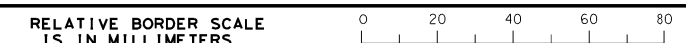
COUNTY'S SIDE OF RETAINING WALL TO BE MAINTAINED BY COUNTY AT COUNTY EXPENSE

* LINES SHOWN AS BLUE SHALL BE MAINTAINED BY COUNTY AT COUNTY EXPENSE.



ALL DIMENSIONS ARE IN METERS UNLESS OTHERWISE SHOWN

EXHIBIT A
SCALE 1:500



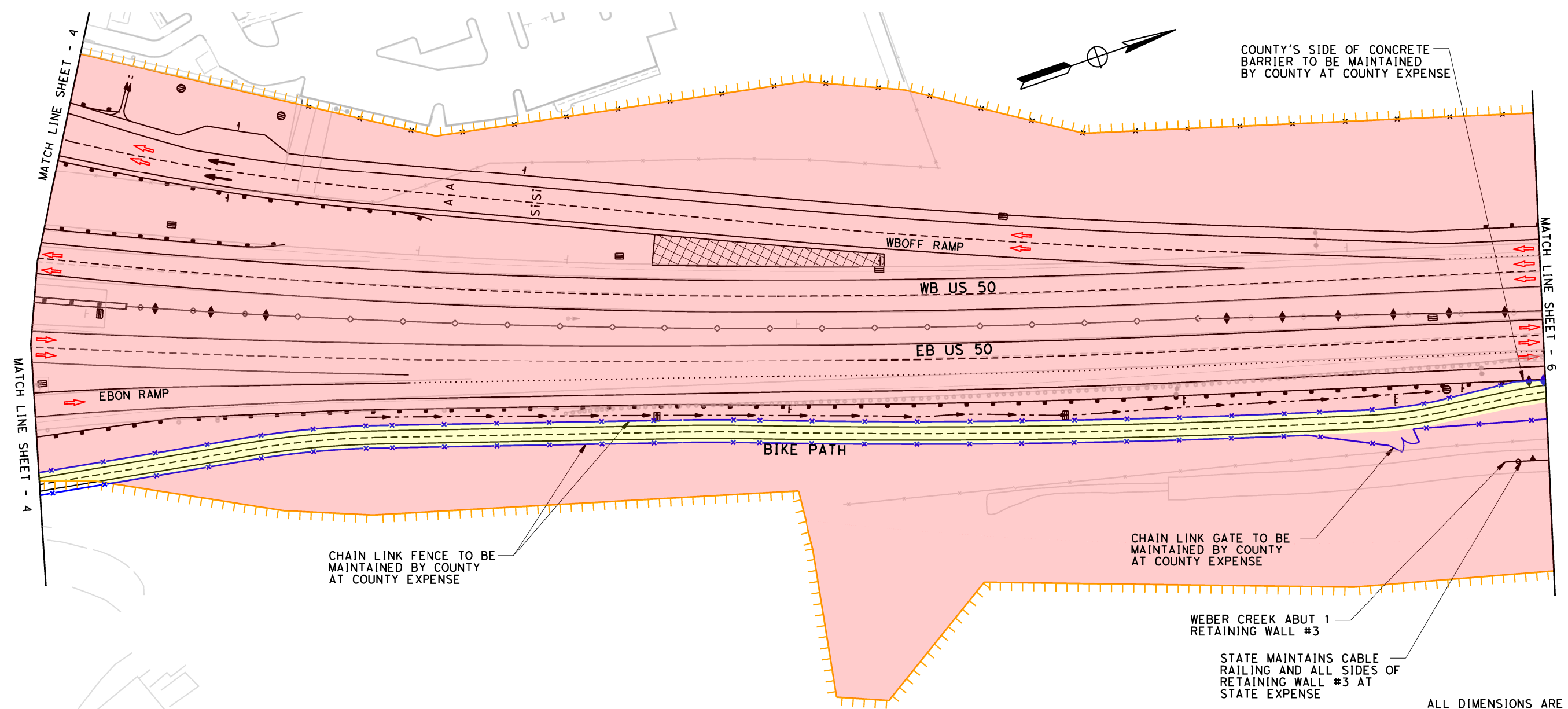
* LINES SHOWN AS BLUE SHALL BE MAINTAINED BY COUNTY AT COUNTY EXPENSE.



DIST	COUNTY	LOCATION CODE	KM (MILES) POST TOTAL PROJECT	SHEET No.	TOTAL SHEETS
03	ED	50	23.9/25.4 (14.8/15.8)	5	9

LEGEND:

- TO BE MAINTAINED BY COUNTY AT COUNTY EXPENSE
- STATE MAINTAINS AT STATE EXPENSE
- CALTRANS R/W ACCESS CONTROL
- DIRECTION OF TRAFFIC
- CHAIN LINK FENCE *
- METAL BEAM GUARD RAILING *
- OVERHEAD SIGN
- RETAINING WALL *
- CONCRETE BARRIER *
- CHAIN LINK GATE *
- TUBULAR BICYCLE RAILING *
- ROCK LINED DITCH *
- CABLE RAILING *
- FENCE RAILING *
- ROADSIDE SIGN (ONE OR TWO POST) *
- DRAINAGE INLET *



COUNTY'S SIDE OF CONCRETE BARRIER TO BE MAINTAINED BY COUNTY AT COUNTY EXPENSE

CHAIN LINK FENCE TO BE MAINTAINED BY COUNTY AT COUNTY EXPENSE

CHAIN LINK GATE TO BE MAINTAINED BY COUNTY AT COUNTY EXPENSE

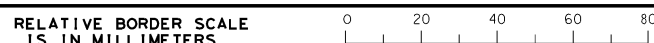
WEBER CREEK ABUT 1 RETAINING WALL #3

STATE MAINTAINS CABLE RAILING AND ALL SIDES OF RETAINING WALL #3 AT STATE EXPENSE

ALL DIMENSIONS ARE IN METERS UNLESS OTHERWISE SHOWN

EXHIBIT A

SCALE 1:500



DATE PLOTTED => 3/14/2016 TIME PLOTTED => 9:01:52 AM

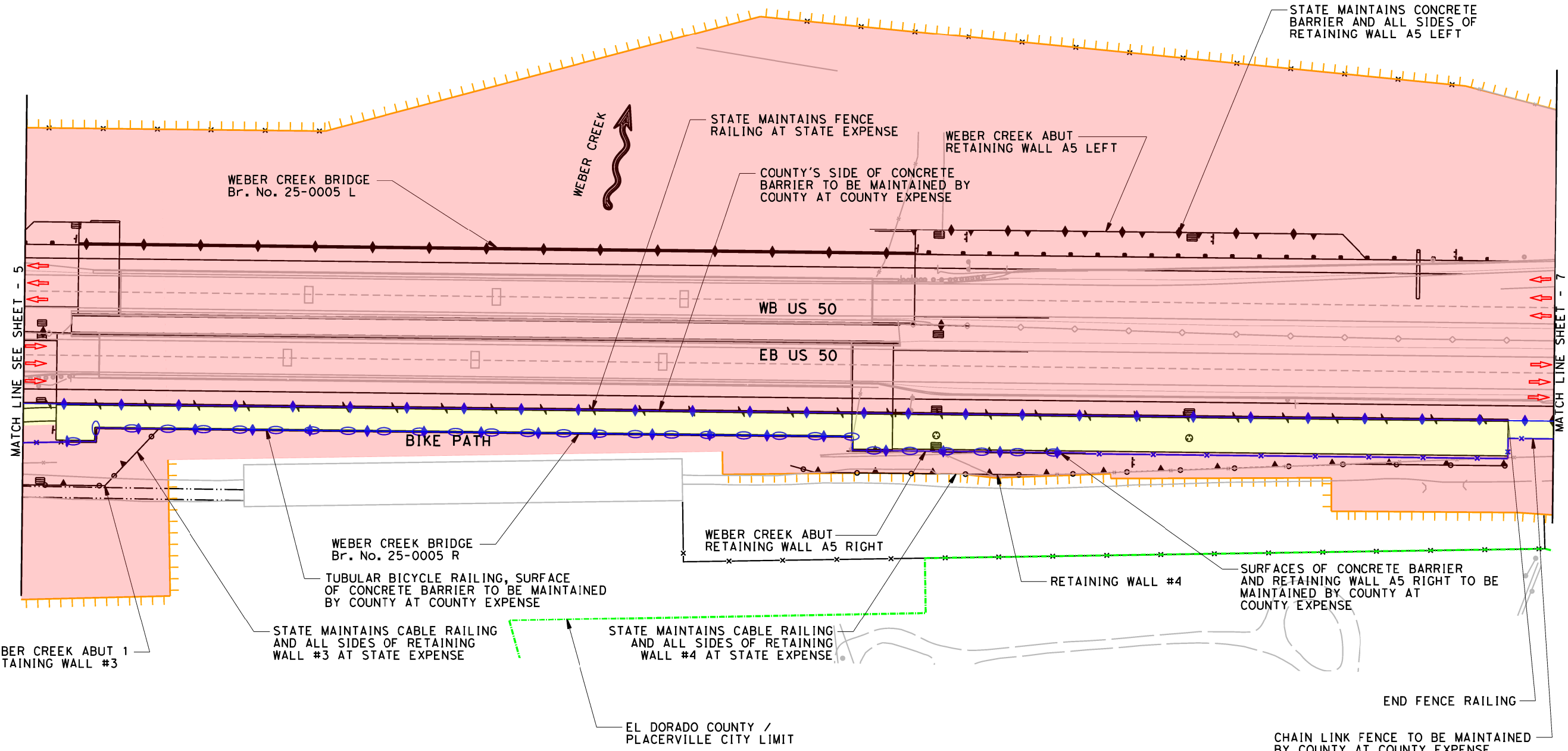
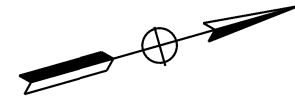
* LINES SHOWN AS BLUE SHALL BE MAINTAINED BY COUNTY AT COUNTY EXPENSE.

DIST	COUNTY	LOCATION CODE	KM (MILES) POST TOTAL PROJECT	SHEET No.	TOTAL SHEETS
03	ED	50	23.9/25.4 (14.8/15.8)	6	9



LEGEND:

- TO BE MAINTAINED BY COUNTY AT COUNTY EXPENSE
- STATE MAINTAINS AT STATE EXPENSE
- CALTRANS R/W ACCESS CONTROL
- DIRECTION OF TRAFFIC
- CHAIN LINK FENCE *
- METAL BEAM GUARD RAILING *
- OVERHEAD SIGN
- PLACERVILLE CITY LIMIT
- RETAINING WALL *
- CONCRETE BARRIER *
- CHAIN LINK GATE *
- TUBULAR BICYCLE RAILING *
- ROCK LINED DITCH *
- CABLE RAILING *
- FENCE RAILING *
- ROADSIDE SIGN (ONE OR TWO POST) *
- DRAINAGE INLET *



WEBER CREEK ABUT 1
RETAINING WALL #3

STATE MAINTAINS CABLE RAILING
AND ALL SIDES OF RETAINING
WALL #3 AT STATE EXPENSE

WEBER CREEK BRIDGE
Br. No. 25-0005 R

TUBULAR BICYCLE RAILING, SURFACE
OF CONCRETE BARRIER TO BE MAINTAINED
BY COUNTY AT COUNTY EXPENSE

STATE MAINTAINS CABLE RAILING
AND ALL SIDES OF RETAINING
WALL #4 AT STATE EXPENSE

WEBER CREEK ABUT
RETAINING WALL A5 RIGHT

STATE MAINTAINS FENCE
RAILING AT STATE EXPENSE

COUNTY'S SIDE OF CONCRETE
BARRIER TO BE MAINTAINED BY
COUNTY AT COUNTY EXPENSE

WEBER CREEK ABUT
RETAINING WALL A5 LEFT

SURFACES OF CONCRETE BARRIER
AND RETAINING WALL A5 RIGHT TO BE
MAINTAINED BY COUNTY AT
COUNTY EXPENSE

STATE MAINTAINS CONCRETE
BARRIER AND ALL SIDES OF
RETAINING WALL A5 LEFT

END FENCE RAILING

CHAIN LINK FENCE TO BE MAINTAINED
BY COUNTY AT COUNTY EXPENSE

EL DORADO COUNTY /
PLACERVILLE CITY LIMIT

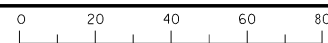
ALL DIMENSIONS ARE IN
METERS UNLESS OTHERWISE SHOWN

EXHIBIT A

SCALE 1:500

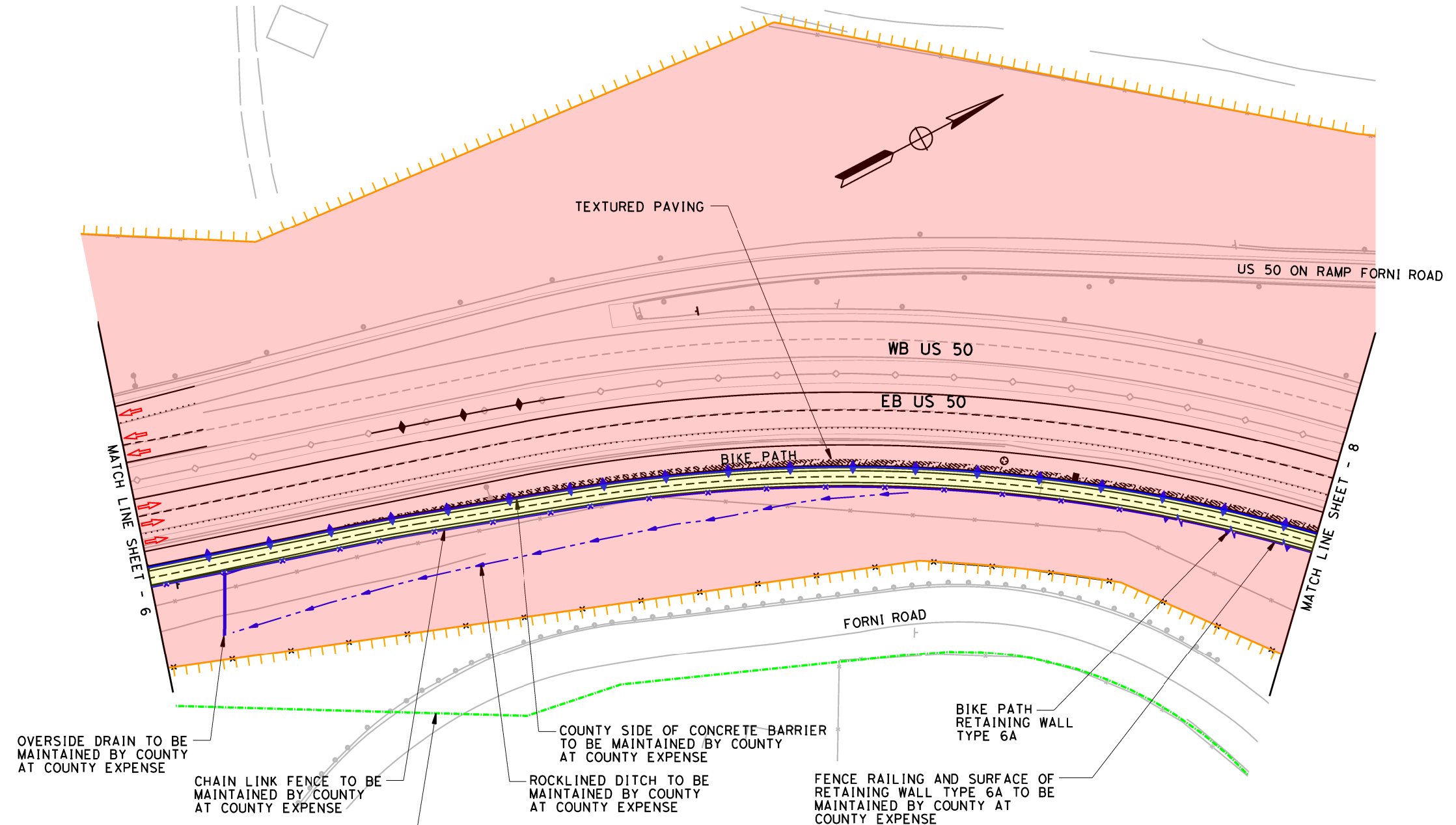
16-1046 C 6 of 9 **SHEET - 6**

RELATIVE BORDER SCALE
IS IN MILLIMETERS





DIST	COUNTY	LOCATION CODE	KM (MILES) TOTAL PROJECT	POST No.	SHEET No.	TOTAL SHEETS
03	ED	50	23.9/25.4 (14.8/15.8)		7	9



OVERSIDE DRAIN TO BE MAINTAINED BY COUNTY AT COUNTY EXPENSE

CHAIN LINK FENCE TO BE MAINTAINED BY COUNTY AT COUNTY EXPENSE

EL DORADO COUNTY / PLACERVILLE CITY LIMIT

COUNTY SIDE OF CONCRETE BARRIER TO BE MAINTAINED BY COUNTY AT COUNTY EXPENSE

ROCK LINED DITCH TO BE MAINTAINED BY COUNTY AT COUNTY EXPENSE

FENCE RAILING AND SURFACE OF RETAINING WALL TYPE 6A TO BE MAINTAINED BY COUNTY AT COUNTY EXPENSE

BIKE PATH RETAINING WALL TYPE 6A

LEGEND:

- TO BE MAINTAINED BY COUNTY AT COUNTY EXPENSE
- STATE MAINTAINS AT STATE EXPENSE
- CALTRANS R/W ACCESS CONTROL
- DIRECTION OF TRAFFIC
- CHAIN LINK FENCE *
- METAL BEAM GUARD RAILING *
- OVERHEAD SIGN
- PLACERVILLE CITY LIMIT

- RETAINING WALL *
- CONCRETE BARRIER *
- CHAIN LINK GATE *
- TUBULAR BICYCLE RAILING *
- ROCK LINED DITCH *
- CABLE RAILING *
- FENCE RAILING *
- ROADSIDE SIGN (ONE OR TWO POST) *
- DRAINAGE INLET *

* LINES SHOWN AS BLUE SHALL BE MAINTAINED BY COUNTY AT COUNTY EXPENSE.

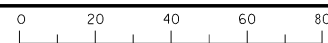
ALL DIMENSIONS ARE IN METERS UNLESS OTHERWISE SHOWN

EXHIBIT A

SCALE 1:500

16-1046 C 7 of 9 **SHEET - 7**

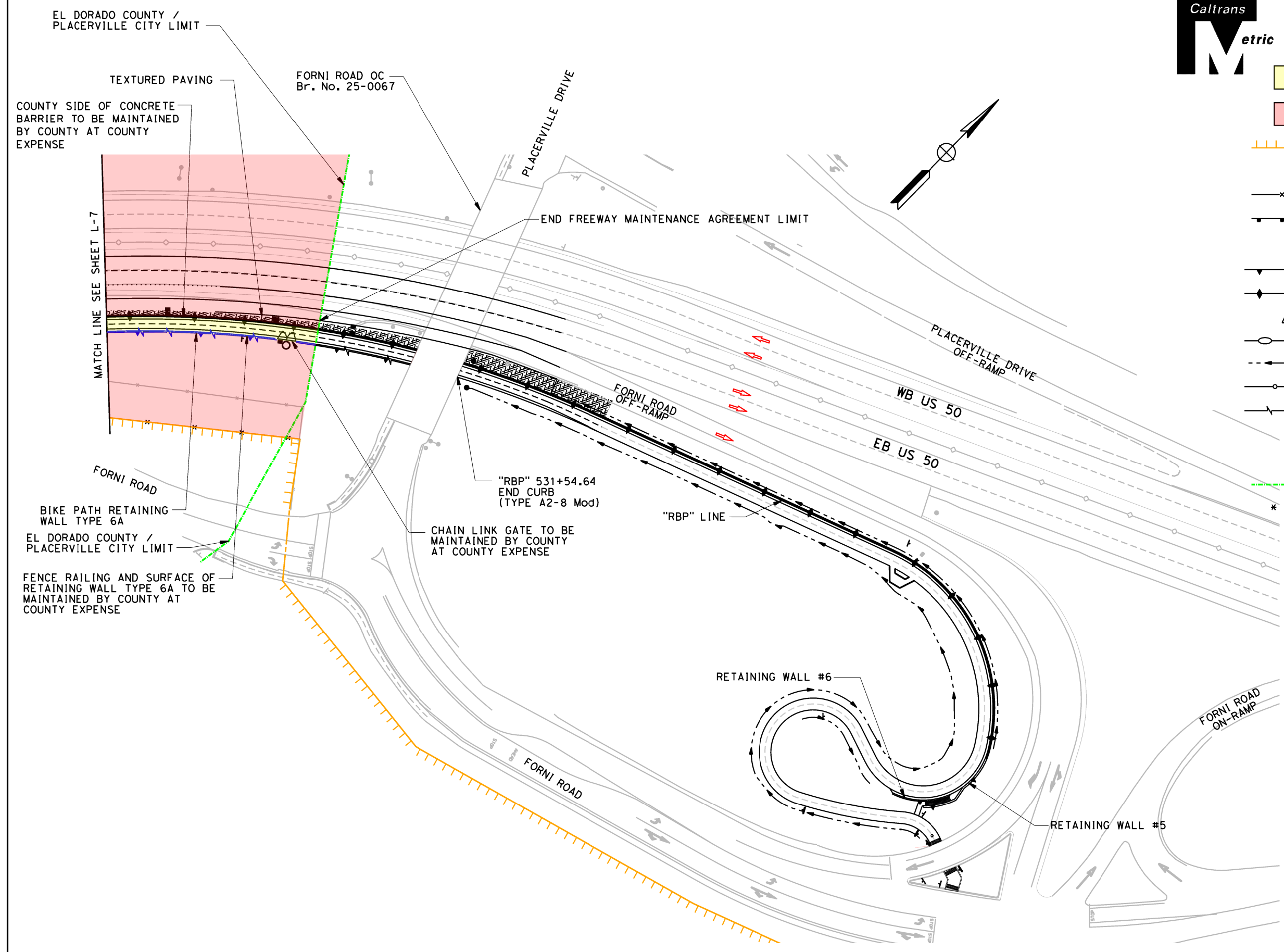
RELATIVE BORDER SCALE IS IN MILLIMETERS



DIST	COUNTY	LOCATION CODE	KM (MILES) TOTAL PROJECT	POST TOTAL PROJECT	SHEET No.	TOTAL SHEETS
03	ED	50	23.9/25.4 (14.8/15.8)		8	9



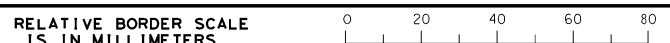
- LEGEND:**
- TO BE MAINTAINED BY COUNTY AT COUNTY EXPENSE
 - STATE MAINTAINS AT STATE EXPENSE
 - CALTRANS R/W ACCESS CONTROL
 - DIRECTION OF TRAFFIC
 - CHAIN LINK FENCE *
 - METAL BEAM GUARD RAILING *
 - OVERHEAD SIGN
 - RETAINING WALL *
 - CONCRETE BARRIER *
 - CHAIN LINK GATE *
 - TUBULAR BICYCLE RAILING*
 - ROCK LINED DITCH *
 - CABLE RAILING *
 - FENCE RAILING *
 - ROADSIDE SIGN (ONE OR TWO POST) *
 - DRAINAGE INLET *
 - PLACERVILLE CITY LIMIT
- * LINES SHOWN AS BLUE SHALL BE MAINTAINED BY COUNTY AT COUNTY EXPENSE.



ALL DIMENSIONS ARE IN METERS UNLESS OTHERWISE SHOWN

EXHIBIT A

SCALE 1:500



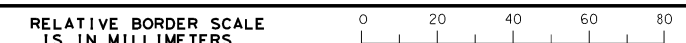
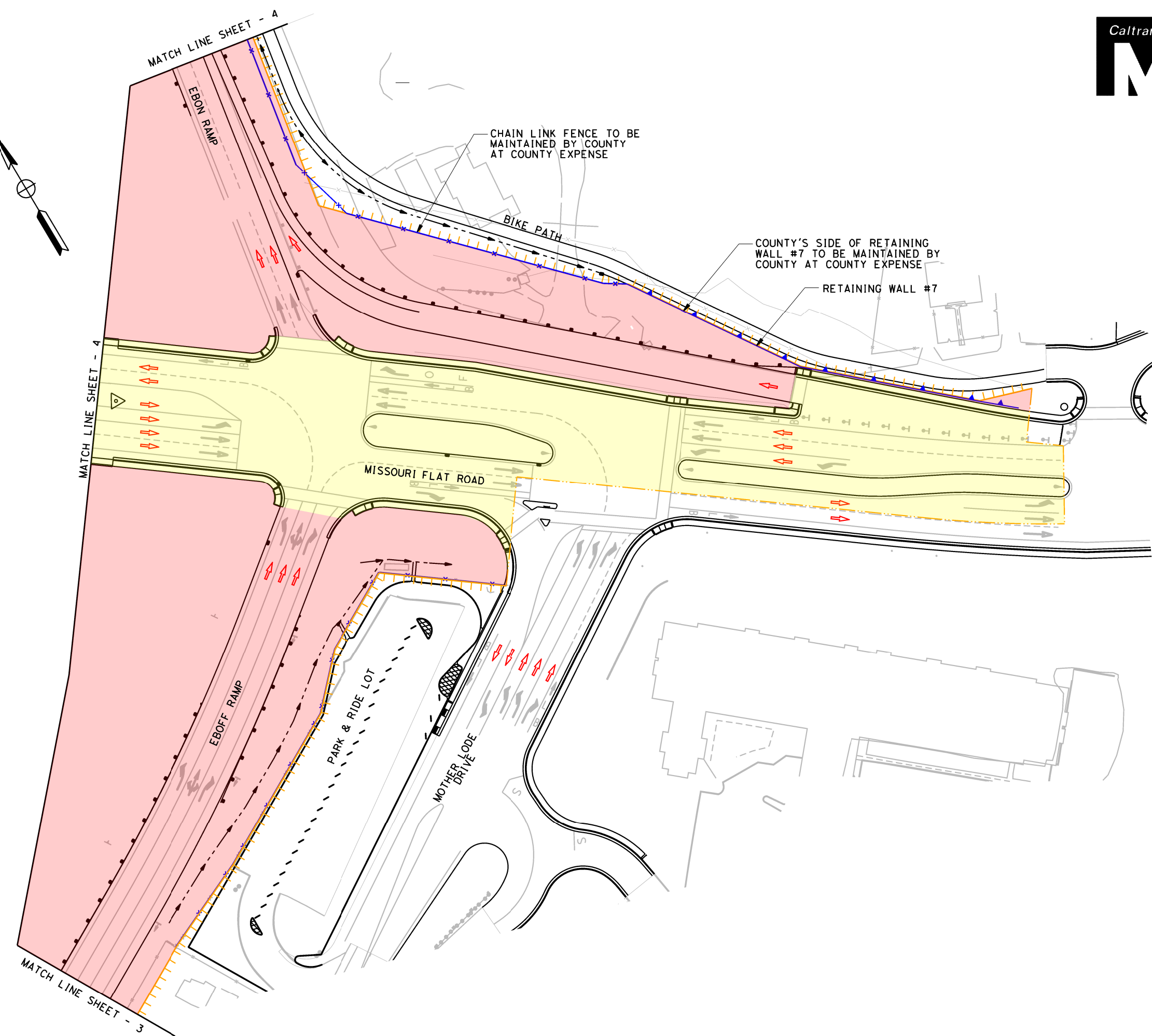
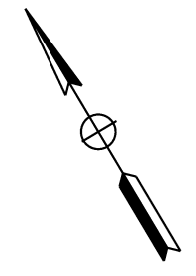
DIST	COUNTY	LOCATION CODE	KM (MILES)	POST TOTAL PROJECT	SHEET No.	TOTAL SHEETS
03	ED	50	23.9/25.4 (14.8/15.8)		9	9



LEGEND:

- TO BE MAINTAINED BY COUNTY AT COUNTY EXPENSE
- STATE MAINTAINS AT STATE EXPENSE
- CALTRANS R/W ACCESS CONTROL
- DIRECTION OF TRAFFIC
- CHAIN LINK FENCE *
- METAL BEAM GUARD RAILING *
- OVERHEAD SIGN
- RETAINING WALL *
- CONCRETE BARRIER *
- CHAIN LINK GATE *
- TUBULAR BICYCLE RAILING *
- ROCK LINED DITCH *
- CABLE RAILING *
- FENCE RAILING *
- ROADSIDE SIGN (ONE OR TWO POST) *
- DRAINAGE INLET *

* LINES SHOWN AS BLUE SHALL BE MAINTAINED BY COUNTY AT COUNTY EXPENSE.



FILE => S:\Client\El Dorado\E01-501-01-MOFLAT PS&E Phase I\ROW Displays for Caltrans\LS.dgn

ALL DIMENSIONS ARE IN METERS UNLESS OTHERWISE SHOWN

EXHIBIT A

SCALE 1:500

DATE PLOTTED => 3/14/2016
TIME PLOTTED => 9:05:44 AM