

**El Dorado County Development Services/Building Services  
Permit Center**

**Plan Review Goals**

OTC (Over the Counter):

- Residential permits:
  - Mechanical
  - Plumbing
  - Electrical
  - Reroofs
  - Remodels (as assessed by Plan reviewer)
  - Repairs (as assessed by Plan reviewer)
  - Fire Repairs (as assessed by Plan reviewer) \*
- Non-residential
  - Reroofs: same for same (or as assessed by Plan reviewer)
- Revisions-residential (15-20 minutes)

Urgent (1-3 working days):\*\*

- Photovoltaic
  - Roof mount and ground mount
- Non-residential:
  - Mechanical
  - Plumbing
  - Electrical
  - Signs (@ established centers)\*\*\*
    - Building
      - Monument
      - Pole
  - T.I.'s: no intensification of use
- Conversions-residential
  - Covered patios
- Inspection exempt barns
- Remodels (not done OTC)
- Repairs (not done OTC)
- Revisions (not done OTC)
- Decks-small

Express (10 working days):

- Residential
  - Garages
  - Accessory buildings
  - Swimming pools
  - Decks-large
  - Grading
- Non-residential
  - T.I.'s (as assessed by Plan reviewer)
- 3<sup>rd</sup> party verifications (residential)\*\*\*\*

Submitted by Jimmi  
Donales  
at Board Hearing of 5/20/08  
# 31 & #52

\*Fire repairs will be reviewed as soon as possible.

\*\*Days are goals for initial plan review only; does not include other department/agency reviews

\*\*\* Established centers will have the 'Sign Criteria' researched and available for reviewing staff in a separate binder, so that research on these requirements does not have to be done with each application.

\*\*\*\*Less complicated verifications may be able to be done in a quicker time frame.

**Building reviewers:**

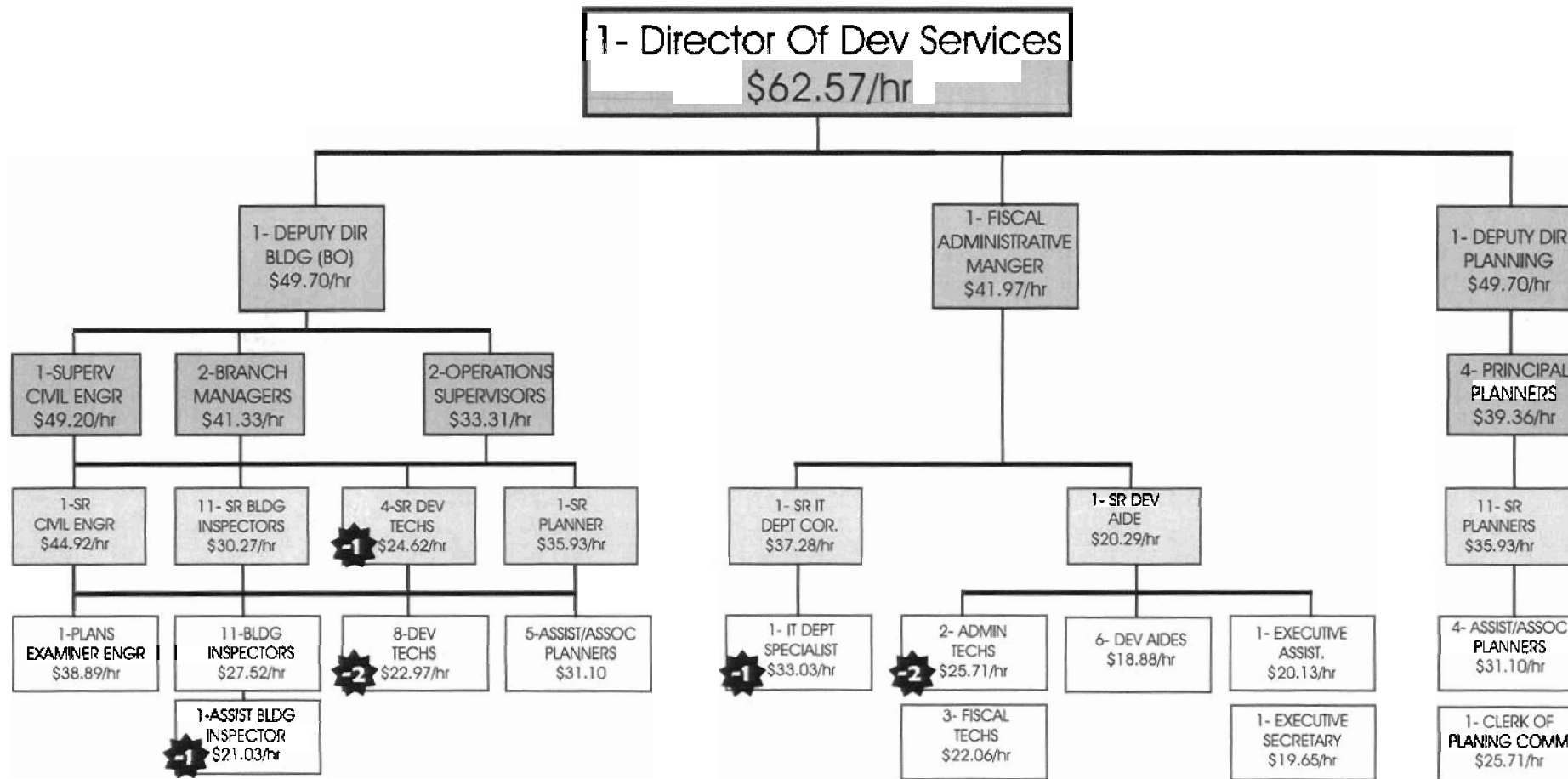
- Lynda Sund-Front Counter  
Deb Karen-Front Counter
- Tom Davis-Inspector: available for backup, Urgent and Express reviews
- Dan Cornell-Inspector: available for Urgent and Express reviews  
Steve Frizzle-Plan Review: available as backup as needed

**Planning reviewers:**

- Residential:
  - Tammi Gonsalves-Front Counter
  - Priscilla Maxwell-Front Counter
  - Tom Purciel-Front Counter backup
- Non-residential:
  - Tammi Gonsalves-"Triage"
  - Ellen VanDyke
  - Kristen Davis
  - Mark Millard-backup

**Plan reviewer assessments:**

- How to be processed (time frame)
- Plan requirements



**Current Positions**

- 13 Managers
- 30 Lead Workers
- 45 Line/Support staff

**Proposed Positions**

- 13 Managers
- 29 Lead Workers
- 39 Line/Support staff

This looks top heavy, why all the Managers for so many Lead Workers? Lead Workers do a lot of the management duties as far as overseeing employees. There is more than a 1 to 1 ratio of Management/Lead Workers over Line/Support Staff. The proposed layoffs do not address this situation.