

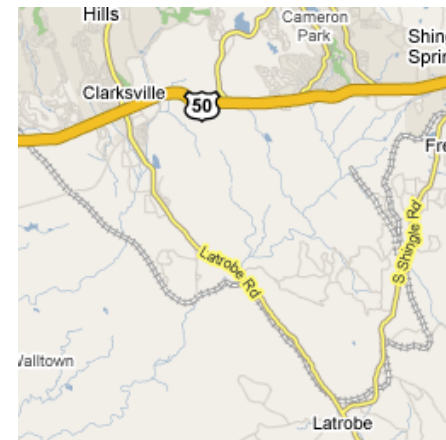
# SUN RIDGE MEADOW SUBDIVISION

---

**GENERAL VACATION  
A PORTION OF DODSON ROAD  
AND A PORTION OF HEFFREN DRIVE**

# SUN RIDGE MEADOW SUBDIVISION

- Sun Ridge Meadow Subdivision is located in the Latrobe/El Dorado Hills vicinity



# SUN RIDGE MEADOW SUBDIVISION



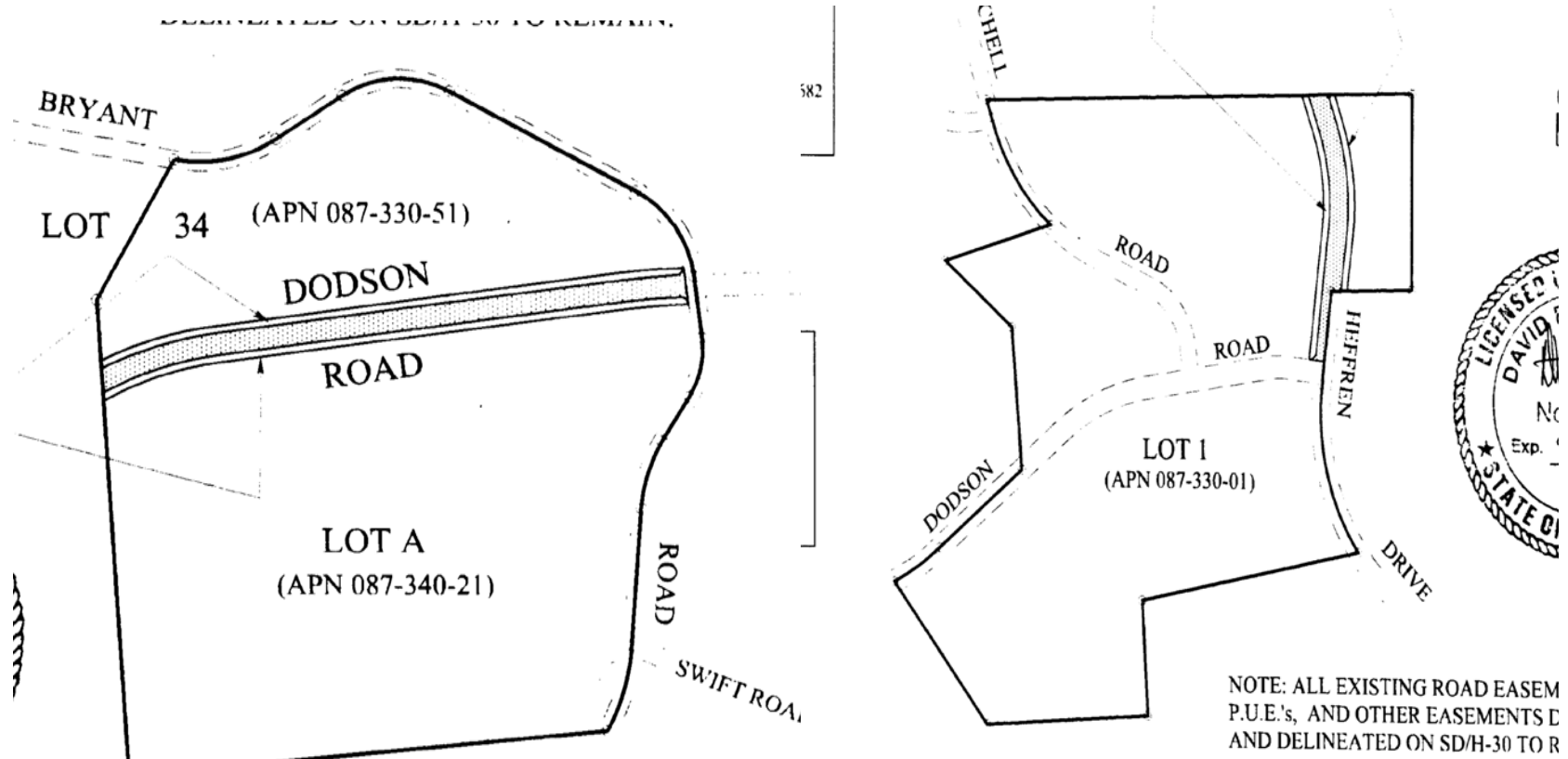
Dodson Road



Heffren Drive

- the Board of Supervisors has been petitioned by the Sun Ridge Meadow Owners Association to abandon a portion of Dodson Road and Heffren Drive, which are unconstructed roads within the Sun Ridge Meadow Subdivision

# SUN RIDGE MEADOW SUBDIVISION



**THESE ARE THE PORTIONS OF ROADWAYS TO BE ABANDONED**

PORTION OF "HEFFREN DRIVE" (60' ROAD EASEMENT)

# SUN RIDGE MEADOW SUBDIVISION

---

- ❑ the roadways are not necessary for present or prospective public use
- ❑ the abandonment is in conformity with the General Plan
- ❑ A T & T, Comcast, El Dorado Irrigation District, and PG&E, have no objection to the abandonment and the utility companies do not request that a public utility easement be reserved for any future use

# SUN RIDGE MEADOW SUBDIVISION



## □ PUBLIC COMMENT & DISCUSSION



5/19/09

09-0354.F.6



# SUN RIDGE MEADOW SUBDIVISION



5/19/09

**END OF PUBLIC HEARING**

09-0354.F.7