

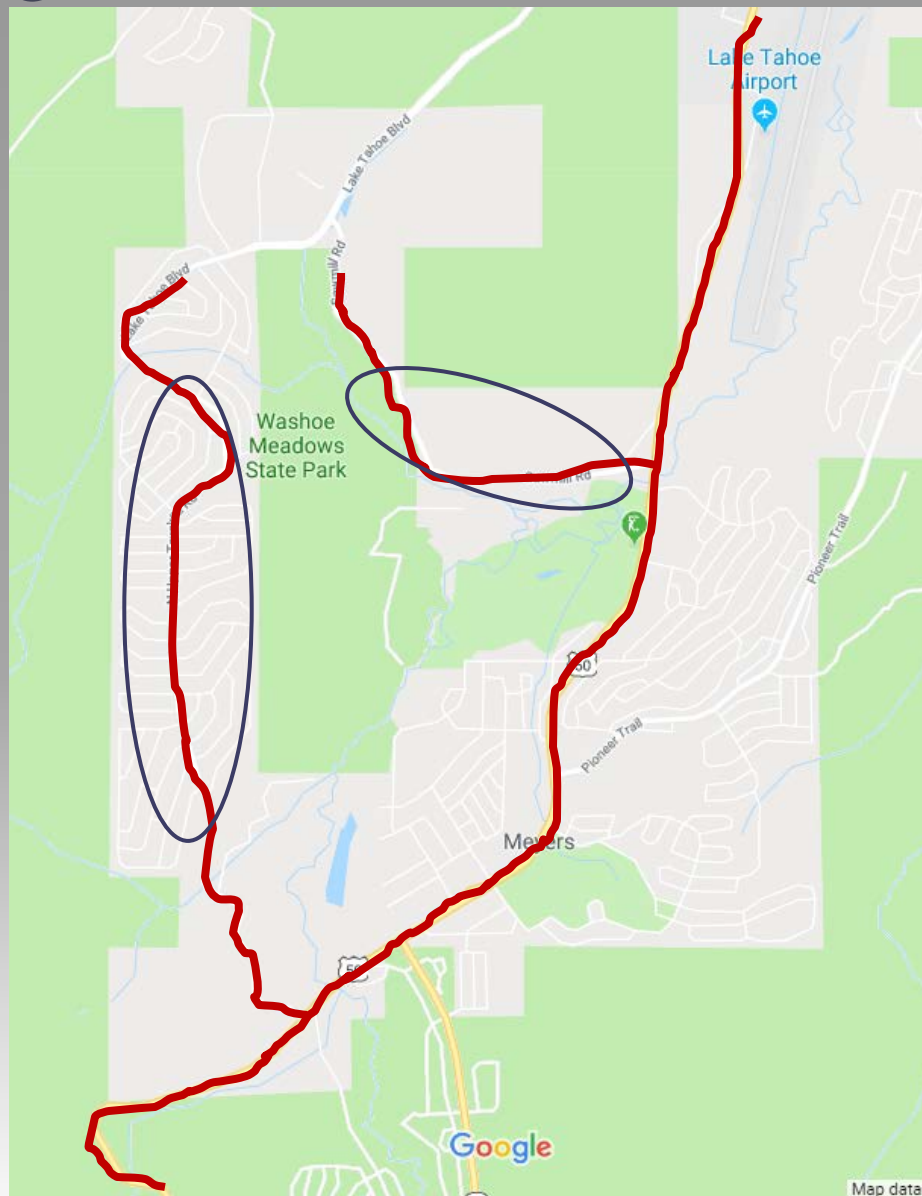
El Dorado County

Department of Transportation



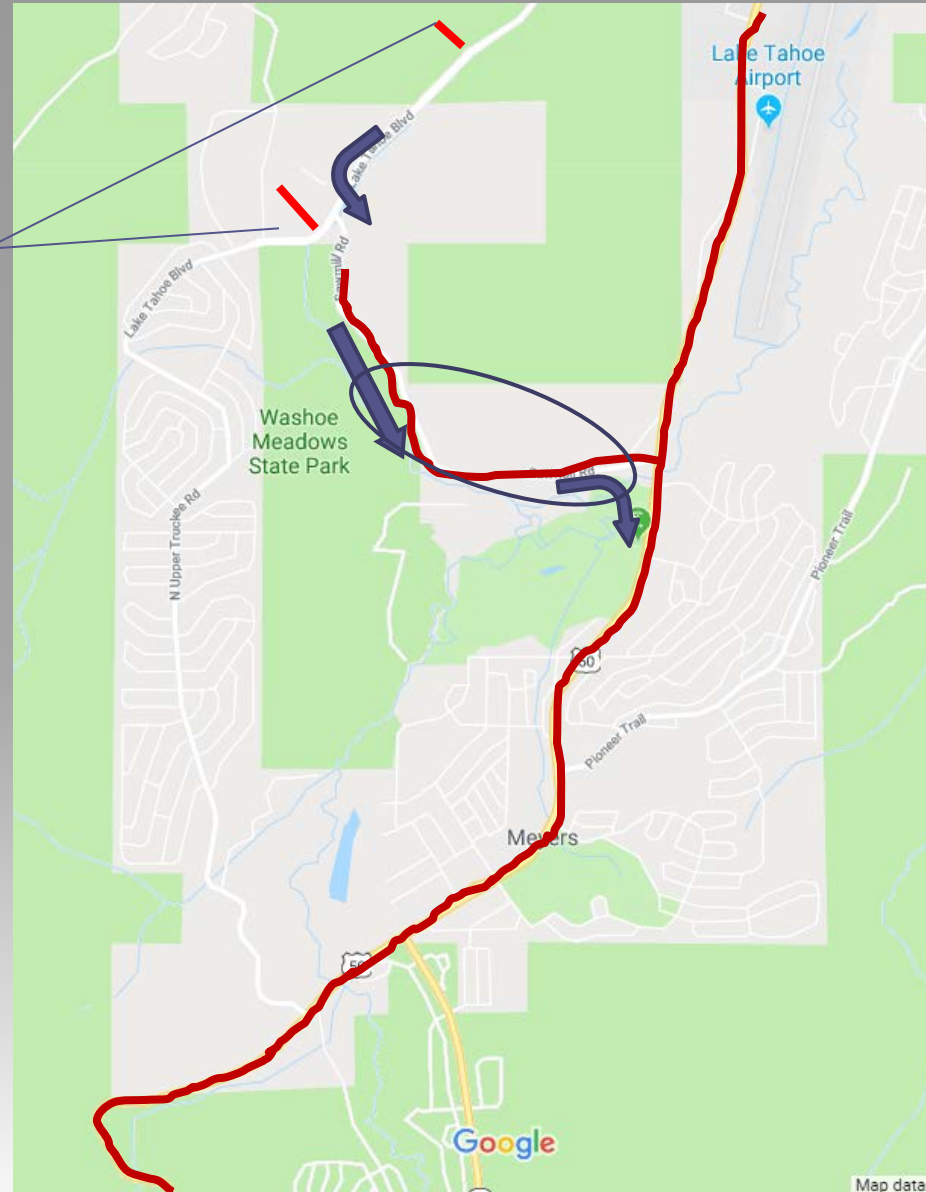
Meyers Circulation Pilot Project

Meyers Congestion Problem Areas

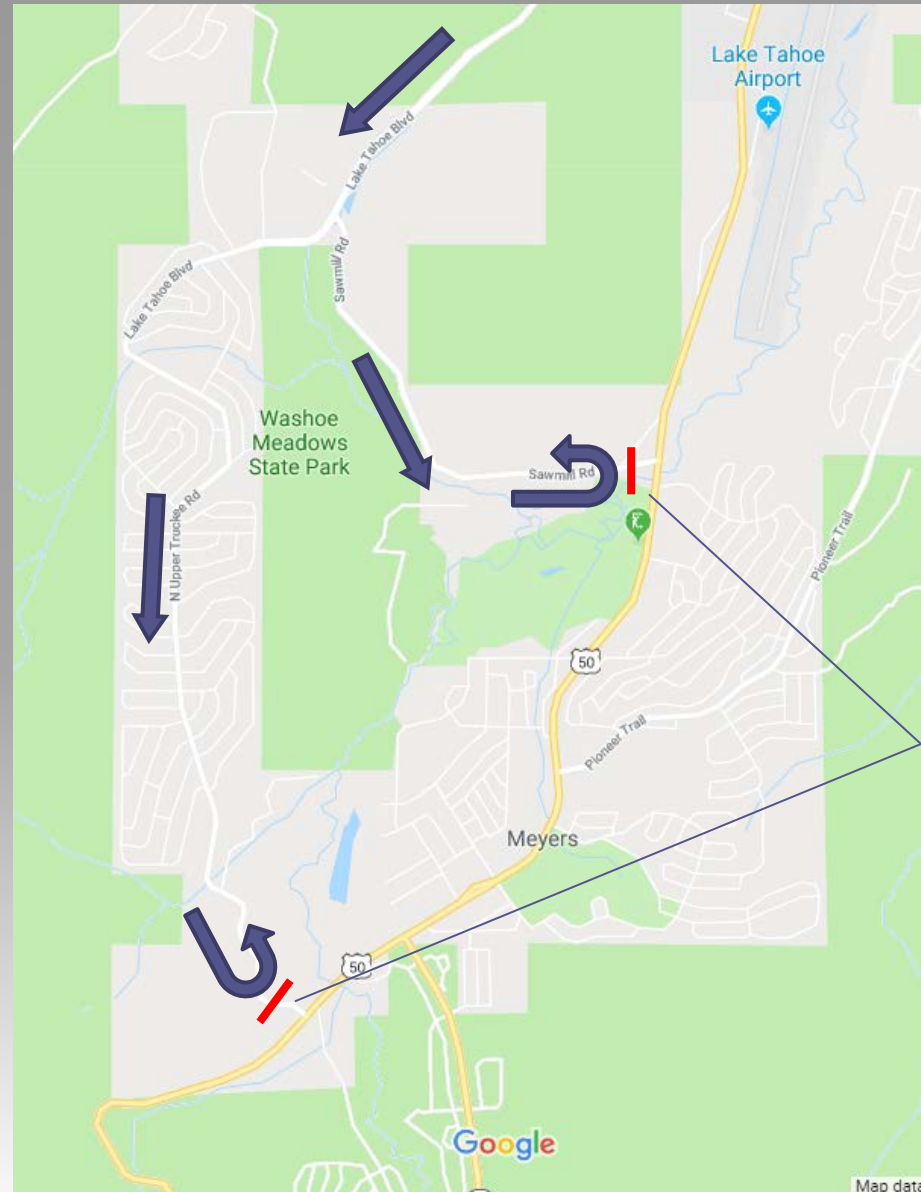


Nudge Road Detour Pilot

Partial Closure
detour to US-50



Full Road Closure Pilot



**Full Closure
access to
US-50**

Impacts to Transportation

- **Implement Closure Signs**
 - **Sunday Morning Installation = \$550**
 - **Monday Morning Pick Up = \$250**
 - **2 – Implementations:**
(July 4th and Labor Day Weekends)
 - **Total Impact to DOT = \$1600**
 - **DOT to report back to Board in Sept. on Pilot results**