

A RURAL SUBDIVISION

Rancho Cumbre

PORTION N. 1/2 SECTION 31
T. 13N., R. 10E., M. 10M.
COUNTY OF EL DORADO, STATE OF CALIFORNIA

PREPARED BY: [Name]
DATE: [Date]

SCALE: 1" = 100'

Sheet 1 of 2

NOTES

1. ROAD NOT EASEMENT WITH PIPE

2. ROAD NOT EASEMENT WITH PIPE

3. ROAD NOT EASEMENT WITH PIPE

4. ROAD NOT EASEMENT WITH PIPE

5. ROAD NOT EASEMENT WITH PIPE

6. ROAD NOT EASEMENT WITH PIPE

7. ROAD NOT EASEMENT WITH PIPE

8. ROAD NOT EASEMENT WITH PIPE

9. ROAD NOT EASEMENT WITH PIPE

10. ROAD NOT EASEMENT WITH PIPE

11. ROAD NOT EASEMENT WITH PIPE

12. ROAD NOT EASEMENT WITH PIPE

13. ROAD NOT EASEMENT WITH PIPE

14. ROAD NOT EASEMENT WITH PIPE

15. ROAD NOT EASEMENT WITH PIPE

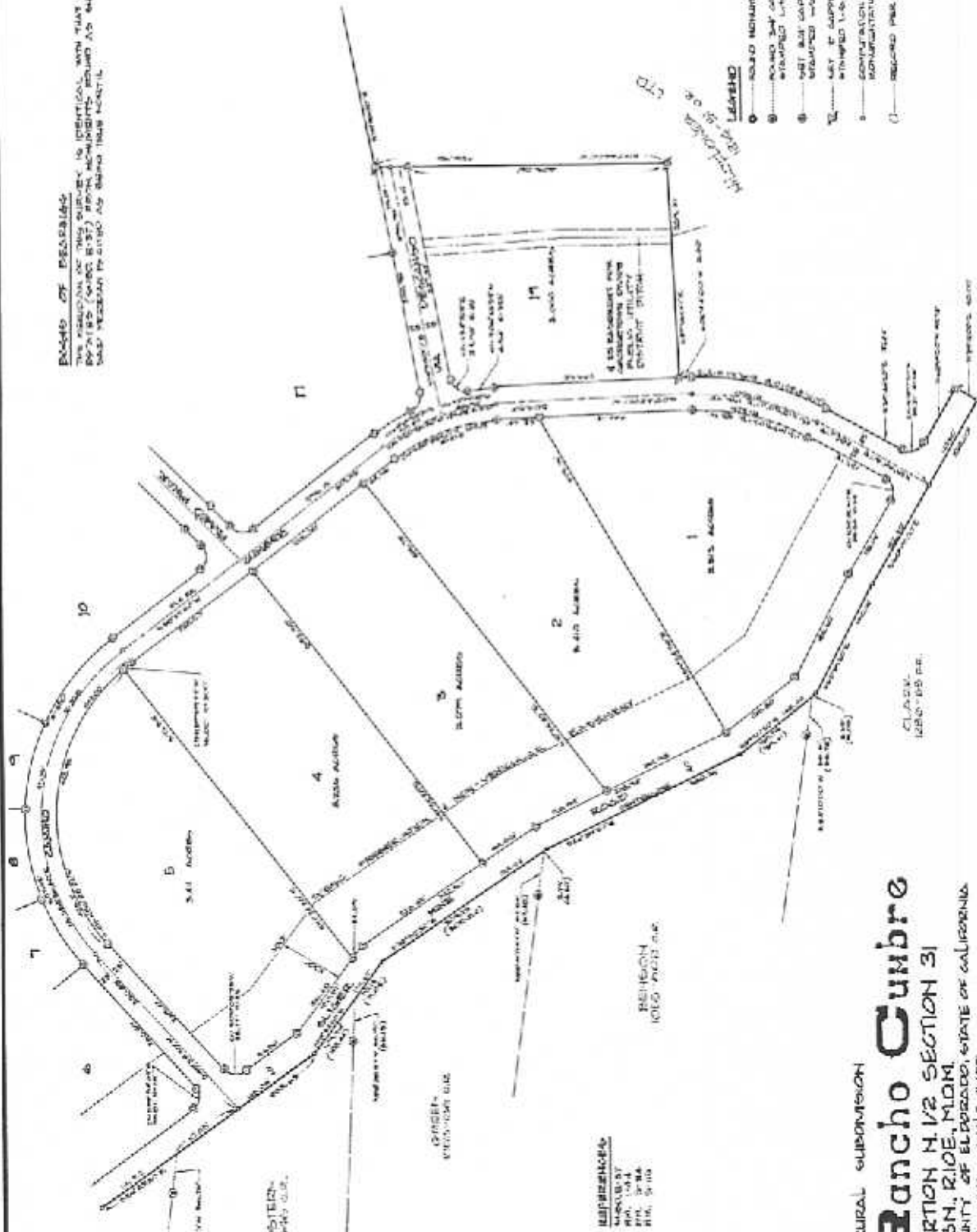
16. ROAD NOT EASEMENT WITH PIPE

17. ROAD NOT EASEMENT WITH PIPE

18. ROAD NOT EASEMENT WITH PIPE

19. ROAD NOT EASEMENT WITH PIPE

POINTS OF DISCREPANCY
 THE ORIGINAL OF THIS SURVEY IS IDENTICAL WITH THAT OF ADJACENT LANDS.
 POINTS (MARKED BY 'X') SHOW DISCREPANCIES BEING AS SHOWN HEREON.
 THIS DISCREPANCY BEING AS SHOWN THIS MAP.



- LEGEND**
- MONUMENT LOCATION AS SHOWN
 - CORNER NOT CAPTURED WITH THIS SURVEY. L.S. NOT
 - ⊙ NOT ALL CAPTURED CORNER PILES RECORDED WITH THIS SURVEY
 - ⊙ NOT ALL CAPTURED CORNER PILES CAPTURED WITH THIS SURVEY
 - ⊙ COMPUTATION POINT - NO MONUMENTATION
 - RECORDED PILE CORNER

A RURAL SUBDIVISION
Rancho Cumbre
 PORTION N 1/2 SECTION 31
 T15N, R10E, M10W,
 COUNTY OF EL DORADO, STATE OF CALIFORNIA
 MAP DATE SCALE 1"=100'
 SURVEY & RECONSTRUCTION - LAND SURVEYORS

REFERENCES
 MONUMENT
 P.M. 104
 P.M. 374
 P.M. 511

