

UPDATES: King Fire Restoration Fire Adapted 50 Cohesive Strategy



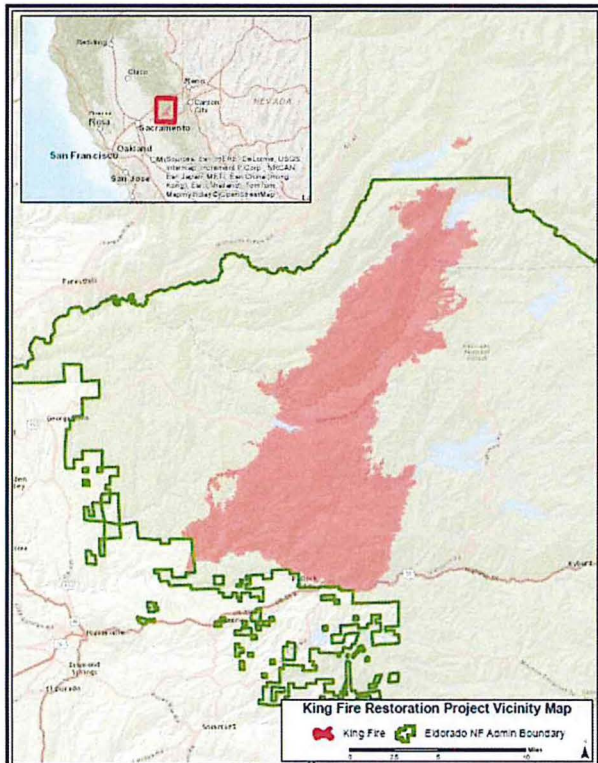
El Dorado County &
Georgetown Divide Resource
Conservation Districts



King Fire Restoration

Environmental analysis led to selection of Modified Alternative 2:

- Approximately 17,000 acres total:
 - salvage and fuel treatment - 15,739 acres
 - roadside hazard tree removal - 198 miles
 - erosion control and rehabilitation on watershed sensitive areas - 227 acres
 - reforestation - 10,609 acres



Treats 26% of the National Forest lands that burned in the King Fire



King Fire Restoration

➤ Salvage Timber Sales in Progress:

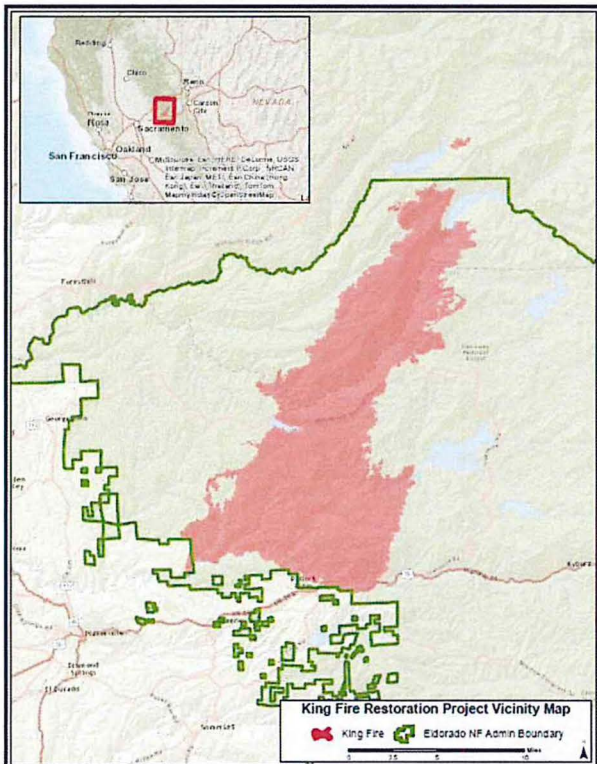
- Little Bear - 62 acres – (1/3 complete)
- Unreal – 72 acres
- Caesar – 1,374 acres
- 2 Chaix (modified pre-fire sale) – 1,249 acres

➤ Salvage Timber Sales TBA:

- Pompeii – 900 acres
- Pliny – 2,300 acres
- Quidazoic- 1,500 acres

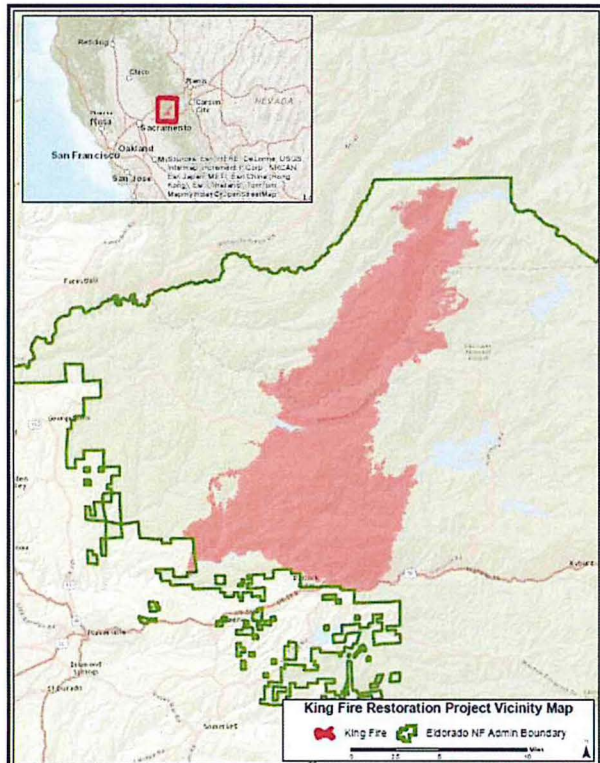
➤ Non-Commercial Treatments TBA:

- Mechanical biomass removal, prescribed fire





King Fire Restoration



➤ Reforestation:

- 541,000 seedlings ordered from Placerville Nursery to replant 4,000 acres in fall 2016 / spring 2017

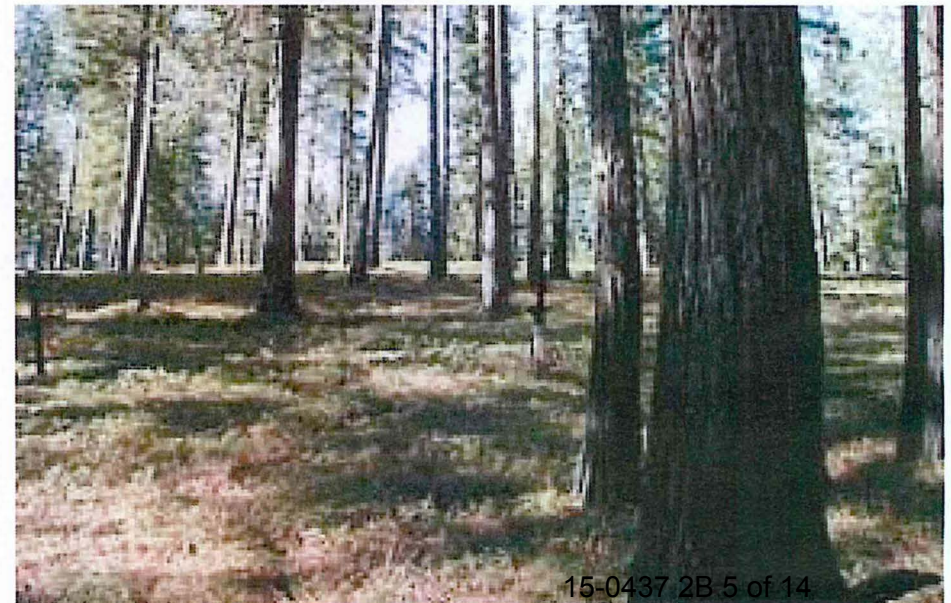
➤ Completed:

- 189 acres harvested around campgrounds
- 324 acres replanting of burned plantations
- 130 acres of mastication for erosion control
- BAER: 1265 acres of helimulching, road drainage improvements



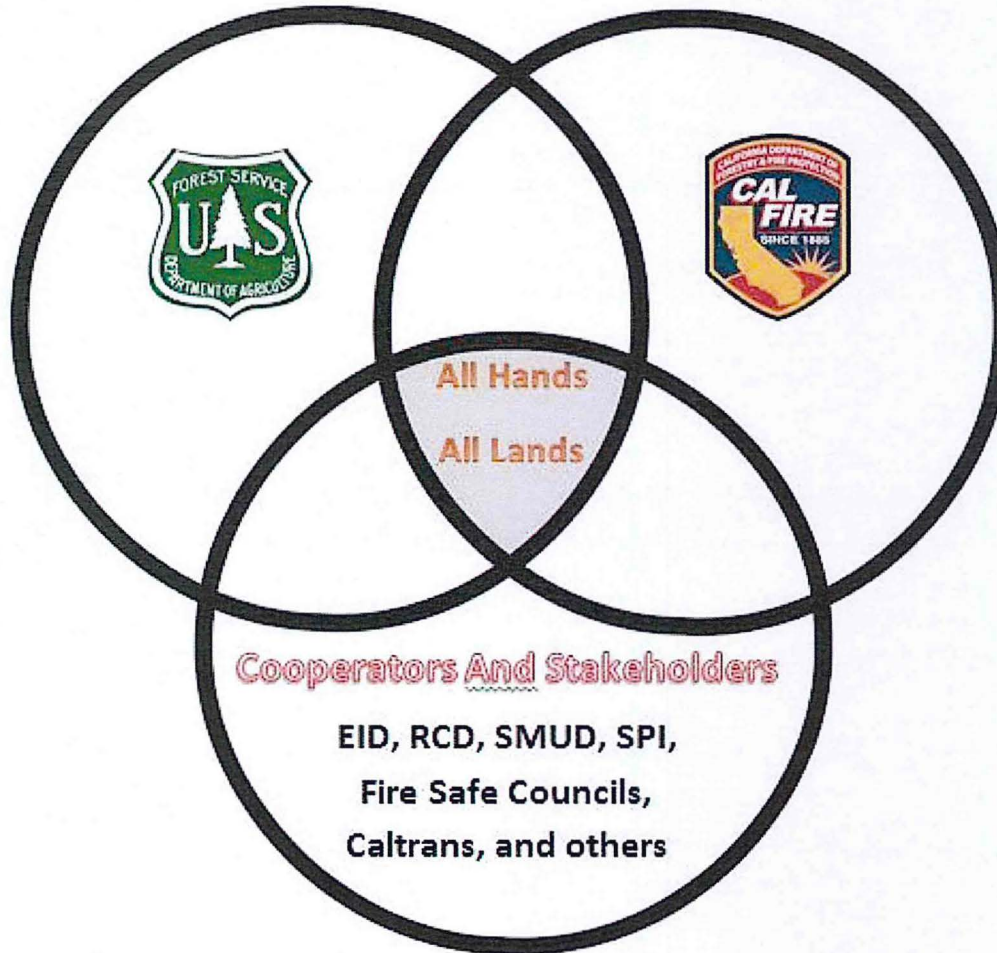
Fire Adapted 50

- **“All-Lands-All Hands” approach to create fire adapted communities along the Highway 50 corridor**
- **Connect the dots approach to create larger, more fire resistant fuel breaks**





Fire Adapted 50





Fire Adapted 50

Fire Adapted 50 is currently divided into 3 major phases:

Sly Park Phase -

Work in this area has been going on for 27 years.

We will expand the established shaded fuel break to connect to Highway 50 and Forest Service land along Sly Park Road.

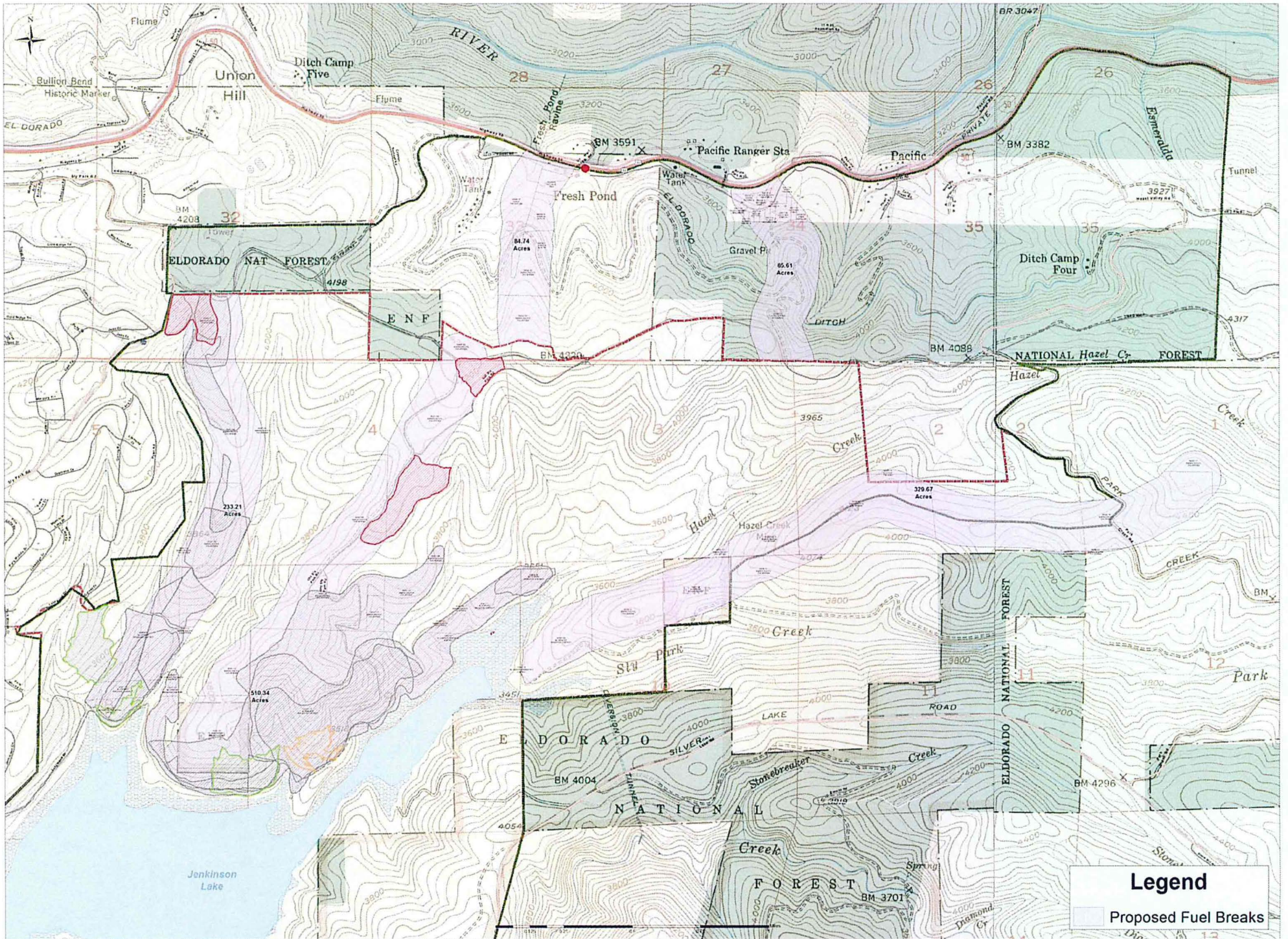
Camino / Pollock Pines Fuel Break Phase -

Work in this area will be from Slab Creek Dam to Pony Express Trail along the rim of the canyon.

This will improve and reinforce existing fuel breaks developed during the King Fire, and will tie into the existing Independence Fuel Break.

Highway 50 Roadside Fuel Reduction Corridor -

Work in this area will be roadside reduction for 300 feet on the north (uphill) side of Highway 50 from Pollock Pines to Strawberry



Legend
 Proposed Fuel Breaks



Fire Adapted 50

Challenges-

- Competing Resources
- Bark Beetle infestation due to prolonged drought
- Increased fire risk due to drought





Fire Adapted 50

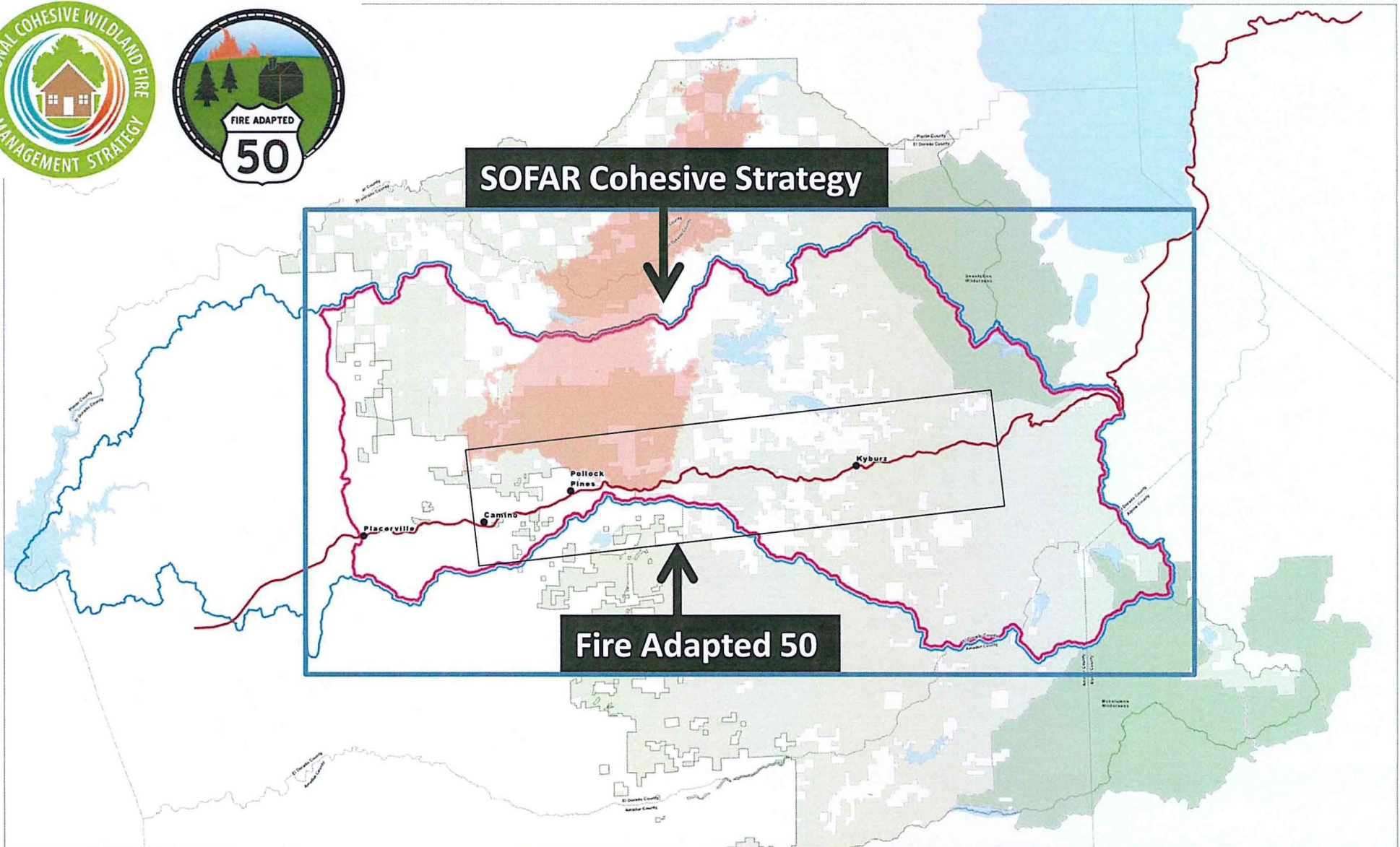
Current Status

- Finalizing contract with El Dorado County Resource Conservation District for Sly Park Phase
- Collaboratively planning future phases



BEFORE

AFTER



Cohesive Strategy Project Area

South Fork American River Watershed



SOFAR Cohesive Strategy

- The National Cohesive Wildland Fire Management Strategy was initiated in 2009 as directed by Congress in the FLAME ACT
- Collaboration among all stakeholders, across all landscapes, using best available science to achieve 3 goals:
 1. Resilient landscapes
 2. Fire Adapted Communities (**includes Fire Adapted 50*)
 3. Safe / Effective Response
- S. Fork of the American River Project Area – 1 of 2 sites in California:
 - approximately 410,000 acres
 - upper 75% of the South Fork of the American River Watershed
 - 50% of the King Fire burned area
 - 49 miles of the Highway 50 corridor



SOFAR Cohesive Strategy

Current Projects in Progress:

1. Resilient landscapes – *King Fire Restoration, Cleveland-Icehouse Plantation Thinning, Pilliken Plantation Thinning, Caples Prescribed Fire / Ecological Restoration*
2. Fire Adapted Communities – *Fire Adapted 50, Roadrunner*
3. Safe / Effective Response – *Fire Detection Camera System, Big Hill Roadside Brushing, Road Reconstruction*

Collaborative Formation:

- A Team of Representatives from 7 stakeholder organizations reviewed proposals and make recommendations for hiring a facilitator
- Facilitator from CBI (Consensus Building Institute) will establish a process for engaging stakeholders regarding their interests in the watershed
- Up to 30 organizations are expected to be involved



SOFAR Cohesive Strategy

Technical Evaluation Team Representatives:

- El Dorado County Board of Supervisors
- El Dorado County Fire Safe Council
- El Dorado County Resource Conservation District
- CAL Fire
- Sierra Pacific Industries
- Sierra Forest Legacy
- USFS Pacific Southwest Research Station

Related Collaboration in the SOFAR Watershed:

- El Dorado County Community Wildfire Protection Plan (CWPP)

Next Steps:

- CBI will conduct stakeholder interviews and develop an assessment of interests and values to be protected in the watershed