



# Coloma Lotus Advisory Committee Overview 2024

# Coloma Lotus Advisory Committee (CLAC)

- Established 2019
- Area of Responsibility: The Committee's geographic area of responsibility shall be limited to the Coloma Lotus Valley, including the area of influence along South Fork of the American River from Chili Bar Dam to Folsom Lake
- Committee Purpose: The Committee shall review and make recommendation to the Parks and Recreation Commission, Planning Commission and the Board of Supervisors
- Membership: The Committee shall be comprised of seven members.
  - Business Representative, Outfitter Rep, Non-Commercial Boater Rep, Landowner/Resident Rep (2), Members-at-Large (2)

# On-Going Collaborative Projects with the County

- Annual River Report and River Related Issues – Parks and Rec.
- Mount Murphy Bridge – DOT
- EDC Fire District – re-opening of station 74
- Planning Applications and Permits – review applications, permits, and prospective proposals from the planning department
- Henningsen Lotus Park and Chili Bar – Parks and Rec.
- Lotus Road and Gold Hill Intersection - DOT



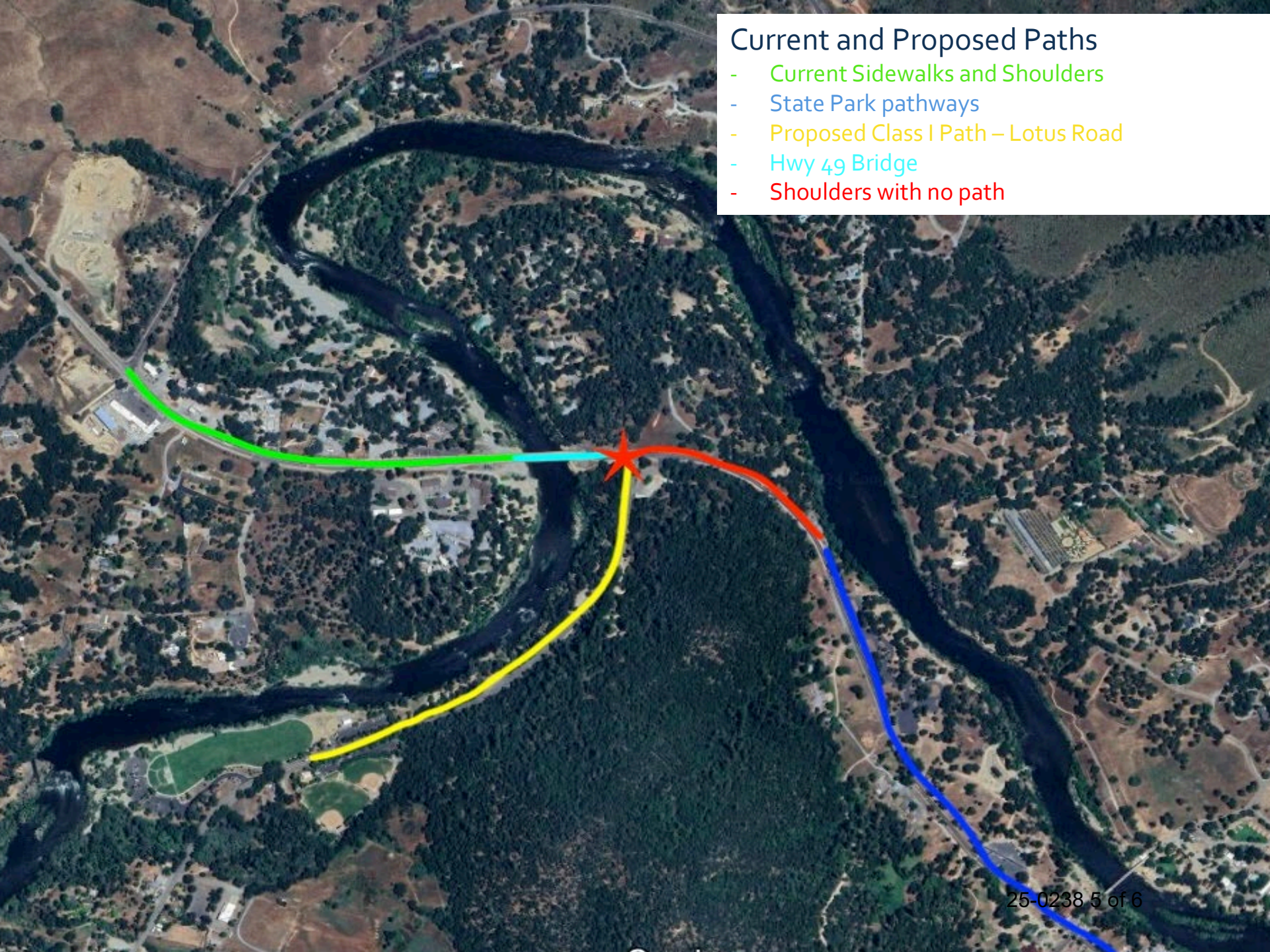
# CLAC Current Projects

- **Mnt Murphy Bridge Replacement**
- **County DOT Multi-use Class I path from Hwy 49 to HLP**
- **Multi-model (bike & pedestrian) integration with Cal Trans, County DOT, and State Park**
- **Chili Bar Planning (ongoing planning review) – bathrooms?**
- **River Management Plan Update**
  - River management fund, staffing levels, annual report review, and safety protocols.
- **Parks and Trails**
  - HLP (facilities, signage, boat access)
  - HLP Expansion Property
  - HWY 49 Bridge MOU



## Current and Proposed Paths

- Current Sidewalks and Shoulders
- State Park pathways
- Proposed Class I Path – Lotus Road
- Hwy 49 Bridge
- Shoulders with no path





# Questions?