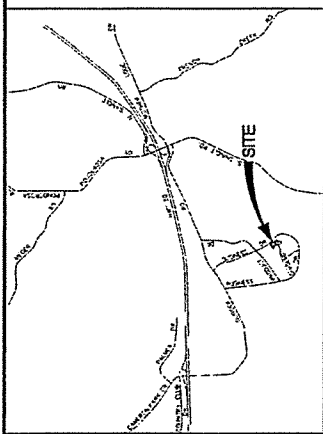


DATE	26. JUN. 2008
PROJECT	TENTATIVE MAP AND TREE PRESERVATION PLAN FOR 0.78 ACRES OF BARNETT LOT 18-DW
OWNER	PATTERSON DEVELOPMENT
OWNER ADDRESS	4250 BLACK HAWK DR. PLACERVILLE, CA 95667
OWNER PHONE	(530) 626-2716 FAX (530) 626-8522
OWNER FAX	
OWNER E-MAIL	
OWNER CONTACT	
OWNER TITLE	
OWNER SIGNATURE	
OWNER DATE	
OWNER ADDRESS	
OWNER PHONE	
OWNER FAX	
OWNER E-MAIL	
OWNER CONTACT	
OWNER TITLE	
OWNER SIGNATURE	
OWNER DATE	

OWNER
PATTERSON DEVELOPMENT
 4250 Black Hawk Dr.
 Placerville, CA 95667
 (530) 626-2716 Fax (530) 626-8522

BARNETT LOT 18-DW
 TENTATIVE MAP AND TREE PRESERVATION PLAN FOR 0.78 ACRES OF BARNETT LOT 18-DW
 SHANE SPRINGS CA
 PREPARED BY: PATTERSON DEVELOPMENT
 DATE: JUN 26, 2008



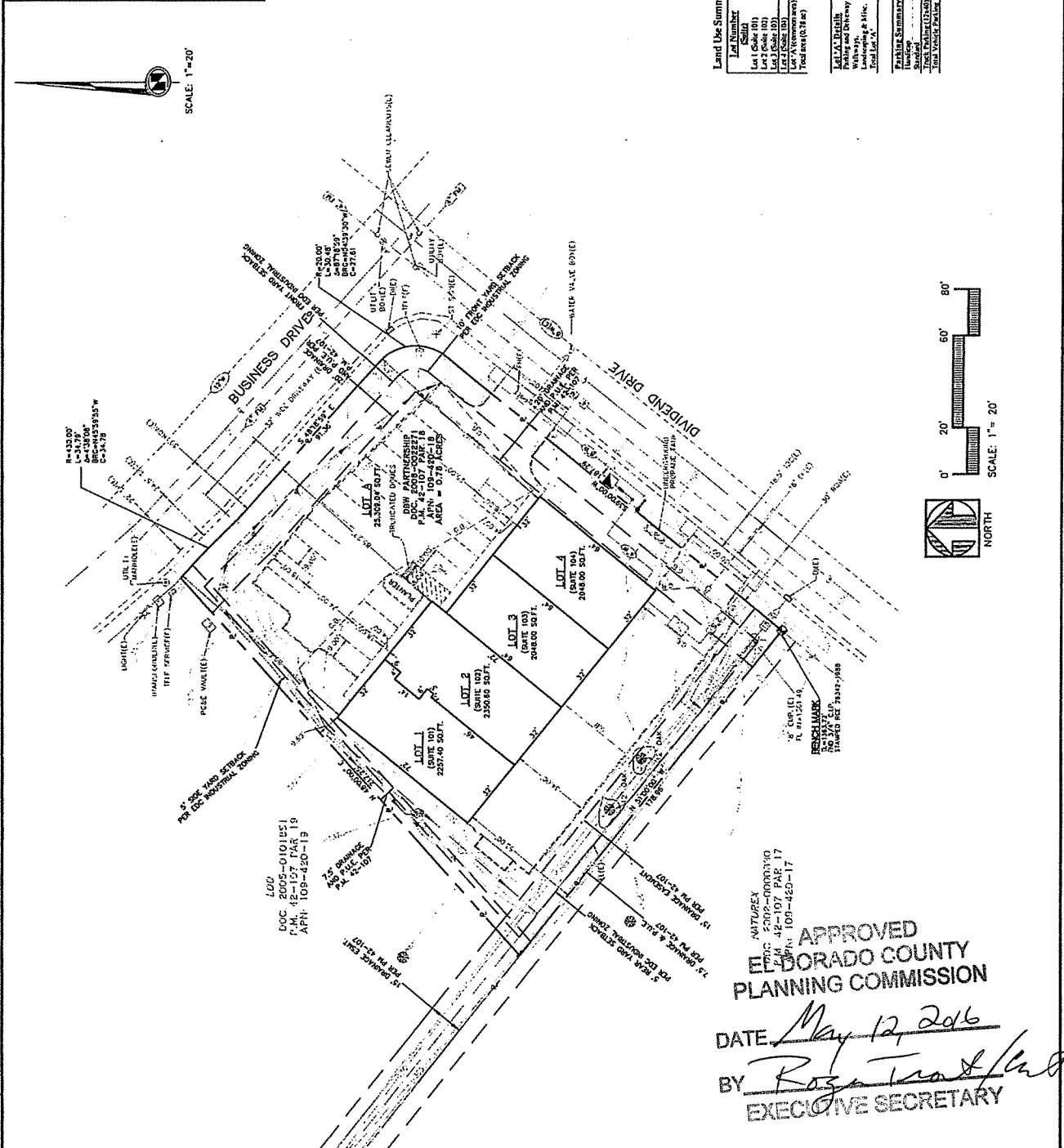
TREE PRESERVATION SUMMARY
 SITE AREA = 0.78 ACRES (34,013 SQ. FT.)
 (E) TREE CANOPY = 103 SQ. FT.
 (R) TREE CANOPY COVERAGE = 0.8%
 (T) TREE CANOPY TO BE RETAINED = 100%
 TREES 20' OR GREATER DBH ON SITE=0
 TREES 8' OR GREATER LIKELY TO BE REMOVED: 0

Proposed Tentative Map for APN 100-480-21

A. Owner of Record:	DBW Partnership 4250 Black Hawk Dr. Placerville, CA 95667 (530) 626-2716
B. Map Prepared by:	Field Survey 6410 Merchandise Way Diamond Springs, CA 95619-9430 Phone (530) 626-3746, Fax (530) 626-8772
C. Scale:	1" = 20' Feet
D. Contour Interval:	2 Feet
E. Source of Topography:	Field Survey
F. Section, Township and Range:	Pos. Of Sec. II, T9N, R06E, W12E, M.
G. Project Number:	100-480-21
H. Present Zoning:	RM-10
I. Total Area:	0.78 Acres
J. Total Number of Parcels:	4
K. Minimum Parcel Area:	0.057 ac. (2484.00 sq. ft.)
L. Maximum Parcel Area:	0.78 ac. (33909.00 sq. ft.)
M. Street Layout:	El Dorado Placerville Blvd.
N. Fire Protection District:	El Dorado County Fire Protection District
O. Date of Preparation:	June 26, 2008
P. Zoning Administrator:	El Dorado County
Board of Supervisors Approval/Repeal Date:	5/12/2006

Land Use Summary

Lot Number	Area
Lot 1 (Galar 101)	2377.40
Lot 2 (Galar 102)	2350.60
Lot 3 (Galar 103)	2347.40
Lot 4 (Galar 104)	2480.00
Lot 5 (Galar 105)	2347.40
Lot 6 (Galar 106)	2347.40
Lot 7 (Galar 107)	2347.40
Lot 8 (Galar 108)	2347.40
Lot 9 (Galar 109)	2347.40
Lot 10 (Galar 110)	2347.40
Lot 11 (Galar 111)	2347.40
Lot 12 (Galar 112)	2347.40
Lot 13 (Galar 113)	2347.40
Lot 14 (Galar 114)	2347.40
Lot 15 (Galar 115)	2347.40
Lot 16 (Galar 116)	2347.40
Lot 17 (Galar 117)	2347.40
Lot 18 (Galar 118)	2347.40
Lot 19 (Galar 119)	2347.40
Lot 20 (Galar 120)	2347.40
Lot 21 (Galar 121)	2347.40
Lot 22 (Galar 122)	2347.40
Lot 23 (Galar 123)	2347.40
Lot 24 (Galar 124)	2347.40
Lot 25 (Galar 125)	2347.40
Lot 26 (Galar 126)	2347.40
Lot 27 (Galar 127)	2347.40
Lot 28 (Galar 128)	2347.40
Lot 29 (Galar 129)	2347.40
Lot 30 (Galar 130)	2347.40
Lot 31 (Galar 131)	2347.40
Lot 32 (Galar 132)	2347.40
Lot 33 (Galar 133)	2347.40
Lot 34 (Galar 134)	2347.40
Lot 35 (Galar 135)	2347.40
Lot 36 (Galar 136)	2347.40
Lot 37 (Galar 137)	2347.40
Lot 38 (Galar 138)	2347.40
Lot 39 (Galar 139)	2347.40
Lot 40 (Galar 140)	2347.40
Lot 41 (Galar 141)	2347.40
Lot 42 (Galar 142)	2347.40
Lot 43 (Galar 143)	2347.40
Lot 44 (Galar 144)	2347.40
Lot 45 (Galar 145)	2347.40
Lot 46 (Galar 146)	2347.40
Lot 47 (Galar 147)	2347.40
Lot 48 (Galar 148)	2347.40
Lot 49 (Galar 149)	2347.40
Lot 50 (Galar 150)	2347.40
Lot 51 (Galar 151)	2347.40
Lot 52 (Galar 152)	2347.40
Lot 53 (Galar 153)	2347.40
Lot 54 (Galar 154)	2347.40
Lot 55 (Galar 155)	2347.40
Lot 56 (Galar 156)	2347.40
Lot 57 (Galar 157)	2347.40
Lot 58 (Galar 158)	2347.40
Lot 59 (Galar 159)	2347.40
Lot 60 (Galar 160)	2347.40
Lot 61 (Galar 161)	2347.40
Lot 62 (Galar 162)	2347.40
Lot 63 (Galar 163)	2347.40
Lot 64 (Galar 164)	2347.40
Lot 65 (Galar 165)	2347.40
Lot 66 (Galar 166)	2347.40
Lot 67 (Galar 167)	2347.40
Lot 68 (Galar 168)	2347.40
Lot 69 (Galar 169)	2347.40
Lot 70 (Galar 170)	2347.40
Lot 71 (Galar 171)	2347.40
Lot 72 (Galar 172)	2347.40
Lot 73 (Galar 173)	2347.40
Lot 74 (Galar 174)	2347.40
Lot 75 (Galar 175)	2347.40
Lot 76 (Galar 176)	2347.40
Lot 77 (Galar 177)	2347.40
Lot 78 (Galar 178)	2347.40
Lot 79 (Galar 179)	2347.40
Lot 80 (Galar 180)	2347.40
Lot 81 (Galar 181)	2347.40
Lot 82 (Galar 182)	2347.40
Lot 83 (Galar 183)	2347.40
Lot 84 (Galar 184)	2347.40
Lot 85 (Galar 185)	2347.40
Lot 86 (Galar 186)	2347.40
Lot 87 (Galar 187)	2347.40
Lot 88 (Galar 188)	2347.40
Lot 89 (Galar 189)	2347.40
Lot 90 (Galar 190)	2347.40
Lot 91 (Galar 191)	2347.40
Lot 92 (Galar 192)	2347.40
Lot 93 (Galar 193)	2347.40
Lot 94 (Galar 194)	2347.40
Lot 95 (Galar 195)	2347.40
Lot 96 (Galar 196)	2347.40
Lot 97 (Galar 197)	2347.40
Lot 98 (Galar 198)	2347.40
Lot 99 (Galar 199)	2347.40
Lot 100 (Galar 200)	2347.40



Wirtanen Commercial Parcel Map Timeline and Expiration				
Item No.	Type of Action	Application	Dates (From/To)	Total Years
1	Discretionary	Original PM Approval Date	01/27/09	3
		Original Expiration..	01/27/12	
		<i>EDC code Sec. 120.74.020.</i>		
2	Automatic	Automatic Time Extension	01/27/12	2
		Revised Expiration	01/27/14	
		<i>Note : Two-year time extension under 66452.23 SMA (AB 208)</i>		
3	Automatic	Time Extension	01/27/14	2
		Revised Expiration	01/27/16	
		<i>Note: Two-year time extension under SMA 66452.24 (AB 116)</i>		
Current Request				
4	Discretionary/ Legislative	Time Extension	01/27/16	1
		Revised Expiration if Approved	01/27/17	
		<i>Note: Request for one year extension in accordance with SMA 66452.6 and EDC Code Section 120.74.030.</i>		

EXHIBIT G

APPROVED
 EL DORADO COUNTY
 PLANNING COMMISSION
 DATE May 12, 2016
 BY Roger Trout
 EXECUTIVE SECRETARY