

J-64a

FINAL MAP OF EUER RANCH UNIT NO. 8

A PORTION OF SECTIONS 14 & 15, T. 9 N., R. 8 E., M.D.M.
BEING LOTS 'A' & 'B' OF "EUER RANCH UNIT NO. 2", S.D. J-39
COUNTY OF EL DORADO, STATE OF CALIFORNIA
SCALE: 1"=50'
SHEET 2 OF 2 SEPTEMBER, 2005
COOPER, THORNE & ASSOCIATES, INC.

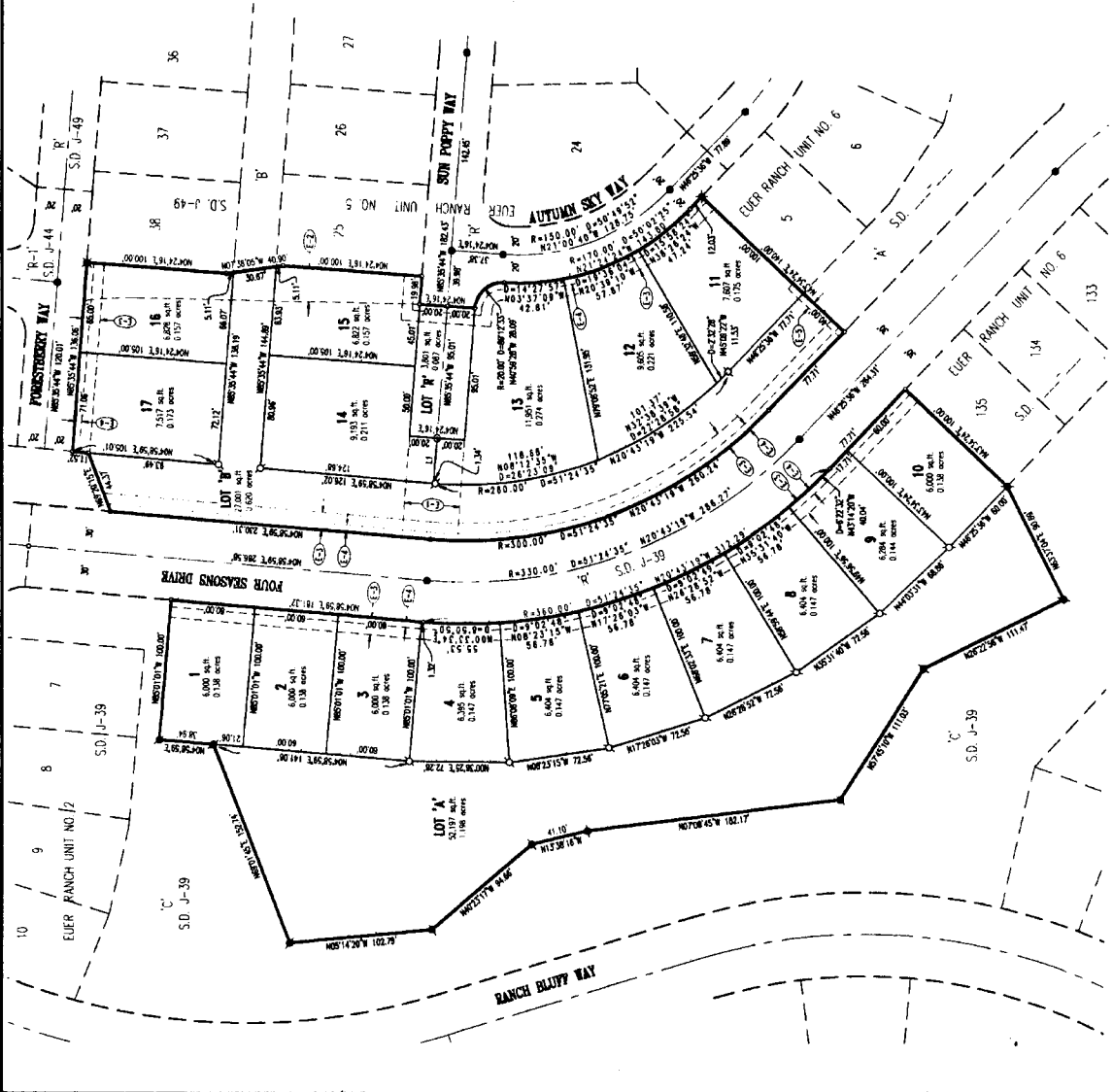
- LEGEND**
- DIMENSION POINT
 - ▭ ROAD 1-1/2" CLIP SHOWN "L.S. 9414" PER S.D. J-39
 - ▭ ROAD 3/4" CLIP SHOWN "L.S. 9414" PER S.D. J-39
 - ▭ ROAD SPIKE & NUMBER SHOWN "L.S. 9414"
 - SET 3/4" CLIP SHOWN "L.S. 9414"
 - SET SURVEY SPIKE AND NUMBER SHOWN "L.S. 9414"
 - IRREVOCABLE ORDER OF DESIGNATION
 - PUBLIC UTILITY EASEMENT
 - SHOWN DRAIN EASEMENT
 - SHOWN SEWER EASEMENT
 - WATER LINE EASEMENT
 - VEHICULAR ACCESS RESTRICTION

- NOTES**
1. ALL DIMENSIONS ON CURVED LINES ARE CHORD DISTANCES UNLESS OTHERWISE NOTED.
 2. THE AREA COMBINED WITHIN THE SUBDIVISION IS 4700 ACRES, CONSISTING OF 17 RESERVATION LOTS & 3 LETTERED LOTS.
 3. LOTS 11, 12, 13, 14, 15, 16, 17, 18, 19, 20, 21, 22, 23, 24, 25, 26, 27, 28, 29, 30, 31, 32, 33, 34, 35, 36, 37, 38, 39, 40, 41, 42, 43, 44, 45, 46, 47, 48, 49, 50, 51, 52, 53, 54, 55, 56, 57, 58, 59, 60, 61, 62, 63, 64, 65, 66, 67, 68, 69, 70, 71, 72, 73, 74, 75, 76, 77, 78, 79, 80, 81, 82, 83, 84, 85, 86, 87, 88, 89, 90, 91, 92, 93, 94, 95, 96, 97, 98, 99, 100, 101, 102, 103, 104, 105, 106, 107, 108, 109, 110, 111, 112, 113, 114, 115, 116, 117, 118, 119, 120, 121, 122, 123, 124, 125, 126, 127, 128, 129, 130, 131, 132, 133, 134, 135, 136, 137, 138, 139, 140, 141, 142, 143, 144, 145, 146, 147, 148, 149, 150, 151, 152, 153, 154, 155, 156, 157, 158, 159, 160, 161, 162, 163, 164, 165, 166, 167, 168, 169, 170, 171, 172, 173, 174, 175, 176, 177, 178, 179, 180, 181, 182, 183, 184, 185, 186, 187, 188, 189, 190, 191, 192, 193, 194, 195, 196, 197, 198, 199, 200, 201, 202, 203, 204, 205, 206, 207, 208, 209, 210, 211, 212, 213, 214, 215, 216, 217, 218, 219, 220, 221, 222, 223, 224, 225, 226, 227, 228, 229, 230, 231, 232, 233, 234, 235, 236, 237, 238, 239, 240, 241, 242, 243, 244, 245, 246, 247, 248, 249, 250, 251, 252, 253, 254, 255, 256, 257, 258, 259, 260, 261, 262, 263, 264, 265, 266, 267, 268, 269, 270, 271, 272, 273, 274, 275, 276, 277, 278, 279, 280, 281, 282, 283, 284, 285, 286, 287, 288, 289, 290, 291, 292, 293, 294, 295, 296, 297, 298, 299, 300, 301, 302, 303, 304, 305, 306, 307, 308, 309, 310, 311, 312, 313, 314, 315, 316, 317, 318, 319, 320, 321, 322, 323, 324, 325, 326, 327, 328, 329, 330, 331, 332, 333, 334, 335, 336, 337, 338, 339, 340, 341, 342, 343, 344, 345, 346, 347, 348, 349, 350, 351, 352, 353, 354, 355, 356, 357, 358, 359, 360, 361, 362, 363, 364, 365, 366, 367, 368, 369, 370, 371, 372, 373, 374, 375, 376, 377, 378, 379, 380, 381, 382, 383, 384, 385, 386, 387, 388, 389, 390, 391, 392, 393, 394, 395, 396, 397, 398, 399, 400, 401, 402, 403, 404, 405, 406, 407, 408, 409, 410, 411, 412, 413, 414, 415, 416, 417, 418, 419, 420, 421, 422, 423, 424, 425, 426, 427, 428, 429, 430, 431, 432, 433, 434, 435, 436, 437, 438, 439, 440, 441, 442, 443, 444, 445, 446, 447, 448, 449, 450, 451, 452, 453, 454, 455, 456, 457, 458, 459, 460, 461, 462, 463, 464, 465, 466, 467, 468, 469, 470, 471, 472, 473, 474, 475, 476, 477, 478, 479, 480, 481, 482, 483, 484, 485, 486, 487, 488, 489, 490, 491, 492, 493, 494, 495, 496, 497, 498, 499, 500, 501, 502, 503, 504, 505, 506, 507, 508, 509, 510, 511, 512, 513, 514, 515, 516, 517, 518, 519, 520, 521, 522, 523, 524, 525, 526, 527, 528, 529, 530, 531, 532, 533, 534, 535, 536, 537, 538, 539, 540, 541, 542, 543, 544, 545, 546, 547, 548, 549, 550, 551, 552, 553, 554, 555, 556, 557, 558, 559, 560, 561, 562, 563, 564, 565, 566, 567, 568, 569, 570, 571, 572, 573, 574, 575, 576, 577, 578, 579, 580, 581, 582, 583, 584, 585, 586, 587, 588, 589, 590, 591, 592, 593, 594, 595, 596, 597, 598, 599, 600, 601, 602, 603, 604, 605, 606, 607, 608, 609, 610, 611, 612, 613, 614, 615, 616, 617, 618, 619, 620, 621, 622, 623, 624, 625, 626, 627, 628, 629, 630, 631, 632, 633, 634, 635, 636, 637, 638, 639, 640, 641, 642, 643, 644, 645, 646, 647, 648, 649, 650, 651, 652, 653, 654, 655, 656, 657, 658, 659, 660, 661, 662, 663, 664, 665, 666, 667, 668, 669, 670, 671, 672, 673, 674, 675, 676, 677, 678, 679, 680, 681, 682, 683, 684, 685, 686, 687, 688, 689, 690, 691, 692, 693, 694, 695, 696, 697, 698, 699, 700, 701, 702, 703, 704, 705, 706, 707, 708, 709, 710, 711, 712, 713, 714, 715, 716, 717, 718, 719, 720, 721, 722, 723, 724, 725, 726, 727, 728, 729, 730, 731, 732, 733, 734, 735, 736, 737, 738, 739, 740, 741, 742, 743, 744, 745, 746, 747, 748, 749, 750, 751, 752, 753, 754, 755, 756, 757, 758, 759, 760, 761, 762, 763, 764, 765, 766, 767, 768, 769, 770, 771, 772, 773, 774, 775, 776, 777, 778, 779, 780, 781, 782, 783, 784, 785, 786, 787, 788, 789, 790, 791, 792, 793, 794, 795, 796, 797, 798, 799, 800, 801, 802, 803, 804, 805, 806, 807, 808, 809, 810, 811, 812, 813, 814, 815, 816, 817, 818, 819, 820, 821, 822, 823, 824, 825, 826, 827, 828, 829, 830, 831, 832, 833, 834, 835, 836, 837, 838, 839, 840, 841, 842, 843, 844, 845, 846, 847, 848, 849, 850, 851, 852, 853, 854, 855, 856, 857, 858, 859, 860, 861, 862, 863, 864, 865, 866, 867, 868, 869, 870, 871, 872, 873, 874, 875, 876, 877, 878, 879, 880, 881, 882, 883, 884, 885, 886, 887, 888, 889, 890, 891, 892, 893, 894, 895, 896, 897, 898, 899, 900, 901, 902, 903, 904, 905, 906, 907, 908, 909, 910, 911, 912, 913, 914, 915, 916, 917, 918, 919, 920, 921, 922, 923, 924, 925, 926, 927, 928, 929, 930, 931, 932, 933, 934, 935, 936, 937, 938, 939, 940, 941, 942, 943, 944, 945, 946, 947, 948, 949, 950, 951, 952, 953, 954, 955, 956, 957, 958, 959, 960, 961, 962, 963, 964, 965, 966, 967, 968, 969, 970, 971, 972, 973, 974, 975, 976, 977, 978, 979, 980, 981, 982, 983, 984, 985, 986, 987, 988, 989, 990, 991, 992, 993, 994, 995, 996, 997, 998, 999, 1000.
 4. ALL WHOLE POINTS COMMON TO NEAR LOT CORNERS ARE MARKED BY A 3/4" CLIP SHOWN "L.S. 9414". ALL REMAINING NEAR LOT CORNERS ARE MARKED BY A 3/4" ROAD WITH CLIP SHOWN "L.S. 9414".
 5. ALL FRONT LOT CORNERS ARE MARKED BY A SLASH IN THE TOP BACK OF CORNER AT THE PROPERTY LINE EXTENSION.
 6. LOT "B" SHOWN HEREON IS DESIGNATED AS A "PRIVATE STREET FOR THE BENEFIT AND GENERAL USE OF THE RESIDENTIAL LOTS SHOWN HEREON."
 7. P.L. & L. EASEMENT PER S.D. 148, REFERENCED IN THE PRELIMINARY TITLE REPORT D.Y. P.L. & L.E., TITLE COMPANY, IS NOT LOCATABLE FROM THE RECORD INFORMATION.

- BASES OF BEARINGS**
- THE BASIS OF BEARINGS FOR THIS SURVEY IS IDENTICAL WITH THAT OF THE FINAL MAP OF EUER RANCH UNIT NO. 2, RECORDED IN THE OFFICE OF THE COUNTY CLERK OF EL DORADO COUNTY, CALIFORNIA, AND IS BASED UPON MONUMENTS SHOWN AS FOUND HEREON.
- EASEMENT NOTES**
- (1) 10' PUBLIC UTILITY EASEMENT PER S.D. J-39
 - (2) 5' SHOWN SEWER EASEMENT PER S.D. J-39
 - (3) 12.5' PUBLIC UTILITY AND SLOPE EASEMENT PER S.D. J-39
 - (4) 5' PERSONAL EASEMENT PER S.D. J-39
 - (5) 5' PUBLIC UTILITY EASEMENT PER S.D. J-39

REFERENCES

LINE	SHOWN	LUSTRY
LINE	SHOWN	LUSTRY
LINE	SHOWN	LUSTRY
LINE	SHOWN	LUSTRY



J-64a

J-64a