

West Valley Village, Unit 3A

LOT 46 OF SD J-43, BEING A
 PORTION OF THE NORTH WEST 1/4 OF
 SECTION 24, T.9N., R.9E., MDM
 COUNTY OF EL DORADO STATE OF CALIFORNIA
 DECEMBER, 2006
 SHEET 4 OF 8
 SCALE: 1"=50'

CARLTON ENGINEERING INC.

BASIS OF BEARINGS

NOTES

ABANDONMENT OF EASEMENTS

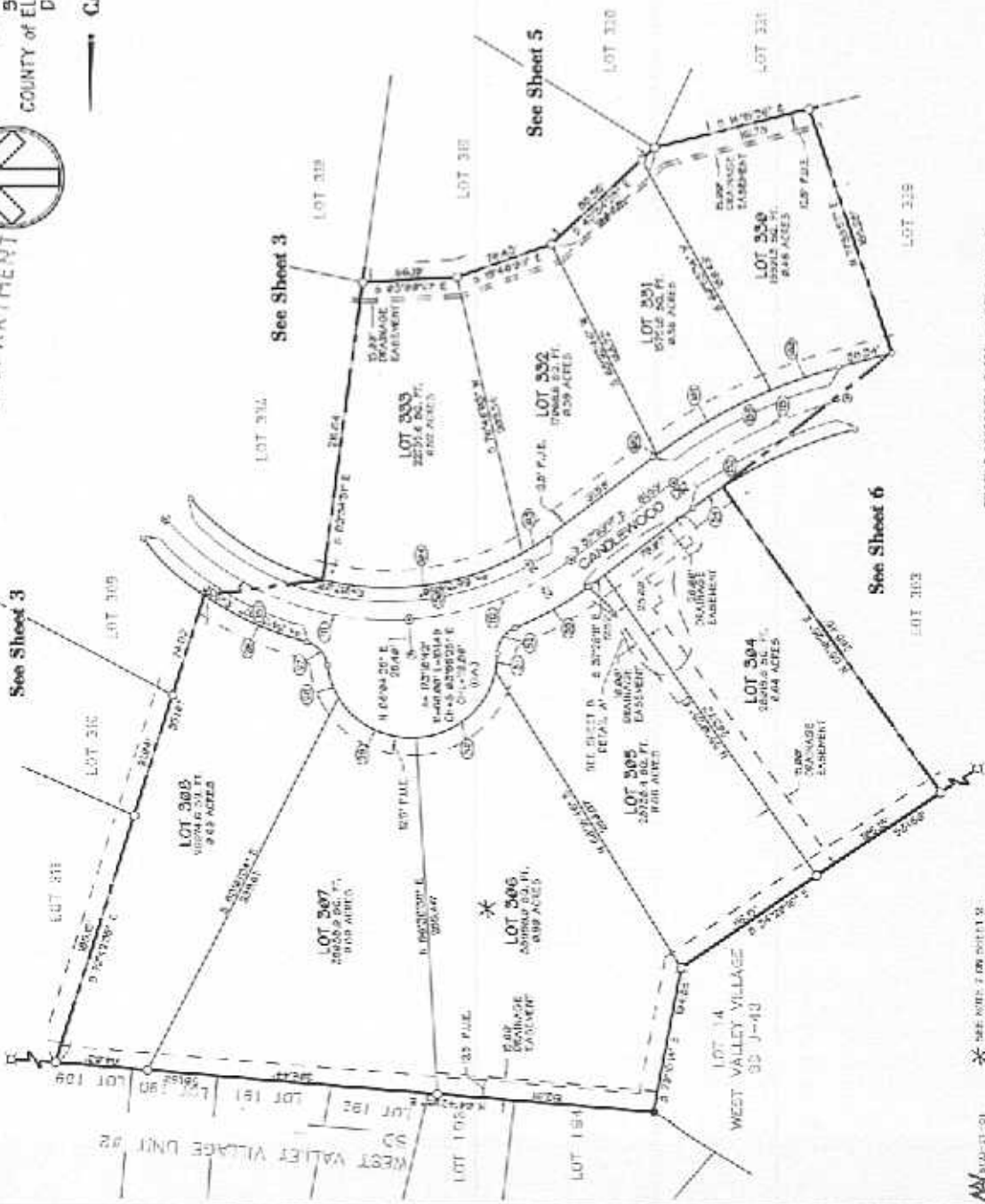
TABULATION

NO.	DESCRIPTION	DATE	BY
01	PRELIMINARY PLAN	12/15/06	CE
02	FINAL PLAN	12/15/06	CE
03	REVISION	12/15/06	CE
04	REVISION	12/15/06	CE
05	REVISION	12/15/06	CE
06	REVISION	12/15/06	CE
07	REVISION	12/15/06	CE
08	REVISION	12/15/06	CE
09	REVISION	12/15/06	CE
10	REVISION	12/15/06	CE
11	REVISION	12/15/06	CE
12	REVISION	12/15/06	CE
13	REVISION	12/15/06	CE
14	REVISION	12/15/06	CE
15	REVISION	12/15/06	CE
16	REVISION	12/15/06	CE
17	REVISION	12/15/06	CE
18	REVISION	12/15/06	CE
19	REVISION	12/15/06	CE
20	REVISION	12/15/06	CE
21	REVISION	12/15/06	CE
22	REVISION	12/15/06	CE
23	REVISION	12/15/06	CE
24	REVISION	12/15/06	CE
25	REVISION	12/15/06	CE
26	REVISION	12/15/06	CE
27	REVISION	12/15/06	CE
28	REVISION	12/15/06	CE
29	REVISION	12/15/06	CE
30	REVISION	12/15/06	CE
31	REVISION	12/15/06	CE
32	REVISION	12/15/06	CE
33	REVISION	12/15/06	CE
34	REVISION	12/15/06	CE
35	REVISION	12/15/06	CE
36	REVISION	12/15/06	CE
37	REVISION	12/15/06	CE
38	REVISION	12/15/06	CE
39	REVISION	12/15/06	CE
40	REVISION	12/15/06	CE
41	REVISION	12/15/06	CE
42	REVISION	12/15/06	CE
43	REVISION	12/15/06	CE
44	REVISION	12/15/06	CE
45	REVISION	12/15/06	CE
46	REVISION	12/15/06	CE
47	REVISION	12/15/06	CE
48	REVISION	12/15/06	CE
49	REVISION	12/15/06	CE
50	REVISION	12/15/06	CE

07 JAN 26 AM 11:21
 RECEIVED
 PLANNING DEPARTMENT

REFERENCES

- 1. DIMENSION FOUR-NORTH-NO ROUND OR SET
- 2. TOWN 3/4" C.I.P. DRAWN 12/15/06
- 3. SET 1/4" C.I.P. DRAWN 12/15/06
- 4. SET 1/4" C.I.P. DRAWN 12/15/06
- 5. SET 1/4" C.I.P. DRAWN 12/15/06



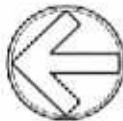
EXISTING ADDRESSING PANEL NUMBER 10-22-02

SEE WITH TOWN SHEET 32

TM 99-1359-F

West Valley Village, Unit 3A

LOT 46 OF SD J-43, BEING A
 PORTION OF THE NORTH WEST 1/4 OF
 SECTION 24, T.9N., R.8E., M.6M.,
 COUNTY OF EL DORADO,
 STATE OF CALIFORNIA
 DECEMBER, 2005
 SHEET 5 OF 8
 CARLTON ENGINEERING INC.

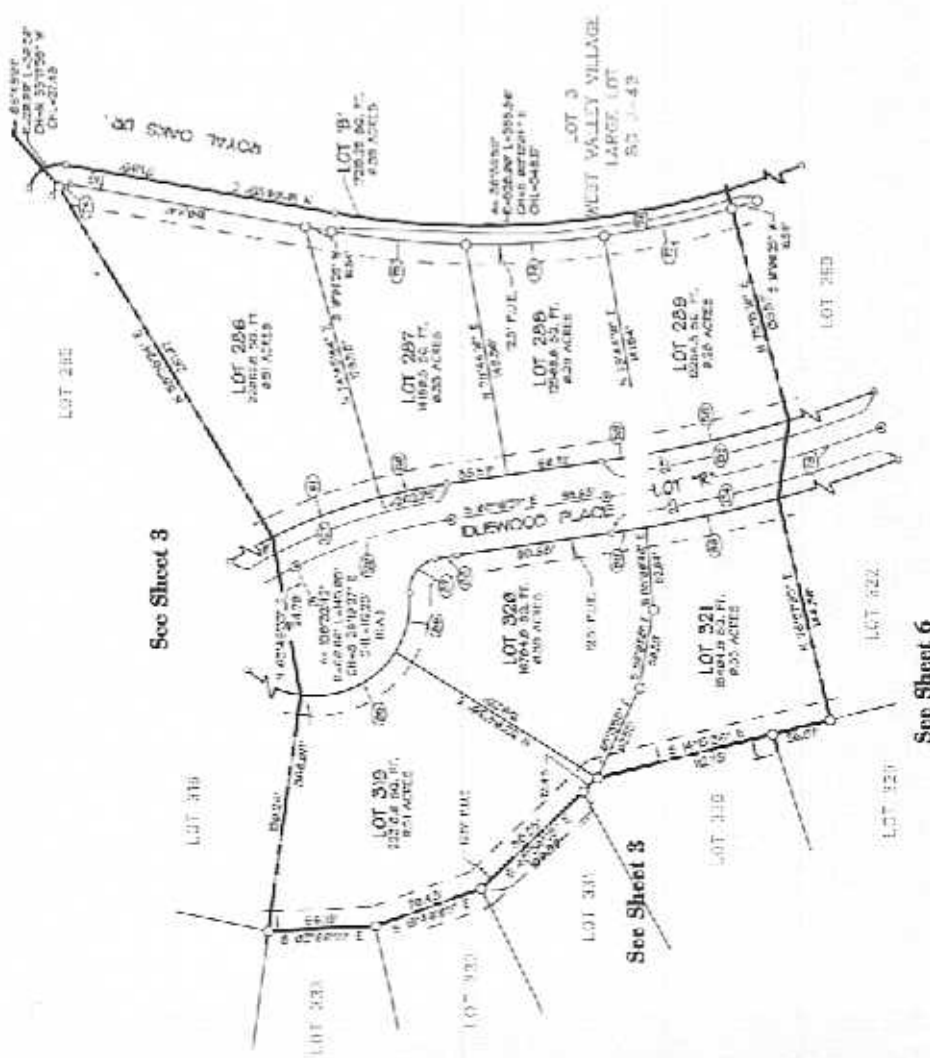


REFERENCES

SEE SHEET 2 OF 8

LEGEND

- DIMENSION FROM NORTH TO SOUTH OR SET
- 1/4" DIA. 3/16" C.I.P. STAMPED "LS 2506"
- SET 1/2" C.I.P. STAMPED "LS 918"
- SET 3/4" C.I.P. STAMPED "LS 598"
- ⊙ SET 1/2" WHEEL WITH MAG NAIL "LS 256"



BASIS OF BEARINGS

SEE SHEET 2 OF 8

NOTES

SEE SHEET 2 OF 8

ABANDONMENT OF EASEMENTS

SEE SHEET 2 OF 8

TABULATION

ALL DIMENSIONS A DIST LENGTH - RADIIUS DELTA

1	S 87°10' E	64.50	30.00	70.00	475.00
2	S 87°10' E	64.50	30.00	70.00	475.00
3	S 87°10' E	64.50	30.00	70.00	475.00
4	S 87°10' E	64.50	30.00	70.00	475.00
5	S 87°10' E	64.50	30.00	70.00	475.00
6	S 87°10' E	64.50	30.00	70.00	475.00
7	S 87°10' E	64.50	30.00	70.00	475.00
8	S 87°10' E	64.50	30.00	70.00	475.00
9	S 87°10' E	64.50	30.00	70.00	475.00
10	S 87°10' E	64.50	30.00	70.00	475.00
11	S 87°10' E	64.50	30.00	70.00	475.00
12	S 87°10' E	64.50	30.00	70.00	475.00
13	S 87°10' E	64.50	30.00	70.00	475.00
14	S 87°10' E	64.50	30.00	70.00	475.00
15	S 87°10' E	64.50	30.00	70.00	475.00
16	S 87°10' E	64.50	30.00	70.00	475.00
17	S 87°10' E	64.50	30.00	70.00	475.00
18	S 87°10' E	64.50	30.00	70.00	475.00
19	S 87°10' E	64.50	30.00	70.00	475.00
20	S 87°10' E	64.50	30.00	70.00	475.00
21	S 87°10' E	64.50	30.00	70.00	475.00
22	S 87°10' E	64.50	30.00	70.00	475.00
23	S 87°10' E	64.50	30.00	70.00	475.00
24	S 87°10' E	64.50	30.00	70.00	475.00
25	S 87°10' E	64.50	30.00	70.00	475.00
26	S 87°10' E	64.50	30.00	70.00	475.00
27	S 87°10' E	64.50	30.00	70.00	475.00
28	S 87°10' E	64.50	30.00	70.00	475.00
29	S 87°10' E	64.50	30.00	70.00	475.00
30	S 87°10' E	64.50	30.00	70.00	475.00
31	S 87°10' E	64.50	30.00	70.00	475.00
32	S 87°10' E	64.50	30.00	70.00	475.00
33	S 87°10' E	64.50	30.00	70.00	475.00
34	S 87°10' E	64.50	30.00	70.00	475.00
35	S 87°10' E	64.50	30.00	70.00	475.00
36	S 87°10' E	64.50	30.00	70.00	475.00
37	S 87°10' E	64.50	30.00	70.00	475.00
38	S 87°10' E	64.50	30.00	70.00	475.00
39	S 87°10' E	64.50	30.00	70.00	475.00
40	S 87°10' E	64.50	30.00	70.00	475.00
41	S 87°10' E	64.50	30.00	70.00	475.00
42	S 87°10' E	64.50	30.00	70.00	475.00
43	S 87°10' E	64.50	30.00	70.00	475.00
44	S 87°10' E	64.50	30.00	70.00	475.00
45	S 87°10' E	64.50	30.00	70.00	475.00
46	S 87°10' E	64.50	30.00	70.00	475.00
47	S 87°10' E	64.50	30.00	70.00	475.00
48	S 87°10' E	64.50	30.00	70.00	475.00
49	S 87°10' E	64.50	30.00	70.00	475.00
50	S 87°10' E	64.50	30.00	70.00	475.00

JAN 26 AM 11:21
 RECEIVED
 ENGINEERING DEPARTMENT

SEE THIS ADDRESS FOR MORE SHEETS TM-99-40

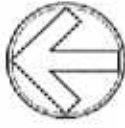
TM 99-1359-F

MADE IN U.S.A.

West Valley Village, Unit 3A

LOT 46 OF SD J-43, BEING A
PORTION OF THE NORTH WEST 1/4 OF
SECTION 24, T.9N., R.6E., M.6M.
COUNTY OF EL DORADO
STATE OF CALIFORNIA
DECEMBER, 2006
1"=50'

SHEET 6 OF 8
CARLTON ENGINEERING INC.



TABULATION

LINE	BEARING	LENGTH	CURVATURE	DELTA
1	N 23°56'48" E	10.00	0.0000	0.0000
2	N 70°00'00" E	30.00	0.0000	0.0000
3	S 20°18'12" E	16.41	16.82	33.36
4	N 58°45'12" W	34.85	34.86	24.09
5	S 20°18'12" E	43.84	43.86	70.89
6	S 20°18'12" E	100.00	100.00	170.89
7	S 20°18'12" E	52.56	52.56	94.94
8	S 70°00'00" E	52.27	0.00	54.89
9	N 70°00'00" E	76.42	76.41	80.29
10	S 20°18'12" E	81.22	81.22	100.00
11	S 20°18'12" E	19.00	19.00	20.89
12	N 24°27'22" W	24.56	24.56	29.32
13	S 21°53'34" E	10.25	10.25	10.78
14	N 20°15'00" W	151.70	151.70	270.70
15	S 49°00'00" E	202.40	202.40	370.70
16	N 49°00'00" W	149.49	149.49	270.70
17	S 10°00'00" E	570.00	570.00	1000.00
18	N 24°27'22" W	15.28	15.28	18.89
19	S 10°00'00" E	101.81	101.81	180.89
20	S 10°00'00" E	207.50	207.50	370.70
21	S 42°15'40" E	543.53	543.53	970.70
22	N 47°00'00" W	100.00	100.00	170.70
23	N 60°35'48" W	24.03	24.03	29.89
24	N 60°35'48" W	64.67	64.67	80.89

LEGEND

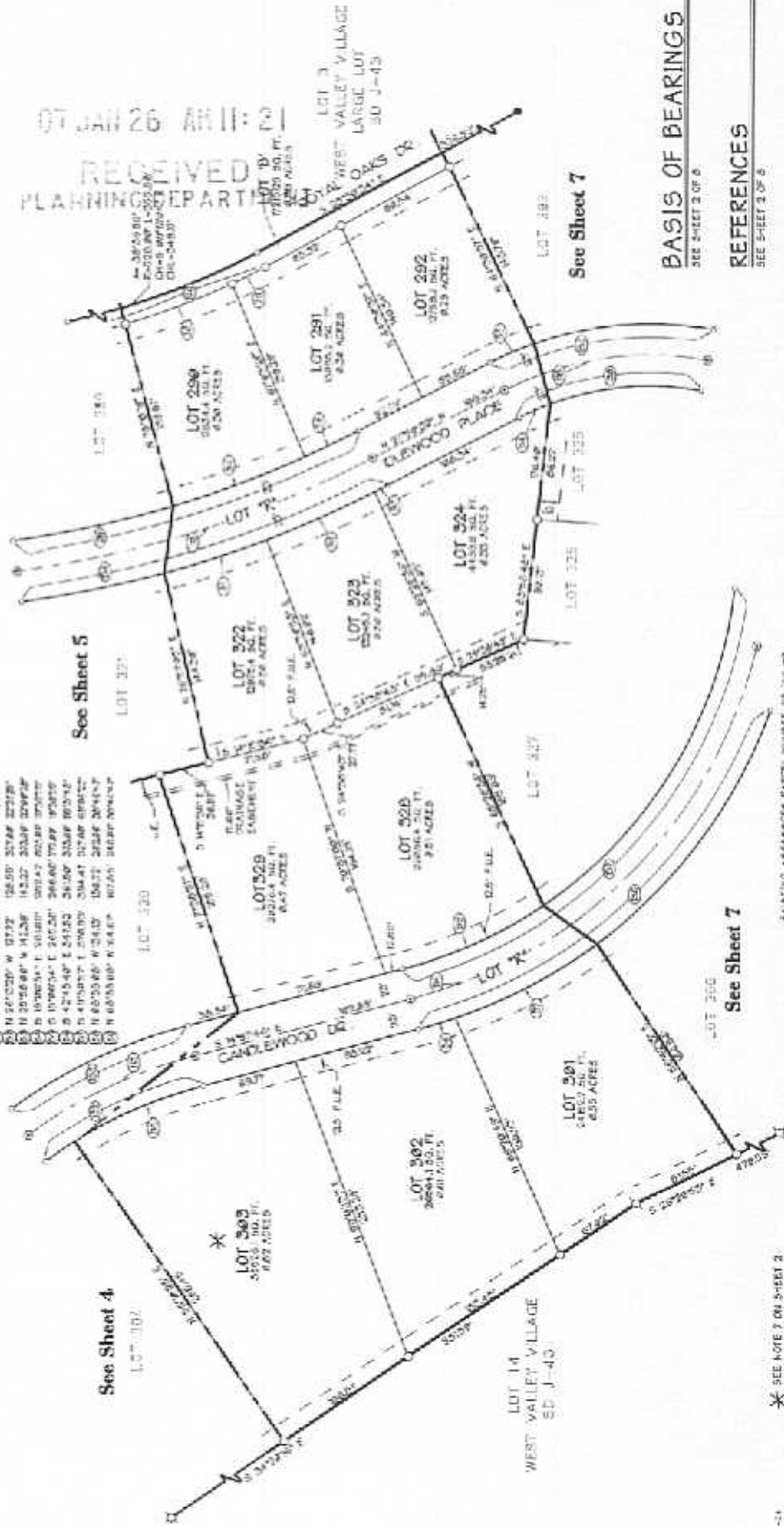
- 1" DIMENSION PRINT NOTICES ROUND OR SET
- ◆ ROUND 3/4" CLIP, STAMPED 1/8" DIA.
- ▲ 3/4" 1-1/2" CLIP, STAMPED 1/8" DIA.
- 3/4" 2-1/2" CLIP, STAMPED 1/8" DIA.
- 3/4" 1-1/2" WASHES WITH MAG. NAIL, 1/8" DIA.

NOTES

SEE SHEET 3 OF 8

ABANDONMENT OF EASEMENTS

SEE SHEET 3 OF 8



BASIS OF BEARINGS
SEE SHEET 3 OF 8

REFERENCES
SEE SHEET 3 OF 8

EXISTING ADJACENT PARCELS SHOWN IN RED

SEE NOTE 7 ON SHEET 2

AW 100-0-04

TMI 99-1359-F

West Valley Village, Unit 3A

LOT 46 OF SD J-43, BEING A
 PORTION OF THE NORTH WEST 1/4 OF
 SECTION 24, T.9N., R.9E., M.D.M.
 COUNTY OF EL DORADO STATE OF CALIFORNIA
 DECEMBER, 2006
 SHEET 7 OF 8
 1"=50'

BASIS OF BEARINGS
 SEE SHEET 3 OF 8

NOTES
 SEE SHEET 3 OF 8

REFERENCES
 SEE SHEET 3 OF 8

ABANDONMENT OF EASEMENTS
 SEE SHEET 3 OF 8

TABULATION

NO.	COORDINATION & DIST. LENGTH	BEARING	BEARING DELTA
01	5 44.4167' N	75.53°	05.27°
02	0 82.9437' W	82.00°	06.20°
03	8 27.0147' W	37.30°	03.54°
04	5 09.0000' N	47.20°	04.20°
05	3 34.0136' E	42.14°	03.36°
06	0 40.0164' E	31.04°	01.90°
07	5 14.0056' E	25.67°	01.89°
08	0 00.0222' W	0.67°	01.89°
09	5 39.0000' N	35.40°	01.89°
10	0 41.0032' W	30.47°	01.89°
11	5 54.0164' W	30.19°	01.89°
12	0 02.0222' E	2.69°	01.89°
13	5 00.0000' N	35.24°	01.89°
14	0 42.0000' W	30.19°	01.89°
15	5 00.0000' N	35.24°	01.89°
16	0 42.0000' W	30.19°	01.89°
17	5 00.0000' N	35.24°	01.89°
18	0 42.0000' W	30.19°	01.89°
19	5 00.0000' N	35.24°	01.89°
20	0 42.0000' W	30.19°	01.89°
21	5 00.0000' N	35.24°	01.89°
22	0 42.0000' W	30.19°	01.89°
23	5 00.0000' N	35.24°	01.89°
24	0 42.0000' W	30.19°	01.89°
25	5 00.0000' N	35.24°	01.89°
26	0 42.0000' W	30.19°	01.89°
27	5 00.0000' N	35.24°	01.89°
28	0 42.0000' W	30.19°	01.89°
29	5 00.0000' N	35.24°	01.89°
30	0 42.0000' W	30.19°	01.89°
31	5 00.0000' N	35.24°	01.89°
32	0 42.0000' W	30.19°	01.89°
33	5 00.0000' N	35.24°	01.89°
34	0 42.0000' W	30.19°	01.89°
35	5 00.0000' N	35.24°	01.89°
36	0 42.0000' W	30.19°	01.89°
37	5 00.0000' N	35.24°	01.89°
38	0 42.0000' W	30.19°	01.89°
39	5 00.0000' N	35.24°	01.89°
40	0 42.0000' W	30.19°	01.89°
41	5 00.0000' N	35.24°	01.89°
42	0 42.0000' W	30.19°	01.89°
43	5 00.0000' N	35.24°	01.89°
44	0 42.0000' W	30.19°	01.89°
45	5 00.0000' N	35.24°	01.89°
46	0 42.0000' W	30.19°	01.89°
47	5 00.0000' N	35.24°	01.89°
48	0 42.0000' W	30.19°	01.89°
49	5 00.0000' N	35.24°	01.89°
50	0 42.0000' W	30.19°	01.89°

LEGEND

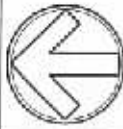
- DIMENSION POINT - ALWAYS FOUND ON SET
- FOUND ON P.L. - ALWAYS FOUND ON SET
- SET 1/4" CL. STAMPED 1/8" DIA.
- SET 3/4" CL. STAMPED 3/8" DIA.
- SET 1/2" NUMBER WITH AND RAIL TO 1/8" DIA.



* SEE NOTE 7 IN SHEET 5
 EXISTING ASSESSORS PARCELS, NUMBER 24-000-000

TM 99-1359-F





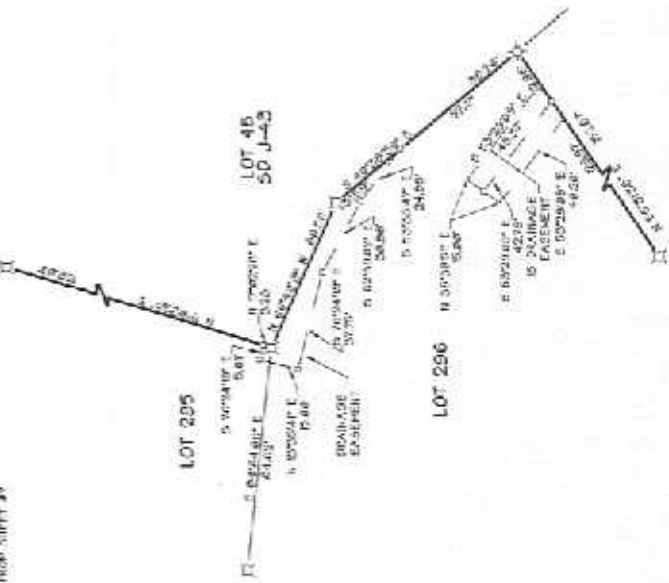
West Valley Village, Unit 3A

LOT 46 OF SD J-43, BEING A
 PORTION OF THE NORTH WEST 1/4 OF
 SECTION 24, T.38N., R.8E., M.1M.
 COUNTY OF EL DORADO STATE OF CALIFORNIA
 DECEMBER, 2006 1"=50'
 SHEET B OF B
 CARLTON ENGINEERING INC.

DETAIL 'A' (1"=30')



DETAIL 'B' (1"=30')



LEGEND

- C DIMENSION POINTS FOUND ON SET
- POINT 34" CLIP STAMPED "LS 2004"
- SET 1/2" CLIP STAMPED "LS 9/85"
- SET 3/4" CLIP STAMPED "LS 8/81"
- ⊙ SET 1/2" WOODS WITH MAG NAIL "LS 10/8"

BASIS OF BEARINGS

SEE SHEET 1 OF B

NOTES

SEE SHEET 2 OF B

ABANDONMENT OF EASEMENTS

SEE SHEET 2 OF B

REFERENCES

SEE SHEET 3 OF B

07 JAN 26 AM 11:22
 RECEIVED
 PLANNING DEPARTMENT

TM 99-1359-F