



RESOLUTION NO. **075-2018**

OF THE BOARD OF SUPERVISORS OF THE COUNTY OF EL DORADO

WHEREAS, on May 8, 2018, this Board held a public hearing after notice thereof, as provided by law, on the request for the establishment of agricultural preserves as set forth herein.

NOW, THEREFORE, BE IT RESOLVED by the Board of Supervisors of the County of El Dorado that this Board does hereby establish the following agricultural preserve comprising of the Assessor's Parcel Number, as shown in Exhibit A, as set forth herein:

<u>Preserve No.</u>	<u>Owners</u>	<u>Parcel No.</u>	<u>Acres</u>	<u>Area</u>
334	Rombauer Vineyards Inc.	046-071-27	217.68	Somerset

PASSED AND ADOPTED by the Board of Supervisors of the County of El Dorado at a regular meeting of said Board, held the 8th day of May, 2018, by the following vote of said Board:

Attest:

James S. Mitrisin
Clerk of the Board of Supervisors

By: _____

Deputy Clerk

Ayes: Ranalli, Frentzen, Veerkamp, Novasel

Noes: None

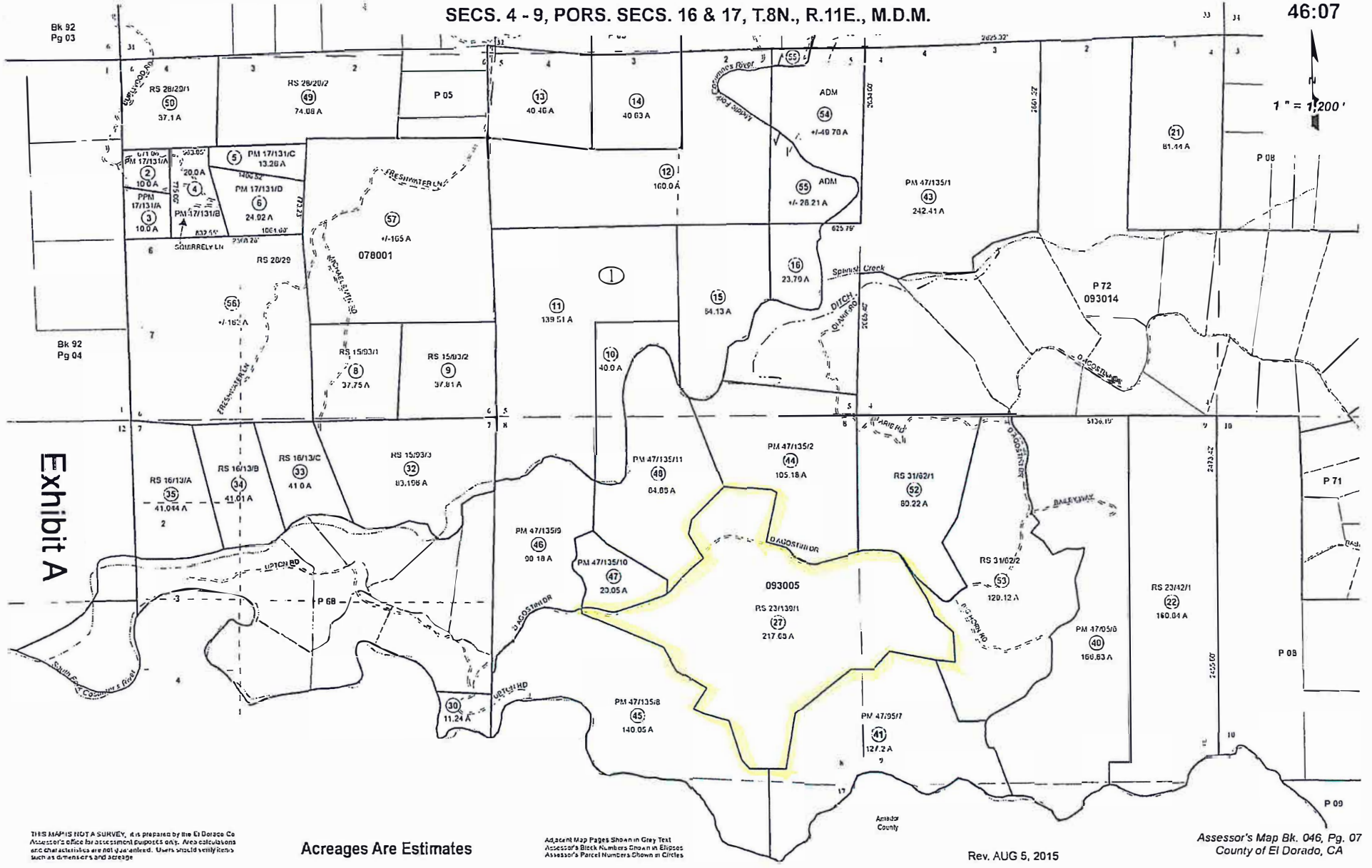
Absent: Hidahl

Chairman, Board of Supervisors
Michael Ranalli

SECS. 4 - 9, PORS. SECS. 16 & 17, T.8N., R.11E., M.D.M.

46:07

1" = 1,200'



Bk 92
Pg 03

Bk 92
Pg 04

Exhibit A

THIS MAP IS NOT A SURVEY. It is prepared by the El Dorado Co Assessor's Office for assessment purposes only. Area calculations and other statistics are not guaranteed. Users should verify items such as dimensions and acreage.

Acreages Are Estimates

Adjacent Map Pages Shown in Gray Text
Assessor's Block Numbers Shown in Ellipses
Assessor's Parcel Numbers Shown in Circles

Rev. AUG 5, 2015

Assessor's Map Bk. 046, Pg. 07
County of El Dorado, CA