

JOE'S SKATE PARK

Final Report



**Prepared by:
El Dorado County Youth Commission**

**Presented to El Dorado County Board of Supervisors
May 5, 2008**



**EL DORADO COUNTY
YOUTH COMMISSION**
311 FAIR LANE, PLACERVILLE, CA 95667



Saving Joe's Skate Park ~ A Community Collaborative

Mission: *To foster multi-generational stewards who will create and maintain a healthy and positive atmosphere for all users of Joe's Skate Park in the Fairgrounds Recreation Area.*

Vision: *To build a community of educated, engaged, powerful people who will collectively find solutions for the problems facing Joe's Skate Park and our community's youth.*

In response to the closure of Joe's Skate Park in Placerville, a group of committed and concerned citizens of all ages have come together in a unique and innovative way. Representing the El Dorado County Youth Commission, the local skate population, BMX riders, county departments, private citizens, churches, Boys & Girls Club, parents of skaters and more, this group is working together to propose that Joe's Skate Park be reopened under a multi-level plan of action that will include user education, community involvement, and monthly review. This system of accountability will be ongoing and will ensure that any potential problems are addressed in an aggressive, timely and appropriate manner. The ultimate goal is to provide a safe, thriving skate park for the entire community to enjoy for years to come.

What We Know:

- Currently, there is no safe and/or designated place to skateboard in the Placerville area.
- Placerville and its surrounding communities are home to hundreds, if not thousands, of skaters and potential park users (e.g. BMX riders, inline skaters, and scooter users).
- It is especially alarming that obesity and other health-related issues are reaching epidemic levels among youth populations. Skateboarding certainly constitutes physical activity that promotes fitness and balance.
- Despite only operating one day a week, Joe's Skate Park has registered almost 700 users from within our county and its surrounding areas.
- Joe's Skate Park can potentially suffer from overuse as all users are compelled to be there on the same day. This creates a serious safety issue which will only escalate as summer approaches.
- Joe's Skate Park is an underused jewel in this community, nestled in the middle of an already thriving recreational area. Many families have children that skate, and the park has the potential to be yet another reason to visit our beautiful county.
- Joe's Skate Park was well-built and is one of the nicest skate parks in Northern California.
- Joe's Skate Park brings economic opportunity to El Dorado County.
- Skate parks located in South Lake Tahoe, Cameron Park and throughout California are currently succeeding in a safe and positive way under self supervision. Joe's Skate Park will equally thrive as a self-supervised park through a genuine collaborative effort of community partners, local law enforcement and park users.

The YC believes change is imminent. We believe that through the strength of youth and adults partnering together, with youth as the core change agents, and with the full support of the El Dorado County Youth Commission, Joe's Skate Park can be reopened permanently under an agreement of trust and personal accountability.



**EL DORADO COUNTY
YOUTH COMMISSION**
311 FAIR LANE, PLACERVILLE, CA 95667



Recommended Plan of Action:

To reopen Joe's Skate Park in a series of stages, ultimately operating under self-supervision and Government Health and Safety Code Section 831.7.

1. Identify a county staff person to provide assistance, guidance and leadership to Joe's Skate Park Collaborative. The county staff person will serve under the Board of Supervisors in administering and managing it as a county park, additionally providing supervision, guidance and direction to the Volunteer Skate Park Coordinator. Also, in collaboration with the Volunteer Skate Park Coordinator, this county staff person will implement a viable recreational program for Joe's Skate Park with the support and resources provided from partners in the Joe's Skate Park Community Collaborative.

2. A Volunteer Skate Park Coordinator will:

- A. Oversee the park and its users.
- B. Provide leadership and direction to Joe's Skate Park Collaborative.
- C. Serve as the liaison between the collaborative and the assigned county staff person.
- D. Coordinate, schedule and assist in training Joe's Skate Park Docents.
- E. Coordinate the scheduling the park as well as all special events (e.g. Skate Competitions, Skate Club practice hours, etc.).

3. Joe's Skate Park Community Collaborative (see attached wheel diagram) will serve as a "Neighborhood Watch" in order to bring the community together to ensure all users of the park enjoy a safe and friendly recreational environment.

Recommended Modes of Operation:

**see liability coverage details at bottom of wheel diagram*

1. Skate Clubs-

- El Dorado County 4H will enroll and insure youth in high schools, middle schools, and 4H.
- Offer further recreational opportunities for users of the park.
- Establish users as stewards of the park
- Educate young people in citizenship and appropriate park behavior.
- Establish meaningful relationships between young people and law enforcement while ultimately providing additional support.

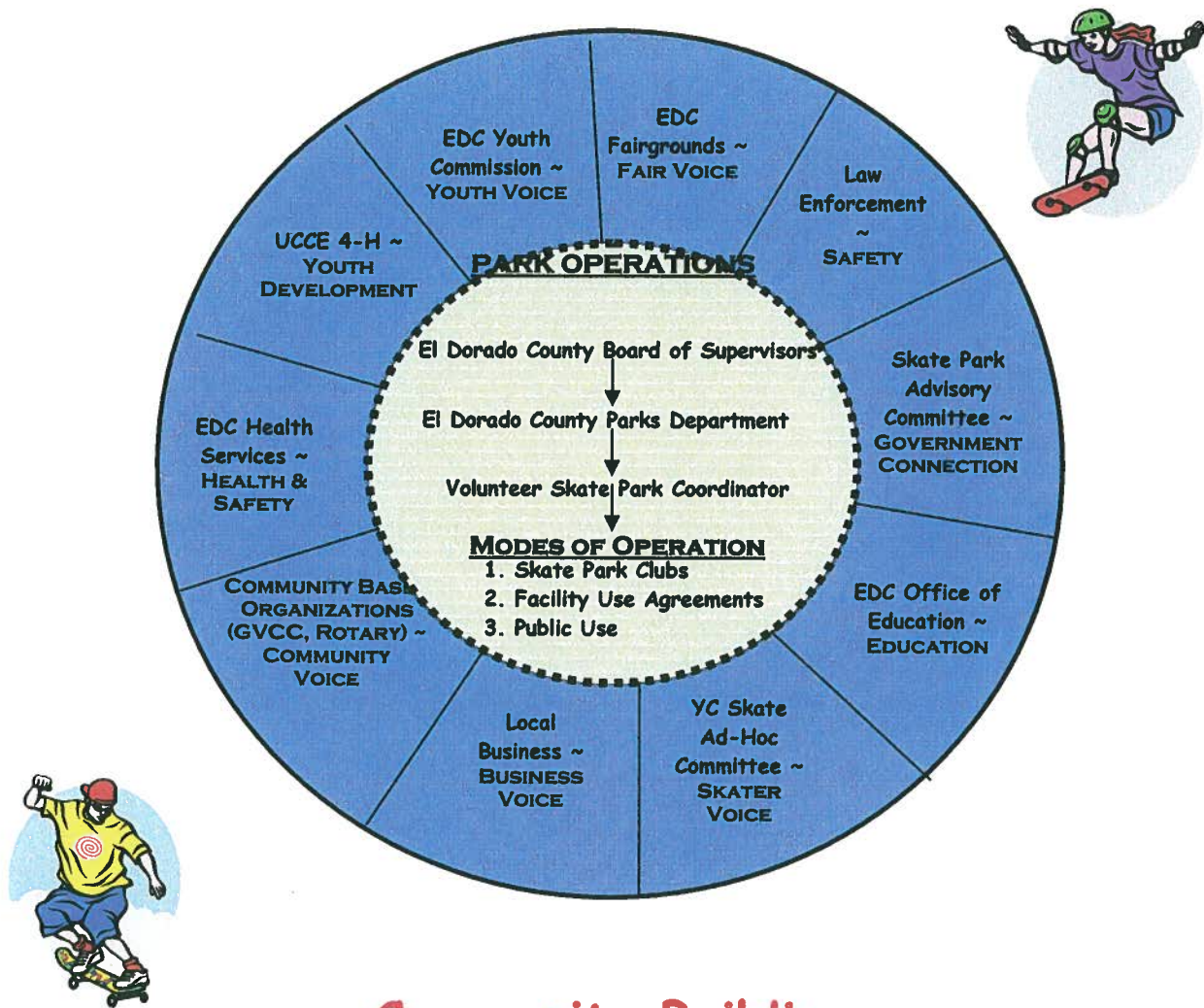
2. Facility Use Agreements-Will offer fully supervised recreational opportunities for users of the park.

3. Public Use-Offer an educational docent program in coordination with the county park staff person, the Volunteer Skate Park Coordinator, and resources provided by Joe's Skate Park Community Collaborative.

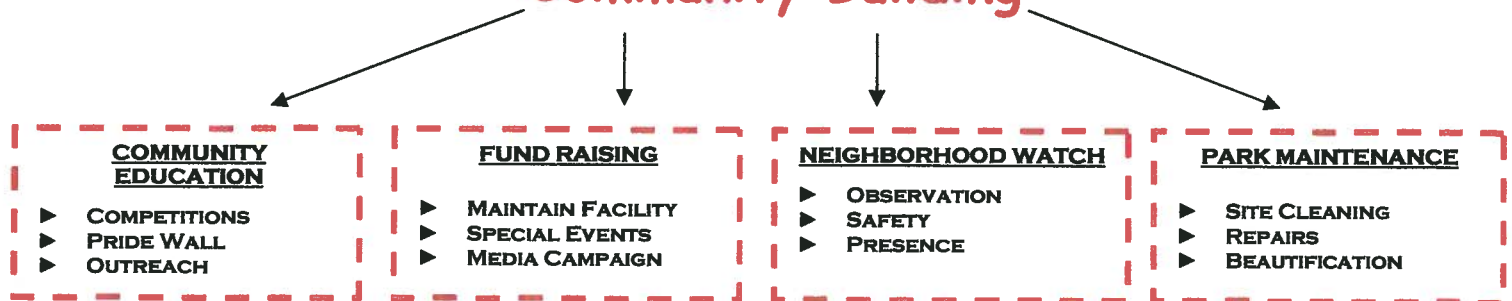
Joe's Skate Park Collaborative

The mission of Joe's Skate Park Collaborative is to foster multi-generational stewards who will create and maintain a healthy and positive atmosphere for all users of Joe's Skate Park in the Fairgrounds Recreation Area. The vision is to build a community of educated, engaged, powerful people who will collectively find solutions for the problems facing Joe's Skate Park and our community's youth.

Resource & Operational Wheel



Community Building



*Liability Modes of Operation: 1) Skate Park Clubs- ANR office of Risk Services – University of California Cooperative Extension; 2) Facility Use Agreements – El Dorado County Risk Management a division of Human Resources; 3) Public Use – Per Government Health and Safety Code 831.7 in coordination with docent program and part of Joe's Skate Park Collaborative. Docents to be insured by (subject to approval of insurance carrier of EDCOE) El Dorado County Office of Education.

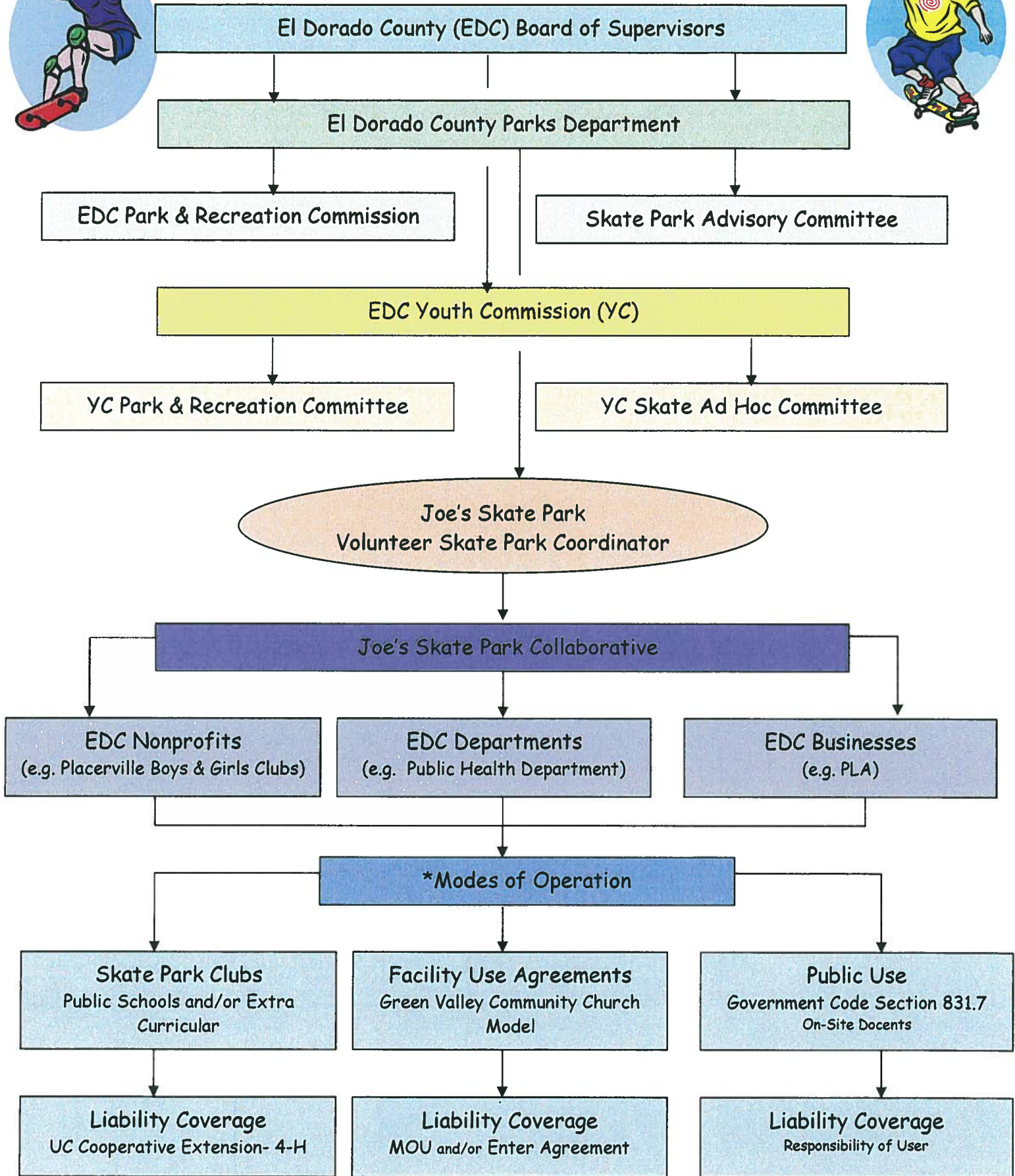
Joe's Skate Park Collaborative Resources

**Supplemental document to Resource Wheel Diagram*

WHO	RESOURCE
EDC Youth Commission (YC)	"Youth Voice" Working in an advisory capacity to the El Dorado County Board of Supervisors, the YC will continue to support the YC Skate Ad Hoc committee.
UCCE 4-H Youth Development Program	"Youth Development" 4-H encourages youth participation in civic engagement and project based learning. The 4-H will support the training of docents, volunteers for leadership of the skate clubs & provide liability insurance for the skate program.
EDC Health Services	"Health and Safety" Will provide alcohol/drug education and prevention strategies. Will partner in the training of docents & skate club adult volunteers providing expertise in working with young people. Assist in other youth development strategies and in support of the YC and YC Skate Ad Hoc Committee.
YC Ad Hoc Committee	"Skater Voice" Friends of the Skate Park, a local group of skaters, along with other park users have formed an Ad Hoc Committee on the YC to serve as the voice for area skaters. As EDGABY grant recipients, the committee is working on starting skate clubs, competitions, and overall park support.
Community Based Organizations	"Community Voice" Green Valley Community Church will continue to provide park supervision on Saturdays through the current MOU agreement. Placerville Rotary is considering providing surveillance cameras to be used for security and live web feed for the Placerville Police Department and other interested parties (e.g. skaters, parents, tourists).
Local Business	"Business Voice" A local business would like to submit a business proposal to open a business in the small building to support the effort of the neighborhood watch.
EDC Office of Education	"Education" Is supportive of skate park effort and is researching the intent to support the liability insurance for the docents.
Skate Park Advisory Committee	"Government Connection" The committee appointed by the El Dorado County Board of Supervisors will listen to concerns of the public, Joe's Skate Park Collaborative and others, and insure that the BOS is informed of all issues and concerns.
Law Enforcement	"Safety" Local law enforcement will patrol the area the park and further support the efforts of Joe's Skate Park Collaborative.
EDC Fairgrounds	"Fair Voice" As Joe's Skate Park is within the fairgrounds recreation area, it is imperative to continue to hear the voice of the fair, and to be able to respond to concerns in a timely manner.



JOE'S SKATE PARK PLAN OF ACTION



**Please refer to Joe's Skate Park Resource & Operational Wheel.*