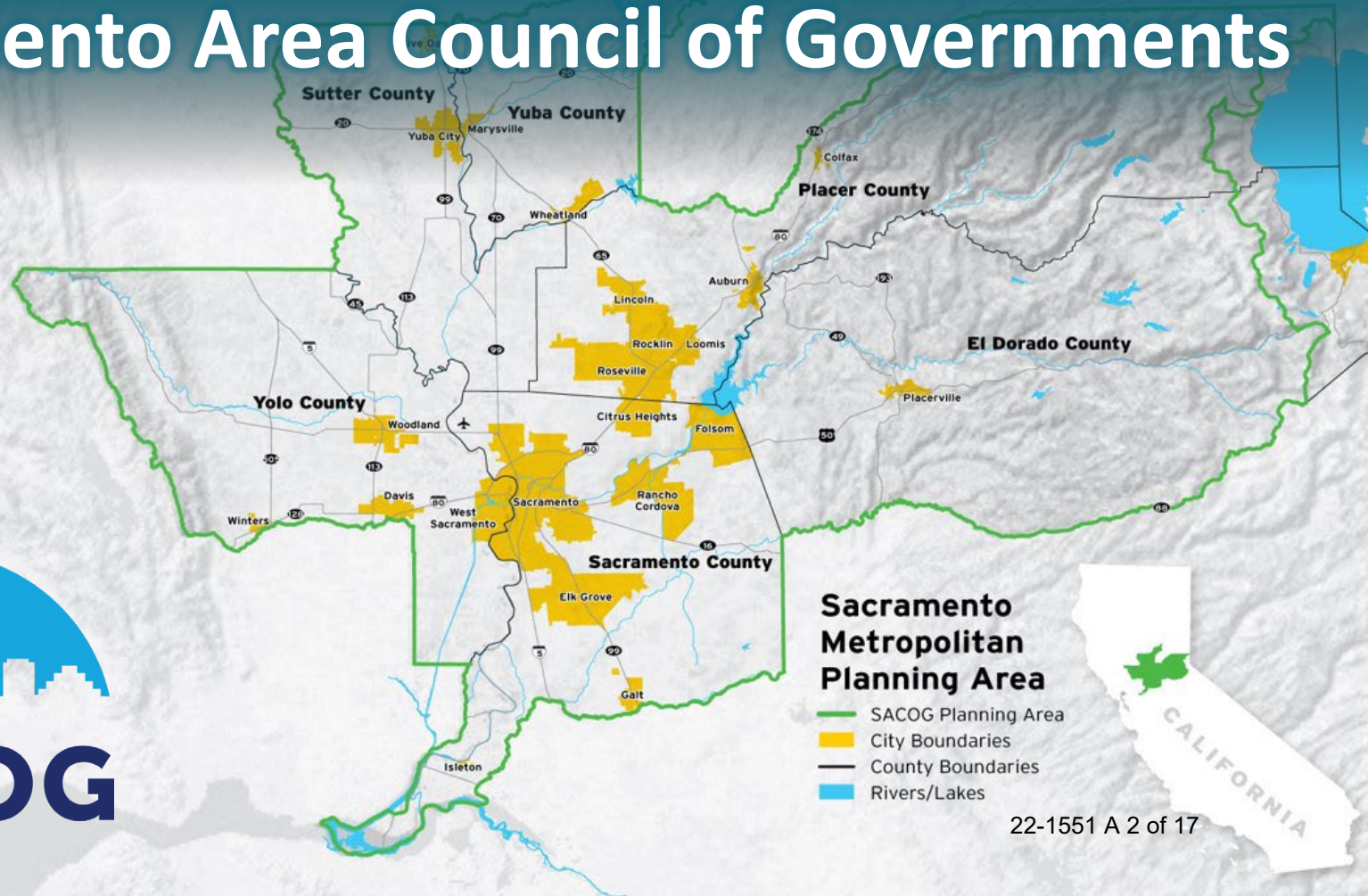




The Big Picture: Long Range Regional Planning

Summer 2022

Sacramento Area Council of Governments



SACOG

Sacramento Metropolitan Planning Area

- SACOG Planning Area
- City Boundaries
- County Boundaries
- Rivers/Lakes





BLUEPRINT

METROPOLITAN TRANSPORTATION PLAN
SUSTAINABLE COMMUNITIES STRATEGY

Regional Planning



Balancing Needs



Triple Bottom Line Framework



Equity



Economy

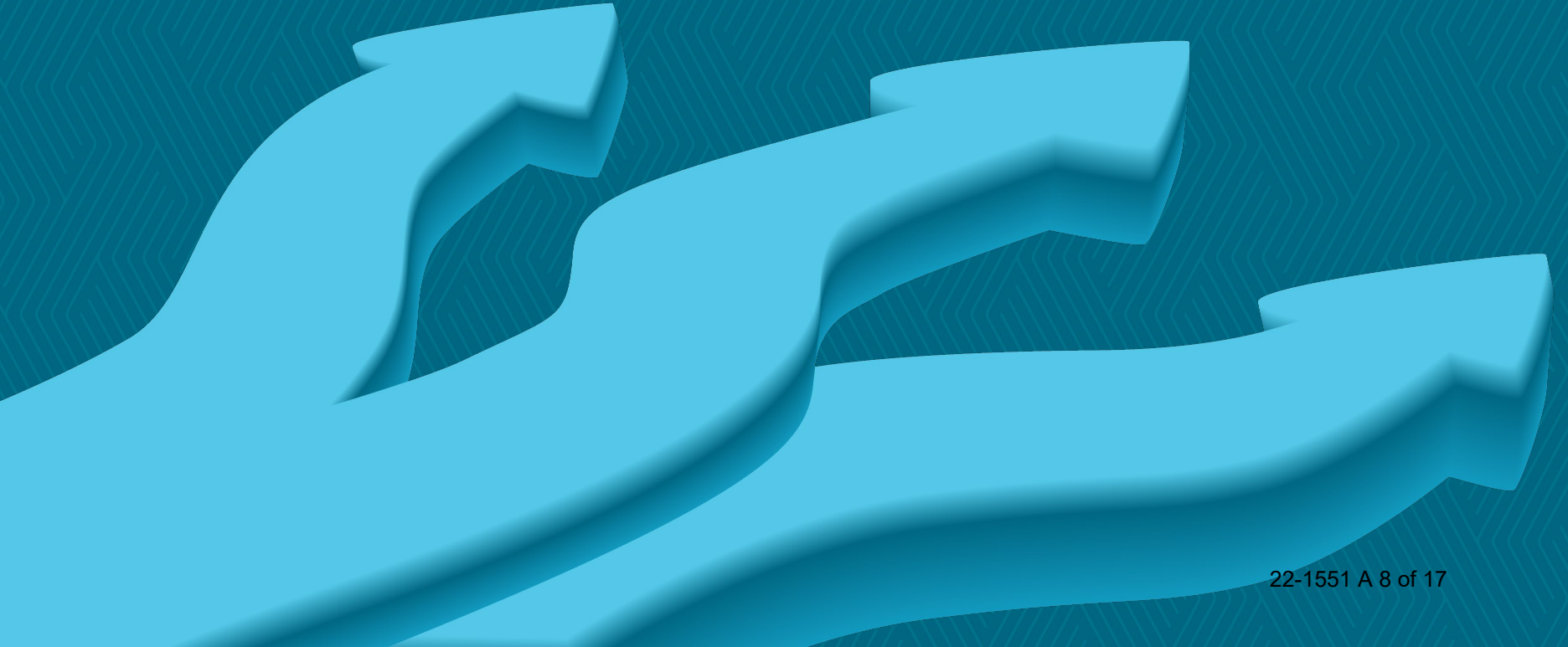


Environment

Transportation

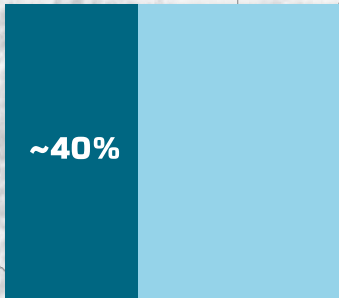


Future Pathways

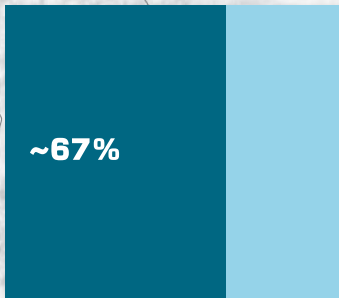


1

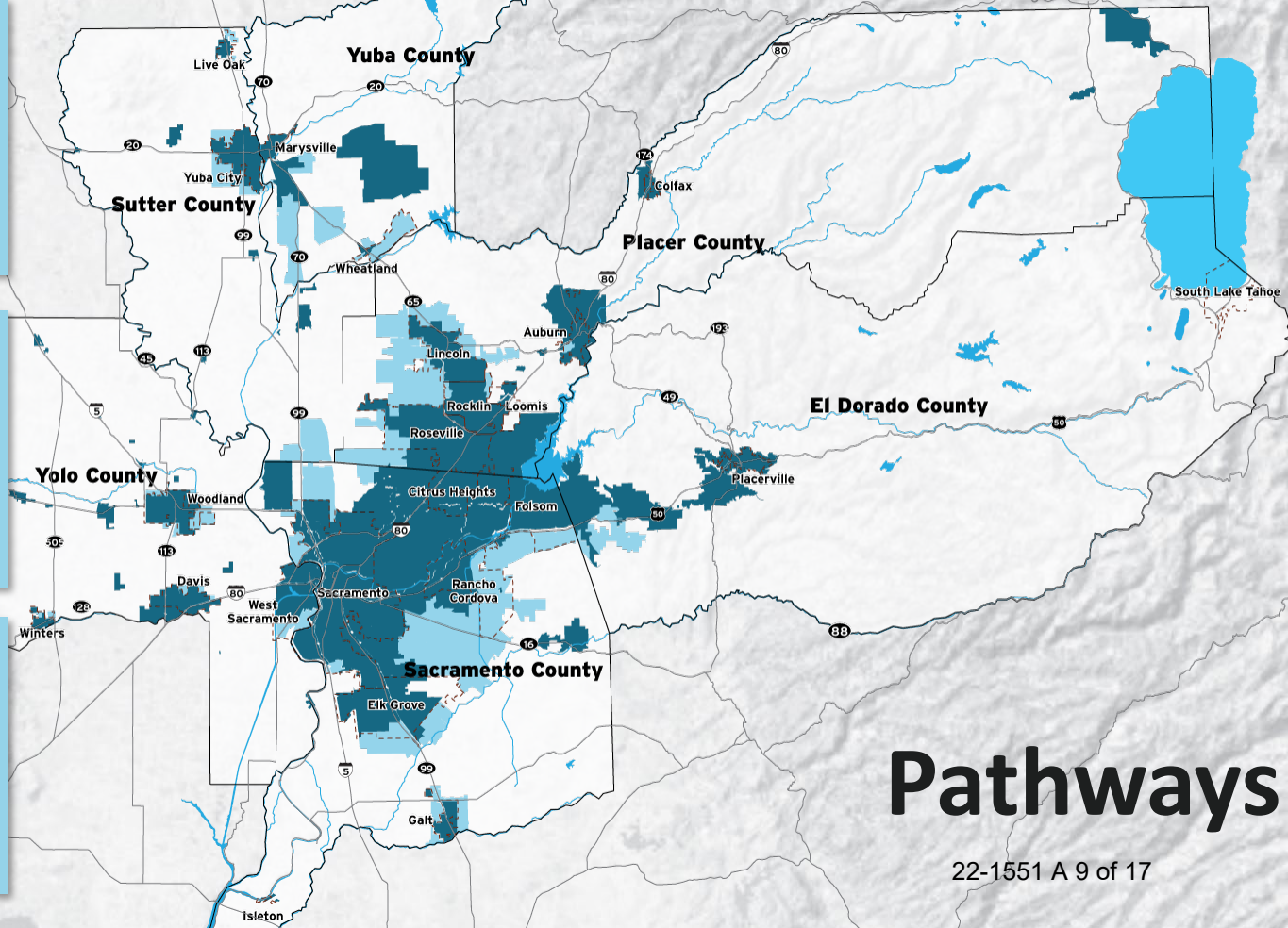
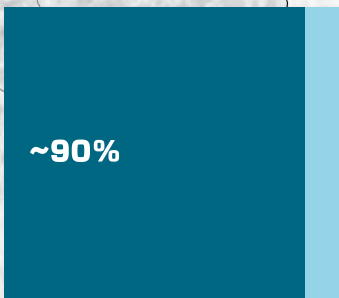
HOUSING GROWTH IN EXISTING COMMUNITIES



2



3



Pathways

Outreach and Engagement



How do you
get around?

tell us your
thoughts!

¿Como viajas?

¡di nos tus opiniones!



Timing



- **Education & Outreach**
 - **Three Pathways**
 - **Elected Info Sessions**
 - **Preferred Pathway**
- Adoption**

Sacramento Area Council of Governments
Racial Equity Statement of Change and Commitment
Adopted February 17, 2022

The Sacramento Area Council of Governments (SACOG) acknowledges that residents living in the greater six-county Sacramento region face significant inequities, resulting in economic and social divides that exist by race and ethnicity, by income, and by urban and rural location. SACOG is committed to tackling inequities and disparities in all forms. This commitment is to advancing racial equity in order to build a thriving and equitable future for all residents of the Sacramento region, including Black/African American, American Indian/Alaska Native, Asian/Pacific Islander, Hispanic/Latino, and other underserved and excluded. SACOG is committed to achieving equitable life outcomes, and



1415 L Street,
Suite 300
Sacramento, CA
95814
916.321.9000
sacog.org

WORKING DRAFT

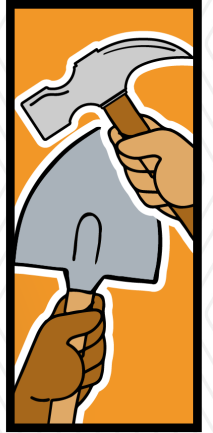
RACIAL EQUITY ACTION PLAN



ENGAGE



EMPOWER



IMPLEMENT



METROPOLITAN TRANSPORTATION COMMISSION

MEGA REGION

NORTHERN CALIFORNIA
WORKING GROUP



MTC
I-80 Westbound Cordelia Commercial
Vehicle Enforcement Facility
(Truck Scales)

MTC
Port of Oakland Community Impact
Reduction: Roundhouse Truck EV Charging
Infrastructure and Truck Parking

SACOG
I-5 Managed Lanes –
Sutterville Road to Yolo County Line

SACOG
Yolo I-80 and US 50 Managed Lanes

SACOG
Sacramento to Roseville
Third Main Track - Phase 1

SACOG
Valley Rail Program includes
expansion of both ACE and the
San Joaquins Services

MTC
Valley Link Buildout

MTC
Capitol Corridor: South Bay Connect

SJCOC
Interstate 205 Managed Lanes Project

SJCOC
Central Valley Gateway Project

SJCOC
Passenger Rail Improvements

SJCOC
State Route 99/120 Interchange
Project (Phase 1A & 1B)

San Francisco

Stockton

Sacramento



- EXISTING TRAIL NETWORK
- PLANNED TRAIL NETWORK
- HIGHWAYS

Ready, Set,
TRAILS!

VISION FOR A CONNECTED
 SACRAMENTO REGION



Our Path

FORWARD:

The Prosperity Strategy

A BRIDGE TO ACTION FOR
INCLUSIVE ECONOMIC
RECOVERY & GROWTH

2020



22-155-15-0117

2022 Youth Leadership Academy



Y

L

A



BLUEPRINT