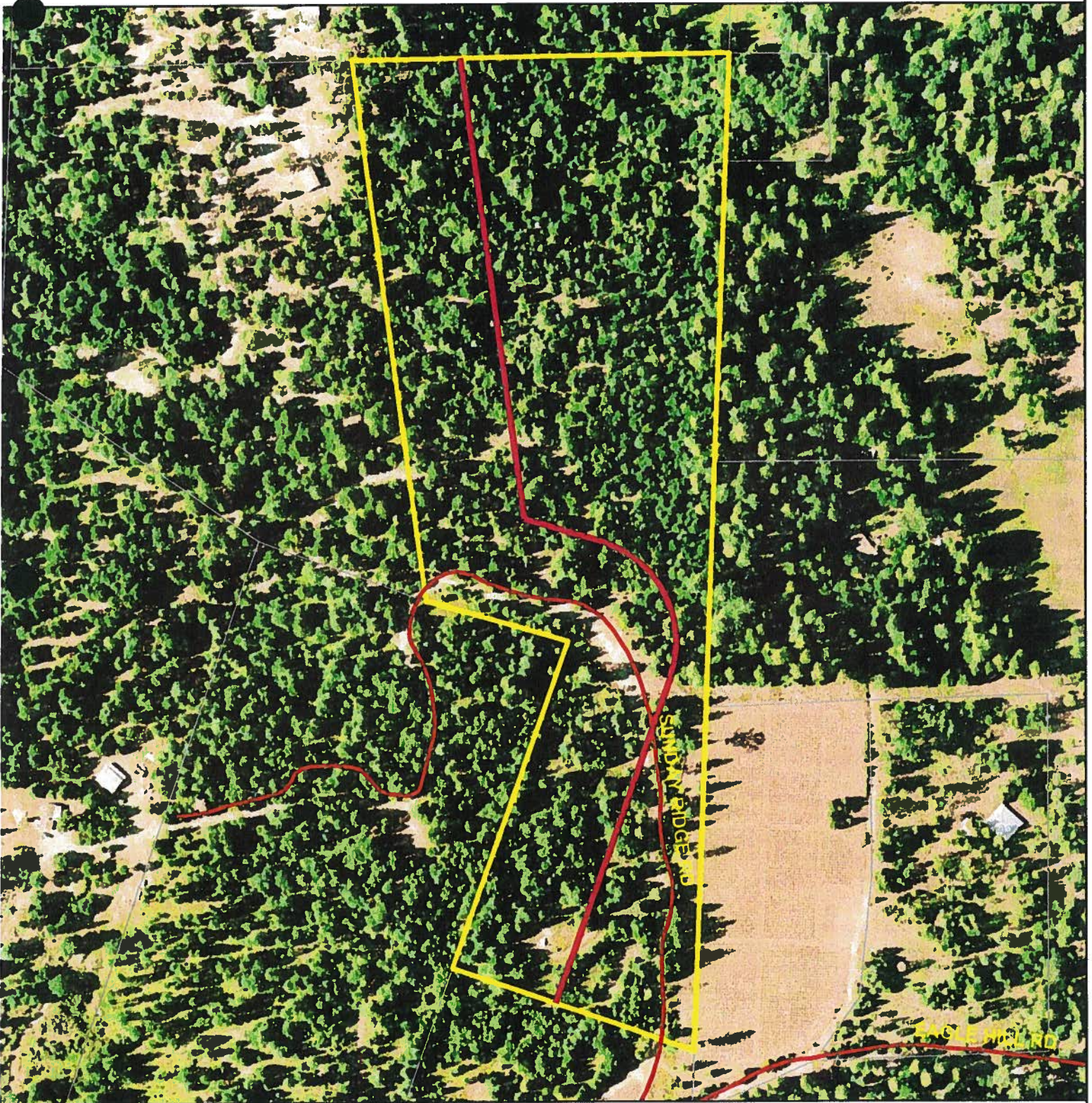


Clayton & Ed Stetson

AirPhoto USA: April 2006



DISCLAIMER

THIS DEPICTION WAS COMPILED FROM UNVERIFIED PUBLIC AND PRIVATE SOURCES AND IS ILLUSTRATIVE ONLY. NO REPRESENTATION IS MADE AS TO THE ACCURACY OF THIS INFORMATION. PARCEL BOUNDARIES ARE PARTICULARLY UNRELIABLE. USERS MAKE USE OF THIS DEPICTION AT THEIR OWN RISK.

MAP PREPARED BY: MARK LA LOGGIA DATE: DECEMBER 29, 2008

PROJECT ID: 4976

EL DORADO COUNTY SURVEYOR'S OFFICE DIVISION
PHONE (951) 621-6511 FAX (951) 626-4731

Copyright 2006 AirPhoto USA, LLC. All Rights Reserved.

Parcels

 Roads

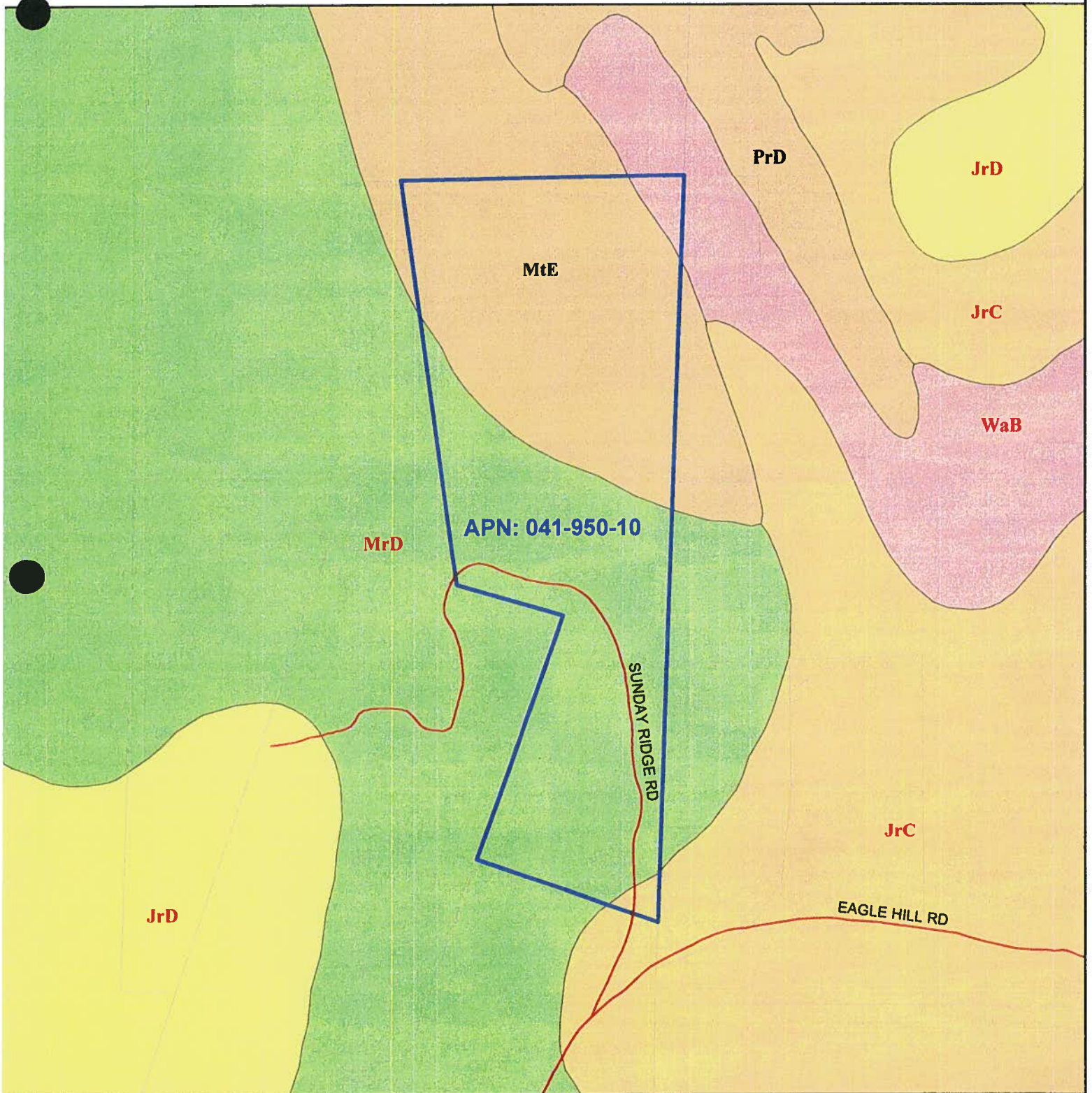
 200' Setback Line



Map Displayed in State Plane Coordinate System (NAD 1983 California Zone 2, feet)



Clayton & Ed Stetson Soils



DISCLAIMER
THIS DEPICTION WAS COMPILED FROM UNVERIFIED PUBLIC AND PRIVATE SOURCES AND IS ILLUSTRATIVE ONLY. NO REPRESENTATION IS MADE AS TO THE ACCURACY OR RELIABILITY OF THIS INFORMATION. PARCEL BOUNDARIES ARE APPROXIMATE. USERS MAKE USE OF THIS DEPICTION AT THEIR OWN RISK.

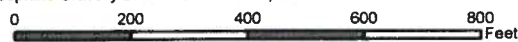
MAP PREPARED BY: MARK LA LOGGIA DATE: DECEMBER 29, 2008
PROJECT ID: 4976

FL. DORADO COUNTY SURVEYOR'S DIVISION
PHONE (351) 621-6511 FAX (351) 626-8731

Choice Soils

- MrD: Musick Sandy Loam 15 To 30 % Slopes
- JrC: Josephine Gravelly Loam 9 To 15 % Slopes

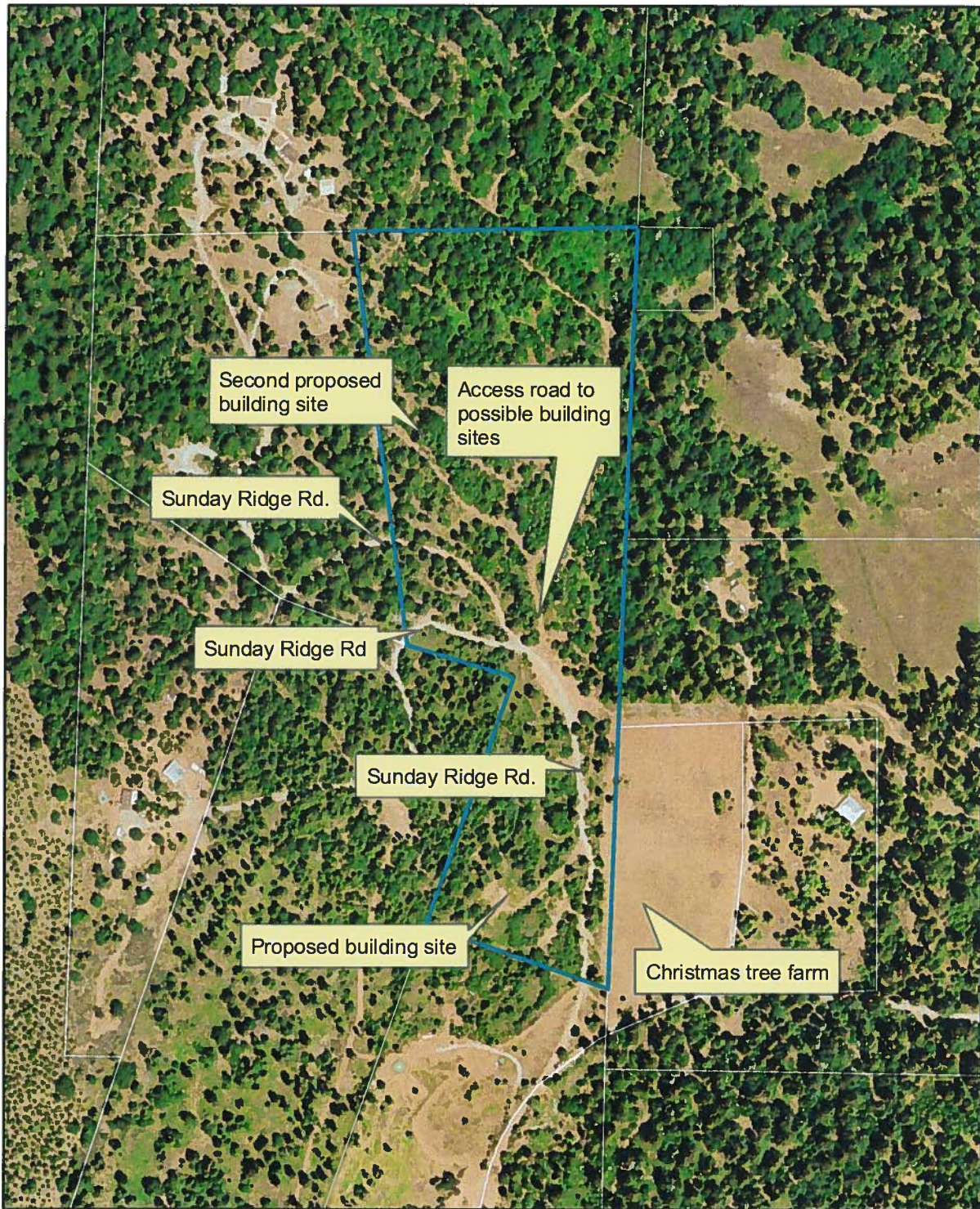
- JrD: Josephine Gravelly Loam 15 To 30 % Slopes
- WaB: Wet Alluvial Land
- Non Choice Soils



Map Displayed in State Plane Coordinate System (NAD 1983 California Zone 2, feet)



APN 041-950-10



Copyright 2003 AirPhoto USA, LLC, All Rights Reserved

DISCLAIMER

THIS DEPICTION WAS COMPILED FROM UNVERIFIED PUBLIC AND PRIVATE SOURCES AND IS ILLUSTRATIVE ONLY. NO REPRESENTATION IS MADE AS TO ACCURACY OF THIS INFORMATION. PARCEL BOUNDARIES ARE PARTICULARLY UNRELIABLE. USERS MAKE USE OF THIS DEPICTION AT THEIR OWN RISK.

MAP PREPARED BY: CHRIS FLORES
DATE: JANUARY 23, 2009.

EL DORADO COUNTY AGRICULTURE DEPARTMENT
PHONE (530) 621-5520 FAX (530) 626-4756

