

RESOLUTION NO. 160-2009

OF THE BOARD OF SUPERVISORS OF THE COUNTY OF EL DORADO

WHEREAS, the County of El Dorado is mandated by the State of California to maintain an adequate and proper General Plan; and

WHEREAS, because of that mandate El Dorado County's General Plan and the various elements thereof must be continually updated with current data, recommendations, and policies; and

WHEREAS, the Development Services/Planning Services Department and the Planning Commission have made recommendations to the Board of Supervisors regarding potential amendments of the Land Use Element of the General Plan; and

WHEREAS, the Board of Supervisors has reviewed and held public hearings on the recommended amendments to the land use element; and

WHEREAS, the Board of Supervisors finds that the proposed amendments to the General Plan are consistent with all elements of the General Plan not otherwise amended.

NOW, THEREFORE, BE IT RESOLVED that the El Dorado County Board of Supervisors hereby approves and accepts the environmental documents on the following amendments to the General Plan, and approves and adopts the following amendments to the General Plan based on the findings and reasons set forth in the staff reports and Planning Commission's actions, except as may be noted herein:

1. PLACERVILLE AREA - Medium Density Residential (MDR) to Commercial (C), consisting of 10 acres, identified by Assessor's Parcel Number 327-150-03 being described as Section 23, Township 10 North, Range 10 East, M.D.M., as shown in Exhibit A; and

This amendment was considered on June 9, 2009, by the Board of Supervisors, and was conceptually approved by the following vote of said Board:

*AYES: James R. Sweeney, John Knight, Raymond Nutting, Ron Briggs
NOES: Norma Santiago*

PASSED AND ADOPTED by the Board of Supervisors of the County of El Dorado at a regular meeting of said Board, held the 21 day of July, 2009, by the following vote of said Board:

Attest:
Suzanne Allen de Sanchez
Clerk of the Board of Supervisors

Ayes: Ron Briggs, John Knight, Ray Nutting,
James R. Sweeney
Noes: Norma Santiago
Absent: none

By: [Signature]
Deputy Clerk

[Signature]
Chairman, Board of Supervisors
Ron Briggs

I CERTIFY THAT:
THE FOREGOING INSTRUMENT IS A CORRECT COPY OF THE ORIGINAL ON FILE IN THIS OFFICE.

DATE: _____

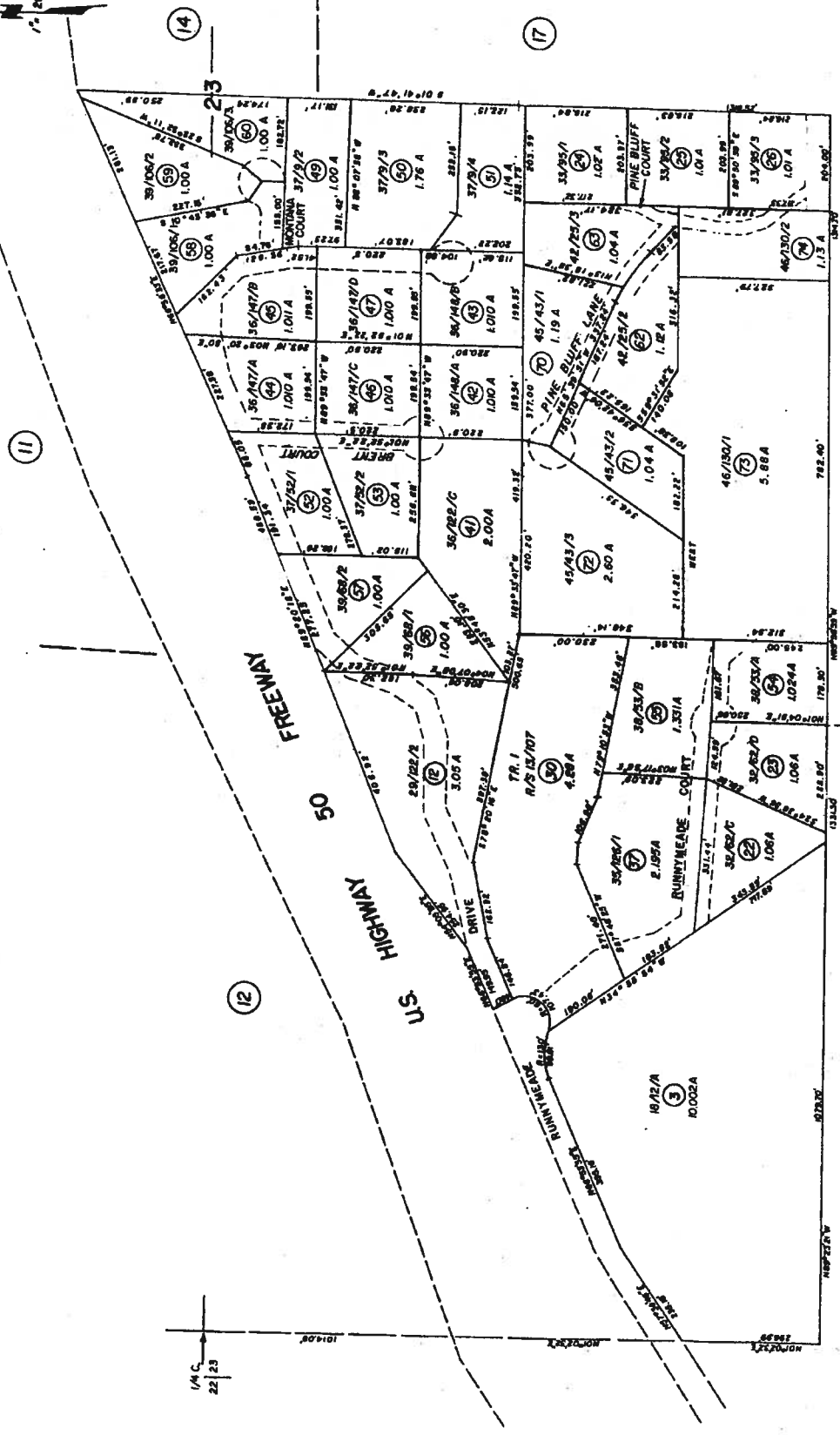
Attest: SUZANNE ALLEN DE SANCHEZ, Clerk of the Board of Supervisors of the County of El Dorado, State of California.

By: _____

POR. W 1/2 SEC. 23, T10N, R10E, MDM.

Tax Area Code

327:15



FOR HIGHWAY VIEW TERRACE SUBDIVISION

BK 329

Assessor's Map Bk. 327 Pg. 15
County of El Dorado, California

NOTE - Assessor's Block Numbers Shown in Ellipses
Assessor's Parcel Numbers Shown in Circles

EXHIBIT A