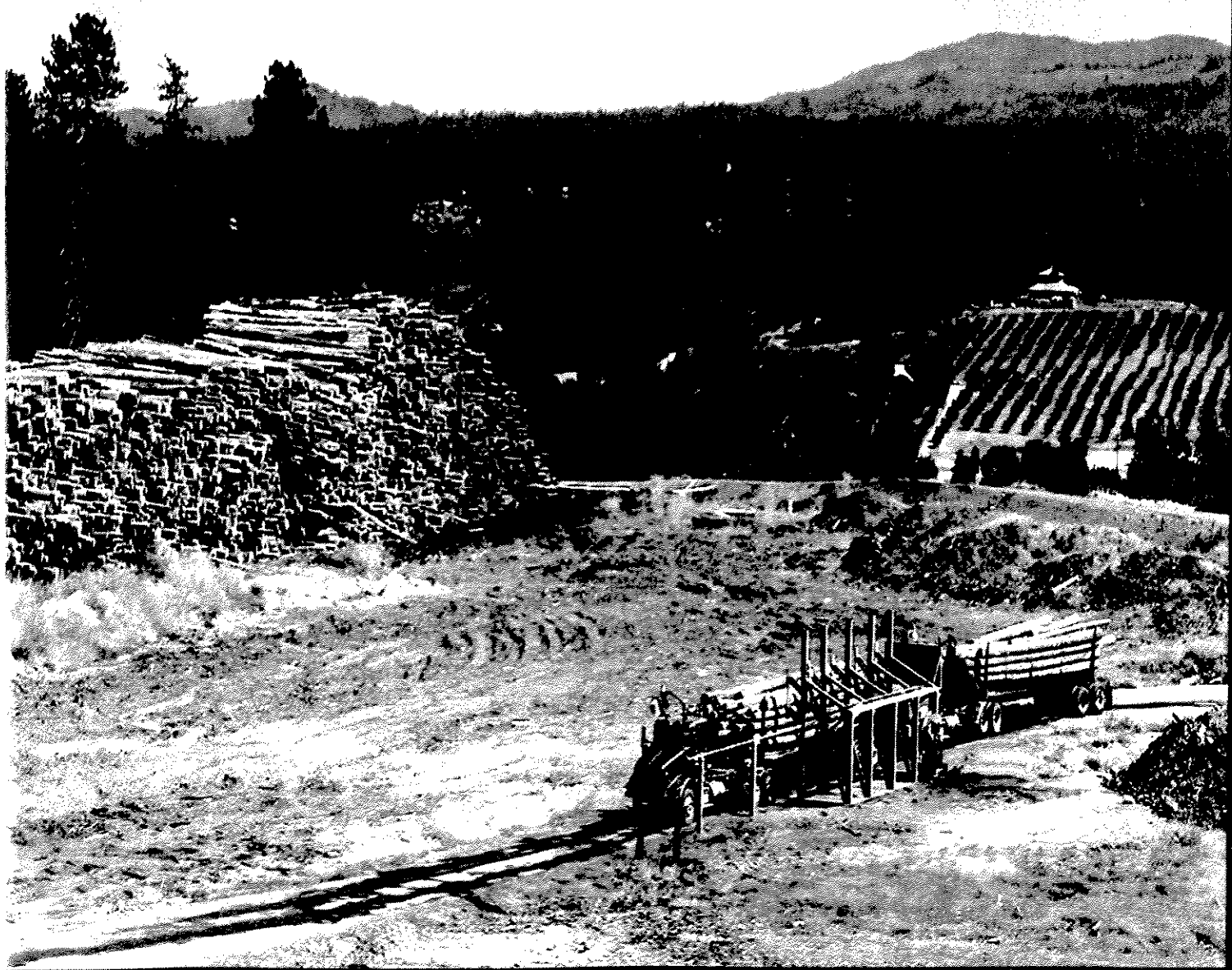




El Dorado ~ Alpine Counties

2007

Agricultural Crop & Livestock Report



# In dedication to Steve Burton 1952 - 2008



The 2007 El Dorado ~ Alpine Counties Crop Report is dedicated to the memory of Assistant Agricultural Commissioner/Sealer Steve Burton, who worked for the El Dorado County Department of Agriculture for 26 years. Beginning his agricultural career as an Agricultural Inspector for Santa Clara County in 1979, Steve joined the El Dorado County Department of Agriculture as a Senior Agricultural Biologist in 1982. In 1997 Steve was promoted to Assistant Agricultural Commissioner/Sealer, where he managed all of the various programs.

Steve took his position as Assistant Agricultural Commissioner/Sealer as an honor and loved being an advocate for the agricultural community. Good natured, Steve never balked at a chance to show his generosity or share his wisdom. One of the duties Steve thoroughly enjoyed was serving as our master barbeque chef at the annual Agriculture Roundtable Dinner and Ag Tour functions.

Steve's sense of humor and quick wit lightened many a day at the office. His untimely passing on February 17, 2008 saddened everyone who had the great pleasure of knowing him. He will be missed.



# The County of El Dorado

## Department of Agriculture Weights & Measures

William J. Stephans, Agricultural Commissioner

Sealer of Weights and Measures

311 Fair Lane  
Placerville, CA 95667

Phone (530) 621-5520  
Fax (530) 626-4756

A.G. Kawamura, Secretary  
California Department of Food and Agriculture

### BOARD OF SUPERVISORS

#### EL DORADO COUNTY

#### ALPINE COUNTY

Rusty Dupray, Chair	District 1	Donald M. Jardine	District 1
Helen Baumann	District 2	Henry "Skip" Veatch	District 2
James R. Sweeney	District 3	Philip D. Bennett, Vice Chair	District 3
Ron Briggs, 1st Vice Chair	District 4	Terry Woodrow, Chair	District 4
Norma Santiago, 2 <sup>nd</sup> Vice Chair	District 5	Gunter E. Kaiser	District 5

In accordance with Section 2279 of the California Food and Agricultural Code, I hereby submit the 2007 El Dorado & Alpine Counties Crop Report.


The El Dorado County gross crop value for 2007 was \$53.2 million which is an overall decrease of 9.5% from the 2006 values. The decline in values was largely due a 40% decrease in timber values. In addition, the 2007 wine grape crop yielded a lower tonnage per acre that resulted in a 12.1% decrease in production when compared to the previous year. However, better reporting from growers, combined with higher stone fruit crop production led to a 43.3% increase in fruits and nuts category, a 157.5% increase in apiary production and a 44.6% increase in nursery values for 2007.

The monetary values in this report are F.O.B. (Freight On Board) and do not reflect net returns or profits realized by the growers. It is estimated that the impact of agriculture on El Dorado County's economy totaled approximately \$440 million in 2007 of which the wine industry contributed an estimated \$187 million while Apple Hill added another \$98 million.

The Alpine County gross crop value for 2007 was \$4.7 million; this is a slight decrease from the 2006 value.

I wish to express my appreciation to the many individuals and organizations that contributed information to make this report possible.

Respectfully Submitted,

  
WILLIAM J. STEPHANS  
Agricultural Commissioner  
Sealer of Weights and Measures

*El Dorado & Alpine Counties*

# 2007 Crop Report

## TABLE OF CONTENTS



### DEPARTMENTAL STAFF

**WILLIAM J. STEPHANS**  
*Agricultural Commissioner*  
*Sealer of Weights and Measures*

**STEVEN G. BURTON**  
*Assistant Agricultural Commissioner*  
*Sealer of Weights and Measures*  
1997-2008

### Agricultural Biologist Standards Inspectors

DAVID BAFUS  
CHARLENE CARVETH  
CHRIS FLORES  
JESSE HONEYCUTT  
HEATHER MELESKI  
LEE ANNE MILA  
GRETA SHUTLER

### Administrative Staff

NANCY APPLGARTH  
DEANNA TOMPKINS  
MYRNA TOW

### EL DORADO COUNTY

	Page
Fruit and Nut Crops .....	1
Livestock.....	3
Apiary Products .....	3
Hay and Pasture .....	3
Nursery Products.....	4
Christmas Trees .....	4
Timber Harvested & By-Products ..	4
Organic Farms Acreage Graph .....	5
Total Values for All Categories .....	5
Pest Management & Eradication ....	6
Sustainable Agriculture Report..	7&8
Then and Now Comparisons.....	8

### ALPINE COUNTY

Livestock.....	6
Hay and Pasture .....	6
Pest Management & Eradication ....	6
Sustainable Agriculture Report..	7&8

*El Dorado County*

*Fruit and Nut Crops*

Crop	Year	Acreage	Production Per Acre	Total Production	Unit	Value per Unit	Total Value
<b>PEARS</b>							
Bartlet/Bosc	2007			305	Tons	\$ 1,600	\$ 488,000
	2006			296	Tons	\$ 786	\$ 232,656
Cannery	2007			89	Tons	\$ 62	\$ 5,518
	2006			87	Tons	\$ 74	\$ 6,438
<b>Total Bart/Bosc</b>	2007	84	4.69	394	Tons	\$ 1,253	\$ 493,518
	2006	84	4.56	383	Tons	\$ 624	\$ 239,094
Asian	2007	41	6.34	260	Tons	\$ 2,000	\$ 520,000
	2006	41	6.20	254	Tons	\$ 937	\$ 237,998
<b>TOTAL PEARS</b>	2007	125					\$ 1,013,518
	2006	125					\$ 477,092

Crop	Year	Acreage	Production Per Acre	Total Production	Unit	Value per Unit	Total Value
<b>APPLES</b>							
Fresh	2007			5,378	Tons	\$ 1,336	\$ 7,185,008
	2006			5,200	Tons	\$ 646	\$ 3,359,200
Cannery/Apple Hill Products*	2007			3,072	Tons		\$ 583,680
	2006			2,921	Tons		\$ 555,487
Juice/Cider	2007			55,627	Gallons		\$ 383,826
	2006			53,254	Gallons		\$ 367,453
<b>TOTAL APPLES</b>	2007	845					\$ 8,152,514
	2006	847					\$ 4,282,140

\* Includes all "Enhanced Agricultural Products" such as fruit/nut pies and jams

*El Dorado County*

*Fruit and Nut Crops (continued)*

Crop	Year	Acreage	Production Per Acre	Total Production	Unit	Ave. Value per Unit	Total Value
Bearing	2007	1747	2.88	5,029	Tons	\$ 1,228	\$ 6,021,458
	2006	1864	3.07	5,720	Tons	\$ 1,262	\$ 6,186,521
Non-Bearing	2007	353	Total Acreage = 2099				
	2006	194					

Crop	Year	Acreage	Production Per Acre	Total Production	Unit	Value per Unit	Total Value
Cherries	2007	51	0.78	40	Tons	\$ 4,800	\$ 192,000
	2006	88	0.10	9	Tons	\$ 3,885	\$ 34,965
Peaches	2007	105	3.28	344	Tons	\$ 2,640	\$ 908,160
	2006	105	1.92	202	Tons	\$ 2,451	\$ 495,102
Plums	2007	52	2.96	154	Tons	\$ 1,960	\$ 301,840
	2006	52	0.60	31	Tons	\$ 1,698	\$ 52,638
Walnuts	2007	158	0.50	79	Tons	\$ 1,580	\$ 124,820
	2006	219	0.35	76	Tons	\$ 1,600	\$ 121,600

Totals	Year	Total Acreage	Total Value
FRUIT & NUT CROPS	2007	3436	\$ 16,714,310
	2006	3494	\$ 11,650,058
MINOR & MISC. CROPS*	2007		\$ 566,817
	2006		\$ 230,505

\*Minor and Miscellaneous includes: Truck Gardens, Berries, Nectarines, Citrus, Chestnuts, Avocados, Olives, Pumpkins, Tomatoes and Persimmons

# El Dorado County

## Livestock

Crop	Year	Number of Head	Total Live Weight	Unit	Average Unit Value	Total Value
Cattle and Calves	2007	7025	72,896	cwt.**	\$ 90.28	\$ 6,581,051
	2006	7048	75,425	cwt.	\$ 89.40	\$ 6,742,995
Goats and Kids	2007	2500		per head	\$ 214.12	\$ 535,300
	2006	2696		per head	\$ 219.69	\$ 592,284
Misc.*	2007					\$ 1,568,463
	2006					\$ 1,165,412
TOTAL LIVESTOCK	2007					\$ 8,684,814
	2006					\$ 8,500,691

\*Misc. Includes: Turkeys, Ducks, Geese, Chickens, Hatching Eggs, Llamas, Alpacas, Hogs/Pigs, Sheep, Emu, Ostrich and Wool/By-products

\*\*cwt. = hundredweight = 100 pounds

## Apiary Products

	Year	Units	Total Value
Apiary Products	2007	4000 colonies	\$ 600,000
	2006	2000 colonies	\$ 233,056

Includes: Honey, Bees Wax, Pollen and Pollination

## Hay and Pasture

Crop	Year	Acres	Units	Value Per Unit	Total Value
Hay, Tame	2007	216	367 Tons	\$ 121.00	\$ 44,407
	2006	268	455 Tons	\$ 117.00	\$ 53,235
Irrigated Pasture	2007	927	Acres	\$ 128.00	\$ 118,656
	2006	927	Acres	\$ 128.00	\$ 118,656
Rangeland (Dryland)	2007	233,000	Acres	\$ 13.00	\$ 3,029,000
	2006	286,000	Acres	\$ 13.00	\$ 3,718,000
TOTAL HAY AND PASTURE	2007				\$ 3,192,063
	2006				\$ 3,889,891

*El Dorado County*

*Nursery Products*

<b>Crop</b>	<b>Year</b>	<b>Acreage</b>	<b>Value</b>
<b>TOTAL NURSERY</b>	2007	40	\$ 2,168,978
	2006	22	\$ 1,504,482

*Christmas Trees*

	<b>Year</b>	<b>Production</b>	<b>Unit</b>	<b>Unit</b>	<b>Value</b>
<b>Wholesale</b>	2007	8,454	Each	\$ 25.34	\$ 214,224
	2006	10,568	Each	\$ 25.37	\$ 268,110
<b>Choose and Cut</b>	2007	54,976	Each	\$ 45.50	\$ 2,501,408
	2006	68,720	Each	\$ 44.38	\$ 3,049,794
<b>TOTAL CHRISTMAS TREES</b>	2007				\$ 2,715,632
	2006				\$ 3,317,904

*Timber Harvested and By-Products*

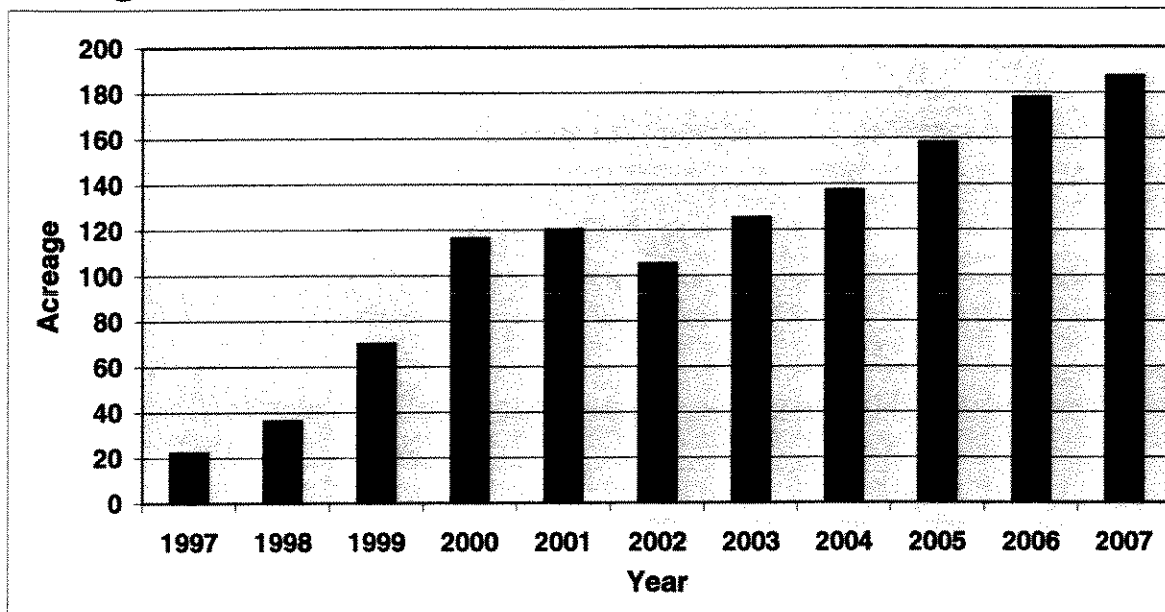
	<b>Year</b>	<b>Production</b>	<b>Unit</b>	<b>Value</b>
<b>Private and Public Forest</b>	2007	91,055	MBF	\$ 18,521,478
	2006	211,706	MBF	\$ 29,418,831
<b>Wood Sales and Permits</b>	2007	2,517	MBF	\$ 38,436
	2006*	76,270	MBF	\$ 24,572
<b>TOTAL TIMBER</b>	2007	93,572		\$ 18,559,914
	2006	287,976		\$ 29,443,403

\*Inconsistent data received from source



# El Dorado County

## Organic Farm Acreage In El Dorado County



## Total Values For All Categories

Crop	Year	Value
Fruit and Nut	2007	\$ 16,714,310
	2006	\$ 11,650,058
Minor and Misc. Crops	2007	\$ 566,817
	2006	\$ 230,505
Apiary Products	2007	\$ 600,000
	2006	\$ 233,056
Livestock	2007	\$ 8,684,814
	2006	\$ 8,500,691
Hay and Pasture	2007	\$ 3,192,063
	2006	\$ 3,889,891
Nursery Products	2007	\$ 2,168,978
	2006	\$ 1,504,482
Christmas Trees	2007	\$ 2,715,632
	2006	\$ 3,317,904
Timber	2007	\$ 18,559,914
	2006	\$ 29,443,403
GRAND TOTAL	2007	\$ 53,202,528
	2006	\$ 58,769,990

## Alpine County

### Livestock

Crop	Year	Number of Head	Total Live Weight	Unit	Value per Unit	Total Value
Cattle and Calves	2007	2079	31,564	cwt.**	\$ 90.28	\$ 2,849,598
Cattle and Calves	2006	2140	33,702	cwt.	\$ 89.40	\$ 3,012,959

\*\*cwt. = hundredweight = 100 pounds

### Hay and Pasture

Crop	Year	Acres	Units	Value Per Unit	Total Value
Hay, Tame	2007	8	16 Tons	\$ 121.00	\$ 1,936
	2006	8	16 Tons	\$ 116.00	\$ 1,856
Irrigated Pasture	2007	1,143	Acres	\$ 125.00	\$ 142,875
	2006	1,143	Acres	\$ 125.00	\$ 142,875
Rangeland (Dryland)	2007	133,000	Acres	\$ 13.00	\$ 1,729,000
	2006	133,000	Acres	\$ 13.00	\$ 1,729,000
Timber	2007		0 MBF	\$ -	\$ -
	2006		51	\$ 54.51	\$ 2,780
TOTAL HAY AND PASTURE	2007				\$ 1,873,811
	2006				\$ 1,873,731

## El Dorado & Alpine Counties

### Pest Management and Eradication

Pest	Agent/Mechanism	Scope of Program
Yellow Starthistle ( <i>Centaurea solstitialis</i> )	Mechanical/Chemical/Biocontrol	Management
Klamath Weed ( <i>Hypericum perforatum</i> )	Biocontrol	Management
Spotted Knapweed ( <i>Centaurea maculosa</i> )	Chemical/Mechanical	Eradication
Dalmation Toadflax ( <i>Linaria genistifolia</i> ssp. <i>dalmatica</i> )	Chemical	Eradication
Tall Whitetop ( <i>Lepidium latifolium</i> )	Chemical	Eradication
Oblong Spurge ( <i>Euphorbia oblongata</i> )	Chemical	Eradication
Canada Thistle ( <i>Cirsium arvense</i> )	Chemical	Eradication
Purple Loosestrife ( <i>Lythrum salicaria</i> )	Chemical	Eradication
Russian Knapweed ( <i>Acroptilon repens</i> )	Chemical	Eradication
Vine Mealybug ( <i>Planococcus ficus</i> )	Biocontrol/Chemical	Eradication
Striped Mealybug ( <i>Ferrisia gilli</i> )	Chemical	Eradication

# *Sustainable Agriculture Reporting for El Dorado and Alpine Counties*

## **Pest Exclusion**

*Prevents the introduction of detrimental pests that are not of common occurrence in California. Over **1224 inspections at 359 locations** were made during 2007.*

## **Pest Detection**

*Monitoring program to detect pests that may have entered El Dorado County despite pest exclusion efforts. Over **900 traps** were placed in 2007 in both rural and urban areas to detect various pests.*

## **Pest Eradication**

*Includes chemical and mechanical treatments. Vine Mealybug infected vineyards and a Striped Mealybug infestation were treated by the growers in cooperation with this Department during the 2007 growing season.*

## **Pest Management**

*El Dorado County Noxious Weed Management Group: Coordinates invasive weed control, education and eradication among federal, state, county and private agencies within the Lake Tahoe Basin.*

*Glassy-winged Sharpshooter (GWSS) Pest Management Program: Includes inspections of all nursery stock shipped into the county from known GWSS infested areas. Over **400 insect traps** have been deployed and monitored throughout the county.*

*Biological Control Program: Releases insects and other organisms that act as natural enemies against noxious pests. Biocontrol projects include: Leaf beetle (*Chrysolina quadrigemina*) to **control Klamath Weed**. Seed weevil (*Eustenopus villosus*), the Peacock fly (*Chaetorellia australis*), the bud weevil (*Bangasternus orientalis*), the gall fly (*Urophora sirunaseva*), the flower weevil (*Larinus curtus*), the hairy weevil (*Eustenopus villosus*), and the rust fungus (*Puccinia jaceae* var. *solstitialis*) to **reduce the spread of Yellow Starthistle**. A parasitic wasp (*Encarsia partneopea*) is being utilized in the **control of Ash Whiteflies**. The El Dorado County Department of Agriculture monitors and relocates the organisms in cooperation with the California Department of Food and Agriculture.*

*Vertebrate Pest Management Program: Assists growers and homeowners in the control of deprecating vertebrate pests (i.e., mice, rats, etc.).*

*Wildlife Management Program: Provides management of wildlife that are deprecating livestock, property and/or presenting a hazard to public health and safety.*

## **Pesticide Monitoring**

*Monitoring program to protect public health, the environment and agricultural workers. This program is conducted in cooperation with the California Department of Pesticide Regulation.*

## Commodity Evaluation and Marketing Programs

Certified Farmer's Market Program: *Allows farmers to market directly to consumers at area Certified Farmer's Markets. Grower inspections are conducted by the Department to validate the registration. There were **55 growers** registered as certified growers with production areas within the county.*

Organic Program: *Includes registration by growers in order to market farm products as organically grown. Grower inspections are conducted by the Department to validate the registration. In 2007, **20 growers** were registered as organic, representing **187 acres** under production.*

Standardization Program: *Protects consumers and the fresh fruit, nut and vegetable industry from distribution of substandard products. Standardization laws establish minimum specifications for maturity, quality and size of commodities (i.e., apples, pears) plus standard container pack and labeling. Quality Control inspections are also conducted on nursery stock, eggs and seeds.*



## *About The Cover:*

# **Sierra Pacific Industries**

Sierra Pacific Industries, a family owned business since 1949, owns and manages approximately 1.8 million acres of forestland in California. To Sierra Pacific Industries (SPI), sustainable forest management means more than planting trees.

Today's industry is concerned about all aspects of forest health, including wildlife habitat, native plant species and water quality. Harvesting trees and producing wood products for the consumer today is much different than it was fifty or a hundred years ago. Technology has dramatically improved, and with it, the ability to monitor forest conditions and lessen the overall impact on the environment.

SPI employs modern forest management practices that closely mimic natural forest events. SPI has invested in state-of-the-art equipment to optimize every fiber of every tree and they are a voluntary partner in the Sustainable Forestry Initiative to help ensure forests are here for generations to come. The expertise of SPI's registered professional foresters and natural resource specialists guarantees that wildlife habitats, water quality and other forest values are protected.

El Dorado/Alpine County  
Agricultural Commissioner/Sealer  
311 Fair Lane  
Placerville, CA 95667

