

Agriculture/Weights & Measures Department

2/25/2020

2020/2021 Budget

Mission

- To protect, enhance and promote the preservation of agriculture and the environment while sustaining the public health, safety and welfare of all citizens, and to provide consumer and marketplace protections through the fair and equitable enforcement of laws and regulations

Ag Department Programs

Pest Exclusion

Pest Detection

Pest Management

Noxious Weeds

Nursery

Seeds

Phytosanitary Certs

Farmers Markets

Organics

Honey

Fruit, Nut and

Vegetable Quality

Eggs

Pesticide Enforcement

Crop Statistics

Apiary

Ag Department Programs cont.

Device Inspections

Pricing Accuracy

Quantity Control

Weighmaster Audits

Petroleum

Complaint Investigations

HazMat Inspections on Farms

Outreach

Ag Commission

Cannabis

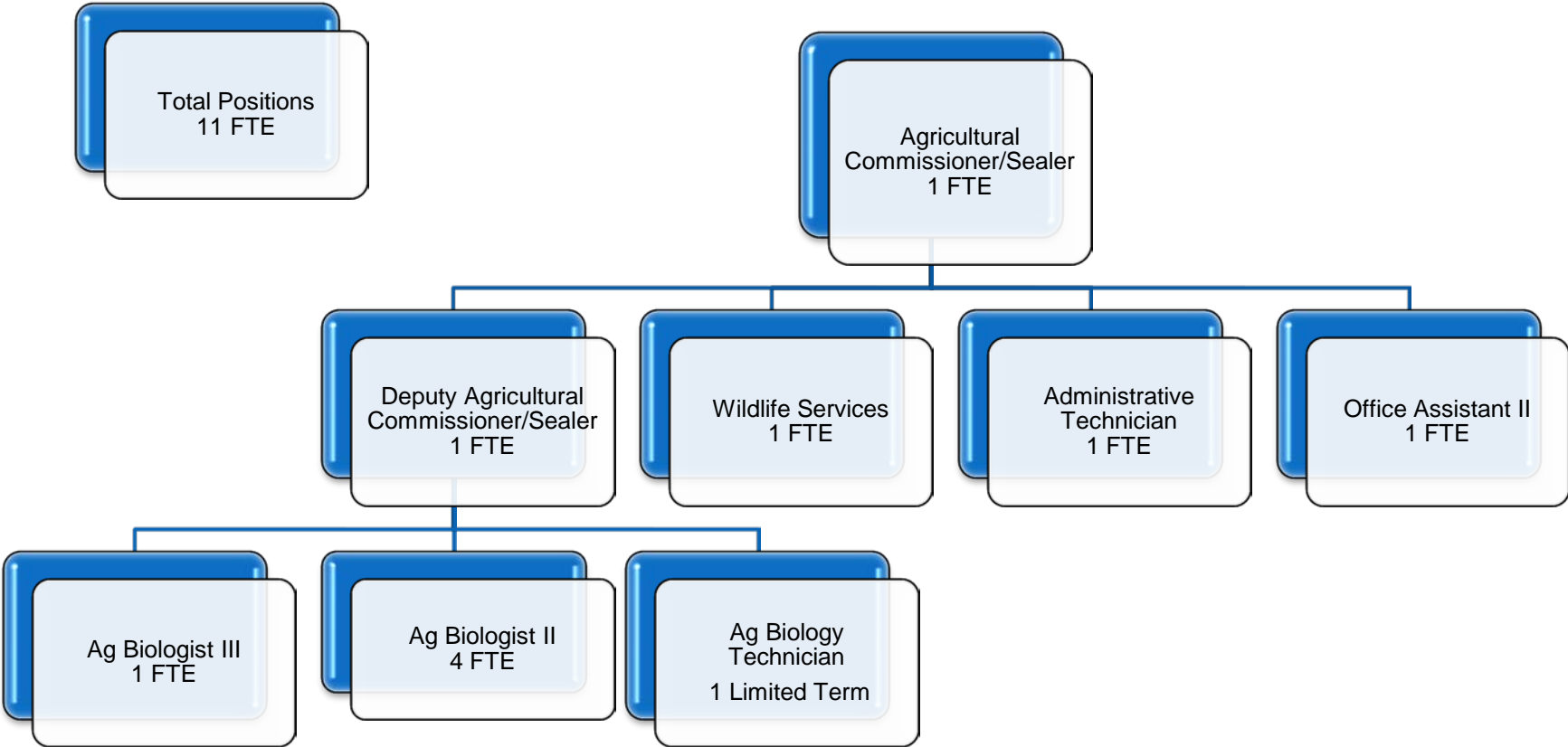
Ag Grading

Wildlife Services

Crop Verification

Industrial Hemp

Organizational Chart



Main Sources of Revenue

- State & Federal funds to administer programs
- Unclaimed Gas Tax
- General Fund
- Pesticide Mill
- Funds from licenses/permits

Unclaimed Gas Tax

- A number of years ago Cal Trans, with the Air Resources Board, developed a formula to estimate the amount of taxed gasoline used by Agriculture and Landscapers.
- Taxes that are not claimed for refunds are distributed to the CA Department of Food and Agriculture to be used by the department and Counties for the administration of Agricultural programs.

Maintenance of Effort

- Food and Agricultural Code 224.5
- In order to be eligible for the distribution of the Unclaimed Gas Tax funds the County must maintain county general fund support for agricultural commissioner services at least equal to the average amount expended for the five preceding fiscal years

Current Year Budget

- **Department budget of \$1.5 million**

- **Net County Cost of \$557,868**

The Department will meet the Maintenance of Effort five year average to be eligible for the FY 19/20 distribution of Unclaimed Gas Tax funds.

Upcoming Challenges

- Unknown workloads associated with Commercial Cannabis cultivation permits
- Unknown workloads associated with Industrial Hemp cultivation
- Disruptions from Public Safety Power Shut Off Events

Working with facilities on the proposed purchase of a generator for the department building with the additional unclaimed gas tax funds.