

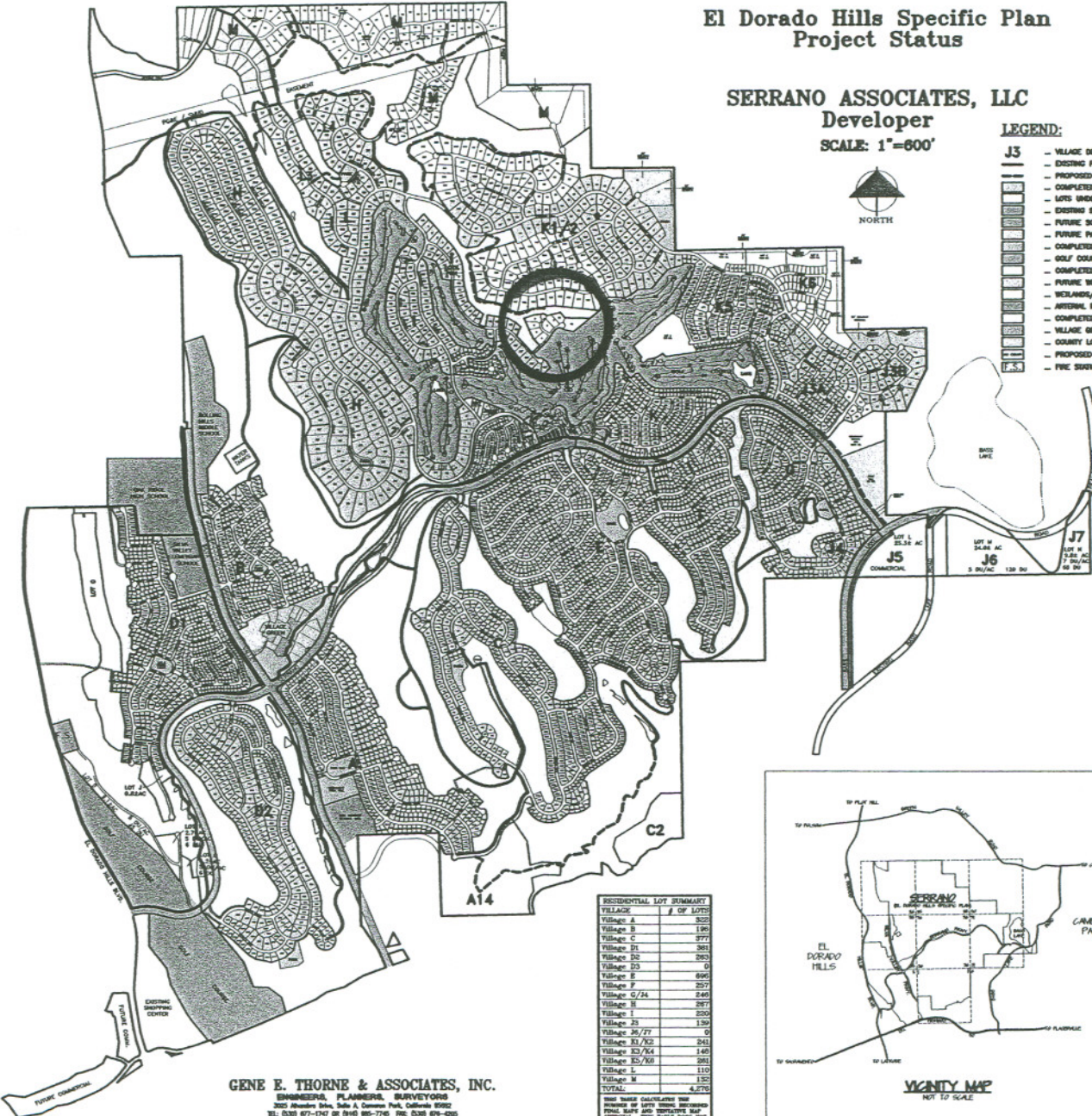
THIS MAP IS INTENDED AS A GENERAL DESCRIPTION OF LAND USE AND LOT LOCATIONS. FURTHER SUBDIVISION, RE-SUBDIVISION OR LOT LINE ADJUSTMENTS MAY AFFECT LOT SIZES AND OTHER CONFIGURATIONS SHOWN.

**Exhibit Map**  
**-SERRANO-**  
 El Dorado County, California  
 El Dorado Hills Specific Plan  
 Project Status

**SERRANO ASSOCIATES, LLC**  
 Developer  
 SCALE: 1"=600'

**LEGEND:**

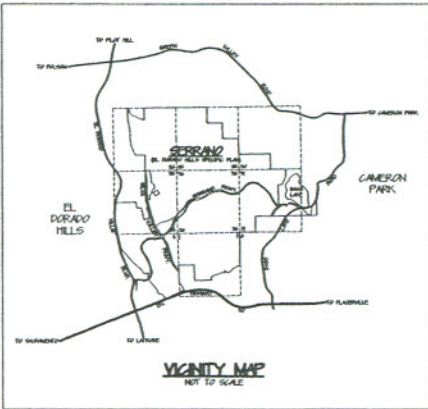
- J3 - VILLAGE DESIGNATION
- EXISTING PAVIN
- PROPOSED PAVIN
- COMPLETED LOTS
- LOTS UNDER CONSTRUCTION
- EXISTING SCHOOL/FIRE STATION
- FUTURE SCHOOL SITES
- FUTURE PARKS
- COMPLETED PARKS
- GOLF COURSE/VILLAGE GREEN
- COMPLETED OPEN SPACE
- FUTURE WETLANDS
- WETLANDS/PONDS
- ARTERIAL ROADS
- COMPLETED VILLAGE ROADS
- VILLAGE GREEN DEVELOPED PARCEL
- COUNTY LOT
- PROPOSED DEVELOPMENT AREA
- FIRE STATION SITE



VILLAGE	# OF LOTS
Village A	322
Village B	196
Village C	277
Village D1	381
Village D2	263
Village D3	0
Village E	695
Village F	257
Village G/H	249
Village H	287
Village I	230
Village J1	139
Village J2/J3	0
Village K1/K2	241
Village K3/K4	149
Village K5/K6	281
Village L	119
Village M	132
<b>TOTAL</b>	<b>4,276</b>

THESE FIGURES CALCULATE THE NUMBER OF LOTS BEING DEVELOPED PER VILLAGE AND TOTALS MAY DIFFER FROM THE TOTAL NUMBER OF LOTS SHOWN ON THIS MAP DUE TO ROUNDING AND OTHER FACTORS.

**GENE E. THORNE & ASSOCIATES, INC.**  
 ENGINEERS, PLANNERS, SURVEYORS  
 3025 Alameda Drive, Suite A, Camanche Park, California 95022  
 TEL: (925) 871-1747 OR (916) 885-1749 FAX: (925) 879-4262



**Vicinity Map**

**Serrano Village K1 & K2, Unit No. 6**