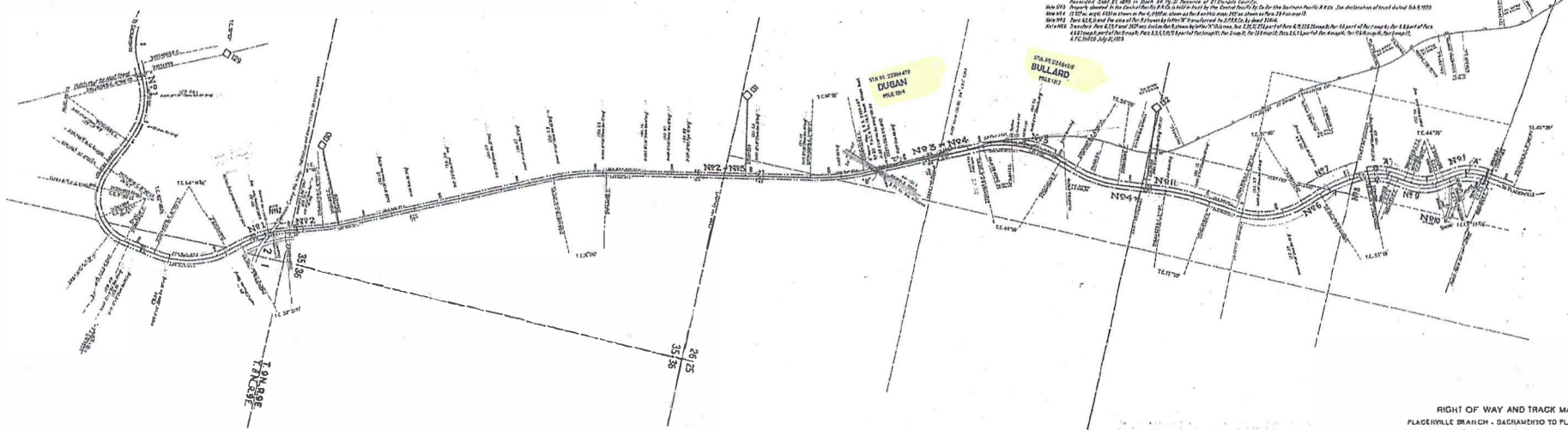




SCHEDULE OF PROPERTY									
No.	Owner	Grantee	Series	Date	Volume	Page	Remarks		
1	...	...	...	...	...	...	...		
2	...	...	...	...	...	...	...		
3	...	...	...	...	...	...	...		
4	...	...	...	...	...	...	...		
5	...	...	...	...	...	...	...		
6	...	...	...	...	...	...	...		
7	...	...	...	...	...	...	...		
8	...	...	...	...	...	...	...		
9	...	...	...	...	...	...	...		
10	...	...	...	...	...	...	...		
11	...	...	...	...	...	...	...		
12	...	...	...	...	...	...	...		
13	...	...	...	...	...	...	...		
14	...	...	...	...	...	...	...		
15	...	...	...	...	...	...	...		
16	...	...	...	...	...	...	...		
17	...	...	...	...	...	...	...		
18	...	...	...	...	...	...	...		
19	...	...	...	...	...	...	...		
20	...	...	...	...	...	...	...		

Notes: This map was prepared by the Southern Pacific Railroad Company...  
 Note 1: The right of way and track map...  
 Note 2: The right of way and track map...  
 Note 3: The right of way and track map...  
 Note 4: The right of way and track map...  
 Note 5: The right of way and track map...  
 Note 6: The right of way and track map...  
 Note 7: The right of way and track map...  
 Note 8: The right of way and track map...  
 Note 9: The right of way and track map...  
 Note 10: The right of way and track map...



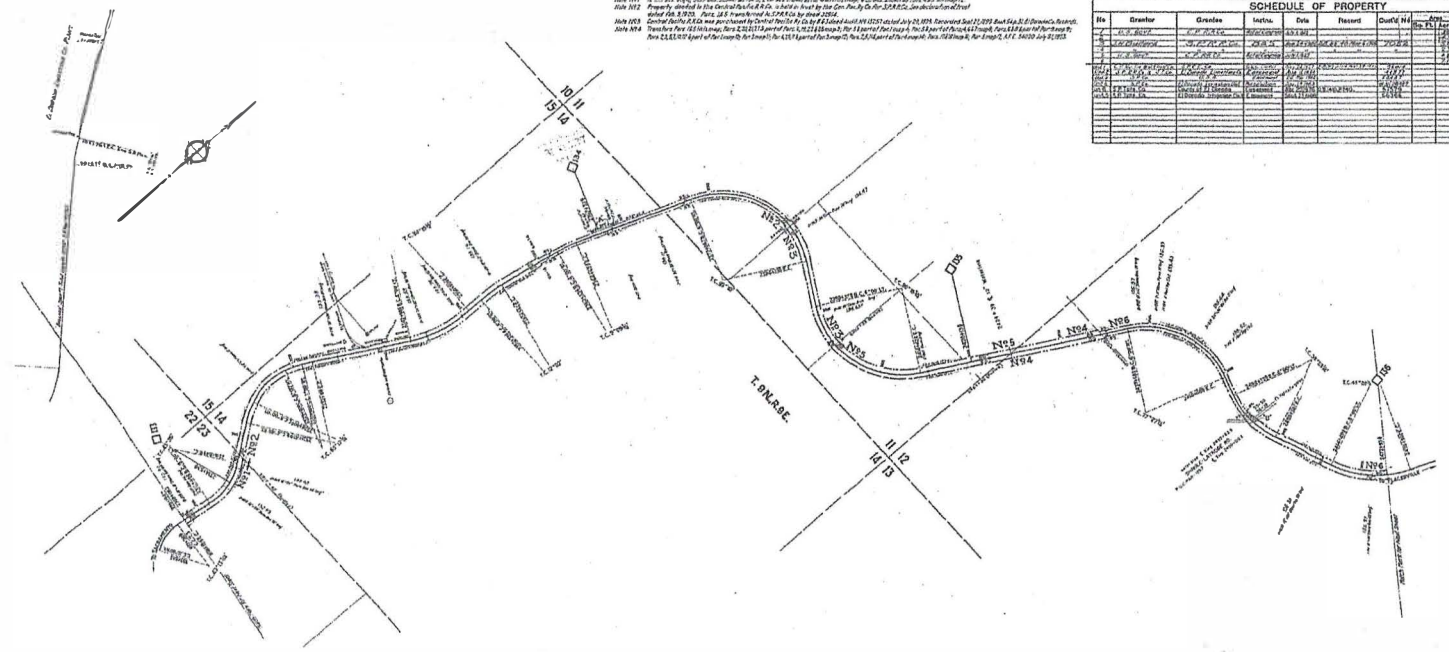
RIGHT OF WAY AND TRACK MAP  
 PLACERVILLE BRANCH - SACRAMENTO TO PLACERVILLE  
 SOUTHERN PACIFIC COMPANY  
 SHEET 11  
 SOUTHERN PACIFIC COMPANY  
 SACRAMENTO DIVISION, SACRAMENTO, CALIFORNIA  
 FROM STATE PLANS 2103-751 TO 2105-024  
 (Scale: 1 inch = 400 feet)

60535  
12

SCALE 1" = 400'  
 V-70  
12  
12

Note 101: 60,000 sq. ft. 1274 was shown as No. 1, 2297 was shown as No. 4 and 1275 was shown as No. 455 on map 12.  
 Note 102: Property, shown in the District No. 4 & 5, is shown as No. 1, 2297 by the Com. Plan. Co. No. 1228 & Co. No. 1229.  
 Note 103: 60,000 sq. ft. 1274 was shown as No. 1, 2297 was shown as No. 4 and 1275 was shown as No. 455 on map 12.  
 Note 104: 60,000 sq. ft. 1274 was shown as No. 1, 2297 was shown as No. 4 and 1275 was shown as No. 455 on map 12.  
 Note 105: 60,000 sq. ft. 1274 was shown as No. 1, 2297 was shown as No. 4 and 1275 was shown as No. 455 on map 12.

SCHEDULE OF PROPERTY									
No.	Owner	Grantee	Section	Date	Assess	Cont'd No.	Area	Remarks	
1									
2									
3									
4									
5									
6									
7									
8									
9									
10									
11									
12									
13									
14									
15									
16									
17									
18									
19									
20									
21									
22									
23									
24									
25									
26									
27									
28									
29									
30									
31									
32									
33									
34									
35									
36									
37									
38									
39									
40									
41									
42									
43									
44									
45									
46									
47									
48									
49									
50									
51									
52									
53									
54									
55									
56									
57									
58									
59									
60									
61									
62									
63									
64									
65									
66									
67									
68									
69									
70									
71									
72									
73									
74									
75									
76									
77									
78									
79									
80									
81									
82									
83									
84									
85									
86									
87									
88									
89									
90									
91									
92									
93									
94									
95									
96									
97									
98									
99									
100									

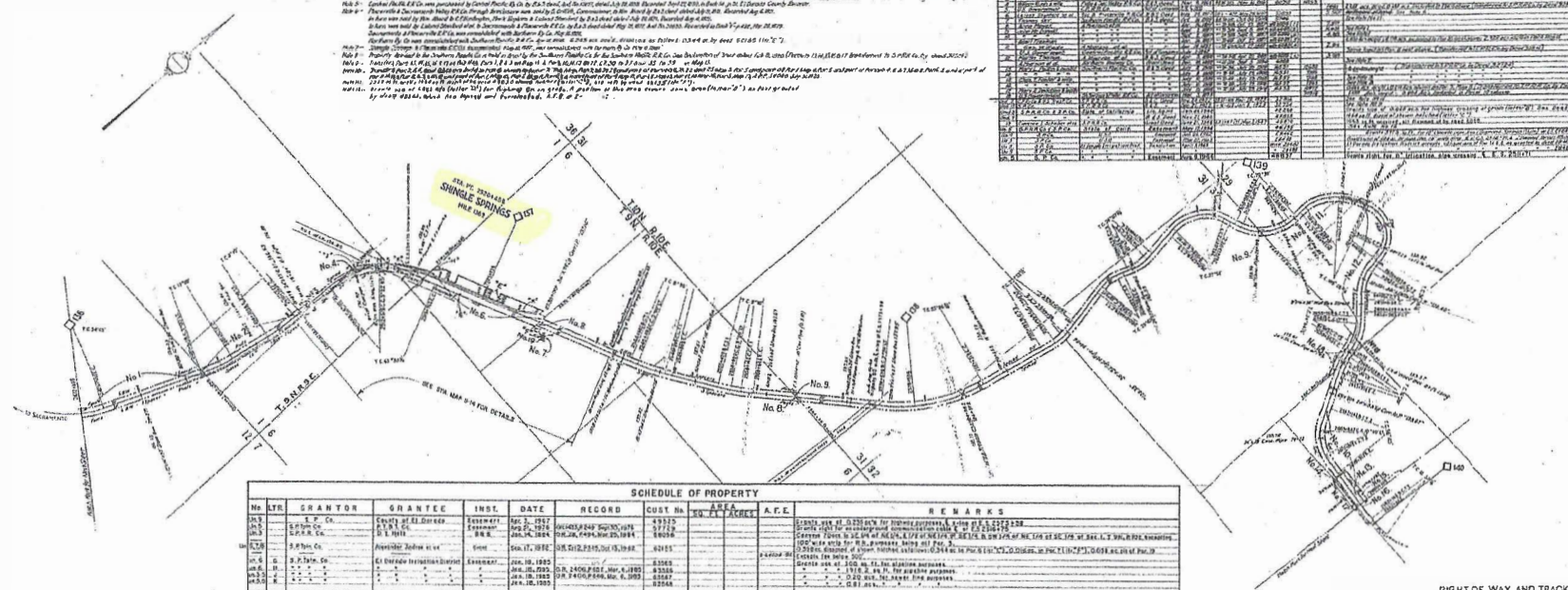


60536  
13

W. H. Sibley  
 SEP 1908  
 RIGHT OF WAY AND TRACK MAP  
 PLACERVILLE BRANCH, SACRAMENTO TO PLACERVILLE  
 SOUTHERN PACIFIC COMPANY  
 DESIGNED BY  
 SOUTHERN PACIFIC COMPANY  
 SACRAMENTO OFFICE, 41 BRIDGE STREET, CALIFORNIA  
 FROM PLACERVILLE TO SACRAMENTO 2472-5214  
 Scale 1 inch = 500 feet  
 VALUATION DEPARTMENT  
 SAN FRANCISCO CALIFORNIA

SCHEDULE OF PROPERTY								
No.	Grantor	Grantee	Inst.	Date	Record	Cost	Area	Remarks
1	...	...	...	...	...	...	...	...
2	...	...	...	...	...	...	...	...
3	...	...	...	...	...	...	...	...
4	...	...	...	...	...	...	...	...
5	...	...	...	...	...	...	...	...
6	...	...	...	...	...	...	...	...
7	...	...	...	...	...	...	...	...
8	...	...	...	...	...	...	...	...
9	...	...	...	...	...	...	...	...
10	...	...	...	...	...	...	...	...
11	...	...	...	...	...	...	...	...
12	...	...	...	...	...	...	...	...
13	...	...	...	...	...	...	...	...
14	...	...	...	...	...	...	...	...
15	...	...	...	...	...	...	...	...
16	...	...	...	...	...	...	...	...
17	...	...	...	...	...	...	...	...
18	...	...	...	...	...	...	...	...
19	...	...	...	...	...	...	...	...
20	...	...	...	...	...	...	...	...

Notes - 1. This map is a plan of the right-of-way for the proposed line of the Southern Pacific Company, from the intersection of the line of the Sacramento River to the intersection of the line of the Feather River, and is subject to the provisions of the Act of Congress of March 3, 1875, and the Act of Congress of July 1, 1892, and the Act of Congress of August 1, 1906, and the Act of Congress of August 1, 1908, and the Act of Congress of August 1, 1910, and the Act of Congress of August 1, 1912, and the Act of Congress of August 1, 1914, and the Act of Congress of August 1, 1916, and the Act of Congress of August 1, 1918, and the Act of Congress of August 1, 1920, and the Act of Congress of August 1, 1922, and the Act of Congress of August 1, 1924, and the Act of Congress of August 1, 1926, and the Act of Congress of August 1, 1928, and the Act of Congress of August 1, 1930, and the Act of Congress of August 1, 1932, and the Act of Congress of August 1, 1934, and the Act of Congress of August 1, 1936, and the Act of Congress of August 1, 1938, and the Act of Congress of August 1, 1940, and the Act of Congress of August 1, 1942, and the Act of Congress of August 1, 1944, and the Act of Congress of August 1, 1946, and the Act of Congress of August 1, 1948, and the Act of Congress of August 1, 1950, and the Act of Congress of August 1, 1952, and the Act of Congress of August 1, 1954, and the Act of Congress of August 1, 1956, and the Act of Congress of August 1, 1958, and the Act of Congress of August 1, 1960, and the Act of Congress of August 1, 1962, and the Act of Congress of August 1, 1964, and the Act of Congress of August 1, 1966, and the Act of Congress of August 1, 1968, and the Act of Congress of August 1, 1970, and the Act of Congress of August 1, 1972, and the Act of Congress of August 1, 1974, and the Act of Congress of August 1, 1976, and the Act of Congress of August 1, 1978, and the Act of Congress of August 1, 1980, and the Act of Congress of August 1, 1982, and the Act of Congress of August 1, 1984, and the Act of Congress of August 1, 1986, and the Act of Congress of August 1, 1988, and the Act of Congress of August 1, 1990, and the Act of Congress of August 1, 1992, and the Act of Congress of August 1, 1994, and the Act of Congress of August 1, 1996, and the Act of Congress of August 1, 1998, and the Act of Congress of August 1, 2000, and the Act of Congress of August 1, 2002, and the Act of Congress of August 1, 2004, and the Act of Congress of August 1, 2006, and the Act of Congress of August 1, 2008, and the Act of Congress of August 1, 2010, and the Act of Congress of August 1, 2012, and the Act of Congress of August 1, 2014, and the Act of Congress of August 1, 2016, and the Act of Congress of August 1, 2018, and the Act of Congress of August 1, 2020, and the Act of Congress of August 1, 2022, and the Act of Congress of August 1, 2024.



SCHEDULE OF PROPERTY								
No.	Grantor	Grantee	Inst.	Date	Record	Cost	Area	Remarks
1	S. P. Co.	...	...	...	...	...	...	...
2	S. P. Co.	...	...	...	...	...	...	...
3	S. P. Co.	...	...	...	...	...	...	...
4	S. P. Co.	...	...	...	...	...	...	...
5	S. P. Co.	...	...	...	...	...	...	...
6	S. P. Co.	...	...	...	...	...	...	...
7	S. P. Co.	...	...	...	...	...	...	...
8	S. P. Co.	...	...	...	...	...	...	...
9	S. P. Co.	...	...	...	...	...	...	...
10	S. P. Co.	...	...	...	...	...	...	...
11	S. P. Co.	...	...	...	...	...	...	...
12	S. P. Co.	...	...	...	...	...	...	...
13	S. P. Co.	...	...	...	...	...	...	...
14	S. P. Co.	...	...	...	...	...	...	...
15	S. P. Co.	...	...	...	...	...	...	...
16	S. P. Co.	...	...	...	...	...	...	...
17	S. P. Co.	...	...	...	...	...	...	...
18	S. P. Co.	...	...	...	...	...	...	...
19	S. P. Co.	...	...	...	...	...	...	...
20	S. P. Co.	...	...	...	...	...	...	...

RIGHT OF WAY AND TRACK MAP  
 PLACERVILLE BRANCH - SACRAMENTO TO PLACERVILLE  
 SOUTHERN PACIFIC COMPANY  
 DESIGNED BY  
 SOUTHERN PACIFIC COMPANY  
 SACRAMENTO OFFICE, 11 BROAD STREET, SACRAMENTO  
 DRAWN BY T. H. SMITH  
 SCALE 1" = 400' HORIZ. SCALE  
 DATE: 1914



