

# Tahoe Resource Conservation District



**Jason Burke**  
**Board President**

**Mike Vollmer**  
**Executive Director**

# Finance and Administration



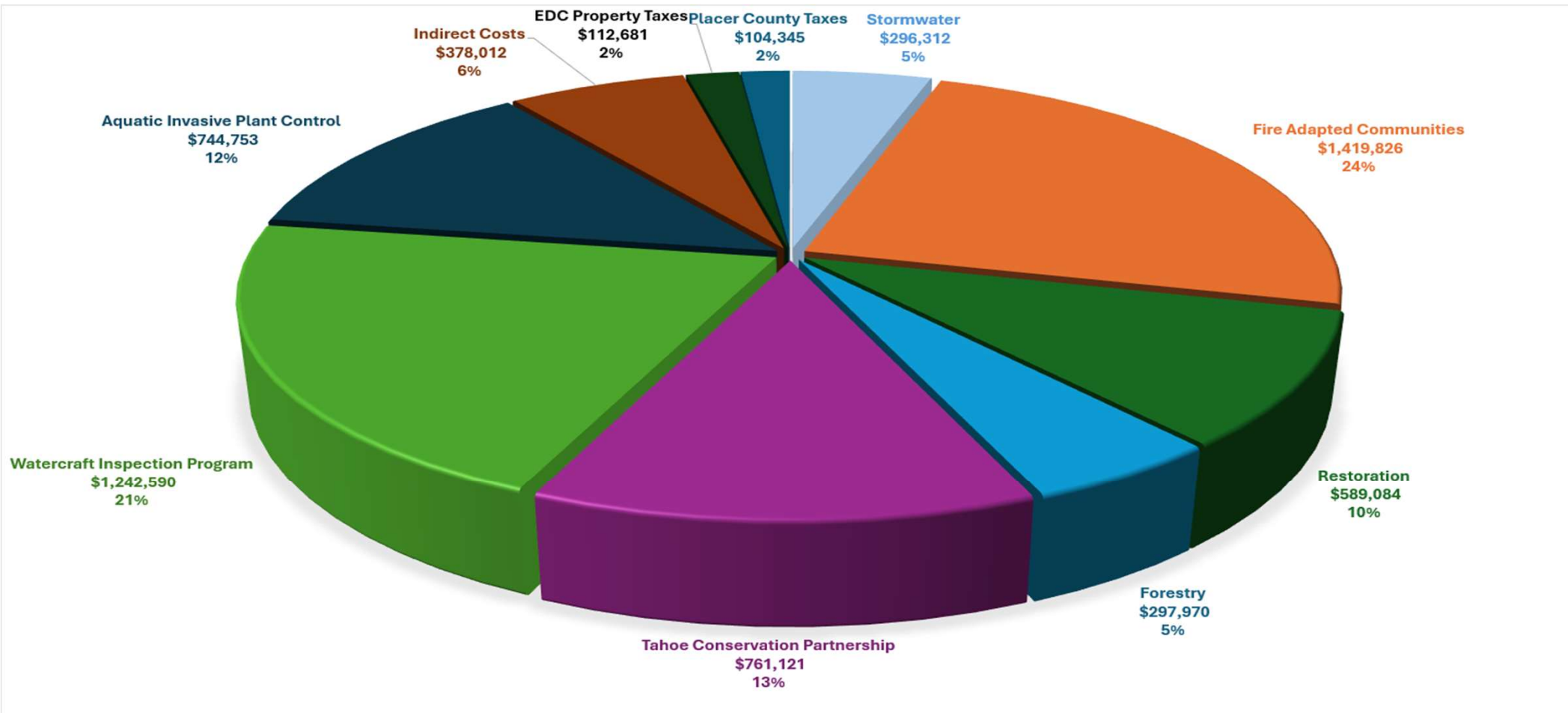
## Tahoe RCD Staff & Programs

- 24 Year-round staff
- 48 Seasonal staff from May-October annually
- 8 Programs
  - AIS Control
  - AIS Prevention
  - Fire Adapted Communities
  - Forestry
  - Stormwater
  - Restoration
  - Tahoe Fire and Fuels Team
  - Tahoe Conservation Program





## Fiscal 2023-2024 Revenue by Program



# Stormwater Program



## Stormwater Monitoring Program



- Support local jurisdictions in meeting TMDL requirements
  - Regional Stormwater Monitoring Program (RSWMP)
  - Green infrastructure planning
  - Stormwater research
  - Pilot project implementation



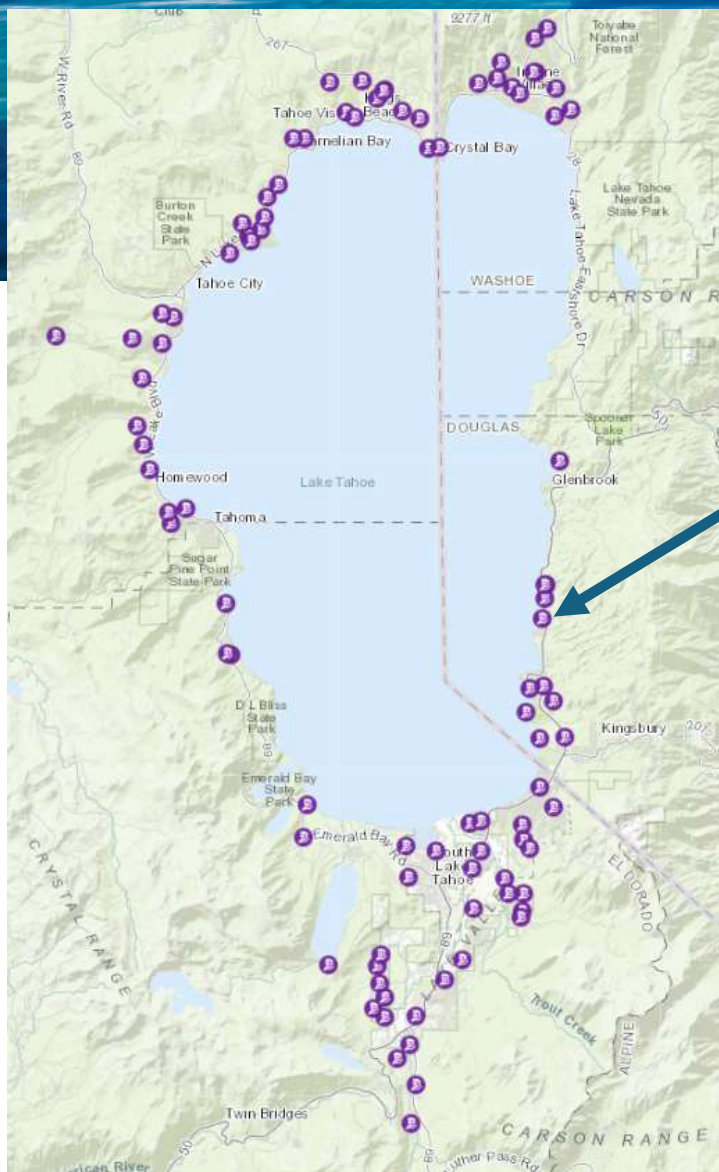
# Forest Health and Community Wildfire Support



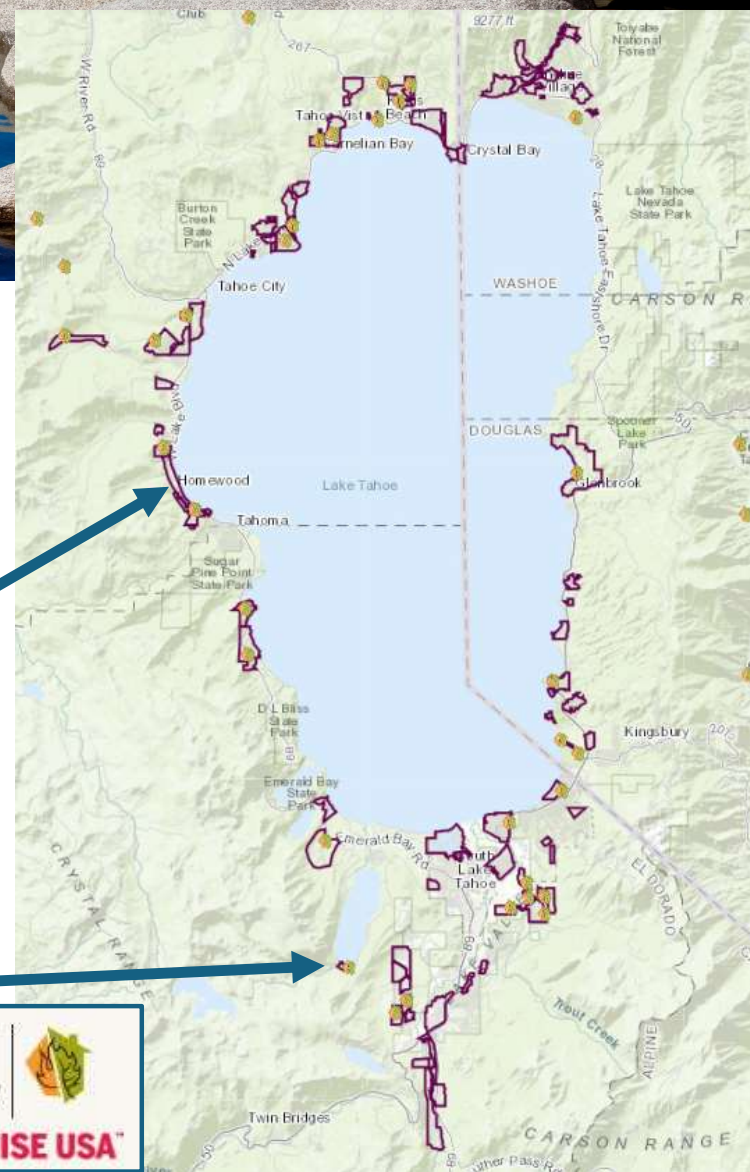
Community Wildfire Protection Program – Fire Adapted Communities  
Forest Restoration Program – Forestry Services  
Tahoe Fire and Fuels Team Program Management  
CTC Tahoe Conservation Partnership







- 149 Neighborhood Leaders
- 99 Engaged Fire Adapted Communities  
(48 - April 2022) 103
- 65 Firewise USA recognized sites  
(12 - April 2022) 83









# Watercraft Inspection Program



## Watersheds and Water Quality



"The Gold Standard" Since 2008

Prevent the Introduction of AIS in  
the Lake Tahoe Region

- Boats are #1 Vector
- Watercraft Inspections
  - Assess Risk
- Decontaminations
  - Lower Risk



### Partnerships

- TRPA
  - Partner to Contracting
  - Multi-Jurisdictional Ordinances
- Marinas
  - Public and Private



# Aquatic Invasive Plant Control



## Watersheds and Water Quality



### Program Objectives

Control (plant removal)

Surveillance Monitoring

Rapid Response (new detections)



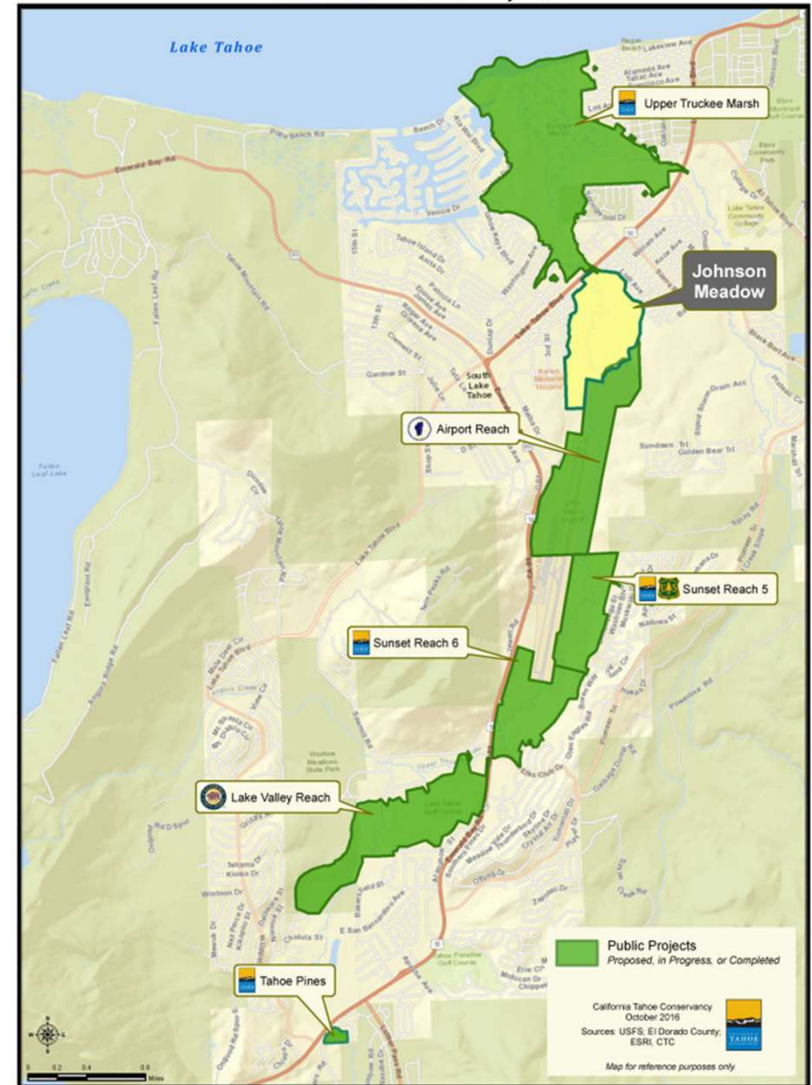


# Johnson Meadow

## Restoration Program



### Johnson Meadow & Upper Truckee River Restoration Projects







## Q & A



Tahoe Resource Conservation District  
(530) 543-1501  
[admin@tahoe.ca.gov](mailto:admin@tahoe.ca.gov)  
[TahoeRCD.org](http://TahoeRCD.org)