

Community Wildfire Safety Program

EL DORADO COUNTY BOARD OF SUPERVISORS

October 18, 2022



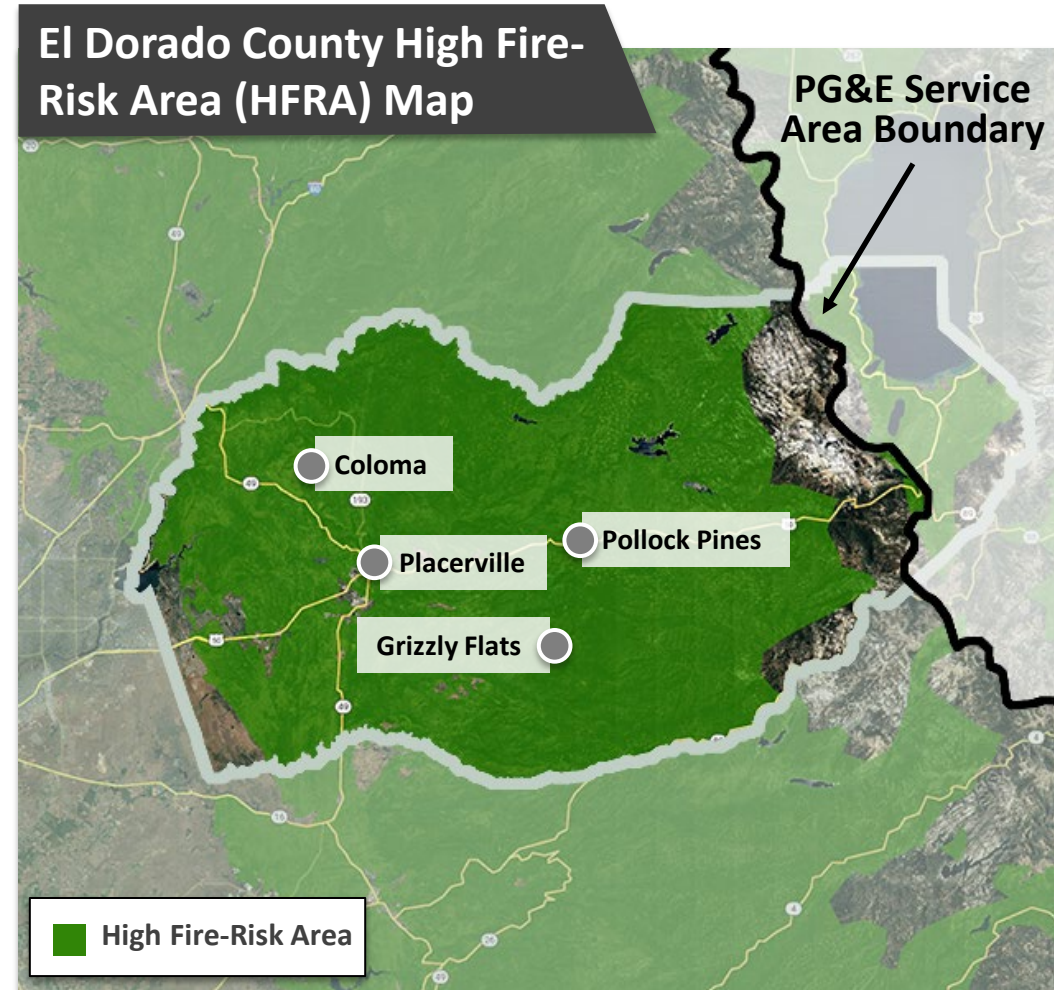


Topics for Discussion

- 1 | Wildfire Risk and Safety Work in El Dorado County
- 2 | Enhanced Powerline Safety Settings (EPSS)
- 3 | Public Safety Power Shutoff (PSPS)
- 4 | Customer Resources

We target wildfire mitigation efforts in the areas and communities at highest risk.

PG&E's High Fire-Risk Area (HFRA) map builds upon the CPUC's High Fire Threat District map, providing a greater understanding of wildfire risk and where to prioritize work.



MITIGATE WILDFIRE RISK



MINIMIZE CUSTOMER IMPACT



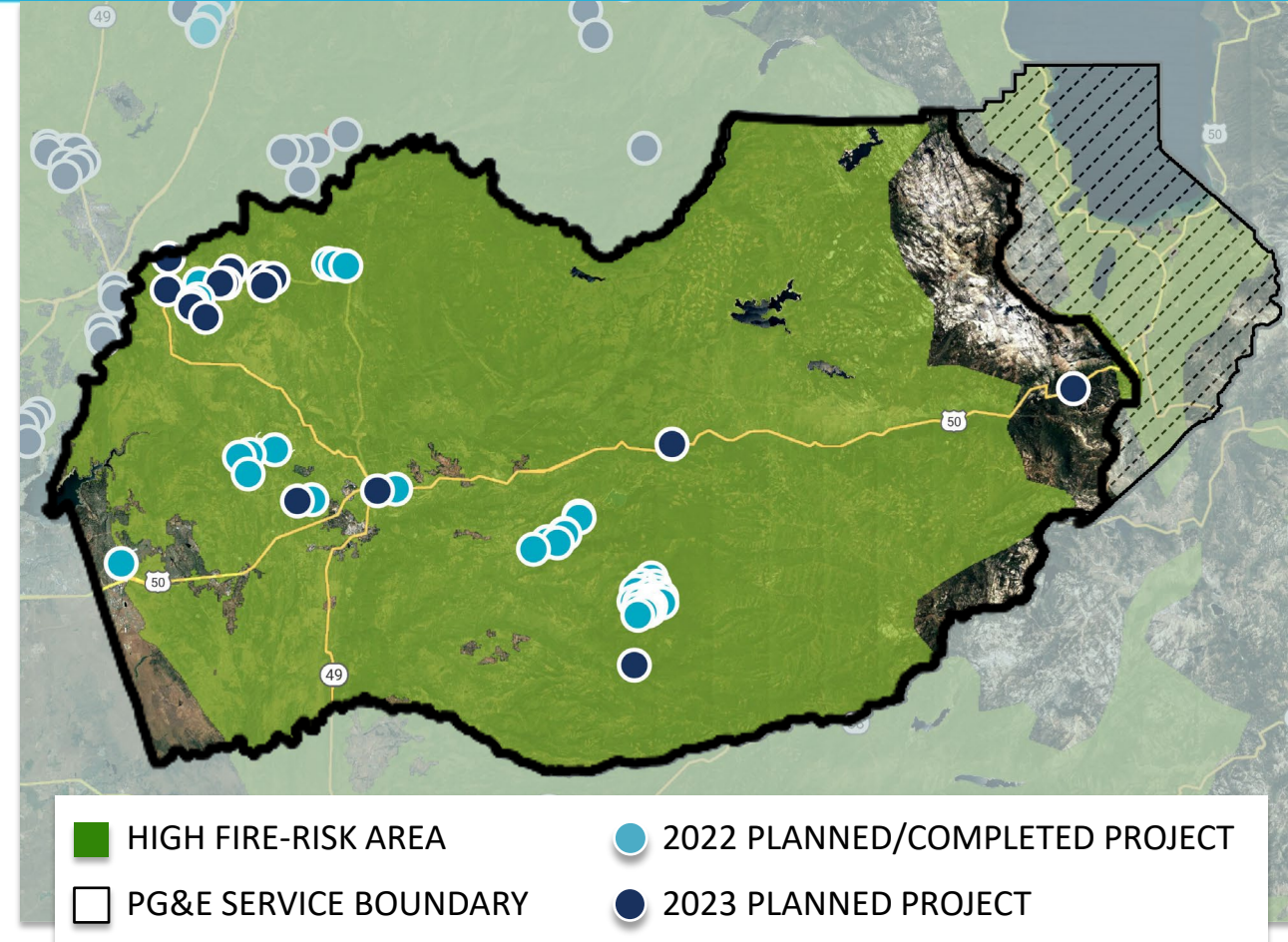
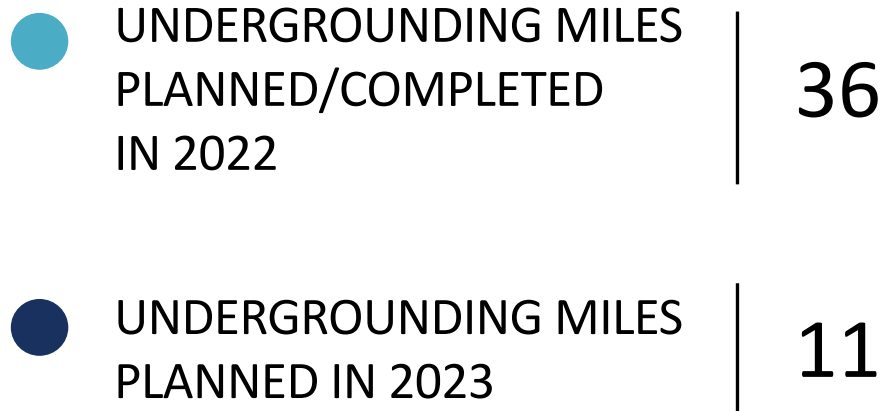
MAXIMIZE SITUATIONAL AWARENESS





Undergrounding in El Dorado County

Strengthening the electric system by undergrounding powerlines in and near high fire-risk areas.



Note: Data is as of 10/1/2022. Planned miles reflect undergrounding projects that are in any stage of the planning process. Planned miles exceed annual targets, and mileage in your community may increase or decrease due to access, weather, permitting or other constraints. If planned work is not completed during the year originally identified it will continue through planning/construction phases during subsequent years.

Customers can find more information about our undergrounding efforts by visiting: pge.com/undergrounding

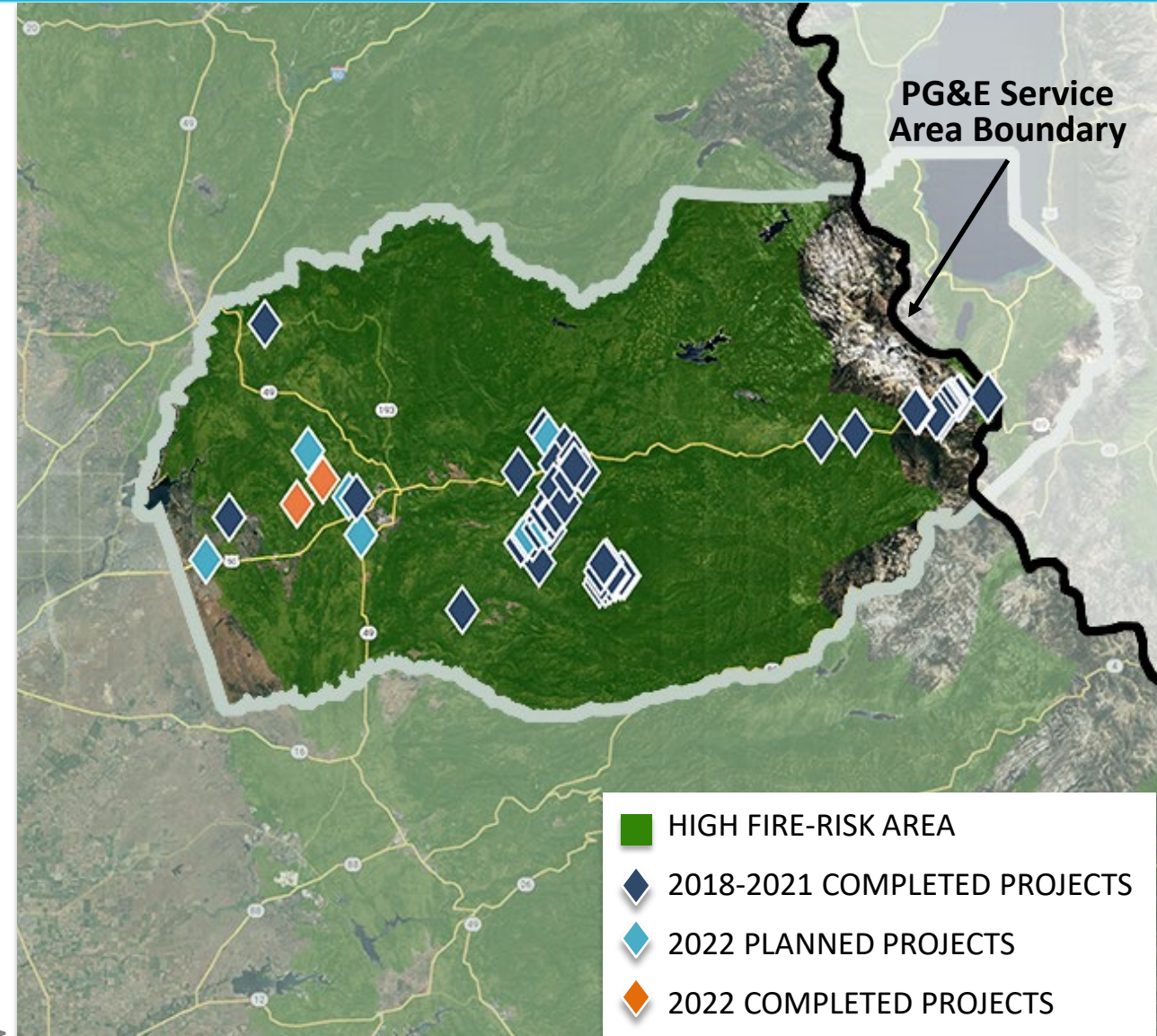


Overhead System Hardening in El Dorado County

Strengthening the electric system by installing stronger poles and covered powerlines which are more resistant to severe weather and wildfire risk.

	MILES COMPLETED THROUGH 2021	85
	MILES PLANNED IN 2022	30
	MILES COMPLETED IN 2022	21

Customers can find more information on system hardening by visiting: pge.com/systemhardening



Data as of 9/1/2022. Local work plans are subject to change. Locations 22-1901A, 6, and 27 may overlap.

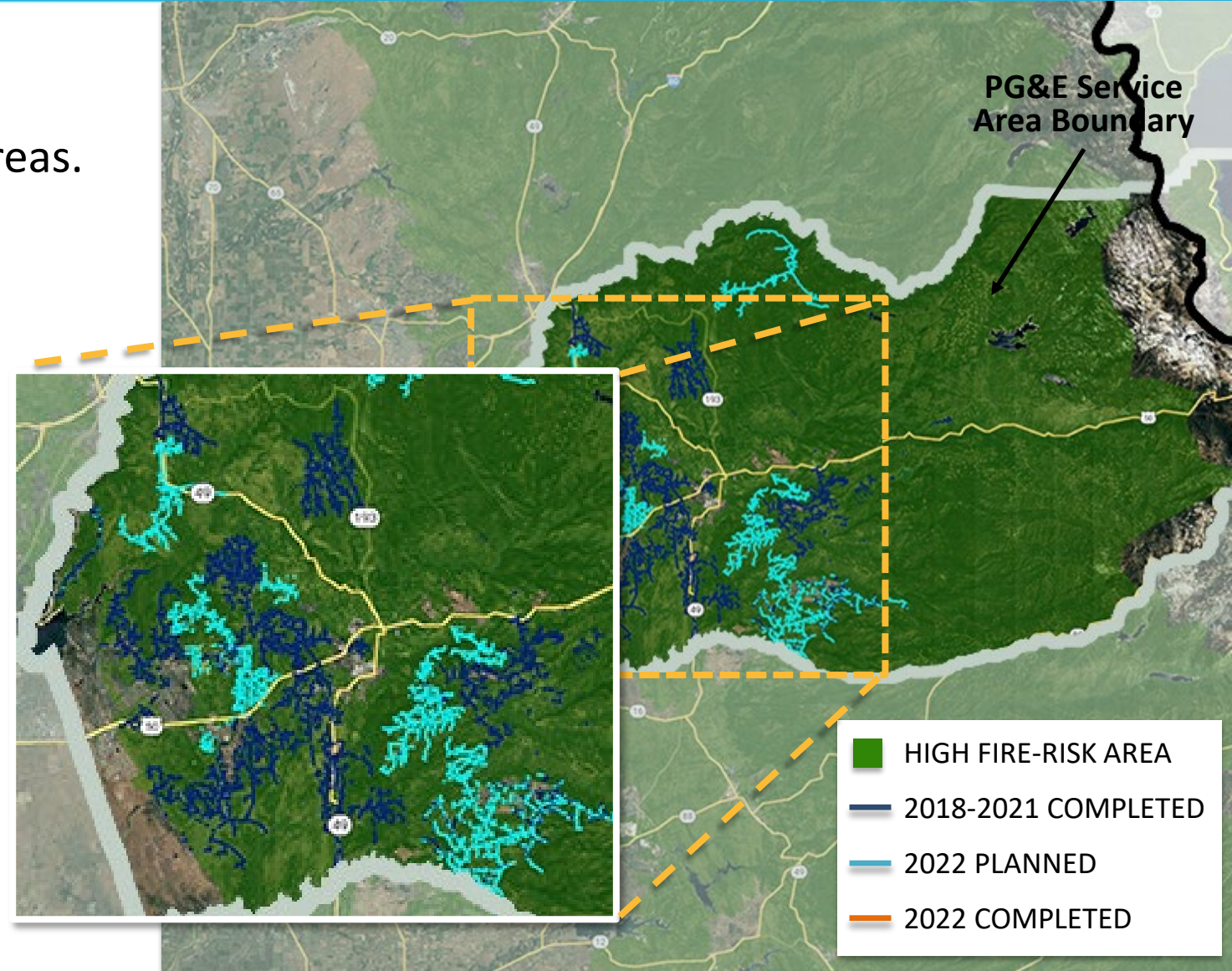


Enhanced Vegetation Management in El Dorado County

Addressing vegetation that poses a higher potential for wildfire risk in high fire-risk areas.



Customers can find more information about our vegetation management work by visiting: pge.com/evm



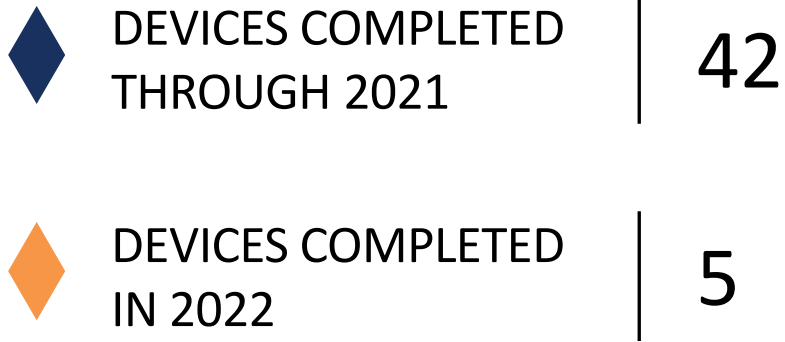
Data as of 8/31/2022. Local work plans are subject to change. Locations are approximate and may overlap.

Some of the measures included in this presentation are contemplated as additional precautionary measures intended to further reduce the risk of wildfires.

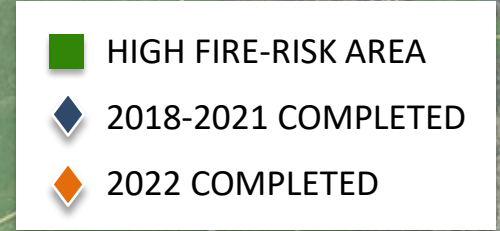
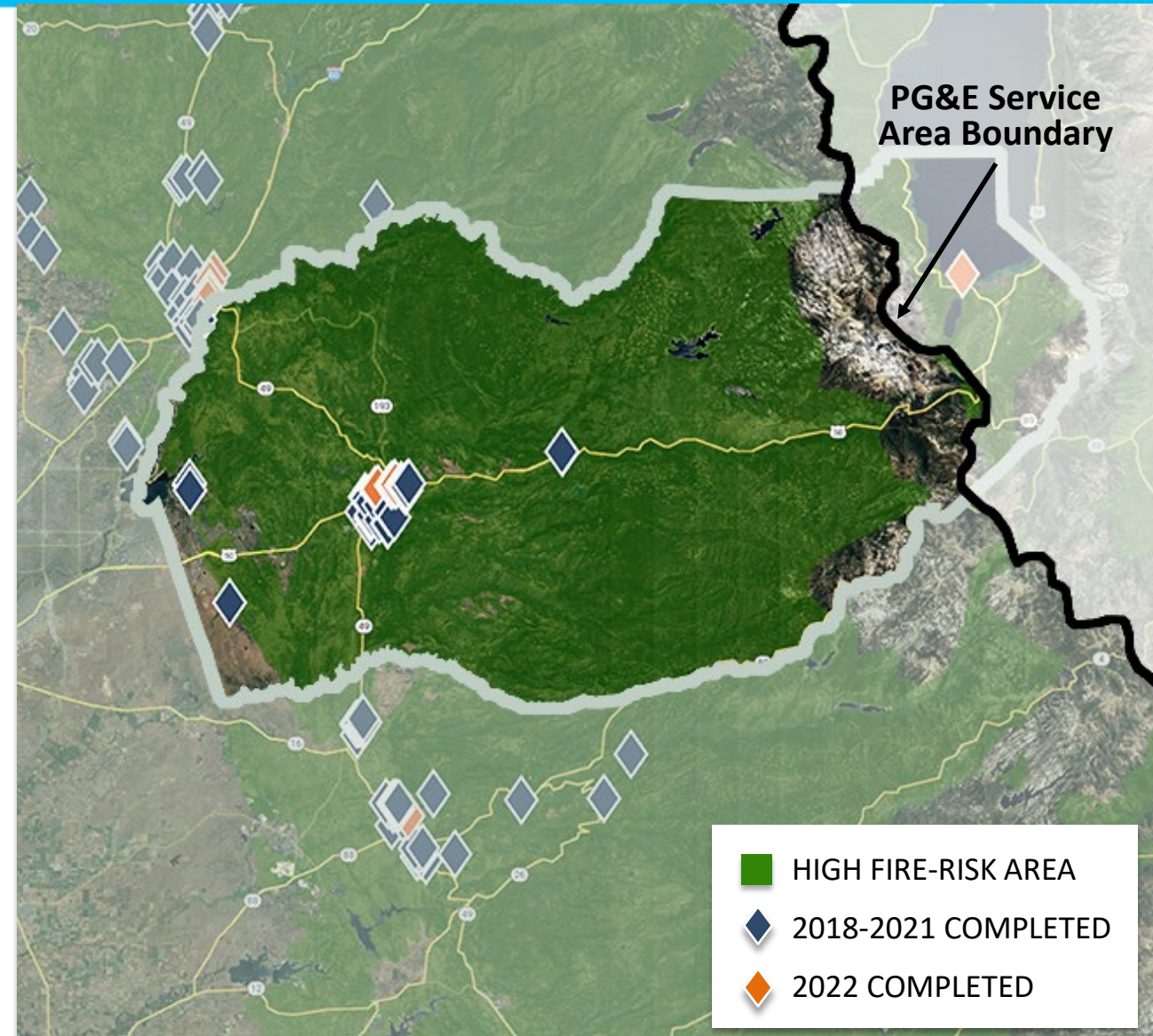


Sectionalizing Devices in El Dorado County

Separating the grid into smaller sections and limiting the number of customers impacted by Public Safety Power Shutoffs (PSPS).



Additional Sectionalizing Devices are adjacent to El Dorado County and can potentially provide support during an outage

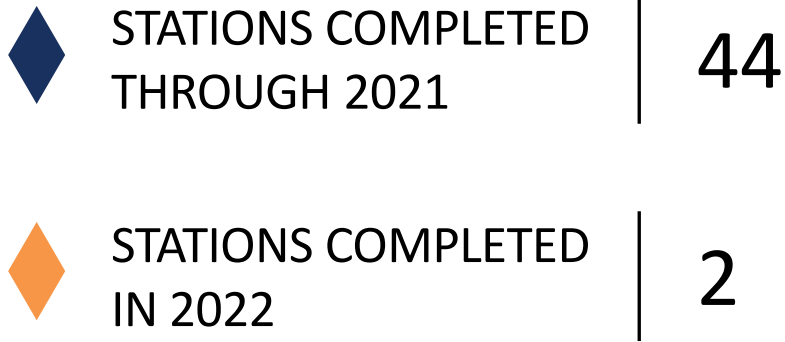


Data as of 9/1/2022. Local work plans are subject to change. Locations are approximate and may overlap. 22-1901-A 8 of 27



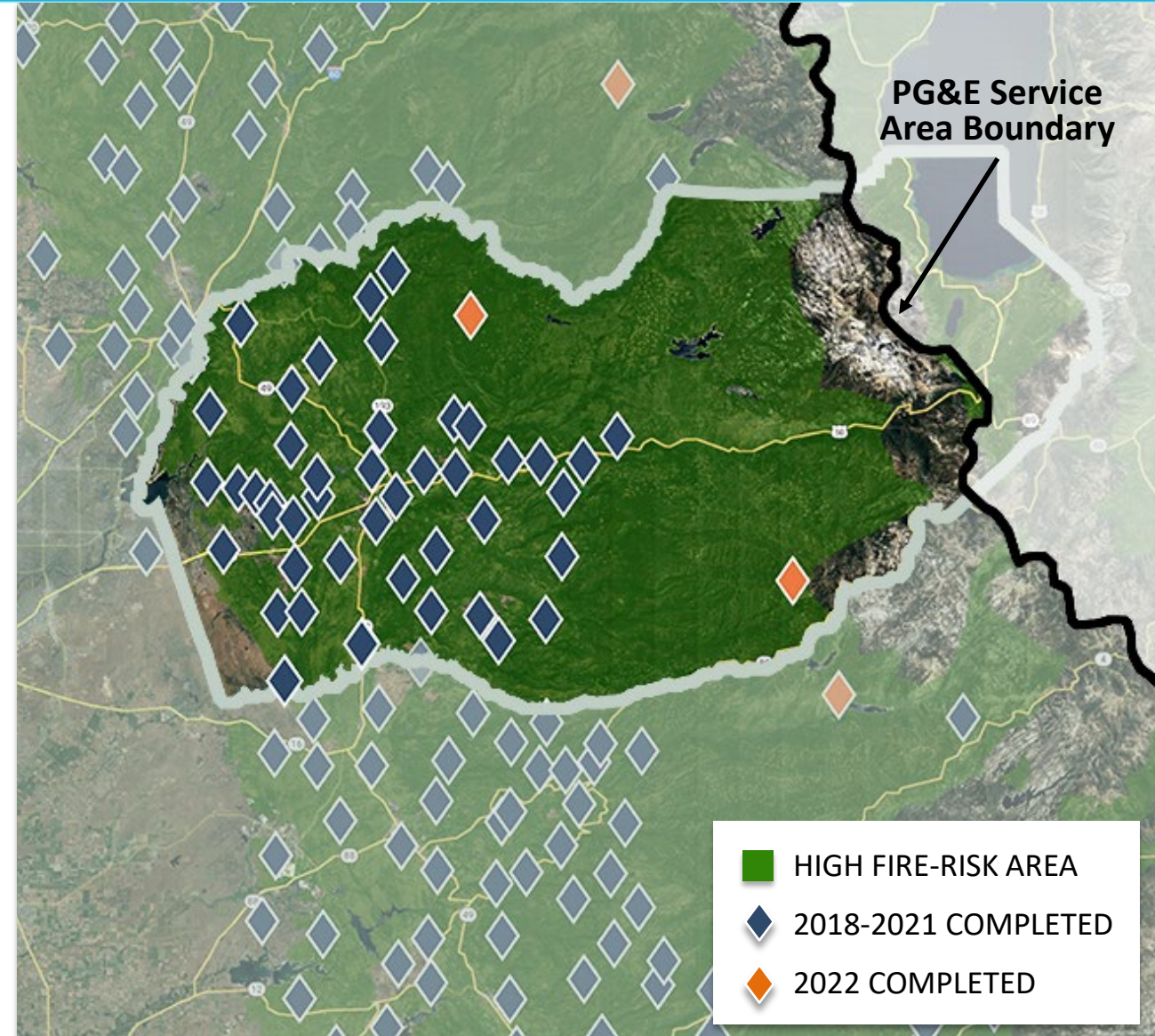
Weather Stations in El Dorado County

Improving our weather forecasting capabilities allows us to better predict and respond to severe weather threats.



Additional Weather Stations are adjacent to El Dorado County and can support weather forecasting capabilities

Customers can find more information about weather stations by visiting: pge.com/weather



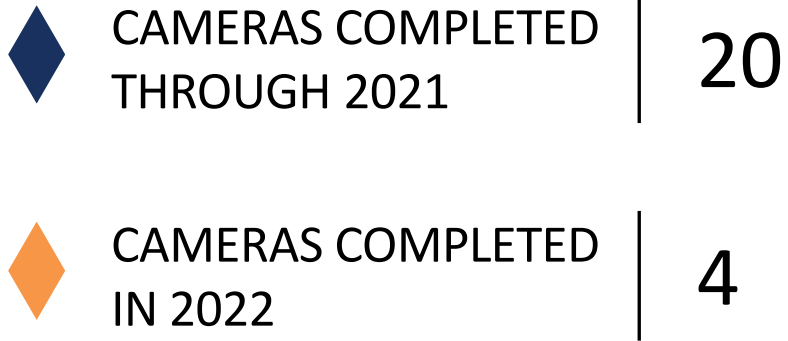
Data as of 9/1/2022. Local work plans are subject to change. Locations are approximate and may overlap.

Some of the measures included in this presentation are contemplated as additional precautionary measures intended to further reduce the risk of wildfires.



High-Definition Cameras in El Dorado County

Enhancing our ability to monitor and respond to wildfires in our service area.



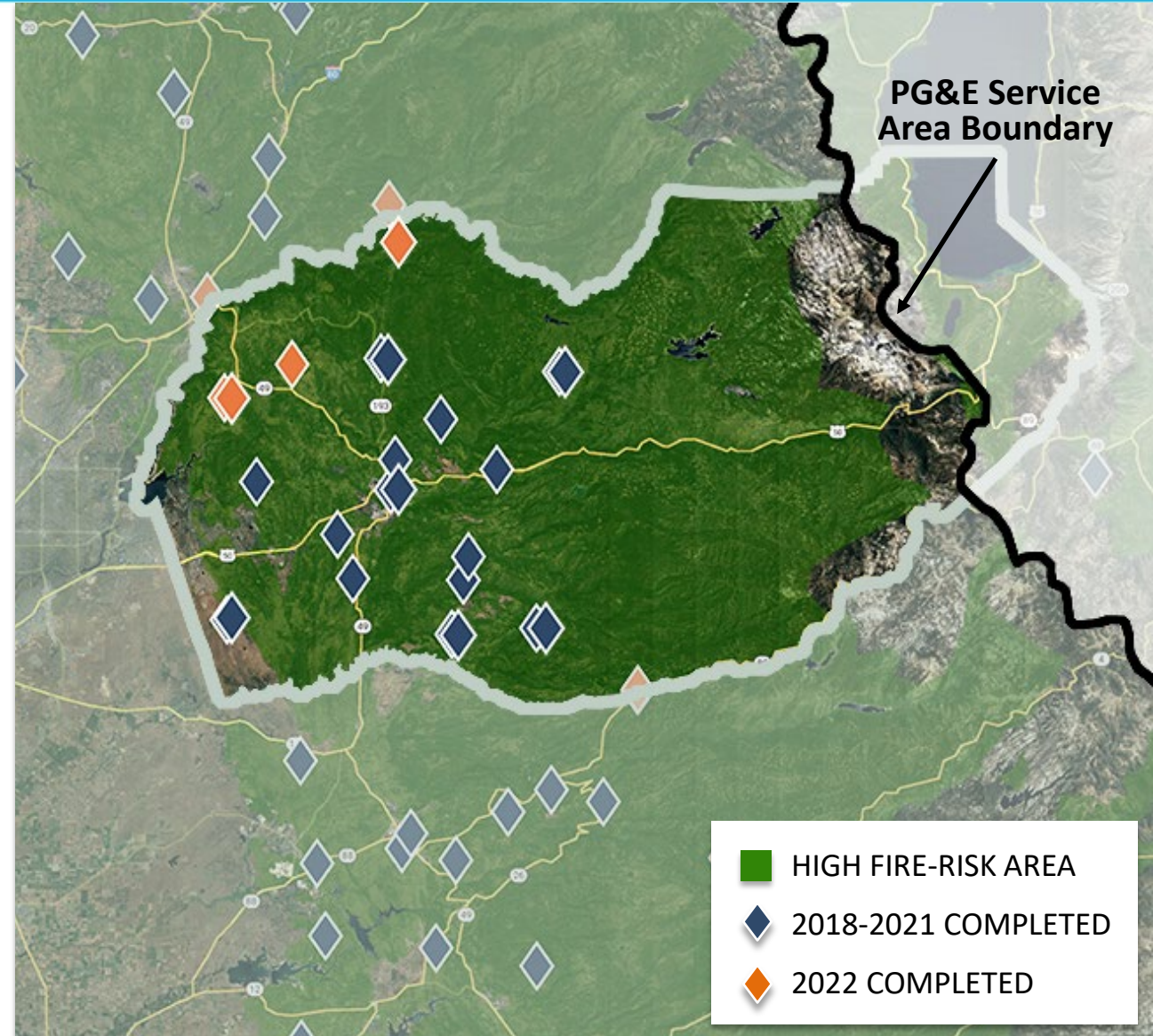
Additional Hi-Definition Cameras are adjacent to El Dorado County and can support weather monitoring

Our cameras are part of the ALERTWildfire system used by fire managers at the Bureau of Land Management, the U.S. Forest Service, CAL FIRE and local fire departments in four states.

Data and images are publicly available at:

Alertwildfire.org

pge.com/weather



Data as of 9/1/2022. Local work plans are subject to change. Locations are approximate and may overlap.

Some of the measures included in this presentation are contemplated as additional precautionary measures intended to further reduce the risk of wildfires.

Enhanced Powerline Safety Settings





Enhanced Powerline Safety Settings (EPSS) A Technology To Prevent Wildfires

How It Works

PG&E powerlines have equipment that allows power to automatically turn off within one-tenth of a second if there is a wildfire risk, like a tree branch or other object striking the line.

Why We Do It

Quickly and automatically shutting off power when a hazard is detected can help stop wildfires before they have a chance to start.

Preventing Wildfires

80% decrease in CPUC-reportable ignitions
in 2021 on EPSS-enabled circuits.
compared to the prior 3-year average as of 12/31/21.

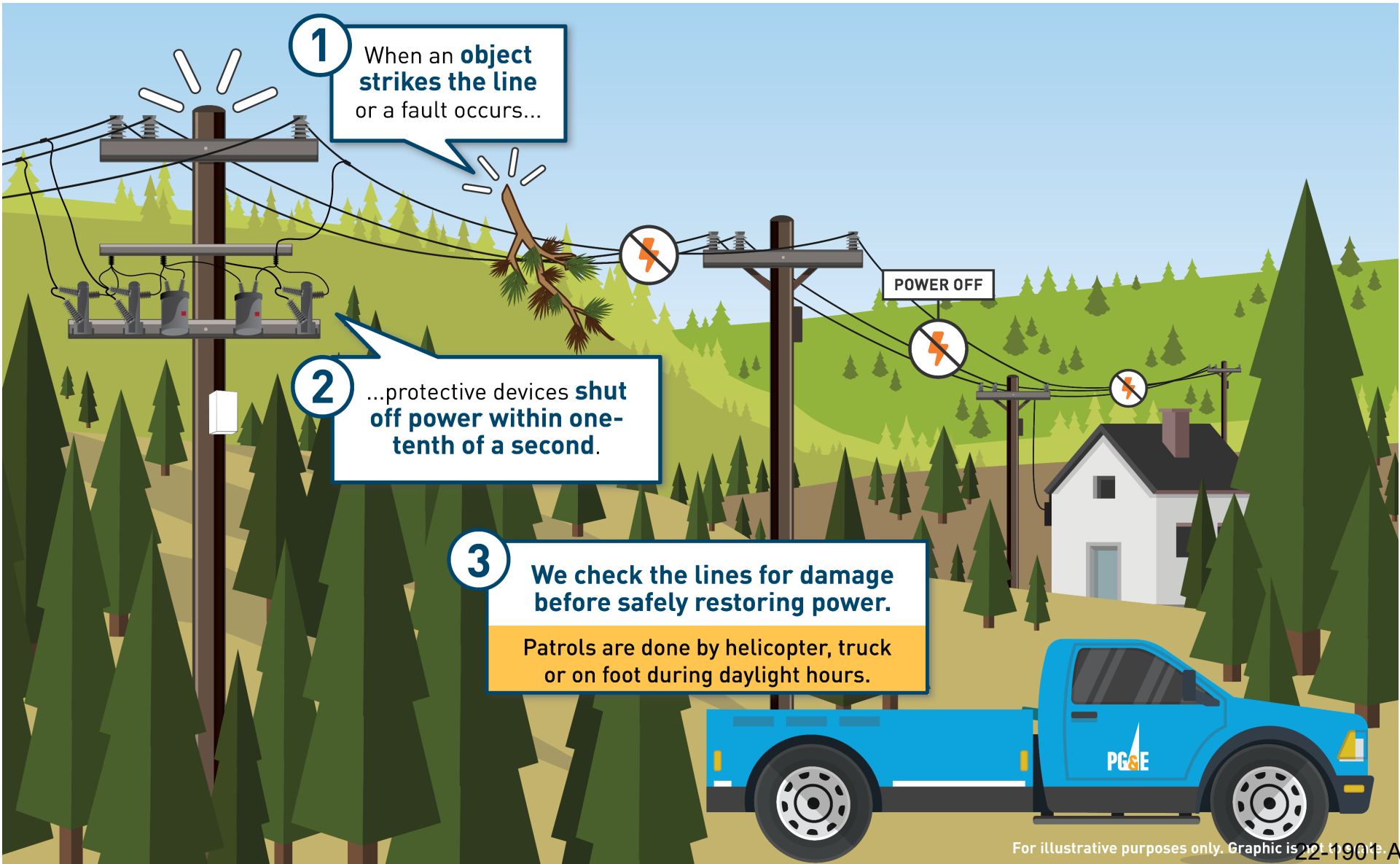


SAFETY SETTINGS IN ACTION

An example of these settings preventing a potential ignition in Santa Cruz County, when a tree branch fell into a powerline in 2022 and power was quickly and automatically turned off.

22-1901 A 12 of 27

What Are Enhanced Powerline Safety Settings?

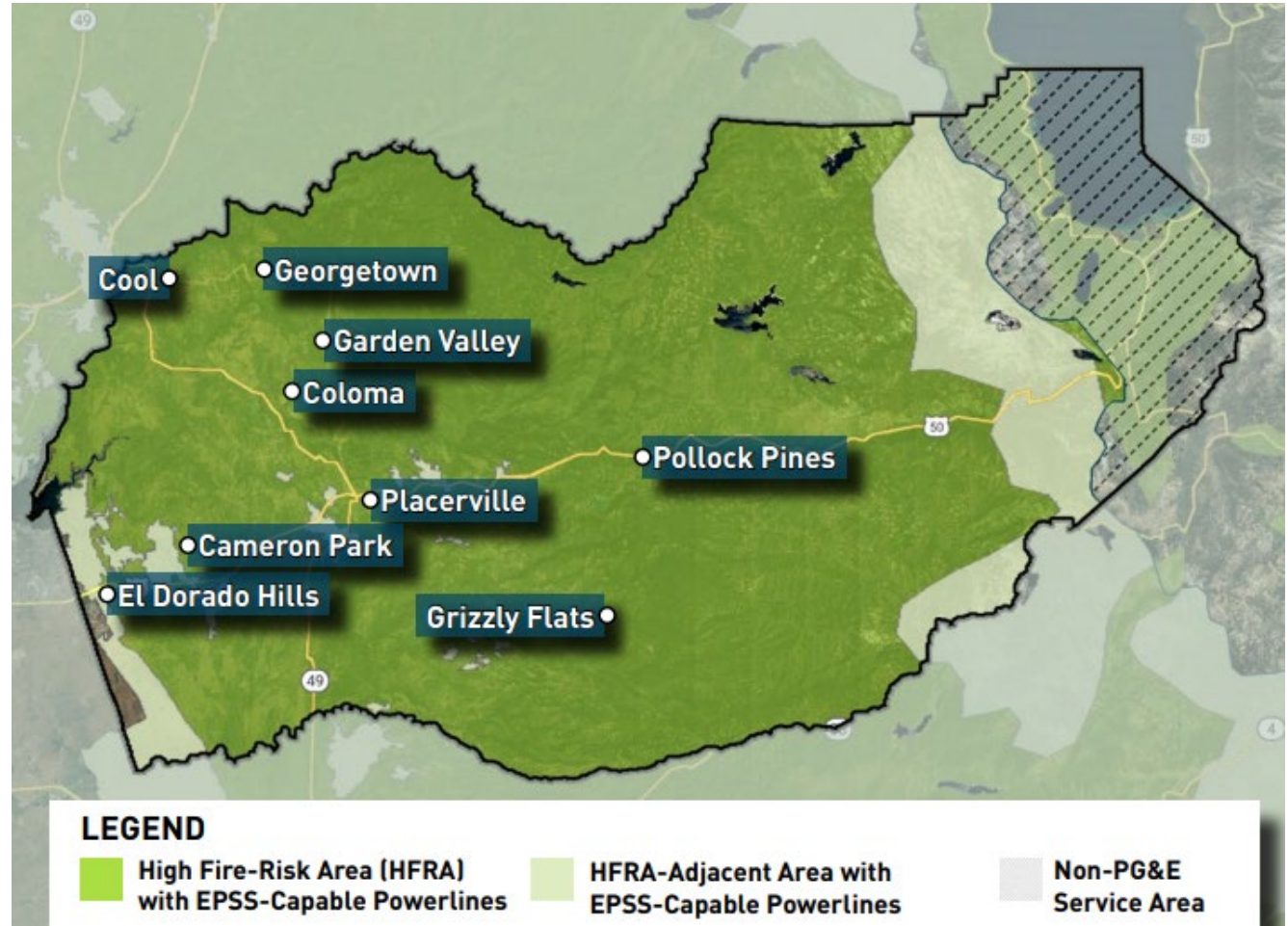


For illustrative purposes only. Graphic is 22-1901-A 13 of 27

Wildfire Prevention in El Dorado County

- > Conducting additional targeted vegetation management on trees near powerlines in the area to minimize potential hazards
- > Adjusting the sensitivity of safety settings where possible to improve reliability
- > Installing technology to help quickly identify power outage locations
- > Expanding eligibility for:
 - Generator rebates
 - Backup power transfer meters

Enhanced Powerline Safety Settings in El Dorado County



Note: This map is for illustrative purposes only. Impacted circuits are subject to change due to weather and wildfire risk, among other constraints. Data is as of 3/23/2022.

When are outages most likely to occur?

- When elevated fire risk is present.
- Most likely from May to November.

How will customers be notified?

- Through automated calls, texts or emails about when to expect the power back.
- Since outages happen automatically, we are unable to provide advance notification.



Public Safety Power Shutoff





What is a Public Safety Power Shutoff?

High winds and dangerous conditions can cause branches to contact powerlines. This could damage our equipment and cause a wildfire.

To prevent such fires, we may need to turn off power as a last resort.



What Conditions Could Lead to a PSPS?



Low humidity levels 30% and below



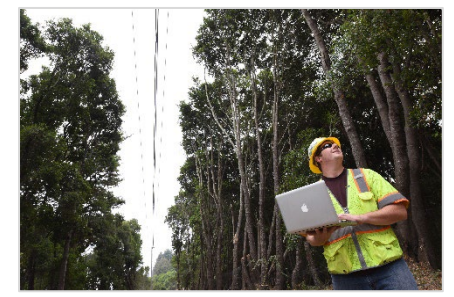
Forecasted high winds above 19 mph and gusts above 30-40 mph



A Red Flag Warning issued by the National Weather Service



Condition of dry material on the ground and low moisture content of vegetation

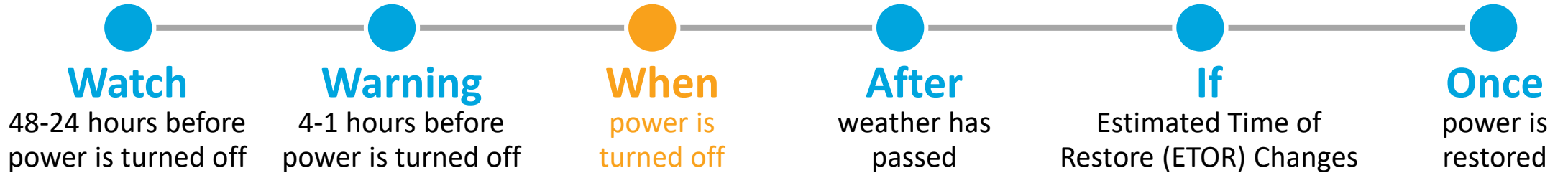


On-the-ground, real-time observations

How Are Customers Notified for a PSPS?

When severe weather is forecast, we provide advance notice prior to turning off power. Updates are sent until power is restored.

Timing of Notifications (when possible)



How We'll Notify

Notifications sent via automated calls, texts and emails (available in sixteen languages).

We will also use pge.com, social media and will inform local news and radio.

@pacificgasandelectric
 @PGE4Me

@pacificgasandelectric

Address Alerts

Receive notifications about PSPS for any location, such as:

- The home of a friend or loved one
- Your child's school or day care
- Your work or business

Annual registration is required.



Enroll at: pge.com/addressalerts



Community Resource Centers in El Dorado County

During PSPS outages, we open Community Resources Centers (CRCs) where customers can access resources and up-to-date information.

CRC Locations in El Dorado County

CITY	SITE	ADDRESS	TYPE
Cameron Park	Cameron Park Community Center	2502 Country Club Drive	Indoor
Cameron Park	Faith Episcopal Church	2200 Country Club Drive	Outdoor
Cameron Park	Foothills Church	2380 Merrychase Drive	Outdoor
Cameron Park	Pizza Factory	3421 Coach Lane	Outdoor
Cool	Cool Community Church	863 Cave Valley Road	Outdoor
Cool	Cool Shopping Center	5020 Ellinghouse Drive	Outdoor
El Dorado Hills	El Dorado Hills Community Center	1021 Harvard Way	Indoor
El Dorado Hills	Rolling Hills Christian Church	800 White Rock Road	Outdoor
El Dorado Hills	Vintage Grace Church	931 Lassen Lane	Outdoor
El Dorado Hills	El Dorado Hills Community Center	1021 Harvard Way	Indoor
Georgetown	Buffalo Hill Center	6023 Front Street, 6049 Front Street, 6065 State Hwy 193	Outdoor
Georgetown	Georgetown Library	680 Orleans Street	Indoor – In Progress

CITY	SITE	ADDRESS	TYPE
Placerville	El Dorado County Fair & Event Center	100 Placerville Drive	Indoor
Placerville	El Dorado County Fair & Event Center	100 Placerville Drive	Outdoor
Placerville	Placerville Library	345 Fair Lane	Outdoor
Placerville	Pleasant Valley Community Hall	4765 Pleasant Valley Grange Road	Indoor
Pollock Pines	Knotty Pine Lanes	2667 Sanders Drive #1	Outdoor
Pollock Pines	Pollock Pines Community Center	2675 Sanders Drive	Indoor
Somerset	Pioneer Park	6740 Fairplay Road	Indoor
Somerset	Pioneer Park	6740 Fairplay Road	Outdoor

For more information and where to find a CRC location in your area leading up to and during a PSPS outage, visit



Community Based Organization (CBO) Partnerships

We are providing targeted resources and support through our partnerships with community-based organizations.

2

Food Banks

- El Dorado Food Bank
- Placer Food Bank

We are partnering with

2

community-based organizations
in your hometown



22-1901 A 21 of 27

Customer Resources





Customer Resources and Support for PSPS Outages and EPSS

Portable Battery Program

Supporting eligible customers with fully subsidized portable battery solutions.

pge.com/pspsresources



California Foundation for Independent Living Centers

Providing qualifying customers with hotel stays, food stipends and more.

cfilc.org



Generator and Battery Rebate Program

Rebates for eligible customers to purchase a qualifying generator or battery.

pge.com/backupper



Partnership with 211

24-7 free and confidential support and resources via calls or texts to 211.

211ca.org

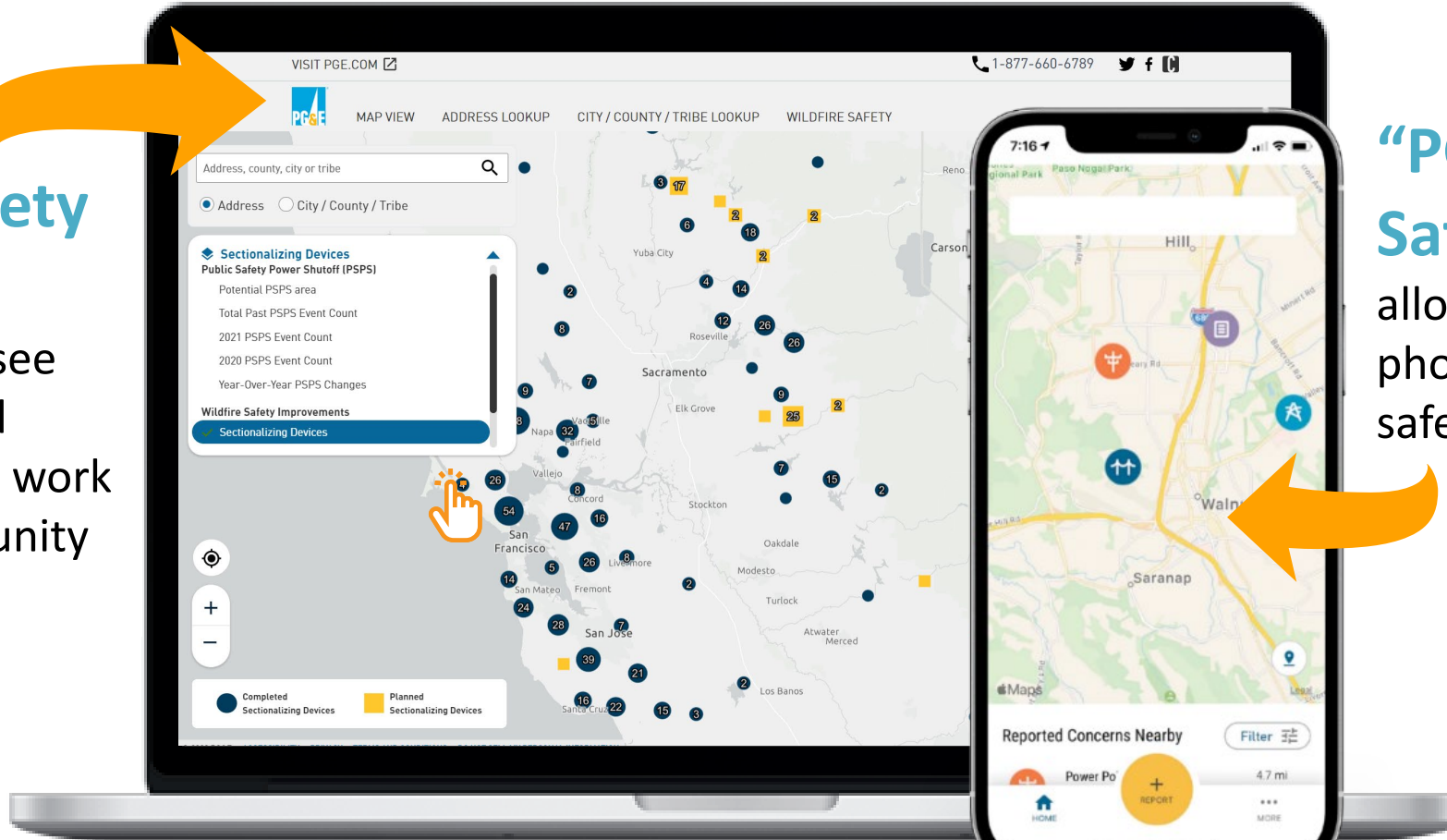




Personalized Information for Our Customers

Online Safety Maps

let customers see completed and planned safety work in their community



“PG&E Report It” Safety App

allows customers to submit photos of non-emergency safety concerns

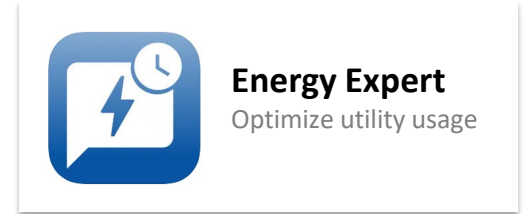
pge.com/customerpspsplanningmaps

pge.com/reportit

Energy Expert Alexa Pilot

PG&E is offering customers a pilot program using an Alexa smart speaker to receive personalized notifications for a Public Safety Power Shutoff (PSPS), electric usage, flex alerts and more.

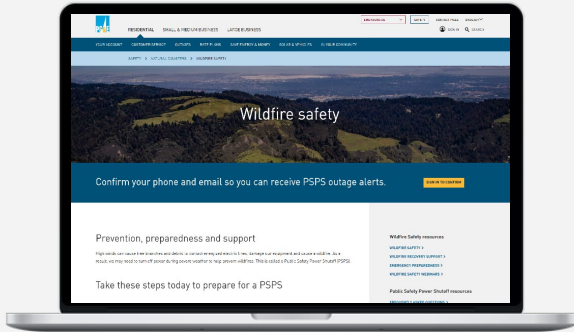
- To join the pilot program, customers can download the “Energy Expert” app and create a free account to chat with Alexa
- Customers can receive PSPS notifications via their Alexa smart speaker, text or push notification while using the app and past event notifications
- Customers will be able to ask Alexa information on the best rate plan for their home and electricity costs
- The pilot will run through December 31, 2022





More Information and Tools For Customers to Prepare

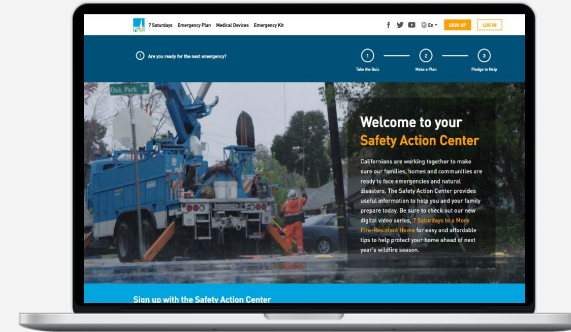
Wildfire Safety



Wildfire prevention efforts

pge.com/wildfiresafety

Safety Action Center



Prepare for wildfire season

safetyactioncenter.pge.com

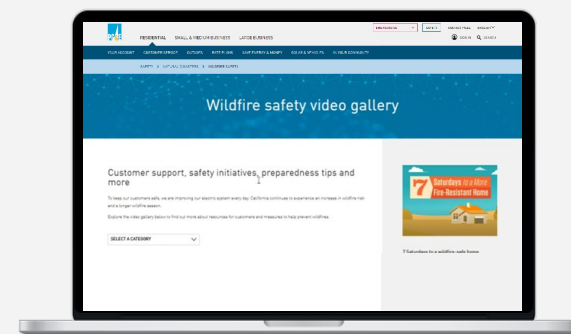
Safety for Kids



Teach kids emergency safety

kidsemergencysafety.com

Wildfire Safety Videos



View videos about resources and safety

pge.com/wildfiresafetyvideos

Dedicated wildfire safety contacts: Hotline: 1-866-743-6589 | Email: wildfiresafety@pge.com

Thank You

