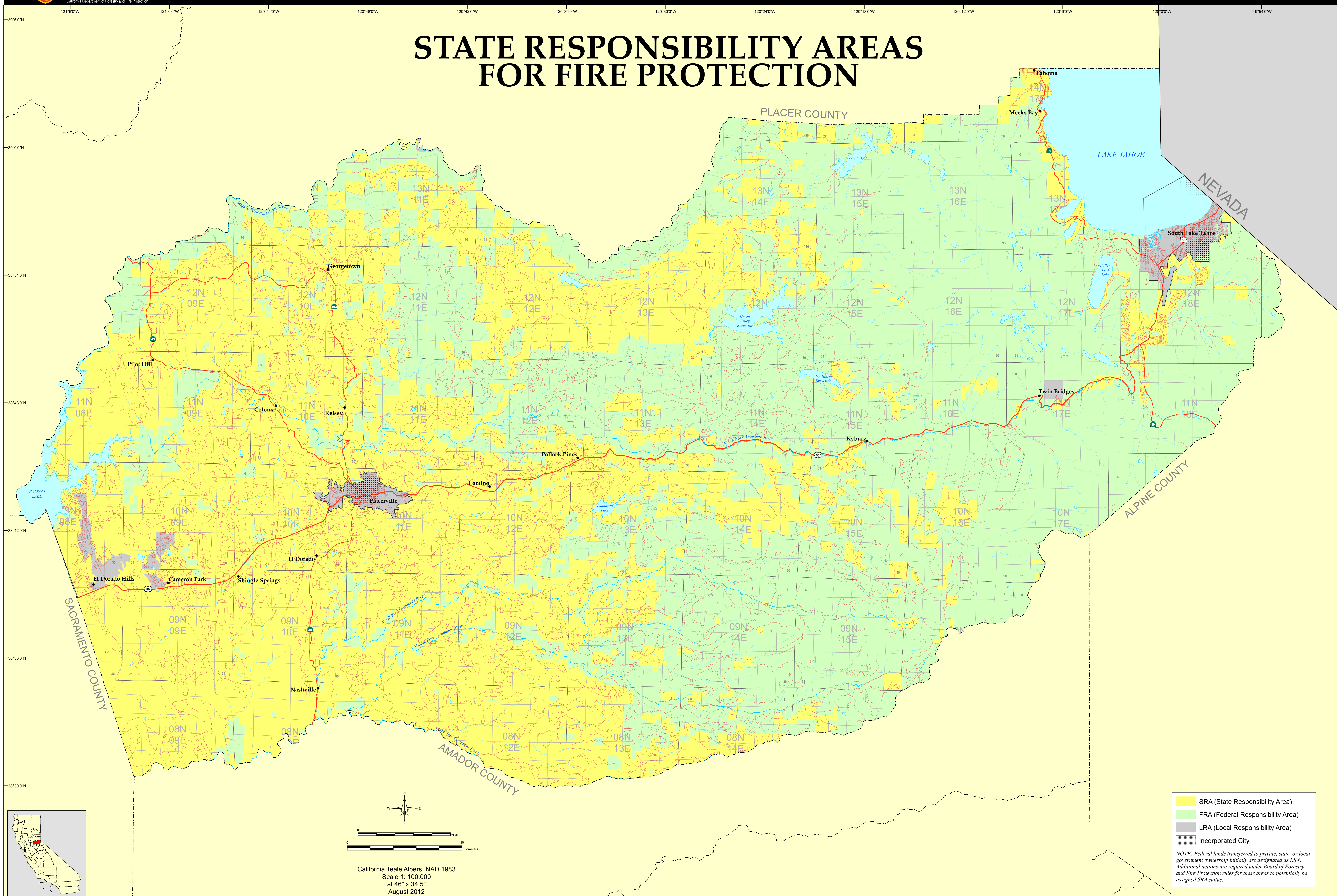
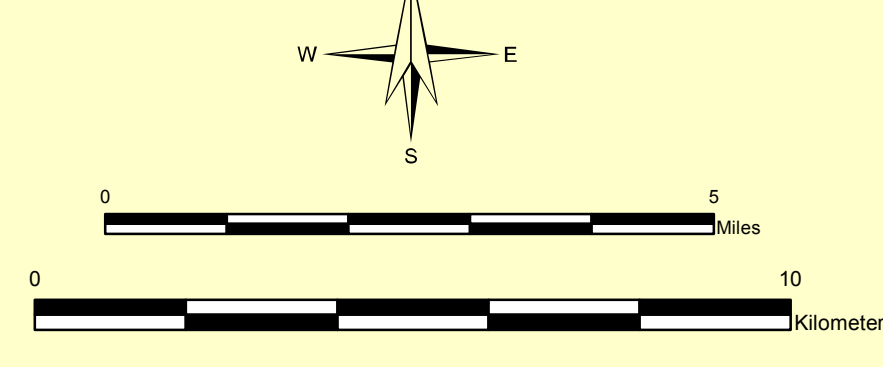


## STATE RESPONSIBILITY AREAS FOR FIRE PROTECTION



SRA (State Responsibility Area)  
 FRA (Federal Responsibility Area)  
 LRA (Local Responsibility Area)  
 Incorporated City

NOTE: Federal lands transferred to private, state, or local government ownership initially are designated as LRA. Additional actions are required under Board of Forestry and Fire Protection rules for these areas to potentially be assigned SRA status.



California Teale Albers, NAD 1983  
Scale 1: 100,000  
at 46° x 34.5°  
August 2012

The State of California and the Department of Forestry and Fire Protection make no representations or warranties regarding the accuracy of data or maps. Neither the State nor the Department shall be liable under any circumstances for any direct, special, incidental, or consequential damages with respect to any claim by any user or third party on account of, or arising from, the use of data or maps.

Obtain FRAP maps, data, metadata and publications on the Internet at <http://frap.cdf.ca.gov>  
For more information, contact CDF-FRAP, PO Box 944246, Sacramento, CA 94244-2460, (916) 327-3939.