

HIGHER EDUCATION
ON THE WESTERN SLOPE OF
EL DORADO COUNTY
FALL 2010

Presentation to the El Dorado County Board of
Supervisors, September 14th, 2010 – Dean Dale van Dam

10-0966 A-1



Opening of the Fall 2010 Semester, August 23rd

Higher Education on the Western Slope of El Dorado County, Fall 2010



Aerial Photographs

Higher Education on the Western Slope of El Dorado County, Fall 2010



Opening of the Fall 2010 Semester, August 23rd

Higher Education on the Western Slope of El Dorado County, Fall 2010



Opening of the Fall 2010 Semester, August 23rd

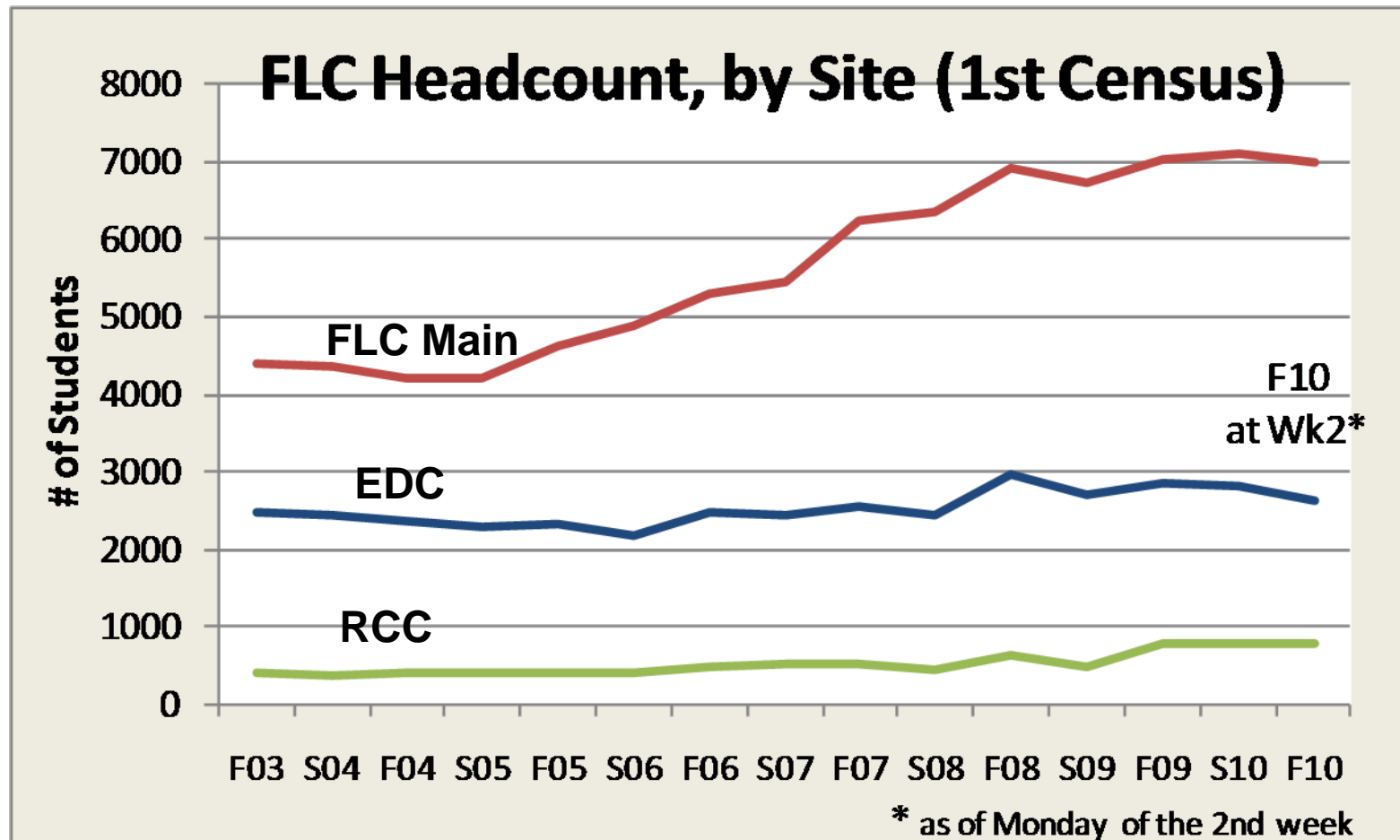
Higher Education on the Western Slope of El Dorado County, Fall 2010



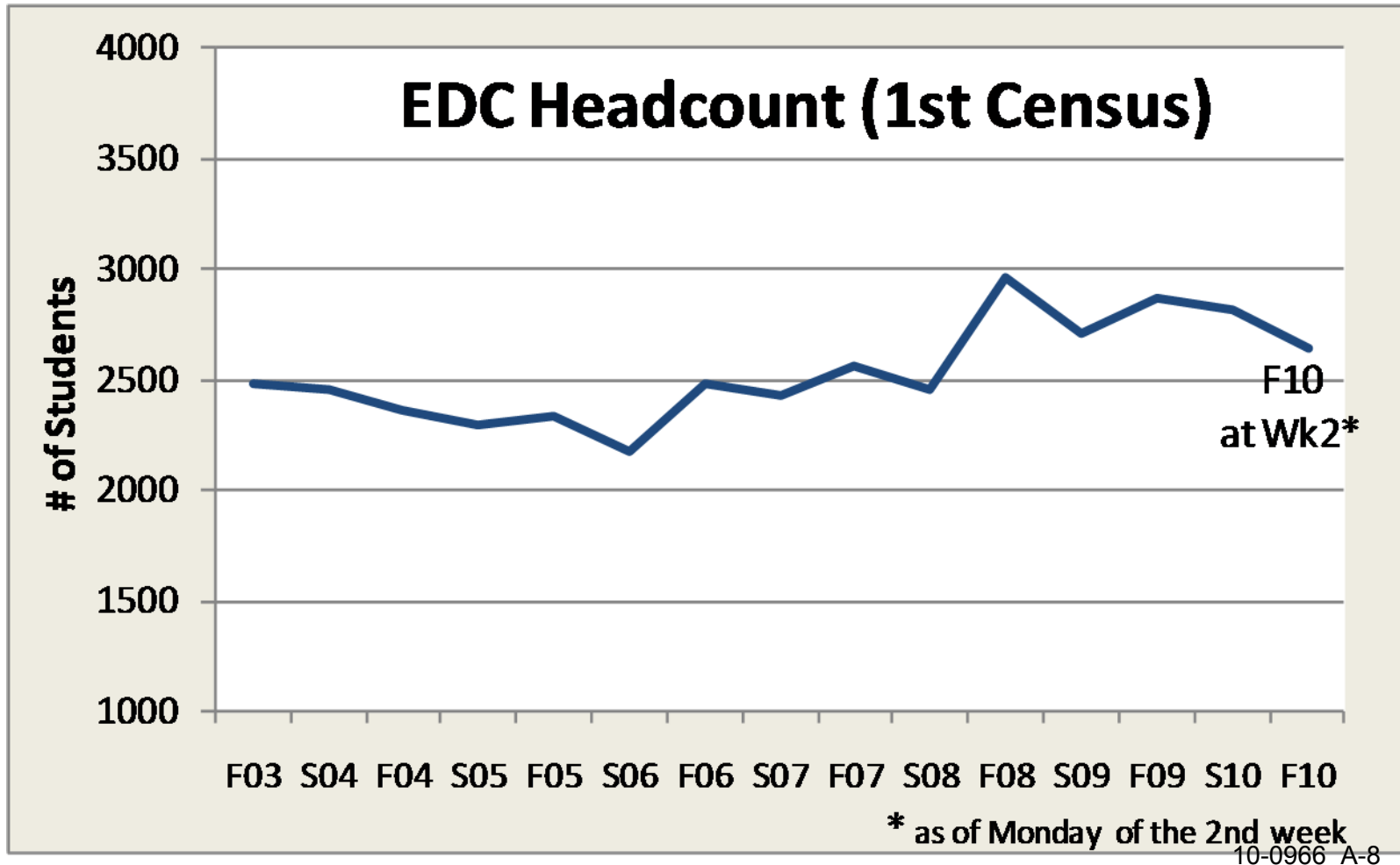
Enrollment and FTEF Trends

Higher Education on the Western Slope of El Dorado County, Fall 2010

Enrollment Trends – All FLC



Enrollment Trends - EDC



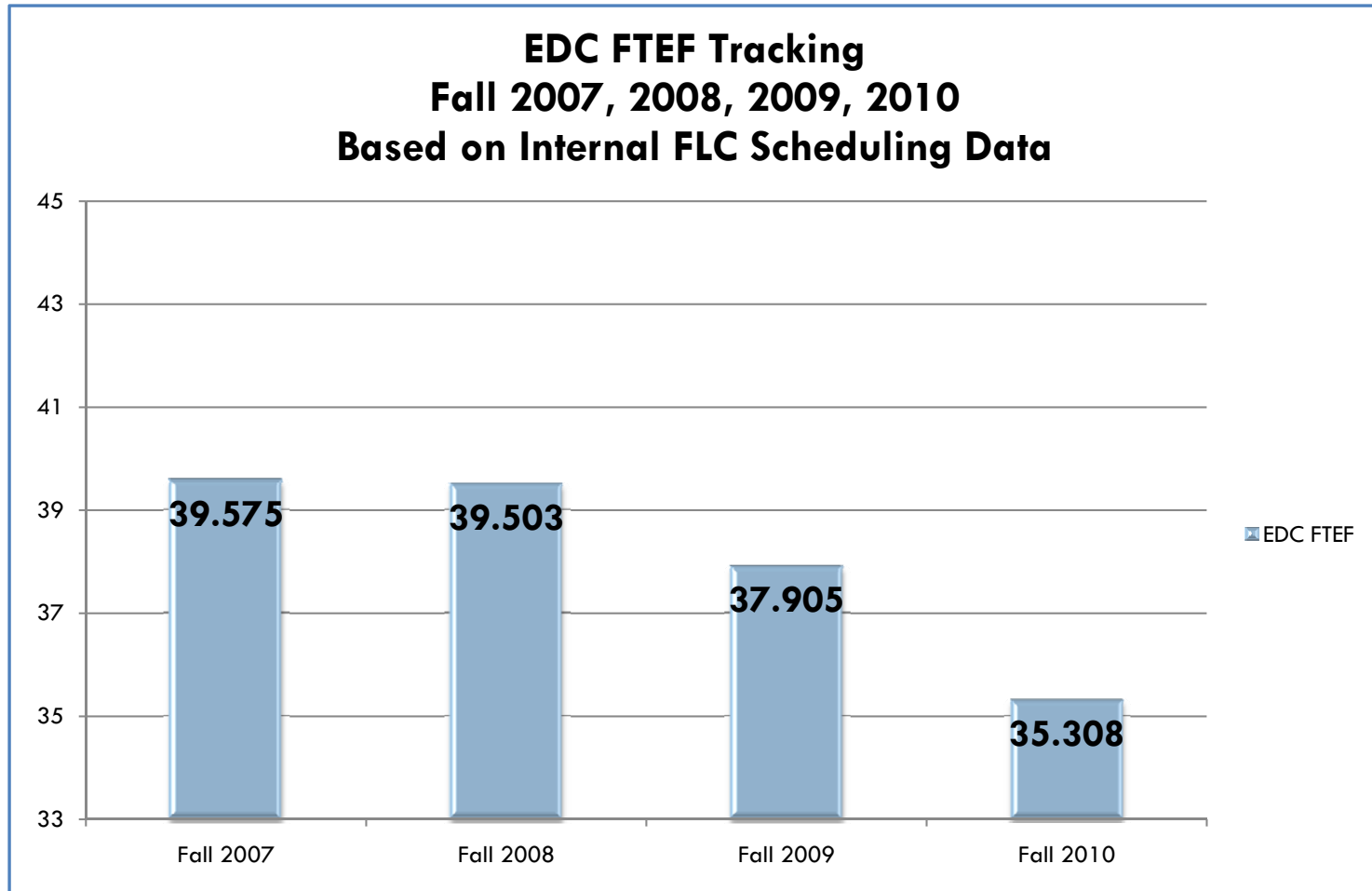
FTEF Trends at FLC/EDC – '07-'10

FTEF Tracking at FLC and EDC

Last Update:30-Aug-2010

Semester	Overall FTEF	Annual % inc./dec.	Total "non-release" FLC FTEF	Annual % inc./dec.	EDC FTEF	Annual % inc./dec.
Fall 2007	166.326		152.476		39.575	
Fall 2008	173.022	4.03%	153.522	0.69%	39.503	-0.18%
Fall 2009	170.226	-1.62%	155.043	0.99%	37.905	-4.05%
Fall 2010	165.772	-2.62%	150.722	-2.79%	35.308	-6.85%
	<i>Cumulative Δ, F '07 to F '10</i>	<i>-0.33%</i>	<i>Cumulative Δ, F '07 to F '10</i>	<i>-1.15%</i>	<i>Cumulative Δ, F '07 to F '10</i>	<i>-10.78%</i>

FTEF at the El Dorado Center, '07-'10





Operating Budget Issues

Higher Education on the Western Slope of El Dorado County, Fall 2010

LRCCD Facts

- LRCCD includes 4 comprehensive colleges (American River, Sacramento City, Cosumnes River, and Folsom Lake)
- Enrollment exceeds 90,000 students
- 92 of every 1,000 residents in LRCCD's service area is enrolled in a Los Rios college (state-wide average is 72/1,000)

LRCCD Fiscal Policies

- Extreme fiscal responsibility
 - ▣ OTO monies used only for OTO expenses
 - ▣ Annually, 3 budgets developed, most conservative is used for operations; any incremental income is distributed only after all expenses met
 - ▣ Expenditures never based on projected revenues
 - ▣ Staff pay often supplemented by one time summer payment (the “retro”), computed after real year-end revenues and expenditures are known

2008-2009 and 2009-2010 Operating Budgets

- Not surprisingly, significant decrease in State funding for California CC's
- Operating budgets cut by at least 10% (in some categorical programs, cuts of up to 50%)
- FTEF (District-wide) cut by 4%
 - ▣ Cuts reduce student access by cutting class sections
 - ▣ Cuts accomplished by reducing part-time faculty and staff work hours
- LRCCD uses reserves and limited ARRA funding to make up remaining shortfall

Legislative Pressures

- Budgetary reductions have been accompanied by increased legislative oversight
- Sacramento hoping to redefine CC's mission
 - ▣ Transfer
 - ▣ Job training (career technical education)
 - ▣ Basic skills (academic remediation)
 - Exclusion of life-long learning, on-going education, enrichment, etc.
 - Particular pressure on “art” and physical education classes

2010-2011 Operating Budget

- Still under debate
- Proposed features for California CC's:
 - ▣ Enrollment growth funding of 2.21%
 - Partial recognition that CC's cannot continue to serve increasing numbers of students without additional funding
 - ▣ No further reductions to categorical programs
 - No restoration of last FY's funding cuts to these programs
 - ▣ Increasing local district control over how to spend reduced dollars
 - ▣ Negative COLA
 - ▣ No tuition increase (remains at \$26/unit)



Capital/Infrastructure Budgets

Higher Education on the Western Slope of El Dorado County, Fall 2010

Measure M Projects (Infrastructure)

- Passed by voters in November 2008
- Authorizes LRCCD to issue \$475 million in bonds
 - ▣ Matched by \approx \$300 million in other funding sources
- Across the District, new buildings, renovations, retrofitting
 - ▣ Local expenditures to upgrade HVAC, add space in student services, and update classrooms



New PAC - Interior

Higher Education on the Western Slope of El Dorado County, Fall 2010



New PAC - Interior

Higher Education on the Western Slope of El Dorado County, Fall 2010



New PAC - Exterior

Higher Education on the Western Slope of El Dorado County, Fall 2010



- Agreements:
- Open-mindedness
 - Listen to and Respect all points of view
 - Acceptance
 - Don't judge as fast as you can
 - Curiosity
 - Seek to understand rather than persuade
 - Discovery
 - Question all assumptions. Look for new insights
 - Sincerity
 - Speak for yourself about what has personal meaning
 - Brevity
 - Don't be verbose and lengthy, but don't go on and on

Community Partnerships at EDC

Higher Education on the Western Slope of El Dorado County, Fall 2010



“SB70”- Governor’s Career Technical Ed. Grant

Higher Education on the Western Slope of El Dorado County, Fall 2010



“SB70”- Governor’s Career Technical Ed. Grant

Higher Education on the Western Slope of El Dorado County, Fall 2010



“SB70”- Governor’s Career Technical Ed. Grant

Higher Education on the Western Slope of El Dorado County, Fall 2010



“SB70”- Governor’s Career Technical Ed. Grant

Higher Education on the Western Slope of El Dorado County, Fall 2010



I SEE Program, Summer 2010

Higher Education on the Western Slope of El Dorado County, Fall 2010



I SEE Program, Summer 2010

Higher Education on the Western Slope of El Dorado County, Fall 2010



I SEE Program, Summer 2010

Higher Education on the Western Slope of El Dorado County, Fall 2010



I SEE Program, Summer 2010

Higher Education on the Western Slope of El Dorado County, Fall 2010



Cameron Park Rotary Community Observatory

Higher Education on the Western Slope of El Dorado County, Fall 2010



Cameron Park Rotary Community Observatory

Higher Education on the Western Slope of El Dorado County, Fall 2010



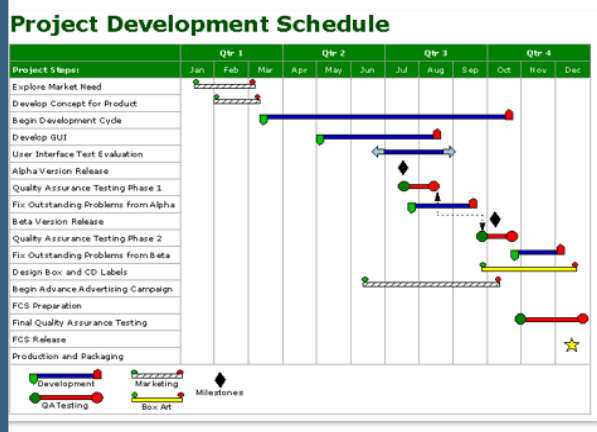
Really Free Apparel Market

Higher Education on the Western Slope of El Dorado County, Fall 2010



EDC Patrons Club

Higher Education on the Western Slope of El Dorado County, Fall 2010



Career Technical Education at EDC/FLC

Higher Education on the Western Slope of El Dorado County, Fall 2010

CTE at EDC/FLC – Existing Programs

- Accounting
- Administration of Justice (AA) (N)
- Business
- Communication Studies
- Computer Information Science
- Early Childhood Education
- Fire Technology (N)
- Graphic Communication
- Group Fitness Instructor (N)
- Human Services
- Management Information Systems
- Non-Profit Management (N)
- Personal Trainer (N)
- Project Management (N)
- Public Management (N)
- Real Estate
- Waste Water Management (N)
- Water Management (N)

CTE at EDC/FLC – Programs in Development

- Phlebotomy
- Medical Laboratory Technician
- Viticulture and Enology
- Wind Power Technician
- Sustainability/Sustainable Agriculture



Fall Event at the El Dorado Center – October 6th, 5:30-7:30 pm

Higher Education on the Western Slope of El Dorado County, Fall 2010