

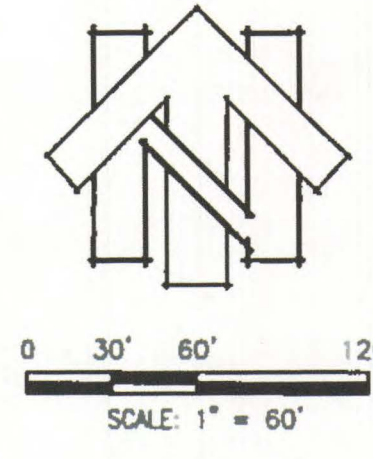


# FIGURE B-1

## RIDGEVIEW VILLAGE UNIT 9

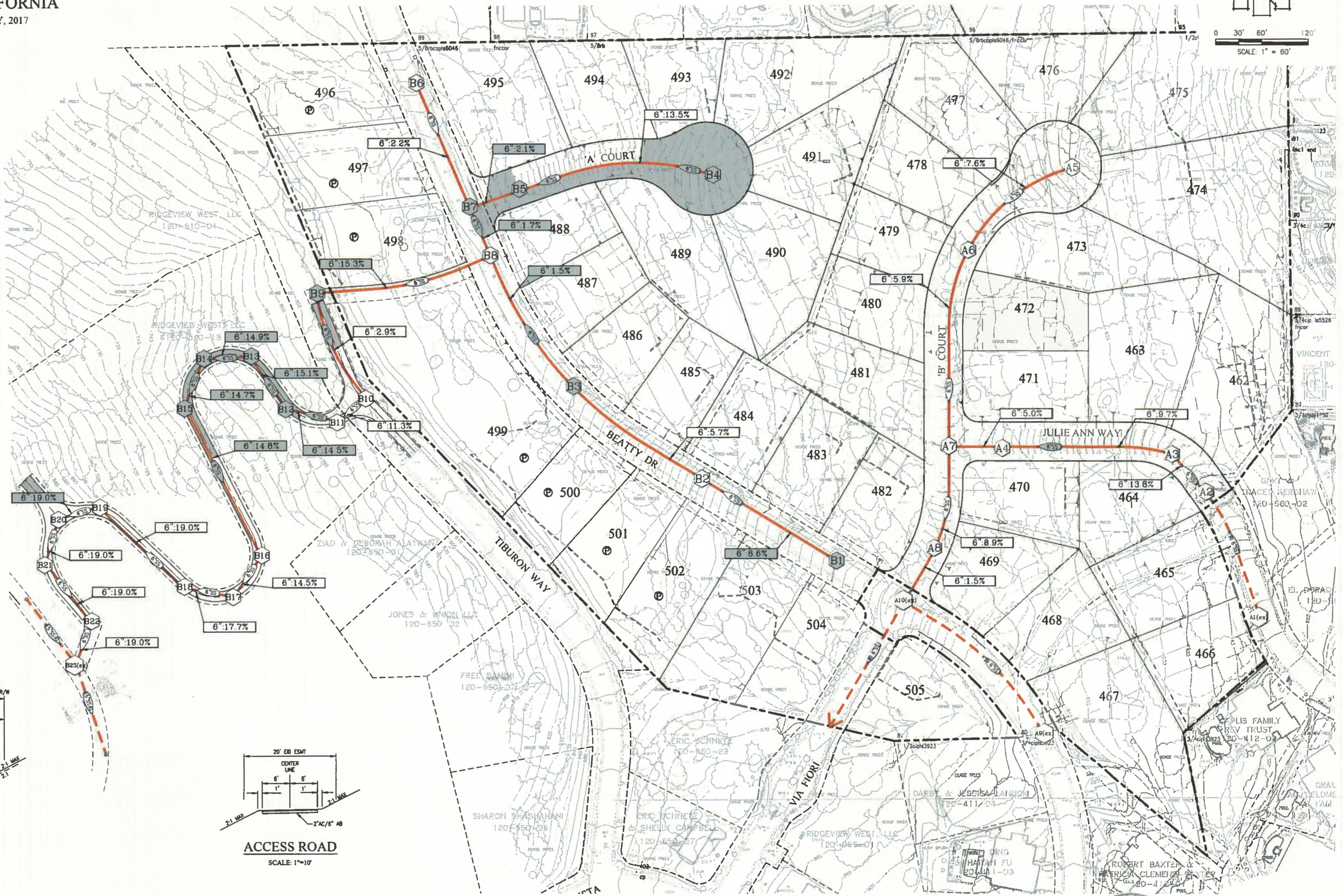
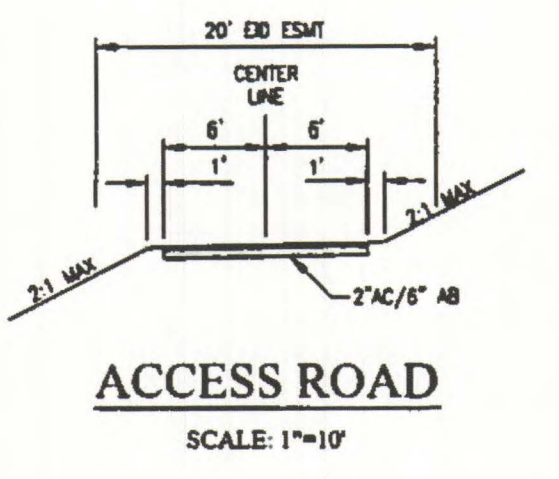
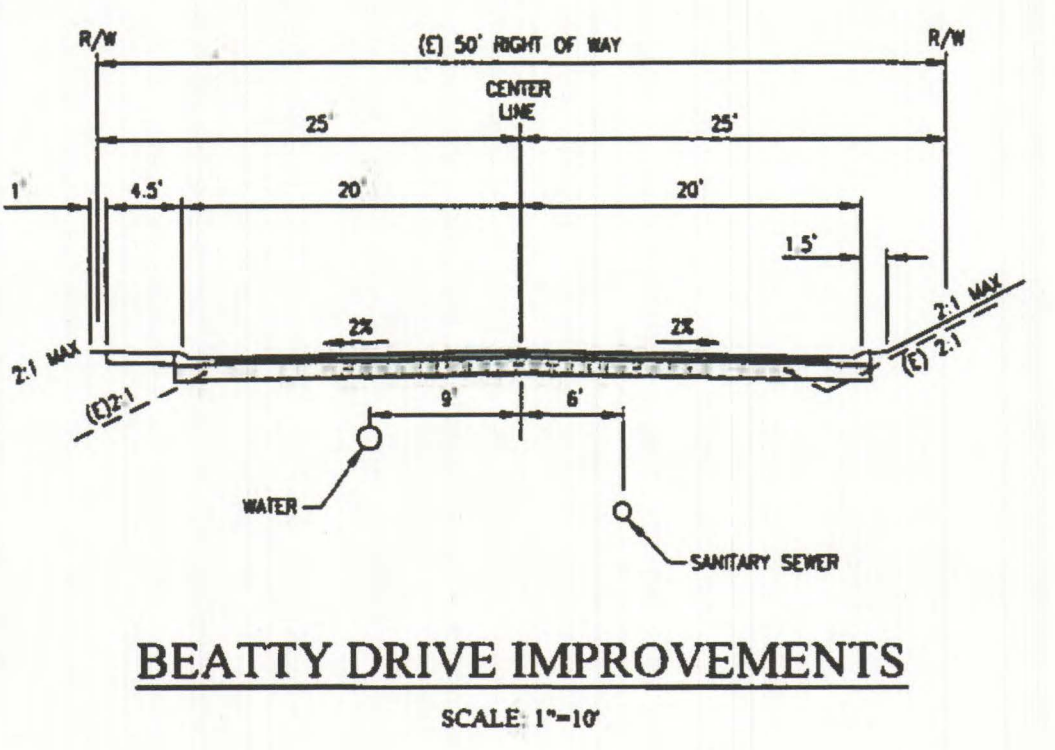
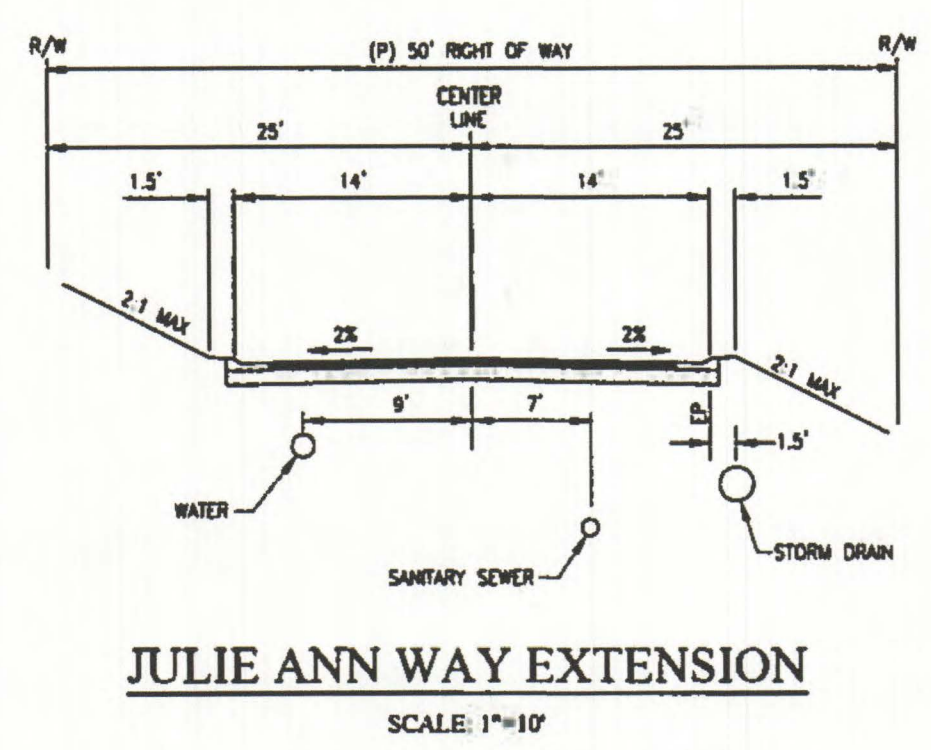
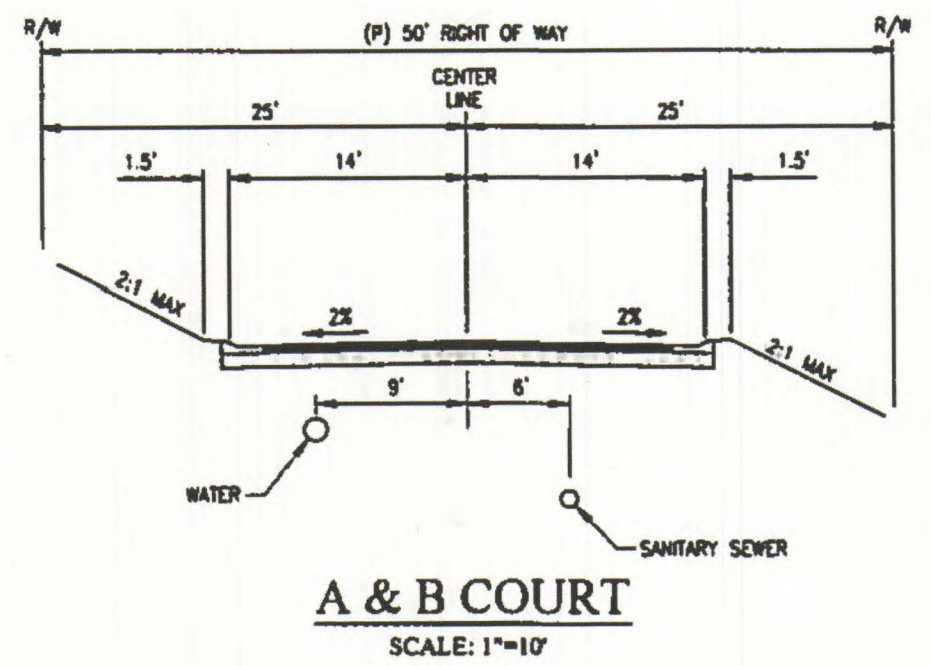
### EL DORADO COUNTY, CALIFORNIA

SCALE: 1"=60' JULY, 2017



**LEGEND**

- EXISTING SEWER
- PROPOSED SEWER
- NODE POINT
- PROPOSED PIPE DATA
- BOUNDARY LINE
- PROPERTY LINE
- PUMPED SEWER SERVICE



APPROVED  
EL DORADO COUNTY  
PLANNING COMMISSION  
DATE: *October 24, 2017*  
BY: *Tiffany Schmid*  
EXECUTIVE SECRETARY

**cta** Engineering & Surveying  
Civil Engineering ■ Land Surveying ■ Land Planning  
3233 Monier Circle, Rancho Cordova, CA 95742  
T (916) 638-0919 ■ F (916) 638-2478 ■ www.ctaes.com

# RIDGEVIEW UNIT 9

## OFFSITE SEWER THROUGH VILLADORO HOA LOT B

EL DORADO HILLS, CALIFORNIA

SCALE: 1"=50'

OCTOBER, 2017



0 25' 50' 100'  
SCALE: 1" = 50'



APPROVED  
EL DORADO COUNTY  
PLANNING COMMISSION

DATE: October 24, 2017

BY: *Ernst Schmid / gcs*  
EXECUTIVE SECRETARY

**cta** Engineering & Surveying



Civil Engineering ■ Land Surveying ■ Land Planning  
3233 Monier Circle, Rancho Cordova, CA 95742  
T (916) 638-0919 ■ F (916) 638-2479 ■ www.ctaes.net

# RIDGEVIEW VILLAGE UNIT 9

## OFF-SITE SEWER THROUGH VILLADORO HOA LOT B (RIDGEVIEW WEST) TREE PRESERVATION ANALYSIS

EL DORADO COUNTY, CALIFORNIA  
 SCALE: 1"=40' JANUARY, 2019

### LEGEND

- CANOPY TO REMAIN (1996) 
- CANOPY TO BE REMOVED (2019) FOR RIDGEVIEW UNIT 9 OFF-SITE SEWER 

### PROJECT AREA

RIDGEVIEW WEST LOT B:	347,653 SF
TOTAL CANOPY (1996):	196,518 SF
CANOPY REMOVAL (2019):	19,870 SF

### DISTURBED AREA

OFF-SITE SEWER LOT B:	1.2 AC
-----------------------	--------

### PROJECT NOTES

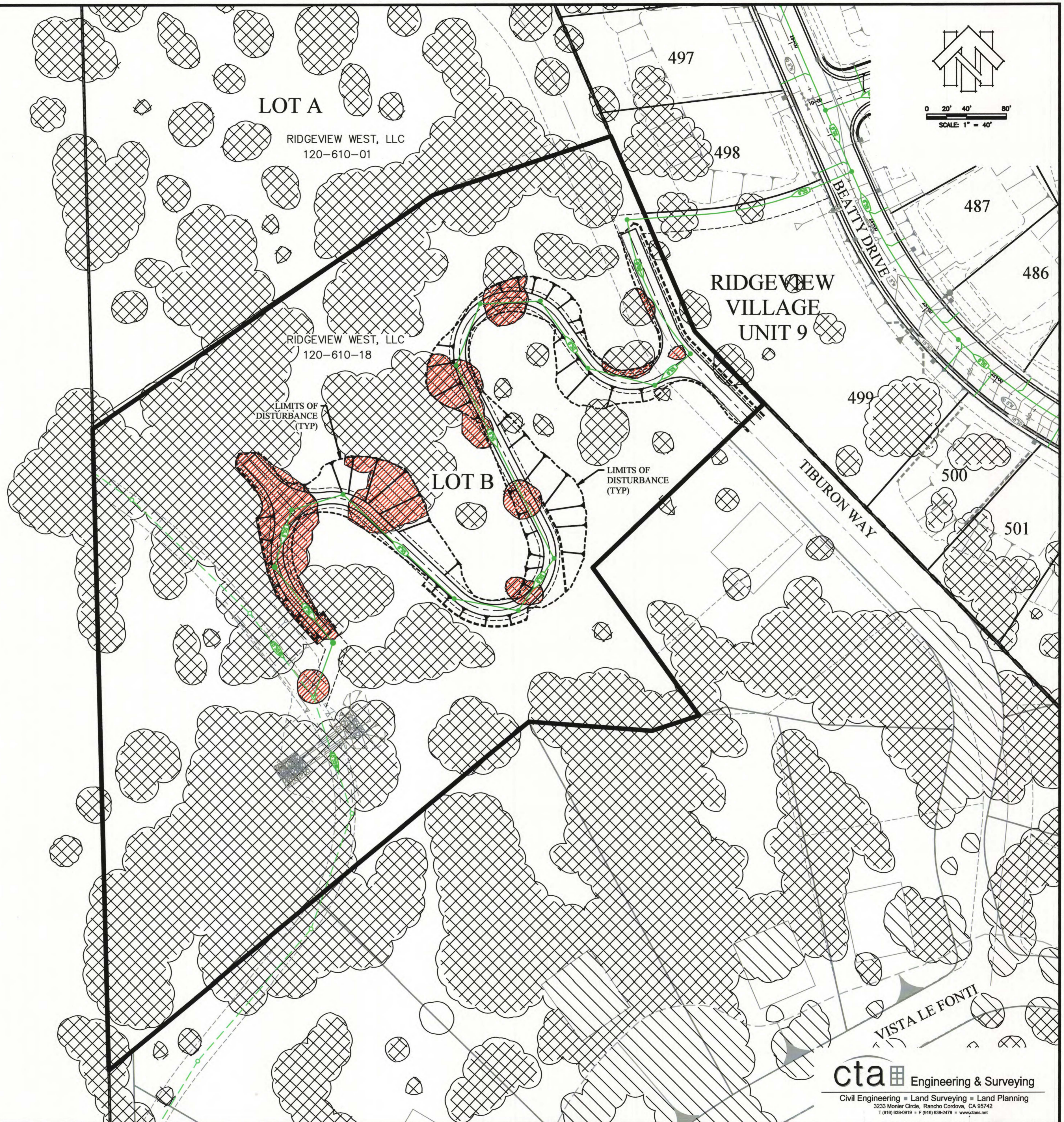
FROM STAFF REPORT, PAGE 8, FILE NO. 295-21/PD95-15/TM95-1309 RIDGEVIEW WEST, DATED JULY 11, 1996, ACCORDING TO POLICY 7.4.4.4, SINCE 80% OF THE TREE CANOPY IS RETAINED, A REPLACEMENT PLAN IS NOT NECESSARY. RIDGEVIEW WEST IS CONSISTENT WITH BOTH POLICIES 7.4.4.4 & 7.4.5.1.

### REFERENCE

\*CANOPY SHOWN IS FROM THE TREE PRESERVATION PLAN FOR RIDGEVIEW WEST, MARCH 1996

### TREE PRESERVATION PLAN ANALYSIS

- \*RIDGEVIEW WEST - JULY 1996
- \*REMOVE CANOPY (1996) 360,220 SF
- \*REMOVE CANOPY (2019) 19,870 SF
- \*TOTAL PROJECT CANOPY (1996) 2,076,647 SF
- \*ORIGINAL CANOPY TO BE REMOVED IS 17% (1996)
- \*CURRENT TOTAL CANOPY REMOVAL IS 18% (2019)
- \*PROPOSED CANOPY TO BE RETAINED IS 82% (2019)
- THEREFORE SHOULD NOT REQUIRE MITIGATION (1996)



**cta** Engineering & Surveying  
 Civil Engineering • Land Surveying • Land Planning  
 3233 Monier Circle, Rancho Cordova, CA 95742  
 T (916) 638-0919 • F (916) 638-2479 • www.cta-es.net

EXHIBIT N

APPROVED  
 EL DORADO COUNTY  
 PLANNING COMMISSION  
 DATE: October 24, 2019  
 BY: *Tiffany Schmid Jones*  
 EXECUTIVE SECRETARY