

[Donate Today!](#)

**Feed your caterpillars!**  
**Sign-up here for free milkweeds!**

**Fill out our survey to  
Feed your caterpillars!**

# Sierra Foothill Monarch Rescue Pollinator Flyway Corridor Project



**Sign-up:** [www.SierraMonarchRescue.com](http://www.SierraMonarchRescue.com)

Take our survey



# Sierra Foothill Pollinator Flyway Restoration

## Problem:



Improve the Monarch and Pollinator populations in Sierra Foothills






## Solution:



Quickly create hundreds of nourishing quality managed pollinator habitats to reduce the flying distance and connect to larger WCB habitat restorations

# Sierra Foothill Monarch and Pollinator Flyway Network

## Conservation Goals over 5 years:

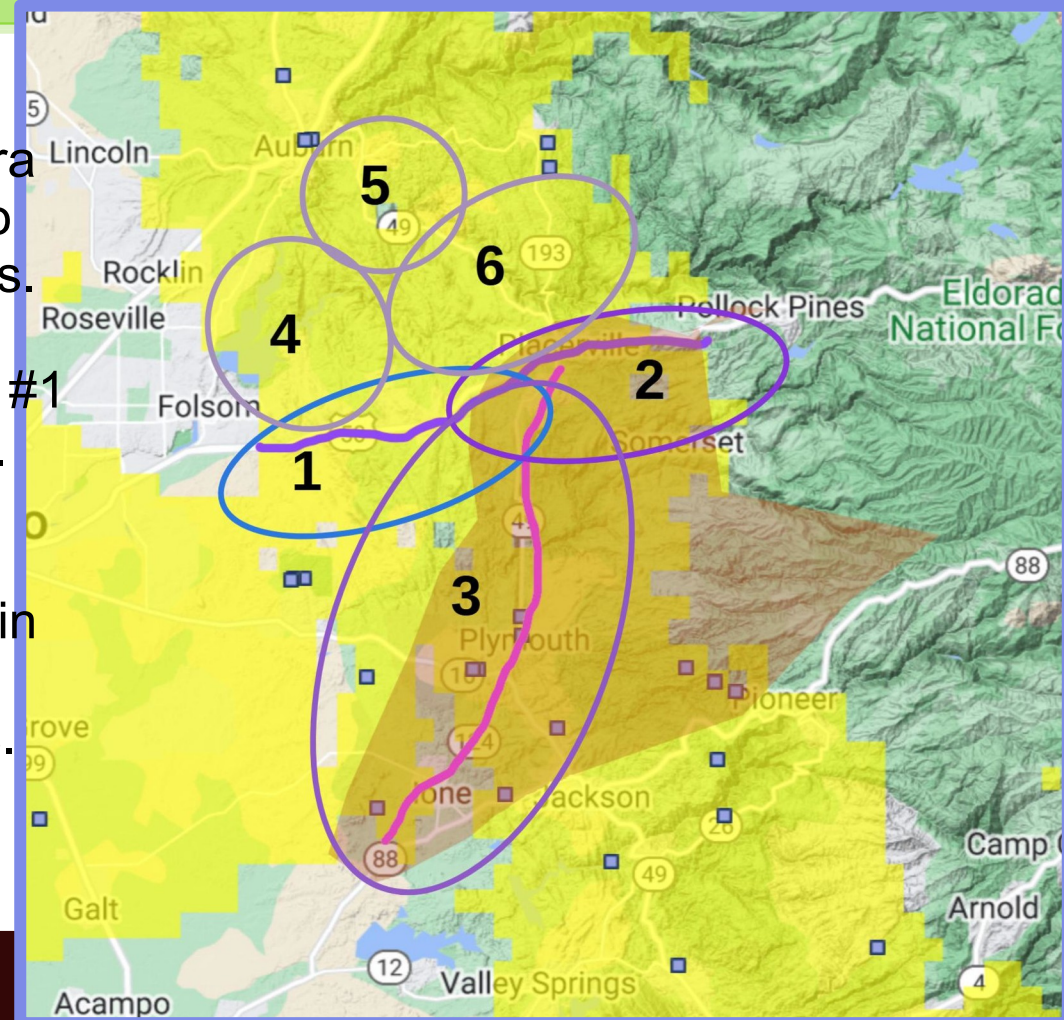
-  Restore Monarch and Pollinator Connectivity Habitats across **32+ miles** of the Sierra Foothills
-  Enhance a min. of **75 non-contiguous ac** of BMH on Public and Private Lands
-  **30% participation** in Disadvantaged communities
-  Partner with up to **300 private land managers** including farms and ranches
-  Engage a min. of **300 volunteers for Waystation** implementation and IMMP monitoring

# Sierra Foothill Monarch and Pollinator Flyway Network

✈️ Connects Priority #1 and Priority #2 Sierra Foothill Breeding and Migratory Habitats to early breeding Central Valley WCB projects.

✈️ Zone #3 connects Amador to the Priority #1 and #2 summer BMH in El Dorado County.


✈️ Encourages stewardship in the Disadvantaged Community Census tracts in El Dorado and Amador counties, Zone #3 connecting to Central Valley WCB projects.



# Tracking progress with Po-go.net

**Data Collection over the decades has been sparse in Sierra Foothills**

**Solution: Po-go = Pollinators on the Go**

 Allows tracking progress of Waystation site installations by Citizen Scientists and Schools including: registration, baseline survey, implementation, maintenance and monitoring



# Nisenan Village Pollinator Demonstration Garden

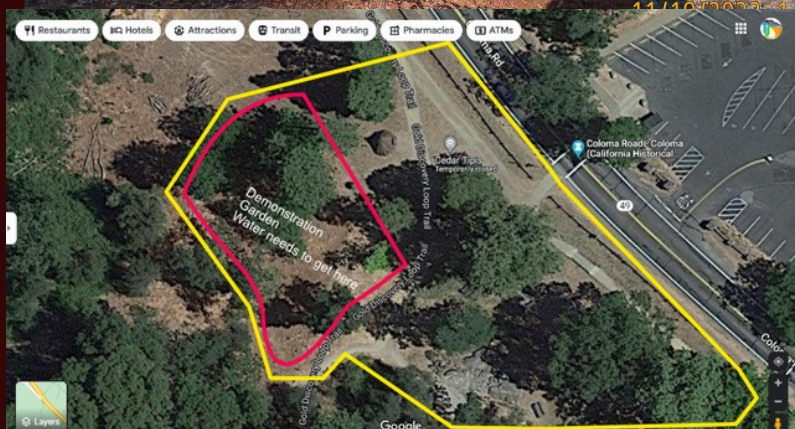


## Marshall Gold Discovery State Park

70,000 visitors a year

400-1000 elementary students per day in the spring

Louie Smith, III gives blessing and thanks to the volunteers and the Nisenan Native Medicine Garden.



Help us with our  
“in kind” match:

- Volunteer
- Donate to us:
  - Land
  - Vehicles
  - Computers, tablets
  - Soil from cannabis grows
  - Nursery Supplies
  - Gopher cages
  - Milkweed Seeds
  - Native Plant Seeds





A monarch caterpillar with yellow, black, and white stripes is shown eating a green milkweed leaf. The background is a clear blue sky. Four callout boxes with lines pointing to specific areas of the image contain text: an orange box at the top right, a yellow box in the center, and two purple boxes at the bottom.

**Feed your caterpillars!**  
**Sign-up here for free milkweeds!**

[Donate Today!](#)

**Fill out our survey to  
Feed your caterpillars!**

Sign-up to get your milkweed  
and be on our list for a  
Monarch Waystation install

Donate to us:  
Dollars, computers, land, vehicles,