

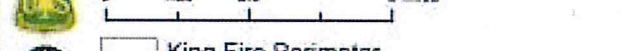


El Dorado County &  
Georgetown Divide

Resource  
Conservation  
Districts

**USDA King Fire CA-ENF-023461 BAER**

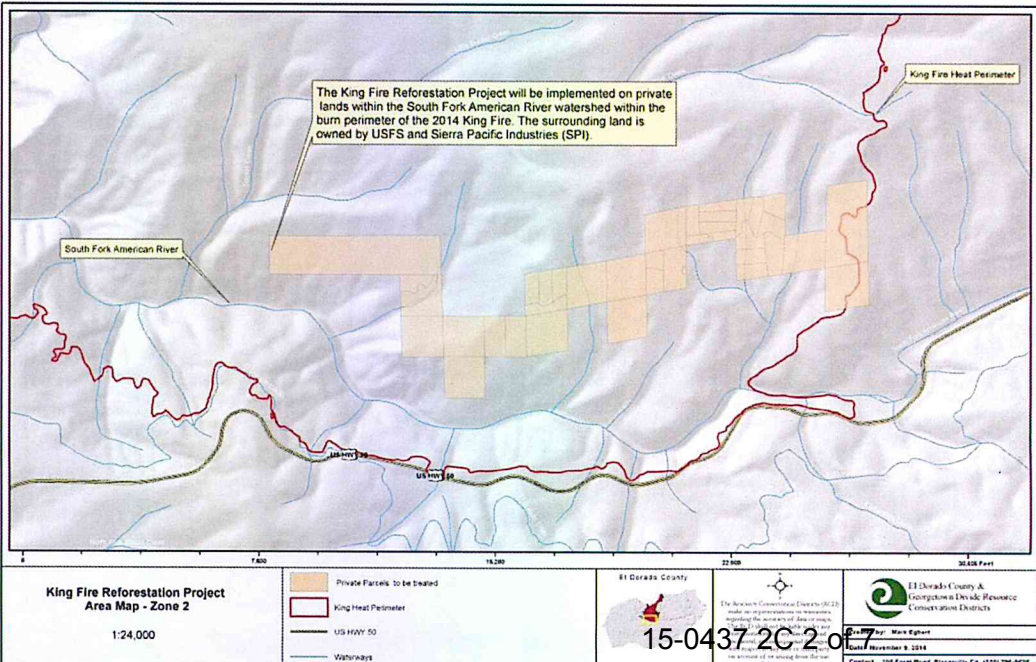
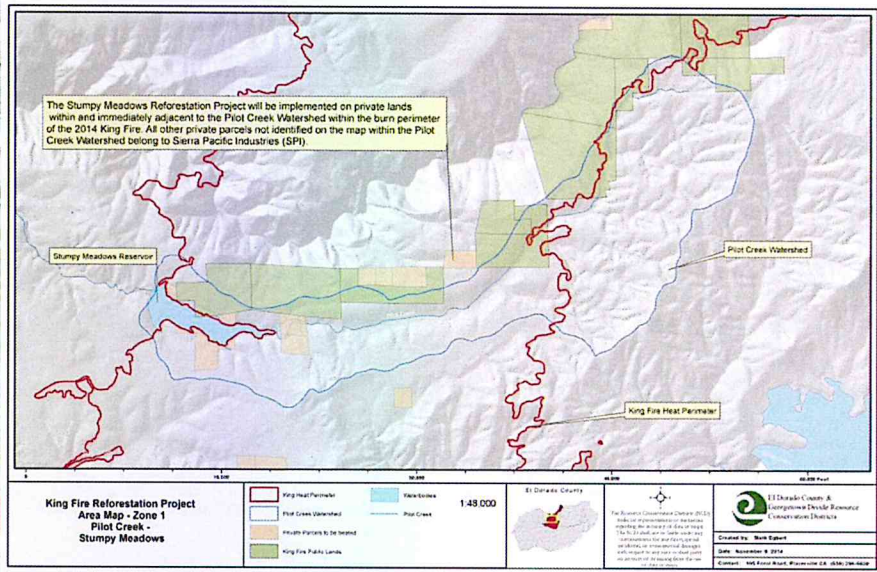
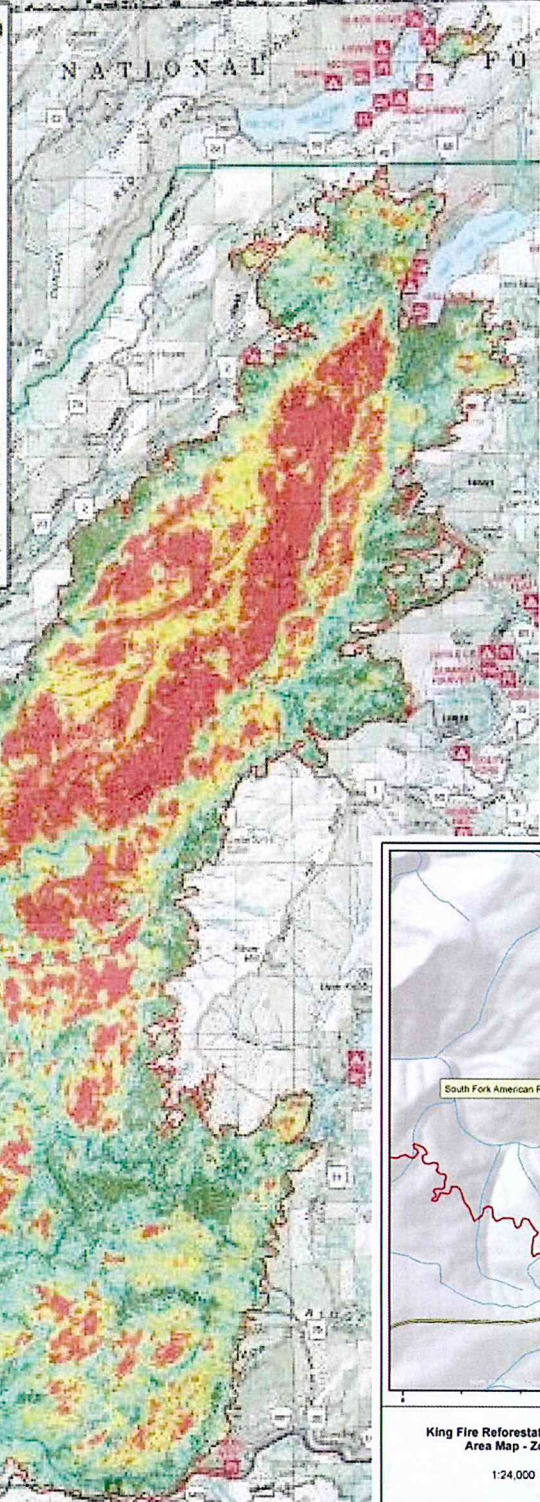
Pacific Southwest Region Enderbald National Forest

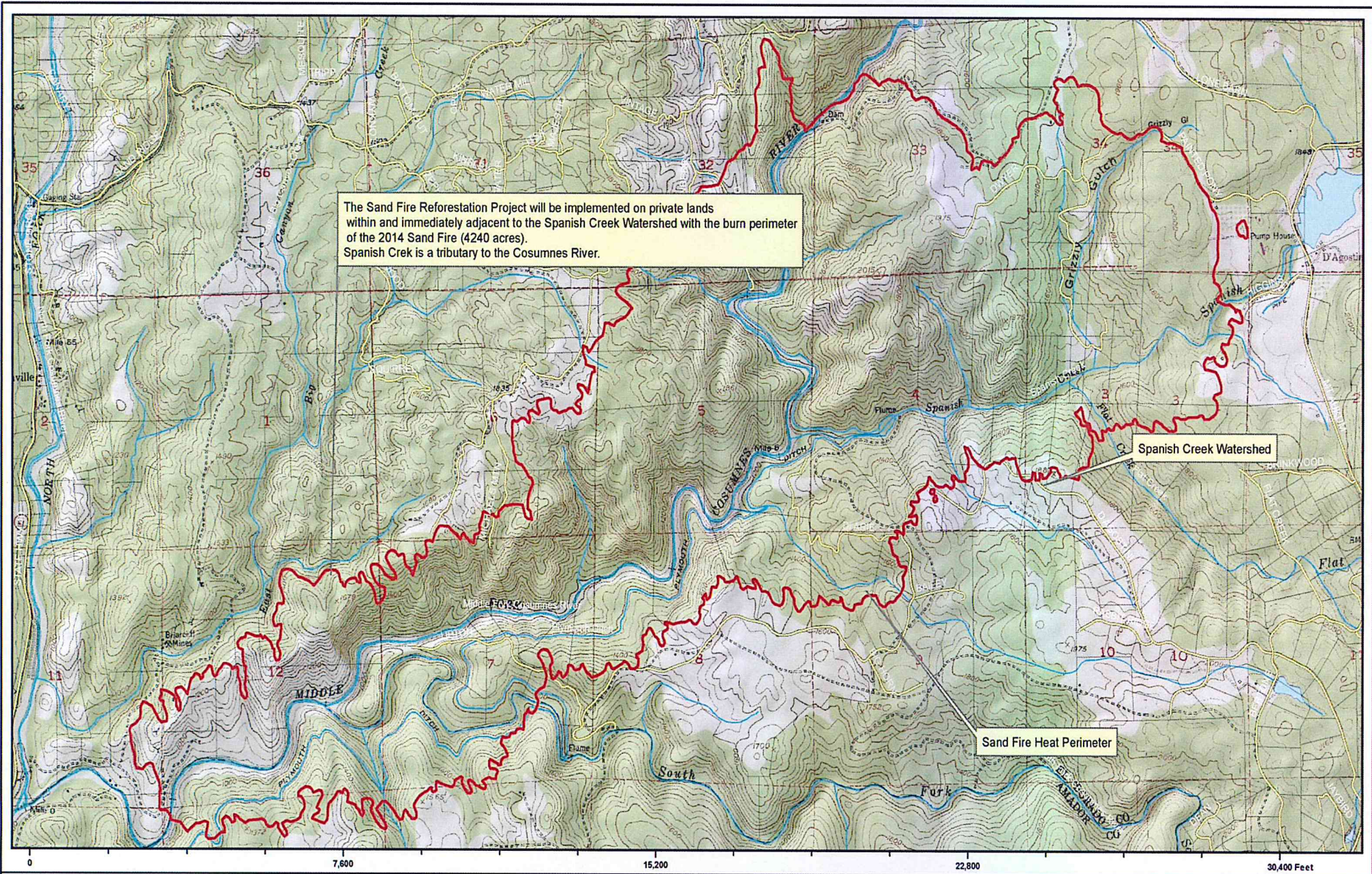


King Fire Perimeter



**DISCLAIMER:**  
This Soil Burn Severity (SBS) map is a product of BAER rapid assessment that it is not intended to be 100% accurate and that data represented is approximate in nature. The map is based upon satellite imagery, and then field verified and modified as necessary by the BAER soils team. The primary purpose of this map is for general soil restoration response planning. **NOT** for assessing vegetation impacts of the fire (RANG mapping derived from the same imagery is better suited for this purpose), that soil one may assume "yellow and orange = entirely dead". Above-ground and below-ground effects of the fire often differ substantially; thus above-ground appearance and what are in soil necessarily make poor indicators of below-ground SBS.  
  
Data users are cautioned to be aware and carefully consider the provisional nature of the information before using it for decisions that concern people or public safety or the conduct of business that make the subsequent recovery or operational response periods. Further information concerning the accuracy and appropriate uses of these data may be obtained from the National Geospatial-Intelligence Agency at (301) 291-2706 ext. 210018.





### Sand Fire Reforestation Project Area Map

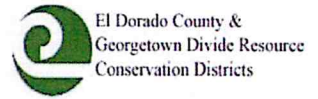
- Sand Fire Perimeter
- Waterbodies
- County Roads
- Waterways
- Parcel Map

1:24,000

El Dorado County



The Resource Conservation Districts (RCD) make no representations or warranties regarding the accuracy of data or maps. The RCD shall not be liable under any circumstances for any direct, special, incidental, or consequential damages with respect to any user or third party on account of or arising from the use of data or maps.



Created by: Mark Egbert  
 Date: November 17, 2014  
 El Dorado County Board of Supervisors, 150437263rd St, Colusa, CA (530) 295-5630

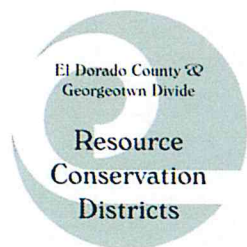


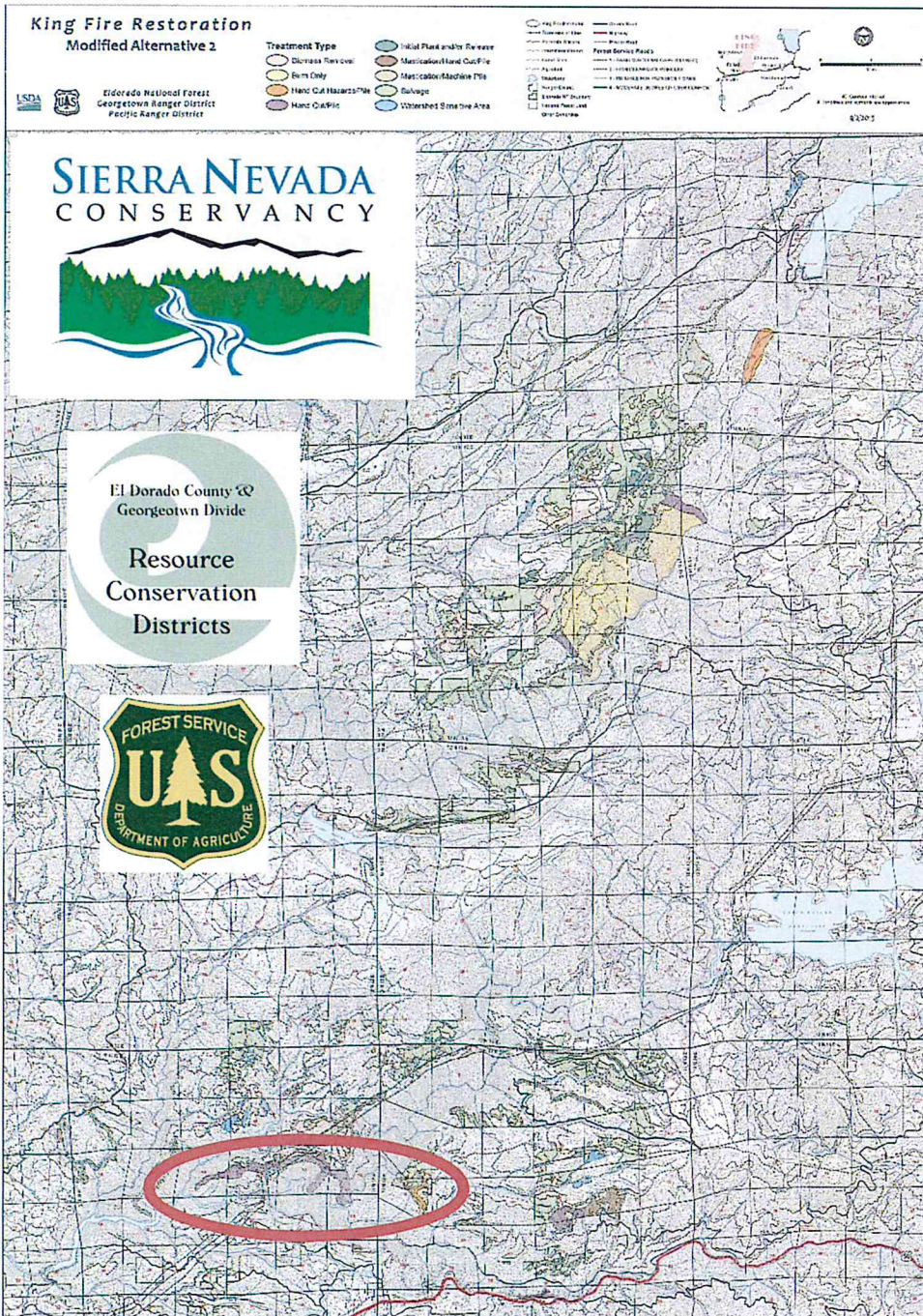
## -Fire Adapted 50

### ➤ *Sly Park Phase -*

- We will expand the established shaded fuel break to connect to Highway 50 and Forest Service land along Sly Park Road.
- **972,000.00** Interagency Agreement pending.

- **Fire Adapted 50** will reach out and involve all property owners and stakeholders who will benefit from these projects to maximize efficiency of the work being performed.
- As **Fire Adapted 50** gets underway, a collaborative group of many more organizations will be developed to expand this work.
- **Fire Adapted 50** will help us achieve the shared goals of Fire Adapted Communities, Resilient Landscapes, and Safe / Effective Wildfire Response which together will create a Cohesive Strategy to protect the high value landscape and citizens which surround Highway 50.





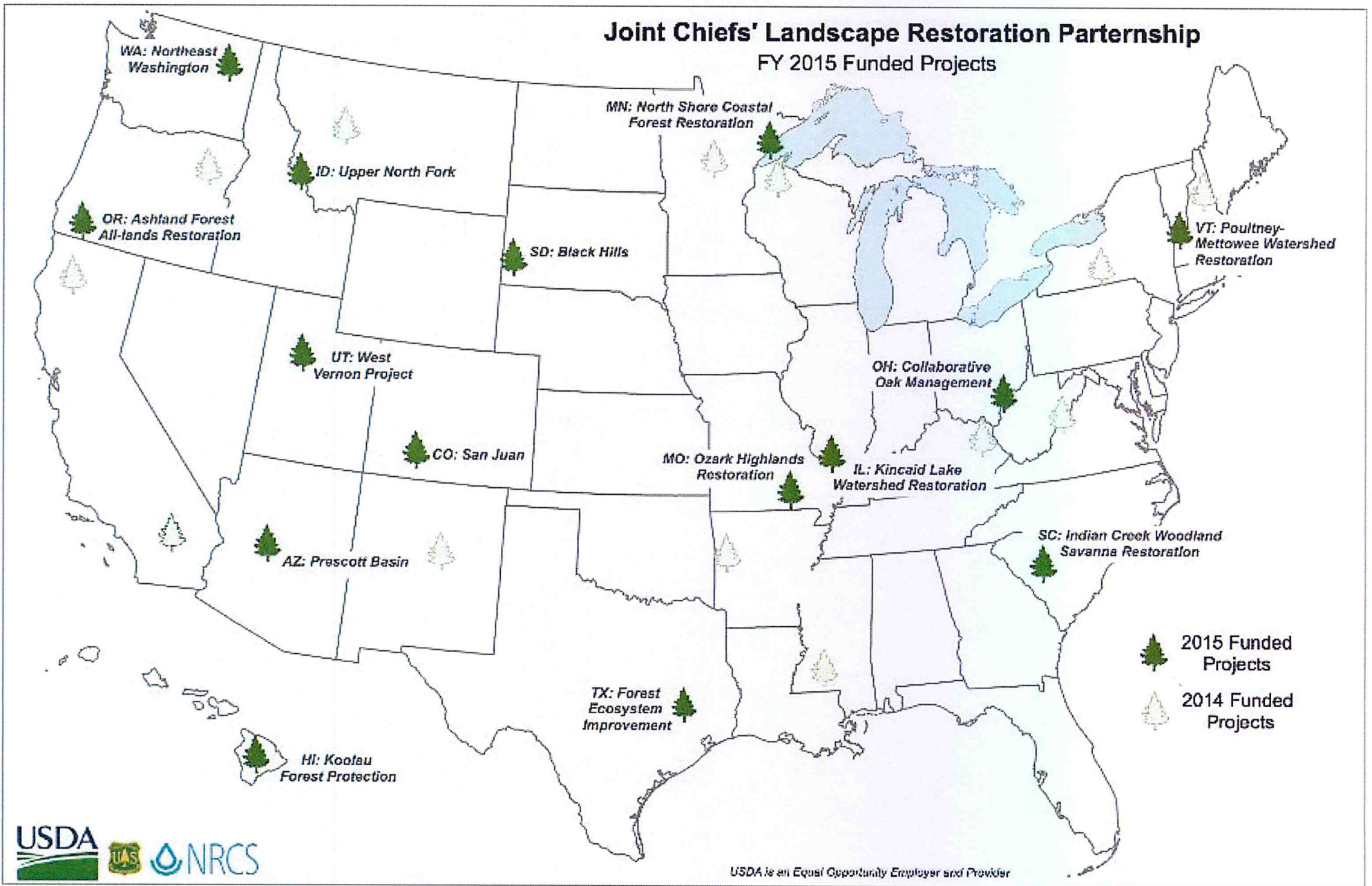
Sierra forests are the source of most of California’s water. Projects reduce the risk of large damaging wildfires that threaten communities, water reliability, and quality for Californians, and at the same time, create much needed jobs. The health of the watershed is directly linked to the quality and amount of water that flows through the Region and downstream. Much of the water that flows to the Delta originates in the Sierra Nevada; the Delta, as well as other important water systems in the state, depends on the quantity, quality, and timing of water from the Sierra.

Watershed Planning & Management is a collaborative and long-term commitment.

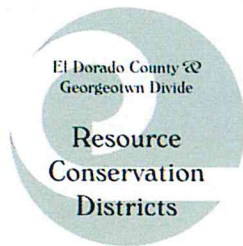
The RCD is a key local partner to realize public and private lands are included in implementation.

# Joint Chiefs' Landscape Restoration Partnership

FY 2015 Funded Projects



USDA is an Equal Opportunity Employer and Provider



## Summary

- **King Fire Restoration & Reforestation Project: \$1.9 million.**
- **Sand Fire Restoration & Reforestation Project: \$800,000.00.**
- **As Fire Adapted 50: \$972,000.00.**
- **Sierra Nevada Conservancy Prop 1 Application: \$500,000.00.**
- **2016/17 Joint Chiefs Initiative.**
- The RCD, USFS, CALFIRE, SPI, EID, SMUD, SNC, NRCS, County of El Dorado and others have a long standing relationship that will enable us to implement the projects that have received funding.
- This collaborative framework will also enable us to leverage additional resources to future projects.
- The RCD, under mutual benefit and interest, is working with County Departments to ensure financial securities are in place to allow us the ability to finance these reimbursable contracts. While these grants are a benefit to the residents of the county, we have to be secure in our ability to administer these projects without cash flow difficulties.
- Cash flow deficits are projected for fiscal years 2016-2019.