

ADD "SHERIFF JOHN D'AGOSTINI PUBLIC SAFETY FACILITY"  
"EL DORADO COUNTY SHERIFF'S OFFICE" REMAINS

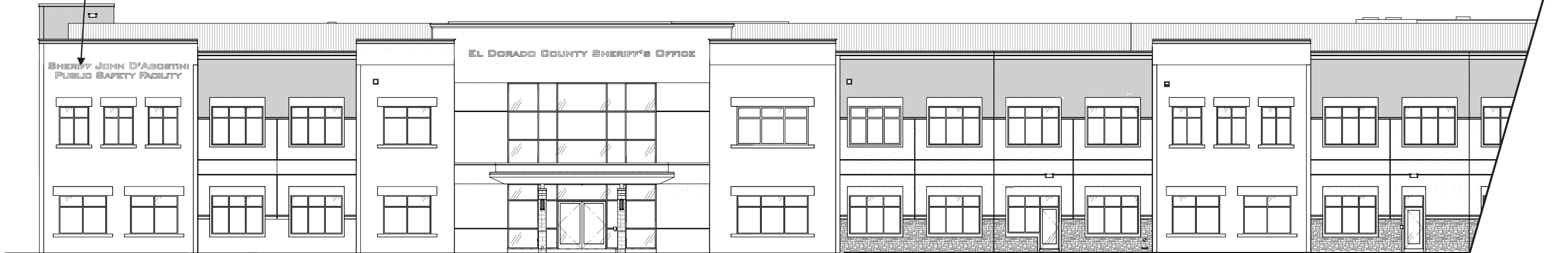
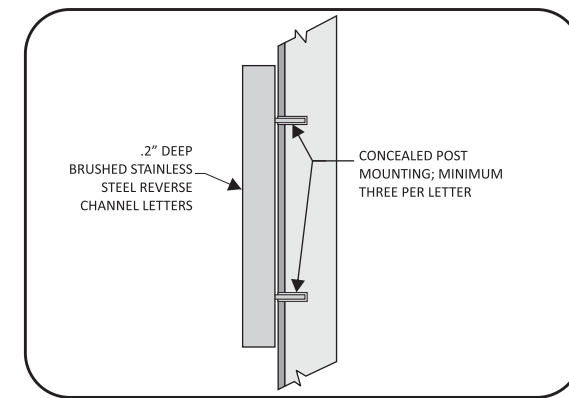


SCALE 3/8" = 1' - 0"

FONT: BANK GOTHIC MD BT

**MANUFACTURE AND INSTALL**  
 ONE SET OF 12" TALL BRUSHED STAINLESS STEEL REVERSE CHANNEL LETTERS  
 2" RETURNS  
 CONCEALED POST MOUNTING  
 CENTERED IN FASCIA AS SHOWN

**FIELD SURVEY REQUIRED  
 PRIOR TO FABRICATION**



SCALE 1/16" = 1' - 0"



**WESTERN  
SIGN COMPANY**

SINCE 1959

6221 ENTERPRISE DRIVE, DIAMOND SPRINGS, CA 95619

Phone 916.933-3765 • 530.622-1420 Fax 530.622-9367  
 E-Mail design@westernsign.com Website www.westernsign.com

SALESPERSON Todd Johnston  
 ILLUSTRATION Perry Wilson  
 LOCATION Placerville, CA  
 DATE 01/26/23  
 REVISED 01/27/23  
 02/01/23  
 02/02/23

CUSTOMER APPROVAL \_\_\_\_\_ DATE \_\_\_\_\_

COLORS ON THIS PRINTOUT MAY VARY SLIGHTLY FROM FINAL MATERIALS COLORS. APPROVAL OF THIS ILLUSTRATION INCLUDES APPROVAL OF THE FINAL MATERIALS COLORS AS DESCRIBED IN THE WRITTEN CALLOUT. WRITTEN DIMENSIONS ON THIS ILLUSTRATION HAVE PRECEDENCE OVER SCALED DIMENSIONS. ILLUSTRATIONS SHOWING BUILDING ELEVATIONS ARE CONCEPTUAL AND TO APPROXIMATE SCALE ONLY. THEY ARE NOT TO BE CONSIDERED AN EXACT IMAGE OF HOW THE FINISHED SIGN WILL APPEAR. THIS IS AN ORIGINAL UNPUBLISHED DRAWING CREATED BY WESTERN SIGN CO., INC. IT IS SUBMITTED FOR YOUR APPROVAL. IT IS NOT TO BE SHOWN TO ANYONE OUTSIDE YOUR ORGANIZATION NOR IS IT TO BE REPRODUCED, COPIED OR EXHIBITED IN ANY FASHION WITHOUT EXPRESSED WRITTEN PERMISSION OF WESTERN SIGN CO., INC.

LANDLORD APPROVAL \_\_\_\_\_ DATE \_\_\_\_\_

SALESPERSON SIGNOFF \_\_\_\_\_ DATE \_\_\_\_\_

