



HISTORICAL MUSEUM COMMISSION OVERVIEW 2024

PRESENTED TO THE BOARD OF
SUPERVISORS ON NOVEMBER 5, 2024

HISTORICAL MUSEUM COMMISSION MISSION

The function of the Historical Museum Commission is to represent the community regarding museum issues and to serve as a liaison with the El Dorado County Board of Supervisors

The Museum's mission is to accept, preserve, and interpret artifacts and archival materials relating to the history of El Dorado County.

- The County Museum's main facility is at 104 Placerville Drive, next to the Fairgrounds
- The El Dorado Western Railroad, the County Museum's "living history program" has facilities at the El Dorado Station (4650 Oriental St.) and Shingle Springs Depot (4241 Mother Lode Dr)
- Off-site archival storage in the basement of the Library (345 Fair Lane)



COMMISSION MEMBERSHIP

Seven members appointed by the Board of Supervisors “at large,” with two members representing established historical organizations.

As of July 1, 2024 the Commissioners are:

- Jeannette Barrett, Chairman
- Dee Owens, Vice Chairman
- Keith Berry, Commissioner
- Frank Jacobi, Commissioner
- Sean Manwaring, Commissioner
- Jacob Rigoli, Commissioner
- One vacancy



El Dorado Western Railroad, preserving our railroad history

WHAT WE DO?

- Recommend museum policies
- Recommend to accept or reject artifact donations
- Represent the museum in other forums
- Make strategic planning recommendations
- Make budget and funding recommendations



Aunt Polly Gray's chair from her overland trip to El Dorado in 1854

SERVICE AND PERFORMANCE INDICATORS

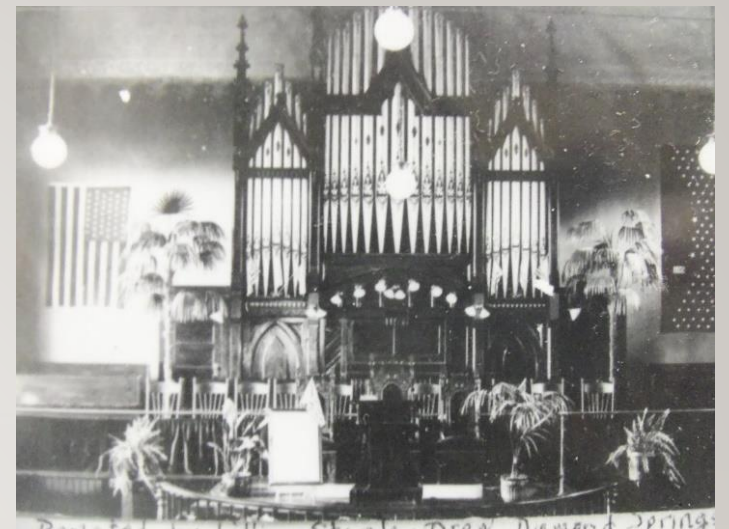
- Following the acquisition guidelines recommended for adoption by the Commission, the Museum accepted into the collection in 2024:
 - Square Dance dress from the Hangtown Twirlers
 - Collection of original photographs taken in Caldor in the early 1900s
 - Reproduction uniform of the first Supervisor of the El Dorado National Forest
 - Framed photographs of the Seth Beach family
 - Native American beads acquired over 50 years ago in the Mosquito area
 - Polly Gray's chair used in the wagon train from Illinois to El Dorado in 1854



Ursula Vorhees wearing her Square-Dancing Dress in 1947 in Cedar Grove

SERVICE AND PERFORMANCE INDICATORS

- Bergstrom Pipe Organ – since 1960, this unique pipe organ has been located in the Organ Room of the El Dorado County Fairgrounds. The organ was originally created by a well-known Swedish organ builder in San Francisco for an Oakland Church. In 1904, the Placerville Methodist Church (now the Federated Church) purchased it and installed it in their fine brick church located where C & H Auto Parts is now.
- What makes this pipe organ so important to preserve and keep in El Dorado County?
- Museum Commission's role in developing a plan....



The Pipe Organ in the Placerville Methodist Church in 1912



The Pipe Organ in the Organ Room at the Fairgrounds now

SERVICE AND PERFORMANCE INDICATORS

- Commissioners are involved with other groups and organizations, and are the face of the Museum to their communities:
 - El Dorado County Historical Society
 - Oregon California Trails Association (OCTA)
 - Daughters of the American Revolution
 - Children of the American Revolution
 - Colonial Dames
 - El Dorado Gold 1848
- Public events, such as Golden History Day, the County Fair, the Golden Hub
- El Dorado Western Railroad



Field Talk on June 21 – The Bullion Bend Robbery

ROLE IN THE COUNTY'S STRATEGIC VISION & GOALS

2024 Strategic Plan...

Mission and Vision

County's Strategic Focus Areas:

- Safe and Healthy Communities
- Public Infrastructure
- Thriving Economy
- Workforce Excellence
- Strategic Innovation



Clearing brush along the historic rails in the County

HISTORICAL MUSEUM COMMISSION

EL DORADO COUNTY HISTORICAL MUSEUM

Located at 104 Placerville Drive
(next to the Fairgrounds)
Placerville, CA 95667

www.edcgov.us/government/museum



Open Wednesday- Sunday
12PM – 4PM



EL DORADO WESTERN RAILROAD

1st and 2nd Sundays in El Dorado, 3rd & 4th Sundays in Shingle Springs
Full-size train rides coming soon!