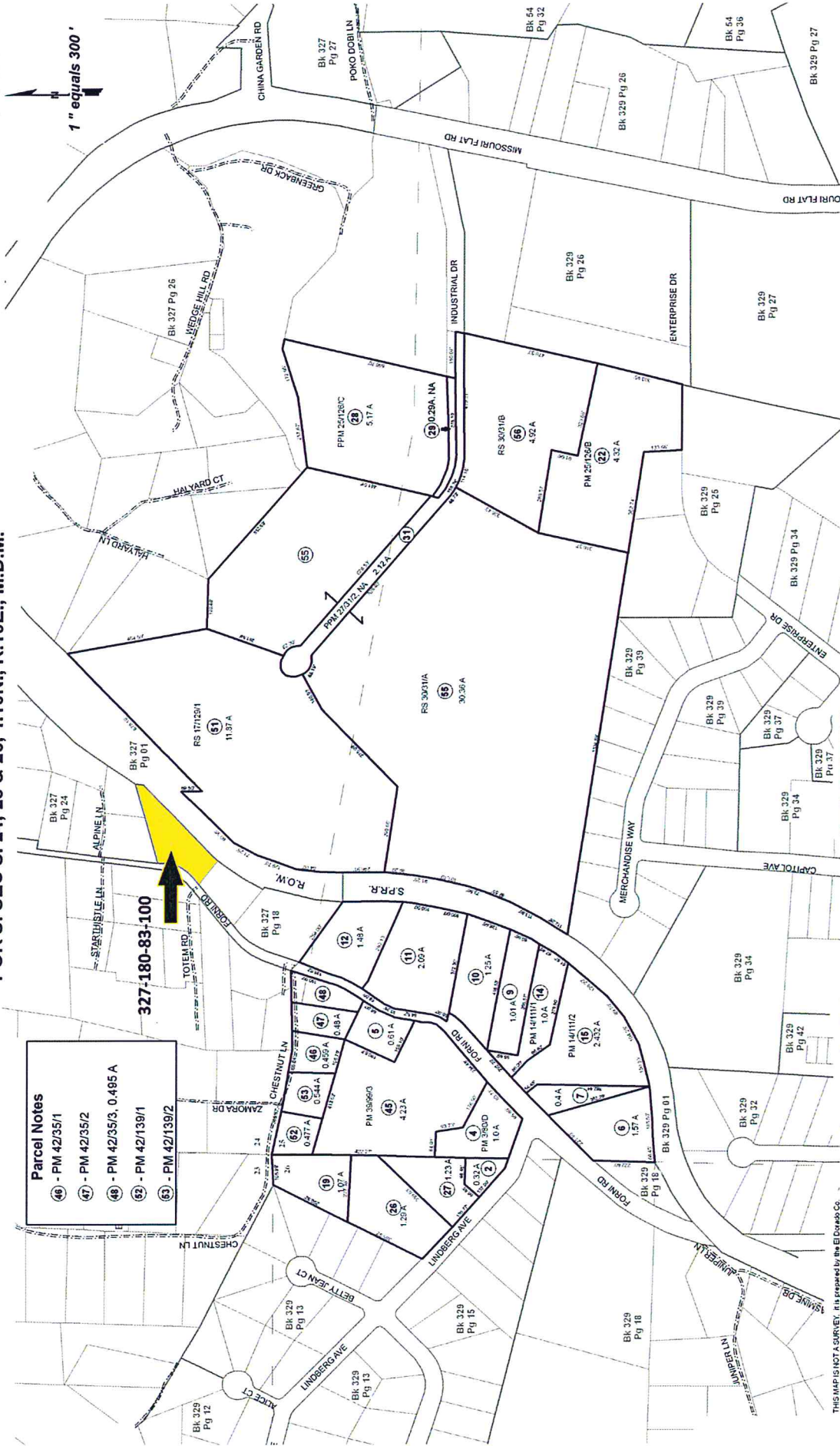


1" equals 300'

Parcel Notes	
46	- PM 42/35/1
47	- PM 42/35/2
48	- PM 42/35/3, 0.495 A
52	- PM 42/139/1
53	- PM 42/139/2

327-180-83-100



Acreages Are Estimates

THIS MAP IS NOT A SURVEY. It is prepared by the El Dorado Co. Assessor's Office. The boundaries, acreages, and characteristics are not guaranteed. Users should verify items such as dimensions and acreage.

Adjacent Map Pages Shown in Grey Text  
Assessor's Block Numbers Shown in Ellipses  
Assessor's Parcel Numbers Shown in Circles

Rev. June 14, 2007

Assessor's Map Bk. 329, Pg. 24  
County of El Dorado, CA