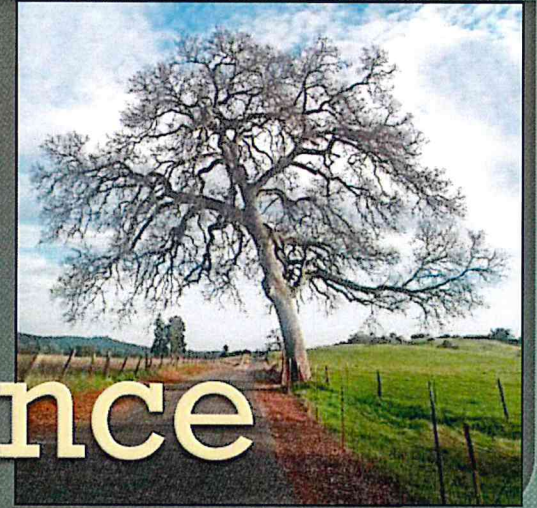


Shingle Springs Community Alliance



Conceptual Overview of the Shingle Springs Community Plan

Vision for Shingle Springs



Shingle
Springs

Why have a Community Plan?

○ Threats to Shingle Springs Community

Approved Projects:

- Community Region Lines in 2004 General Plan
- Design of high-density apartments
- Compatibility issues
- Billboards

Pending Projects:

- Tilden Park Hotel
- San Stino



○ Strong communities create economic development

**Over 200 people attend
Shingle Springs Community Meeting
January 15, 2013 at Shingle Springs Community Center**

1st Community Meeting

**Overwhelming support to keep Shingle Springs Rural
Started gathering signatures on petition**

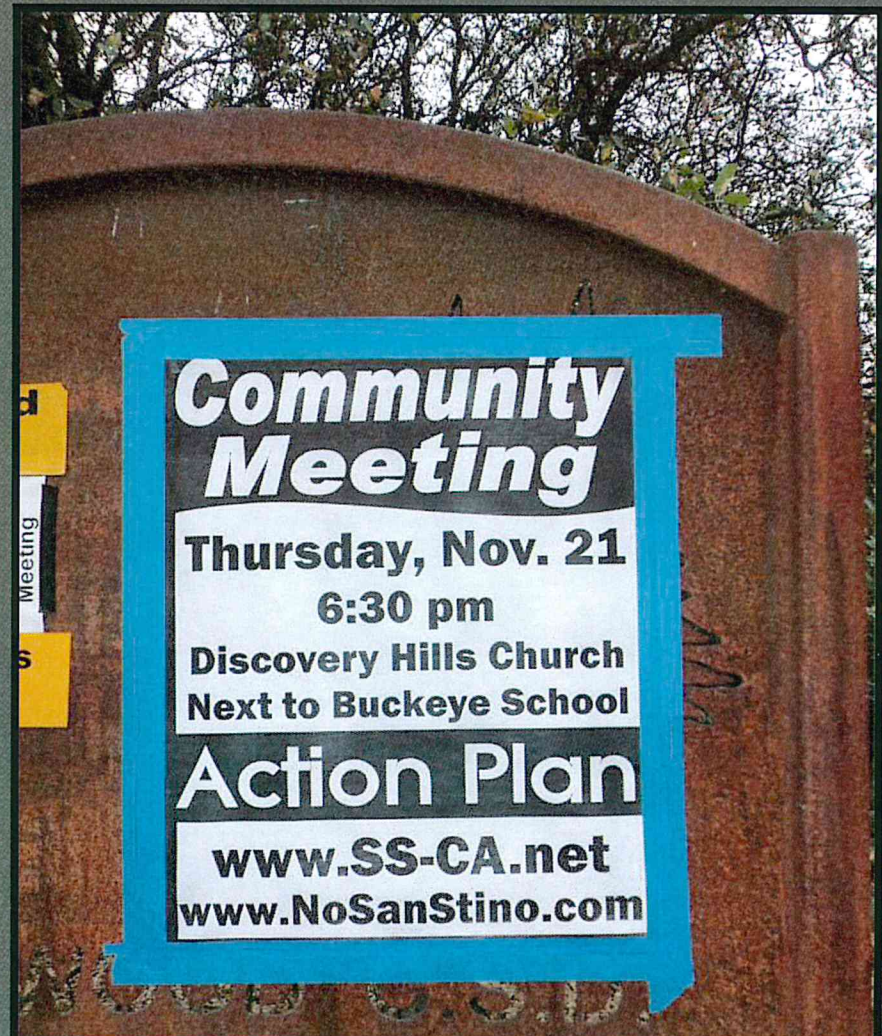
Petition to the El Dorado County Board of Supervisors

The following Petitioners ask the Board of Supervisors to:

- Remove the Shingle Springs Community Region from the General Plan and create a Shingle Springs Community Plan that will:

- Embrace and preserve existing Land Use and Zoning designations, which are a vital part of the Shingle Springs lifestyle;
- Establish the Shingle Springs Community Identity and Vision as a peaceful, country community with ranches and homes on acreage;
- Create enforceable design guidelines and a sign ordinance to make the vision clear for commercial property owners;
- Create Shingle Springs Historical Sites to preserve the History of Shingle Springs.

Community Outreach



2nd Community Meeting

Over 300 people attend
Shingle Springs Community Meeting
March 14, 2013 at Discovery Hills Church



Continued Community Outreach

3rd Community Meeting – June 5, 2013



4th Community Meeting – November 21, 2013

About 150 people attended
#1 choice of action is to continue with Community Plan



Community Outreach



Shingle Springs Community Plan Steps to Success

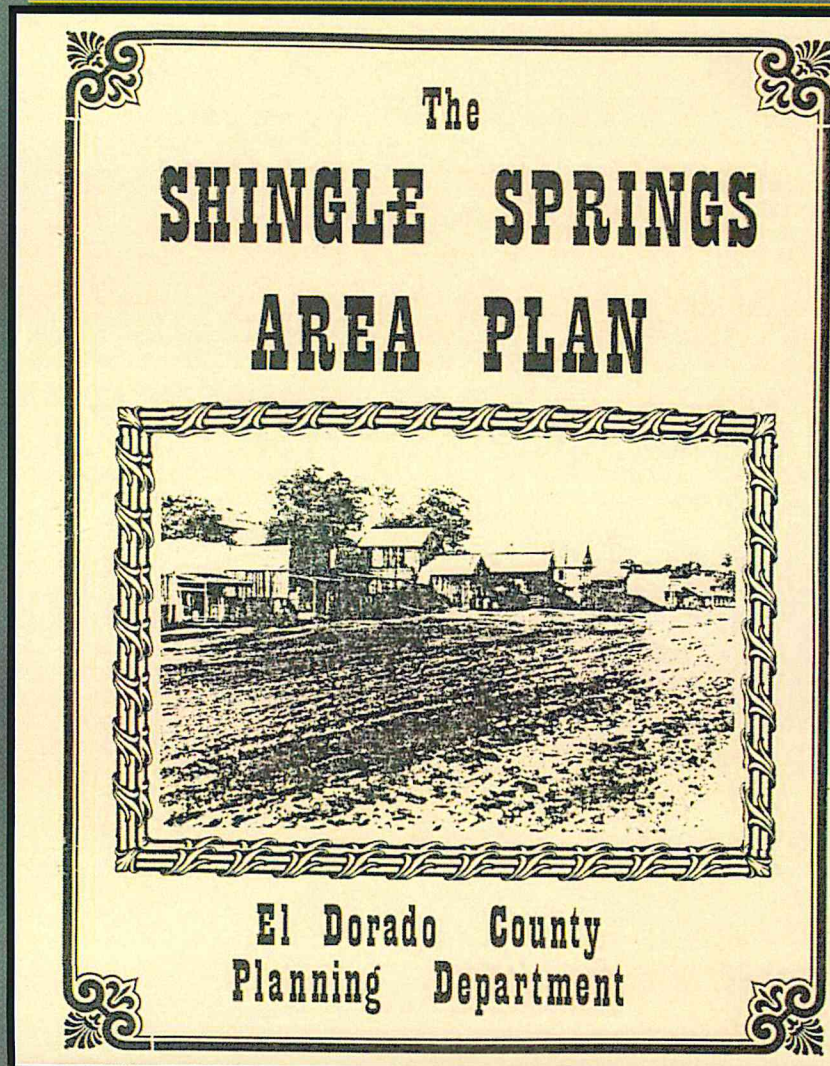
- Release first draft to public for comment
- Continue community outreach
 - Engage businesses, community organizations, interest groups, stakeholders
 - ShingleSpringsCommunityPlan.org
- Revise draft based on community input
- Present final draft to Supervisors for Adoption & Implementation in General Plan
- Ongoing check-in with Supervisors

Shingle Springs Community Plan

Key Features

Based On Community Input

Shingle Springs Community Plan Key Features

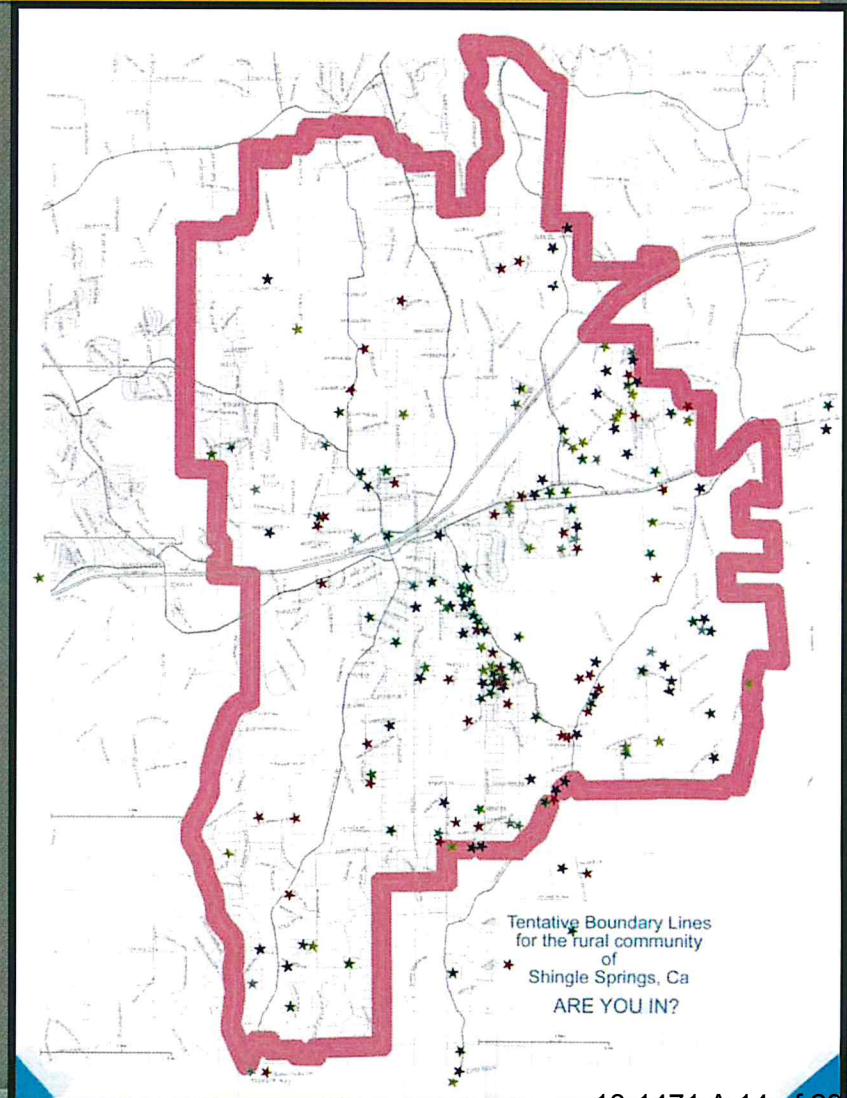


The 1977 Shingle Springs Area Plan is being used as the foundation of the new Shingle Springs Community Plan

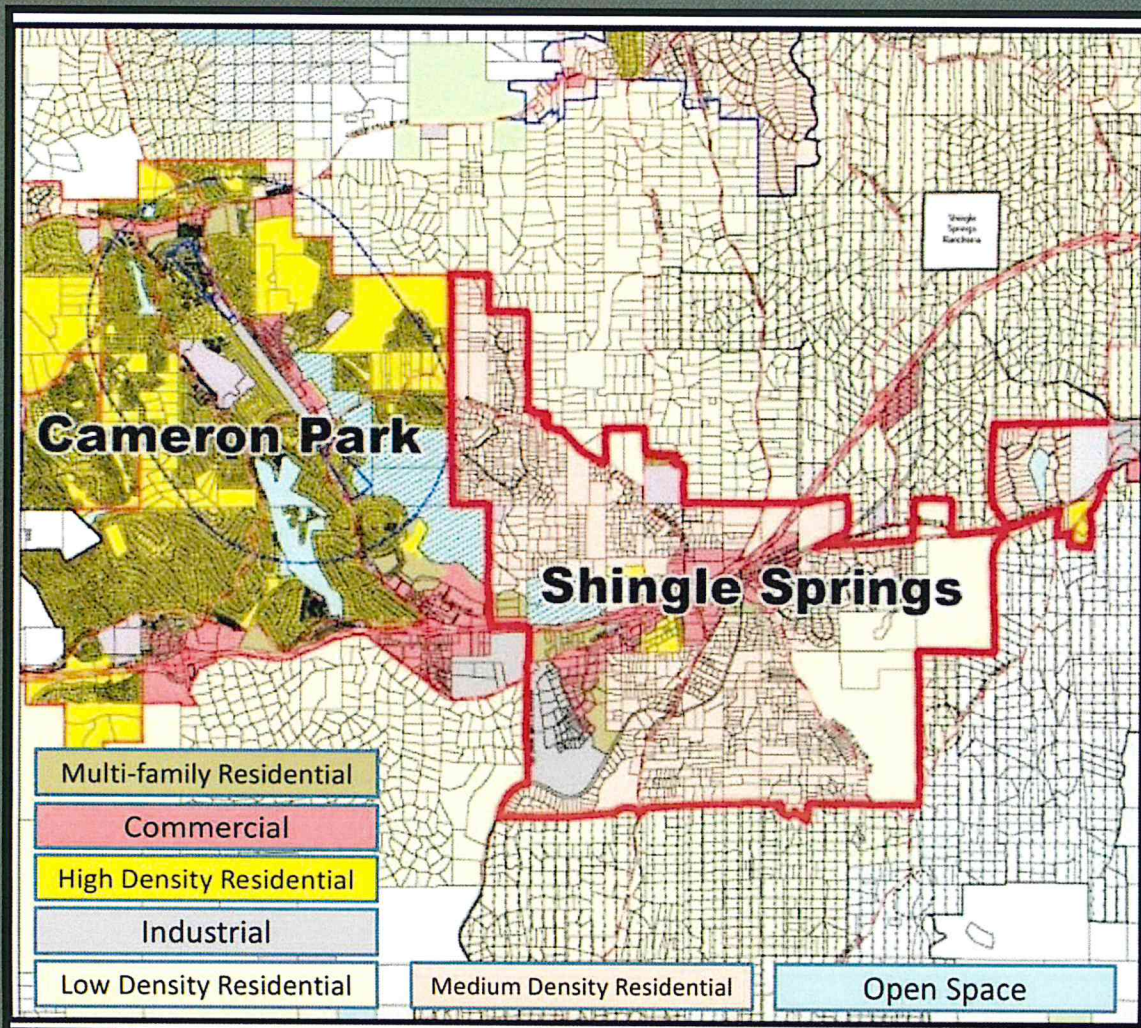
Shingle Springs Community Plan Key Features

Initial
Boundary
Map for
Community
Input

“Star Map”

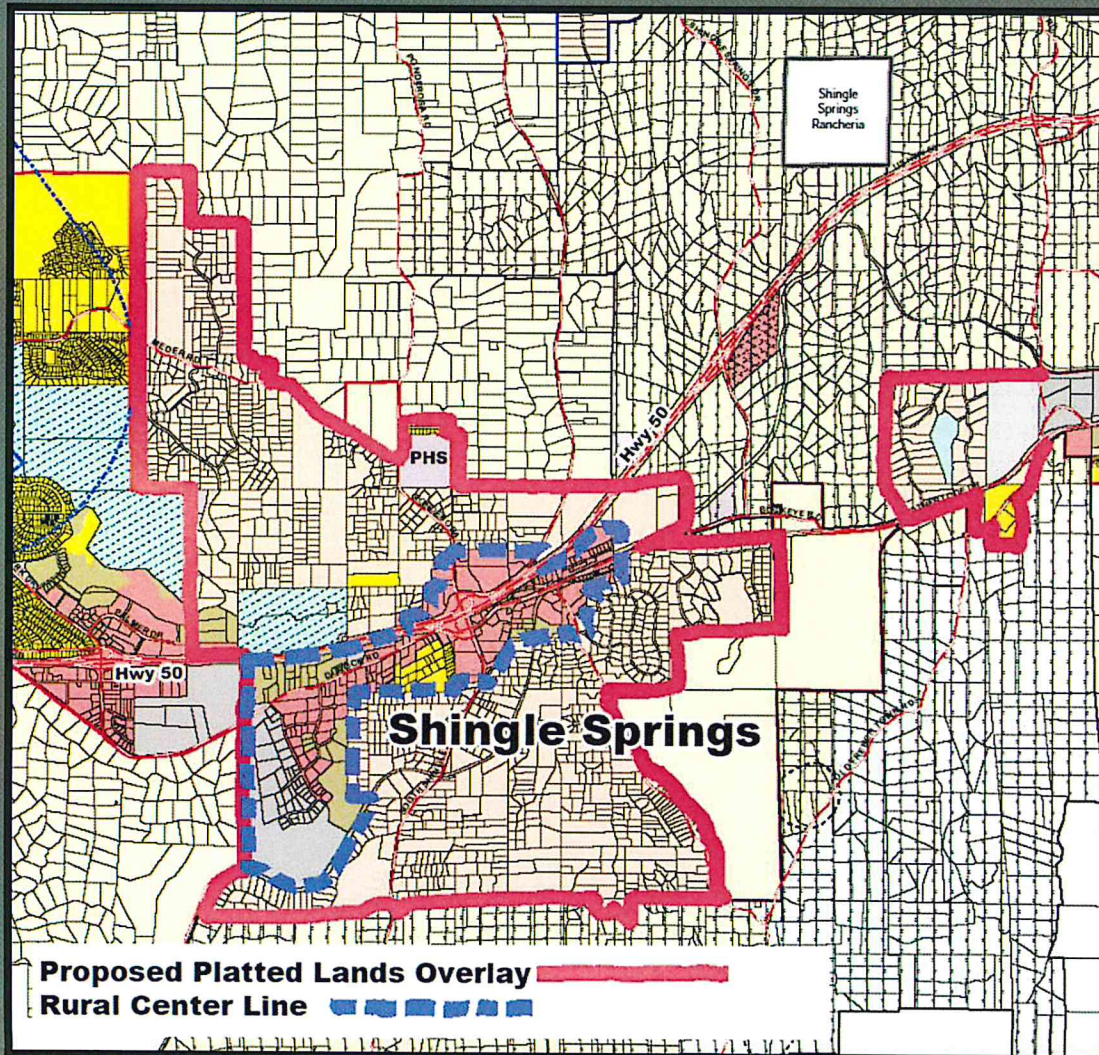


Shingle Springs Community Plan Key Features



Current
General
Plan
Map of
Shingle
Springs

Shingle Springs Community Plan Key Features



Proposed
General
Plan Map
of
Shingle
Springs

Shingle Springs Community Plan

Key Features

CRL Change – General Plan Amendment

- Two ways to amend General Plan
 - Board of Supervisor action
 - Voter Initiative
- On track for either path

Shingle Springs Community Plan Key Features



Public health & safety, aesthetics

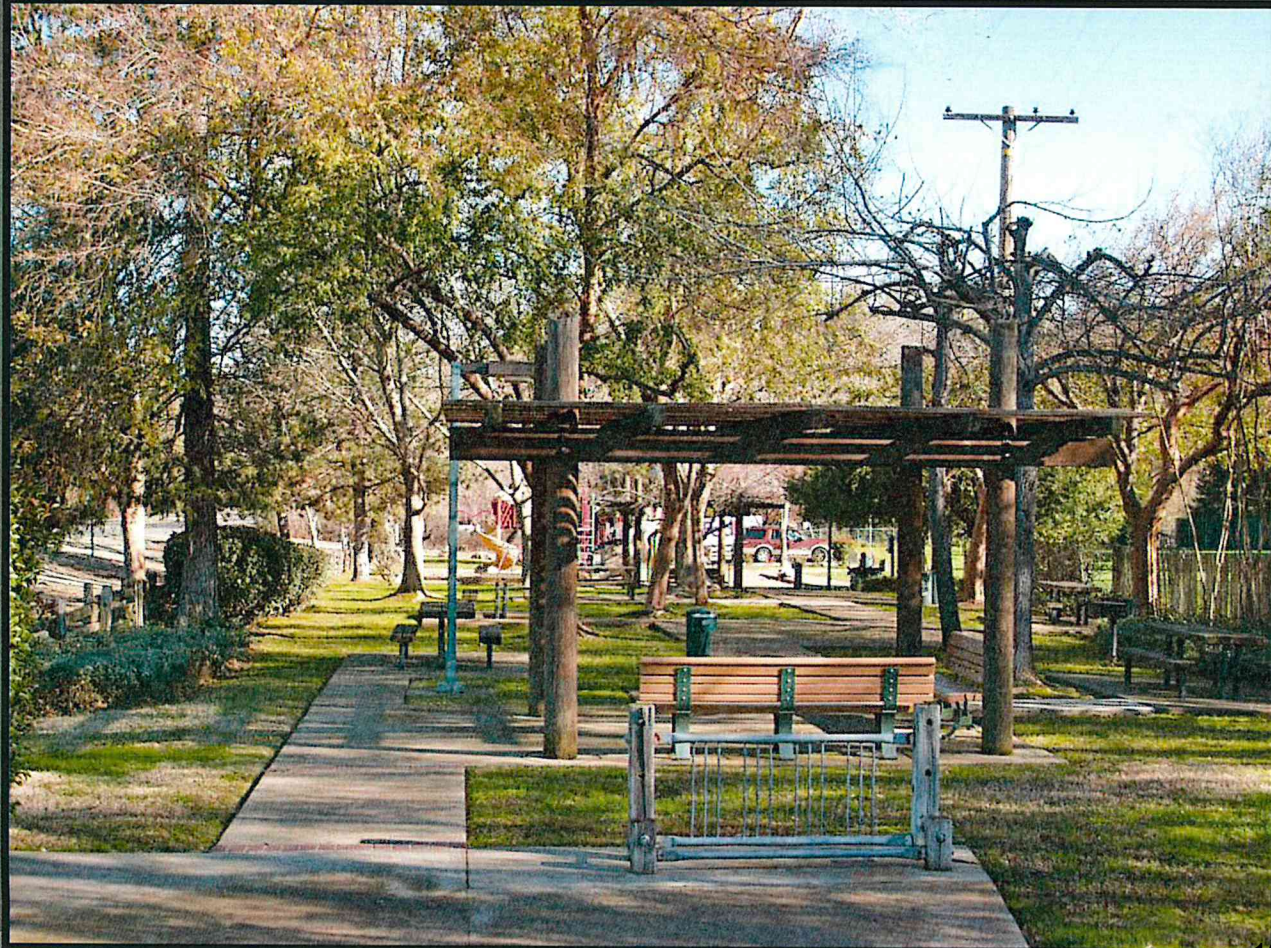
Shingle Springs Community Plan Key Features

Design Standard #1 choice



Shingle Springs Community Plan Key Features

Design Standard #2 choice



Shingle Springs Community Plan Key Features

Design Standard #3 choice



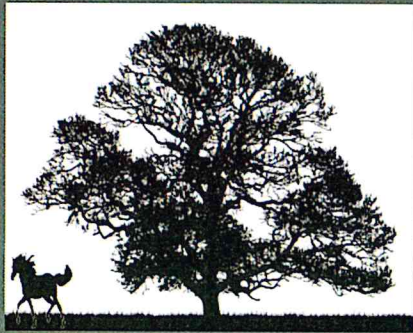
Shingle Springs Community Plan Key Features

Design Standard #4 choice



Shingle Springs Community Plan

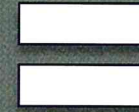
Key Features



Country lifestyle of
ranches and homes on
acreage with an inviting
downtown core



Preservation for
generations to come



A winning plan

Strong communities create economic development

~Please support the people of Shingle Springs~