

# **El Dorado County General Plan Biological Policies**

---

**January 26, 2015**



# Purpose of Hearing

## Decision Points and Timeline

- Review key Decision Points 2 and 3
- Following public comment, Board to provide direction on Decision Points 2 and 3



# Policy Update Timeline

Task	2015												2016				
	Jan	Feb	Mar	Apr	May	June	July	Aug	Sept	Oct	Nov	Dec	Jan	Feb	Mar	Apr	May
<b>Biological Policies/OWMP</b>																	
Board meetings	█	█	█		█	█											
Draft policy language/OWMP			█	█													
Final draft policy language/OWMP				█	█												
Final policy language/OWMP															█	█	█
<b>Environmental Impact Report</b>																	
Administrative Draft IS/NOP			█	█													
Notice of Preparation					█	█											
Scoping Meeting							█										
Administrative Draft EIR								█	█								
Draft EIR										█	█						
Public meetings on Draft EIR											█	█					
Administrative Final EIR													█	█	█		
Final EIR																█	█



# Decision Point Status

- January 2015 Hearing 1 (Jan. 13)
  - 1: Board approved OWMP In-Lieu Fee Study
- January 2015 Hearing 2 (Jan. 26)
  - 2: Oak Resource Measurement Methodology
  - 3: Roadway Undercrossing Requirements



# Upcoming Decision Points

## ■ February 2015 Hearing

- 4: Two-tiered Mitigation and Threshold
- 5: Oak Mitigation Exemptions
- 6: Priority Conservation Area (PCA) Update
- 7: Special Status Resource Mitigation

## ■ March 2015 Hearing

- 8: Important Biological Corridor (IBC) Standards
- 9: Ecological Areas In PCAs and IBCs
- 10: Database of Willing Sellers



# Decision Point 2

## Oak Resource Measurement Methodology

- Options:
  - Oak Woodland
  - Oak Canopy



# Decision Point 2

## Oak Resource Measurement Methodology

### ■ Oak Canopy

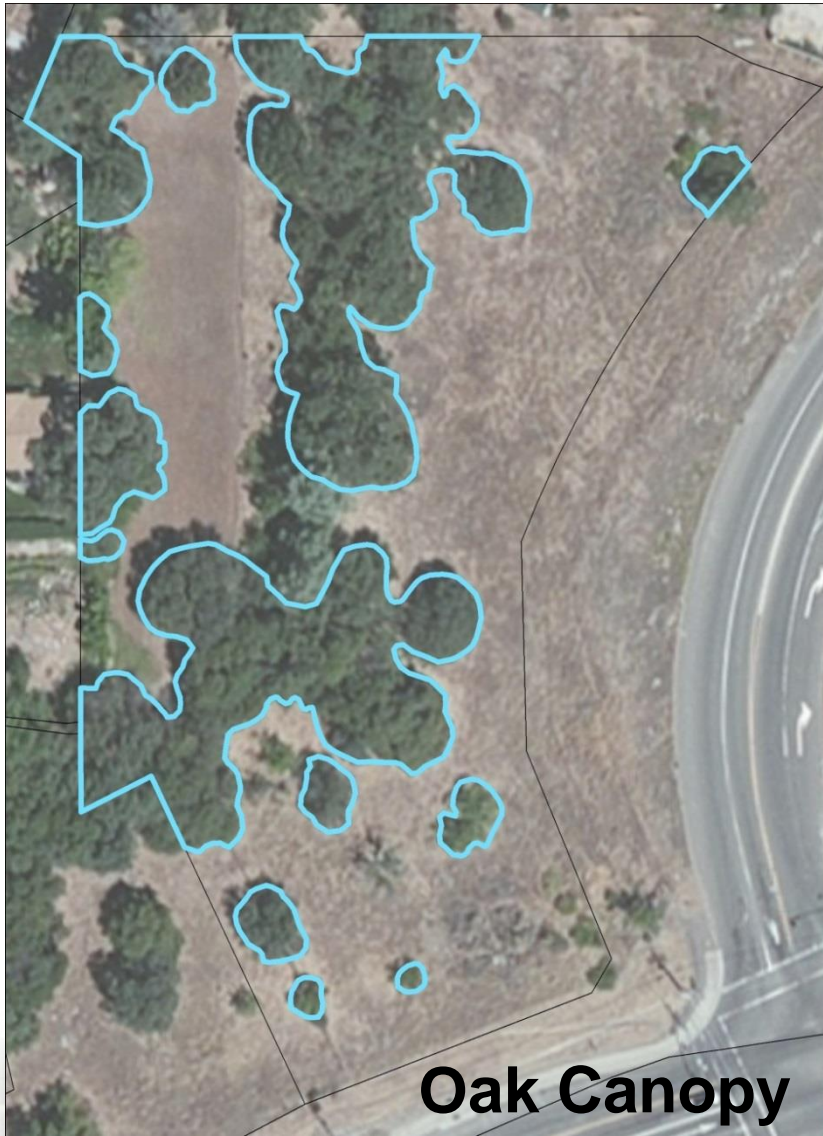
- Ground surface directly beneath the dripline
- Does not consider habitat value

### ■ Oak Woodland

- “An oak stand with greater than 10% canopy cover”
- 10% related to ground surface area, not boundaries
- Considers habitat value



# Oak Canopy vs. Oak Woodland





# Oak Woodland Density Comparison



# Decision Point 2

## Oak Resource Measurement Methodology

- Kuehl Bill (PRC 21083.4)
  - Requires project-level analysis of impacts to oak woodlands
- 2004 General Plan
  - Woodland and canopy terms used interchangeably



# Decision Point 2

## Oak Resource Measurement Methodology

- Consistency with State Regulations
  - Kuehl Bill (PRC 21083.4)
- Impact and Mitigation Determination
  - Woodland measurement allows for mitigation by woodland type, consistent with habitat mitigation
- Conservation Easement or In-Lieu Fee Determination
  - Additional work needed to translate canopy to woodland
- Current County Mitigation Requirements and Process
  - Option A mitigation requirements reconsidered with woodland measurement



# Decision Point 2

## Oak Resource Measurement Methodology

- Recommendation: Oak Woodland
  - Consistent with State Regulations
  - Considers habitat value
  - Minimizes time and cost related to PCA update
- Proposed policy revisions brought back to Board for consideration



# Decision Point 3

## Wildlife Movement and Undercrossings

### Options:

- General Plan policy language should require project-specific wildlife movement studies for future 4-, 6- and 8-lane roadway projects
- Current General Plan policy language regarding undercrossings is adequate



# Decision Point 3

## Wildlife Movement and Undercrossings

- General Plan Policy 7.4.2.8
  - County to consider wildlife movement during the construction of all future 4- and 6-lane roadways
  
- Wildlife Movement and Corridors Report (2010)
  - Evaluates potential value of improving existing undercrossings along US 50
  
  - Identifies potential key wildlife undercrossing locations along US 50



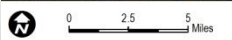
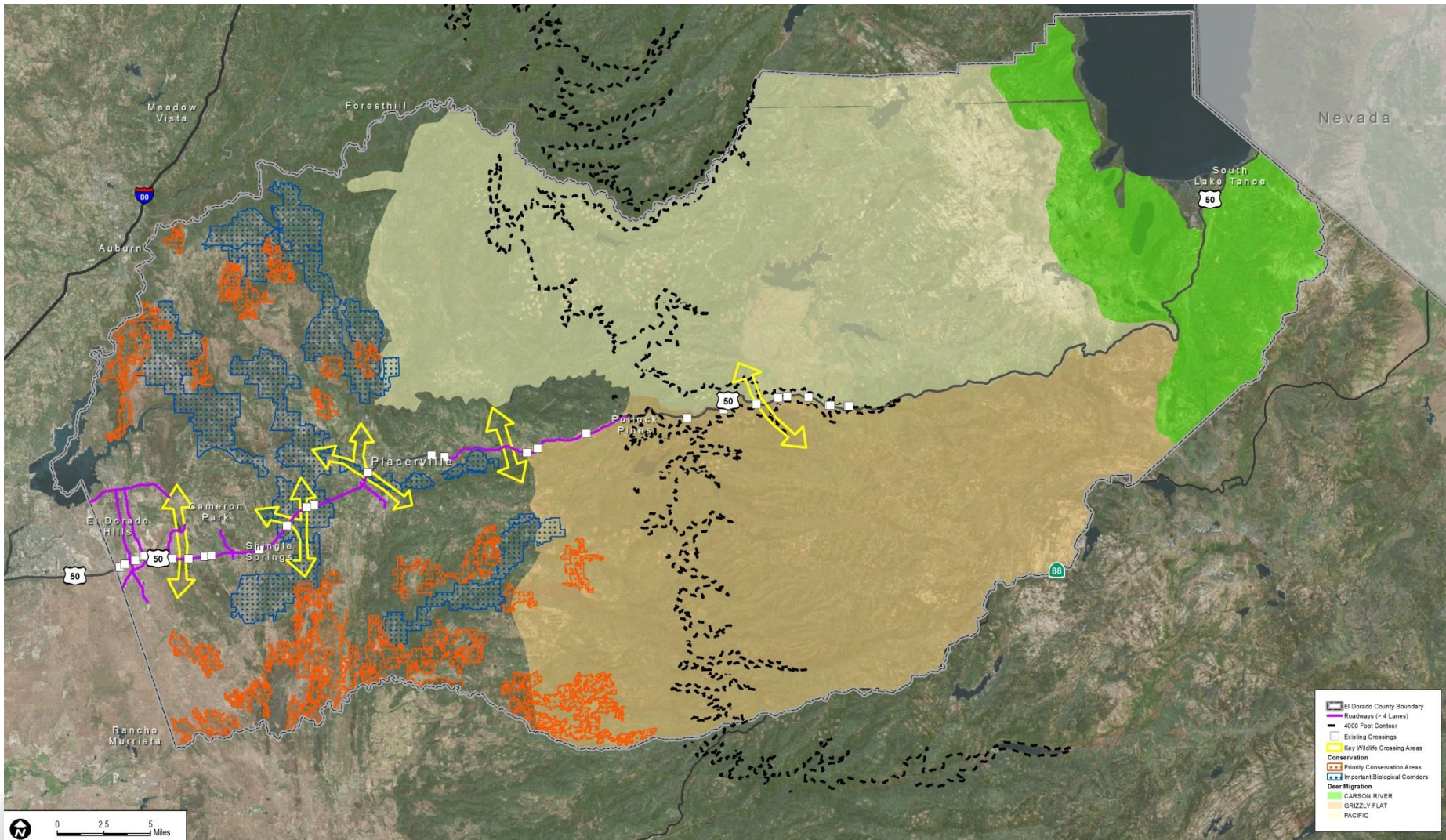
# Decision Point 3

## Roadway Undercrossing Requirements

- Wildlife Movement and Corridors Report
  - Evaluates existing and planned high-volume roadways in the context of the INRMP Phase 1
  - Does not address other future 4- and 6- lane County roadway projects
- Specific wildlife studies anticipated with INRMP Phase 2
- Preliminary review suggests limited number of 4-, 6- and 8-lane roadway projects



# Wildlife Movement





# Decision Point 3

## Wildlife Movement and Undercrossings

- Recommendation: Revise General Plan policy language to require project-specific wildlife movement studies
  - Ensure consistent approach within the County to evaluate/mitigate effects of roadway projects
- Proposed policy revisions brought back to Board for consideration



# Purpose of Hearing

- Public comment
- Board to provide:
  - Direction on Decision Point 2
  - Direction on Decision Point 3

