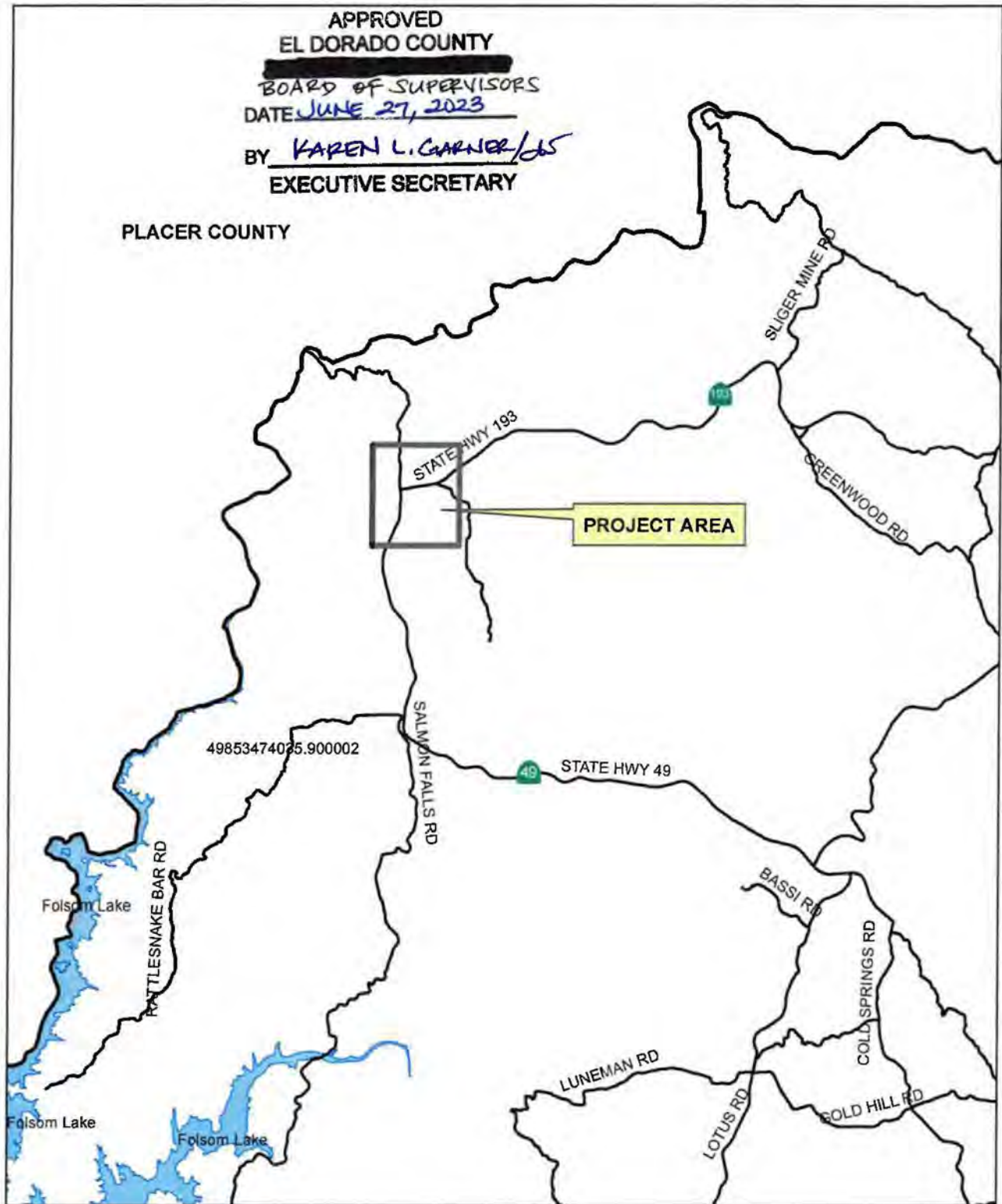


REZONE Z23-0003 - COOL DESIGN REVIEW OVERLAY STAFF MEMO EXHIBIT A - VICINITY MAP

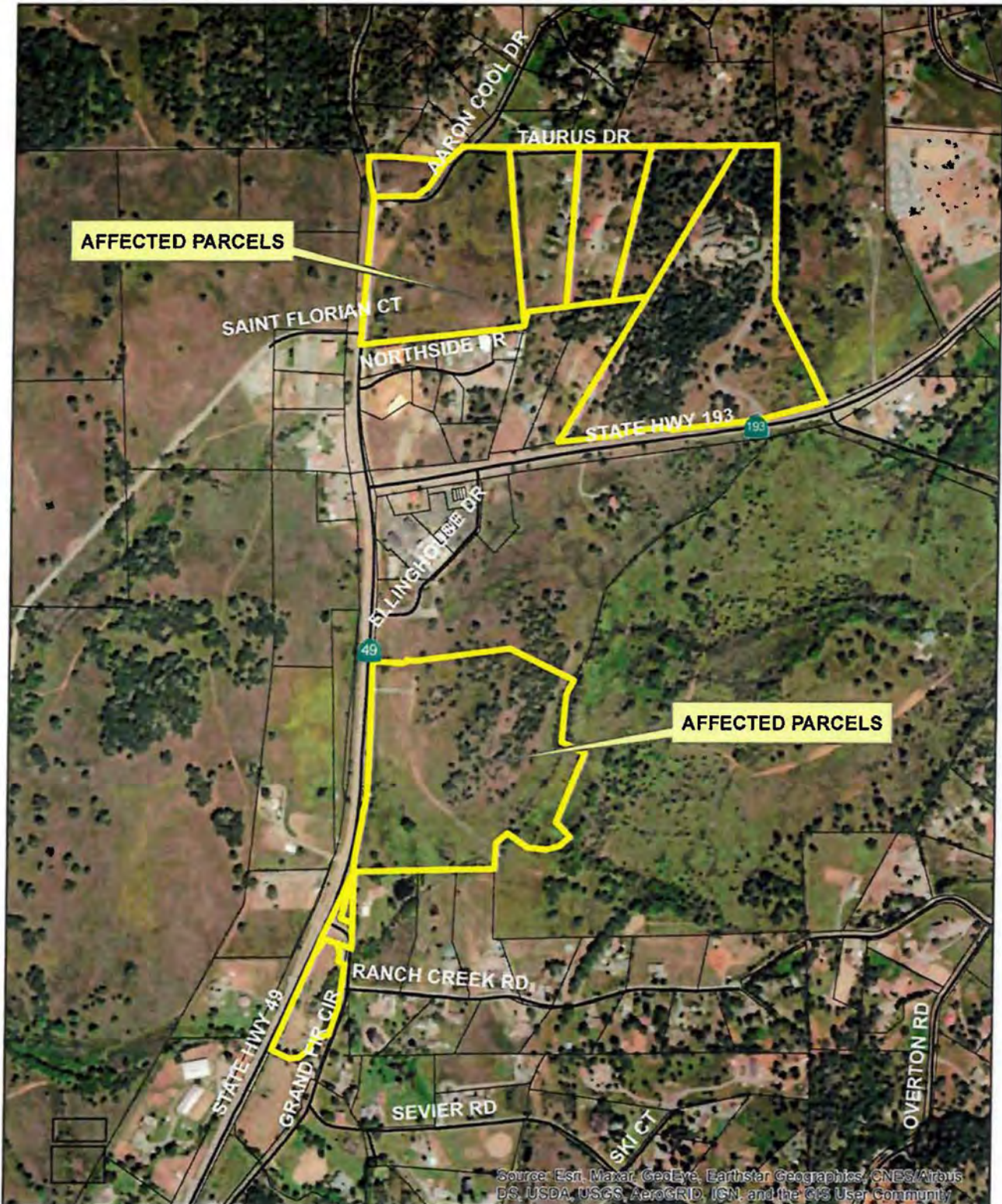
APPROVED
EL DORADO COUNTY
~~BOARD OF SUPERVISORS~~
DATE JUNE 27, 2023
BY KAREN L. GARNER/CS
EXECUTIVE SECRETARY

PLACER COUNTY



REZONE Z23-0003 - COOL DESIGN REVIEW OVERLAY
STAFF MEMO EXHIBIT B - SITE AERIAL PHOTO

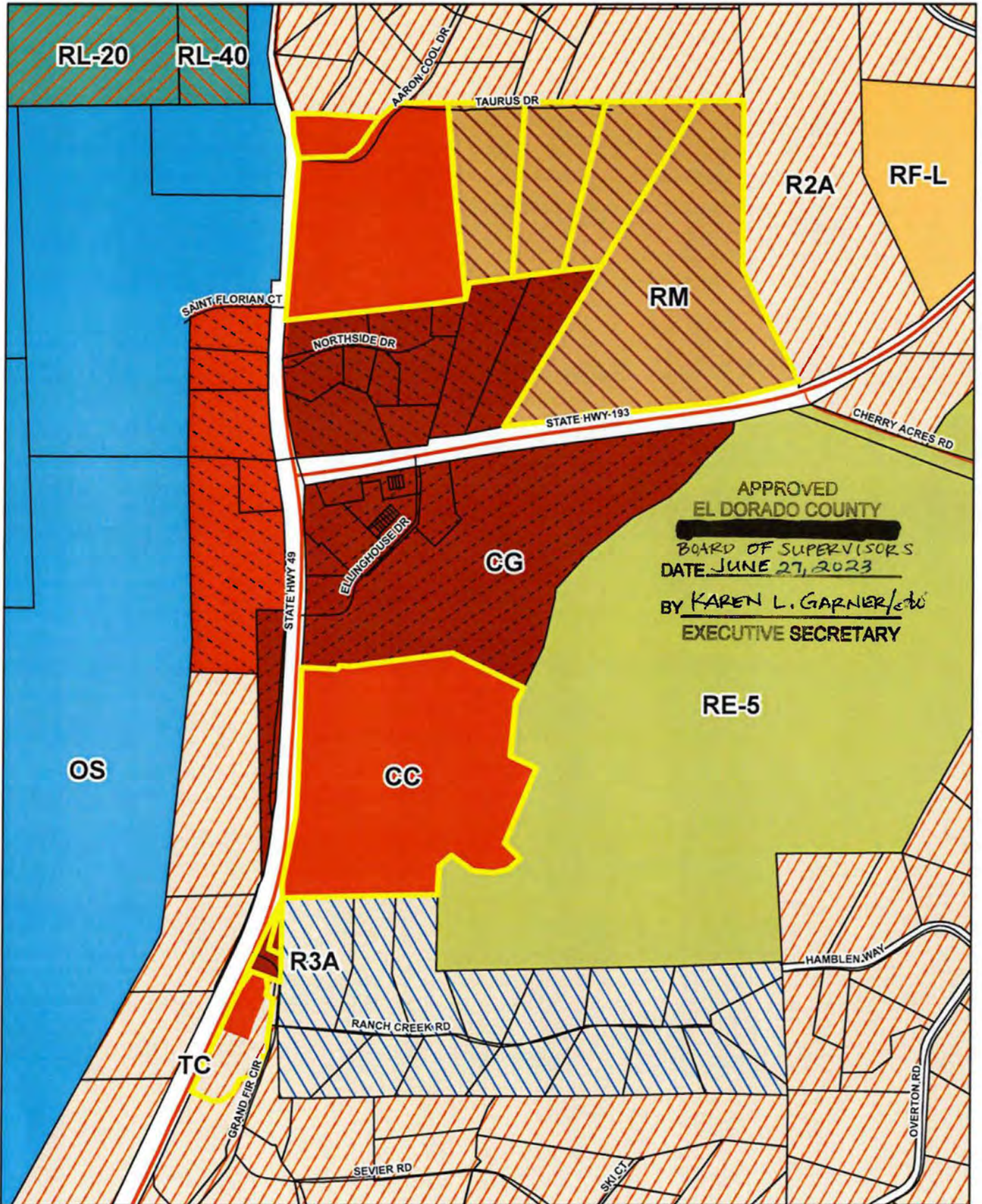
BY KAREN L. GARNER/cw
EXECUTIVE SECRETARY


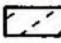
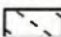


Source: Esri, Maxar, GeoEye, Earthstar Geographics, CNES/Airbus DS, USDA, USGS, AeroGRID, IGN, and the GIS User Community



REZONE Z23-0003 - COOL DESIGN REVIEW OVERLAY STAFF MEMO EXHIBIT C - AFFECTED PARCELS MAP



-  COMM & MFR MISSING OVERLAY
-  PD
-  DC

