

# Leadership El Dorado

Presented by  
BOARD OF SUPERVISORS  
EL DORADO COUNTY

2008 JUL 29 AM 8:56

LATE DISTRIBUTION

DATE 5-25-10



**El Dorado County Chamber of Commerce**

**542 Main Street**

**Placerville, CA 95667**

**Phone: (530) 621-5885**

**FAX: (530) 642-1624**

**[www.eldoradocounty.org](http://www.eldoradocounty.org)**

# Leadership El Dorado

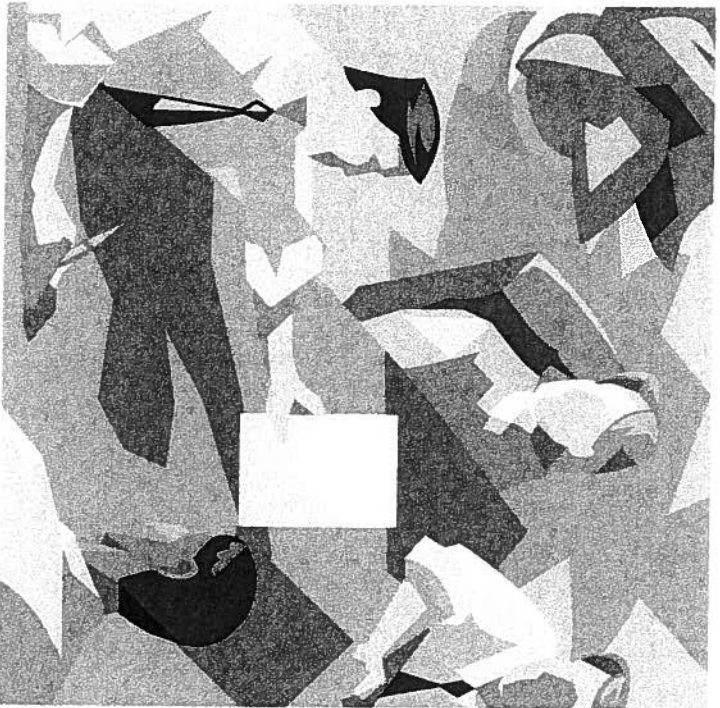
A Leadership Development  
Program for El Dorado County

---

Transforming GOOD MANAGERS INTO  
GREAT LEADERS

Phone: (530) 621-5885

[WWW.ELDORADOCOUNTY.ORG](http://WWW.ELDORADOCOUNTY.ORG)



# Leadership El Dorado

Our mission is to provide education and training to help build El Dorado County's future leaders. This program intends to send a diverse group of highly skilled leaders back into the community – better skilled, further motivated, with a stronger vision – to lead those around them toward an improved region and a healthier community.

---

El Dorado County Chamber of Commerce

542 Main Street

Placerville, CA 95667

Phone: (530) 621-5885

<http://www.eldoradocounty.org>



# ***The Importance of Leadership***

What is a leader? Is a leader born or made? Is leadership a function of one's character? Or is it a set of skills that can be taught?

There are many different definitions of leadership. Webster defines leadership as guidance, direction, or "showing the way." Stephen Covey, a renowned leadership expert and author, tells us that we "lead people and manage things." By these definitions, leadership is not an inborn trait, but instead a series of acquired skills. Research into the dynamics of leadership suggests that most people have the potential to become leaders in the right circumstances and with attention to strengthening key skills.

With the knowledge and desire to show the way, a person can be a leader. Knowledge can be acquired, and desire is the result of motivation.

Leadership El Dorado will drive this process by intense classroom activity, participatory sessions, team-action projects, public and private entry site visits, peer-to-peer exchange, and through other means which we hope ultimately promotes a stronger social and professional environment.



## About the Program

---

### **Program schedule and Curriculum**

The program is constructed to deliver one session each month to participants at different locations throughout the county.

Sessions typically take place on the 1st Wednesday of each month, beginning at 8:00a.m. and ending by 1:30p.m. so that participants can still balance other professional or personal needs. The program will include the sessions on the following curriculum:

- 
- Health Care
  - Local Government
  - Law Enforcement
  - Education
  - Communication and Media
  - Economic Development
  - Agriculture
  - Tourism and Film Promotion
  - Water and Natural Resources

## **Expectations of participants**

---

Attendance and regular participation in the Leadership El Dorado Program is imperative for individual success. Participants in this program should be willing to commit to the following:

- o Being “present” throughout the length of each monthly session
- o Having full support of their organization’s leadership
- o Participation in group activities and projects
- o Individual study on topic issues and completion of preparato assignments
- o Participation in the follow-up evaluation of the program
- o Attending an Opening Retreat and a Final Commencement Ceremony

*This program provides an outstanding opportunity to become knowledgeable about county-wide concerns, as well as to move into a leadership circle.”*  
*Vicki L. Barber, County Superintendent of Schools*



## **Be the One**

If it seems that the world needs more kindness,  
be the one to put it there.

If you see something that needs to be done,  
be the one to do it.

When you come across a problem,  
be the one to work out a solution,  
and turn that problem into an opportunity.

When the time is ripe for a fresh perspective,  
be the one to offer your opinion.

If no one is sure of what to do or say,  
be the one to offer a genuine smile  
and a kind word of reassurance.

When there is something that must be said,  
be the one to speak up and get it out in the open.

If everyone waits for someone else to make the first move,  
nothing ever gets done.

Be the one to step forward

And get all those around you moving in a positive direction.  
The world needs those who are willing to get things going.

And life richly rewards those who do it.

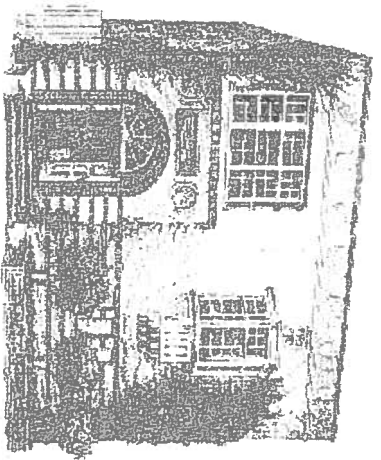
Take the initiative and be a leader.

Someone has to do it,

And you can be the one.

Ralph Marston





### Application and selection criteria

Leadership El Dorado is now accepting applications for the 2010/2011 program. Applications must be received by 5:00 p.m., July 31, 2010 for consideration. Fees for the program are \$495 for any chamber member and \$750 for non-chamber members. Application for the program can be downloaded from the El Dorado County Chamber website at: [www.eldoradocounty.org](http://www.eldoradocounty.org).

***The class will be limited to 25 participants and the selection will be made based on the candidate's interview and their answers to the following essay questions***

Why are you interested in participating in this program and what do you hope to gain?

Describe your current role and responsibilities and the importance of your organization.

Describe your experience, what is the difference between managing and leading?

Give an example in leadership that you have learned.

Describe one of the greatest successes of your career. Give an example of where you did not succeed.

What do you feel is the most important future issue facing El Dorado County?





# Leadership El Dorado



## Q & A

**El Dorado County Chamber of Commerce**

**542 Main Street**

**Placerville, CA 95667**

**Phone: (530) 621-5885**

**[www.eldoradocounty.org](http://www.eldoradocounty.org)**