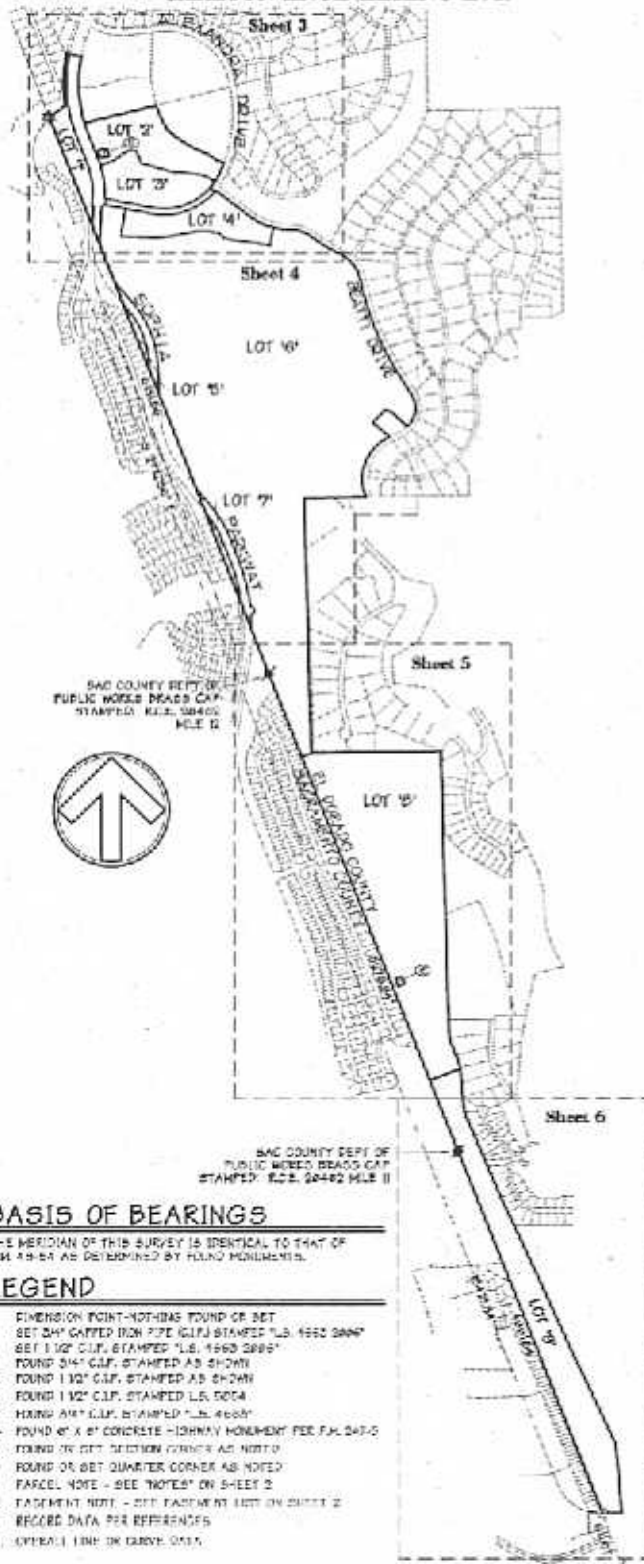


Promontory Village Center

BEING A PORTION OF PARCEL 17' OF P.M. 48-54, BEING A PORTION OF SECTIONS 27, 28, 33 & 34, T. 10 N., R. 8 E., M.D.M. & A PORTION OF SECTIONS 3 & 10 T. 9 N., R. 8 E., M.D.M.

COUNTY OF EL DORADO, STATE OF CALIFORNIA
MARCH, 2007 SCALE: 1" = 800'
SHEET 2 OF 7

CARLTON ENGINEERING INC.



NOTES

1. THE AREA CONTAINED WITHIN THIS SUBDIVISION IS 28.61 ACRES, CONSISTING OF 10 LOTS, 107' SEPARATED FROM BEARING PLUMBED AND 9 MISCELLANEOUS LOTS, AND IS CONSISTENT WITH PLATE 8 OF TENTATIVE MAP 20-1002 APPROVED BY THE BOARD OF SUPERVISORS ON JANUARY 14, 2006.
2. LOTS 2, 4, 6 & 8 ARE RESERVED FOR FUTURE DEVELOPMENT AND ARE LIMITED TO FINANCING PURPOSES UNTIL SUCH DEVELOPMENT OCCURS.
3. LOTS 1, 3, 5, 7 & 9 ARE TO BE GRANTED TO THE HOME-OWNERS ASSOCIATION CREATED FOR THIS TRACT/VILLAGE FOR USE AS A LANDSCAPE CORRIDOR / OPEN SPACE.
4. THE PORTIONS OF ALEXANDRA DRIVE AND SOPHIA PARKWAY THAT LIE WITHIN THE BOUNDARY SHOWN HEREON WERE IRREVOCABLY OFFERED FOR DEDICATION TO, AND ACCEPTED BY, THE COUNTY OF EL DORADO, STATE OF CALIFORNIA, REFER TO DOCUMENT NUMBERS 2066 007620 AND 2066-007620 RESPECTIVELY.
5. (1) N.A.P.O.C. - APR # 04-08-03 EL DORADO IRRIGATION DISTRICT - PER DOC # 02-0280
6. (2) N.A.P.O.C. - APR # 04-08-03 EL DORADO IRRIGATION DISTRICT - PER DOC # 02-0280
7. PORTIONS OF THE ROADS SHOWN HEREON WERE IRREVOCABLY OFFERED FOR DEDICATION TO, AND ACCEPTED BY, THE COUNTY OF EL DORADO FOR THE FOLLOWING DOCUMENT NUMBERS:
 - BEAUTY DRIVE # 00-0074 (AFFECTS INTERIOR LOTS)
 - ALEXANDRA DRIVE # 00-0720 (AFFECTS INTERIOR LOTS)
 - SOPHIA PARKWAY # 00-0720 (AFFECTS INTERIOR LOTS)
8. THE PORTIONS OF SOPHIA PARKWAY AND ALEXANDRA DRIVE WITH THE BOUNDARY SHOWN ARE PER RECORD DOCUMENT, WHERE SAID RIGHTS INTEREST, A GRANTOR'S BLOCK/PARTY AND SIGNATURES AND WITNESSES, THE SOLUTION IS SHOWN HEREON ALONG WITH RECORD DATA FROM SAID DOCUMENTS (2) & (3)
9. P.M. 48-54 LOTS 6 A NOTICE OF PROTECTION SHOWS RECORDED AS DOC # 03-0124 THAT AFFECTS THE PROPERTY SHOWN HEREON, REFER TO THE OTHER SHEET OF THIS DOCUMENT FOR AN ADDITIONAL MAP.

EASEMENT LIST

- (1) A PUBLIC UTILITY EASEMENT (PUE) TO AMERICAN RIVER ELECTRIC COMPANY PER DOC # 00-0074 (AFFECTS LOTS 1-10)
- (2) A PUE TO PACIFIC TELEPHONE & TELEGRAPH COMPANY (PT&T) PER DOC # 00-0074 (AFFECTS LOTS 1-10)
- (3) A PUE TO PACIFIC GAS AND ELECTRIC COMPANY (PG&E) PER DOC # 00-0074 (AFFECTS LOTS 1-10)
- (4) A TOWER LEASE EASEMENT TO SACRAMENTO MUNICIPAL UTILITY DISTRICT (SMUD) PER DOC # 00-0074 (AFFECTS LOTS 1 & 2)
- (5) A 10' WIDE PUE TO PG&E PER DOC # 00-0074 (AFFECTS LOTS 1 & 2)
- (6) A 10' WIDE PUE TO PG&E PER DOC # 00-0074 (AFFECTS LOT 3)
- (7) A 10' WIDE PUE TO PG&E PER DOC # 00-0074 (AFFECTS LOTS 1 & 2)
- (8) A 10' WIDE PUE TO PG&E PER DOC # 00-0074 (AFFECTS LOTS 1 & 2)
- (9) A 10' WIDE PUE TO PACIFIC BELL TELEPHONE COMPANY (PACBELL) PER DOC # 00-0074 (AFFECTS LOTS 1 & 2)
- (10) A PUE TO PACBELL PER DOC # 00-0074 (AFFECTS LOT 1)
- (11) A SEWER PIPELINE EASEMENT TO EL DORADO IRRIGATION DISTRICT (EID) PER DOC # 00-0074 (AFFECTS LOTS 1-10)
- (12) A SEWER PIPELINE EASEMENT TO EID PER DOC # 00-0074 (AFFECTS LOTS 6 & 7)
- (13) A 10' WIDE PUE TO PG&E PER DOC # 00-0074 (AFFECTS LOTS 1 & 2)
- (14) A 10' WIDE PUE TO PG&E PER DOC # 00-0074 (AFFECTS LOTS 1 & 2)
- (15) PUBLIC UTILITY EASEMENTS AND NOTES AS SUCH ARE DELINEATED OR EXPRESSED BY P.M. 48-54 (SEE NOTES 1-10 & 11-15)
- (16) EASEMENTS TO GAS, FIRE WATER AND SEWER PIPE LINES PER DOC # 00-0074 (AFFECTS LOT 6 - A PORTION LIES WITHIN ALEXANDRA DRIVE AND SOPHIA PARKWAY)
- (17) A 10' WIDE SEWER PIPELINE EASEMENT TO EID PER DOC # 00-0074 (AFFECTS LOT 6)
- (18) AN IRREVOCABLE OFFER OF DEDICATION (I.O.D.) ALONG SOPHIA PARKWAY TO THE COUNTY OF EL DORADO, FOR SURVEY (S.E.), LANDSCAPE MAINTENANCE (L.E.) AND BICYCLIST (B.C.) EASEMENTS PER DOC # 00-0074
- (19) AN I.O.D. ALONG BEAUTY DRIVE TO THE COUNTY OF EL DORADO, FOR PUBLIC UTILITY (P.U.) AND PEDESTRIAN (P.E.) EASEMENTS PER DOC # 00-0074
- (20) AN I.O.D. ALONG ALEXANDRA DRIVE TO THE COUNTY OF EL DORADO, FOR PUBLIC UTILITY (P.U.) AND PEDESTRIAN (P.E.) EASEMENTS PER DOC # 00-0074

REFERENCES

- | | | |
|-------------------|-------------------|-------------------|
| (1) P.M. 48-54 | (2) S.M. 20-1002 | (3) S.M. 20-1002 |
| (4) P.M. 47-107 | (5) P.M. 20-1002 | (6) S.M. 20-1002 |
| (7) S.M. 20-1002 | (8) S.M. 20-1002 | (9) S.M. 20-1002 |
| (10) S.M. 20-1002 | (11) S.M. 20-1002 | (12) S.M. 20-1002 |
| (13) S.M. 20-1002 | (14) S.M. 20-1002 | (15) S.M. 20-1002 |
| (16) S.M. 20-1002 | (17) S.M. 20-1002 | (18) S.M. 20-1002 |
| (19) S.M. 20-1002 | (20) S.M. 20-1002 | (21) S.M. 20-1002 |

REFERENCE NOTE

ALL ABOVE LISTED REFERENCES BEGINNING WITH S.M. (SCALE OF MAPS) ARE MAPS ON RECORD WITH SACRAMENTO COUNTY, THE REMAINING DOCUMENTS ARE ON RECORD WITH EL DORADO COUNTY.

BASIS OF BEARINGS

THE MERIDIAN OF THIS SURVEY IS IDENTICAL TO THAT OF P.M. 48-54 AS DETERMINED BY PLUMB MONUMENTS.

LEGEND

- DIMENSION POINT - NOT HAS FOUND OR SET
- SET 2" DIA GALVANIZED IRON PIPE (G.I.P.) STAMPED "L.B. 1993 2886"
- SET 1 1/2" G.I.P. STAMPED "L.B. 1993 2886"
- FOUND 3/4" G.I.P. STAMPED AS SHOWN
- FOUND 1 1/2" G.I.P. STAMPED AS SHOWN
- FOUND 1 1/2" G.I.P. STAMPED "L.B. 1993"
- ★ FOUND 1 1/2" G.I.P. STAMPED "L.B. 1993"
- FOUND 4" X 8" CONCRETE - MONUMENT PER P.M. 48-54
- FOUND IN SET SECTION CORNER AS NOTED
- FOUND OR SET QUARTER CORNER AS NOTED
- PARCEL NOTE - SEE "NOTES" ON SHEET 2
- LE EASEMENT NOTE - SEE EASEMENT LIST ON SHEET 2
- (*) RECORD DATA PER REFERENCES
- (1A) OTHER LINE OR CURVE ONLY

Promontory Village Center

BEING A PORTION OF PARCEL 1ST OF P.M. 48-54, BEING A PORTION OF SECTIONS 27, 28, 33 & 34, T. 10 N., R. 8 E., M.D.M., & A PORTION OF SECTIONS 5 & 10 T. 9 N., R. 8 E., M.D.M.

COUNTY of EL DORADO, STATE of CALIFORNIA
MARCH, 2007 SCALE: T = 200'
SHEET 3 OF 7

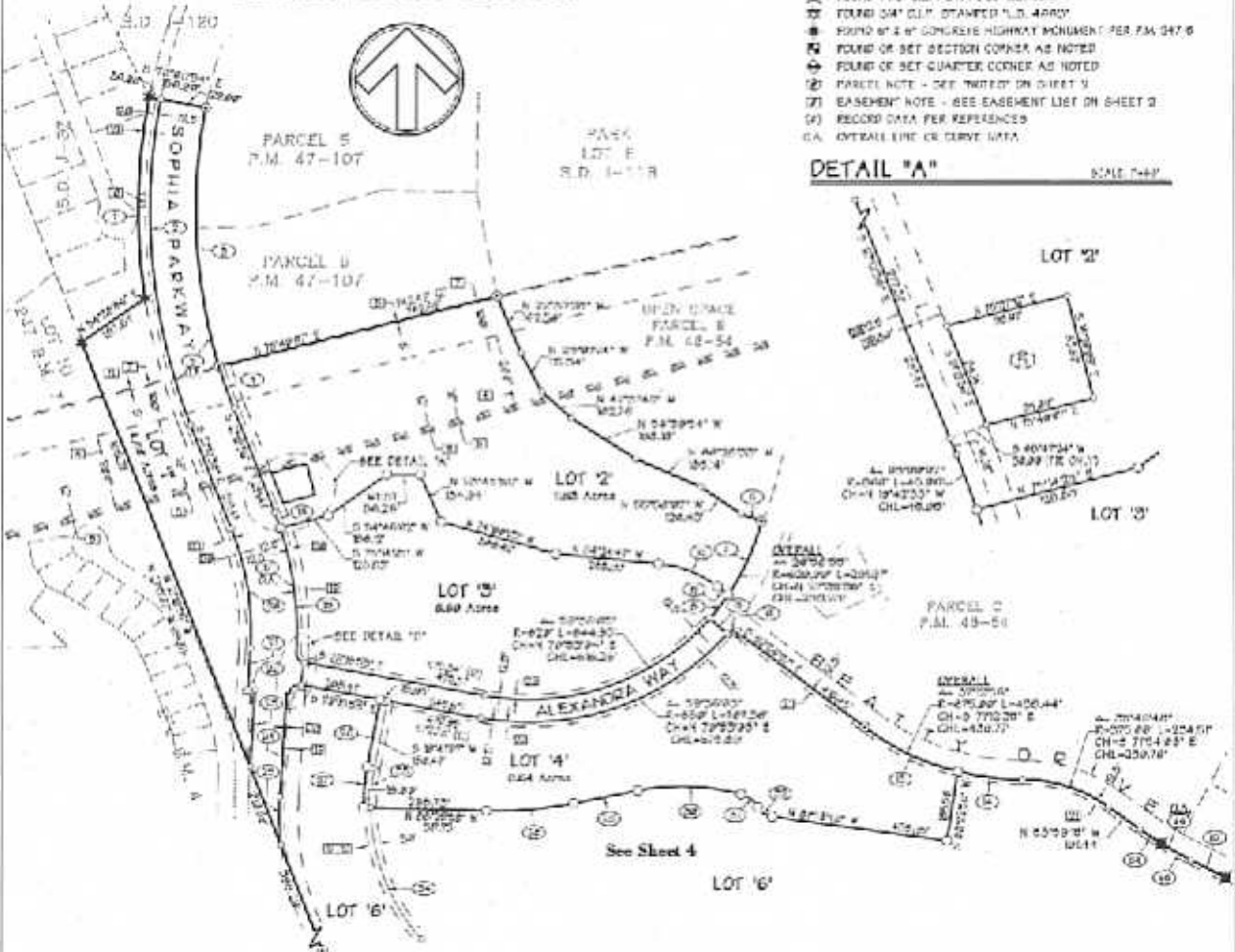
CARLTON ENGINEERING INC.

LEGEND

- OVERSIGHT POINT MONUMENT FOUND ON SET
- SET 3/4" GALVANIZED IRON PIPE (LIPS STAMPED "L.S. 1963 2284")
- SET 1/2" GALV. STAMPED "L.S. 1963 2284"
- FOUND 3/4" CLIP, STAMPED "S. 8/20/04"
- FOUND 1/2" CLIP, STAMPED "S. 8/20/04"
- FOUND 1/4" CLIP, STAMPED "L.S. 9554"
- FOUND 3/4" CLIP, STAMPED "L.S. 4690"
- FOUND 3/4" CLIP, STAMPED "L.S. 4690"
- FOUND 2" x 4" CONCRETE HIGHWAY MONUMENT PER P.M. 347.6
- FOUND OR SET SECTION CORNER AS NOTED
- FOUND OR SET QUARTER CORNER AS NOTED
- ① PARCEL NOTE - SEE "NOTES" ON SHEET 1
- ② EASEMENT NOTE - SEE EASEMENT LIST ON SHEET 2
- ③ RECORD DATA PER REFERENCES
- ④ CONTROLS LINE OR CURVE DATA

DETAIL "A"

SCALE: T=40'



TABULATION

| NO. | BEARING & DISTANCE | ARC LENGTH | CURVATURE | DELTA | |
|-----|--------------------|------------|-----------|-------|------------|
| 1 | 47°14'02" N | 604.07 | 933.24 | 8.64 | 47°29'57" |
| 2 | 20°17'02" E | 843.07 | 672.27 | 8.08 | 32°36'12" |
| 3 | 205°40'57" E | 258.25 | 281.21 | 44.8 | 205°24'11" |
| 4 | 275°52'07" E | 25.07 | 16.22 | 8.18 | 64°12'07" |
| 5 | 201°18'02" E | 704.23 | 695.23 | 44.8 | 32°36'12" |
| 6 | 10°18'02" W | 61.20 | | | |
| 7 | 10°18'02" W | 10.81 | 23.27 | 61.8 | 10°33'57" |
| 8 | 40°18'02" N | 66.81 | 71.54 | 45.8 | 40°33'57" |
| 9 | 40°18'02" N | 75.07 | | | |
| 10 | 24°18'02" W | 31.20 | 26.13 | 27.8 | 64°12'07" |
| 11 | 24°18'02" W | 182.01 | 224.21 | 62.8 | 32°36'12" |
| 12 | 275°52'07" E | 148.2 | 165.17 | 48.8 | 47°29'57" |
| 13 | 201°18'02" E | 61.20 | | | |
| 14 | 10°18'02" W | 61.20 | | | |
| 15 | 10°18'02" W | 10.81 | 23.27 | 61.8 | 10°33'57" |
| 16 | 40°18'02" N | 66.81 | 71.54 | 45.8 | 40°33'57" |
| 17 | 40°18'02" N | 75.07 | | | |
| 18 | 24°18'02" W | 31.20 | 26.13 | 27.8 | 64°12'07" |
| 19 | 24°18'02" W | 182.01 | 224.21 | 62.8 | 32°36'12" |
| 20 | 275°52'07" E | 148.2 | 165.17 | 48.8 | 47°29'57" |
| 21 | 201°18'02" E | 61.20 | | | |
| 22 | 10°18'02" W | 61.20 | | | |
| 23 | 10°18'02" W | 10.81 | 23.27 | 61.8 | 10°33'57" |
| 24 | 40°18'02" N | 66.81 | 71.54 | 45.8 | 40°33'57" |
| 25 | 40°18'02" N | 75.07 | | | |
| 26 | 24°18'02" W | 31.20 | 26.13 | 27.8 | 64°12'07" |
| 27 | 24°18'02" W | 182.01 | 224.21 | 62.8 | 32°36'12" |
| 28 | 275°52'07" E | 148.2 | 165.17 | 48.8 | 47°29'57" |
| 29 | 201°18'02" E | 61.20 | | | |
| 30 | 10°18'02" W | 61.20 | | | |
| 31 | 10°18'02" W | 10.81 | 23.27 | 61.8 | 10°33'57" |
| 32 | 40°18'02" N | 66.81 | 71.54 | 45.8 | 40°33'57" |
| 33 | 40°18'02" N | 75.07 | | | |
| 34 | 24°18'02" W | 31.20 | 26.13 | 27.8 | 64°12'07" |
| 35 | 24°18'02" W | 182.01 | 224.21 | 62.8 | 32°36'12" |
| 36 | 275°52'07" E | 148.2 | 165.17 | 48.8 | 47°29'57" |
| 37 | 201°18'02" E | 61.20 | | | |
| 38 | 10°18'02" W | 61.20 | | | |
| 39 | 10°18'02" W | 10.81 | 23.27 | 61.8 | 10°33'57" |
| 40 | 40°18'02" N | 66.81 | 71.54 | 45.8 | 40°33'57" |
| 41 | 40°18'02" N | 75.07 | | | |
| 42 | 24°18'02" W | 31.20 | 26.13 | 27.8 | 64°12'07" |
| 43 | 24°18'02" W | 182.01 | 224.21 | 62.8 | 32°36'12" |
| 44 | 275°52'07" E | 148.2 | 165.17 | 48.8 | 47°29'57" |
| 45 | 201°18'02" E | 61.20 | | | |
| 46 | 10°18'02" W | 61.20 | | | |
| 47 | 10°18'02" W | 10.81 | 23.27 | 61.8 | 10°33'57" |
| 48 | 40°18'02" N | 66.81 | 71.54 | 45.8 | 40°33'57" |
| 49 | 40°18'02" N | 75.07 | | | |
| 50 | 24°18'02" W | 31.20 | 26.13 | 27.8 | 64°12'07" |
| 51 | 24°18'02" W | 182.01 | 224.21 | 62.8 | 32°36'12" |
| 52 | 275°52'07" E | 148.2 | 165.17 | 48.8 | 47°29'57" |
| 53 | 201°18'02" E | 61.20 | | | |
| 54 | 10°18'02" W | 61.20 | | | |
| 55 | 10°18'02" W | 10.81 | 23.27 | 61.8 | 10°33'57" |
| 56 | 40°18'02" N | 66.81 | 71.54 | 45.8 | 40°33'57" |
| 57 | 40°18'02" N | 75.07 | | | |
| 58 | 24°18'02" W | 31.20 | 26.13 | 27.8 | 64°12'07" |
| 59 | 24°18'02" W | 182.01 | 224.21 | 62.8 | 32°36'12" |
| 60 | 275°52'07" E | 148.2 | 165.17 | 48.8 | 47°29'57" |
| 61 | 201°18'02" E | 61.20 | | | |
| 62 | 10°18'02" W | 61.20 | | | |
| 63 | 10°18'02" W | 10.81 | 23.27 | 61.8 | 10°33'57" |
| 64 | 40°18'02" N | 66.81 | 71.54 | 45.8 | 40°33'57" |
| 65 | 40°18'02" N | 75.07 | | | |
| 66 | 24°18'02" W | 31.20 | 26.13 | 27.8 | 64°12'07" |
| 67 | 24°18'02" W | 182.01 | 224.21 | 62.8 | 32°36'12" |
| 68 | 275°52'07" E | 148.2 | 165.17 | 48.8 | 47°29'57" |
| 69 | 201°18'02" E | 61.20 | | | |
| 70 | 10°18'02" W | 61.20 | | | |
| 71 | 10°18'02" W | 10.81 | 23.27 | 61.8 | 10°33'57" |
| 72 | 40°18'02" N | 66.81 | 71.54 | 45.8 | 40°33'57" |
| 73 | 40°18'02" N | 75.07 | | | |
| 74 | 24°18'02" W | 31.20 | 26.13 | 27.8 | 64°12'07" |
| 75 | 24°18'02" W | 182.01 | 224.21 | 62.8 | 32°36'12" |
| 76 | 275°52'07" E | 148.2 | 165.17 | 48.8 | 47°29'57" |
| 77 | 201°18'02" E | 61.20 | | | |
| 78 | 10°18'02" W | 61.20 | | | |
| 79 | 10°18'02" W | 10.81 | 23.27 | 61.8 | 10°33'57" |
| 80 | 40°18'02" N | 66.81 | 71.54 | 45.8 | 40°33'57" |
| 81 | 40°18'02" N | 75.07 | | | |
| 82 | 24°18'02" W | 31.20 | 26.13 | 27.8 | 64°12'07" |
| 83 | 24°18'02" W | 182.01 | 224.21 | 62.8 | 32°36'12" |
| 84 | 275°52'07" E | 148.2 | 165.17 | 48.8 | 47°29'57" |
| 85 | 201°18'02" E | 61.20 | | | |
| 86 | 10°18'02" W | 61.20 | | | |
| 87 | 10°18'02" W | 10.81 | 23.27 | 61.8 | 10°33'57" |
| 88 | 40°18'02" N | 66.81 | 71.54 | 45.8 | 40°33'57" |
| 89 | 40°18'02" N | 75.07 | | | |
| 90 | 24°18'02" W | 31.20 | 26.13 | 27.8 | 64°12'07" |
| 91 | 24°18'02" W | 182.01 | 224.21 | 62.8 | 32°36'12" |
| 92 | 275°52'07" E | 148.2 | 165.17 | 48.8 | 47°29'57" |
| 93 | 201°18'02" E | 61.20 | | | |
| 94 | 10°18'02" W | 61.20 | | | |
| 95 | 10°18'02" W | 10.81 | 23.27 | 61.8 | 10°33'57" |
| 96 | 40°18'02" N | 66.81 | 71.54 | 45.8 | 40°33'57" |
| 97 | 40°18'02" N | 75.07 | | | |
| 98 | 24°18'02" W | 31.20 | 26.13 | 27.8 | 64°12'07" |
| 99 | 24°18'02" W | 182.01 | 224.21 | 62.8 | 32°36'12" |
| 100 | 275°52'07" E | 148.2 | 165.17 | 48.8 | 47°29'57" |

| NO. | BEARING & DISTANCE | ARC LENGTH | CURVATURE | DELTA | |
|-----|--------------------|------------|-----------|-------|------------|
| 1 | 20°17'02" E | 843.07 | 672.27 | 8.08 | 32°36'12" |
| 2 | 205°40'57" E | 258.25 | 281.21 | 44.8 | 205°24'11" |
| 3 | 275°52'07" E | 25.07 | 16.22 | 8.18 | 64°12'07" |
| 4 | 201°18'02" E | 704.23 | 695.23 | 44.8 | 32°36'12" |
| 5 | 10°18'02" W | 61.20 | | | |
| 6 | 10°18'02" W | 10.81 | 23.27 | 61.8 | 10°33'57" |
| 7 | 40°18'02" N | 66.81 | 71.54 | 45.8 | 40°33'57" |
| 8 | 40°18'02" N | 75.07 | | | |
| 9 | 24°18'02" W | 31.20 | 26.13 | 27.8 | 64°12'07" |
| 10 | 24°18'02" W | 182.01 | 224.21 | 62.8 | 32°36'12" |
| 11 | 275°52'07" E | 148.2 | 165.17 | 48.8 | 47°29'57" |
| 12 | 201°18'02" E | 61.20 | | | |
| 13 | 10°18'02" W | 61.20 | | | |
| 14 | 10°18'02" W | 10.81 | 23.27 | 61.8 | 10°33'57" |
| 15 | 40°18'02" N | 66.81 | 71.54 | 45.8 | 40°33'57" |
| 16 | 40°18'02" N | 75.07 | | | |
| 17 | 24°18'02" W | 31.20 | 26.13 | 27.8 | 64°12'07" |
| 18 | 24°18'02" W | 182.01 | 224.21 | 62.8 | 32°36'12" |
| 19 | 275°52'07" E | 148.2 | 165.17 | 48.8 | 47°29'57" |
| 20 | 201°18'02" E | 61.20 | | | |
| 21 | 10°18'02" W | 61.20 | | | |
| 22 | 10°18'02" W | 10.81 | 23.27 | 61.8 | 10°33'57" |
| 23 | 40°18'02" N | 66.81 | 71.54 | 45.8 | 40°33'57" |
| 24 | 40°18'02" N | 75.07 | | | |
| 25 | 24°18'02" W | 31.20 | 26.13 | 27.8 | 64°12'07" |
| 26 | 24°18'02" W | 182.01 | 224.21 | 62.8 | 32°36'12" |
| 27 | 275°52'07" E | 148.2 | 165.17 | 48.8 | 47°29'57" |
| 28 | 201°18'02" E | 61.20 | | | |
| 29 | 10°18'02" W | 61.20 | | | |
| 30 | 10°18'02" W | 10.81 | 23.27 | 61.8 | 10°33'57" |
| 31 | 40°18'02" N | 66.81 | 71.54 | 45.8 | 40°33'57" |
| 32 | 40°18'02" N | 75.07 | | | |
| 33 | 24°18'02" W | 31.20 | 26.13 | 27.8 | 64°12'07" |
| 34 | 24°18'02" W | 182.01 | 224.21 | 62.8 | 32°36'12" |
| 35 | 275°52'07" E | 148.2 | 165.17 | 48.8 | 47°29'57" |
| 36 | 201°18'02" E | 61.20 | | | |
| 37 | 10°18'02" W | 61.20 | | | |
| 38 | 10°18'02" W | 10.81 | 23.27 | 61.8 | 10°33'57" |
| 39 | 40°18'02" N | 66.81 | 71.54 | 45.8 | 40°33'57" |
| 40 | 40°18'02" N | 75.07 | | | |
| 41 | 24°18'02" W | 31.20 | 26.13 | 27.8 | 64°12'07" |
| 42 | 24°18'02" W | 182.01 | 224.21 | 62.8 | 32°36'12" |
| 43 | 275°52'07" E | 148.2 | 165.17 | 48.8 | 47°29'57" |
| 44 | 201°18'02" E | 61.20 | | | |
| 45 | 10°18'02" W | 61.20 | | | |
| 46 | 10°18'02" W | 10.81 | 23.27 | 61.8 | 10°33'57" |
| 47 | 40°18'02" N | 66.81 | 71.54 | 45.8 | 40°33'57" |
| 48 | 40°18'02" N | 75.07 | | | |
| 49 | 24°18'02" W | 31.20 | 26.13 | 27.8 | 64°12'07" |
| 50 | 24°18'02" W | 182.01 | 224.21 | 62.8 | 32°36'12" |
| 51 | 275°52'07" E | 148.2 | 165.17 | 48.8 | 47°29'57" |
| 52 | 201°18'02" E | 61.20 | | | |
| 53 | 10°18'02" W | 61.20 | | | |
| 54 | 10°18'02" W | 10.81 | 23.27 | 61.8 | 10°33'57" |
| 55 | 40°18'02" N | 66.81 | 71.54 | 45.8 | 40°33'57" |
| 56 | 40°18'02" N | 75.07 | | | |
| 57 | 24°18'02" W | 31.20 | 26.13 | 27.8 | 64°12'07" |
| 58 | 24°18'02" W | 182.01 | 224.21 | 62.8 | 32°36'12" |
| 59 | 275°52'07" E | 148.2 | 165.17 | 48.8 | 47°29'57" |
| 60 | 201°18'02" E | 61.20 | | | |
| 61 | 10°18'02" W | 61.20 | | | |
| 62 | 10°18'02" W | 10.81 | 23.27 | 61.8 | 10°33'57" |
| 63 | 40°18'02" N | 66.81 | 71.54 | 45.8 | 40°33'57" |
| 64 | 40°18'02" N | 75.07 | | | |
| 65 | 24°18'02" W | 31.20 | 26.13 | 27.8 | 64°12'07" |
| 66 | 24°18'02" W | 182.01 | 224.21 | 62.8 | 32°36'12" |
| 67 | 275°52'07" E | 148.2 | 165.17 | 48.8 | 47°29'57" |
| 68 | 201°18'02" E | 61.20 | | | |
| 69 | 10°18'02" W | 61.20 | | | |
| 70 | 10°18'02" W | 10.81 | 23.27 | 61.8 | 10°33'57" |
| 71 | 40°18'02" N | 66.81 | 71.54 | 45.8 | 40°33'57" |
| 72 | 40°18'02" N | 75.07 | | | |
| 73 | 24°18'02" W | 31.20 | 26.13 | 27.8 | 64°12'07" |
| 74 | | | | | |



Promontory Village Center

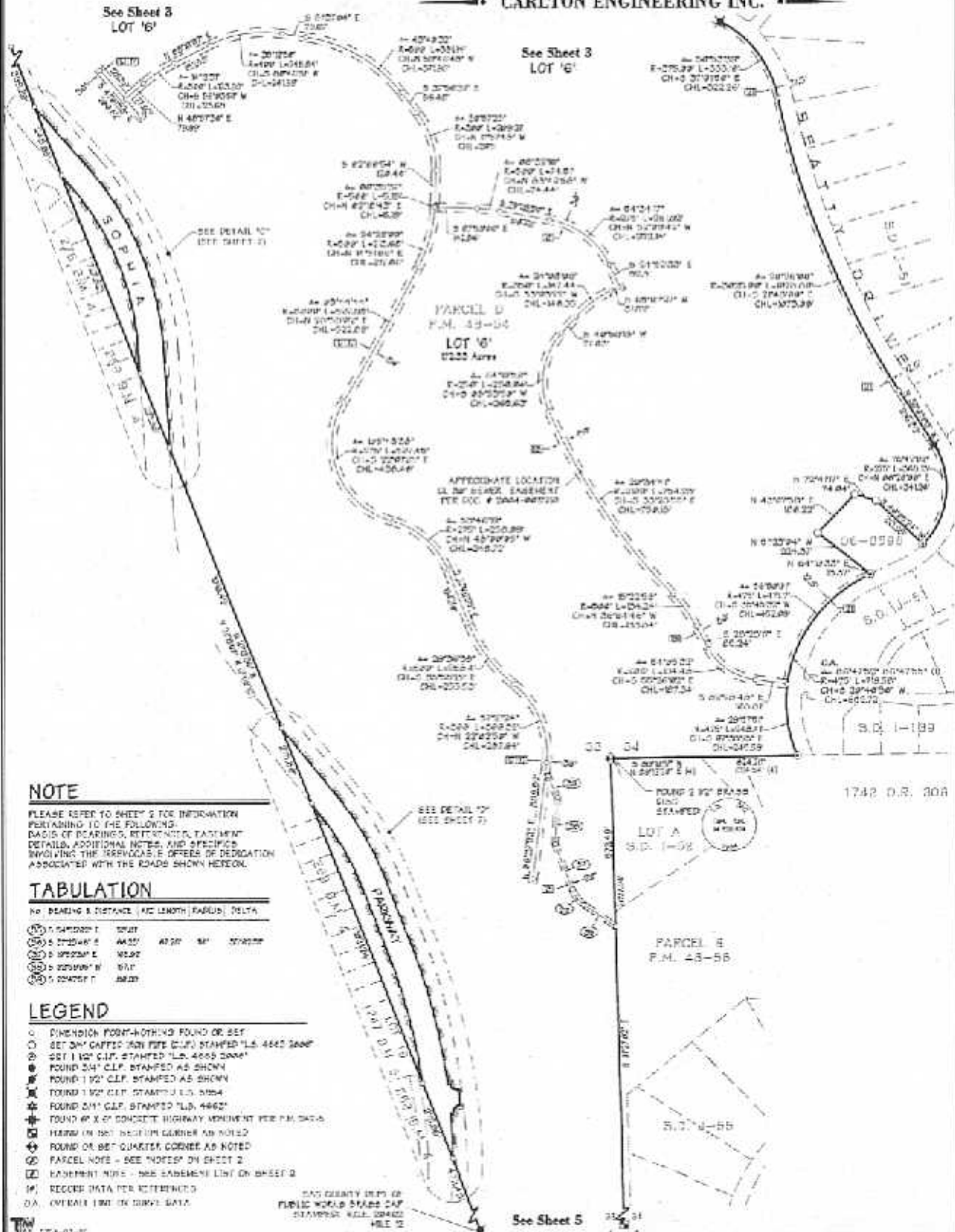
BEING A PORTION OF PARCEL 'D' OF P.M. 48-54, BEING A PORTION OF SECTIONS 27, 28, 33 & 34, T. 10 N., R. 8 E., M.D.M., & A PORTION OF SECTIONS 3 & 10 T. 9 N., R. 8 E., M.D.M.

COUNTY OF EL DORADO, STATE OF CALIFORNIA

MARCH, 2007 SCALE: 1" = 200'

SHEET 4 OF 7

CARLTON ENGINEERING INC.



NOTE

PLEASE REFER TO SHEET 2 FOR INFORMATION PERTAINING TO THE FOLLOWING: BASIS OF PLANNING, REVISIONS, EASEMENT DETAILS, ADDITIONAL NOTES, AND SPECIFICS INVOLVING THE TRAFFICABLE WIDTHS OF DEGRADATION ASSOCIATED WITH THE ROADS SHOWN HEREON.

TABULATION

| No. | BEARING & DISTANCE | ARC LENGTH | PARCEL | DELTA |
|-----|--------------------|------------|--------|-------|
| 1 | S 04°00'00" E | 50.00 | | |
| 2 | S 02°00'00" E | 44.52 | 41.20' | 51' |
| 3 | S 02°00'00" E | 100.00 | | |
| 4 | S 02°00'00" W | 50.00 | | |
| 5 | S 04°00'00" E | 44.52 | | |

LEGEND

- DIMENSION POINT-NOTHING FOUND OR SET
- SET 3/4" CAPTED IRON PIPE (C.I.P.) STAMPED "L.S. 4460 2000"
- SET 1 1/2" C.I.P. STAMPED "L.S. 4460 2000"
- ROUND 3/4" C.I.P. STAMPED AS SHOWN
- ROUND 1 1/2" C.I.P. STAMPED AS SHOWN
- ROUND 1 3/4" C.I.P. STAMPED U.S. 5184
- ROUND 2 1/4" C.I.P. STAMPED "L.S. 4460"
- FOUND 6" X 6" CONCRETE HIGHWAY ALIGNMENT PER P.M. DATA
- MARK ON 180° BENCH MARK CORNER AS NOTED
- FOUND OR SET QUARTZ CORNER AS NOTED
- PARCEL NOTE - SEE "NOTES" ON SHEET 2
- EASEMENT NOTE - SEE EASEMENT LIST ON SHEET 2
- RECORD DATA FOR REFERENCE
- A. OVERLAP INFO ON DRIVE DATA



SAC COUNTY DEPT. OF PUBLIC WORKS TRASS CAT STAMPED R.C.S. 06462 MILE 10

Promontory Village Center

BEING A PORTION OF PARCEL 'D' OF P.M. 48-54, BEING A PORTION OF SECTIONS 27, 28, 33 & 34, T. 18 N., R. 8 E., M.D.M. & A PORTION OF SECTIONS 3 & 10 T. 8 N., R. 8 E., M.D.M.

COUNTY OF EL DORADO, STATE OF CALIFORNIA
MARCH, 2007 SCALE: 1" = 200'
SHEET 5 OF 7

CARLTON ENGINEERING INC.

NOTE

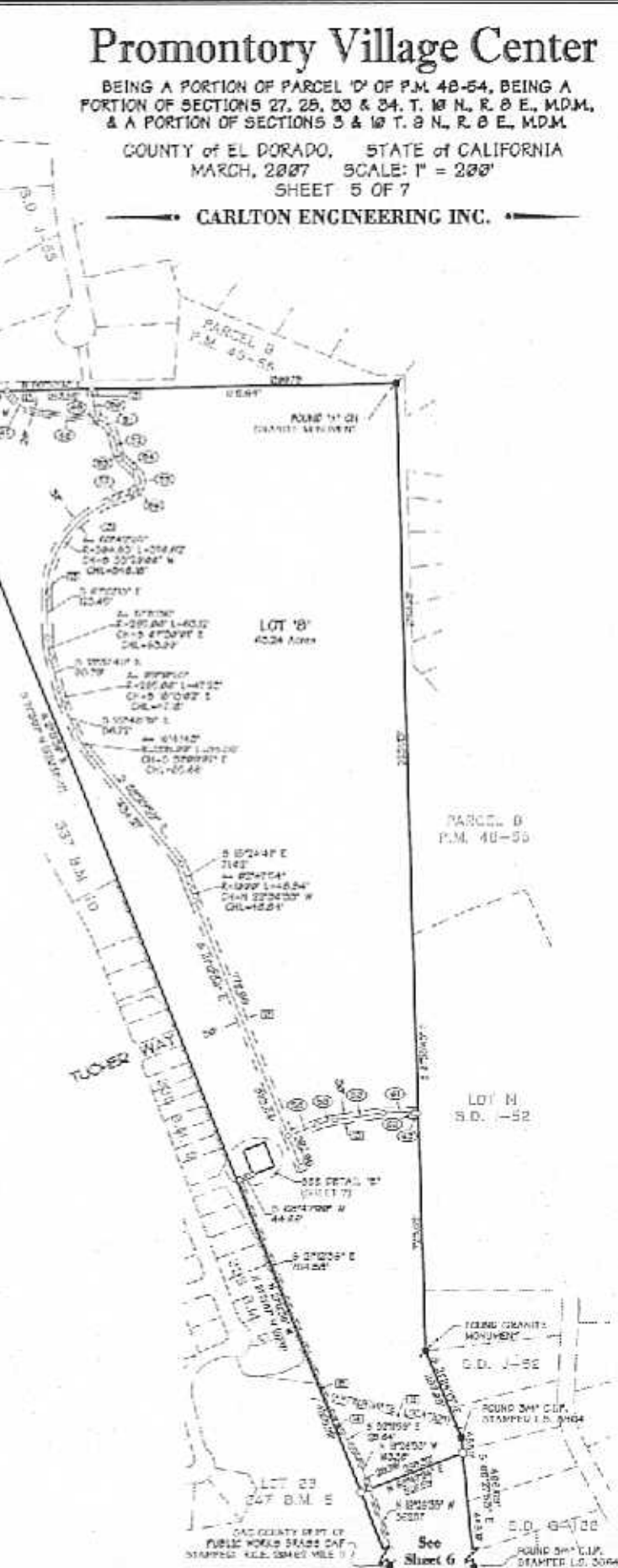
PLEASE REFER TO SHEET 3 FOR INFORMATION PERTAINING TO THE FOLLOWING:
PAGE 10 OF BEARING & DISTANCE, EASEMENT DETAILS, ADDITIONAL NOTES, AND SPECIFICATIONS INVOLVING THE IRREDEEMABLE OFFERS OF CONDEMNATION ASSOCIATED WITH THE 100-10 HIGHWAY PROJECT.

LEGEND

- DIMENSION POINT HOUSING FOUND OR SET
- SET 3/4" COPPED IRON PIPE CLIP STAMPED "L.S. 4662 5888"
- SET 1 1/2" C.I.P. STAMPED "L.S. 4662 5888"
- FOUND 3/4" C.I.P. STAMPED AS SHOWN
- FOUND 1 1/2" C.I.P. STAMPED AS SHOWN
- FOUND 1 1/2" C.I.P. STAMPED L.S. 6054
- ★ FOUND 3/4" C.I.P. STAMPED "L.S. 4000"
- ◆ FOUND 4" X 8" CONCRETE HIGHWAY MONUMENT PER P.A. 247-8
- FOUND OR SET SECTION CORNER AS NOTED
- ◆ FOUND OR SET QUARTER CORNER AS NOTED
- PARCEL NOTE - SEE "NOTES" ON SHEET 2
- EASEMENT NOTE - SEE EASEMENT LIST ON SHEET 2
- RECORDED DATA PER EXHIBIT 100
- A. OVERALL LINE OR CURVE DATA

TABULATION

| NO. | BEARING & DISTANCE | ARC LENGTH | CHORD | DELTA |
|-----|--------------------|------------|-------|-----------|
| 1 | S 87°02'00" W | 634' | 634' | 90°00'00" |
| 2 | S 87°01'00" W | 1843' | 1843' | 90°00'00" |
| 3 | S 87°01'00" W | 1843' | 1843' | 90°00'00" |
| 4 | S 87°01'00" W | 1843' | 1843' | 90°00'00" |
| 5 | S 87°01'00" W | 1843' | 1843' | 90°00'00" |
| 6 | S 87°01'00" W | 1843' | 1843' | 90°00'00" |
| 7 | S 87°01'00" W | 1843' | 1843' | 90°00'00" |
| 8 | S 87°01'00" W | 1843' | 1843' | 90°00'00" |
| 9 | S 87°01'00" W | 1843' | 1843' | 90°00'00" |
| 10 | S 87°01'00" W | 1843' | 1843' | 90°00'00" |
| 11 | S 87°01'00" W | 1843' | 1843' | 90°00'00" |
| 12 | S 87°01'00" W | 1843' | 1843' | 90°00'00" |
| 13 | S 87°01'00" W | 1843' | 1843' | 90°00'00" |
| 14 | S 87°01'00" W | 1843' | 1843' | 90°00'00" |
| 15 | S 87°01'00" W | 1843' | 1843' | 90°00'00" |
| 16 | S 87°01'00" W | 1843' | 1843' | 90°00'00" |
| 17 | S 87°01'00" W | 1843' | 1843' | 90°00'00" |
| 18 | S 87°01'00" W | 1843' | 1843' | 90°00'00" |
| 19 | S 87°01'00" W | 1843' | 1843' | 90°00'00" |
| 20 | S 87°01'00" W | 1843' | 1843' | 90°00'00" |
| 21 | S 87°01'00" W | 1843' | 1843' | 90°00'00" |
| 22 | S 87°01'00" W | 1843' | 1843' | 90°00'00" |
| 23 | S 87°01'00" W | 1843' | 1843' | 90°00'00" |
| 24 | S 87°01'00" W | 1843' | 1843' | 90°00'00" |
| 25 | S 87°01'00" W | 1843' | 1843' | 90°00'00" |
| 26 | S 87°01'00" W | 1843' | 1843' | 90°00'00" |
| 27 | S 87°01'00" W | 1843' | 1843' | 90°00'00" |
| 28 | S 87°01'00" W | 1843' | 1843' | 90°00'00" |
| 29 | S 87°01'00" W | 1843' | 1843' | 90°00'00" |
| 30 | S 87°01'00" W | 1843' | 1843' | 90°00'00" |
| 31 | S 87°01'00" W | 1843' | 1843' | 90°00'00" |
| 32 | S 87°01'00" W | 1843' | 1843' | 90°00'00" |
| 33 | S 87°01'00" W | 1843' | 1843' | 90°00'00" |
| 34 | S 87°01'00" W | 1843' | 1843' | 90°00'00" |
| 35 | S 87°01'00" W | 1843' | 1843' | 90°00'00" |
| 36 | S 87°01'00" W | 1843' | 1843' | 90°00'00" |
| 37 | S 87°01'00" W | 1843' | 1843' | 90°00'00" |
| 38 | S 87°01'00" W | 1843' | 1843' | 90°00'00" |
| 39 | S 87°01'00" W | 1843' | 1843' | 90°00'00" |
| 40 | S 87°01'00" W | 1843' | 1843' | 90°00'00" |
| 41 | S 87°01'00" W | 1843' | 1843' | 90°00'00" |
| 42 | S 87°01'00" W | 1843' | 1843' | 90°00'00" |
| 43 | S 87°01'00" W | 1843' | 1843' | 90°00'00" |
| 44 | S 87°01'00" W | 1843' | 1843' | 90°00'00" |
| 45 | S 87°01'00" W | 1843' | 1843' | 90°00'00" |
| 46 | S 87°01'00" W | 1843' | 1843' | 90°00'00" |
| 47 | S 87°01'00" W | 1843' | 1843' | 90°00'00" |
| 48 | S 87°01'00" W | 1843' | 1843' | 90°00'00" |
| 49 | S 87°01'00" W | 1843' | 1843' | 90°00'00" |
| 50 | S 87°01'00" W | 1843' | 1843' | 90°00'00" |
| 51 | S 87°01'00" W | 1843' | 1843' | 90°00'00" |
| 52 | S 87°01'00" W | 1843' | 1843' | 90°00'00" |
| 53 | S 87°01'00" W | 1843' | 1843' | 90°00'00" |
| 54 | S 87°01'00" W | 1843' | 1843' | 90°00'00" |
| 55 | S 87°01'00" W | 1843' | 1843' | 90°00'00" |
| 56 | S 87°01'00" W | 1843' | 1843' | 90°00'00" |
| 57 | S 87°01'00" W | 1843' | 1843' | 90°00'00" |
| 58 | S 87°01'00" W | 1843' | 1843' | 90°00'00" |
| 59 | S 87°01'00" W | 1843' | 1843' | 90°00'00" |
| 60 | S 87°01'00" W | 1843' | 1843' | 90°00'00" |
| 61 | S 87°01'00" W | 1843' | 1843' | 90°00'00" |
| 62 | S 87°01'00" W | 1843' | 1843' | 90°00'00" |
| 63 | S 87°01'00" W | 1843' | 1843' | 90°00'00" |
| 64 | S 87°01'00" W | 1843' | 1843' | 90°00'00" |
| 65 | S 87°01'00" W | 1843' | 1843' | 90°00'00" |
| 66 | S 87°01'00" W | 1843' | 1843' | 90°00'00" |
| 67 | S 87°01'00" W | 1843' | 1843' | 90°00'00" |
| 68 | S 87°01'00" W | 1843' | 1843' | 90°00'00" |
| 69 | S 87°01'00" W | 1843' | 1843' | 90°00'00" |
| 70 | S 87°01'00" W | 1843' | 1843' | 90°00'00" |



See Sheet 6

SAC COUNTY DEPT. OF PUBLIC WORKS TRASS CAT STAMPED R.C.S. 06462 MILE 10

Promontory Village Center

BEING A PORTION OF PARCEL 1st OF P.M. 48-54, BEING A PORTION OF SECTIONS 27, 28, 33 & 34, T. 19 N. R. 8 E., MDM. & A PORTION OF SECTIONS 3 & 10 T. 9 N., R. 8 E., MDM.

COUNTY OF EL DORADO, STATE OF CALIFORNIA
MARCH, 2007 SCALE: 1" = 200'
SHEET 6 OF 7

—••••• CARLTON ENGINEERING INC. —•••••

NOTE

PLEASE REFER TO SHEET 2 FOR INFORMATION PERTAINING TO THE FOLLOWING:
BASIS OF DESIGN, REFERENCE, EASEMENT DETAILS, ADDITIONAL NOTES AND SPECIFICATIONS INVOLVING THE IRREVOCABLE OFFERS OF DEDICATION ASSOCIATED WITH THE ROADS SHOWN HEREON.

LEGEND

- > DIMENSION POINT-NON-BIG FOUND OR SET
- SET 3/4" CAPPED IRON PIPE (C.I.P.) STAMPER "L.S. 4400 2000"
- SET 1 1/2" C.I.P. STAMPER "L.S. 4460 2000"
- FOUND 3/4" C.I.P. STAMPER AS SHOWN
- FOUND 1 1/2" C.I.P. STAMPER AS SHOWN
- ★ FOUND 1 1/2" C.I.P. STAMPER "L.S. 2000"
- ★ FOUND 3/4" C.I.P. STAMPER "L.S. 4460"
- ◆ FOUND 4" x 2 1/2" CONCRETE HIGHWAY MONUMENT PER P.M. 247-0
- ⊕ FOUND OR SET STATION CORNER AS NOTED
- ⊕ FOUND OR SET QUARTER CORNER AS NOTED
- Ⓜ PARCEL NOTE - SEE "NOTES" ON SHEET 2
- Ⓜ EASEMENT NOTE - SEE "EASEMENT LIST" ON SHEET 2
- Ⓜ RECORD DATA PER REFERENCES
- CA. OVERALL LINE OF CURVE DATA

See Sheet 5

LOT 23
2.47 B.M. 5

SAC COUNTY DEPT. OF PUBLIC
WORKS BRASS CAP
STAMPER: E.D. 20492 HILL 8

LOT 23
2.47 B.M. 5

APPROXIMATE LOCATION OF
PAST TIME EASEMENT PER (21)



REMAINDER
P.M. 28-33

LOT 19
2.22 Acres

REMAINDER
P.M. 28-33

7/8" CONG. I.P. MONUMENT
PER P.M. 247-0

Promontory Village Center

BEING A PORTION OF PARCEL D' OF P.M. 48-54, BEING A PORTION OF SECTIONS 27, 28, 33 & 34, T. 6 N., R. 6 E., M.D.M., & A PORTION OF SECTIONS 9 & 10 T. 9 N., R. 5 E., M.D.M.

COUNTY OF EL DORADO, STATE OF CALIFORNIA

MARCH, 2007 SHEET 7 OF 7

CARLTON ENGINEERING INC.

NOTE

PLEASE REFER TO SHEET 6 FOR INFORMATION PERTAINING TO THE FOLLOWING: ELEVATIONS, EASEMENT DETAILS, ADDITIONAL NOTES, AND SPECIFIED INVOLVING THE RELEVANT OFFICE OF RECORDATION ASSOCIATED WITH THE CONVEYANCE HEREIN.

LEGEND

- 1. SHOWN HEREIN FROM THE RECORD OF SALE
- 2. SET 100' CIRC. STAKE TO THE EAST CORNER OF LOT 1
- 3. SET 100' CIRC. STAKE TO THE WEST CORNER OF LOT 1
- 4. FOUND 100' CIRC. STAKE AS SHOWN
- 5. FOUND 100' CIRC. STAKE AS SHOWN
- 6. FOUND 100' CIRC. STAKE AS SHOWN
- 7. FOUND 100' CIRC. STAKE AS SHOWN
- 8. FOUND 100' CIRC. STAKE AS SHOWN
- 9. FOUND 100' CIRC. STAKE AS SHOWN
- 10. FOUND 100' CIRC. STAKE AS SHOWN
- 11. FOUND 100' CIRC. STAKE AS SHOWN
- 12. FOUND 100' CIRC. STAKE AS SHOWN
- 13. FOUND 100' CIRC. STAKE AS SHOWN
- 14. FOUND 100' CIRC. STAKE AS SHOWN
- 15. FOUND 100' CIRC. STAKE AS SHOWN
- 16. FOUND 100' CIRC. STAKE AS SHOWN
- 17. FOUND 100' CIRC. STAKE AS SHOWN
- 18. FOUND 100' CIRC. STAKE AS SHOWN
- 19. FOUND 100' CIRC. STAKE AS SHOWN
- 20. FOUND 100' CIRC. STAKE AS SHOWN
- 21. FOUND 100' CIRC. STAKE AS SHOWN
- 22. FOUND 100' CIRC. STAKE AS SHOWN
- 23. FOUND 100' CIRC. STAKE AS SHOWN
- 24. FOUND 100' CIRC. STAKE AS SHOWN
- 25. FOUND 100' CIRC. STAKE AS SHOWN
- 26. FOUND 100' CIRC. STAKE AS SHOWN
- 27. FOUND 100' CIRC. STAKE AS SHOWN
- 28. FOUND 100' CIRC. STAKE AS SHOWN
- 29. FOUND 100' CIRC. STAKE AS SHOWN
- 30. FOUND 100' CIRC. STAKE AS SHOWN
- 31. FOUND 100' CIRC. STAKE AS SHOWN
- 32. FOUND 100' CIRC. STAKE AS SHOWN
- 33. FOUND 100' CIRC. STAKE AS SHOWN
- 34. FOUND 100' CIRC. STAKE AS SHOWN
- 35. FOUND 100' CIRC. STAKE AS SHOWN
- 36. FOUND 100' CIRC. STAKE AS SHOWN
- 37. FOUND 100' CIRC. STAKE AS SHOWN
- 38. FOUND 100' CIRC. STAKE AS SHOWN
- 39. FOUND 100' CIRC. STAKE AS SHOWN
- 40. FOUND 100' CIRC. STAKE AS SHOWN
- 41. FOUND 100' CIRC. STAKE AS SHOWN
- 42. FOUND 100' CIRC. STAKE AS SHOWN
- 43. FOUND 100' CIRC. STAKE AS SHOWN
- 44. FOUND 100' CIRC. STAKE AS SHOWN
- 45. FOUND 100' CIRC. STAKE AS SHOWN
- 46. FOUND 100' CIRC. STAKE AS SHOWN
- 47. FOUND 100' CIRC. STAKE AS SHOWN
- 48. FOUND 100' CIRC. STAKE AS SHOWN
- 49. FOUND 100' CIRC. STAKE AS SHOWN
- 50. FOUND 100' CIRC. STAKE AS SHOWN
- 51. FOUND 100' CIRC. STAKE AS SHOWN
- 52. FOUND 100' CIRC. STAKE AS SHOWN
- 53. FOUND 100' CIRC. STAKE AS SHOWN
- 54. FOUND 100' CIRC. STAKE AS SHOWN
- 55. FOUND 100' CIRC. STAKE AS SHOWN
- 56. FOUND 100' CIRC. STAKE AS SHOWN
- 57. FOUND 100' CIRC. STAKE AS SHOWN
- 58. FOUND 100' CIRC. STAKE AS SHOWN
- 59. FOUND 100' CIRC. STAKE AS SHOWN
- 60. FOUND 100' CIRC. STAKE AS SHOWN
- 61. FOUND 100' CIRC. STAKE AS SHOWN
- 62. FOUND 100' CIRC. STAKE AS SHOWN
- 63. FOUND 100' CIRC. STAKE AS SHOWN
- 64. FOUND 100' CIRC. STAKE AS SHOWN
- 65. FOUND 100' CIRC. STAKE AS SHOWN
- 66. FOUND 100' CIRC. STAKE AS SHOWN
- 67. FOUND 100' CIRC. STAKE AS SHOWN
- 68. FOUND 100' CIRC. STAKE AS SHOWN
- 69. FOUND 100' CIRC. STAKE AS SHOWN
- 70. FOUND 100' CIRC. STAKE AS SHOWN
- 71. FOUND 100' CIRC. STAKE AS SHOWN
- 72. FOUND 100' CIRC. STAKE AS SHOWN
- 73. FOUND 100' CIRC. STAKE AS SHOWN
- 74. FOUND 100' CIRC. STAKE AS SHOWN
- 75. FOUND 100' CIRC. STAKE AS SHOWN
- 76. FOUND 100' CIRC. STAKE AS SHOWN
- 77. FOUND 100' CIRC. STAKE AS SHOWN
- 78. FOUND 100' CIRC. STAKE AS SHOWN
- 79. FOUND 100' CIRC. STAKE AS SHOWN
- 80. FOUND 100' CIRC. STAKE AS SHOWN
- 81. FOUND 100' CIRC. STAKE AS SHOWN
- 82. FOUND 100' CIRC. STAKE AS SHOWN
- 83. FOUND 100' CIRC. STAKE AS SHOWN
- 84. FOUND 100' CIRC. STAKE AS SHOWN
- 85. FOUND 100' CIRC. STAKE AS SHOWN
- 86. FOUND 100' CIRC. STAKE AS SHOWN
- 87. FOUND 100' CIRC. STAKE AS SHOWN
- 88. FOUND 100' CIRC. STAKE AS SHOWN
- 89. FOUND 100' CIRC. STAKE AS SHOWN
- 90. FOUND 100' CIRC. STAKE AS SHOWN
- 91. FOUND 100' CIRC. STAKE AS SHOWN
- 92. FOUND 100' CIRC. STAKE AS SHOWN
- 93. FOUND 100' CIRC. STAKE AS SHOWN
- 94. FOUND 100' CIRC. STAKE AS SHOWN
- 95. FOUND 100' CIRC. STAKE AS SHOWN
- 96. FOUND 100' CIRC. STAKE AS SHOWN
- 97. FOUND 100' CIRC. STAKE AS SHOWN
- 98. FOUND 100' CIRC. STAKE AS SHOWN
- 99. FOUND 100' CIRC. STAKE AS SHOWN
- 100. FOUND 100' CIRC. STAKE AS SHOWN

