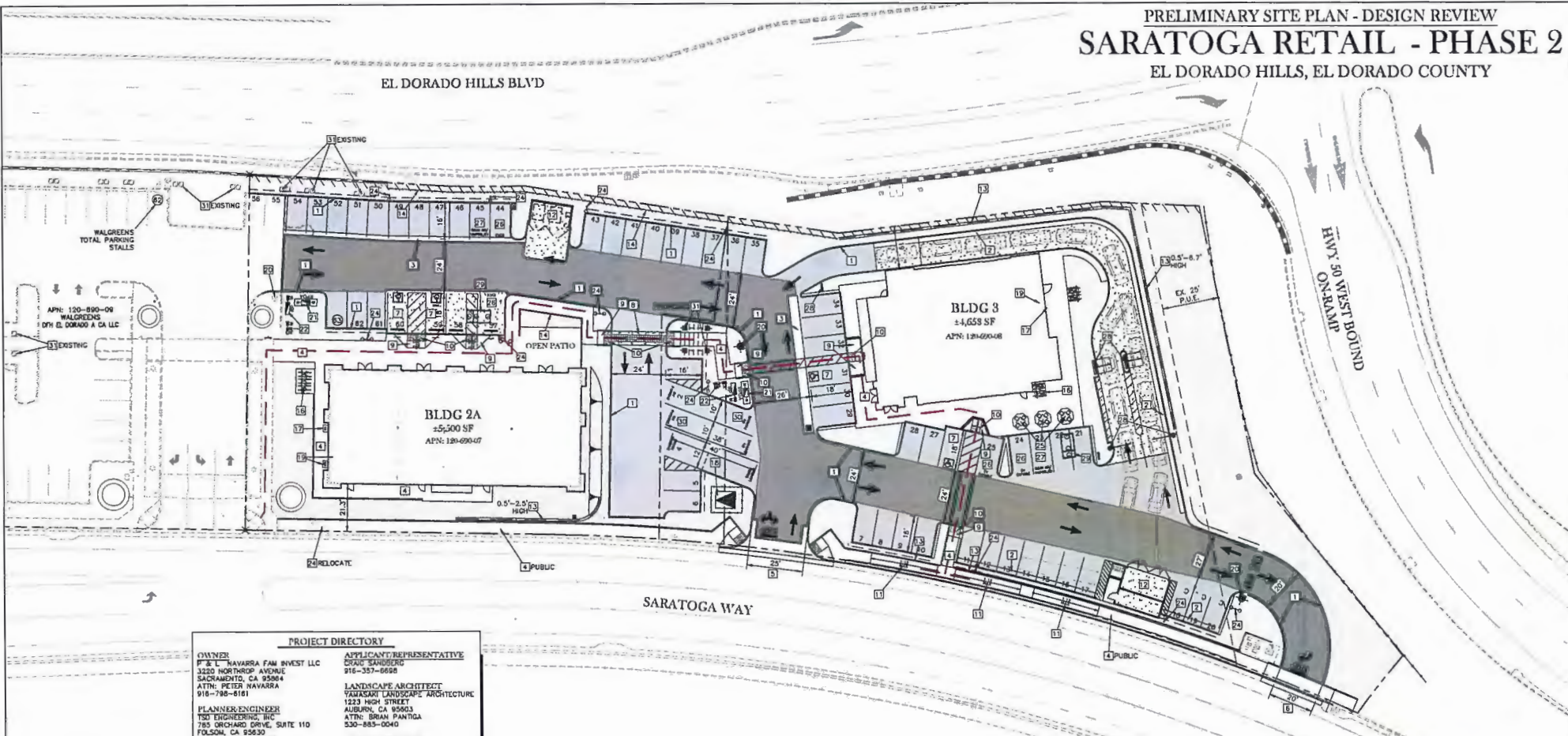


PRELIMINARY SITE PLAN - DESIGN REVIEW  
**SARATOGA RETAIL - PHASE 2**  
 EL DORADO HILLS, EL DORADO COUNTY



**PROJECT DIRECTORY**

**OWNER:**  
 P & L NAVARRA FAM INVEST LLC  
 3220 NORTHROP AVENUE  
 SACRAMENTO, CA 95804  
 ATTN: PETER NAVARRA  
 916-786-8161

**APPLICANT REPRESENTATIVE:**  
 DAVID SANDBERG  
 916-357-6698

**LANDSCAPE ARCHITECT:**  
 WARDSON LANDSCAPE ARCHITECTURE  
 1223 HIGH STREET  
 AUBURN, CA 95603  
 ATTN: BRIAN PANITKA  
 530-883-0040

**PLANNER/ENGINEER:**  
 TSE ENGINEERING INC  
 785 ORCHARD DRIVE, SUITE 110  
 FOLSOM, CA 95630  
 ATTN: CHRIS SCHULZE  
 916-608-0707 x 101

**TRAFFIC ENGINEER:**  
 MATT WEIR  
 RUMLEY-HORN  
 916-859-3917

**ARCHITECT:**  
 C500A  
 1450 HARBOR BLVD, SUITE A  
 WEST SACRAMENTO, CA 95691  
 ATTN: STEVE WAKEMAN  
 916-527-8970

**ENVIRONMENTAL ENGINEER:**  
 ROBERT EDGORTON  
 HELIX ENVIRONMENTAL PLANNING, INC.  
 916-365-8713

**PROJECT SUMMARY-PHASE 2**

**PARCEL SUMMARY**

APN:	120-890-07
LAND AREA: EXISTING	32,578 SF
LAND AREA: PROPOSED	29,560 SF
BUILDING 2A (CPA)	±5,500 SF
(PARKING REQUIRED 19 SPACES @/300 SF)	
LOT COVERAGE	18.5%

**APN: 120-890-08**

LAND AREA: EXISTING	41,917 SF
LAND AREA: PROPOSED	44,834 SF
BUILDING 3 (CPA)	±4,658 SF
(PARKING REQUIRED 17 SPACES @/300 SF)	
LOT COVERAGE	10.4%

**PARKING SUMMARY**

STANDARD (9'x18 OR 17')	53
RV (10'x24)	2
LOADING (10'x40)	1
COMPACT (9'x18 OR 14')	3
ACCESSIBLE (8'x14)	4
TOTAL PROPOSED	63
(PARKING REQUIRED 34)	

**CALGREEN REQUIREMENTS**

PARKING FOR FUEL EFFICIENT VEHICLE = 8  
 PARKING FOR EV CAPABLE = 4 (1 VAN)

**BIKE PARKING SUMMARY**

SHORT-TERM BIKE RACKS	13
-----------------------	----

- CONSTRUCTION NOTES**
- 1) VERTICAL CURB
  - 2) COMBINED CURB & GUTTER
  - 3) 2" VALLEY GUTTER
  - 4) CONCRETE SIDEWALK
  - 5) COMMERCIAL DRIVEWAY PER EL DORADO COUNTY STD PLAN 110 CURB RAMP PER CALTRANS STD DTL A8A - CASE G
  - 6) CONSTRUCT COMMERCIAL DRIVEWAY PER EL DORADO COUNTY STD PLAN 103C
  - 7) ACCESSIBLE PARKING STALL ACCESSIBLE AISLE, WHEELSTOP & SIGN R-99.
  - 8) STAMPED ASPHALT/PPC CROSSWALK COLOR & PATTERN TO MATCH ADJACENT DRIVE AISLE (MAX. CROSS SLOPE 2%, LONGITUDINAL SLOPE 4.9% MAX)
  - 9) ACCESSIBLE CURB RAMP
  - 10) CAST IN PLACE DETECTABLE WARNING STRIP 36" DEEP, FULL WIDTH \*RUMOR TILE\* FEDERAL YELLOW (Ø SARATOGA); \*TEKWAY\* DARK TERRACOTTA (ØN-SITE)
  - 11) ACCESSIBLE PEDESTRIAN RAMP W/ HANDRAIL/GUARDRAIL
  - 12) TRASH ENCLOSURE
  - 13) RETAINING WALL w/ DECORATIVE FENCE ON TOP OF WALL
  - 14) DECORATIVE METAL FENCE
  - 15) MONUMENT SIGN
  - 16) BICYCLE RACKS
  - 17) GAS METER
  - 18) TRANSFORMER PAD LOCATION
  - 19) ELECTRICAL METER & SWITCH GEAR LOCATION
  - 20) FIRE HYDRANT
  - 21) FIRE DEPARTMENT CONNECTION
  - 22) WATER METER (DOMESTIC & LANDSCAPE)
  - 23) LANDSCAPE CONTROLLER
  - 24) SITE LIGHTING
  - 25) LANDSCAPE/HARDSCAPE AMENITIES
  - 26) EV CAPABLE PARKING STALL
  - 27) FUEL EFFICIENT PARKING STALL
  - 28) DRIVE THRU AMENITIES
  - 29) GREASE INTERCEPTOR
  - 30) RV PARKING
  - 31) OVERHEAD TRELLIS

**PAVEMENT LEGEND**

REFERENCE GEOTECHNICAL REPORT FOR ALL FILL COMPACTION AND SUBGRADE COMPACTION REQUIREMENTS.

[Symbol]	3" MIN. AC ON 4" CLASS II AB, T.I.=4.5 (R=35)
[Symbol]	5" MIN. AC ON 10" CLASS II AB, T.I.=8.0 (R=35)
[Symbol]	6" PCC ON 6" CLASS II AB
[Symbol]	4" PCC SIDEWALK
[Symbol]	ENHANCED PCC SIDEWALK/CROSSWALK
[Symbol]	LANDSCAPING: SEE LANDSCAPE PLANS & SPECIFICATIONS FOR DETAILS
[Symbol]	ACCESSIBLE PATH OF TRAVEL

APPROVED  
 EL DORADO COUNTY  
 PLANNING COMMISSION  
 Board of Supervisors  
 DATE October 9, 2018 PRELIMINARY SITE PLAN  
 MAY 7, 2018  
 REVISED JULY 26, 2018

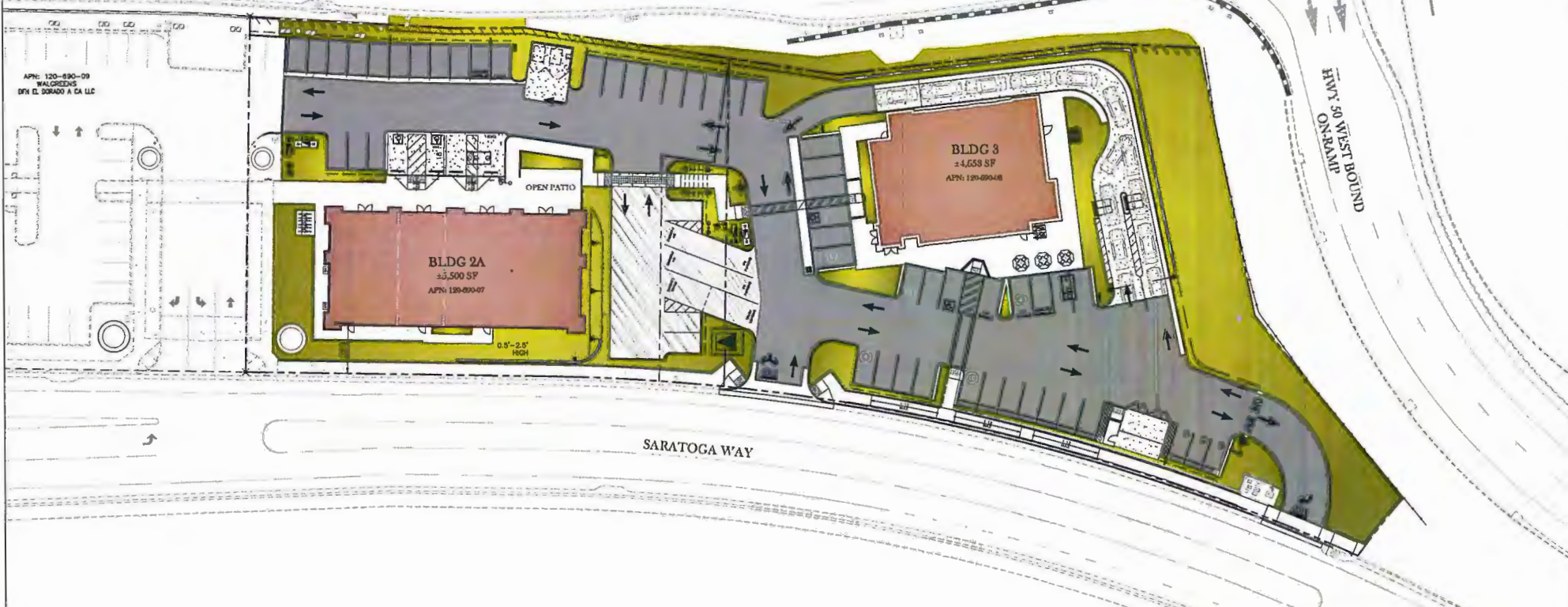
BY Tiffany Schmidt  
 EXECUTIVE SECRET

**TSD ENGINEERING, INC.**  
 785 Orchard Dr, Suite 110  
 Folsom, CA 95630  
 Phone: (916) 608-0707  
 Fax: (916) 608-0701

scale: 1"=20'

PRELIMINARY SITE PLAN - COLOR - DESIGN REVIEW  
**SARATOGA RETAIL - PHASE 2**  
 EL DORADO HILLS, EL DORADO COUNTY

EL DORADO HILLS BLVD

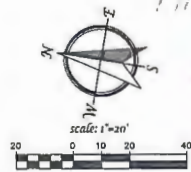


APPROVED  
 EL DORADO COUNTY  
**PLANNING COMMISSION**  
*Board of Supervisors*  
 DATE: October 9, 2018  
 BY: *Tiffany Schmid* **COMT**  
 EXECUTIVE SECRETARY

Exhibit H

**PAVEMENT LEGEND**  
 REFERENCE GEOTECHNICAL REPORT FOR ALL FILL COMPACTION AND SUBGRADE COMPACTION REQUIREMENTS.

	AC PAVEMENT
	PCC PAVEMENT
	PCC SIDEWALK
	ENHANCED PCC SIDEWALK/GROSSWALK
	LANDSCAPING; SEE LANDSCAPE PLANS & SPECIFICATIONS FOR DETAILS.



PRELIMINARY SITE PLAN  
 JUNE 26, 2018

**TSD ENGINEERING, INC.**  
 expect more.

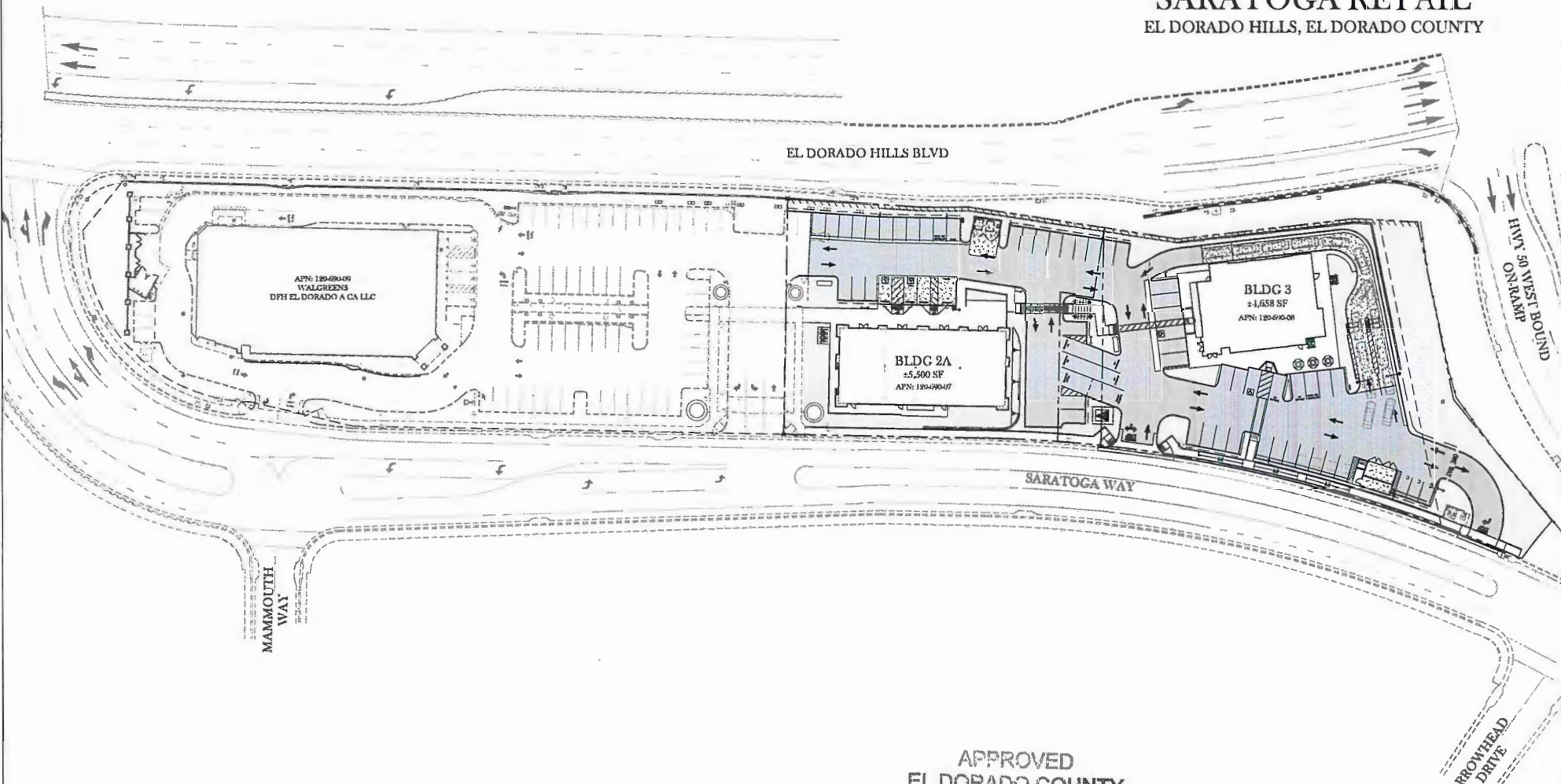
785 Orchard Dr, Suite 110  
 Folsom, CA 95630  
 Phone: (916) 608-0707  
 Fax: (916) 608-0701

P:\Projects\139-090-07\_Prelim\139-090-07\_Prelim\139-090-07\_Prelim.dwg - Color Plot - 11/26/18 11:30:00 AM

OVERALL - PRELIMINARY SITE PLAN - DESIGN REVIEW

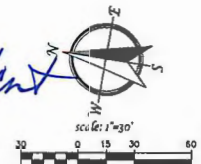
# SARATOGA RETAIL

EL DORADO HILLS, EL DORADO COUNTY



APPROVED  
 EL DORADO COUNTY  
 PLANNING COMMISSION  
 Board of Supervisors  
 DATE October 9, 2018  
 BY Tiffany Schmid  
 EXECUTIVE SECRETARY

PRELIMINARY SITE PLAN  
 JUNE 26, 2018

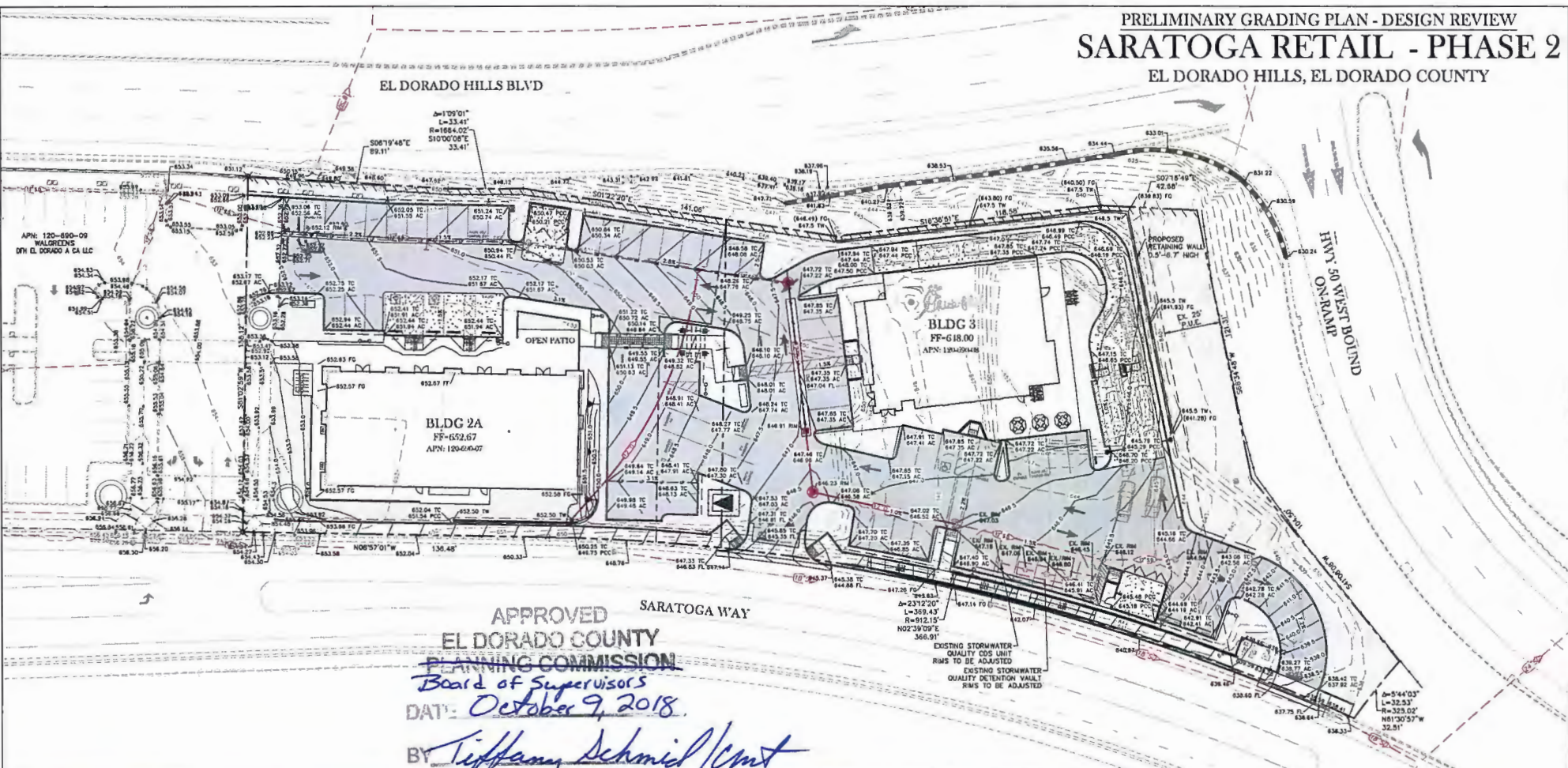


**TSD ENGINEERING, INC.**  
 expect more.  
 785 Orchard Dr, Suite 110  
 Folsom, CA 95630  
 Phone: (916) 608-0707  
 Fax: (916) 608-0701

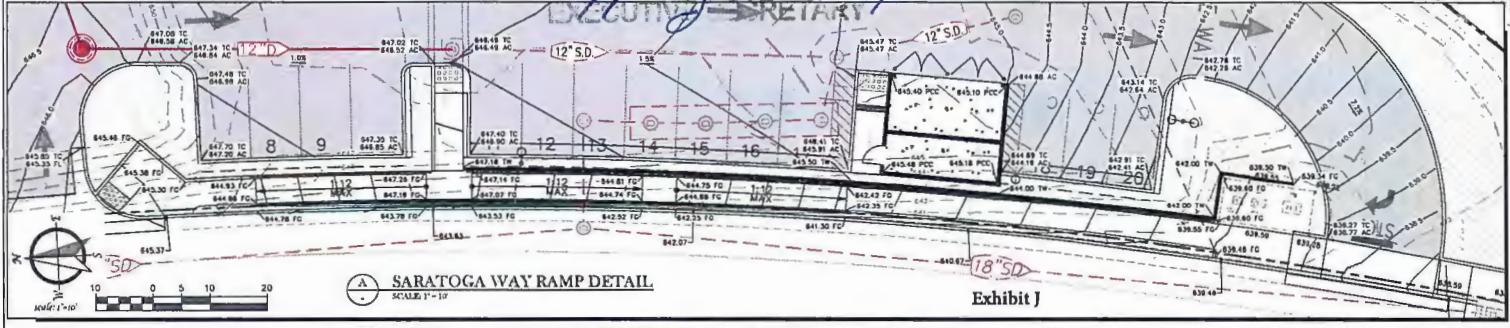
Exhibit I

P:\Projects\120-090-08\120-090-08\_Prelim\_Site\_Plan.dwg, Plot Date: 11/26/18, 11:26:18 AM

PRELIMINARY GRADING PLAN - DESIGN REVIEW  
**SARATOGA RETAIL - PHASE 2**  
 EL DORADO HILLS, EL DORADO COUNTY



APPROVED  
 EL DORADO COUNTY  
 PLANNING COMMISSION  
 Board of Supervisors  
 DATE: *October 9, 2018.*  
 BY: *Tiffany Schmid/Cmt*  
 EXECUTIVE SECRETARY



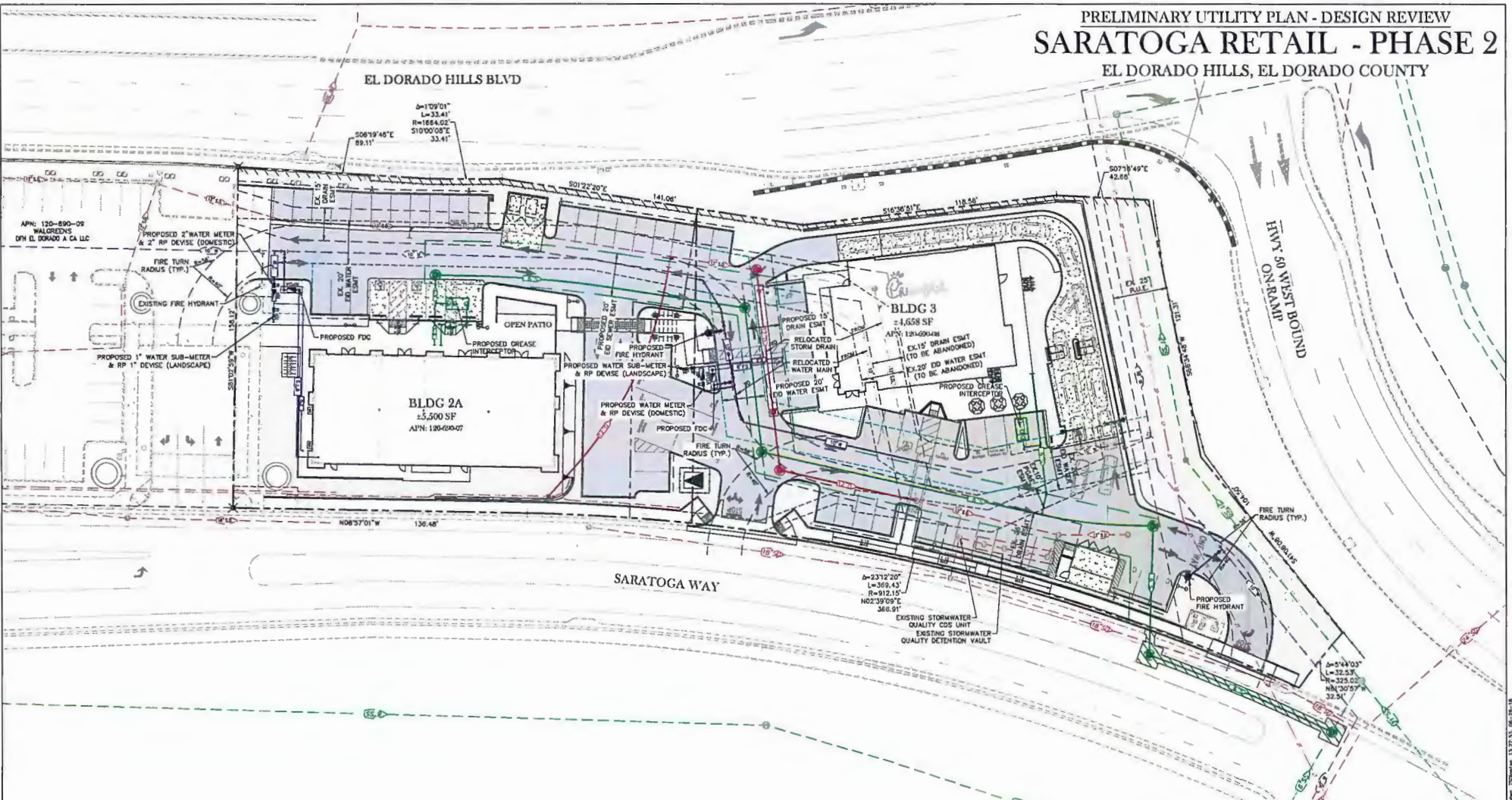
PRELIMINARY GRADING PLAN  
 MAY 07, 2018  
 REVISED JUNE 26, 2018

**TSD ENGINEERING, INC.**  
 expect more.  
 785 Orchard Dr, Suite 110  
 Folsom, CA 95630  
 Phone: (916) 608-0707  
 Fax: (916) 608-0701

P:\Projects\13121-03\13121-03.dwg - Preliminary Grading Plan.dwg, 13:27:10, 08-18

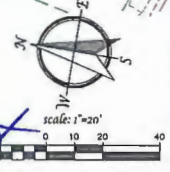
PRELIMINARY UTILITY PLAN - DESIGN REVIEW  
**SARATOGA RETAIL - PHASE 2**

EL DORADO HILLS, EL DORADO COUNTY



APPROVED  
 EL DORADO COUNTY  
 PLANNING COMMISSION  
 Board of Supervisors  
 DATE: *October 9, 2018*

BY: *Tiffany Schmid*  
 PROJECT MANAGER



PRELIMINARY UTILITY PLAN  
 MAY 07, 2018  
 REVISED JUNE 26, 2018

**TSD ENGINEERING, INC.**  
 expect more.  
 785 Orchard Dr, Suite 110  
 Folsom, CA 95630  
 Phone: (916) 608-0707  
 Fax: (916) 608-0701

Exhibit K

P:\Projects\1311-00132 - El Dorado Hills - Preliminary Utility Plan.dwg, 13.07.18, 06:19:18

EL DORADO HILLS BOULEVARD

SARATOGA WAY

CONCEPT PLANT SCHEDULE

	<b>SHADE TREE 1</b> Platanus occidentalis 'Formosa' / London Plane Tree	24" box
	<b>SHADE TREE 2</b> Quercus lobata / Valley Oak	18 gal
	<b>SHADE TREE 3</b> Platanus racemosa / California Sycamore Multi-Trunk	24" box
	<b>MEDIUM SHADE TREE</b> Cercis canadensis / Eastern Redbud	18 gal
	<b>ACCENT TREE 1</b> Lagerstroemia x 'Natchez' / White Crape Myrtle	24" box
	<b>ACCENT TREE 2</b> Arbutus x 'Norte' / Arbutus Multi-Trunk	24" box
	<b>ACCENT SHRUB</b> Cupressus sempervirens 'Tiny Tower' TM / Tiny Tower Italian Cypress	18 gal
	<b>POTENTIAL SHRUBS</b>	
	Abutilon striatum 'Hybrid Blaster' / Giant Doll Abutilon	48" 5 gal 80" oc
	Buddleja davidii 'Harlequin' / Fuchsia Plum Duet	48" 1 gal 40" oc
	Banksia microphylla 'Japanese Green Beauty' / Green Beauty Boxwood	48" 5 gal 56" oc
	Camellia japonica 'Kramer's Supreme' TM / Kramer's Supreme Camellia	48" 15 gal 72" oc
	Celastrus scandens 'Wreath' / Sageseal Redrose	48" 1 gal 40" oc
	Cyrtus minata / Kaffir Lily	48" 1 gal 40" oc
	Dianthus vegetus / African Lily	48" 5 gal 56" oc
	Eunymia fortunei 'Emerald Galaxy' TM / Emerald Galaxy Eunymia	48" 5 gal 80" oc
	Jurpinia chinensis 'Robusta Green' / Robust Green Juniper	48" 5 gal 80" oc
	Lawsonia inermis / Sweet Oleander	48" 24" box 72" oc
	Liriodendron tulipifera 'Sultry Surprise' / Sultry Surprise Blue Lily	48" 1 gal 40" oc
	Madagascar periwinkle / Yellow Trumpet Vine	48" 5 gal 48" oc
	Mahonia aquifolium 'Soft Green' / Mahonia Soft Green	48" 5 gal 48" oc
	Myrica communis 'Microphylla' / Myrtle	48" 5 gal 48" oc
	Nandina domestica 'Lemon Lime' / Lemon Lime Nandina	48" 5 gal 48" oc
	Osteospermum frutescens 'Pompeii Purple' / African Daisy	48" 1 gal 56" oc
	Pentstemon tripartitus / Boston Ivy	48" 5 gal 56" oc
	Rosa banksia 'Aldo Piana' / Lady Banks' Rose	48" 5 gal 120" oc
	Rosa horridula 'Iceberg' / Iceberg Rose	48" 5 gal 48" oc
	Rosa polyantha 'Cascadia Bruner' / Cascade Bruner Rose	48" 5 gal 56" oc
	Rosmarinus officinalis 'Goldingwood Ingram' / Rosemary	48" 5 gal 48" oc
	Rosmarinus officinalis 'Variegata' TM / Variegated Rosemary	48" 5 gal 56" oc
	Selvia greggii 'Purman Red' / Purman's Red Salvia	48" 1 gal 56" oc
	Vincetoxicum / Foxglove	48" 1 gal 24" oc
	<b>ACCENT PLANTING AT ENTRY</b>	
	Adiantum x 'Horseshoe' / Horseshoe Fern	16" 1 gal 24" oc
	Erigeron karwinskianus 'Moonlight' / Pink Double Barbara Daisy	16" 1 gal 24" oc
	Kaliphofa varia 'Bass Blues' / Red Hot Poker	16" 1 gal 24" oc
	Kaliphofa varia 'Pyramidal Beauty' / Pink Plant	16" 1 gal 24" oc
	Rosa x 'Flower Carpet White' / Rose	16" 1 gal 24" oc
	Taxodium canadense / Sweetgum	16" 1 gal 24" oc



PRELIMINARY PLANTING PLAN - DESIGN REVIEW

**SARATOGA RETAIL - PHASE 2**  
EL DORADO HILLS, EL DORADO COUNTY  
JUNE 20, 2018

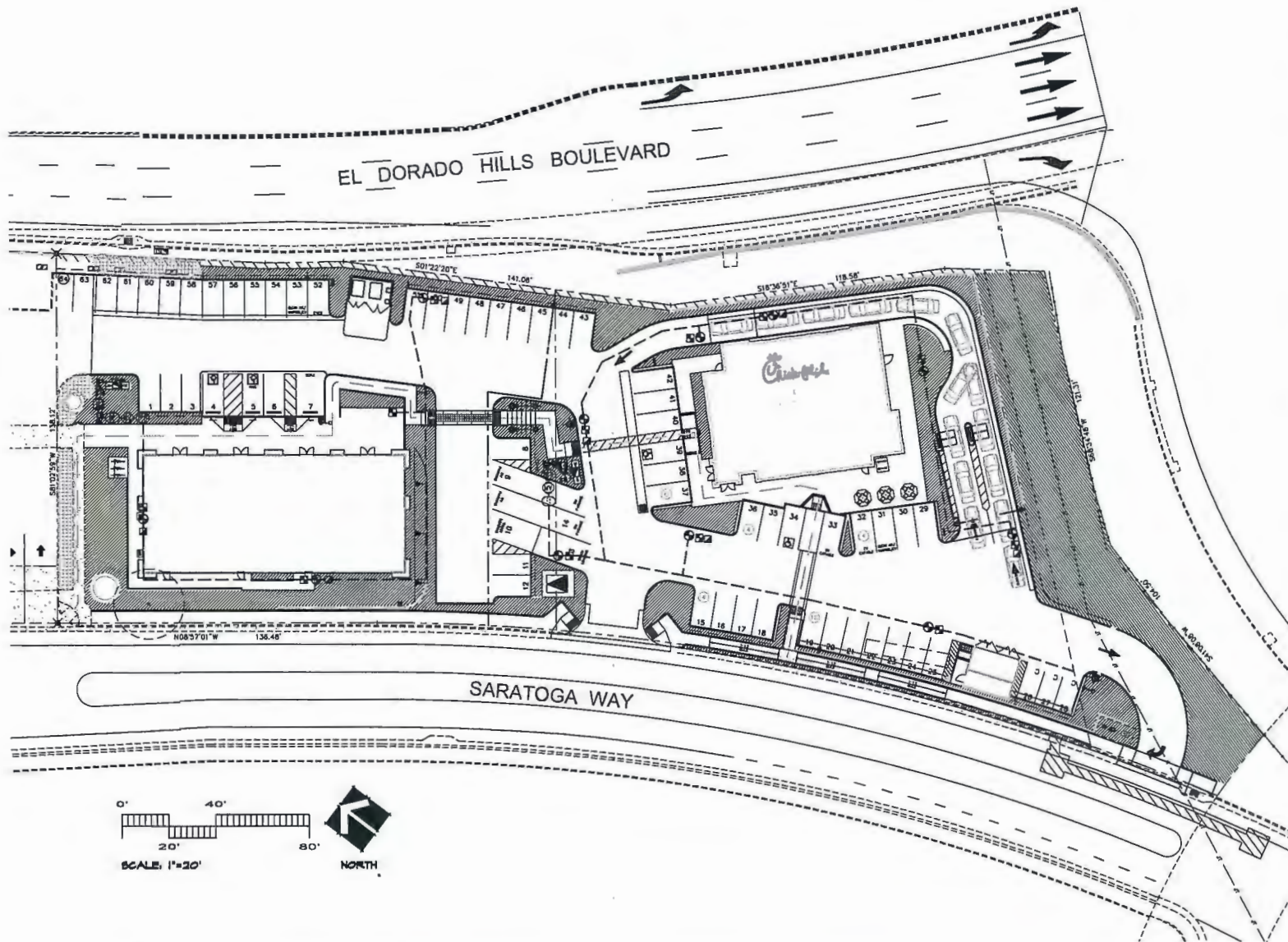
Exhibit L

APPROVED

EL DORADO COUNTY  
PLANNING COMMISSION  
Board of Supervisors  
October 9, 2018.

BY: *Tiffany Schmid/Cmt*  
EXECUTIVE SECRETARY

YAMASAKI  
LANDSCAPE ARCHITECTURE  
1222 HIGH STREET, ALBUQUERQUE, NM 87102  
TEL: 505.833.0010 FAX: 505.833.0012



**IRRIGATION SCHEDULE**

SYMBOL	MANUFACTURER/MODEL/DESCRIPTION	PSI
⊗ ⊗ ⊗ ⊗	Hunter PCB Flood Bubble, 1/2" FIPT.	20
⊗	Hunter PGZ-101-25 Drip Control Valve Kit, 1" P&V globe valve with 1" HY100 filter system, Pressure Regulation: 25psi. Flow range: 0.5 GPM to 15 GPM. 150 mesh stainless steel screen.	
⊗	Netafim TL000MFV-1 Automatic Flush valve, 1/2" male pipe thread.	
⊗	Rain Bird OPERIND Drip System Operation Indicator, stem rises 6" for clear visibility when drip system is changed to a minimum of 30psi. Includes 16' of 1/4" distribution tubing with connection fitting pre-installed.	
▨	Area to Receive Dripline Hunter PLD-06-10 (10) In-Line Pressure Compensating Landscape Dripline with Built-in Check Valve, 0.65GPH emitters at 10.0' O.C. Dripline laterals spaced at 10.0' apart, with emitters offset for triangular pattern. UV Resistant.	
⊗	Hunter IGV-5 1", 1-1/2", 2", and 3" Plastic Electric Remote Control Valves, Globe Configuration, with NPT Threaded Inlet/Outlet, for Commercial/Municipal Use.	
⊗	Hunter HQ-44LRC Quick coupler valve, yellow rubber locking cover, red brass and stainless steel, with 1" NPT inlet, 2-piece body.	
⊗	Nibco T-113 Close 125 bronze gate shut off valve with wheel handle, same size as mainline pipe diameter at valve location. Size Range - 1/4" - 3"	
⊗	Hunter IGV-5 1", 1-1/2", 2", and 3" Plastic Electric Master Valve, Globe Configuration, with NPT Threaded Inlet/Outlet, for Commercial/Municipal Use.	
⊗	Felco 825Y Reduced Pressure Backflow Preventer	
⊗	Hunter IC-1200-M Modular Controller, 12 stations, Outdoor Model, Metal Cabinet, Commercial Use. With one ICM-600 module included.	
⊗	Creative Sensor Technology F51-T10-001 1" (25mm) PVC tee type flow sensor w/socket and custom mounting tee and ultra-lightweight impeller enhances low flow measurement. 2 wire digital output compatible w/all irrigation controllers. Flow range: .06-52 GPM.	
⊗	Water Meter 1" See Civil plans.	
⊗	Water Meter 1" See Civil Plans	
—	Irrigation Lateral Line: PVC Schedule 40	
---	Irrigation Mainline: CPVC Schedule 40	
----	Pipe Sleeve: PVC Schedule 40	
⊗	Valve Outlet	
⊗	Valve Number	
⊗	Valve Pipe	
⊗	Valve Box	

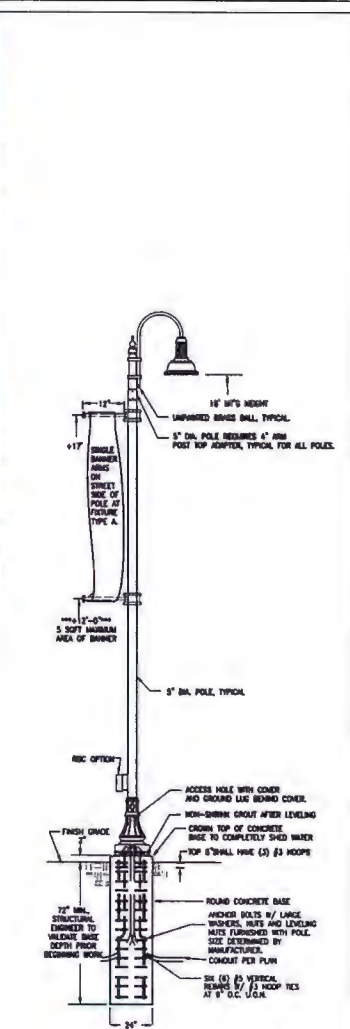
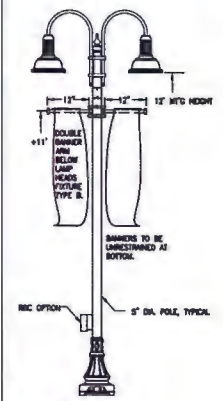
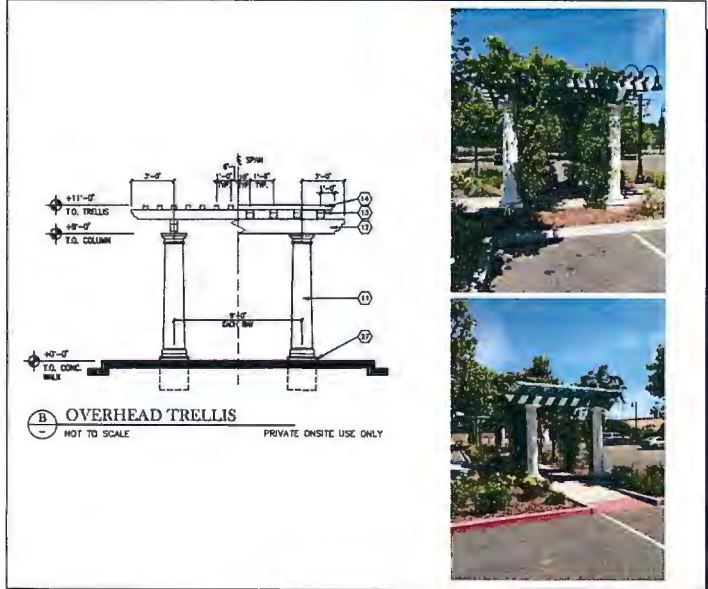
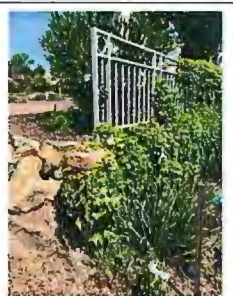
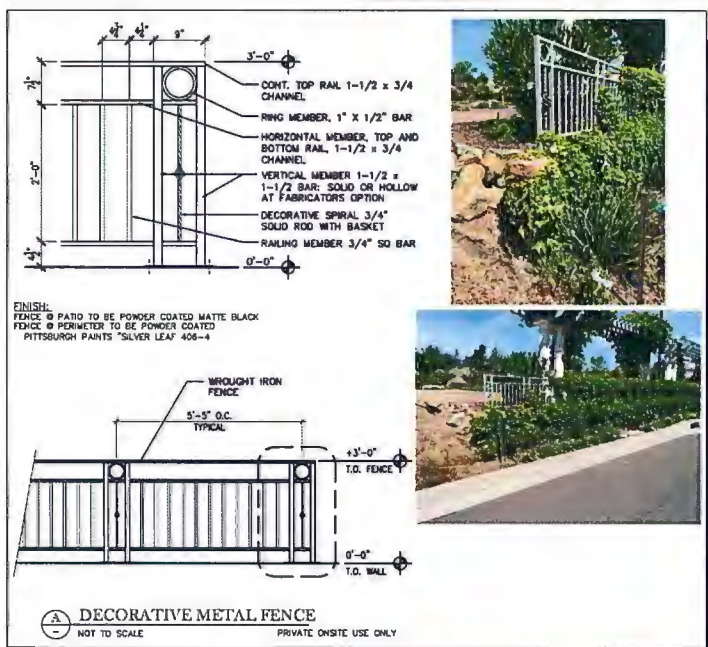
PRELIMINARY IRRIGATION PLAN - DESIGN REVIEW

**SARATOGA RETAIL - PHASE 2**  
EL DORADO HILLS, EL DORADO COUNTY  
JUNE 20, 2018

Exhibit M

APPROVED  
EL DORADO COUNTY  
PLANNING COMMISSION  
Board of Supervisors  
DATE: October 9, 2018  
BY: Tiffany Schmid/Chf  
EXECUTIVE SECRETARY

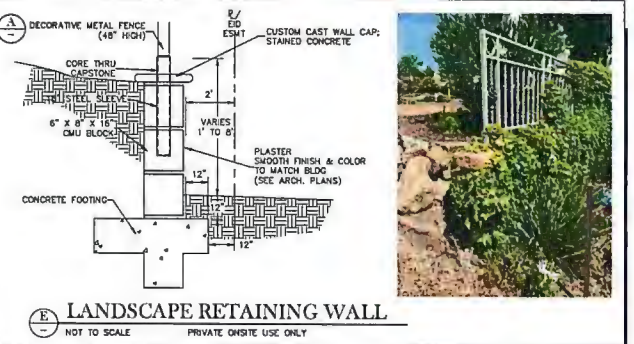
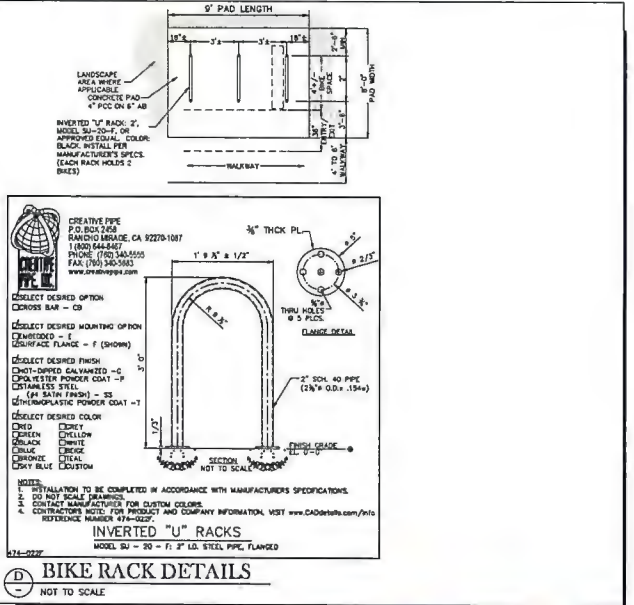




**LIGHTING DETAILS**  
 SCALE: NONE  
**ALL POLES SHALL WITHSTAND 85 MPH WINDS AND 13 GUST FACTOR.**  
 NOTES: 1. CONCRETE TO FIELD INSTALL W/1/2" RECEPTACLES AT ALL LOCATIONS AS SHOWN ON PLAN. REC OPTION. 2. HANGER ARMS ARE ADJUSTABLE, BUT SHALL NOT EXCEED HANGING AREA AS SHOWN ABOVE.

**SITE LIGHTING**  
 NOT TO SCALE PRIVATE ONSITE USE ONLY

PRELIMINARY SITE DETAILS - DESIGN REVIEW  
**SARATOGA RETAIL - PHASE 2**  
 EL DORADO HILLS, EL DORADO COUNTY



APPROVED  
**EL DORADO COUNTY**  
**PLANNING COMMISSION**  
 Board of Supervisors  
 October 9, 2018

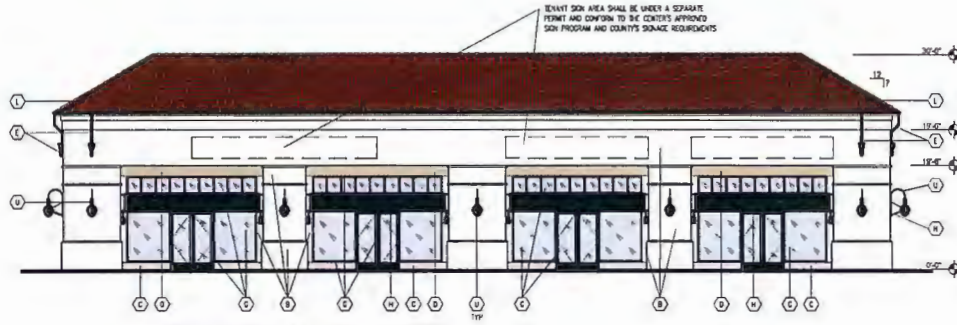
**TSD ENGINEERING, INC.**  
 expect more.  
 785 Orchard Dr, Suite 110  
 Folsom, CA 95630  
 Phone: (916) 608-0707  
 Fax: (916) 608-0701

BY *Tiffany Schmid/Cmt*  
 EXECUTIVE SECRETARY

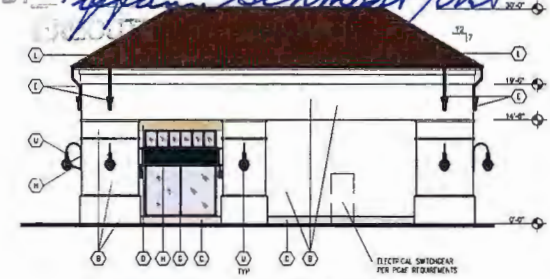


APPROVED  
 EL DORADO COUNTY  
 PLANNING COMMISSION  
 Board of Supervisors  
 October 9, 2018

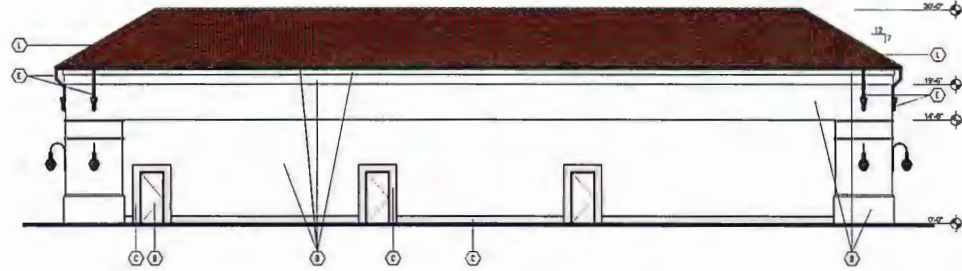
BY *Tiffany Schmidt/Env*



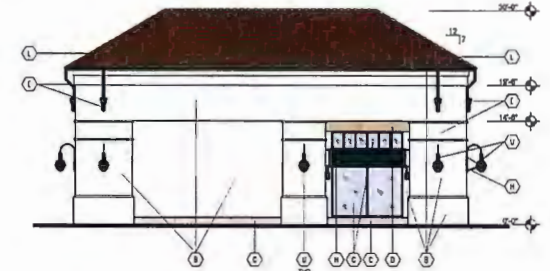
BUILDING 2 - EAST ELEVATION



BUILDING 2 - NORTH ELEVATION



BUILDING 2 - WEST ELEVATION



BUILDING 2 - SOUTH ELEVATION

MATERIAL	MANUFACTURER	STYLE / COLOR							
A	METAL FLASH/ENCLOSING	UNCLAD	BONE WHITE	J	- NOT USED -				
B	CEMENT PLASTER WALL/CORNER/ HANDSCUT PAN LEAD GLASS DOOR AND FRAME	PITTSBURGH PAINTS	ENOURING KCF 415-1	K	- NOT USED -				
C	CEMENT PLASTER TRIM	PITTSBURGH PAINTS	WHEAT SHEAF 415-3	L	ROOF TILE	REDLAND CLAY TILE	JUMPER RD 6020 SERIES	RE-AD - PRIMO HS (BLACK)	W - NOT USED -
D	CEMENT PLASTER TRIM	PITTSBURGH PAINTS	POKY TAIL 315-4	M	- NOT USED -	RECAL 40511	8L7N	POLE - DR 10 SR (BLACK)	X
E	PATIO FENCE/RAIN GUTTER	PITTSBURGH PAINTS	WHTI BLACK	N	- NOT USED -	CAPE ANTELOPE 40543	23.7N	ARM - TR48 (BLACK)	NOY
F	METAL FENCE AT SITE	PITTSBURGH PAINTS	SILVER LEAF 405-4	O	- NOT USED -			DUAL HEADS - PRIMO HS (BLACK)	SOBBE3 (BLACK)
G	STOREFRONT	F.A.D.	WHTI BLACK	P	- NOT USED -			POLE - CR 48 SR (BLACK)	
H	JOINING	FABRIC: SORBELLA FRAME: ALUMINUM	WHTI BLACK					DOUBLE ARMS - TR4842 (BLACK)	
								SINGLE HEAD - PRIMO HS (BLACK)	
								BRACKET - YW44 11 (BLACK)	

**CSHOA**  
 JUNE 13, 2018  
 #15255.2

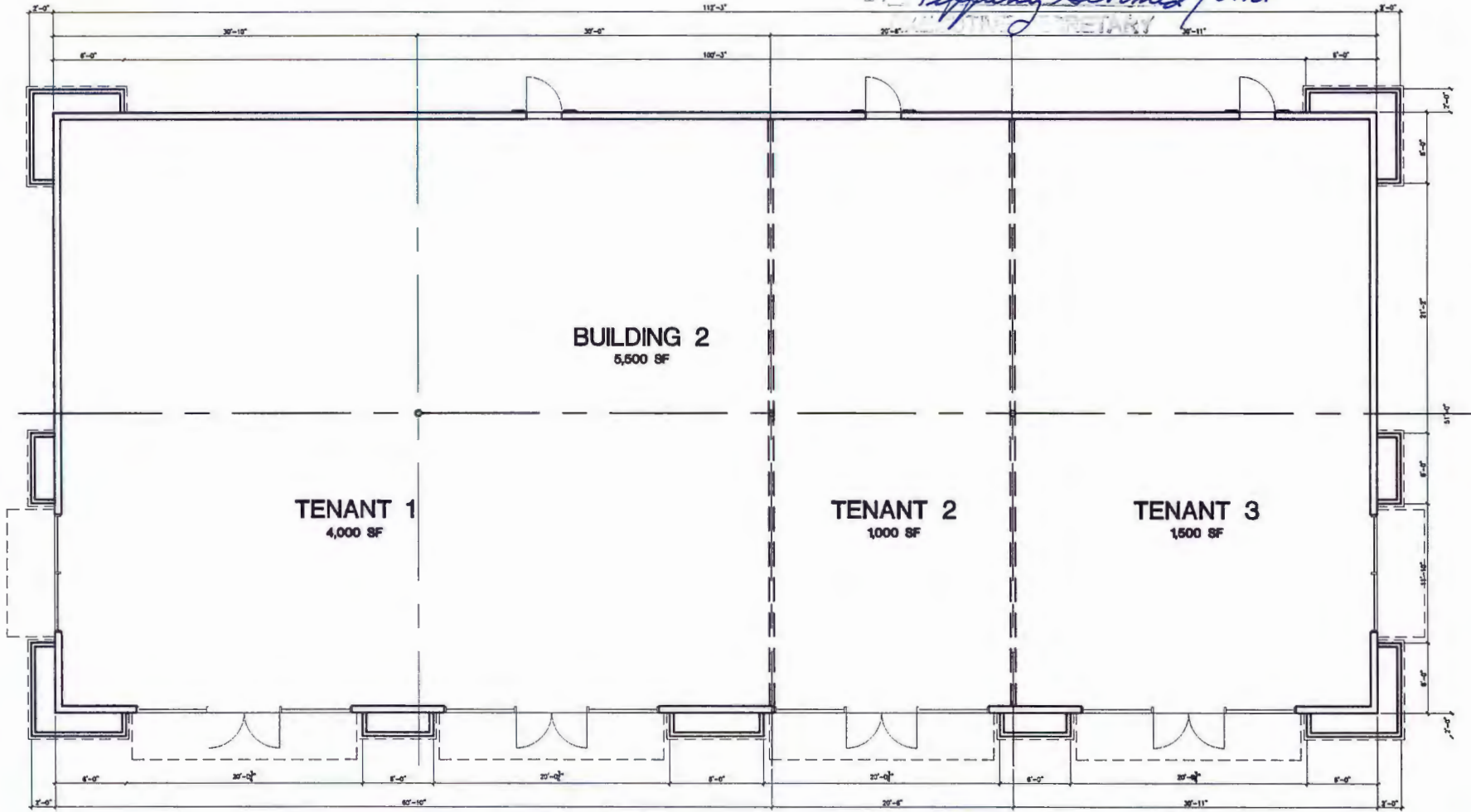
**SARATOGA RETAIL**  
 EL DORADO HILLS BLVD @ SARATOGA WAY  
 EL DORADO HILLS, CA

PRELIMINARY EXTERIOR ELEVATIONS  
 1/8" = 1'-0"

**A5**

APPROVED  
EL DORADO COUNTY  
~~PLANNING COMMISSION~~  
Board of Supervisors  
October 9, 2018

BY *Tiffany Schmid/Cmt*  
SECRETARY



**CSHQ**

JUNE 13, 2018  
#18286.2

**SARATOGA RETAIL**

EL DORADO HILLS BLVD @ SARATOGA WAY  
EL DORADO HILLS, CA

**PRELIMINARY FLOOR PLAN**

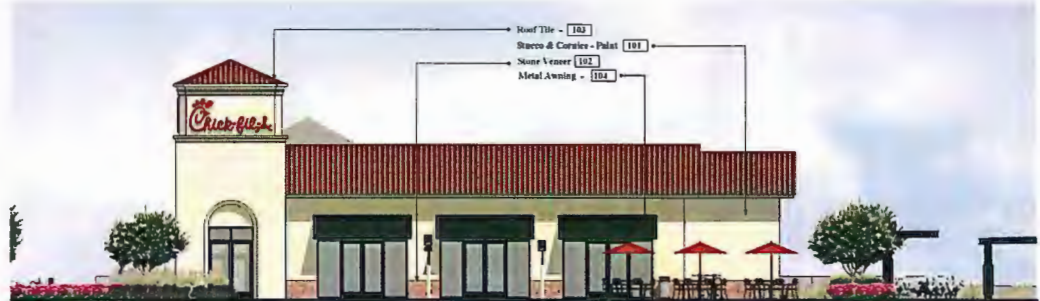
1/4" = 1'-0"



**A4**



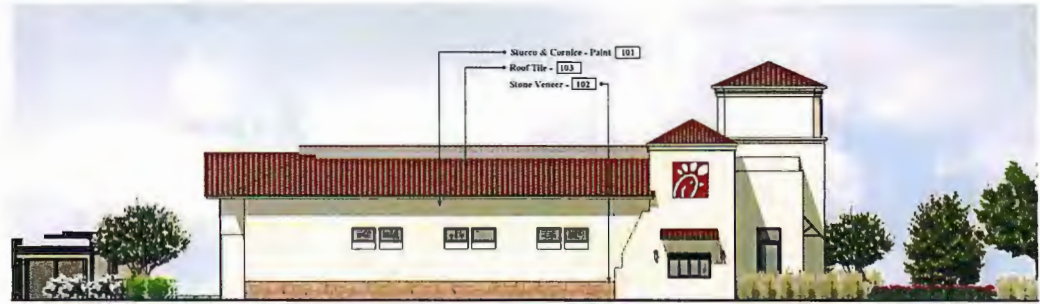
**SOUTH ELEVATION**



**WEST ELEVATION**



**NORTH ELEVATION**



**EAST ELEVATION**



**PRELIMINARY ELEVATIONS**  
El Dorado Hills, CA

8-12-16  
Updated: 11-1-16  
11-22-16  
11-29-16  
12-02-16  
06-22-17  
07/12/17

File Name: 15-217 Elevation

EL DORADO COUNTY  
PLANNING COMMISSION  
Board of Supervisors  
October 9, 2018  
BY *Tiffany Schmid*  
EXECUTIVE SECRETARY

**Note:**  
All roof top mechanical equipment shall be located in equipment well and screened from view by parapet walls.

**COLOR AND MATERIAL LEGEND**

- 101 Paint - Sherwin Williams - #SW7541 "Ocean Gray"
- 102 Stone Veneer - El Dorado Stone - Roughcut "Wheatfield"
- 103 Roof Tile - Kendall Clay Tile - Juniper 9000 Series "Rioja Handmade #95111"
- 104 Metal Awning - "Black"



**C · R · H · O**  
Architecture Interiors Planning  
195 South "C" Street Suite 200  
Tustin, California 92780  
714 832 1634  
FAX 714 832 1010

Exhibit Q



**NORTHWEST ELEVATION**



**PRELIMINARY RENDERINGS**  
**El Dorado Hills, CA**

File Name: 15-217 Elevations

8-12-16  
 Updated: 11-1-16  
 11-22-16  
 11-29-16  
 12-02-16  
 06-22-17  
 07/12/17

Exhibit R

**C · R · H · O**  
 Architecture Interiors Planning  
 150 South "C" Street Suite 200  
 Tustin, California 92780  
 714 832 1634  
 FAX 714 832 1810

APPROVED  
 EL DORADO COUNTY  
 PLANNING COMMISSION  
 Board of Supervisors  
 October 9, 2018.  
 BY: *Tiffany Schmid/ent*  
 EXECUTIVE DIRECTOR



SOUTHWEST ELEVATION



PRELIMINARY RENDERINGS  
El Dorado Hills, CA

File Name: 15-227 Elevations

8-12-16  
Updated: 11-1-16  
11-22-16  
11-29-16  
12-02-16  
06-22-17  
07/12/17

Exhibit S

C · R · H · O

Architecture Interiors Planning  
195 South "C" Street Suite 200  
Tustin, California 92780  
714 832 1834  
FAX 714 832 1910

APPROVED  
EL DORADO COUNTY  
PLANNING COMMISSION  
Board of Supervisors  
October 9, 2018

BY *Tiffany Schmid/Cmt*  
EXECUTIVE SECRETARY



PATIO AREA



PRELIMINARY RENDERINGS  
El Dorado Hills, CA

File Name: 15-227 Elevations

8-12-16  
Updated: 11-1-16  
11-23-16  
11-29-16  
12-02-16  
06-22-17  
07/12/17

Exhibit T

C · R · H · O

Architecture Interiors Planning  
195 South "C" Street Suite 200  
Tustin, California 92780  
714 832 1834  
FAX 714 832 1980

EL DORADO COUNTY  
PLANNING COMMISSION  
Board of Supervisors  
DATE: October 9, 2018

BY: Tiffany Schmidt / Cmst  
EXECUTIVE SECRETARY