

Health & Human Services Agency Briefing

Presented to the Board of Supervisors
February 2, 2021

HHSA Divisions

- ❖ Protective Services
- ❖ Self Sufficiency
- ❖ Community Services
- ❖ Behavioral Health
- ❖ Public Health
- ❖ Administration & Fiscal

Protective Services Division

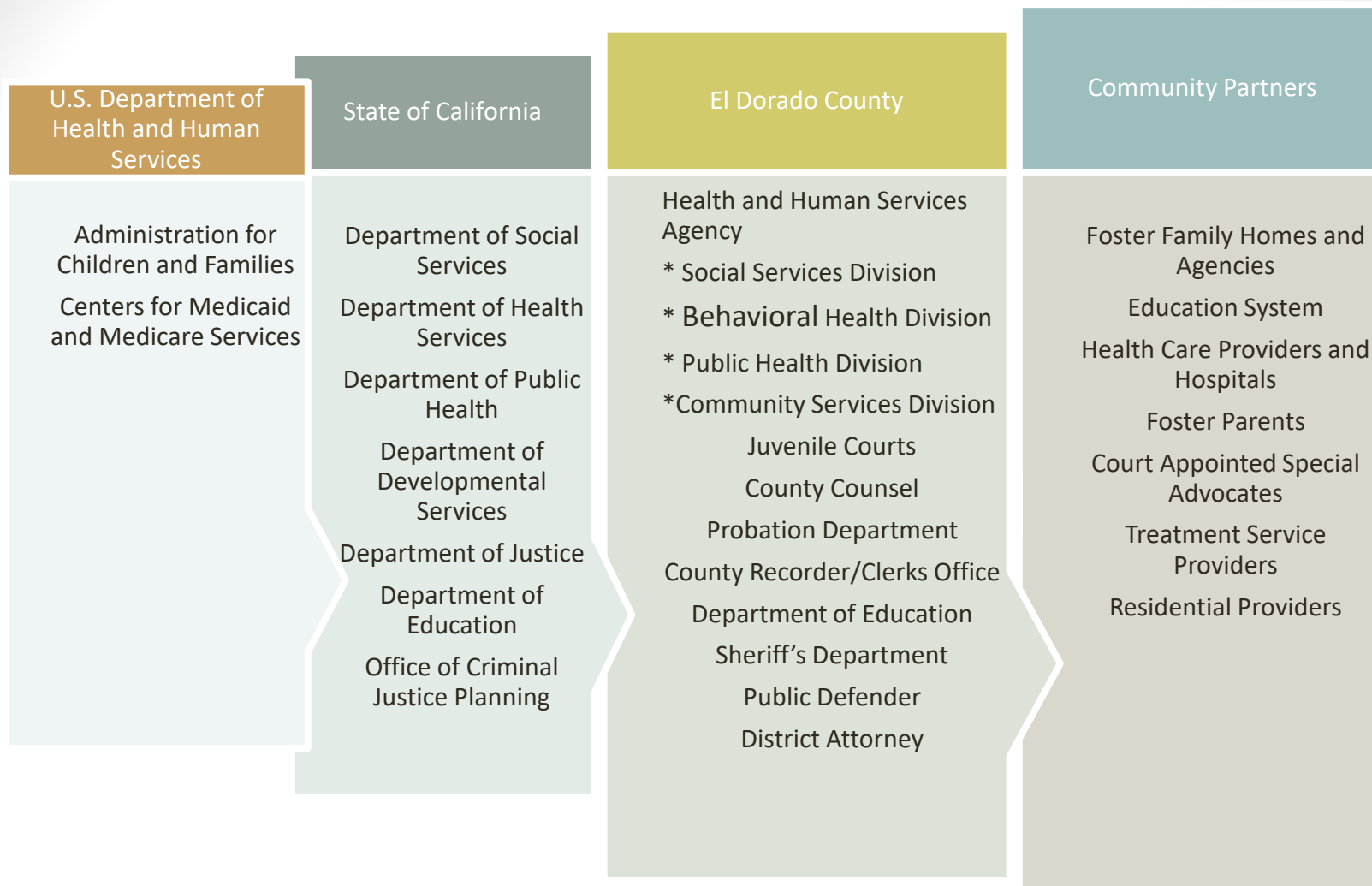
Leslie Griffith – Assistant Director

- ❖ Adult Protective Services
- ❖ Child Welfare Services
- ❖ Elder and Dependent Adult Protective Services
- ❖ In Home Support Services (IHSS)
- ❖ IHSS Public Authority

Child Welfare Services

“Child welfare is a continuum of services designed to ensure children are safe and that families have the necessary support to care for their children successfully.”

- ❖ Federal and state laws establish the legal, regulatory, and fiscal frameworks for the child welfare system.
- ❖ Involves collaboration of multiple county departments, juvenile courts, community and family resource partners.



Child Welfare System

Who do we serve?

CWS serves children (ages 0-21) who are at risk of abuse and neglect, and their families through:

1. Prevention
2. Emergency/community response
3. Foster Care
4. After Care

	2019	2020
Calls received by intake unit	2342	1923
Calls investigated by Emergency Response	1109	916
Children and youths in out of home care	281	236
Total children/youths in care	362	394

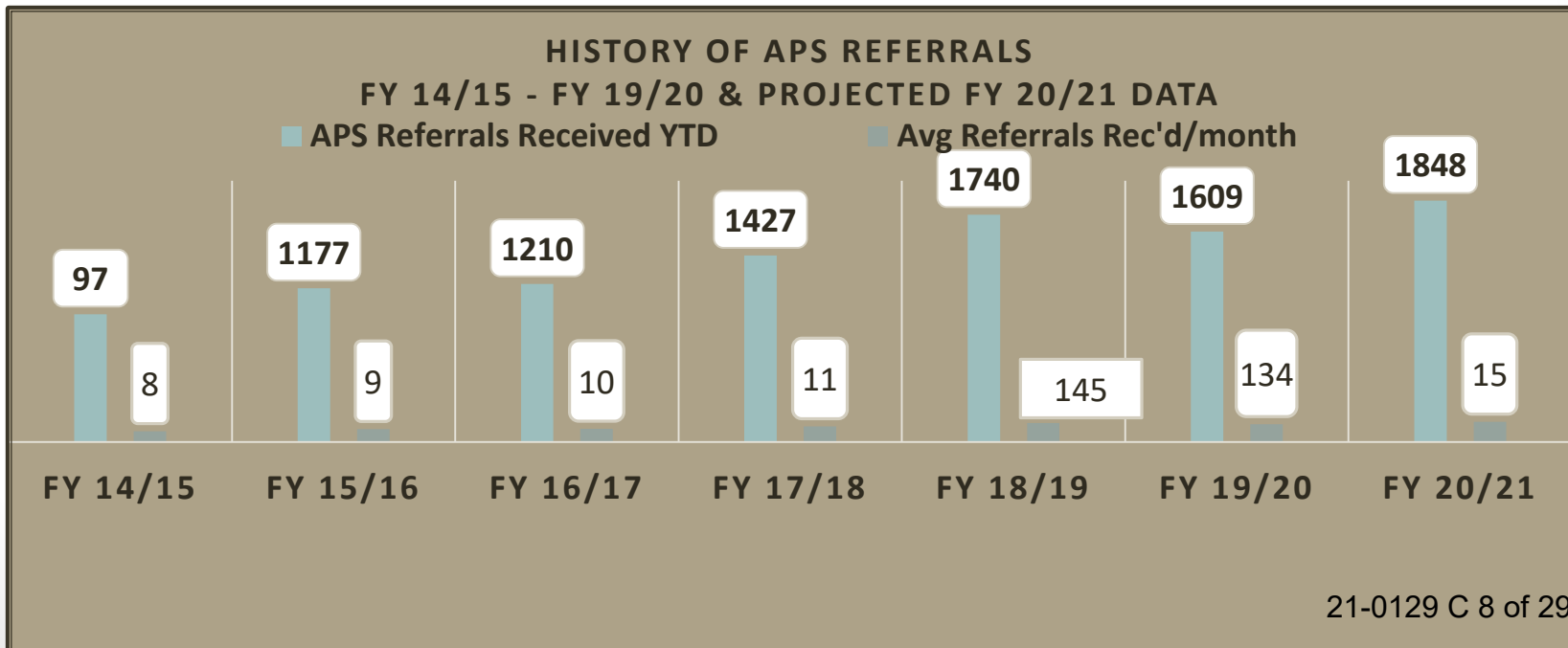


Adult Protective Services

- ❖ State-mandated program which investigates reports of individuals endangered by abuse, neglect or exploitation.
- ❖ Provides a critical safety net for vulnerable adults and helps many remain safely at home and in their communities.
- ❖ Serves older (65 years +) and dependent adults (18 – 64 years old who are physically or mentally impaired) living in private homes, apartments, hotels or hospitals.
- ❖ Services:
 - Are Voluntary, not punitive (individual may refuse or withdraw consent to services at any time to the preventative and remedial services offered by APS).
 - Offer resources, services & supports to help individuals remain living in their own homes and communities.
 - Include investigation, case management, access and linkage to resources, emergency services, counseling.

El Dorado County APS

- ❖ Since January 2006, EDC APS has received over 16,508 reports.
- ❖ > 78% increase through FY 18/19; slight drop in early COVID months, referrals returned to pre-COVID and higher levels in July 2020.
- ❖ FY20/21 projections show increase of 14% between FY 19/20 and FY 20/21.
- ❖ NOTE: Projections do not take into acct Public Health projections re: older and dependent adults in the County, but it should be noted that the “baby boomer effect” will be seen for the next 30 years.



Elder and Dependent Adult Abuse Project (EDAAP)

- ❖ Federal Victims of Crime Act (VOCA) grant California Office of Emergency Services (Cal OES).
- ❖ Enhances collaboration of APS, Senior Legal Services and the District Attorney's Victim Witness Services.
- ❖ Bridge the gap between elder justice service providers and victim service providers.
- ❖ Enhance the safety of elder and dependent adult victims of crime by providing direct services to victims.

In-Home Supportive Services Program (IHSS)

- ❖ In-Home Supportive Services (IHSS) is a Statewide program administered by the California Department of Social Services (CDSS).
- ❖ IHSS is an alternative to out of home care providing domestic and personal care services to eligible IHSS recipients who are aged, blind or disabled and who live in their own homes.
- ❖ IHSS is provided to those who otherwise might be placed in an out-of-home care facility, but who can safely remain in their own home if IHSS services are received.

IHSS Recipient Data

- ❖ The IHSS caseload continues to grow in size each year, with a >30% increase in EDC since FY 16/17, averaging 6.89% increase annually.
- ❖ Of the current 1474 recipients:
 - 16.7% are 0 - 17 years old
 - 25% are 18 – 44 years old
 - 23.7% are 45 – 64 years old
 - 34.6% are 65 years and older

IHSS Caseload	FY 16/17	FY 17/18	FY 18/19	FY 19/20	FY 20/21 (YTD)
Average County Authorized Caseload	1129	1204	1289	1385	1474
Average Authorized Hours/Case	136	139.7	146.1	148.5	147.3
Severely Impaired Cases (> 20 hrs./wk. nonmedical personal services, meal prep or cleanup/paramedical)	370	426	461	501	541
Protective Supervision Cases	285	317	362	398	405
Paramedical Hours/Case	45	43.2	43.4	44.5	44.4
Effective 12.15.2020 as per CDSS					

In-Home Supportive Services Public Authority (IHSS PA)

- ❖ The mission of the IHSS Public Authority is to improve the lives of IHSS recipients by ensuring access to skilled providers who can help them sustain independent living, to provide training and support for a positive working relationship and to improve the delivery of the IHSS program.
- ❖ IHSS PA Provider Snapshot:
 - EDC currently has 1542 care providers
 - 1437 individual providers
 - 114 are Registry Provider
- ❖ Overall, EDC providers include:
 - 58% of providers are live in providers
 - Of these 58%, 51% are family providers
 - 64% relative providers
 - 5% spouse providers
 - 35% parent providers

Self Sufficiency Division

Patty Moley – Assistant Director

❖ CalFresh

- This program has seen a 22% increase

❖ CalWORKs

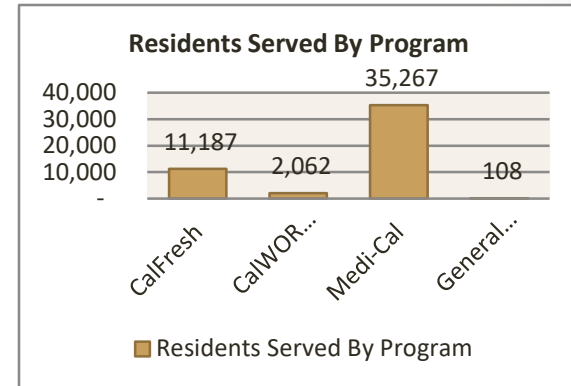
- Cash Aid and Family Stabilization
- Provides temporary and permanent housing assistance

❖ Employment Services

- Provides supportive services to participating CalWORKs
- Provides subsidized employment training opportunities

❖ Medi-Cal

- No-cost or low-cost health and dental coverage



Self Sufficiency Division

❖ General Assistance (GA)/County Medical Services Program (CMSP)

- GA is a loan program designed to relieve and support poor and indigent residents.
- CMSP provides health coverage for uninsured low-income.

❖ Foster Care/Adoption Assistance

- Provides financial and medical coverage to children who require out-of-home care.
- Serving 738 children.

❖ Program Integrity

- Ensures program integrity and safeguards public assistance funds.

❖ Homelessness

- 14 grants and funding sources totaling \$9,468,887 for homelessness programs.

Community Services Division

❖ Animal Services

- Mandated Service.
- Animal Services responds to over 8,000 complaints each year.

❖ Senior Services

- Area Agency on Aging Services.
- Ten specific programs to support 65 and older.

❖ Community Action Agency (CAA)

- The goal of the CAA is to reduce poverty in the community.

❖ Community Corrections Collaboration (AB109)

- CCC is a collaborative effort with our legal system partners.

Community Services Division

❖ Low Income Home Energy Assistance Program (LIHEAP)

- This Federally funded program provides assistance with utility costs and energy efficiencies.

❖ Public Housing Authority

- The Public Housing Authority (PHA) administers 374 Housing Choice Vouchers.
- Specialized Vouchers for vulnerable populations.

❖ Veteran Services

- Service Related Compensation claim assistance.
- 312 successful claims filed in 2020.

Behavioral Health

Nicole Ebrahimi-Nuyken – Behavioral Health Director

- ❖ Outpatient Treatment Services
- ❖ Intensive Care Management/Full Service Partnership
- ❖ Psychiatric Emergency Services
- ❖ Mental Health Services Act Program (MHSA)
- ❖ Psychiatric Health Facility
- ❖ Wellness Center

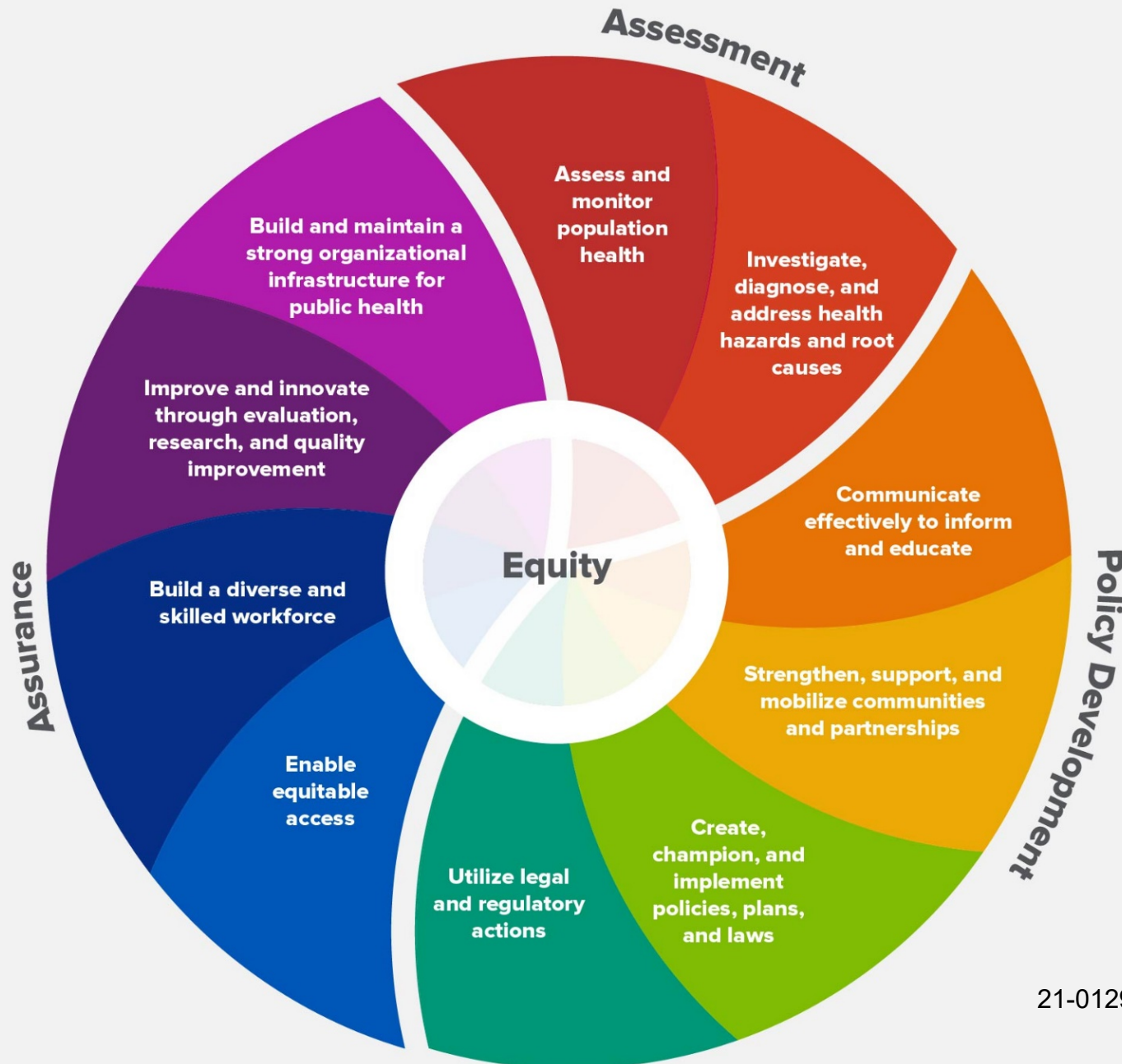
Behavioral Health

- ❖ Public Guardian
- ❖ Quality Assurance/Utilization Review
- ❖ Substance Use Disorder Services

Public Health

Olivia Byron-Cooper – Acting Public Health Director

Essential Functions of Public Health



Public Health – Assessment/Monitoring/Investigation

❖ Communicable
Disease

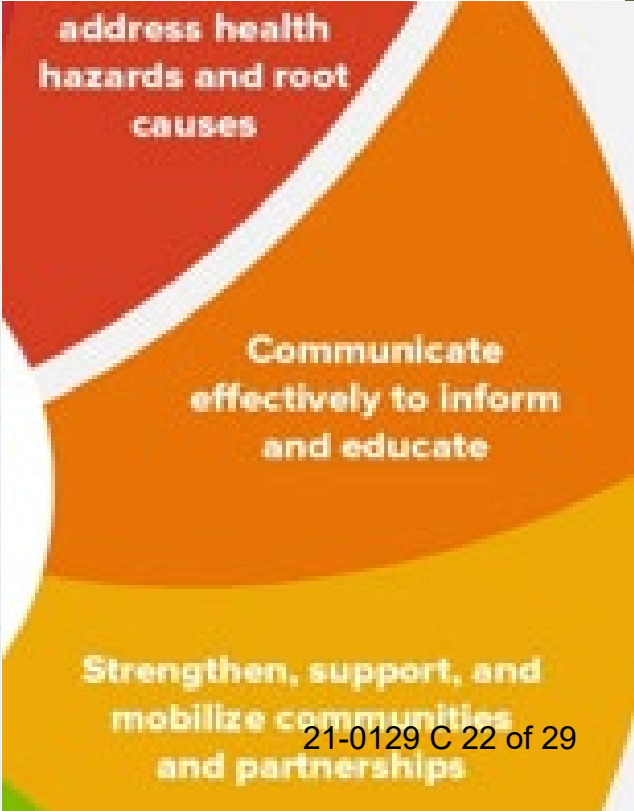
❖ Vital Statistics

❖ Epidemiology/Health
Information



Public Health – Address health hazards and root causes/Educate/Communicate/Leverage partnerships

❖ Oral Health	❖ Childhood Lead Poisoning Prevention Program
❖ SNAP-Ed	❖ Child Health & Disability Prevention Program (CHDP)
❖ Tobacco Use Prevention (TUPP)	❖ Health Care Program for Children in Foster Care
❖ Women, Infants & Children (WIC)	❖ Immunizations
❖ Community Hubs	❖ Maternal Child & Adolescent Health (MCAH)
❖ CA Children’s Services	



Administration & Fiscal

Nita Wracker – Agency Chief Fiscal Officer

Budget Overview

Division	Appropriations	General Fund	FTEs
HHS Administration	\$3,950,903	\$276,158	62
Public Health	\$30,621,662	\$4,707,847	66
Animal Services	\$3,725,042	\$2,087,060	20
Behavioral Health	\$44,274,491	\$16,510	117
Social Services	\$66,238,454	\$2,956,219	273
Community Services	\$18,257,498	\$2,556,963	59
Public Guardian	\$1,938,027	\$1,704,027	12
Veterans Affairs	\$739,841	\$637,499	6
TOTAL	\$169,745,921	\$14,942,283	615
		General Fund 8.8%	

21-0129 C 23 of 29

Fiscal Services - Support Executive

Leadership, Program Managers, Supervisors & Staff

**Budget / Fiscal
Analysis
Medi-Cal Billing**



**Program
Accounting
Accounts
Receivable
Audits /
Reporting**

**Contracts
Grants
Compliance
Board Items**

**Purchasing
Accounts
Payable
Payroll
Public Guardian
Accounting**

Fiscal Services

❖ Budget Preparation & Analysis

- Agency wide
- Specialized budgets for grants and funding agencies

❖ Fiscal Analysis

- Fiscal projections
- Indirect Cost rate

❖ Medi-Cal Billing

Fiscal Services

❖ Program Accounting

- Support and information to all Agency Programs

❖ Accounts Receivable

- Federal and State Claims – Program funding
- Collaborate with Sheriff's Office on FEMA projects

❖ Auditing / Reporting

- State and Federal Financial Audits
- Pandemic Funding claims

Fiscal Services

- ❖ Payroll for all active employee (615 FTEs)
- ❖ Accounts Payable
 - 17,700 invoices annually
- ❖ Purchasing
 - Compliance with contracts & purchasing agreements
- ❖ Accounts Receivable
 - Collect and records program funds and fees received
- ❖ Public Guardian Accounting
 - Fiscal support and accounting

Fiscal Services

❖ Contracts

- 363 active or in process agreements and contracts

❖ Grant Development

- 27 active or in process grants (estimated \$15M)

❖ Vendor Compliance

❖ Board items

Current & Upcoming Issues

- ❖ HHSA's COVID-19 Response
- ❖ Realignment Funding & Structural Budget Deficits
- ❖ Mid-Year Budget Challenges & FY 21/22 Budget
- ❖ Community HUBS Sustainability
- ❖ Assessment of Behavioral Health Services (IDEA)
- ❖ HHSA Facilities
- ❖ Housing & Homelessness
- ❖ Youth & Families Commission
- ❖ Chief Assistant Director
- ❖ HHSA Strategic Plan
- ❖ Building a Culture of Excellence