

Drawing name: C:\Civil 3D Projects\78669 White Meadows Slipout\Drawings\Sheets\Title.dwg Layout Tab: Title Aug 02, 2007 - 2:59pm ABishop

INDEX OF SHEETS

SHEET	PLAN SHEET	TITLE
1		TITLE SHEET
2	CD-1	SURVEY CONTROL DIAGRAM
3	X-1	TYPICAL SECTIONS
4	L-1	LAYOUT PLAN & PROFILE
5	D-1	DRAINAGE LAYOUT SYSTEMS 1 & 2
6	D-2	DRAINAGE PROFILE SYSTEMS 1 & 2
7	D-3	DRAINAGE DETAILS & QUANTITIES
8	SC-1	STAGE 1 CONSTRUCTION
9	SC-2	STAGE 2 CONSTRUCTION
10	SC-3	STAGE 3 CONSTRUCTION
11	R-1	RETAINING WALL PLAN & PROFILE
12	R-2	RETAINING WALL NOTES & DETAILS
13	R-3	RETAINING WALL NOTES & DETAILS

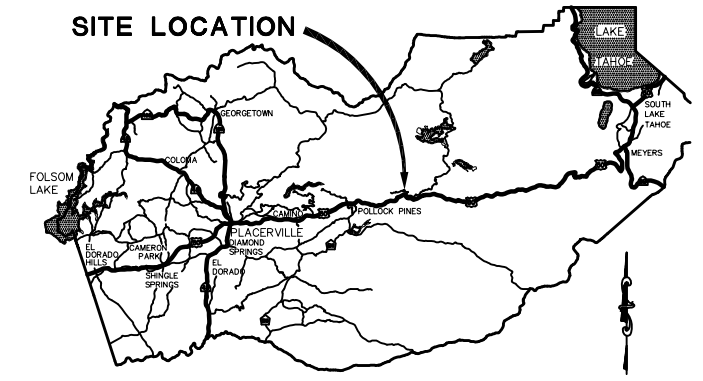
**DEPARTMENT OF TRANSPORTATION
COUNTY OF EL DORADO, CA**

**PROJECT PLANS FOR THE CONSTRUCTION OF
WHITE MEADOWS ROAD
SLIPOUT REPAIR**

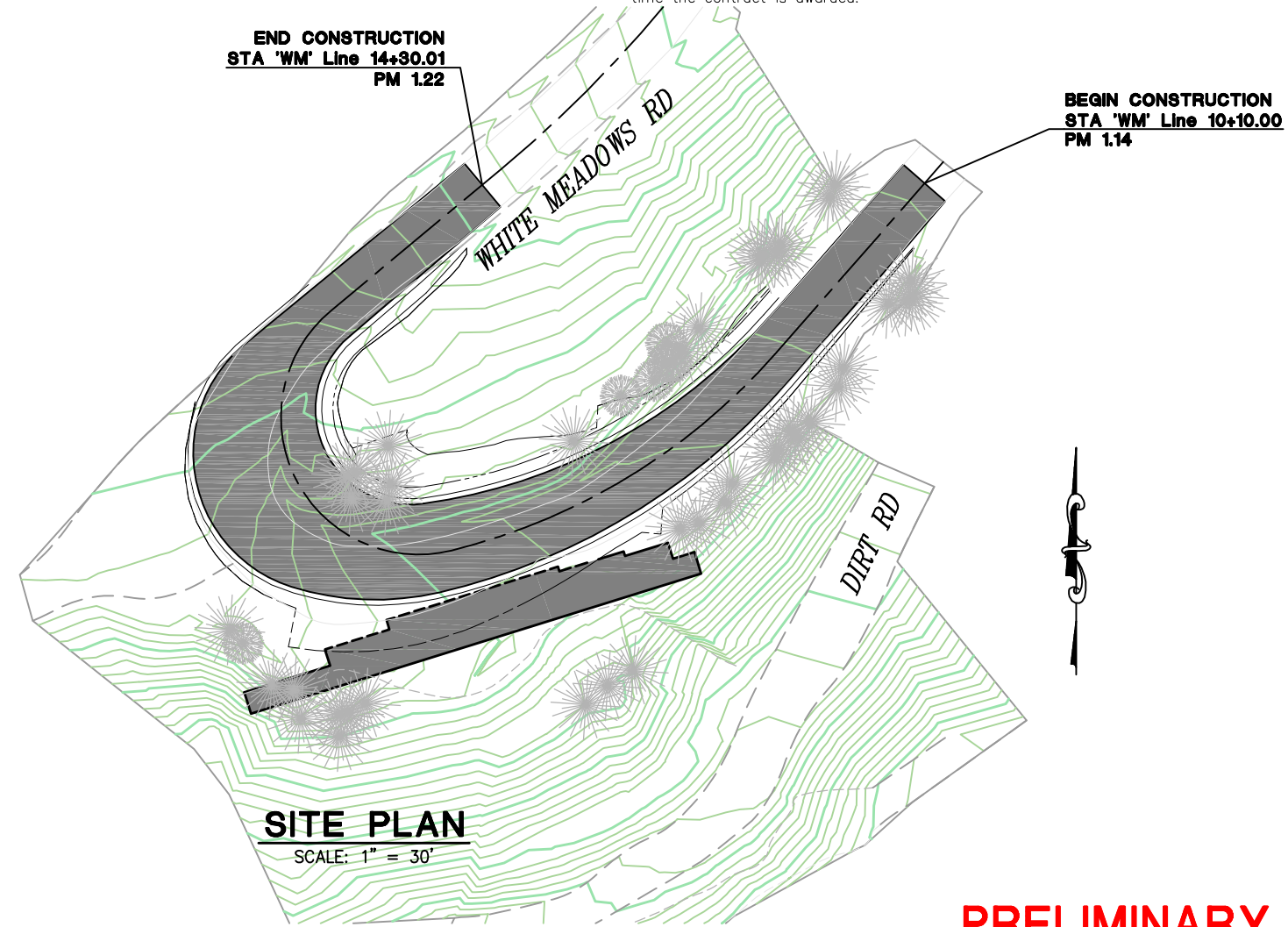
IN THE COUNTY OF EL DORADO, DISTRICT 4
APPROX. 1.25 MILES NORTHWEST OF THE U.S. HWY 50 AND ICE HOUSE ROAD INTERSECTION

To be supplemented with Standard Plans and Specifications dated May 2006, of the California Department of Transportation.

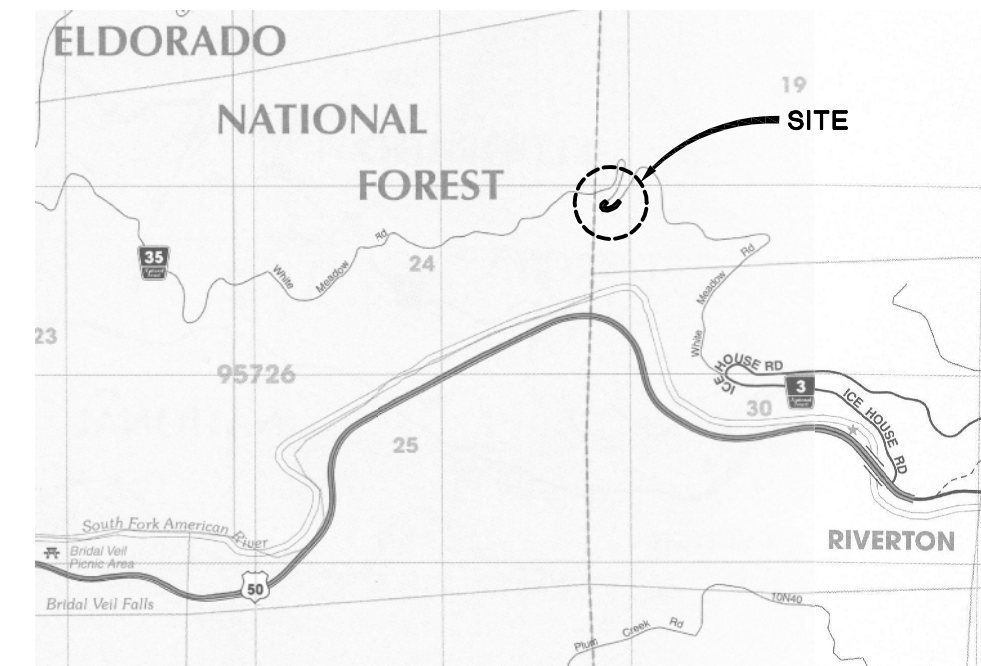
The Contractor's license Classification: In accordance with the provisions of California Public Contract Code 3300, the Owner has determined that the contractor shall possess a valid Class A General Engineering Contractor license, or a combination of classes required by the categories and type of work included in the contract, at the time the contract is awarded.



**VICINITY MAP
COUNTY OF EL DORADO**



**SITE PLAN
SCALE: 1" = 30'**



**LOCATION MAP
NOT TO SCALE**

PRELIMINARY 90% 08/01/07

SUBMITTED BY: STEVEN K. PAYNE
CIVIL ENGINEER
STATE OF CALIFORNIA NO. 16686
CADD BY: A. BISHOP

CONTRACT NO. 78669

APPROVED BY:

HELEN K. BAUMANN CHAIRMAN, EL DORADO COUNTY BOARD OF SUPERVISORS	DATE
RICHARD W. SHEPARD, P.E. NO. 35439 DIRECTOR, EL DORADO COUNTY DEPARTMENT OF TRANSPORTATION	DATE
ELIZABETH B. DIAMOND, P.E. NO. 34339 DEPUTY DIRECTOR, EL DORADO COUNTY DEPARTMENT OF TRANSPORTATION	DATE

**COUNTY OF EL DORADO
DEPARTMENT OF TRANSPORTATION**

2850 FAIRLANE COURT
PLACERVILLE, CA 95667
(916) 621-5900



REVISIONS

MARK	DATE	BY

BOARD OF SUPERVISORS

RUSTY DUPRAY	I
HELEN BAUMANN	II
JACK SWEENEY	III
RON BRIGGS	IV
NORMA SANTIAGO	V

**WHITE MEADOWS ROAD
SLIPOUT REPAIR
TITLE SHEET**

SHEET 1 OF 13

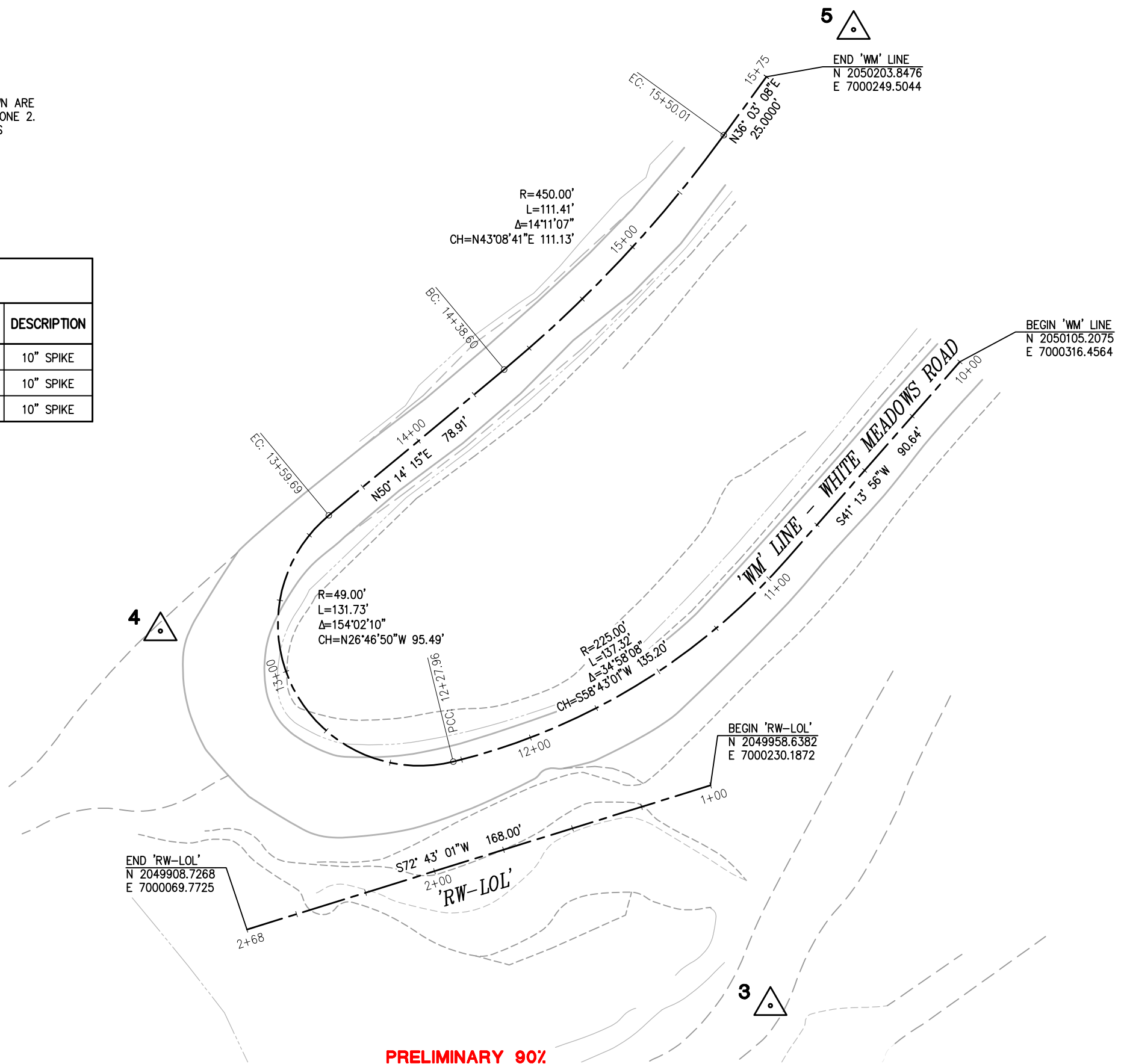
Drawing name: C:\Civil 3D Projects\78669 White Meadows Slipout\Drawings\Sheets\CD-1.dwg Layout Tab: CD-1 Aug 02,2007 - 2:57pm ABishop
 ORIGINAL SCALE IS IN INCHES
 FOR REDUCED PLANS

NOTE :

BEARINGS, DISTANCES, STATIONING AND COORDINATES SHOWN ARE ON THE CALIFORNIA STATE COORDINATE SYSTEM, NAD 83 ZONE 2. DISTANCES SHOWN ARE GRID DISTANCES. DIVIDE DISTANCES SHOWN BY 0.999762 TO OBTAIN GROUND DISTANCES.

CONTROL TABLE				
CONTROL NUMBER	NORTHING	EASTING	ELEVATION	DESCRIPTION
3	2049882.3945	7000250.9109	3504.83	10" SPIKE
4	2050012.0598	7000039.8341	3561.61	10" SPIKE
5	2050220.2039	7000279.6782	3589.04	10" SPIKE

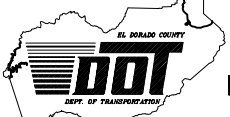
X  DENOTES CONTROL POINT AND NUMBER.



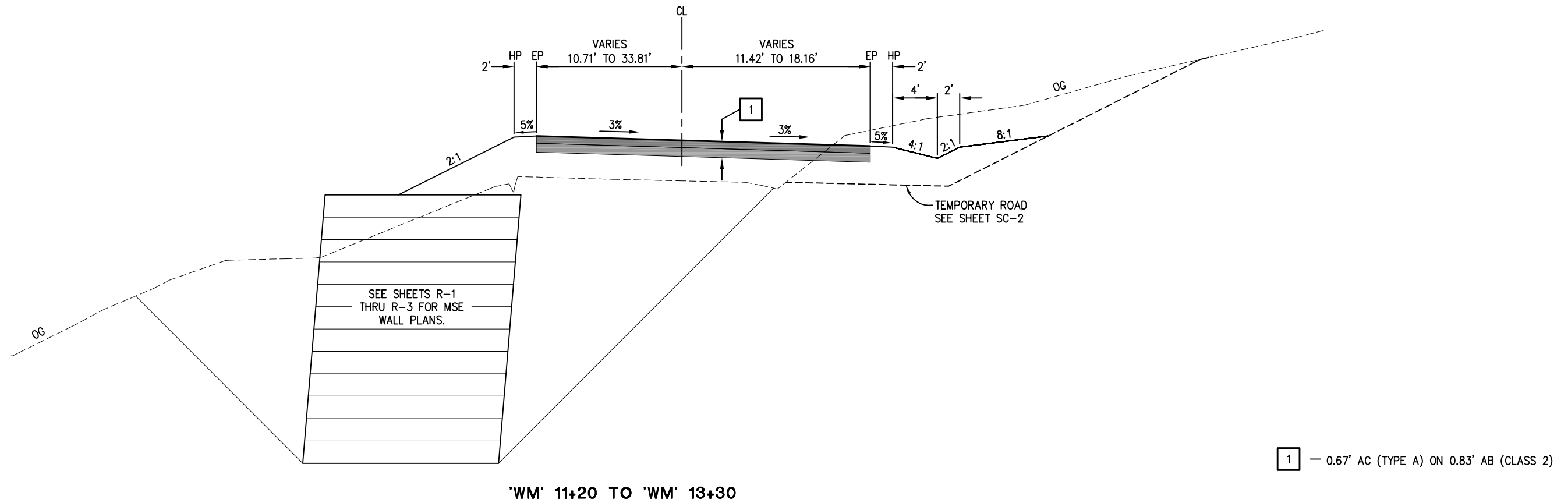
PRELIMINARY 90%

SURVEY CONTROL DIAGRAM
SCALE : 1" = 20'

REVISION	NUMBER	DATE	DESCRIPTION	BY

PREPARED UNDER THE SUPERVISION OF : _____ REGISTERED CIVIL ENGINEER DATE: _____	DESIGNED: SGM DRAWN: ARB CHECKED: SKP DATE: 08/01/07 ROAD NUMBER: 1041	 <p>EL DORADO COUNTY DEPARTMENT OF TRANSPORTATION</p>
--	--	---

<p>WHITE MEADOWS ROAD SLIPOUT REPAIR</p>	<p>SHEET CD-1 2 OF 13 W.O. No. 78669</p>
--	--



PRELIMINARY 90%

TYPICAL CROSS SECTIONS
SCALE : NONE

REVISION	NUMBER	DATE	DESCRIPTION	BY

PREPARED UNDER THE SUPERVISION OF :

REGISTERED CIVIL ENGINEER

DATE:

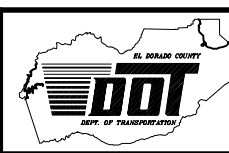
DESIGNED: SGM

DRAWN: ARB

CHECKED: SKP

DATE: 08/01/07

ROAD NUMBER: 1041

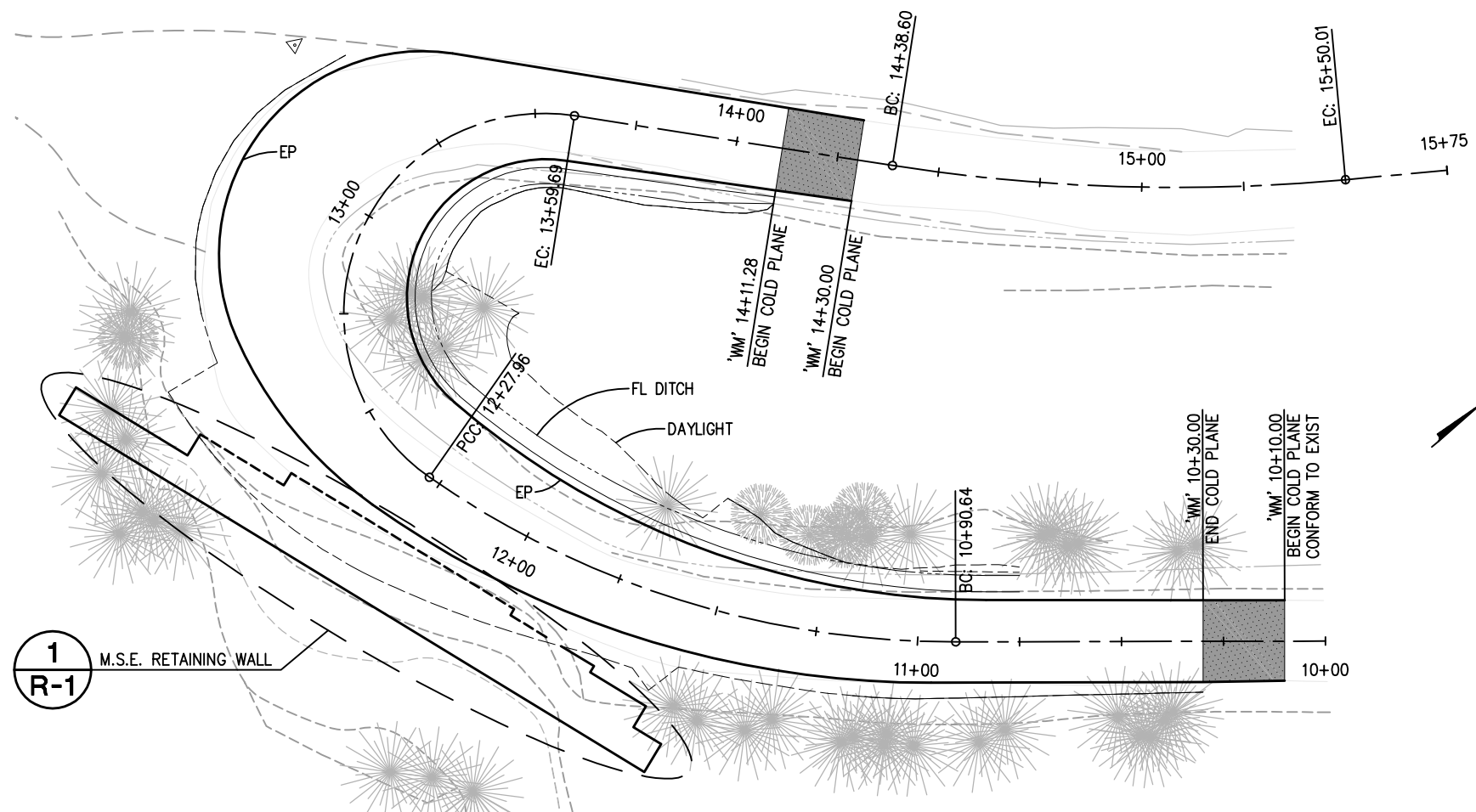


EL DORADO COUNTY
DEPARTMENT OF TRANSPORTATION

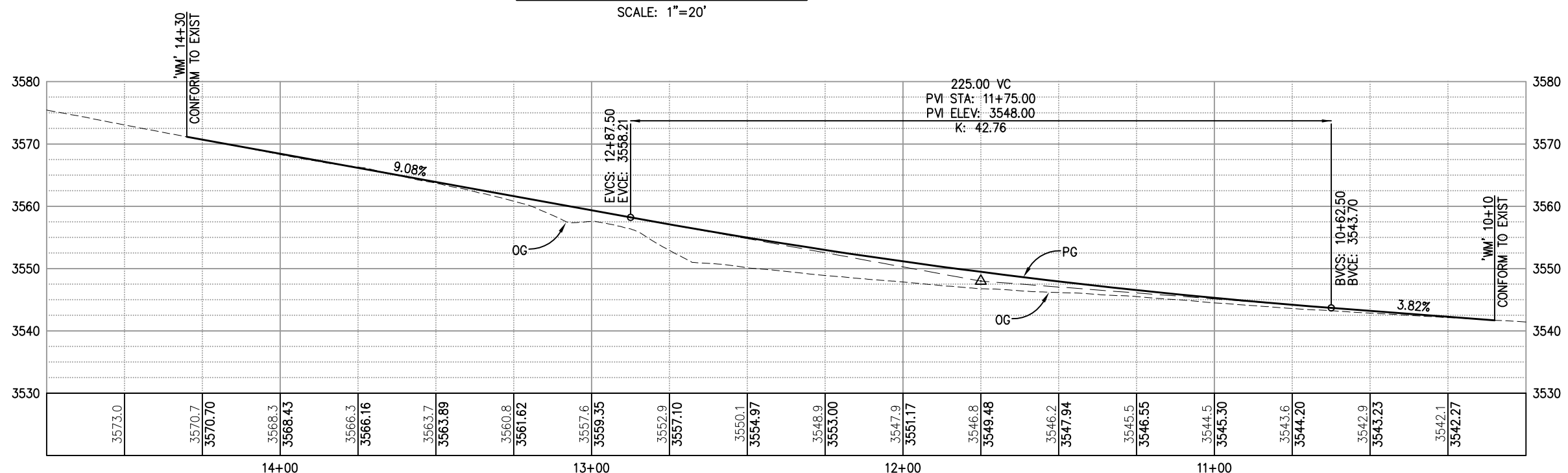
WHITE MEADOWS ROAD
SLIPOUT REPAIR

SHEET
X-1
3 OF 13
W.O. No. 78669

Drawing name: C:\Civil 3D Projects\78669 White Meadows Slipout\Drawings\Sheets\L-1.dwg Layout Tab: L-1 Aug 02, 2007 - 2:54pm ABishop
 ORIGINAL SCALE IS IN INCHES
 FOR REDUCED PLANS



PLAN - 'WM' LINE
SCALE: 1"=20'



PROFILE - 'WM' LINE
SCALE: 1"=20'H, 1"=10'V

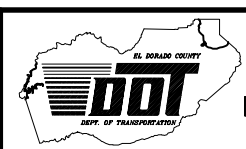
PRELIMINARY 90%

LAYOUT SCALE : AS SHOWN

REVISION	NUMBER	DATE	DESCRIPTION	BY

PREPARED UNDER THE SUPERVISION OF :
 REGISTERED CIVIL ENGINEER
 DATE: _____

DESIGNED: SGM
 DRAWN: ARB
 CHECKED: SKP
 DATE: 08/01/07
 ROAD NUMBER: 1041

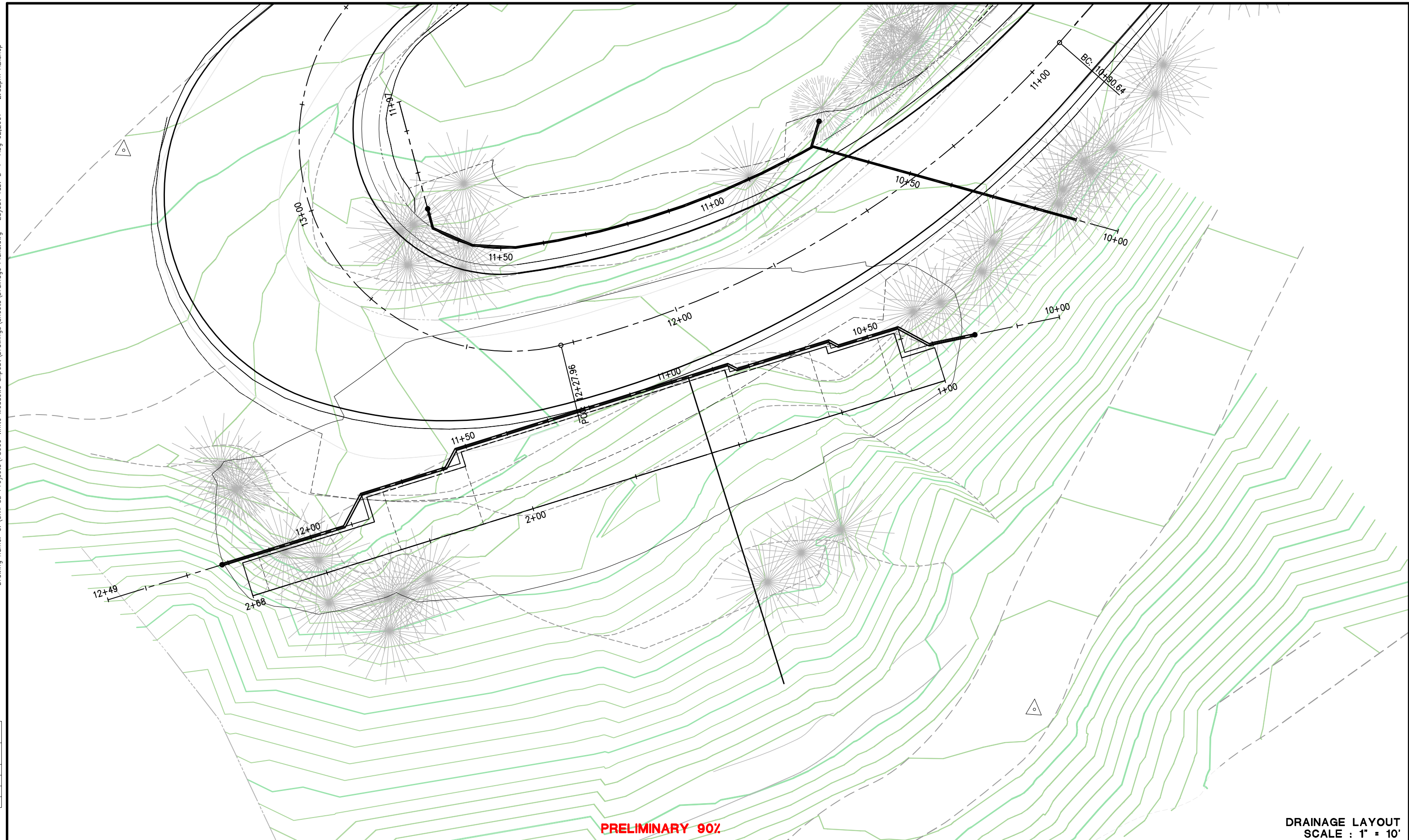


EL DORADO COUNTY
DEPARTMENT OF TRANSPORTATION

WHITE MEADOWS ROAD
SLIPOUT REPAIR

SHEET
L-1
4 OF 13
W.O. No. **78669**

Drawing name: C:\Civil 3D Projects\78669 White Meadows Slipout\Drawings\Sheets\Drainage Plans.dwg Layout Tab: D-1 Aug 02,2007 - 2:52pm ABishop
 ORIGINAL SCALE IS IN INCHES
 FOR REDUCED PLANS



PRELIMINARY 90%

**DRAINAGE LAYOUT
SCALE : 1" = 10'**

REVISION	NUMBER	DATE	DESCRIPTION	BY

PREPARED UNDER THE SUPERVISION OF :

REGISTERED CIVIL ENGINEER

DATE: _____

DESIGNED: **BBC** DRAWN: **ARB**

CHECKED: **SKP** DATE: **07/24/07**

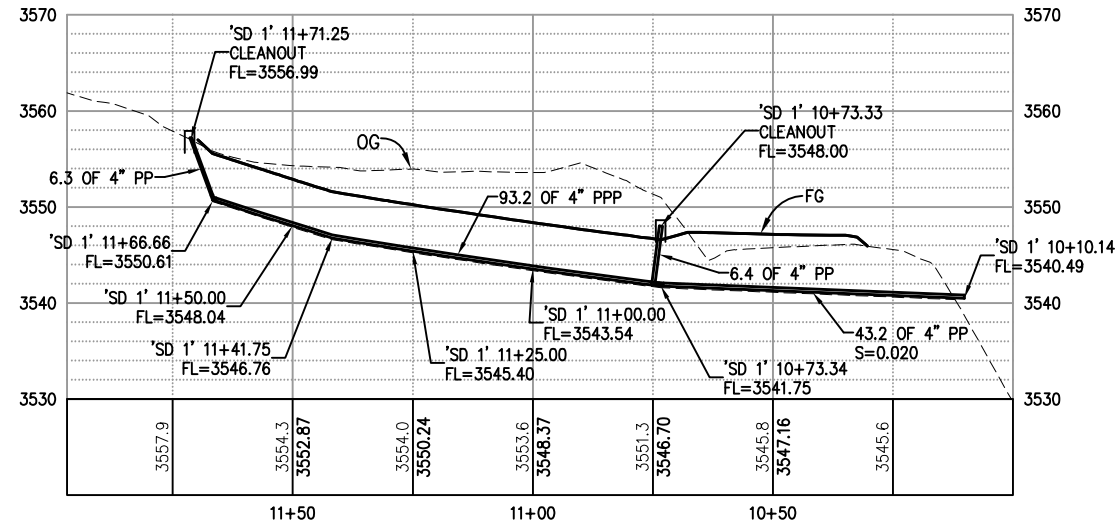
ROAD NUMBER: **1041**

EL DORADO COUNTY
DEPARTMENT OF TRANSPORTATION

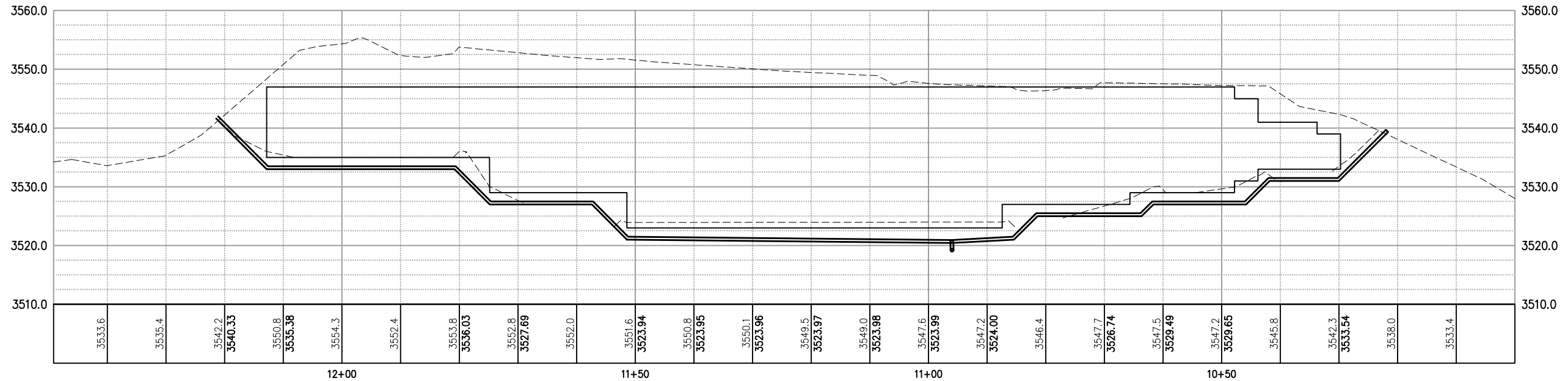
**WHITE MEADOWS ROAD
SLIPOUT REPAIR**

SHEET
D-1
5 OF 13
W.O. No. **78669**

FOR REDUCED PLANS ORIGINAL SCALE IS IN INCHES
 Drawing name: C:\Civil 3D Projects\78669 White Meadows Slipout\Drawings\Sheets\Drainage Plans.dwg Layout Tab: D-2 Aug 02,2007 - 2:47pm ABishop



'SD 1' SUBDRAIN PROFILE
 SCALE: 1"=20'H, 1"=10'V



'SD 2' MSE Wall Drain PROFILE
 SCALE: 1"=10'H, 1"=10'V

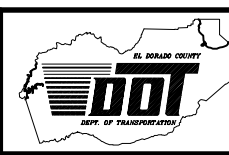
PRELIMINARY 90%

**M.S.E. RETAINING WALL
 SCALE : AS SHOWN**

REVISION	NUMBER	DATE	DESCRIPTION	BY

PREPARED UNDER THE SUPERVISION OF :
 REGISTERED CIVIL ENGINEER
 DATE: _____

DESIGNED: BBC
 DRAWN: ARB
 CHECKED: SKP
 DATE: 07/24/07
 ROAD NUMBER: 1041

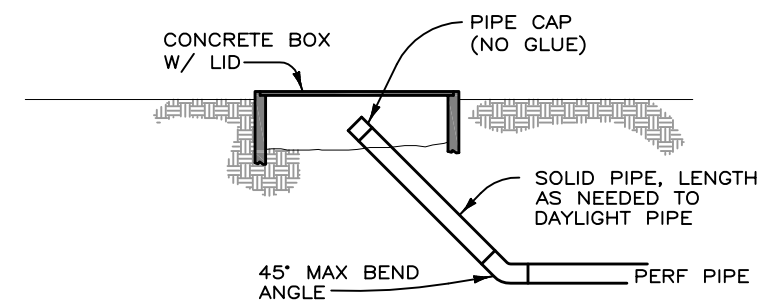


**EL DORADO COUNTY
 DEPARTMENT OF TRANSPORTATION**

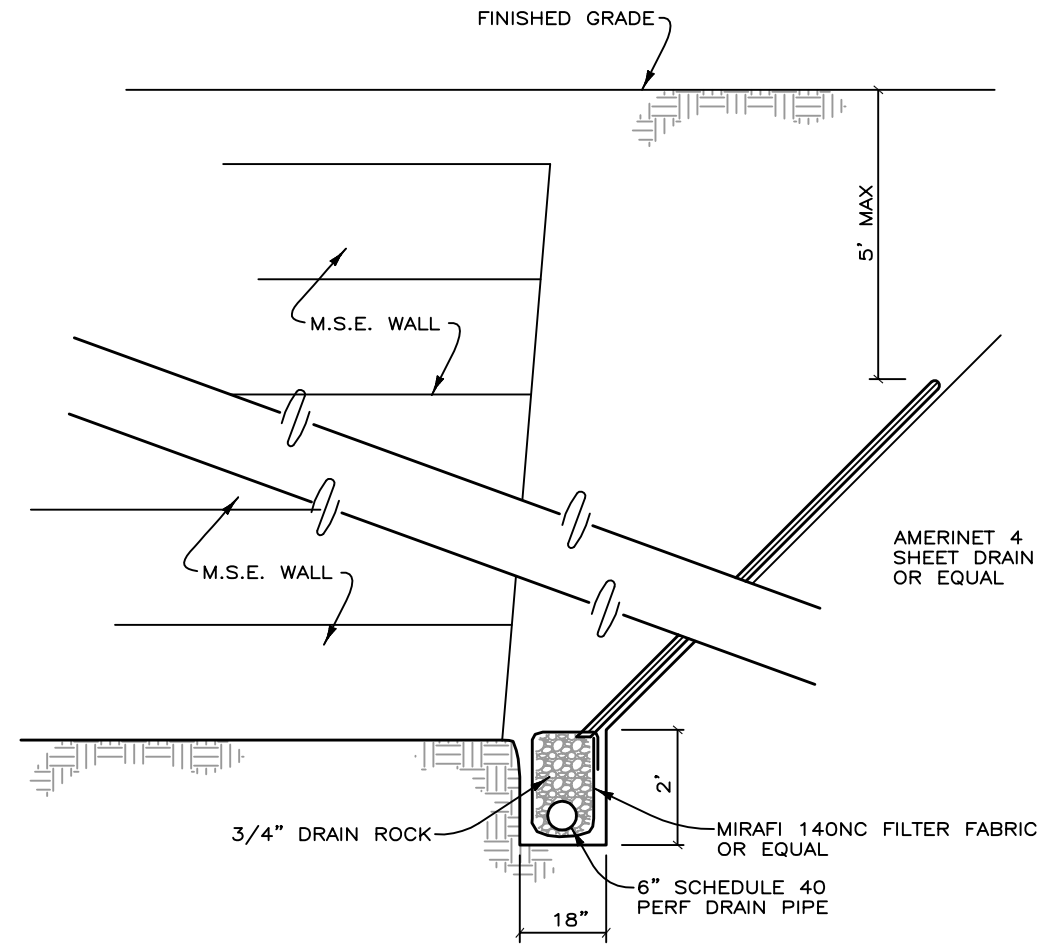
**WHITE MEADOWS ROAD
 SLIPOUT REPAIR**

SHEET
D-2
 6 OF 13
 W.O. No. **78669**

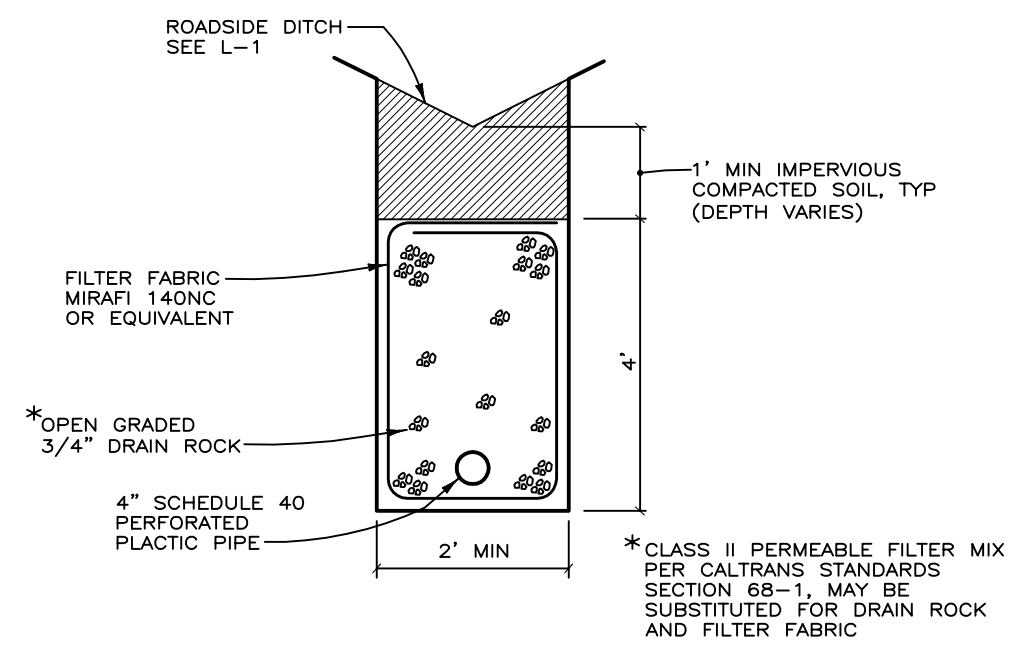
Drawing name: C:\Civil 3D Projects\78669 White Meadows Slipout\Drawings\Sheets\Drainage Plans.dwg
 Layout Tab: D-3 Aug 02, 2007 - 2:45pm ABishop
 ORIGINAL SCALE IS IN INCHES
 FOR REDUCED PLANS



CLEAN OUT DETAIL
NTS



WALL DRAIN DETAIL
NTS



SUBDRAIN DETAIL
NTS

PRELIMINARY 90%

M.S.E. RETAINING WALL
SCALE : AS SHOWN

REVISION	NUMBER	DATE	DESCRIPTION	BY

PREPARED UNDER THE SUPERVISION OF :

REGISTERED CIVIL ENGINEER

DATE:

DESIGNED: BBC

DRAWN: ARB

CHECKED: SKP

DATE: 07/24/07

ROAD NUMBER: 1041

EL DORADO COUNTY
DEPARTMENT OF TRANSPORTATION

WHITE MEADOWS ROAD
SLIPOUT REPAIR

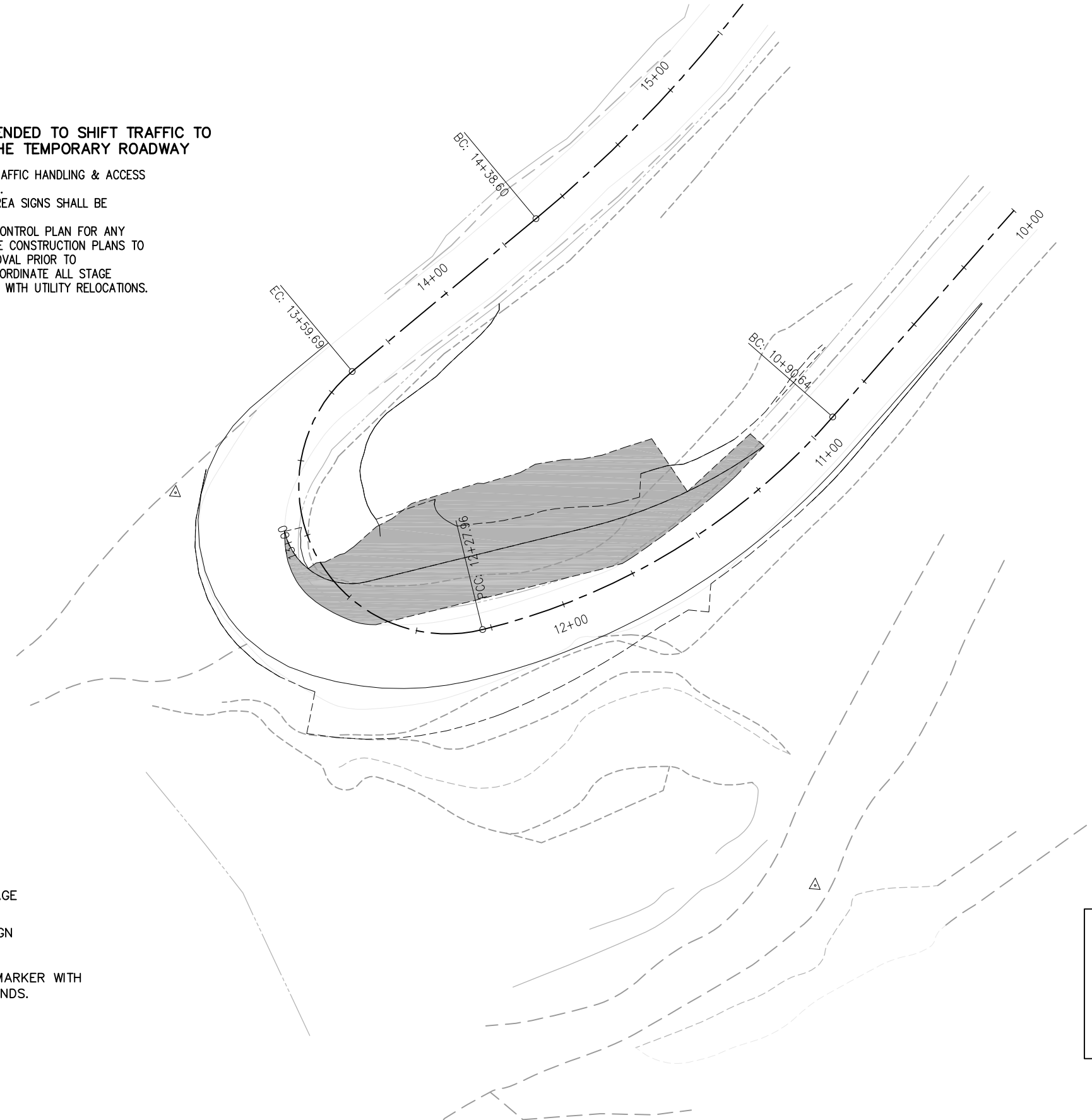
SHEET
D-3
7 OF 13
W.O. No. **78669**

Drawing name: C:\Civil 3D Projects\78669 White Meadows Slipout\Drawings\Sheets\SC-1.dwg Layout Tab: SC-1 Aug 02,2007 - 2:43pm ABishop
 ORIGINAL SCALE IS IN INCHES
 2
 1
 0
 FOR REDUCED PLANS
 REVISION
 NUMBER DATE DESCRIPTION BY

STAGE 1 NOTES:

STAGE 1 CONSTRUCTION IS INTENDED TO SHIFT TRAFFIC TO THE SOUTH AND CONSTRUCT THE TEMPORARY ROADWAY

1. REFER TO SPECIAL PROVISIONS FOR TRAFFIC HANDLING & ACCESS REQUIREMENTS WITHIN THE WORK AREA.
2. EXACT LOCATION OF CONSTRUCTION AREA SIGNS SHALL BE DETERMINED BY ENGINEER.
3. CONTRACTOR SHALL SUBMIT TRAFFIC CONTROL PLAN FOR ANY DETOURS AND CHANGES ON THE STAGE CONSTRUCTION PLANS TO THE ENGINEER FOR REVIEW AND APPROVAL PRIOR TO IMPLEMENTATION. CONTRACTOR TO COORDINATE ALL STAGE CONSTRUCTION AND TRAFFIC HANDLING WITH UTILITY RELOCATIONS.



LEGEND

- CONSTRUCTION THIS STAGE
- CONSTRUCTION AREA SIGN (TYPE AS INDICATED)
- 28" ORANGE TUBULAR MARKER WITH 3" RETROREFLECTIVE BANDS.
- FLOW OF TRAFFIC

GENERAL STAGE CONSTRUCTION NOTE:

THESE STAGE CONSTRUCTION PLANS ARE MEANT TO SERVE AS A GUIDELINE IN ESTABLISHING TRAFFIC CONTROL AND CONSTRUCTION STAGING. SOME MODIFICATION OR ALTERATION MAY BE NEEDED TO ACCOMMODATE FIELD CONDITIONS AND TRAFFIC MOVEMENTS. CONTRACTOR SHALL OBTAIN PRIOR ENGINEERING APPROVAL IF ANY CHANGES OR DEVIATIONS FROM THESE PLANS ARE PROPOSED.

PRELIMINARY 90%

**STAGE 1 CONSTRUCTION
SCALE : 1" = 20'**

REVISION	NUMBER	DATE	DESCRIPTION	BY

PREPARED UNDER THE SUPERVISION OF : REGISTERED CIVIL ENGINEER DATE:	DESIGNED: SGM DRAWN: ARB CHECKED: SKP DATE: 08/01/07 ROAD NUMBER: 1041
---	--

EL DORADO COUNTY
DEPARTMENT OF TRANSPORTATION

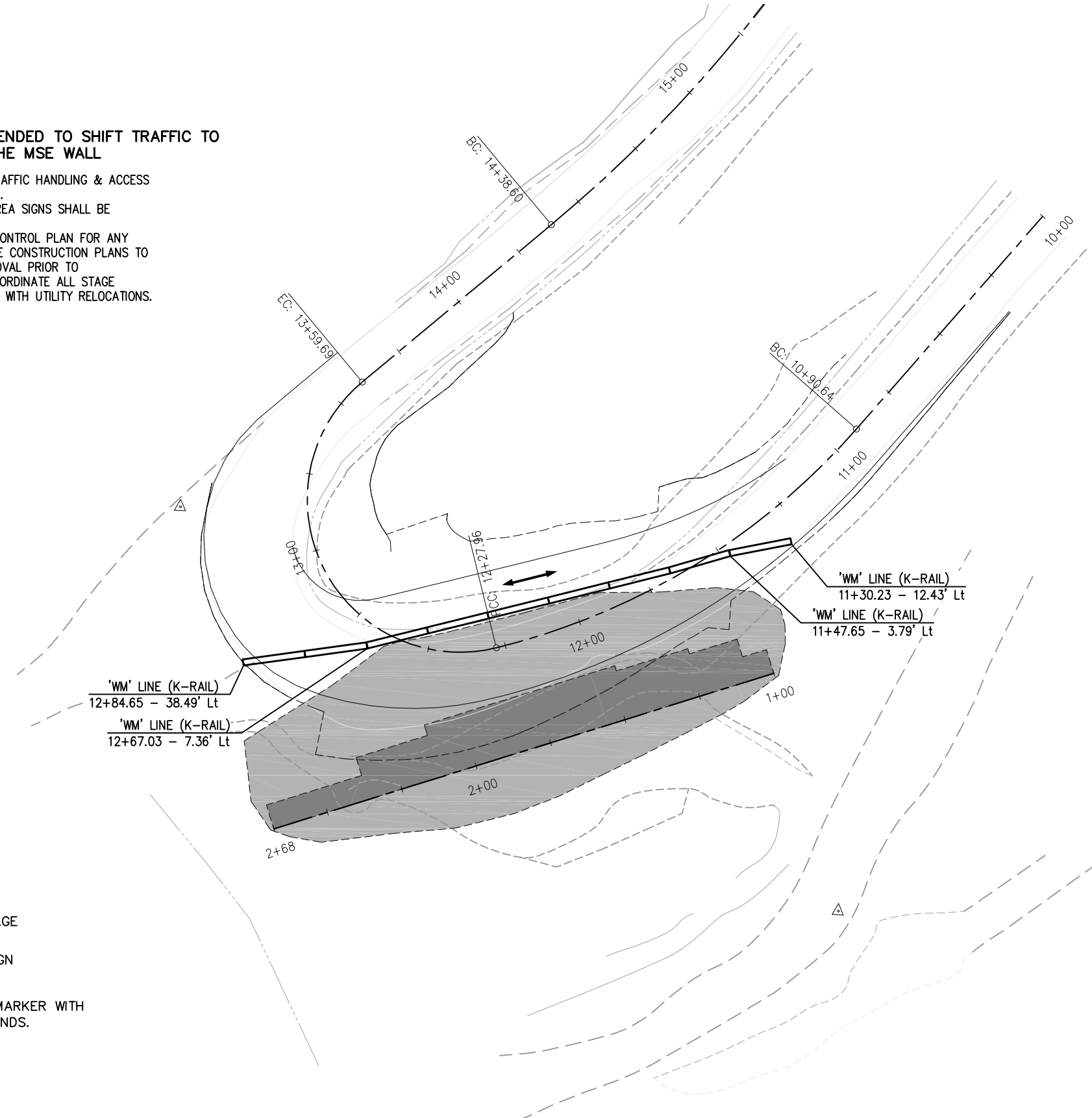
<p>WHITE MEADOWS ROAD SLIPOUT REPAIR</p>	<p>SHEET SC-1 8 OF 13 W.O. No. 78669</p>
---	--

Drawing name: C:\Civil 3D Projects\78669 White Meadows Slipout\Drawings\Sheets\SC-1.dwg Layout Tab: SC-2 Aug 02, 2007 - 2:41pm ABishop
 ORIGINAL SCALE IS IN INCHES
 FOR REDUCED PLANS




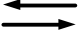

STAGE 2 NOTES:

STAGE 2 CONSTRUCTION IS INTENDED TO SHIFT TRAFFIC TO THE NORTH AND CONSTRUCT THE MSE WALL

1. REFER TO SPECIAL PROVISIONS FOR TRAFFIC HANDLING & ACCESS REQUIREMENTS WITHIN THE WORK AREA.
2. EXACT LOCATION OF CONSTRUCTION AREA SIGNS SHALL BE DETERMINED BY ENGINEER.
3. CONTRACTOR SHALL SUBMIT TRAFFIC CONTROL PLAN FOR ANY DETOURS AND CHANGES ON THE STAGE CONSTRUCTION PLANS TO THE ENGINEER FOR REVIEW AND APPROVAL PRIOR TO IMPLEMENTATION. CONTRACTOR TO COORDINATE ALL STAGE CONSTRUCTION AND TRAFFIC HANDLING WITH UTILITY RELOCATIONS.



LEGEND

-  CONSTRUCTION THIS STAGE
-  CONSTRUCTION AREA SIGN (TYPE AS INDICATED)
-  28" ORANGE TUBULAR MARKER WITH 3" RETROREFLECTIVE BANDS.
-  FLOW OF TRAFFIC
-  K-RAIL

GENERAL STAGE CONSTRUCTION NOTE:

THESE STAGE CONSTRUCTION PLANS ARE MEANT TO SERVE AS A GUIDELINE IN ESTABLISHING TRAFFIC CONTROL AND CONSTRUCTION STAGING. SOME MODIFICATION OR ALTERATION MAY BE NEEDED TO ACCOMMODATE FIELD CONDITIONS AND TRAFFIC MOVEMENTS. CONTRACTOR SHALL OBTAIN PRIOR ENGINEERING APPROVAL IF ANY CHANGES OR DEVIATIONS FROM THESE PLANS ARE PROPOSED.

PRELIMINARY 90%

**STAGE 2 CONSTRUCTION
SCALE : 1" = 20'**

REVISION	NUMBER	DATE	DESCRIPTION	BY

PREPARED UNDER THE SUPERVISION OF : REGISTERED CIVIL ENGINEER	DESIGNED: SGM DRAWN: ARB CHECKED: SKP DATE: 08/01/07 ROAD NUMBER: 1041
--	--



EL DORADO COUNTY
DEPARTMENT OF TRANSPORTATION

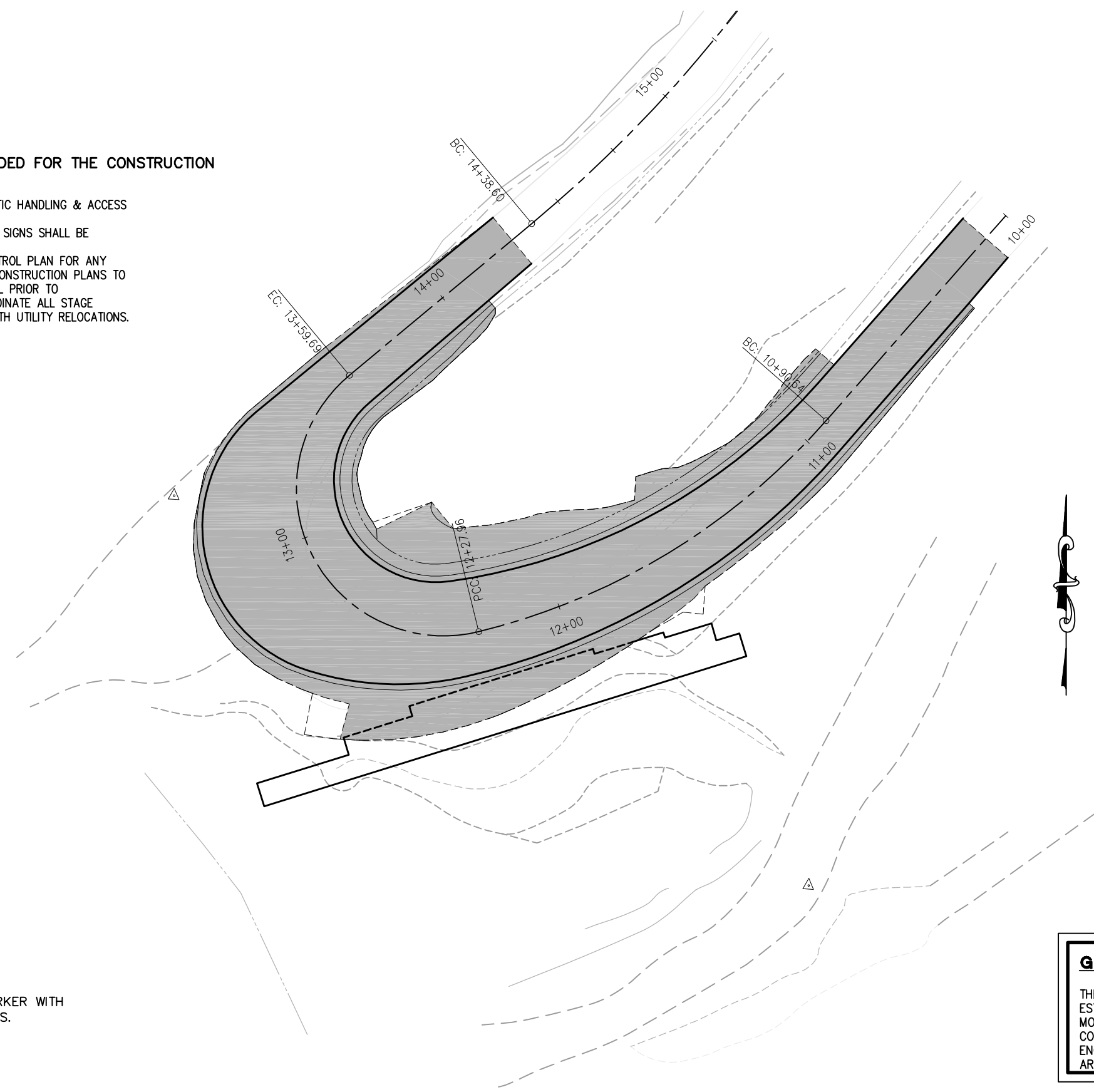
<p>WHITE MEADOWS ROAD SLIPOUT REPAIR</p>	<p>SHEET SC-2 9 OF 13 W.O. No. 78669</p>
---	--

Drawing name: C:\Civil 3D Projects\78669 White Meadows Slipout\Drawings\Sheets\SC-3.dwg Layout Tab: SC-3 Aug 02, 2007 - 2:27pm ABishop
 ORIGINAL SCALE IS IN INCHES
 FOR REDUCED PLANS

STAGE 3 NOTES:

STAGE 3 CONSTRUCTION IS INTENDED FOR THE CONSTRUCTION OF PROPOSED ROADWAY.

1. REFER TO SPECIAL PROVISIONS FOR TRAFFIC HANDLING & ACCESS REQUIREMENTS WITHIN THE WORK AREA.
2. EXACT LOCATION OF CONSTRUCTION AREA SIGNS SHALL BE DETERMINED BY ENGINEER.
3. CONTRACTOR SHALL SUBMIT TRAFFIC CONTROL PLAN FOR ANY DETOURS AND CHANGES ON THE STAGE CONSTRUCTION PLANS TO THE ENGINEER FOR REVIEW AND APPROVAL PRIOR TO IMPLEMENTATION. CONTRACTOR TO COORDINATE ALL STAGE CONSTRUCTION AND TRAFFIC HANDLING WITH UTILITY RELOCATIONS.



LEGEND

- CONSTRUCTION THIS STAGE
- CONSTRUCTION AREA SIGN (TYPE AS INDICATED)
- 28" ORANGE TUBULAR MARKER WITH 3" RETROREFLECTIVE BANDS.
- FLOW OF TRAFFIC

GENERAL STAGE CONSTRUCTION NOTE:

THESE STAGE CONSTRUCTION PLANS ARE MEANT TO SERVE AS A GUIDELINE IN ESTABLISHING TRAFFIC CONTROL AND CONSTRUCTION STAGING. SOME MODIFICATION OR ALTERATION MAY BE NEEDED TO ACCOMMODATE FIELD CONDITIONS AND TRAFFIC MOVEMENTS. CONTRACTOR SHALL OBTAIN PRIOR ENGINEERING APPROVAL IF ANY CHANGES OR DEVIATIONS FROM THESE PLANS ARE PROPOSED.

PRELIMINARY 90%

**STAGE 3 CONSTRUCTION
SCALE : 1" = 20'**

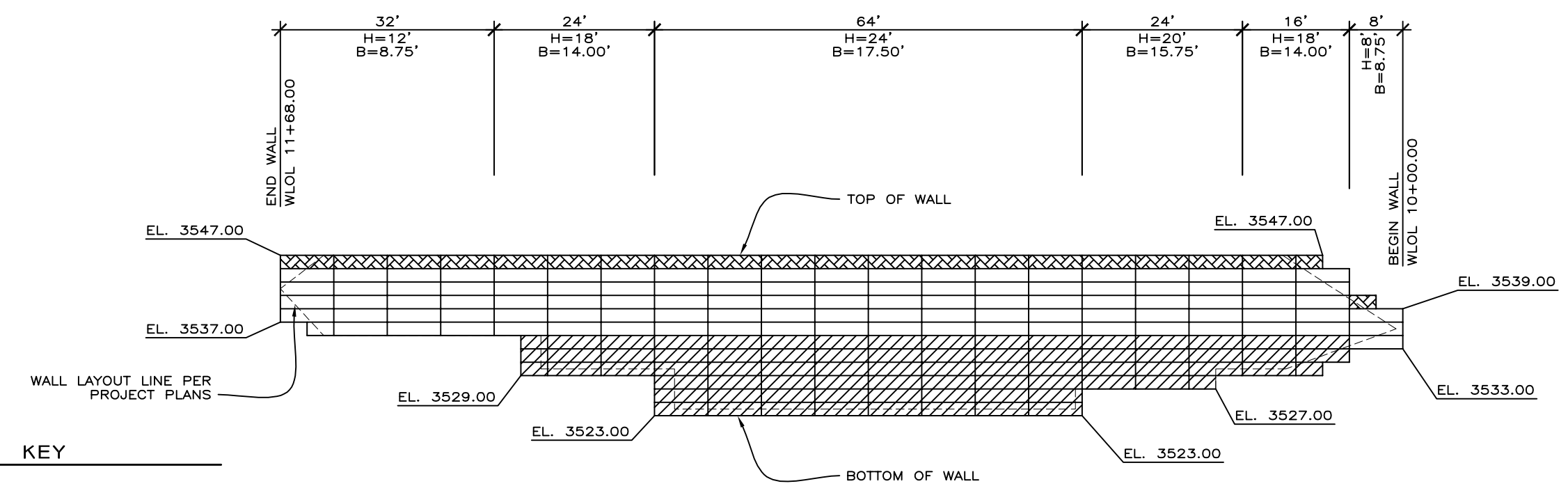
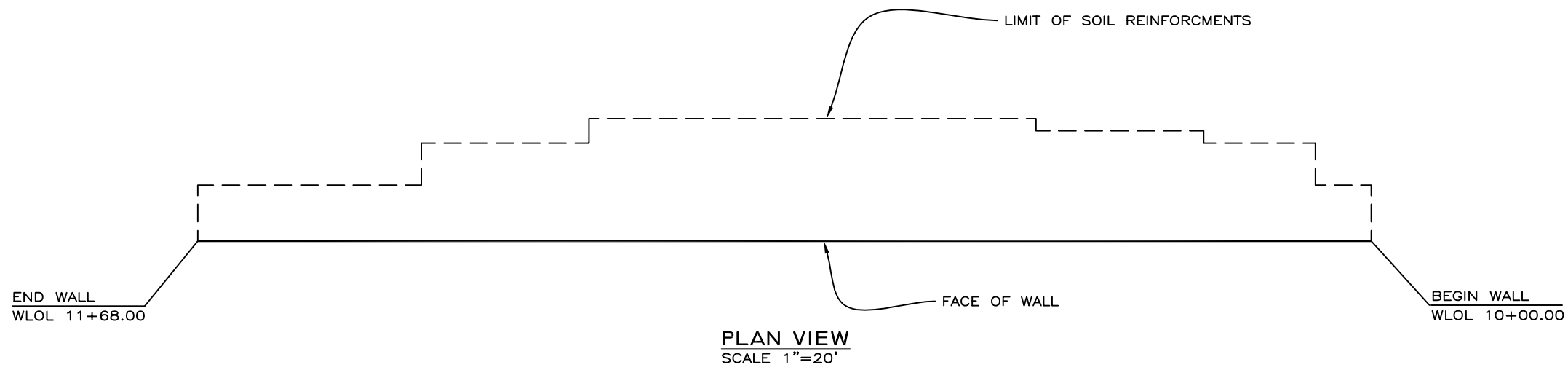
REVISION	NUMBER	DATE	DESCRIPTION	BY

PREPARED UNDER THE SUPERVISION OF : REGISTERED CIVIL ENGINEER DATE:	DESIGNED: SGM DRAWN: ARB CHECKED: SKP DATE: 08/01/07 ROAD NUMBER: 1041
---	--

EL DORADO COUNTY
DEPARTMENT OF TRANSPORTATION

<p>WHITE MEADOWS ROAD SLIPOUT REPAIR</p>	<p>SHEET SC-3 10 OF 13 W.O. No. 78669</p>
---	---

Drawing name: C:\Civil 3D Projects\78669 White Meadows Slipout\Drawings\Sheets\RW Plans.dwg Layout Tab: R-1 Aug 02, 2007 - 2:24pm ABishop
 ORIGINAL SCALE IS IN INCHES
 FOR REDUCED PLANS



- KEY**
- H TOTAL HEIGHT OF WALL AT EACH SEGMENT
 - B BASE LENGTH WIRE MATS
 - W4.5 X 3.5 FULL LENGTH CAP MAT AND PRONGLESS MAT (8"X12" WIRE SPACING)
 - W7.0 X 4.0 (8"X21" WIRE SPACING) FULL LENGTH MATS. SEE B FOR MAT LENGTH.
 - W9.5 X 4.0 (8"X21" WIRE SPACING) FULL LENGTH MATS. SEE B FOR MAT LENGTH.

PRELIMINARY 90%

COLLINS ENGINEERS
 259 Nevada Street
 Suite 100
 Auburn, CA 95603
 Tele. (530) 887-8151
 Fax (530) 887-0911
 www.collinsengr.com

M.S.E. RETAINING WALL
SCALE : AS SHOWN

REVISION	NUMBER	DATE	DESCRIPTION	BY

PREPARED UNDER THE SUPERVISION OF :	DESIGNED: TAJ	DRAWN: KPC
REGISTERED CIVIL ENGINEER	CHECKED: SKP/ORM	DATE: 08/01/07
DATE:	ROAD NUMBER: 1041	

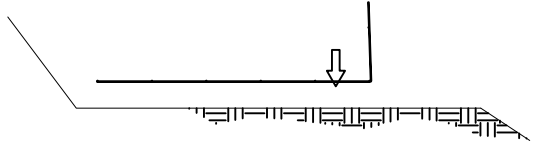
EL DORADO COUNTY
 DEPARTMENT OF TRANSPORTATION

WHITE MEADOWS ROAD
SLIPOUT REPAIR

SHEET
R-1
 11 OF 13
 W.O. No. **78669**

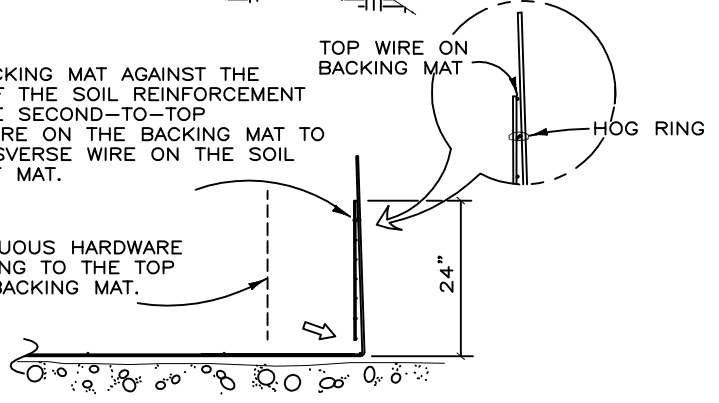
Drawing name: C:\Civil 3D Projects\78669 White Meadows Slipout\Drawings\Sheets\RW Plans.dwg Layout Tab: R-2 Aug 02,2007 - 2:21pm ABishop
 ORIGINAL SCALE IS IN INCHES
 FOR REDUCED PLANS

STEP 1
 PLACE THE FIRST COURSE OF SOIL REINFORCEMENT MATS ON PREPARED FOUNDATION



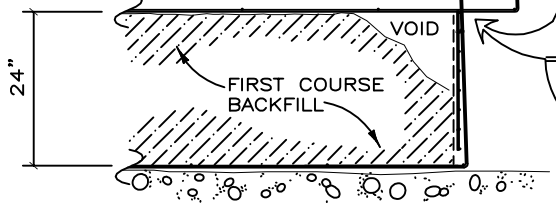
STEP 2
 PLACE THE BACKING MAT AGAINST THE INSIDE FACE OF THE SOIL REINFORCEMENT MAT. CLIP THE SECOND-TO-TOP TRANSVERSE WIRE ON THE BACKING MAT TO THE TOP TRANSVERSE WIRE ON THE SOIL REINFORCEMENT MAT.

INSTALL CONTINUOUS HARDWARE CLOTH, HOG-RING TO THE TOP WIRE ON THE BACKING MAT.

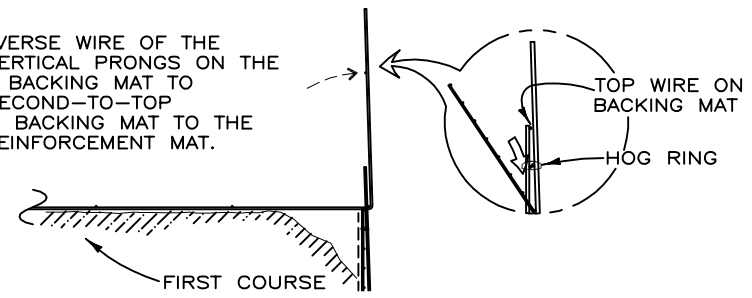


STEP 3
 PLACE AND COMPACT THE BACKFILL IN LAYERS AND DENSITIES AS SPECIFIED IN THE PROJECT PLANS. LEAVE A VOID AT THE FACE AS SHOWN.

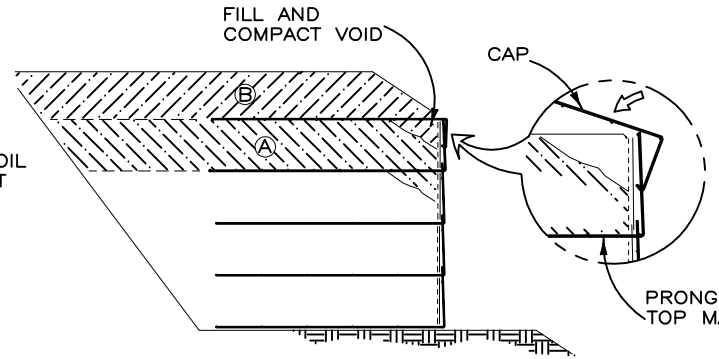
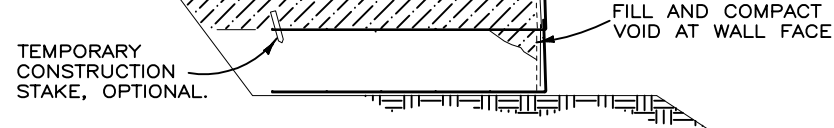
PLACE THE SECOND COURSE OF SOIL REINFORCEMENT MATS WITH THE BASE LONGITUDINAL WIRES RESTING ON THE TOP TRANSVERSE WIRE OF THE BACKING MAT BELOW. SLIDE THE SOIL REINFORCEMENT MAT INTO ALIGNMENT.



STEP 4
 HOOK THE BOTTOM TRANSVERSE WIRE OF THE BACKING MAT OVER THE VERTICAL PRONGS ON THE LOWER MAT. ROTATE THE BACKING MAT TO VERTICAL AND CLIP THE SECOND-TO-TOP TRANSVERSE WIRE ON THE BACKING MAT TO THE TOP WIRE ON THE SOIL REINFORCEMENT MAT.

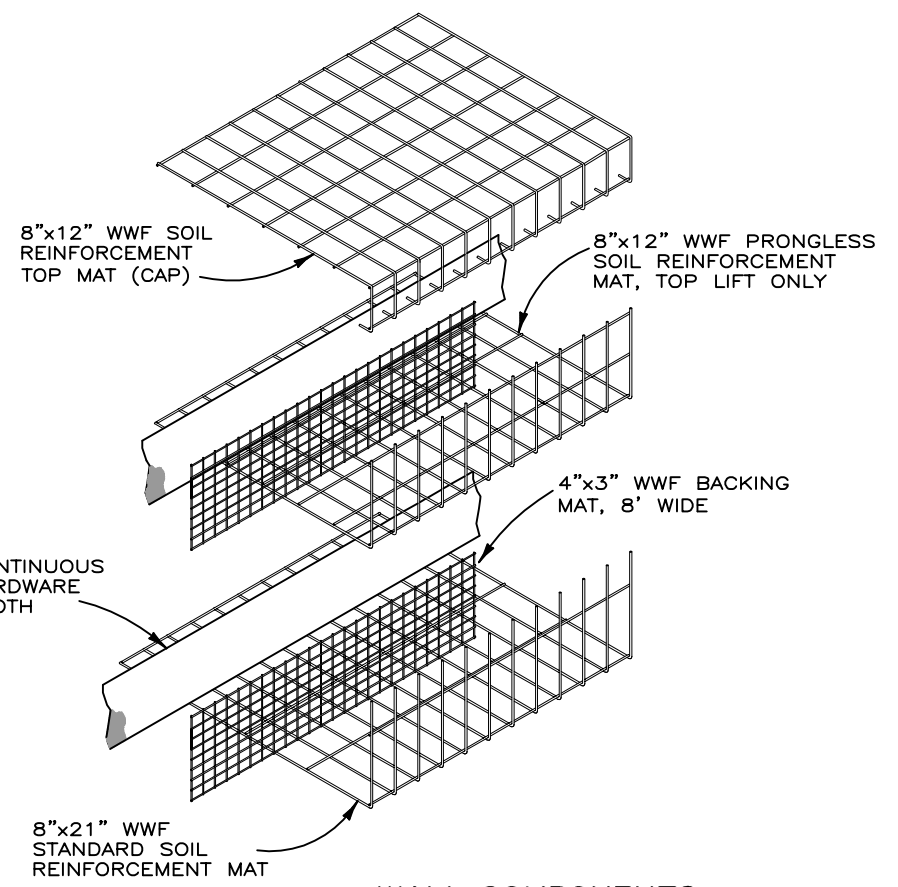


STEP 5
 INSTALL THE HARDWARE CLOTH. PLACE AND COMPACT THE BACKFILL TO THE BASE ELEVATION OF THE NEXT MAT. REPEAT STEPS 3 THROUGH 5 TO THE TOP LIFT.



STEP 6: TOP LIFT
 PLACE THE TOP LIFT PRONGLESS MAT, BACKING MAT AND HARDWARE CLOTH. PLACE AND COMPACT BACKFILL IN AREA "A". HOOK THE CAP OVER THE MIDDLE TRANSVERSE WIRE ON THE PRONGLESS MAT, AND ROTATE INTO PLACE. BACKFILL "B" TO 1'-6" MIN. COVER OVER THE CAP.

CONSTRUCTION SEQUENCE
 NOT TO SCALE



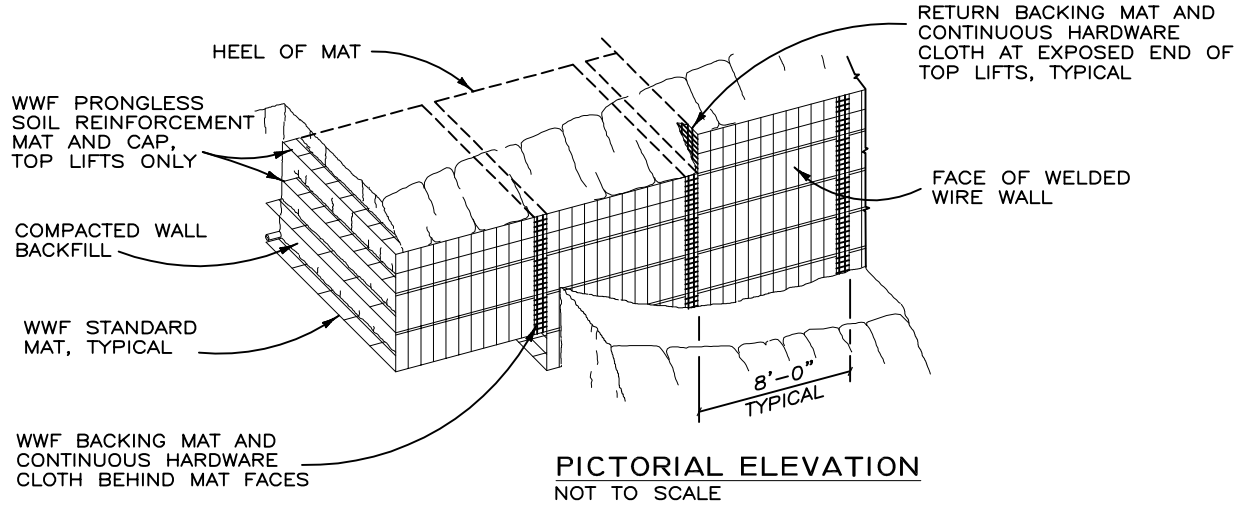
WALL COMPONENTS
 NOT TO SCALE

PROJECT-SPECIFIC NOTES:

1. REFERENCE DRAWINGS: BLACKBURN CONSTRUCTION DRAWINGS DATED JUNE 14TH, 2007, RECEIVED IN PDF FORMAT.
2. IT IS ASSUMED THAT ALL MATERIALS, BACKFILL AND CONSTRUCTION METHODS FOR HILFIKER M.S.E. WALLS WILL CONFORM TO HILFIKER'S SPECIFICATIONS AND/OR THOSE OF THE HILFIKER ENGINEERING CONSULTANT.
3. THIS IS NOT AN ENGINEERED SUBMITTAL. ALL INFORMATION HEREON IS DERIVED FROM THE REFERENCE DRAWINGS, AND IS SUBJECT TO GEOMETRIC AND GEOTECHNICAL CONFIRMATION. THE APPLICABLE HILFIKER CONSTRUCTION GUIDE AND SPECIFICATIONS ARE AN INTEGRAL PART OF THIS SUBMITTAL.
4. UPON ENGINEERED DESIGN, HILFIKER RETAINING WALLS SHALL NOT BE RESPONSIBLE FOR THE GLOBAL STABILITY OR FOUNDATION BEARING CAPACITY. THE OWNER/CONTRACTOR SHALL BE RESPONSIBLE FOR ALL JOB SITE DRAINAGE, SAFETY AND FALL PROTECTION PROVISIONS FOR WORKERS IN COMPLIANCE WITH OSHA AND ANY OTHER APPLICABLE REQUIREMENTS.

SUPPLIED QUANTITIES:

TOTAL AREA = 3,120 SQFT



PICTORIAL ELEVATION
 NOT TO SCALE

PRELIMINARY 90%

COLLINS ENGINEERS
 259 Nevada Street
 Suite 100
 Auburn, CA 95603
 Tele. (530) 887-8151
 Fax (530) 887-0911
 www.collinsengr.com

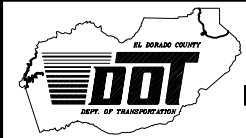
M.S.E. RETAINING WALL
 SCALE : AS SHOWN

REVISION	NUMBER	DATE	DESCRIPTION	BY

PREPARED UNDER THE SUPERVISION OF :

 REGISTERED CIVIL ENGINEER
 DATE: _____

DESIGNED: TAJ
 DRAWN: KPC
 CHECKED: SKP/ORM
 DATE: 08/01/07
 ROAD NUMBER: 1041

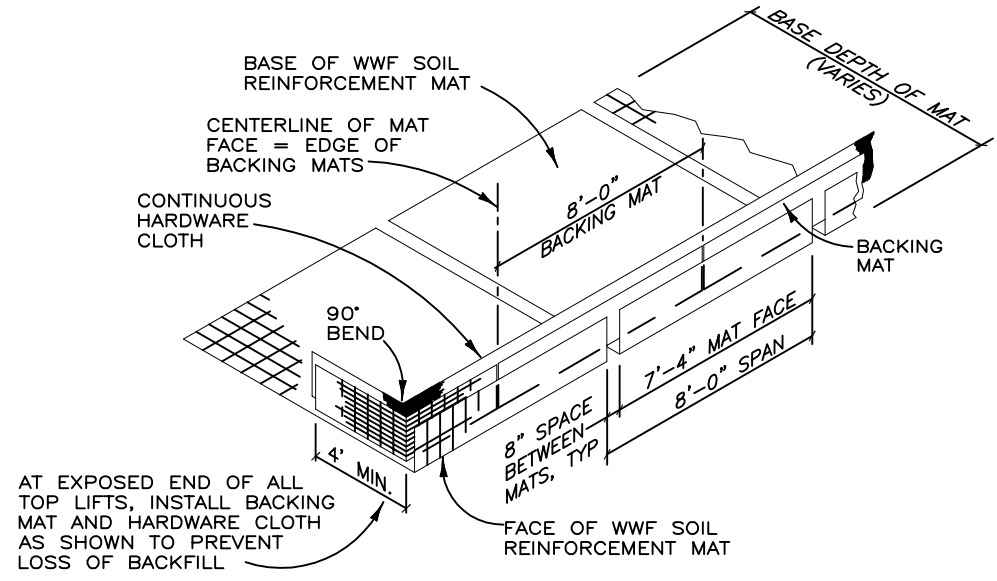


EL DORADO COUNTY
 DEPARTMENT OF TRANSPORTATION

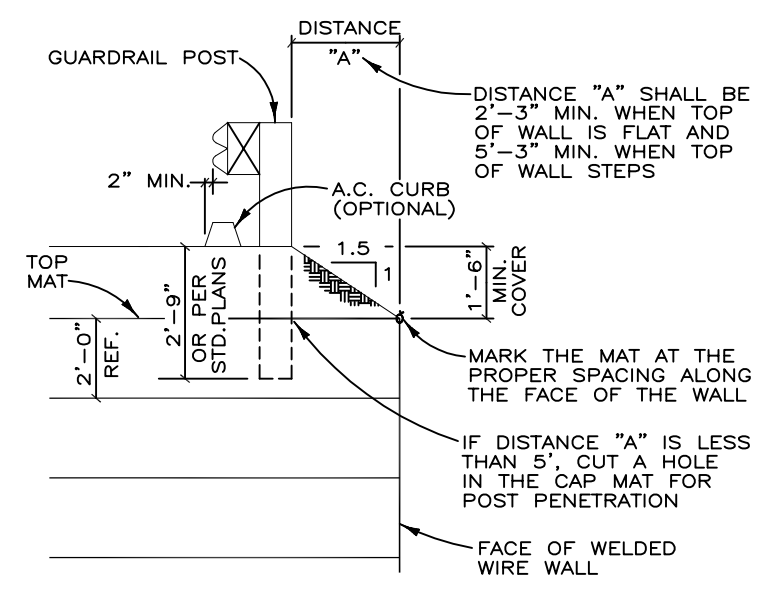
WHITE MEADOWS ROAD
 SLIPOUT REPAIR

SHEET
R-2
 12 OF 13
 W.O. No. **78669**

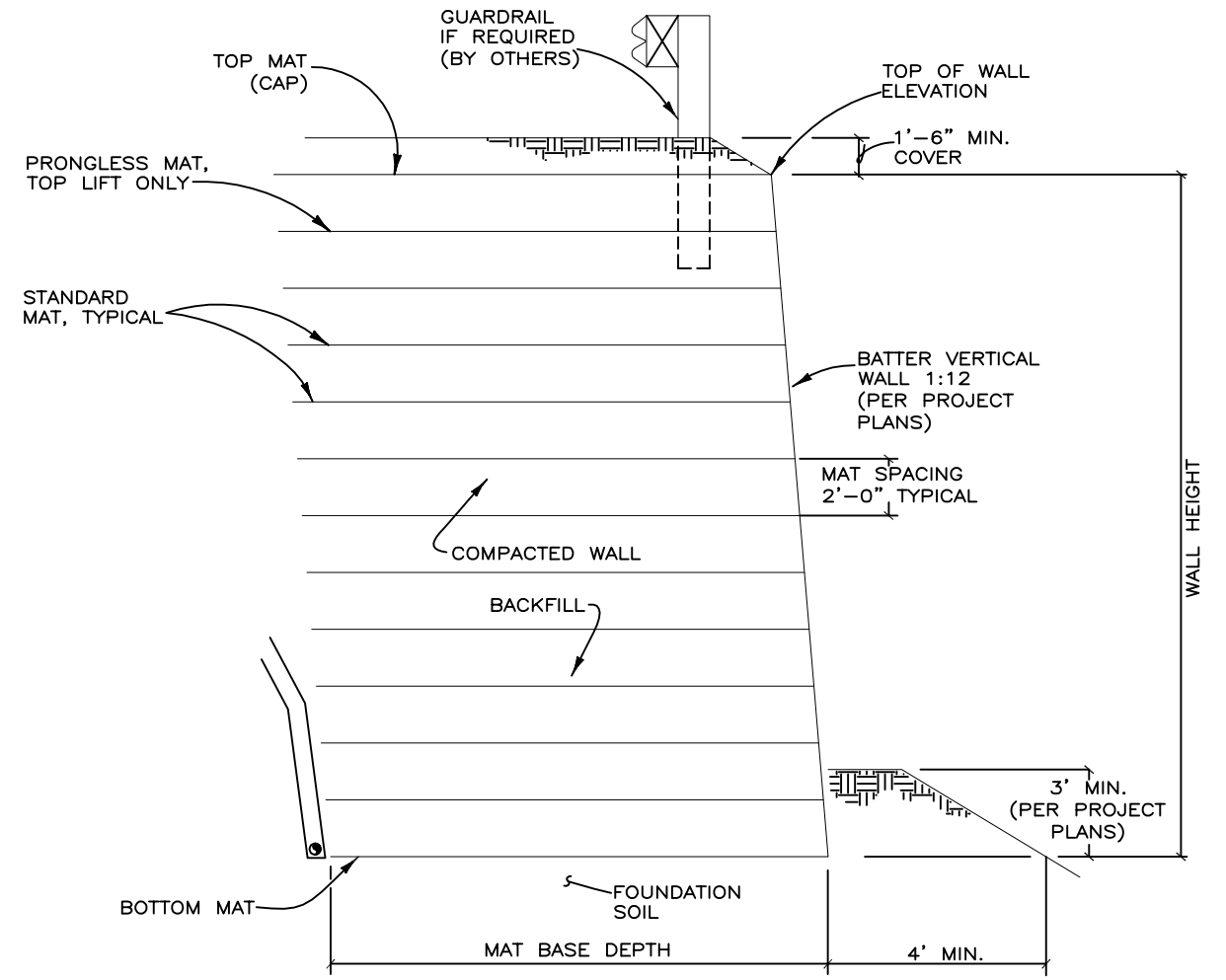
Drawing name: C:\Civil 3D Projects\78669 White Meadows Slipout\Drawings\Sheets\RW Plans.dwg Layout Tab: R-3 Aug 02,2007 - 2:15pm ABishop



ISOMETRIC VIEW
WELDED WIRE WALL COMPONENTS WITH RETURN MAT
 NOT TO SCALE



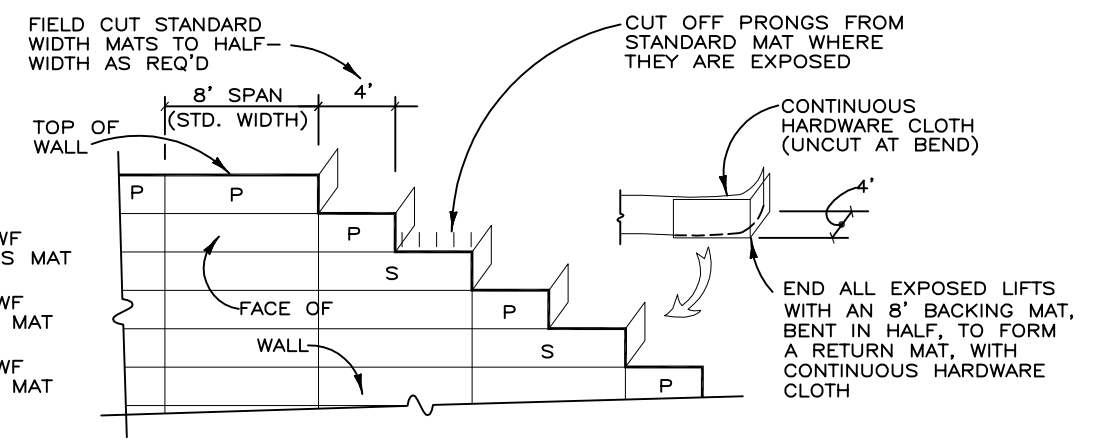
SECTION
GUARDRAIL DETAIL
 NOT TO SCALE
 (FENCE DETAIL SIMILAR)



TYPICAL SECTION
 3"=20'

LEGEND
 (THIS DETAIL ONLY)

- P 8"x12" WWF PRONGLESS MAT
- S 8"x12" WWF STANDARD MAT
- 8"x21" WWF STANDARD MAT



RETURN MATS AND TOP OF WALL DETAIL
 NOT TO SCALE

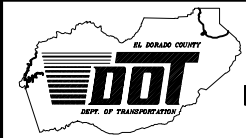
PRELIMINARY 90%

COLLINS ENGINEERS
 259 Nevada Street
 Suite 100
 Auburn, CA 95603
 Tele. (530) 887-8151
 Fax (530) 887-0911
 www.collinsengr.com

M.S.E. RETAINING WALL
SCALE : AS SHOWN

REVISION	NUMBER	DATE	DESCRIPTION	BY

PREPARED UNDER THE SUPERVISION OF :	DESIGNED: TAJ	DRAWN: KPC
REGISTERED CIVIL ENGINEER	CHECKED: SKP/ORM	DATE: 08/01/07
DATE:	ROAD NUMBER: 1041	



EL DORADO COUNTY
DEPARTMENT OF TRANSPORTATION

WHITE MEADOWS ROAD
SLIPOUT REPAIR

SHEET
R-3
 13 OF 13
 W.O. No. **78669**