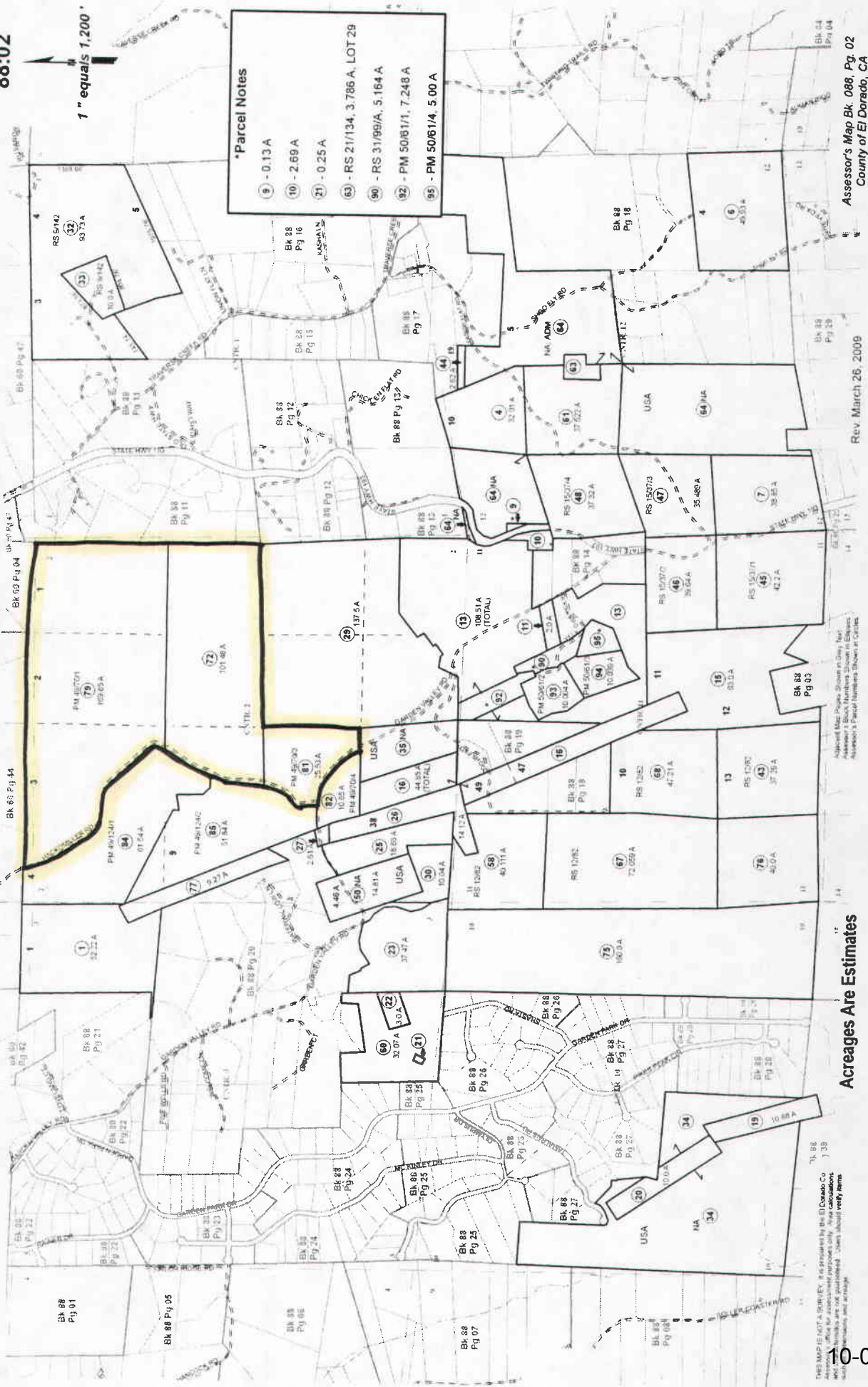


SECS. 1, 2, 3, 10, 11, & 12, T.11N., R.10E., M.D.M.

88:02

1" equals 1,200'

- \*Parcel Notes**
- 9 - 0.13 A
  - 10 - 2.69 A
  - 21 - 0.25 A
  - 63 - RS 21/134, 3.786 A, LOT 29
  - 90 - RS 31/99/A, 5.164 A
  - 92 - PM 50/61/1, 7.248 A
  - 95 - PM 50/61/4, 5.00 A



Assessor's Map BK. 088, Pg. 02  
County of El Dorado, CA

Rev. March 26, 2009

All parcel maps shown in this map  
Assessor's Block Numbers Shown in Boxes  
Assessor's Parcel Numbers Shown in Circles

Acreages Are Estimates

THIS MAP IS NOT A SURVEY. It is prepared by the El Dorado Co  
Assessor's Office for assessment purposes only. Area calculations  
are based on the best available information. Users should verify maps  
and acreages with a survey.

EXHIBIT A