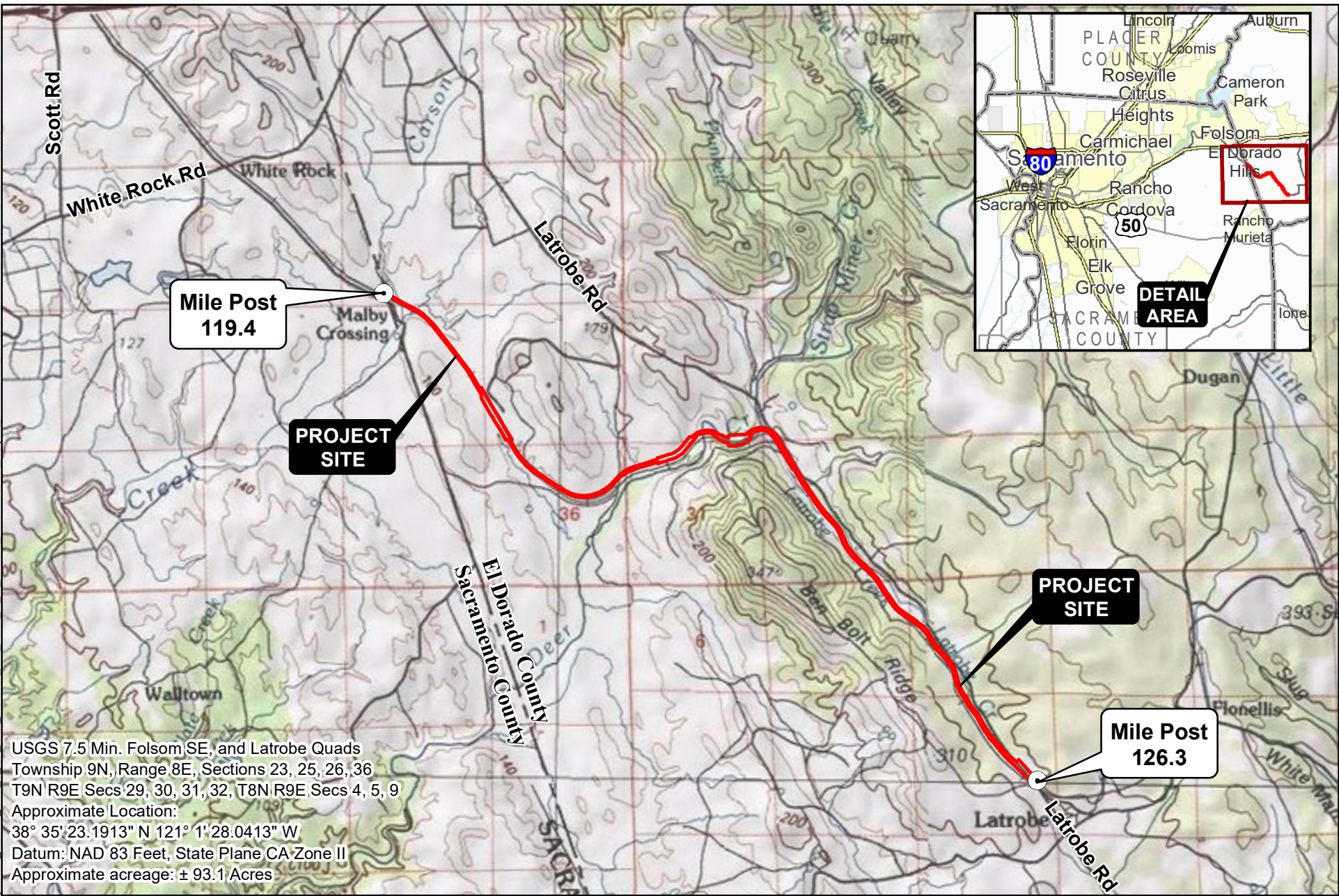


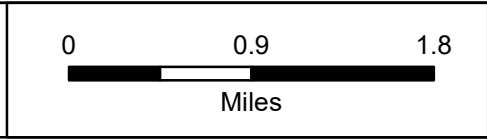
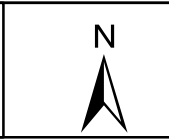
Document Path: O:\N. Cal\Projects\El Dorado Trail & OC from Missouri Flat Road to El Dorado Road\GIS\GIS Project Files\SPTC_JPA_SnV_CoLine_LatrobeRd_20160928.mxd



USGS 7.5 Min. Folsom SE, and Latrobe Quads
 Township 9N, Range 8E, Sections 23, 25, 26, 36
 T9N R9E Secs 29, 30, 31, 32, T8N R9E Secs 4, 5, 9
 Approximate Location:
 $38^{\circ} 35' 23.1913'' N 121^{\circ} 1' 28.0413'' W$
 Datum: NAD 83 Feet, State Plane CA Zone II
 Approximate acreage: ± 93.1 Acres

SITE AND VICINITY

FOOTHILL ASSOCIATES
 ENVIRONMENTAL CONSULTING • PLANNING • LANDSCAPE ARCHITECTURE
 © 2016



Drawn By: MUB
 Date: 09/28/2016

FIGURE 1
 16-0983_F_Page 1 of 1