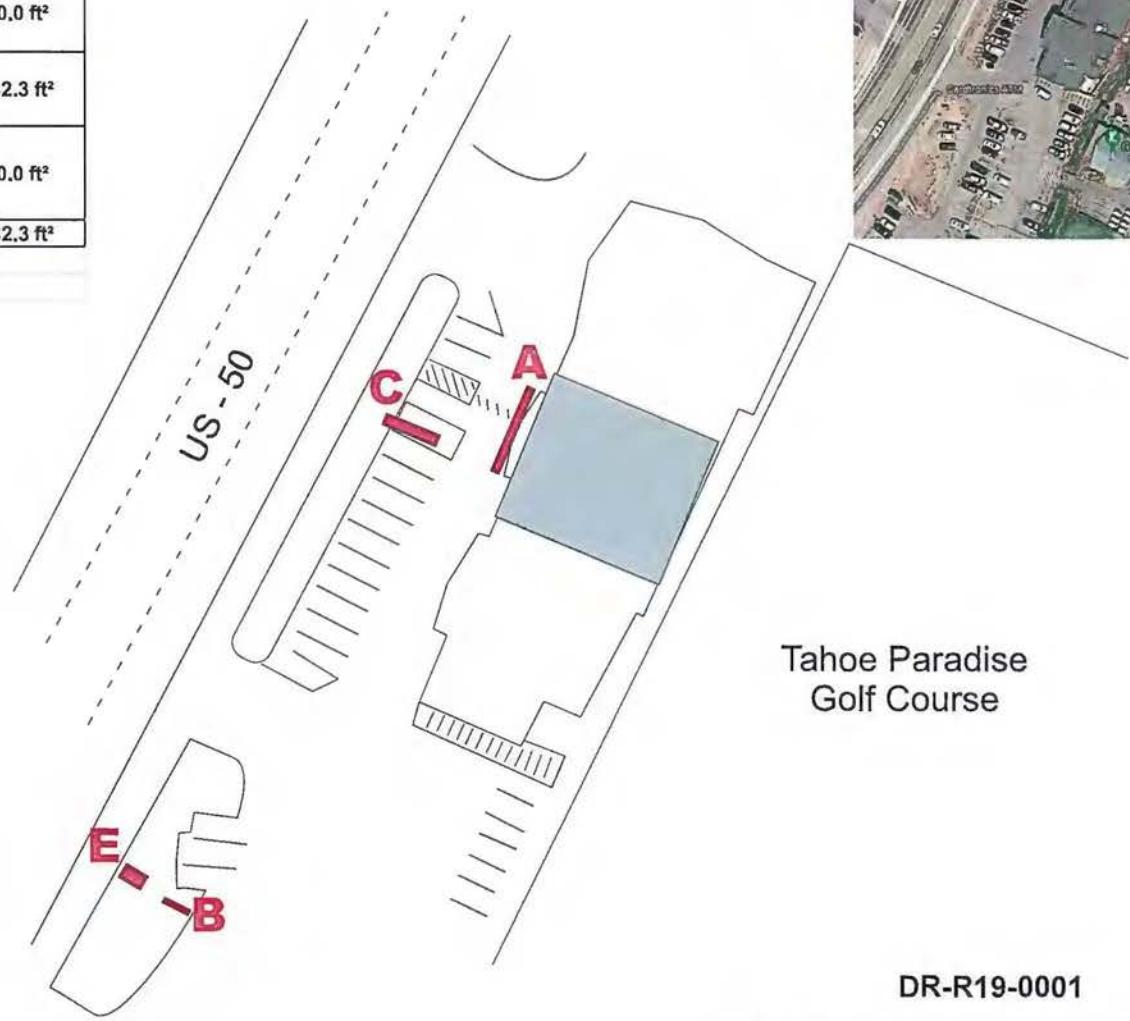


SIGN	DESCRIPTION	PROPOSED
A	Raceway mounted face lit channel letters	40.0 ft ²
B	Remove Pole sign to grade.	0.0 ft ²
C	Reface existing double faced monument sign.	42.3 ft ²
E	Wood Hut/Electrical Pump House - no changes	0.0 ft ²
TOTALS		82.3 ft²



**3707 ELECTRO WAY
REDDING, CA 96002
(530) 223-2030
FAX (530) 223-2060**
mchalesign.com

OWNERSHIP OF THIS DESIGN IS HELD BY McHALE SIGN INC. THIS DESIGN IS FOR PERSONAL USE, AND IS NOT TO BE SHOWN OUTSIDE YOUR ORGANIZATION, NOR IS TO BE COPIED, REPRODUCED, OR EXHIBITED IN ANY MANNER.

HOLIDAY
2977 US-50
South Lake Tahoe, CA

APPROVED BY: _____
DATE: _____

SCALE: 3/4" = 1'

THIS SIGN IS INTENDED TO BE INSTALLED IN ACCORDANCE WITH THE REQUIREMENTS OF ARTICLE 600 OF THE NATIONAL ELECTRICAL CODE INCLUDING PROPER GROUNDING AND BONDING OF THE SIGN
(A thorough site survey is required to obtain exact sizes for correct install. Clear and unobstructed access required behind wall for remote wiring but adequate blocking behind wall required for support. Primary 120 volt electric feed done by others.)

APPROVED
EL DORADO COUNTY
PLANNING COMMISSION
DATE February 13, 2020
BY Tiffany Schmid/dra
EXECUTIVE SECRETARY

Tahoe Paradise
Golf Course

DR-R19-0001
Exhibit F - Preliminary Site Plan

A

122"
from grade
to bottom of sign



APPROVED
EL DORADO COUNTY
PLANNING COMMISSION

DATE February 13, 2020

BY Tiffany Schmid/dre
EXECUTIVE SECRETARY



DR-R19-0001

Exhibit G - Proposed Elevation, Holiday Entrance Wall Sign (A)

A

Raceway mounted face lit channel letters
5" deep aluminum return, .177 acrylic faces, 1" black trim cap,
first surface vinyl, 3M White Diffuser Film 3635-70 (60% light transmission), 3M 3630-76 green, & 3M 3630-53 red
white led illumination, letters mounted to 5" aluminum raceway. 40 SqFt.



3707 ELECTRO WAY
REDDING, CA 96002
(530) 223-2030
FAX (530) 223-2060
mchalesign.com

OWNERSHIP OF THIS
DESIGN IS HELD BY
McHALE SIGN INC. THIS
DESIGN IS FOR
PERSONAL USE, AND IS
NOT TO BE SHOWN
OUTSIDE YOUR ORGAN-
IZATION, NOR IS TO BE
COPIED, REPRODUCED,
OR EXHIBITED IN ANY
MANNER.

HOLIDAY
2977 US-50
South Lake Tahoe, CA

APPROVED BY:

DATE:

SCALE: 3/4" = 1'

THIS SIGN IS INTENDED TO
BE INSTALLED IN
ACCORDANCE WITH THE
REQUIREMENTS OF
ARTICLE 600 OF THE
NATIONAL ELECTRICAL
CODE INCLUDING PROPER
GROUNDING AND BONDING
OF THE SIGN

(A thorough site survey is
required to obtain exact
sizes for correct install. Clear
and unobstructed access
required behind wall for remote
wiring but adequate blocking
behind wall required for
support. Primary 120 volt
electric feed done by others.)

2-5-19

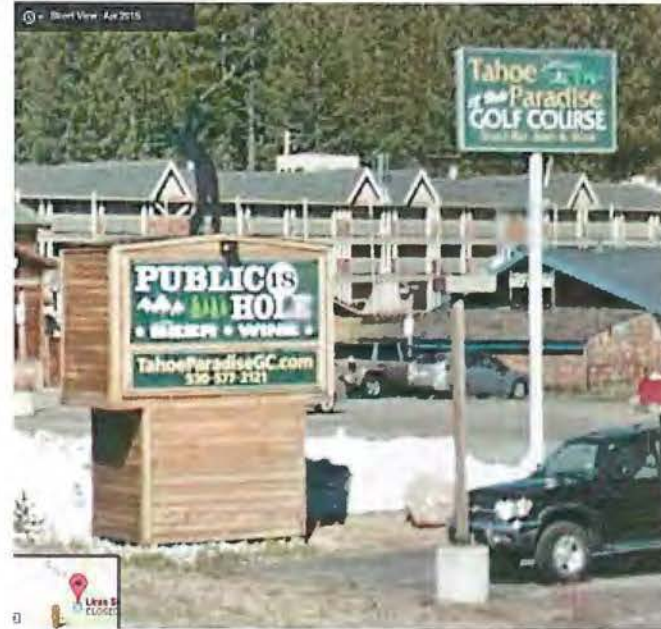
B



Existing

Remove pole sign to grade.

E



Wood Hut/Electrical Pump House
Leave as is.

APPROVED
EL DORADO COUNTY
PLANNING COMMISSION

DATE February 13, 2020

BY Tiffany Schmid/dre
EXECUTIVE SECRETARY

DR-R19-0001

Exhibit H - Proposed Elevation, Tahoe Paradise Golf Monument Sign (B,E)



3707 ELECTRO WAY
REDDING, CA 96002
(530) 223-2030
FAX (530) 223-2060
mchalesign.com

OWNERSHIP OF THIS DESIGN IS HELD BY McHALE SIGN INC. THIS DESIGN IS FOR PERSONAL USE, AND IS NOT TO BE SHOWN OUTSIDE YOUR ORGANIZATION, NOR IS TO BE COPIED, REPRODUCED, OR EXHIBITED IN ANY MANNER.

HOLIDAY
2977 US-50
South Lake Tahoe, CA

APPROVED BY:

DATE:

SCALE: 3/4" = 1'

THIS SIGN IS INTENDED TO BE INSTALLED IN ACCORDANCE WITH THE REQUIREMENTS OF ARTICLE 600 OF THE NATIONAL ELECTRICAL CODE INCLUDING PROPER GROUNDING AND BONDING OF THE SIGN

(A thorough site survey is required to obtain exact sizes for correct install. Clear and unobstructed access required behind wall for remote wiring but adequate blocking behind wall required for support. Primary 120 volt electric feed done by others.)

2-5-19

C



Existing



Proposed



Reface existing double faced monument sign
 New faces in sandblasted red cedar
 Graphics painted in 3 colors
 (Green PMS 7734, Red PMS 187, White)

63 3/8" h x 96" w 42.25sf

DR-R19-0001

Exhibit I - Proposed Elevation, Holiday Monument Sign (C)



3707 ELECTRO WAY
 REDDING, CA 96002
 (530) 223-2030
 FAX (530) 223-2060
 mchalesign.com

OWNERSHIP OF THIS DESIGN IS HELD BY McHALE SIGN INC. THIS DESIGN IS FOR PERSONAL USE, AND IS NOT TO BE SHOWN OUTSIDE YOUR ORGANIZATION, NOR IS TO BE COPIED, REPRODUCED, OR EXHIBITED IN ANY MANNER.

HOLIDAY
 2977 US-50
 South Lake Tahoe, CA

APPROVED BY:

DATE:

SCALE: 3/4" = 1'

APPROVED
 EL DORADO COUNTY
 PLANNING COMMISSION

DATE February 13, 2020

BY Tiffany Schmidt
 EXECUTIVE SECRETARY

THIS SIGN IS INTENDED TO BE INSTALLED IN ACCORDANCE WITH THE REQUIREMENTS OF ARTICLE 600 OF THE NATIONAL ELECTRICAL CODE INCLUDING PROPER GROUNDING AND BONDING OF THE SIGN

(A thorough site survey is required to obtain exact sizes for correct install. Clear and unobstructed access required behind wall for remote wiring but adequate blocking behind wall required for support. Primary 120 volt electric feed done by others.)

2-5-19