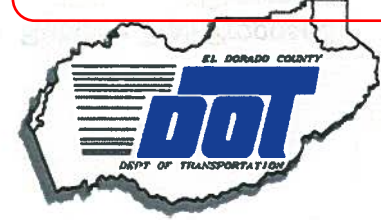


RECEIVED  
BOARD OF SUPERVISORS  
EL DORADO COUNTY  
4:50 pm, Oct 15, 2010



# 3

**LATE DISTRIBUTION**  
Date 4:50 pm, Oct 15, 2010



# Rubicon Trail Location Recognition Phase 2

Department of Transportation  
Prepared for the Board of Supervisors  
October 19, 2010  
Legistar Item #10-1118



10-1118 C1

## ***Agenda***

- Rubicon Trail Location Recognition Phase 2 Goal and Objectives
- Background
- Rubicon Trail Location Recognition Easement Exhibits
- Rubicon Trail Location Maps
- Questions

## ***Rubicon Trail Location Recognition Phase 2 Goal and Objectives***

### **Goal:**

To select a preferred Rubicon Trail route location explicitly required within the Clean-up and Abatement Order (CAO).

The CAO specifically requires: “Documentation of the actual location of the Rubicon Trail within El Dorado County, including the centerline and an agreed-upon width from each side of that line. The documentation shall be in a form that shall be easily understood by both the public and law enforcement officials.”

### **Objectives:**

1. Finalize the Rubicon Trail CL Location and Proposed Easement Locations
2. After Board Approval, initiate the Easement Process
  - a. Complete the Proposed Easement documents and application to USFS for agreed-upon Easement's widths
  - b. Begin the Easement discussions with the Private landowners for agreed-upon Easement's widths

## ***Background:***

- April, 2009 - Clean-up and Abatement Order (“CAO”) No.R5-2009-0030 issued which required El Dorado County and the El Dorado National Forest, United States Forest Service (“USFS”) to cleanup and abate the impacts resulting from OHV use on the Rubicon Trail
- July, 2009 - California Geologic Survey (“CGS”) Report issued to County which depicted a trail centerline and variants with water quality problems and potential Best Management Practices (“BMP’s”) solutions
- May-October, 2009 - DOT completed several field surveys to locate and calibrate the trail location with variants using the CGS Trail Map and County Trail Map
- October – December, 2009 Completed 2 ROC meetings and several stakeholder meetings to discuss the options and develop the Rubicon Trail Location Map
- January 26, 2010 – Board Meeting to select the preferred Rubicon Trail Route Option, Option 2a was selected (“a” involved adjustments to the Board option 2) (Exhibit B).
- February-July 2010 – DOT worked on and received various OHV Grants from State Parks.
- July – October 2010 – DOT implemented the 2010 Operations and Maintenance Plan for the Phase 1 Ground Operations BMP work, initiated the various design and survey work related to the BMP’s and Saturated Soils and Water Quality Protection Plan, and initiated the Rubicon Trail CL surveys and mapping.

# Rubicon Trail Proposed Easement Map

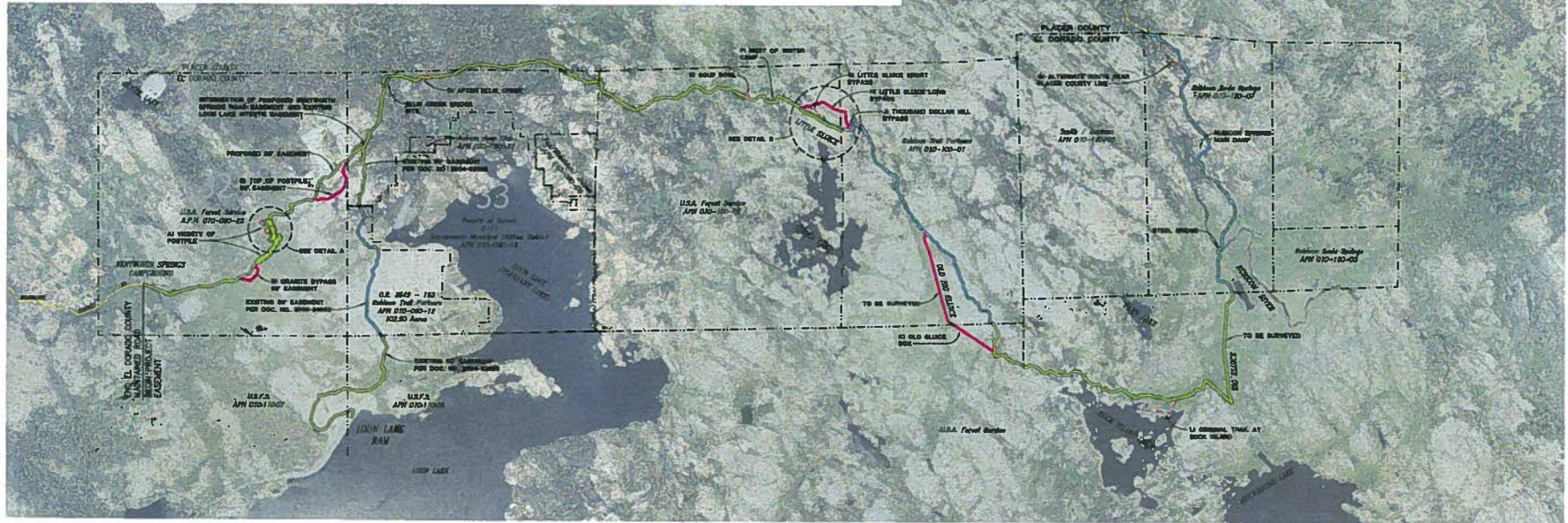
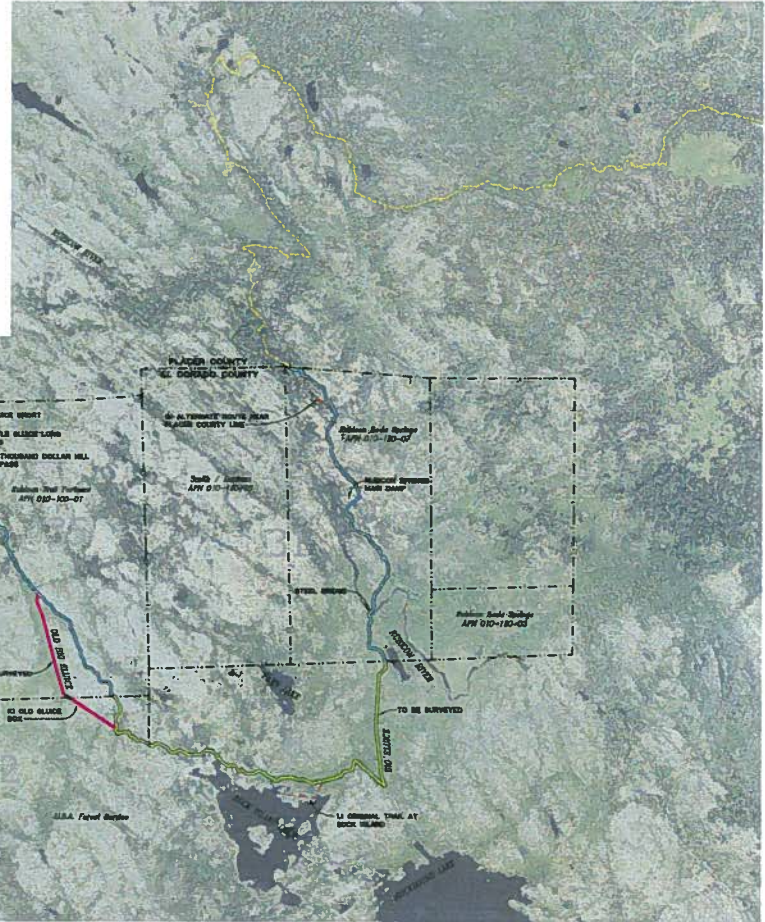
## Exhibit A



DETAIL A  
(VICINITY OF POSTPILE)  
SCALE 1"=100'



DETAIL B  
(VICINITY LITTLE SLUICE)  
SCALE 1"=100'



- LEGEND:
- FOREST SERVICE EASEMENT, NOT WORK UNLESS OTHERWISE NOTED
  - PRIVATE EASEMENT, WORK TO BE DETERMINED UNLESS NOTED
  - VARIATION

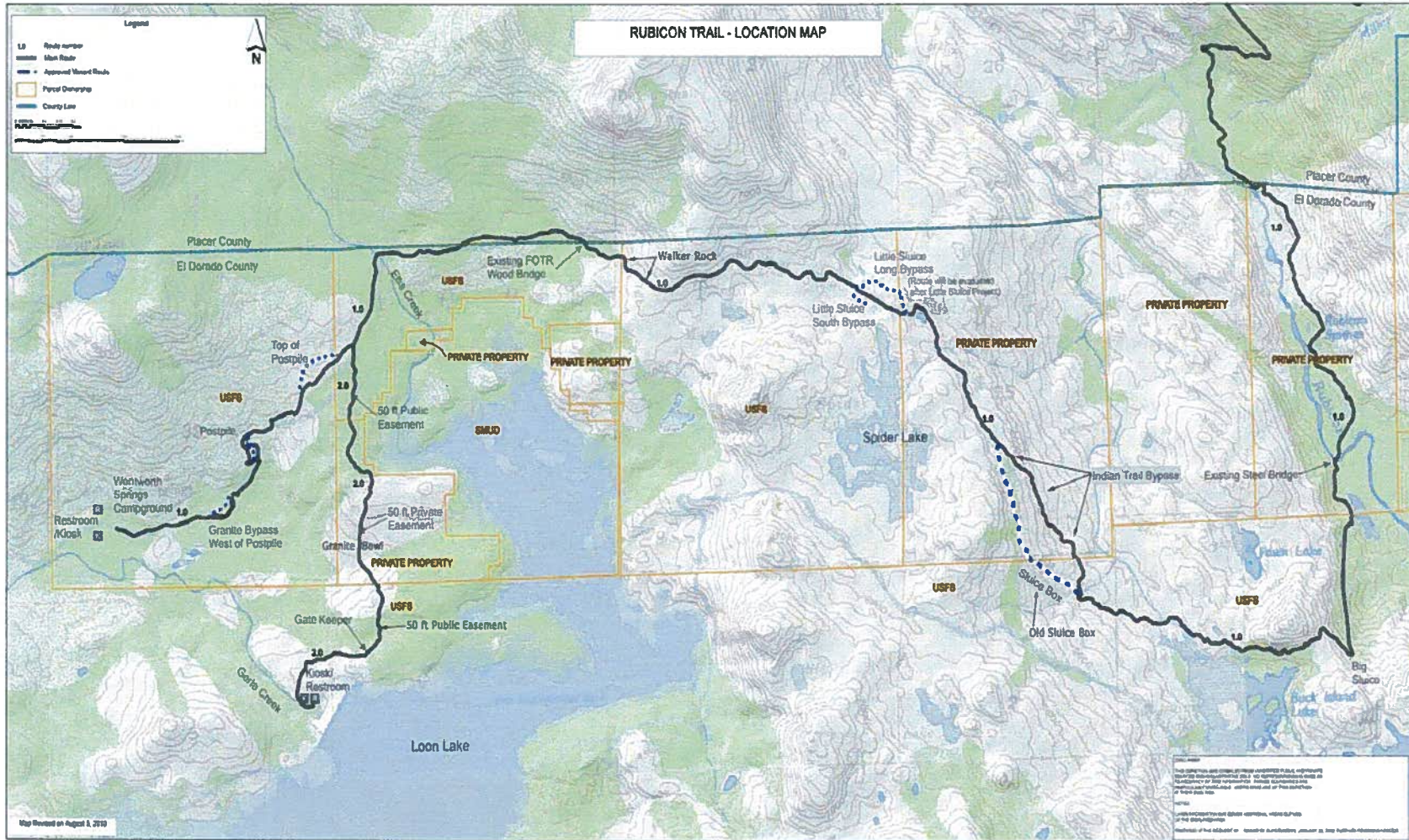
PRELIMINARY SCALE 1"=100'

	EL DORADO COUNTY DEPARTMENT OF TRANSPORTATION	PRELIMINARY RUBICON TRAIL PROPOSED EASEMENT EXHIBIT
--	--	---

October 19, 2010

# Rubicon Trail Location BOS Approved Map

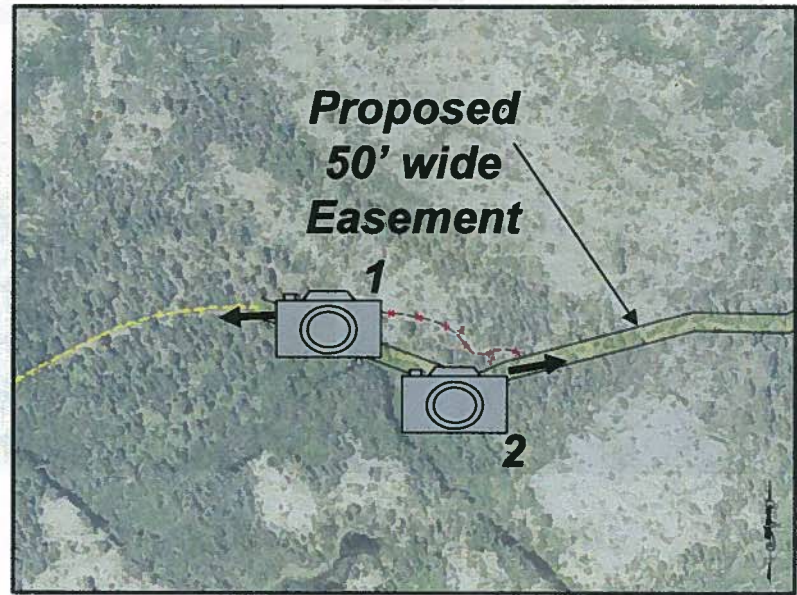
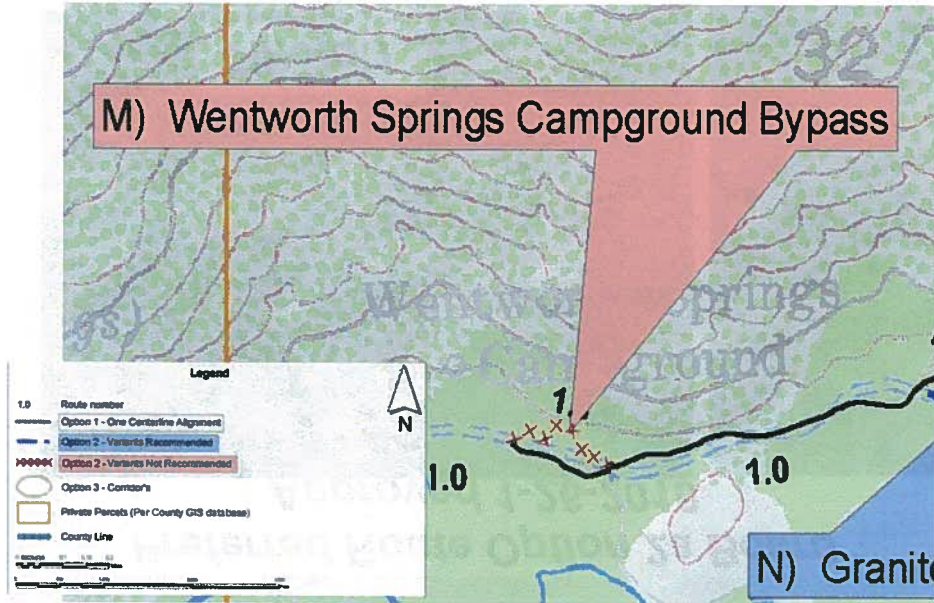
## Exhibit B



October 19, 2010

DOT Rubicon Trail Proposed Easement

# Rubicon Trail Location Map (M)



**Preferred Route Option 2a Board  
Approved 1-26-2010**

**Proposed Easement**



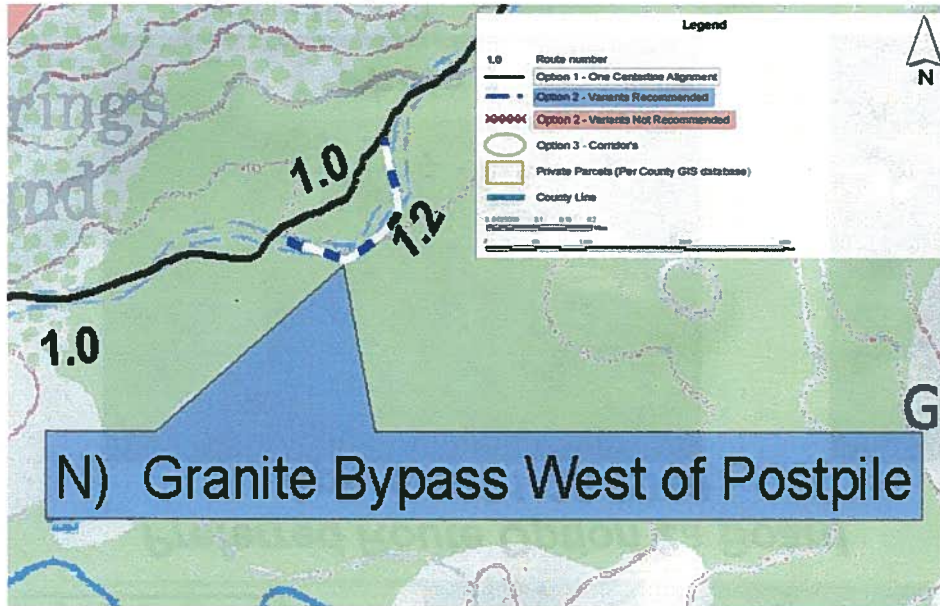
October 19, 2010



7

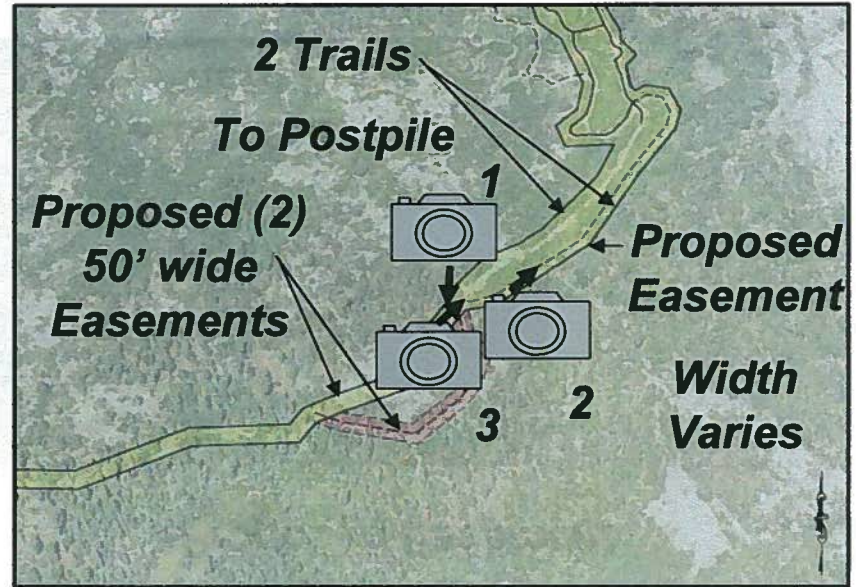
DOT Rubicon Trail Proposed Easement

# Rubicon Trail Location Map (N)



N) Granite Bypass West of Postpile

**Preferred Route Option 2a Board  
Approved 1-26-2010**



**Proposed Easement**



**Photo 1**

October 19, 2010



**Photo 2**

8

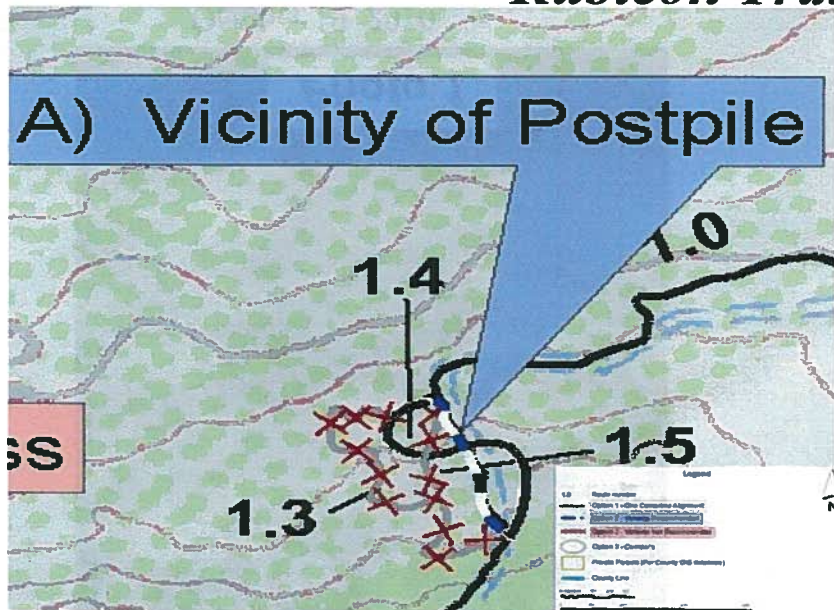


**Photo 3**

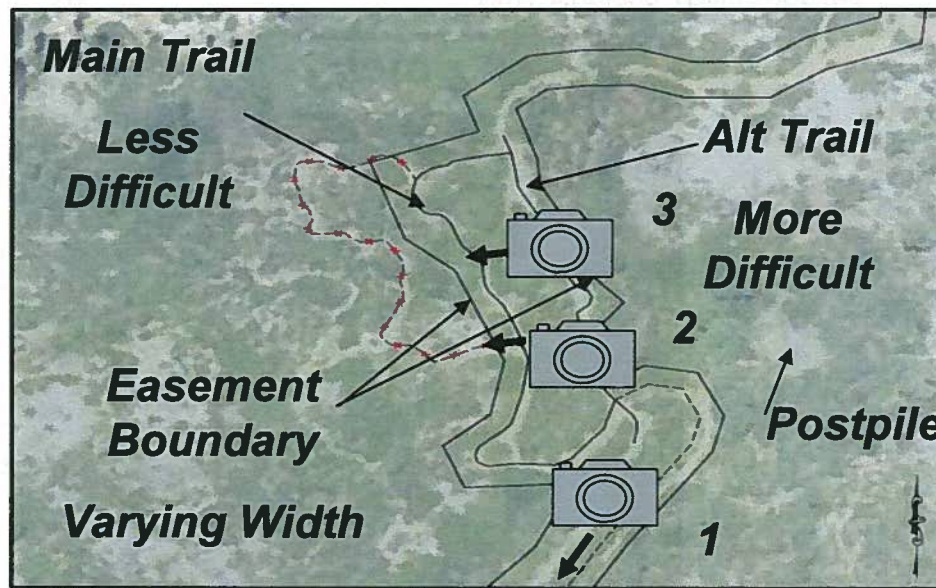
DOT Rubicon Trail Proposed  
Easement



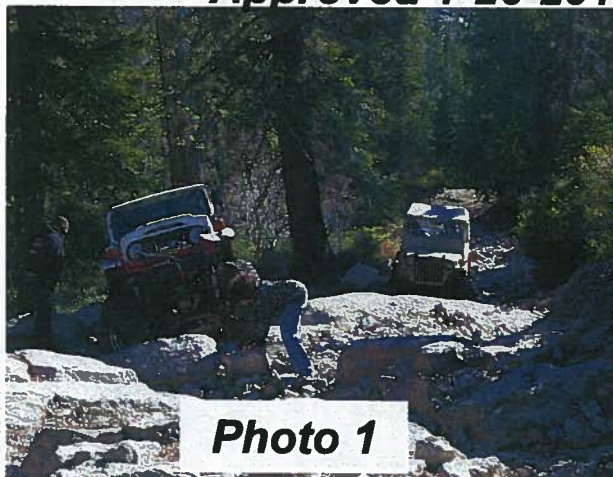
# Rubicon Trail Location Map (A)



**Preferred Route Option 2a Board  
Approved 1-26-2010**



**Proposed Easement**



October 19, 2010

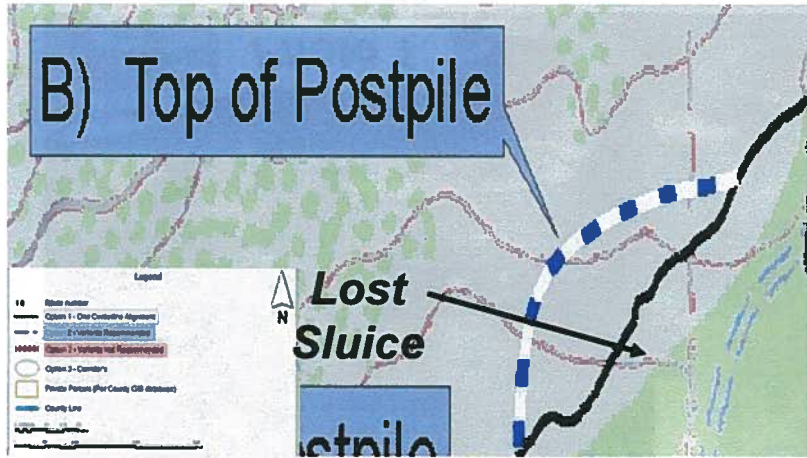


9

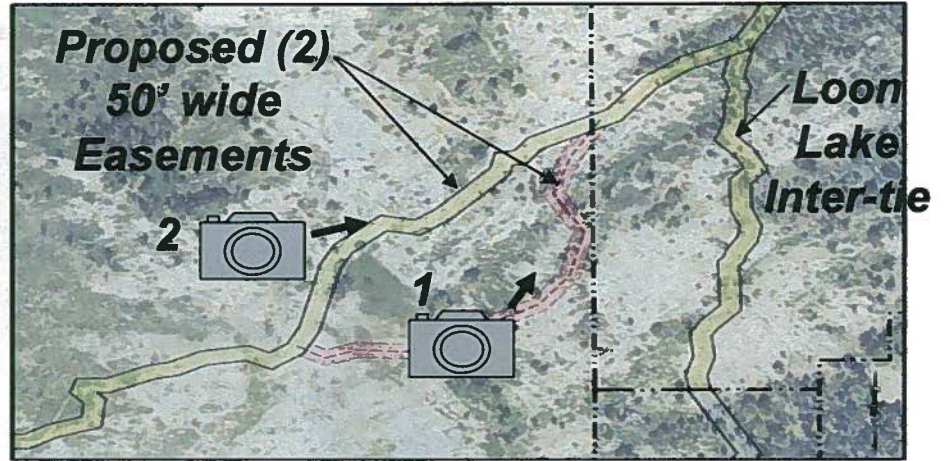


DOT Rubicon Trail Proposed Easement

## Rubicon Trail Location Map (B)



**Preferred Route Option 2a Board Approved 1-26-2010**



**Proposed Easement**



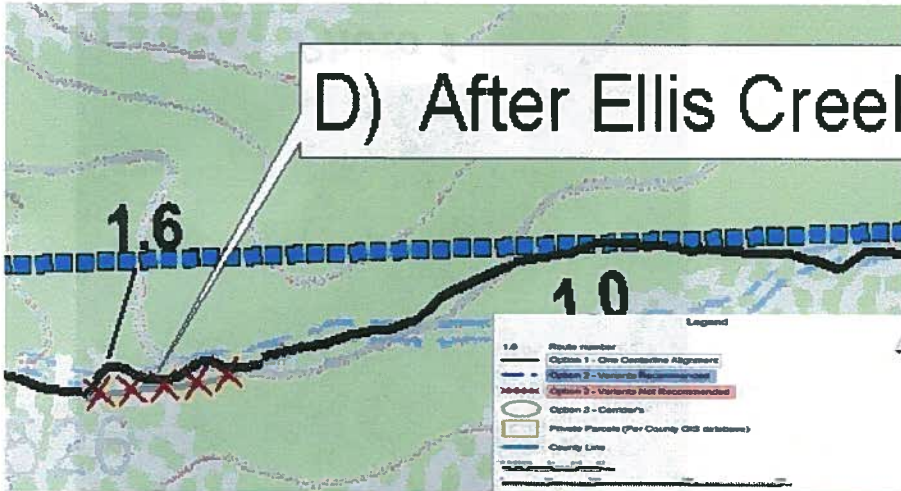
**Photo 1**  
October 19, 2010



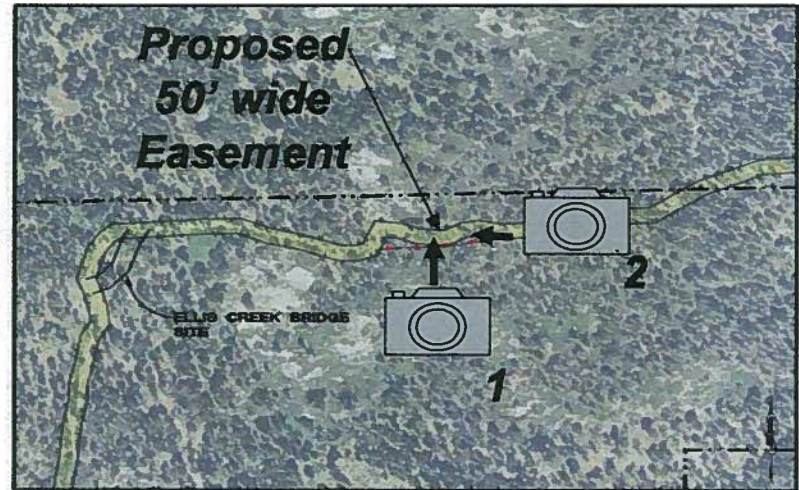
**Photo 2**  
10

**DOT Rubicon Trail Proposed Easement**

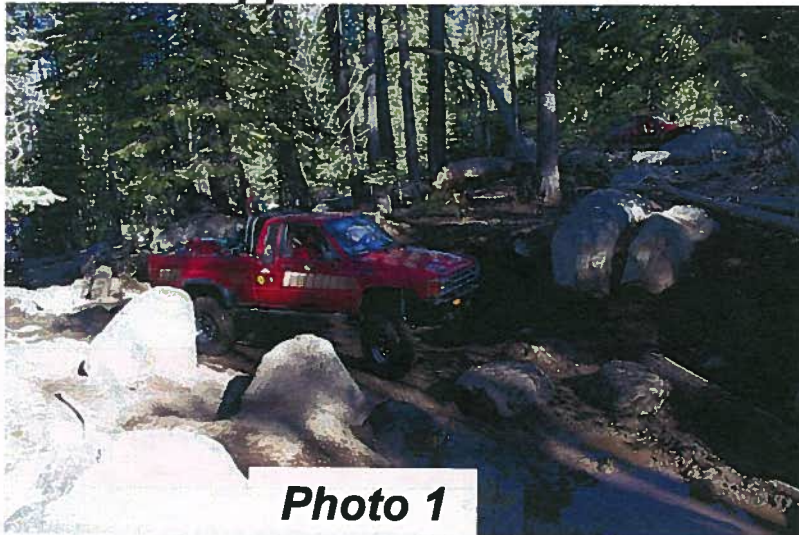
# Rubicon Trail Location Map (D)



**Preferred Route Option 2a Board Approved 1-26-2010**



**Proposed Easement**

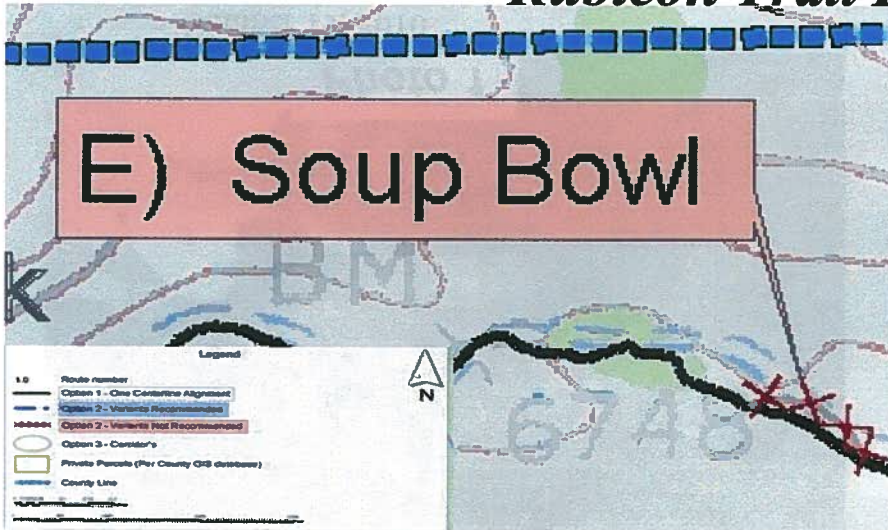


October 19, 2010

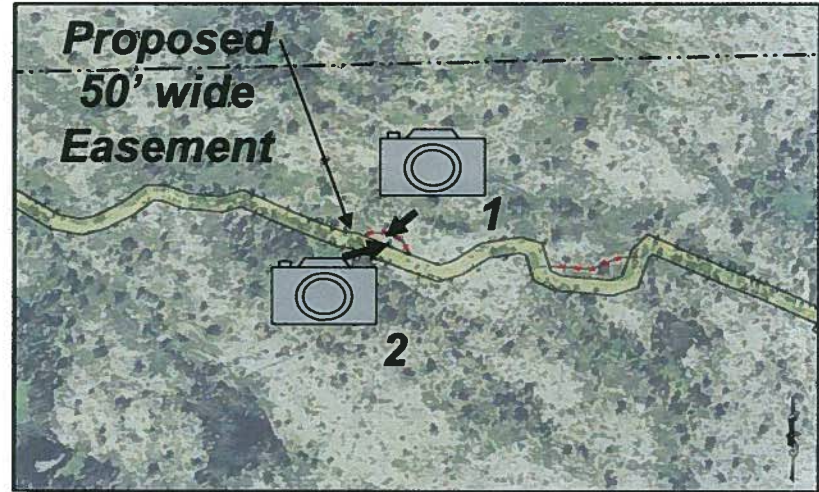


DOT Rubicon Trail Proposed Easement

# Rubicon Trail Location Map (E)



**Preferred Route Option 2a Board Approved 1-26-2010**



**Proposed Easement**

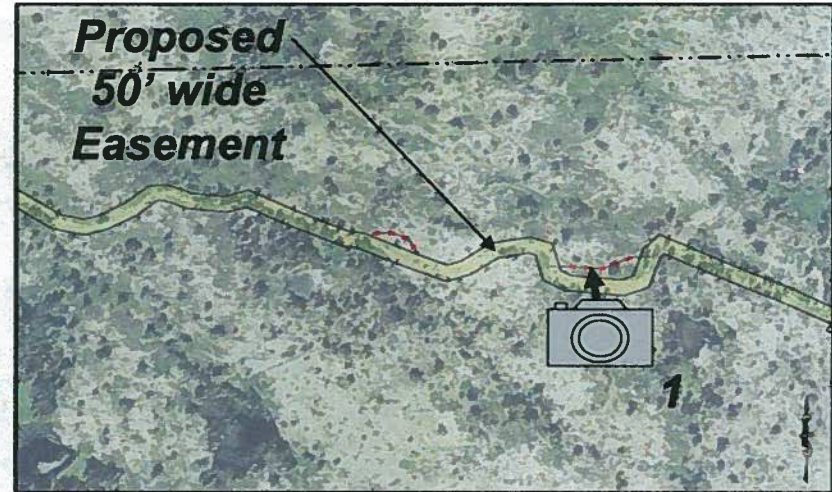
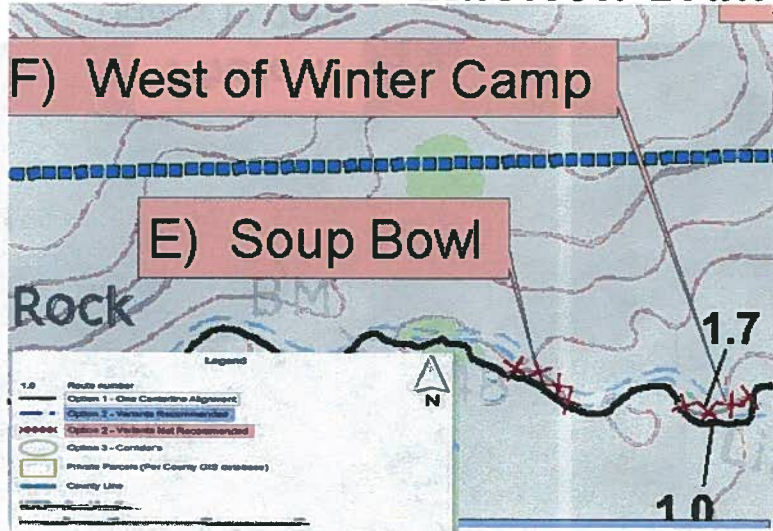


October 19, 2010



DOT Rubicon Trail Proposed Easement

# Rubicon Trail Location Map (F)



**Preferred Route Option 2a Board  
Approved 1-26-2010**

**Proposed Easement**

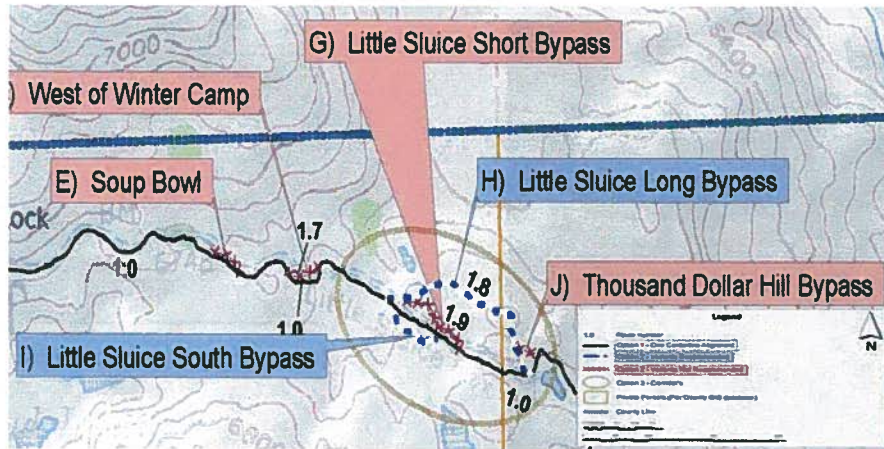


October 19, 2010

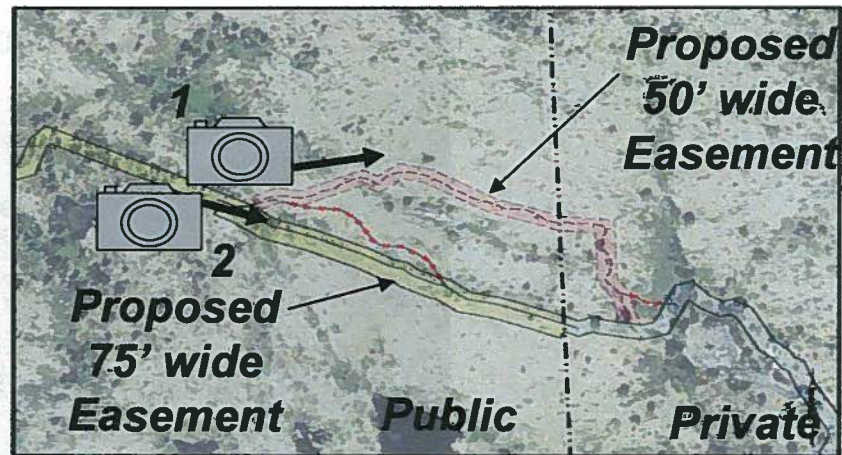
13

DOT Rubicon Trail Proposed Easement

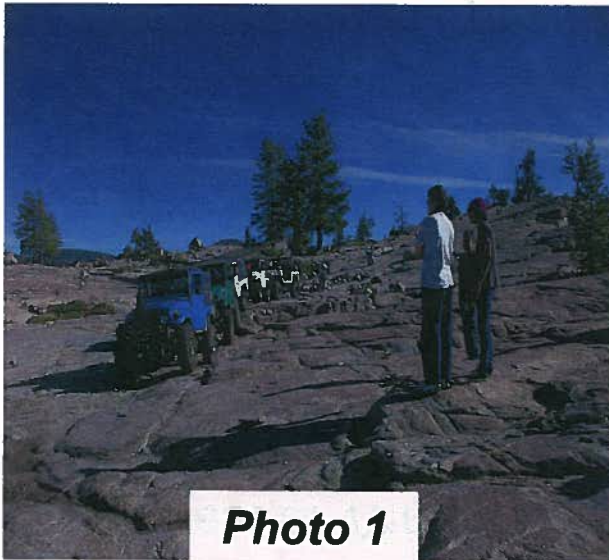
## *Rubicon Trail Location Map (G-J)*



**Preferred Route Option 2a Board  
Approved 1-26-2010**



**Proposed Easement**

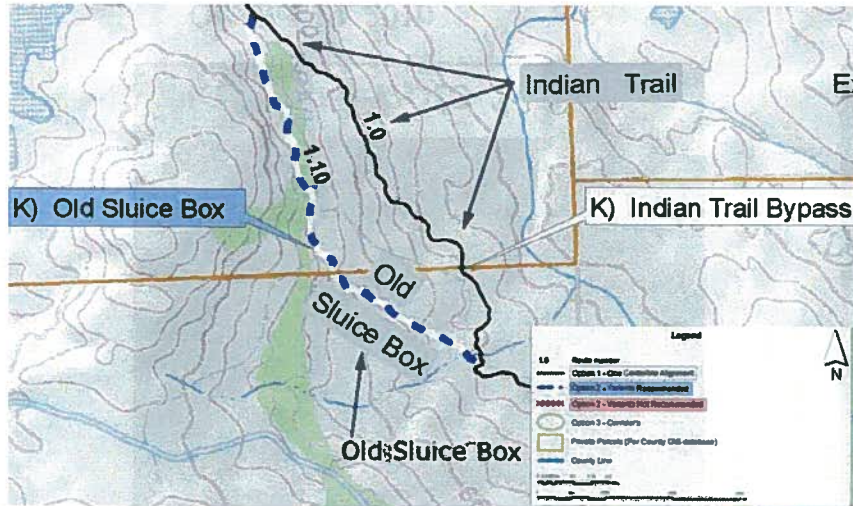


**Photo 1**  
October 19, 2010

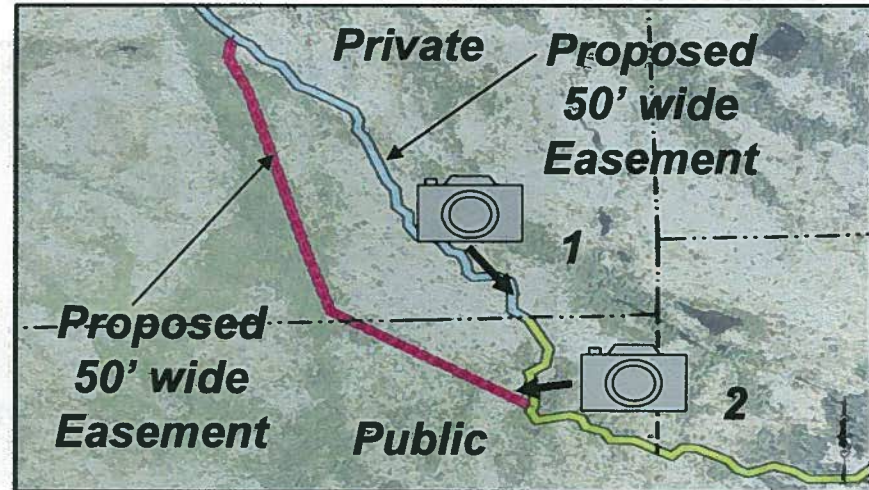


**Photo 2**

# Rubicon Trail Location Map (K)



**Preferred Route Option 2a Board  
Approved 1-26-2010**

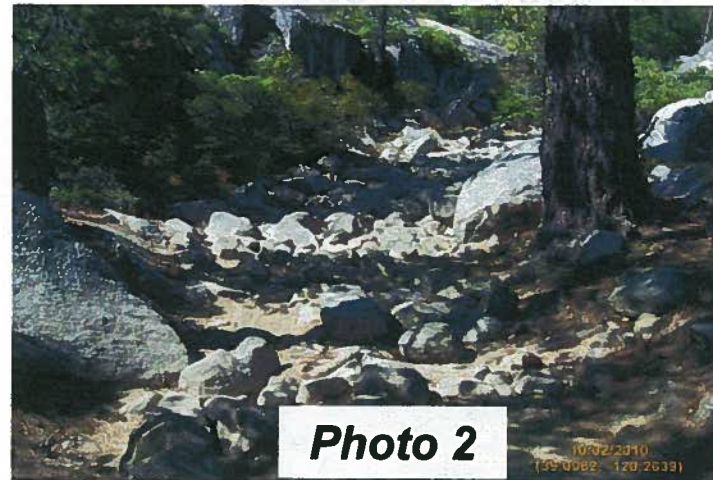


**Proposed Easement**



**Photo 1**

October 19, 2010

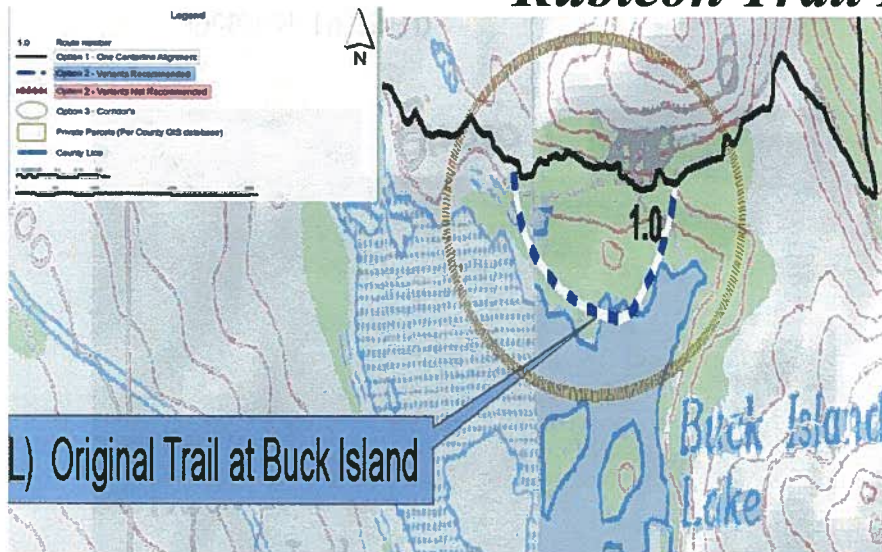


**Photo 2**

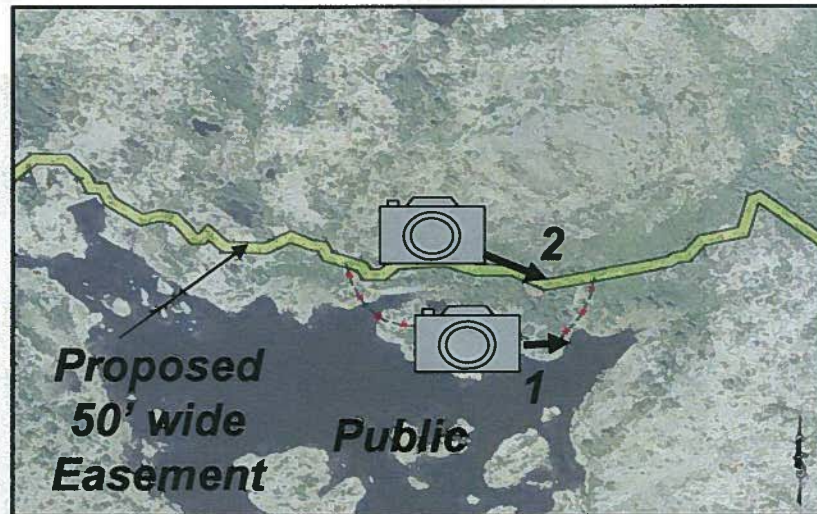
15

DOT Rubicon Trail Proposed Easement

# Rubicon Trail Location Map (L)



**Preferred Route Option 2a Board Approved 1-26-2010**



**Proposed Easement**



**Photo 1**

October 19, 2010



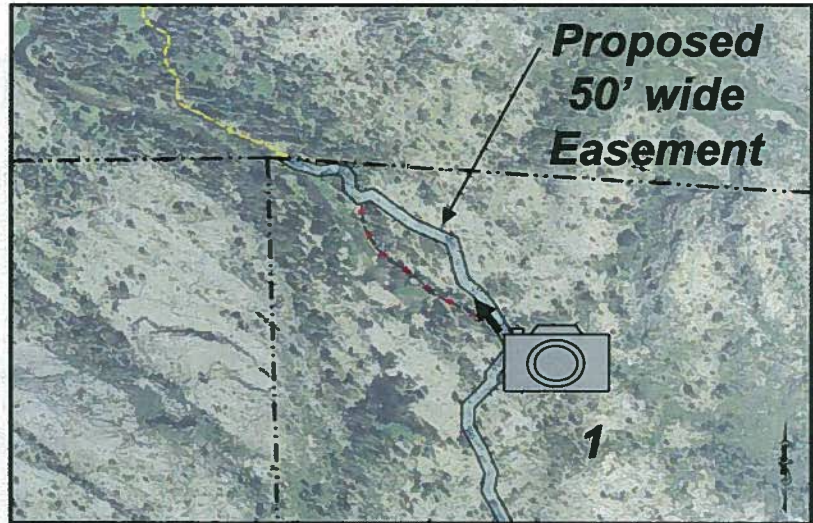
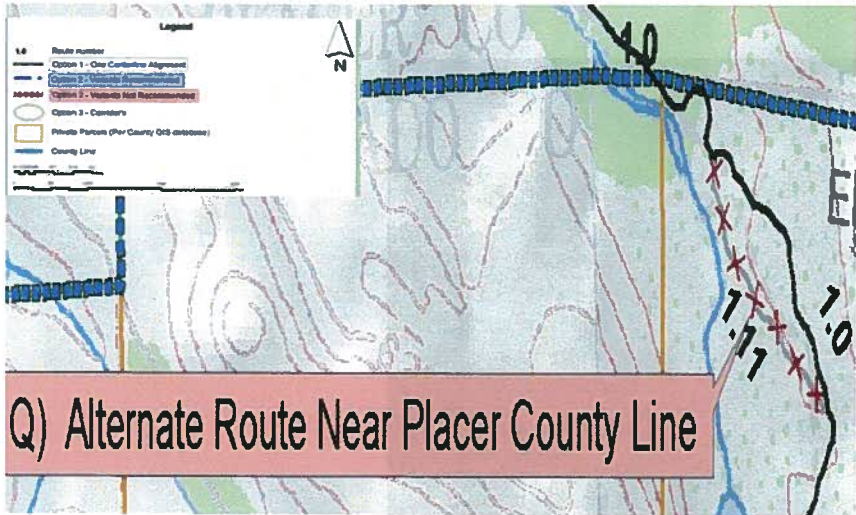
**Photo 2**

16

DOT Rubicon Trail Proposed Easement



# Rubicon Trail Location Map (O)



**Preferred Route Option 2a Board Approved 1-26-2010**

**Proposed Easement**



October 19, 2010

17

DOT Rubicon Trail Proposed Easement

# *Questions and Comments*

## Goal:

To select a preferred Rubicon Trail route location explicitly required within the Clean-up and Abatement Order (CAO).

The CAO specifically requires: “Documentation of the actual location of the Rubicon Trail within El Dorado County, including the centerline and an agreed-upon width from each side of that line. The documentation shall be in a form that shall be easily understood by both the public and law enforcement officials.”

