

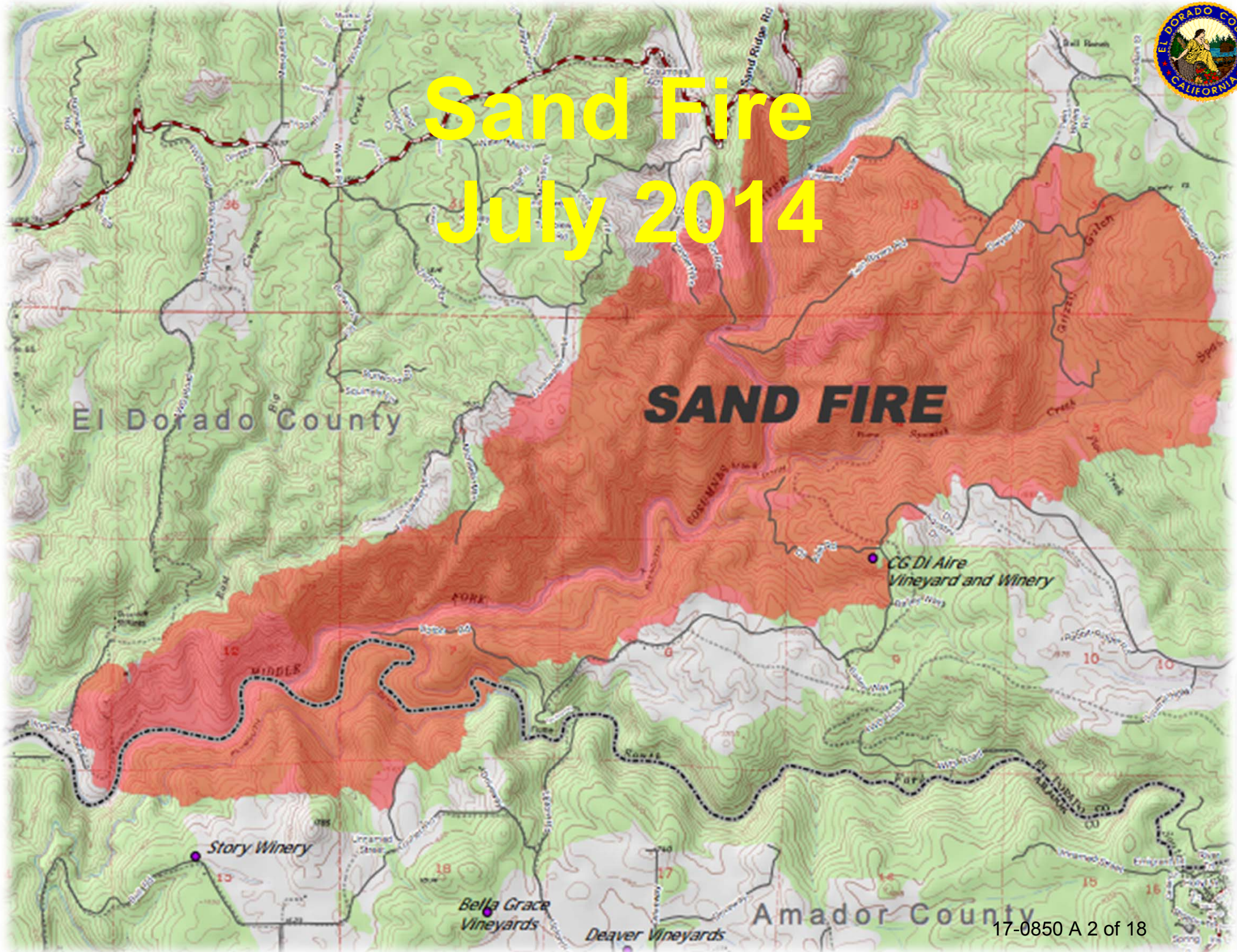
Board of Supervisors August 15, 2017



Tree Mortality Update



Sand Fire July 2014





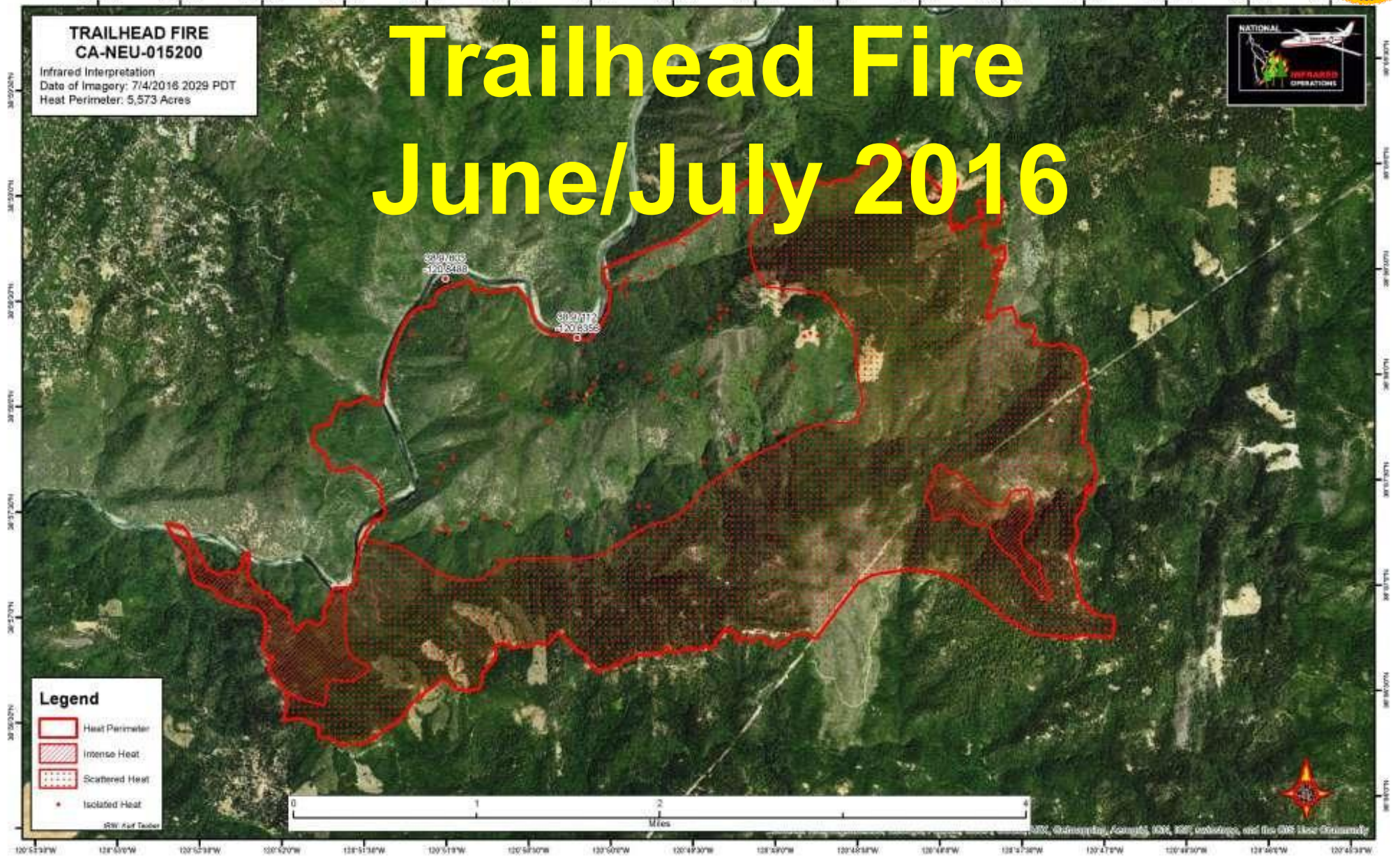
King Fire September 2014





Trailhead Fire June/July 2016

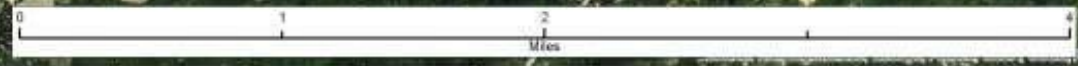
TRAILHEAD FIRE
CA-NEU-015200
Infrared Interpretation
Date of Imagery: 7/4/2016 2029 PDT
Heat Perimeter: 5,573 Acres



Legend

- Heat Perimeter
- Intense Heat
- Scattered Heat
- Isolated Heat

©2016 Air Tasker



How We Got Here



1. Over a Century of Fire Suppression ←
2. Lack of Forest Management
3. Warming Climates
4. Exceptional Drought Conditions
5. Bark Beetle
6. Wildland Urban Interface (WUI)



How We Got Here



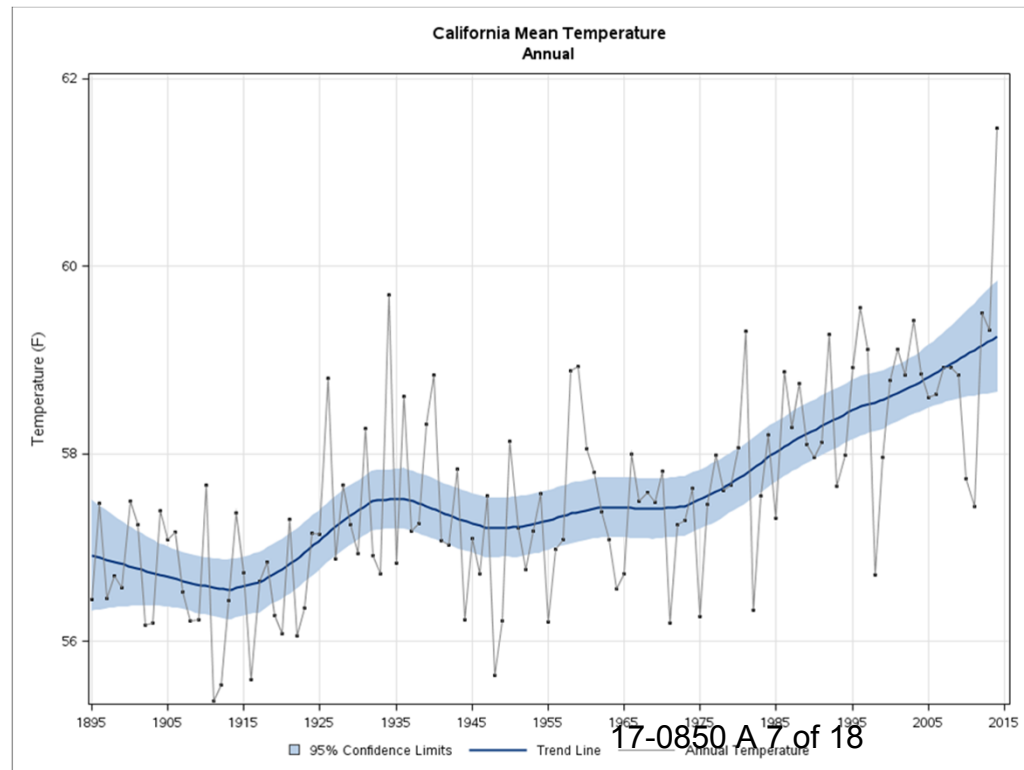
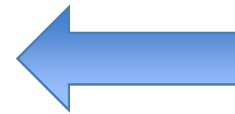
1. Over a century of Fire Suppression
2. Lack of Forest Management ←
3. Warming Climates
4. Exceptional Drought Conditions
5. Bark Beetle
6. Wildland Urban Interface (WUI)



How We Got Here



1. Over a century of Fire Suppression
2. Lack of Forest Management
3. **Warming Climates** ←
4. Exceptional Drought Conditions
5. Bark Beetle
6. Wildland Urban Interface (WUI)

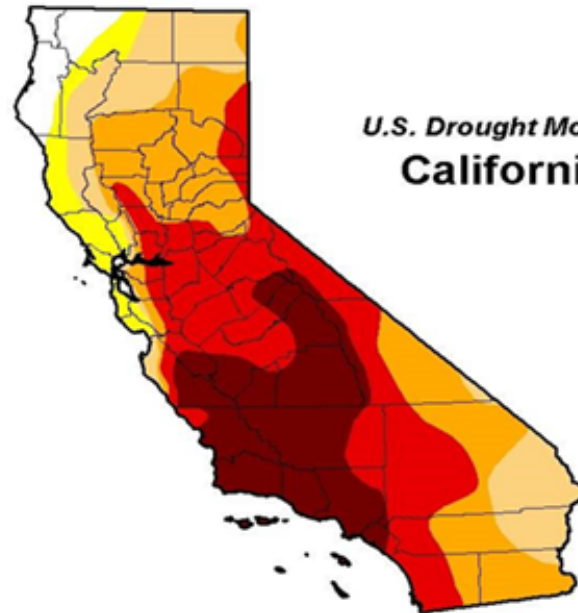


How We Got Here



1. Over a century of Fire Suppression
2. Lack of Forest Management
3. Warming Climates
- 4. Exceptional Drought Conditions** ←
5. Bark Beetle
6. Wildland Urban Interface (WUI)

April 19, 2016



March 28, 2017



U.S. Drought Monitor
California



How We Got Here

1. Over a century of Fire Suppression
2. Lack of Forest Management
3. Warming Climates
4. Exceptional Drought Conditions
5. **Bark Beetle** ←
6. Wildland Urban Interface (WUI)



How We Got Here



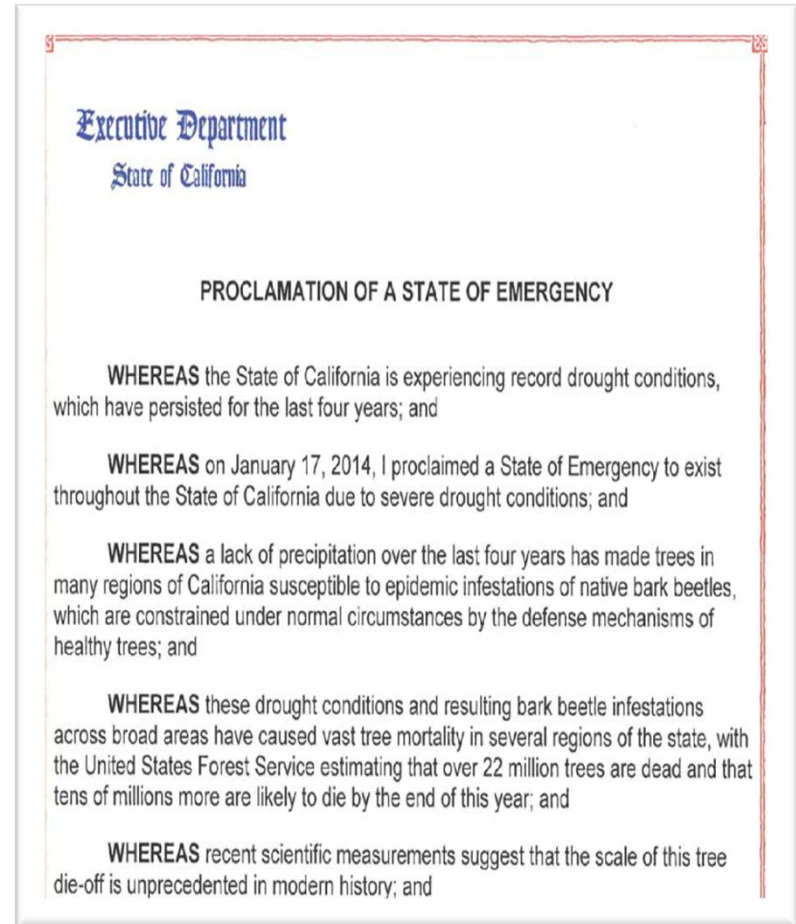
1. Over a century of Fire Suppression
2. Lack of Forest Management
3. Warming Climates
4. Exceptional Drought Conditions
5. Bark Beetle
6. **Wildland Urban Interface (WUI)** ←



TREE MORTALITY UPDATE



- October 30, 2015
- Governor Brown issues an Executive Order Proclaiming a State of Emergency due to Tree Mortality
- 19 Directives
- Statewide TM Task Force met for first time November 2015



TREE MORTALITY UPDATE



- 7 Working Groups
- Over 80 Entities
- 6 Original Counties
- 4 more Counties added in July 2016 (Calaveras, Amador, El Dorado & Placer)
- 10 County Coordination Meeting



Cal OES
GOVERNOR'S OFFICE
OF EMERGENCY SERVICES

TREE MORTALITY UPDATE



USFS Aerial Detection Survey (ADS) late summer/early fall 2016 estimated 102 million dead trees



TREE MORTALITY UPDATE



- As of April 2017 Statewide TM monthly update:
- Total Trees Removed – 647,203
- Total acres treated – 88,698
- Miles of Road/Powerlines – 100,516
- Data from USFS, CAL FIRE Units, PG&E & CalTrans



TREE MORTALITY UPDATE

- El Dorado County – proclaimed a local state of emergency on March 28, 2016
- Have a TM task force and a response plan
- CAL OES CDAA grant of \$3.106m (cost share)
- Hired a TM project coordinator – Black Fox Timber Management
- SRA TM grants 8

Posted December 3, 2016



El Dorado County Received \$1,068,838 in CAL FIRE SRA Grants for Bark Beetle Relief

- 1) Auburn Lake Trails FSC (Dead or Dying Trees)
- 2) Auburn Lake Trails FSC (Fuels Treatment)
- 3) County of El Dorado(Disadvantaged Seniors/Dead or Dying Trees)
- 4) El Dorado Irrigation District (Removal of Dead or Dying Trees)
- 5) El Dorado County Fire Safe Council (Fuels Treatment)
- 6) Grizzly Flats Fire Safe Council (Removal of Dead or Dying Trees)
- 7) Tahoe Regional Planning Agency (Public Education)
- 8) Tahoe Regional Planning Agency (Planning)



TREE MORTALITY UPDATE

- Two pilot projects along county roads, Larsen Drive in Camino and Grizzly Flat area started last week
- Total 421 trees have been identified for removal
- CAL FIRE Growlersburg crews will assist with slash treatment along county roads (ingress, egress, life safety)
- Next EDC project announcement planned in Aug.

A faded, grayscale background image showing a utility worker on a ladder next to a power pole. The worker is positioned near the top of the ladder, which is leaning against the pole. The pole has various electrical components, including a transformer and insulators. The scene is set outdoors with trees in the background.

Questions?