



**COUNTY OF EL DORADO
DEPARTMENT OF TRANSPORTATION**

Mt. Murphy Bridge

COLOMA LOTUS ADVISORY MEETING

February 6, 2025



Emergency Repair (2021 & 2025)

- Accident Sept. 2021 & Jan. 2025 - Structural Damage to Truss
- Immediate Closure
- Testing of Truss Members
- Unique Challenges & Unique Repair
- Reduced Load Rating Limit
- Importance of Bridge Replacement Project
- ***Ongoing Monitoring & Inspection**





**COUNTY OF EL DORADO
DEPARTMENT OF TRANSPORTATION**

Mt. Murphy Road Bridge

At the South Fork of the American River

PROJECT UPDATE



Coloma Lotus Advisory Meeting



PROJECT UPDATES

→ Environmental Clearances

- CEQA EIR – Approved May 2022
- SHPO MOA – Executed May 2022

→ 4(f) Document

- Caltrans Final 2023
- DOI & Final 4(f) Approval & NEPA Final Clearance 2024

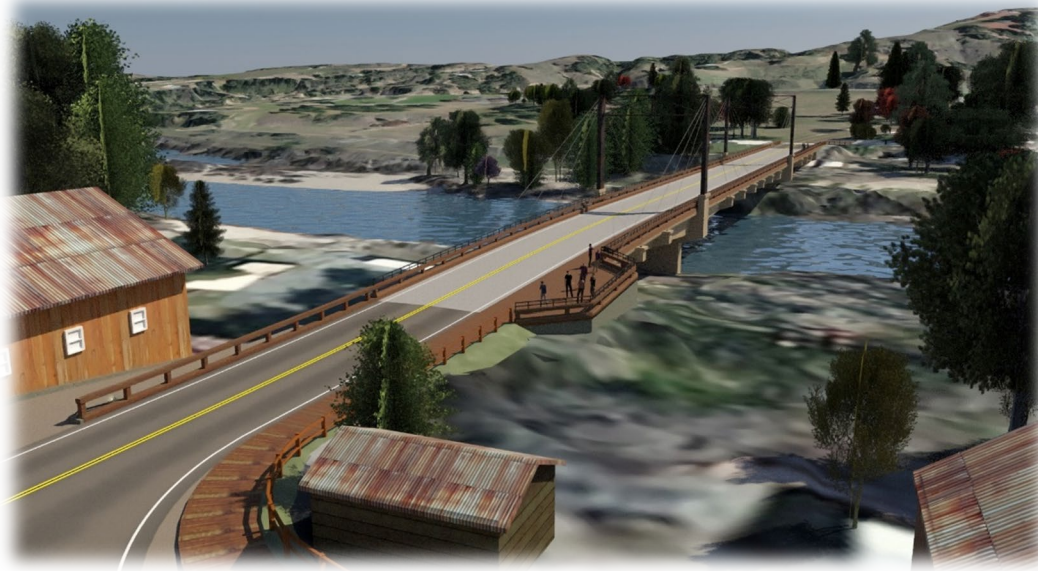
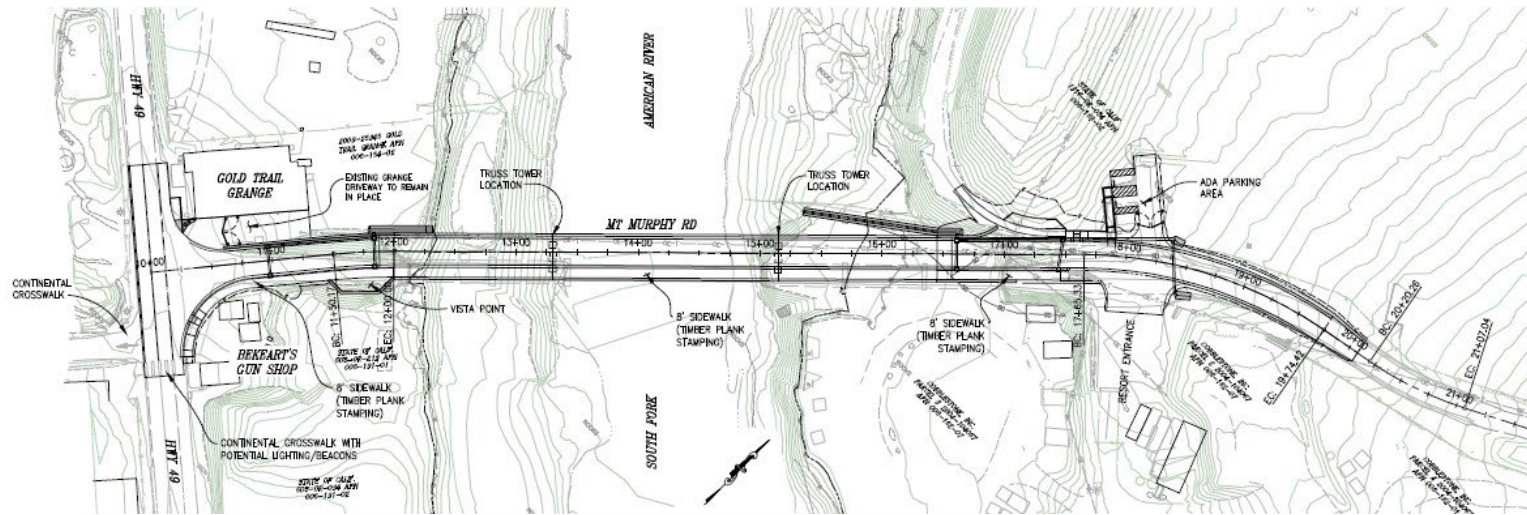
→ Next Steps: Feb 2025

- Right-of-Way: in process-2025
- Final Design: 65% -Final 2025
- Utility relocation -2025-26
- Bridge replacement 2026-2029





Proposed Project





Proposed Project






Proposed Project
















Project Website

https://www.edcgov.us/Government/dot/Bridge%20Projects/MtMurphyBridge/Pages/mt_murphy_bridge.aspx

**El Dorado**
County

Search El Dorado County...

 Home  I Want To  Government  Doing Business  Living  Visiting  Emergency Services  Connect With Us  Phone Directory  Strategic Plan  Transparent EDC

MENU **Department of Transportation Menu**

Department of Transportation

[Home](#) > [Government](#) > [Department of Transportation](#)

Mt Murphy Bridge Project


Welcome to the El Dorado County Mt. Murphy Road Bridge project website.

The Department of Transportation of El Dorado County is in the process of preparing a Project Study Report (PSR) for the Mt. Murphy Road Bridge. The purpose of the PSR is to identify possible alternatives to repair or replace the existing bridge crossing the South Fork of the American River in the town of Coloma.

Prior to commencement of the study, the Department of Transportation is conducting a public outreach effort to gather input, help identify the needs and concerns of the Community, and answer any questions about the process. This Bridge Project Study Report will reflect these issues and concerns and address potential improvements necessary to the existing facility to meet current and future needs. The pros and cons of several alternatives need to be considered before any decisions can be made.

Comments or Questions?


Online Form: [Comment Form](#)
Email: mtmurphybridge@edcgov.us
Phone: (530) 621-5900
Fax: (530) 626-0387
Mail: El Dorado County
Transportation Division
Attn: Bridge Project Coordinator
2850 Fairlane Court
Placerville, CA 95667

 [Subscribe to Mt Murphy Bridge News](#)
[More Information](#)

The County cannot adequately address all issues without public input from those who are directly affected on a daily basis. Therefore, the public is encouraged to remain engaged throughout the process.

All materials and documents used during the public outreach as well new information and announcements as they become available are provided through the links below.

[Project Overview](#)





**COUNTY OF EL DORADO
DEPARTMENT OF TRANSPORTATION**

Mt. Murphy Road Bridge

At the South Fork of the American River

PROJECT OVERVIEW (REVIEW)

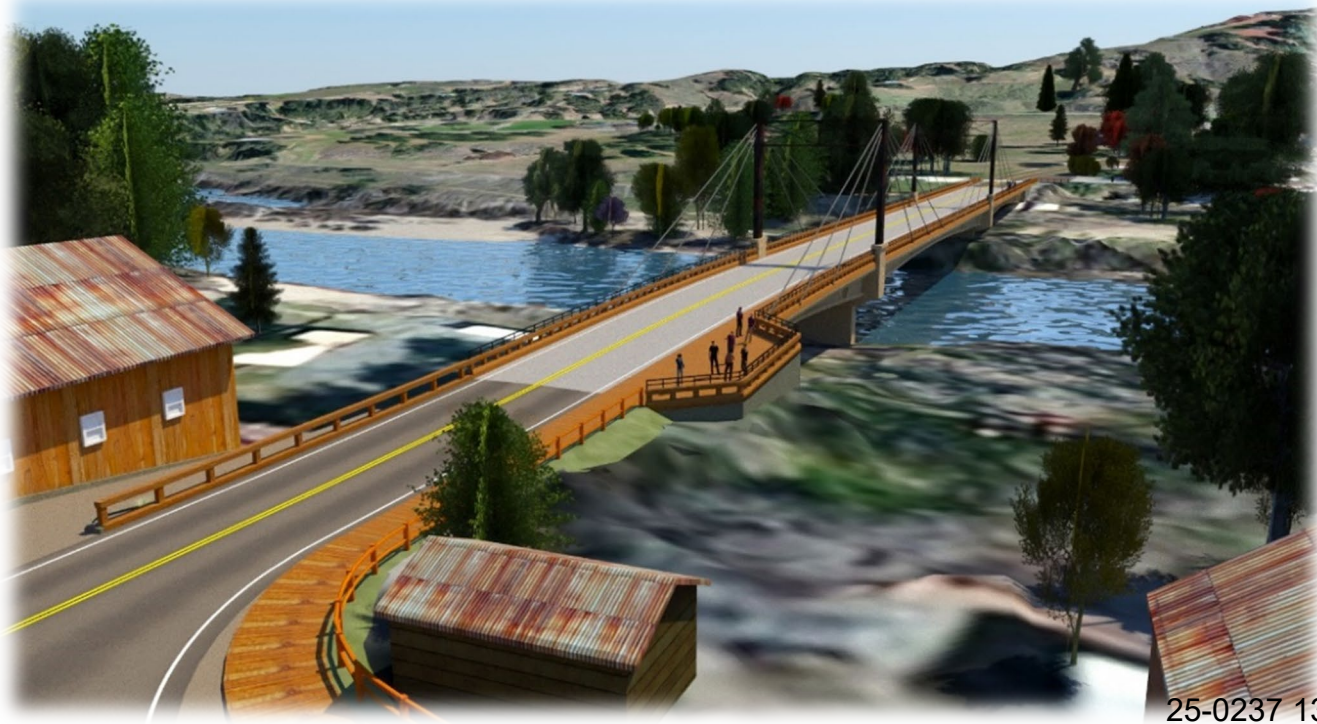


Coloma Lotus Advisory Meeting



Proposed Project

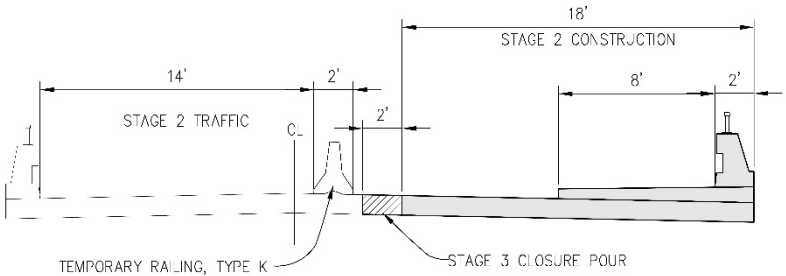
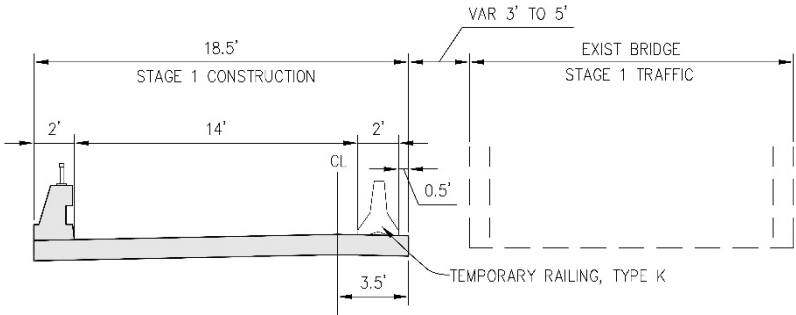
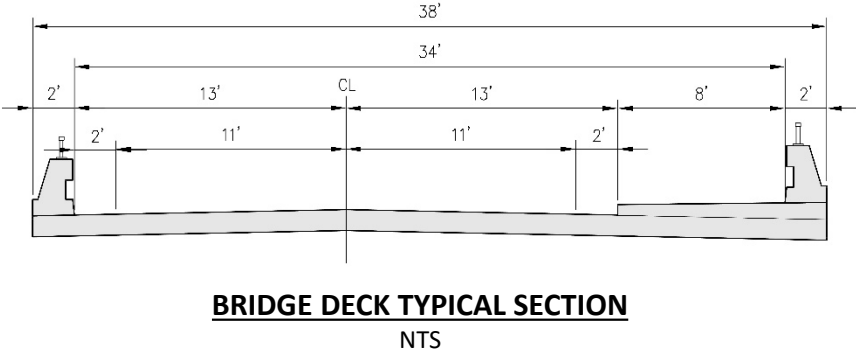
- Replacement– “On Alignment”
- Two stage construction, open new half (downstream) prior to removal of existing, remove and replace of existing, and add suspension cables.
- Provide temporary pedestrian path during construction
- Provide river traffic coordination (similar to SR49 bridge)





Proposed Project

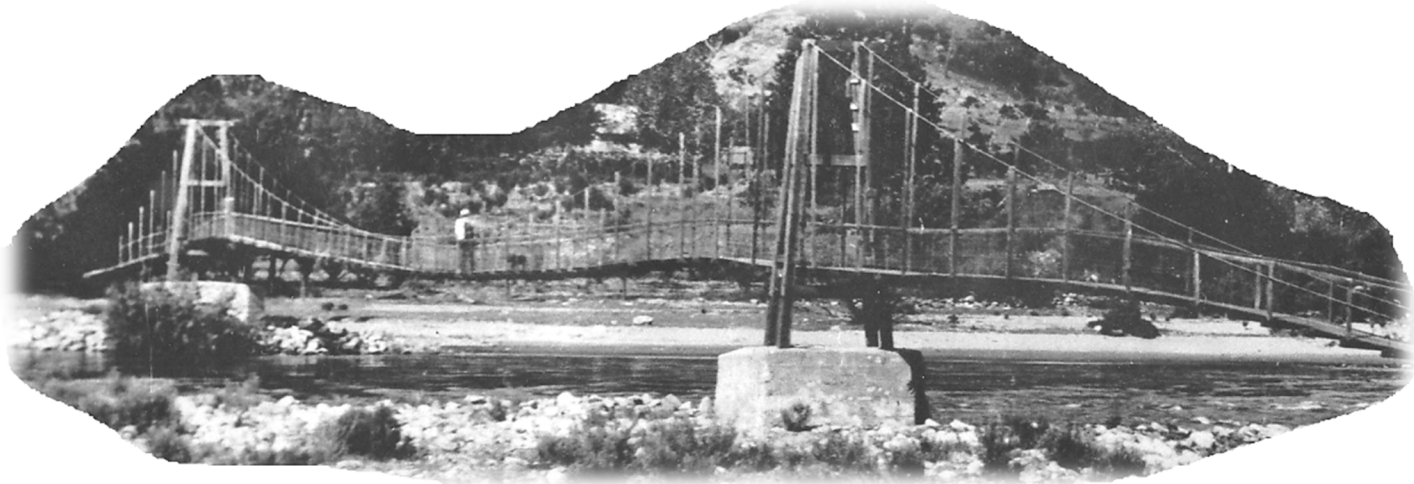
Alternative 1 (Corridor 1) – “On Alignment”





Proposed Project

- Integrating the Past
- Continuity
- Minimize Impacts





Proposed Project

↳ “Truss Tower Portals” with Cables





Coordinated Efforts

→ Extensive Coordination Efforts

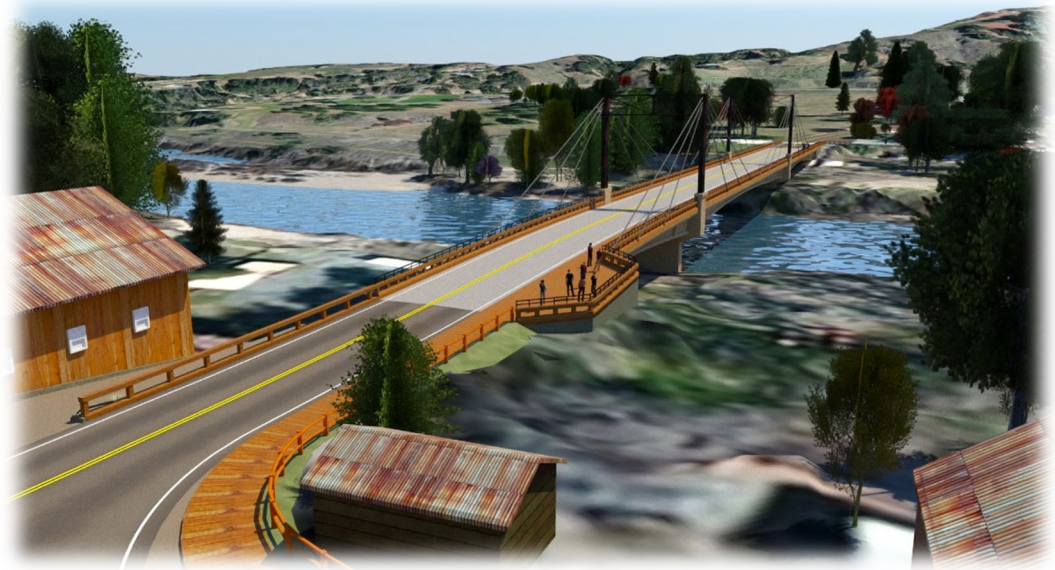
- County Of El Dorado, State Parks, Caltrans, FHWA, Tribes, OHP, Public, etc.

→ Design Features

- Evolution of Proposed Project

→ Interpretive Exhibits

- Integrating Efforts & Uses



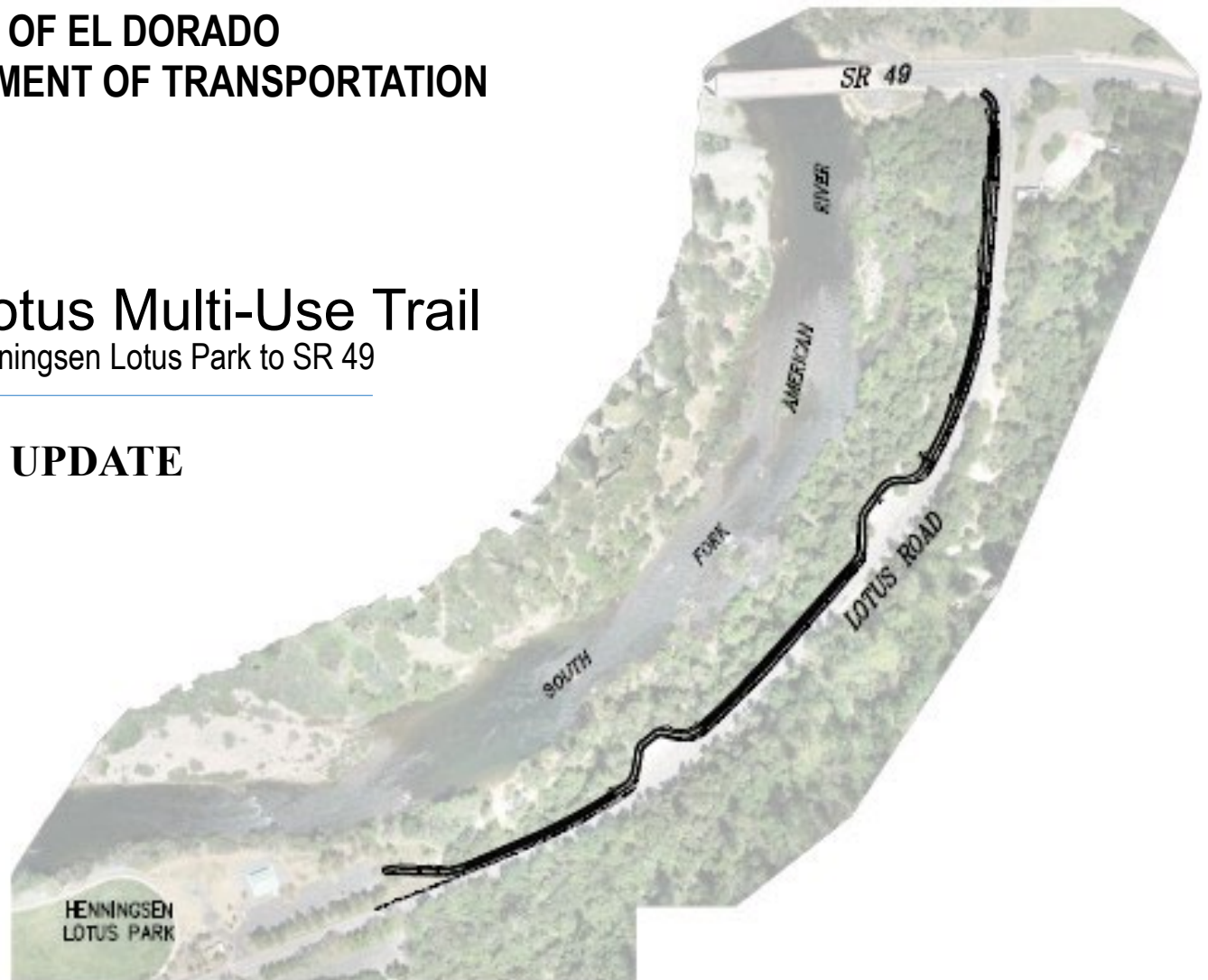


COUNTY OF EL DORADO
DEPARTMENT OF TRANSPORTATION

Henningesen / Lotus Multi-Use Trail

Class 1 Trail from Henningesen Lotus Park to SR 49

PROJECT UPDATE

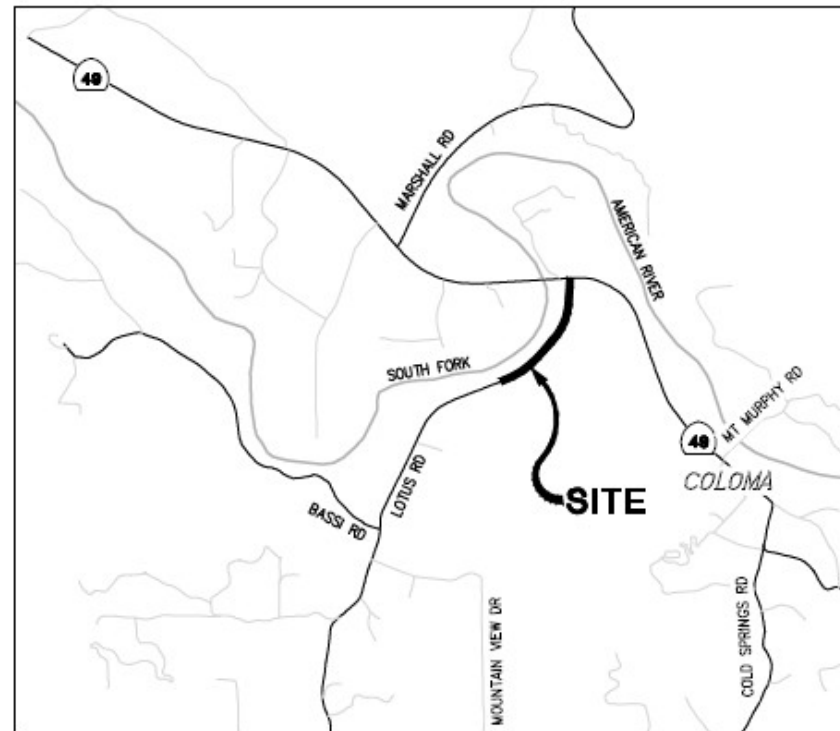


Coloma Lotus Advisory Meeting



Project Overview:

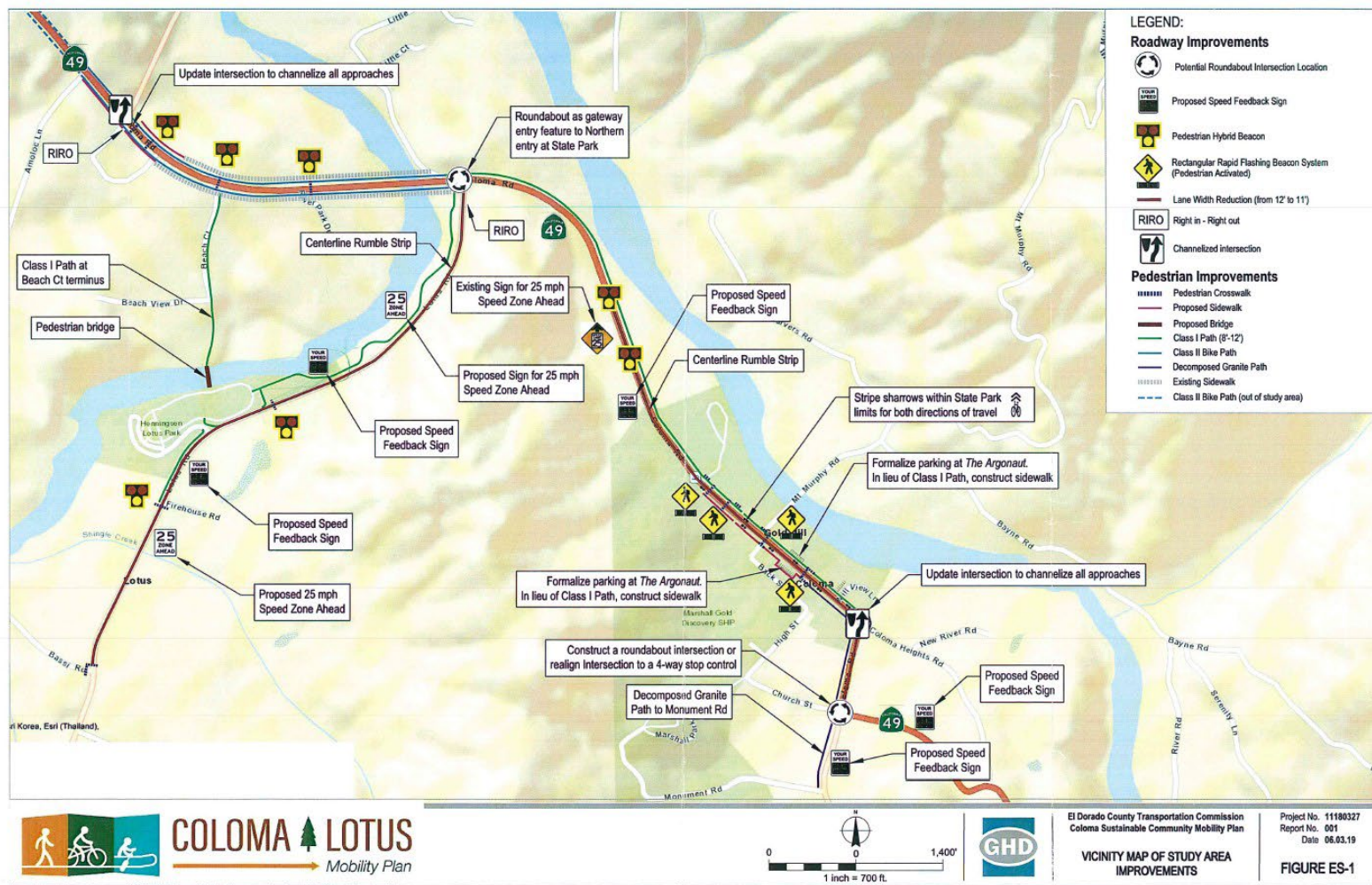
- ➔ Class 1 Multi-Use Trail
 - ➔ Approx. 2,300 LF
 - ➔ Along Lotus Road (between Henningsen Lotus Park and SR 49)
 - ➔ Ties into natural trails, park, sidewalks
 - ➔ Accommodates Bicycles, Pedestrians, etc.
 - ➔ Minimize Impacts





Project Overview:

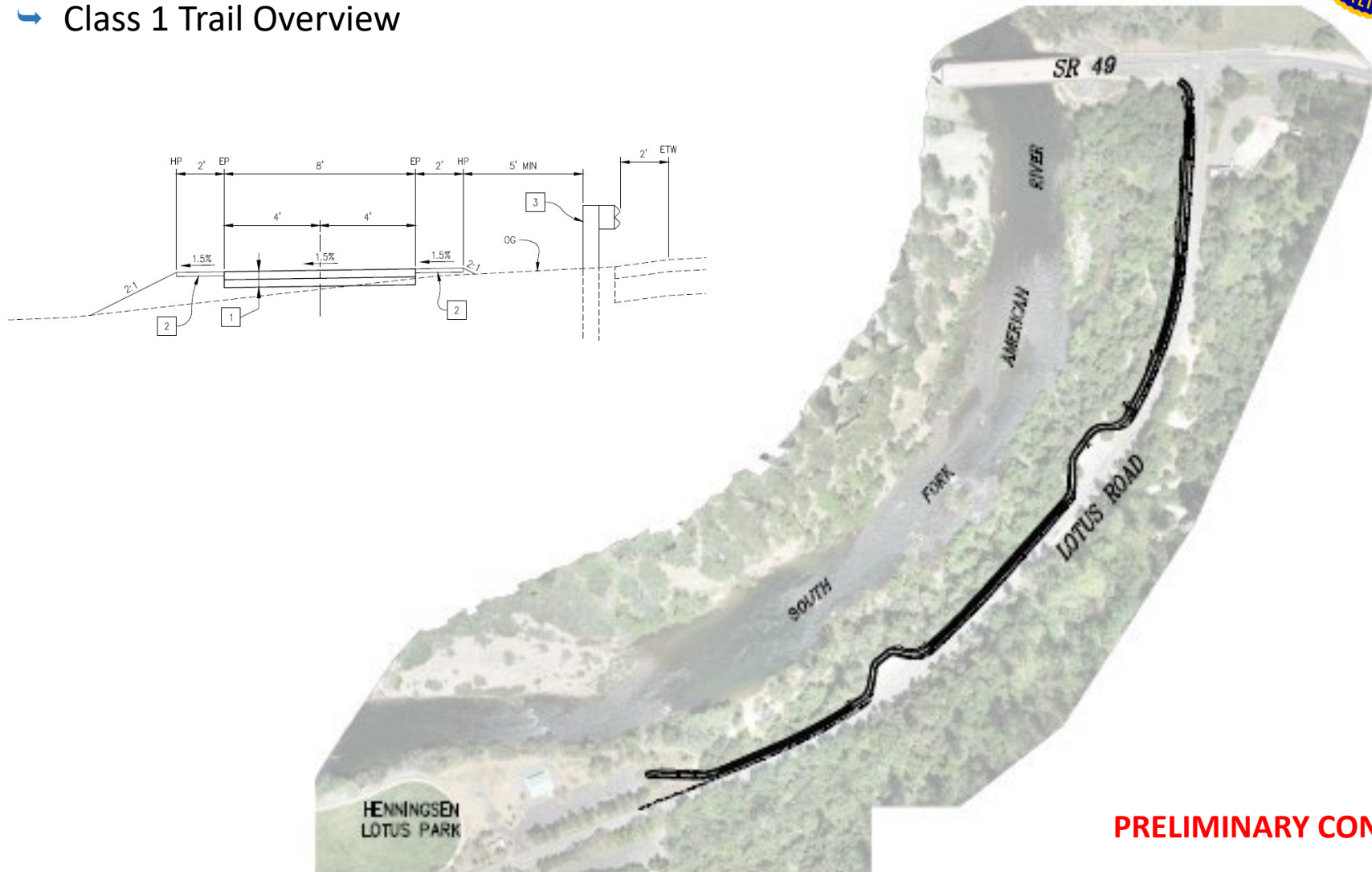
Plans & Studies





Project Overview:

➔ Class 1 Trail Overview

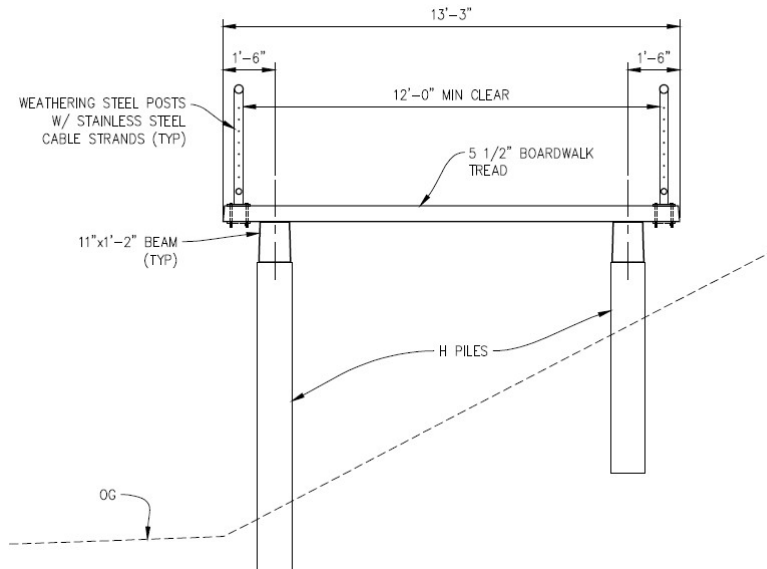


PRELIMINARY CONCEPT



Project Overview:

➡ Boardwalk Overview



PRELIMINARY CONCEPT





Project Overview:

- Identifying & Pursuing Grants
 - CMAQ (PE, ROW)
 - Potential Future ATP, State Parks
 - PE, ROW, CON
 - Look Ahead Schedule Considerations

