

# County El Dorado Department of Transportation



# What We Do...



**Traffic Engineering**



**Bridge Maintenance**



**Capital Improvements**



**Land Development**



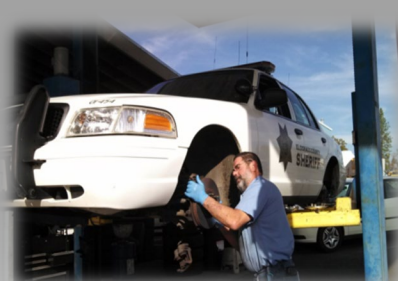
**Permits / Inspection**



**Drainage**



**ROW**



**County Fleet**



**Road Maintenance**



**Snow Removal**

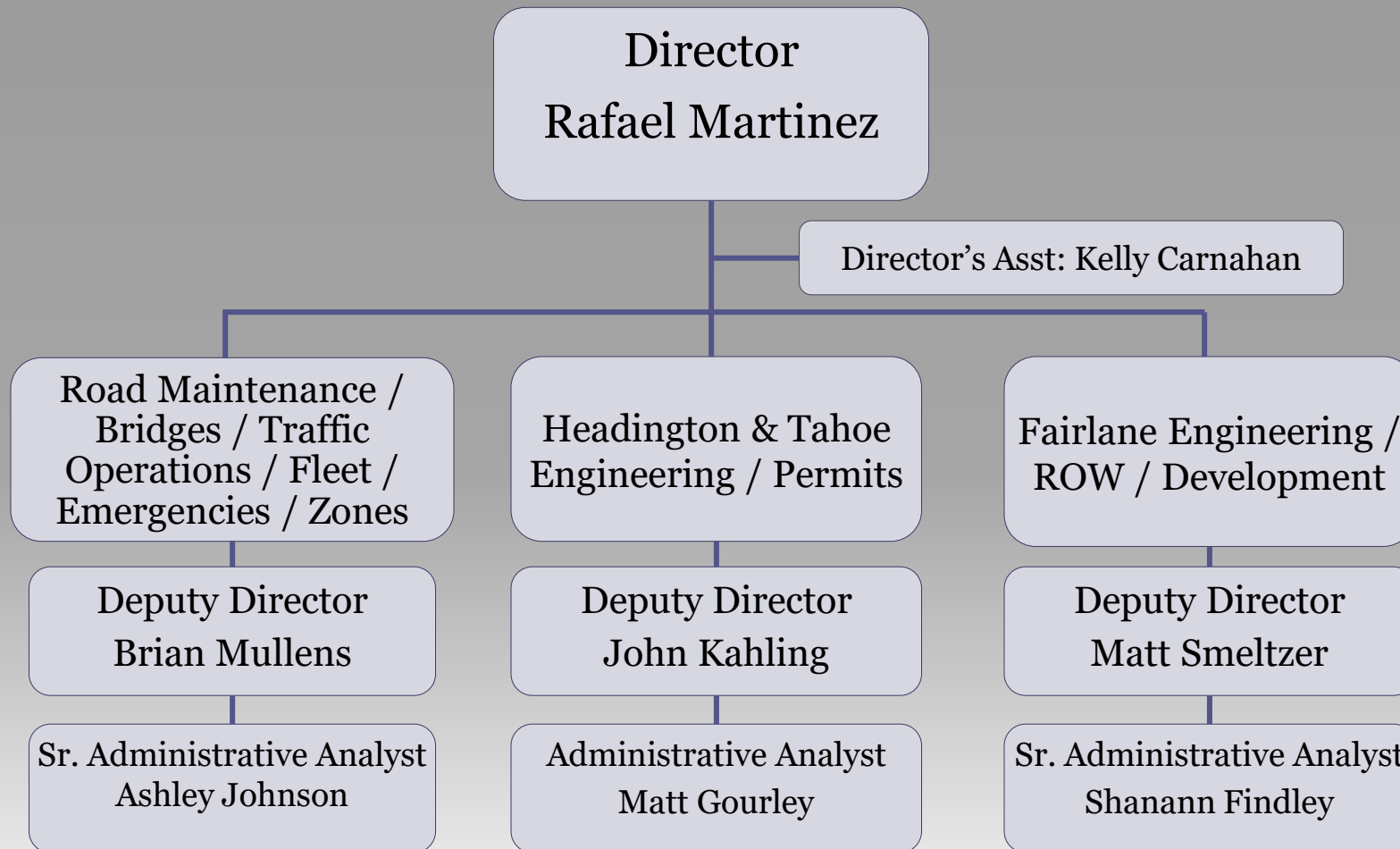


**Tahoe**



**Vegetation Management**

# Department of Transportation



# Department of Transportation

## Maintenance and Operations

- Roadway Repair and Rehab
  - Bridges / Culverts / Roads
- Fleet
  - Purchase / Repairs / Environmental
- Snow Removal
- Drainage
- Traffic Engineering
  - Speed Limit / Stop Signs / Signals
  - Traffic Studies
- Emergencies
- Vegetation Management



# What does DOT Maintain

	Units	Quantity
Box Culverts	Ea	100+
Bridges	Ea	76
Ditches	Miles	950
Culverts	Ea	10,000+
Guardrails	Feet	37,000
Pavement Markers	Miles	138
Roads	Miles	1083
Sidewalks	Miles	70
Signalized Intersections	Ea	57
Signs	Ea	15,500
Timber Walls	Feet	1,600
Striping	Miles	820



# Department of Transportation

## Engineering

- Planning/Design/Grants
  - Bridges
  - Roads
  - Interchanges
  - Transportation(Bike and Ped)
- Construction Management (All of the Above)

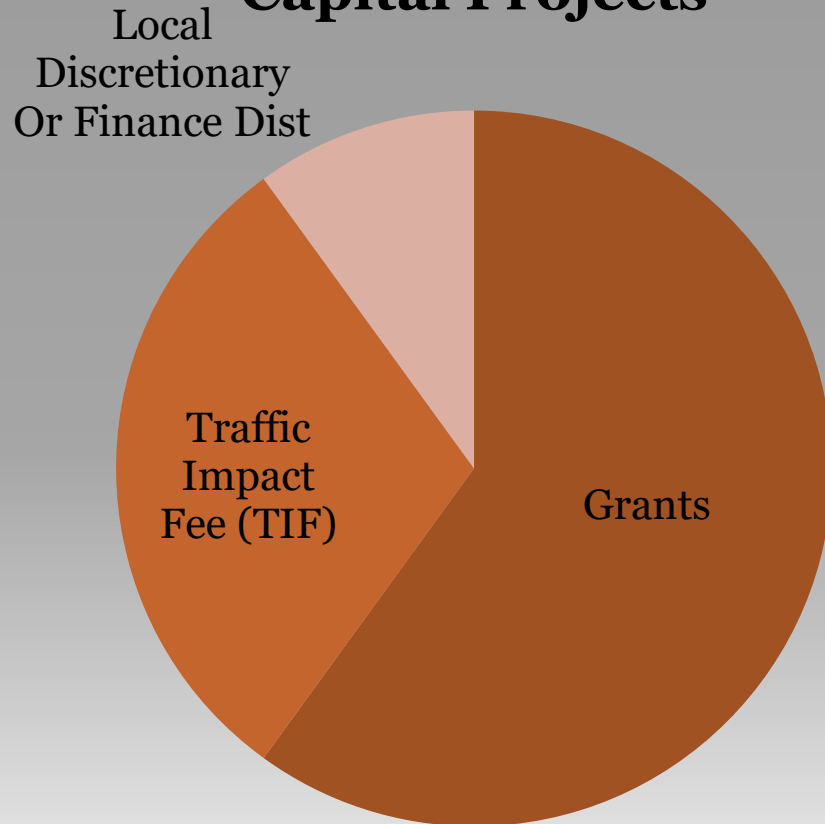


## Development/Right of Way/Environmental

- Permits
- Property Acquisition
- California and Federal Environmental
- Plan Check and Inspection of all Right of Way Entries
- Coordinate with Utilities
- Materials Testing and Labs

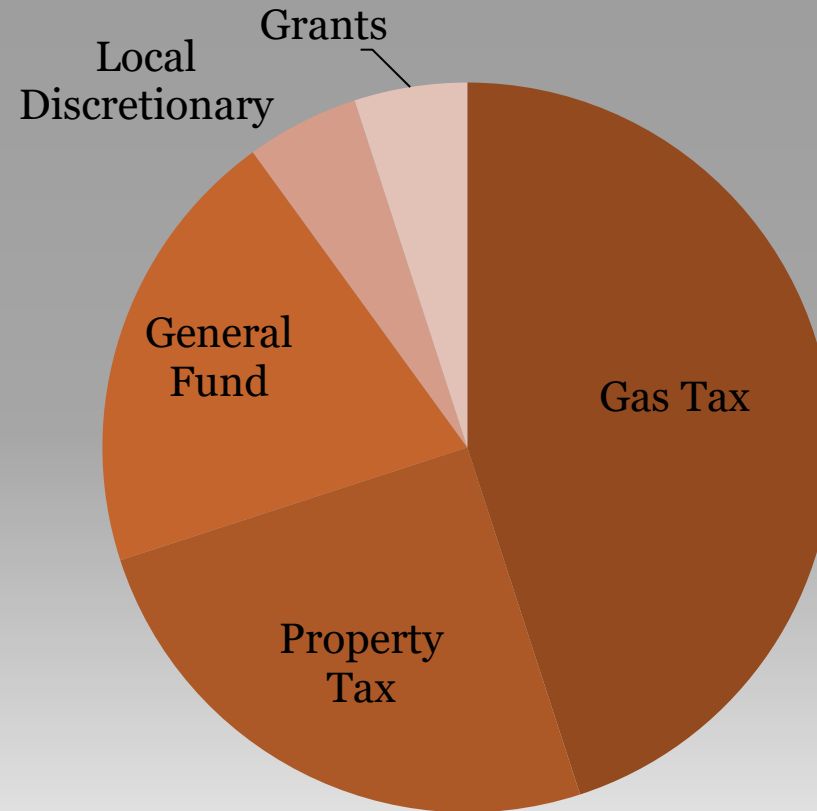
# Transportation Budget 101

## Funding for Capital Projects



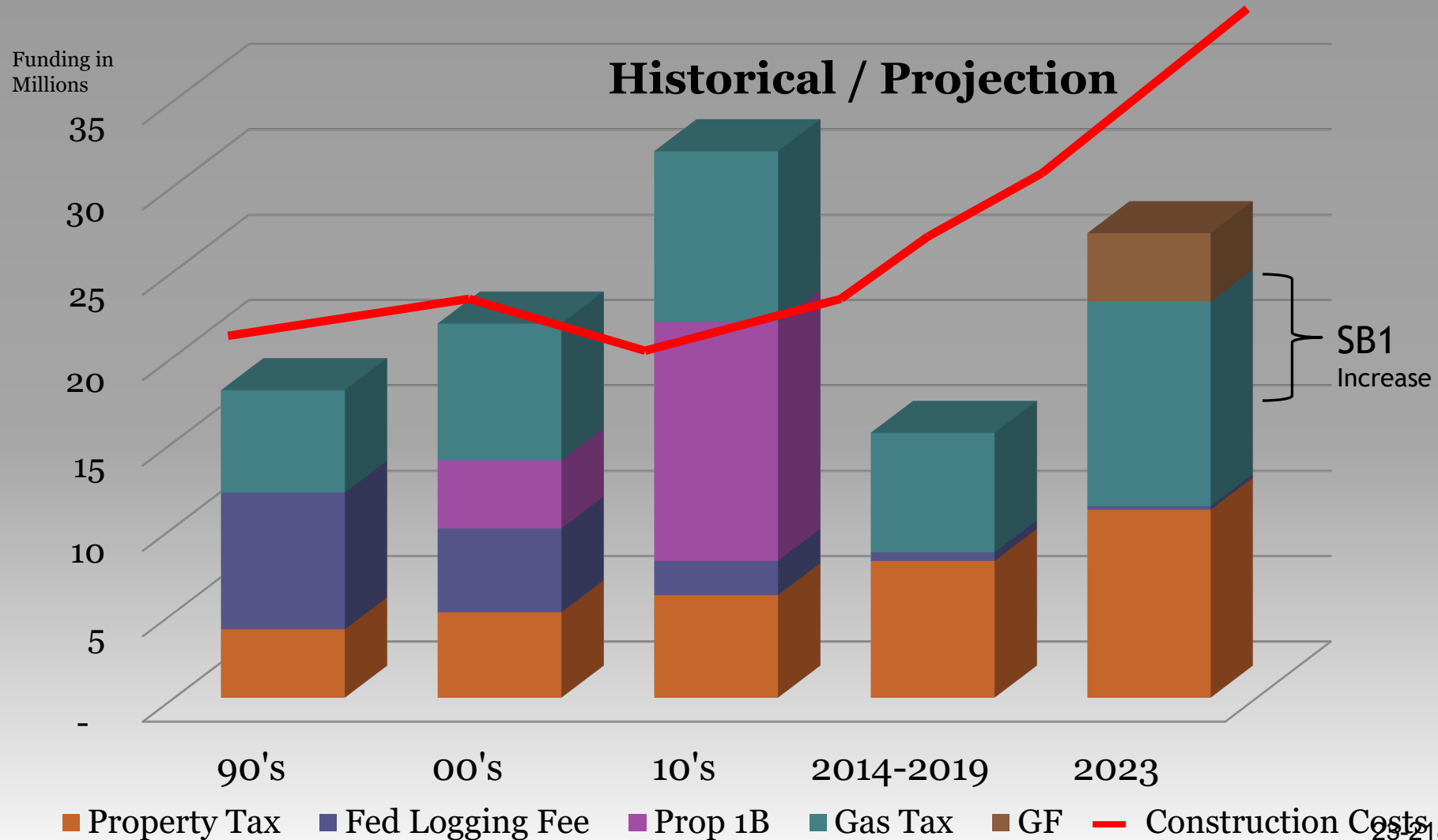
\$200 M+

## Funding for Maintenance



\$25 - 30 M+

# Transportation Budget





# El Dorado County Transportation SB1 List

- Multiple Roads in Governor's Village area in El Dorado Hills
- E-16 from Pleasant Valley Rd. to Fairplay Rd.
- El Dorado Road area, including Runnymede Rd. and Echo Ln.
- Salmon Falls Rd. from Rattlesnake Bar Rd. to Gallagher Rd.
- Sly Park Rd. from Pony Express Trl. to Mormon Emigrant Trl.
- Complete Pioneer Trl. & South Upper Truckee Rd.
- Chip seal Mount Murphy Rd. & Russell Hollow Rd.
- Grind & Pave Snows Rd

# El Dorado County Transportation

## Websites:

- **<http://www.edcgov.us/DOT>**
- **<https://www.facebook.com/eldoradocountyroads>**

## Connect With Us:

- **Email - [road.maintenance@edcgov.us](mailto:road.maintenance@edcgov.us)**
- **Phone – (530) 642 - 4909**