

DIAMOND SPRINGS COMMUNITY PARK

FINAL ENVIRONMENTAL IMPACT REPORT



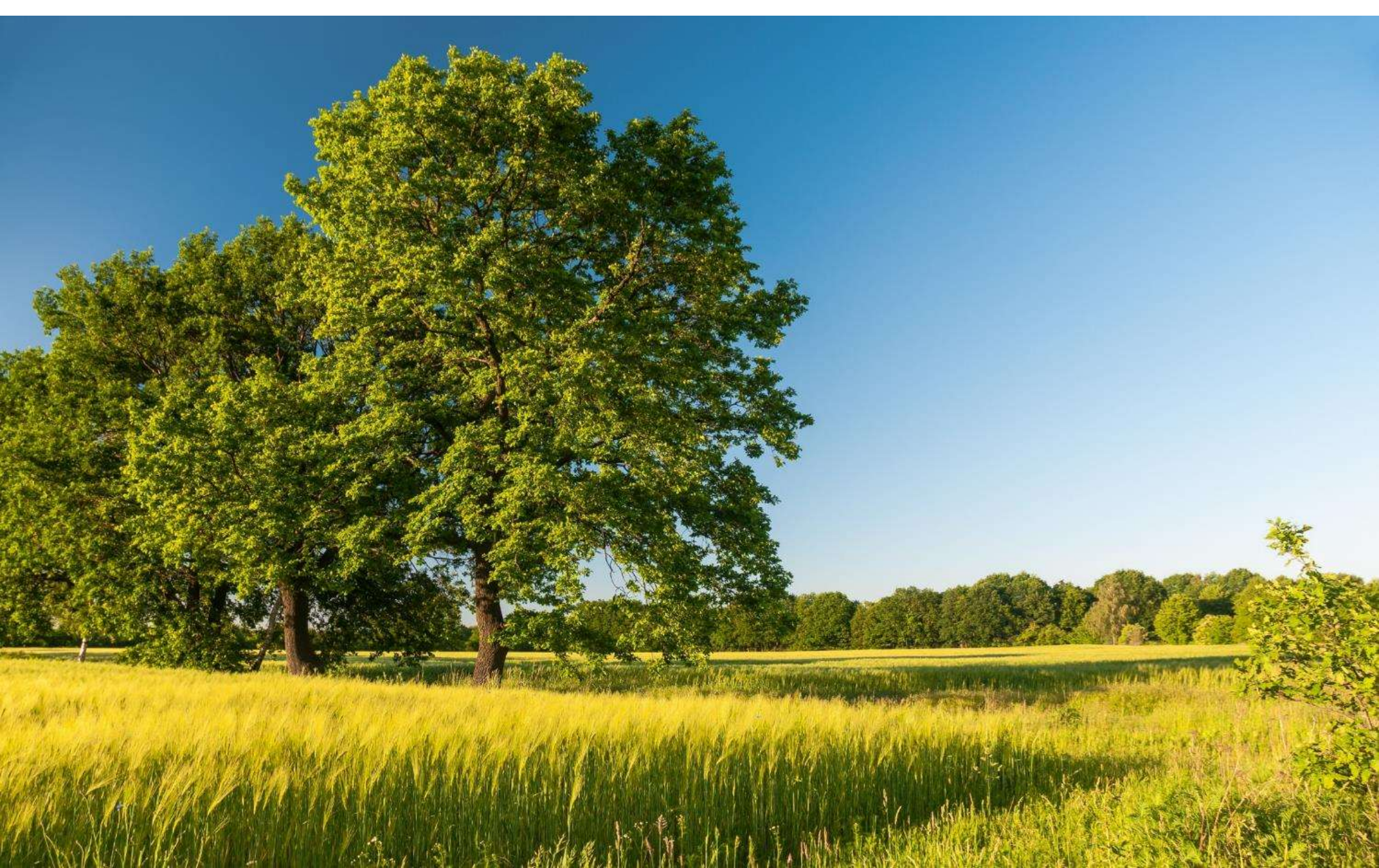
December 14, 2023



**EL DORADO COUNTY
BOARD OF SUPERVISORS**

DIAMOND SPRINGS COMMUNITY PARK ENVIRONMENTAL IMPACT REPORT

- **Project Objectives and Overview**
- **Community Engagement/Design Process**
- **Environmental Impact Report (EIR) Process**
- **Questions and Answers**



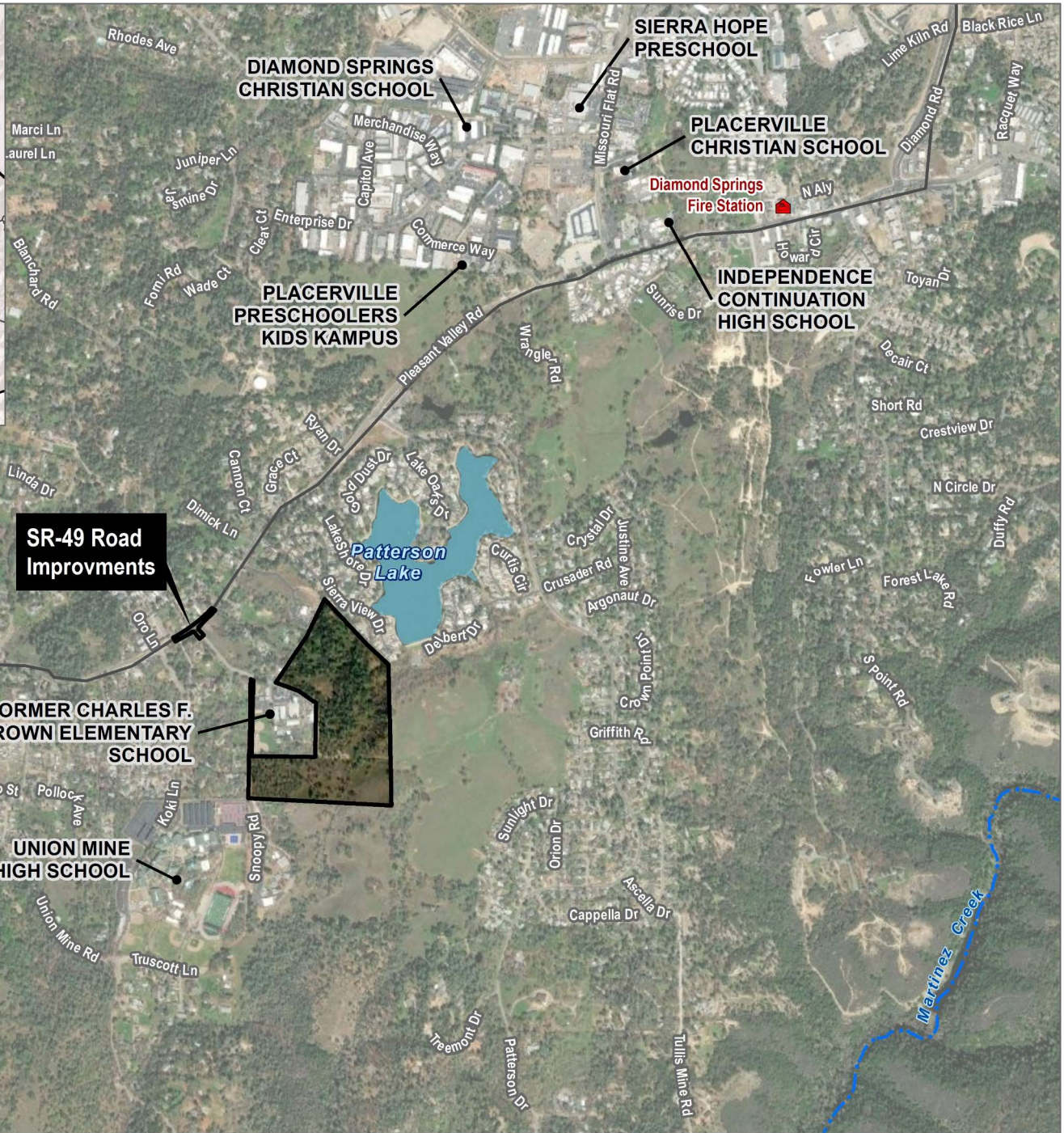
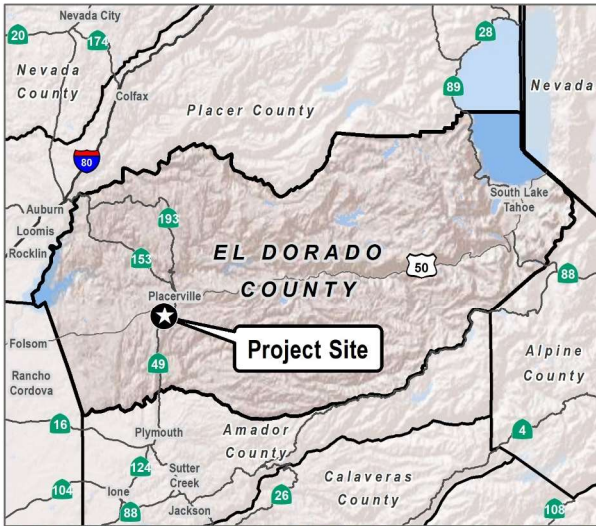
PROJECT OBJECTIVES AND OVERVIEW

PROJECT OBJECTIVES

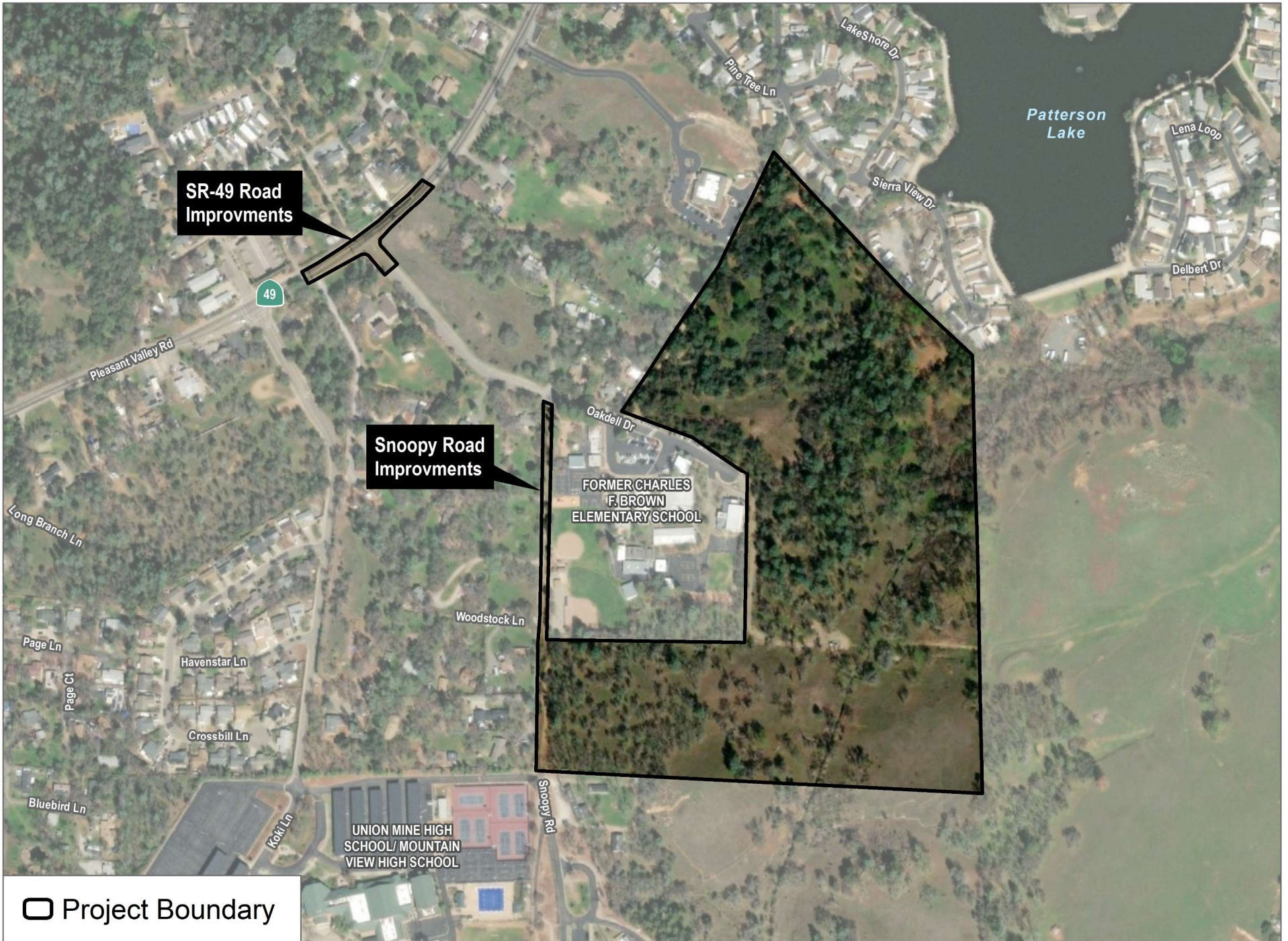
- **Provide recreational facilities for use by the community in the Diamond Springs area.**
- **Provide a variety of recreation amenities including multi-purpose fields, ballfields, playgrounds, picnic areas, and tennis courts.**
- **Provide a community gathering point.**
- **Provide a potential community center for emergency purposes.**
- **Protect environmental resources, including cultural and biological resources.**

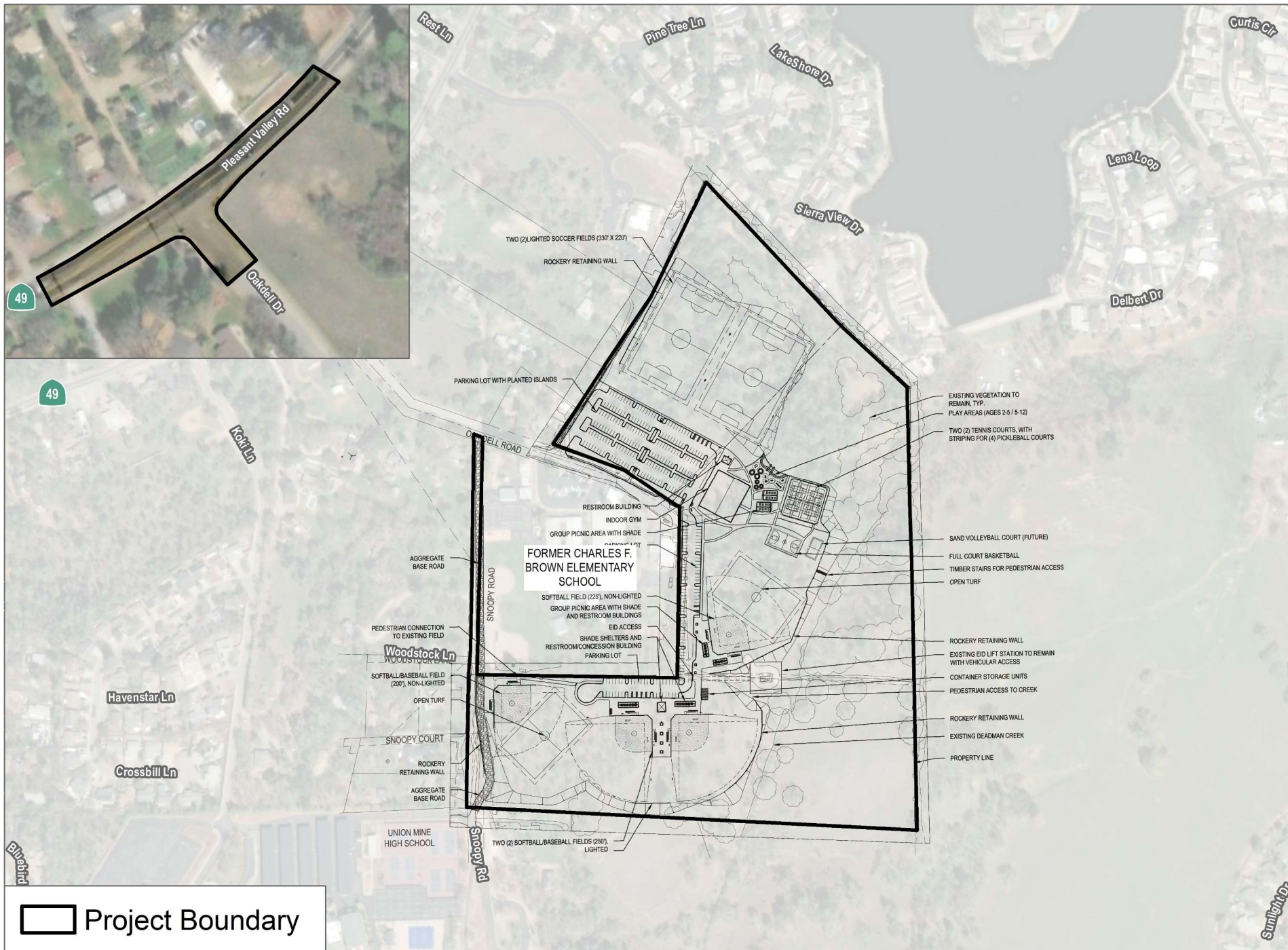
PROJECT OVERVIEW

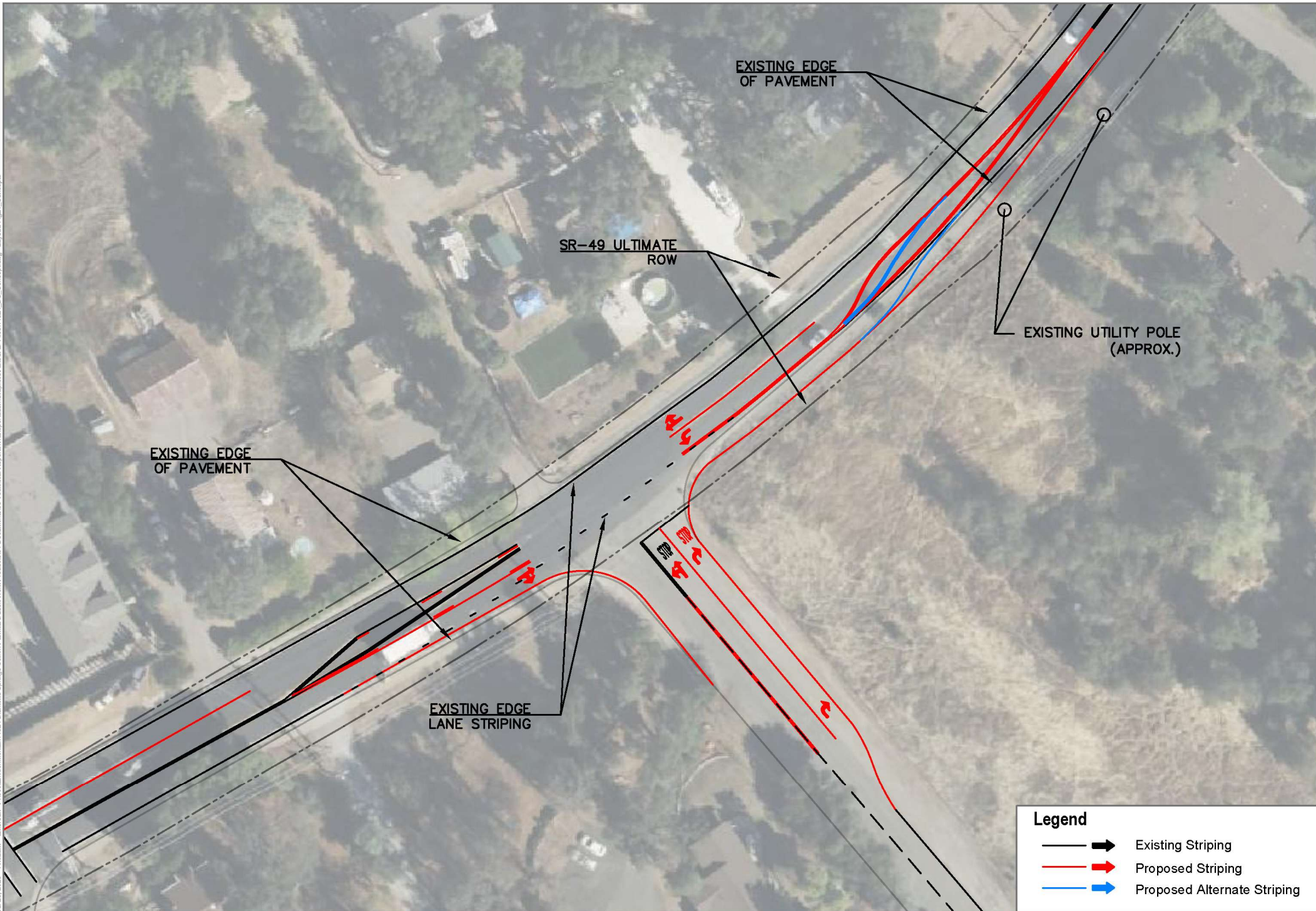
- **Project site is located 3447 Clemenger Drive in Diamond Springs, directly accessible to Highway 49 via Oak Dell Road**
- **Project site consists of two largely undeveloped, contiguous parcels totaling 39.5 acres**
- **The western and central portion of the site would be graded for active uses and the eastern portion of the site would not be developed, except for trails**



□ Project Boundary







PROJECT OVERVIEW

- **The Park Design includes:**
 - **Soccer and Softball Fields**
 - **Basketball Courts,**
 - **Tennis/Pickleball/Sports courts**
 - **Play Area (ages 2-5/5/12)**
 - **Recreational Indoor Gym**
 - **Pedestrian Trails,**
 - **Designated Parking Areas**
 - **Restrooms/Concessions**
 - **Lighting**
 - **Open Turf**

PROJECT OVERVIEW

- **The project is designed to improve County resiliency and reduce vulnerability in the event of emergencies/natural disasters (wildfire, flooding, etc.):**

The project's vehicular access, circulation, and utility connections will support emergency operations and occupation by emergency event evacuees.

PROJECT OVERVIEW

- **Normal park hours of operation are from dawn to dusk, 7-days a week**
- **The lighted fields may be used until 10:00 PM when programmed activities are scheduled**
- **The Project does not include a Public Address System**



COMMUNITY ENGAGEMENT/DESIGN PROCESS

COMMUNITY ENGAGEMENT/DESIGN PROCESS

- May 2022 Community Listening Session
Stakeholder Meetings (Individuals and Key County Staff)
Define Environmental Constraints
Develop Concept Plans
- July 2022 Community Design Workshop
Develop Preferred Master Plan
- August 2022 Parks and Recreation Commission Meeting
Review Alternative and Preferred Plans
- September 2022 Diamond Springs and El Dorado Advisory Committee
Review Alternative and Preferred Plans
- September 2022 Board of Supervisors Presentation
Summary of Preliminary Designs and Community Input
BOS Approved Preferred Plan (Option B) for Study in EIR



INITIAL CONCEPTS

A



B



C



REFINED CONCEPTS

Meets many programmatic needs in County Master Plan

- 55% developed/active recreation
- 45% preserved/passive recreation
- 323 parking stalls + 50 existing at Charles Brown Elementary, (350 guided)
- (4) Ball fields: (1) 200'+, (3) 250'
- (2) Soccer fields: 330'x220' // (2) 240'x150' in open turf/outfield areas
- (2) Tennis Courts / (8) pickleball courts
- (1) basketball court
- Playgrounds for ages 2-5 and 5-12
- Group picnic areas, restrooms, concession building, indoor gym (100' x 130')

PREFERRED CONCEPT (PLAN B)





ENVIRONMENTAL IMPACT REPORT PROCESS

ENVIRONMENTAL IMPACT REPORT (EIR)

PROCESS

- May 2023 Notice of EIR Preparation and Initial Study Published
- September 2023 Draft EIR Released
- November 2023 Draft EIR Review Period Ended
- December 2023 Board of Supervisors Consideration of the Final EIR

RESOURCES CONSIDERED

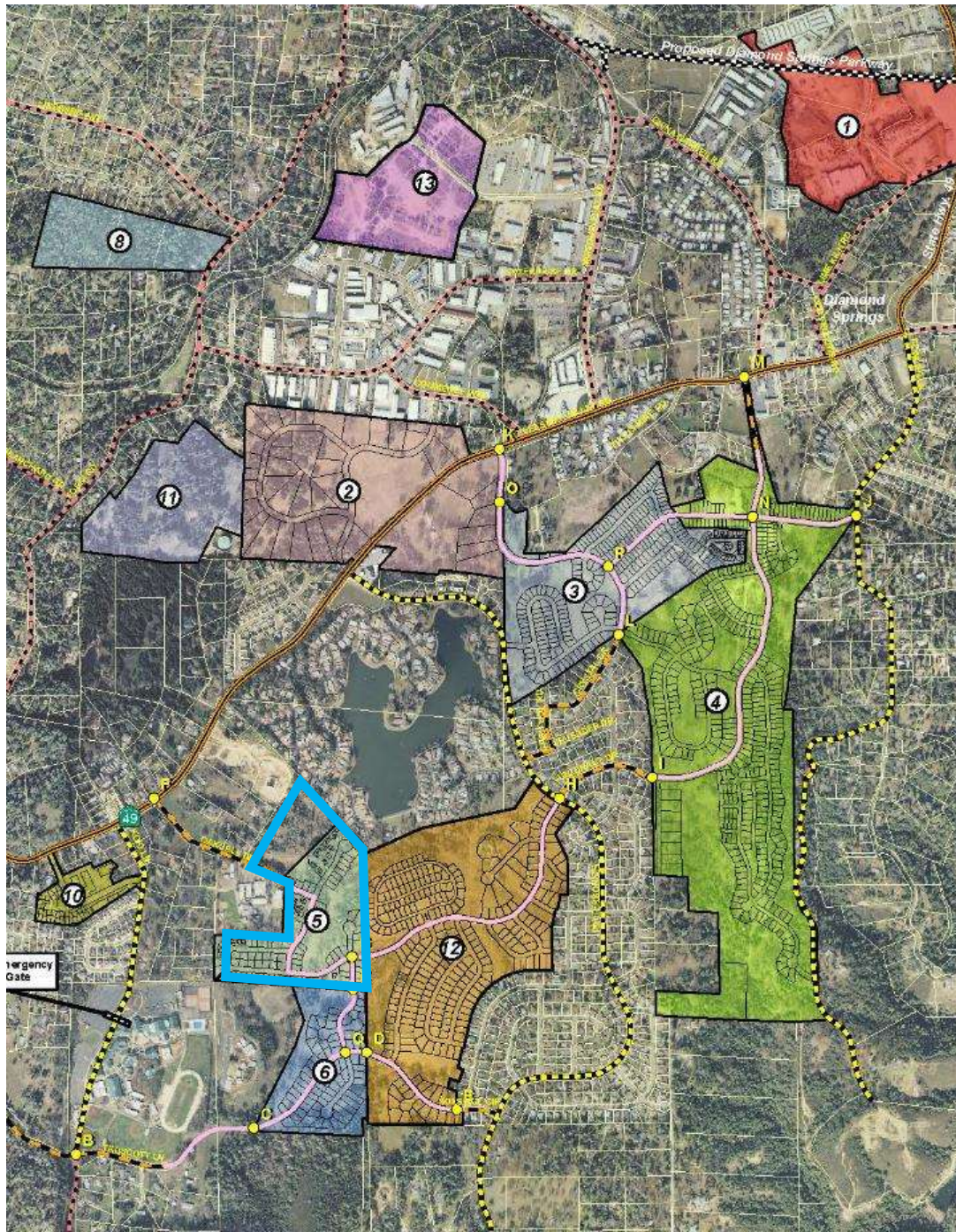
- Aesthetics
- Air Quality
- Biological Resources
- Cultural Resources
- Tribal Cultural Resources
- Energy
- Geology/Soils
- Hydrology/Water Quality
- Hazards/Hazardous Materials
- Transportation/Traffic
- Noise
- Utilities/Service Systems
- Public Services and Recreation
- Wildfire

ALTERNATIVES CONSIDERED

- Proposed Project
- No Project Alternative
- Roadway Connector Alternative
- Alternative Site Plan/Lower Density Use Park



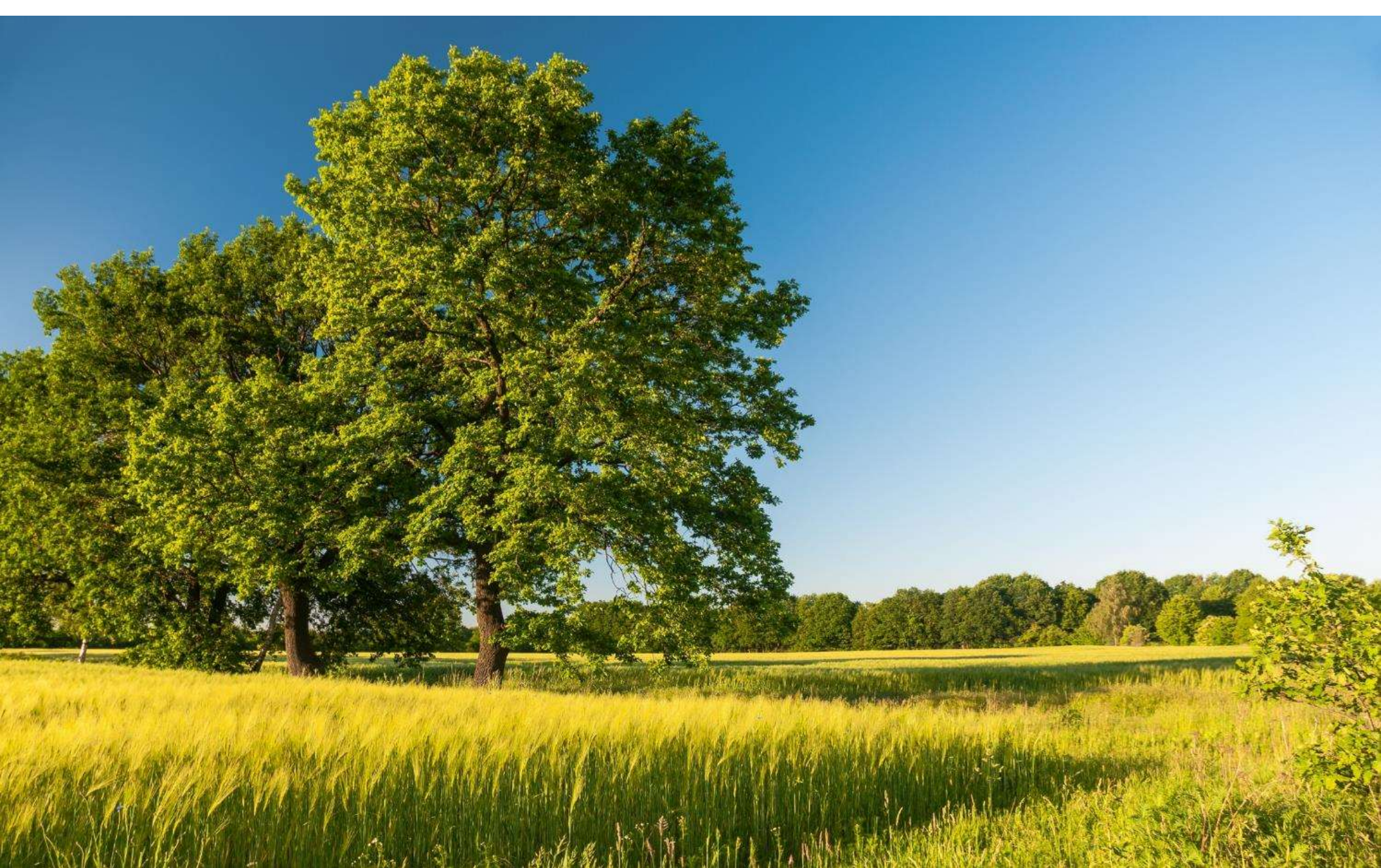
PREFERRED ALTERNATIVE



ROADWAY CONNECTOR ALTERNATIVE

ROADWAY CONNECTOR ALTERNATIVE

- Formulated in Response to Public Comment and consistent with the Diamond Springs and El Dorado Area Mobility and Livable Community Plan (MLCP)
- The Board of Supervisors received and filed the MLCP on May 1, 2012 and the plan was never adopted.
- MLCP is an advisory, not prescriptive, policy document



QUESTIONS AND ANSWERS

THANK YOU!