



APPROVED
EL DORADO COUNTY
BOARD OF SUPERVISORS

DATE: October 24, 2023

EXECUTIVE SECRETARY: Karen L. Garner

RECEIVED

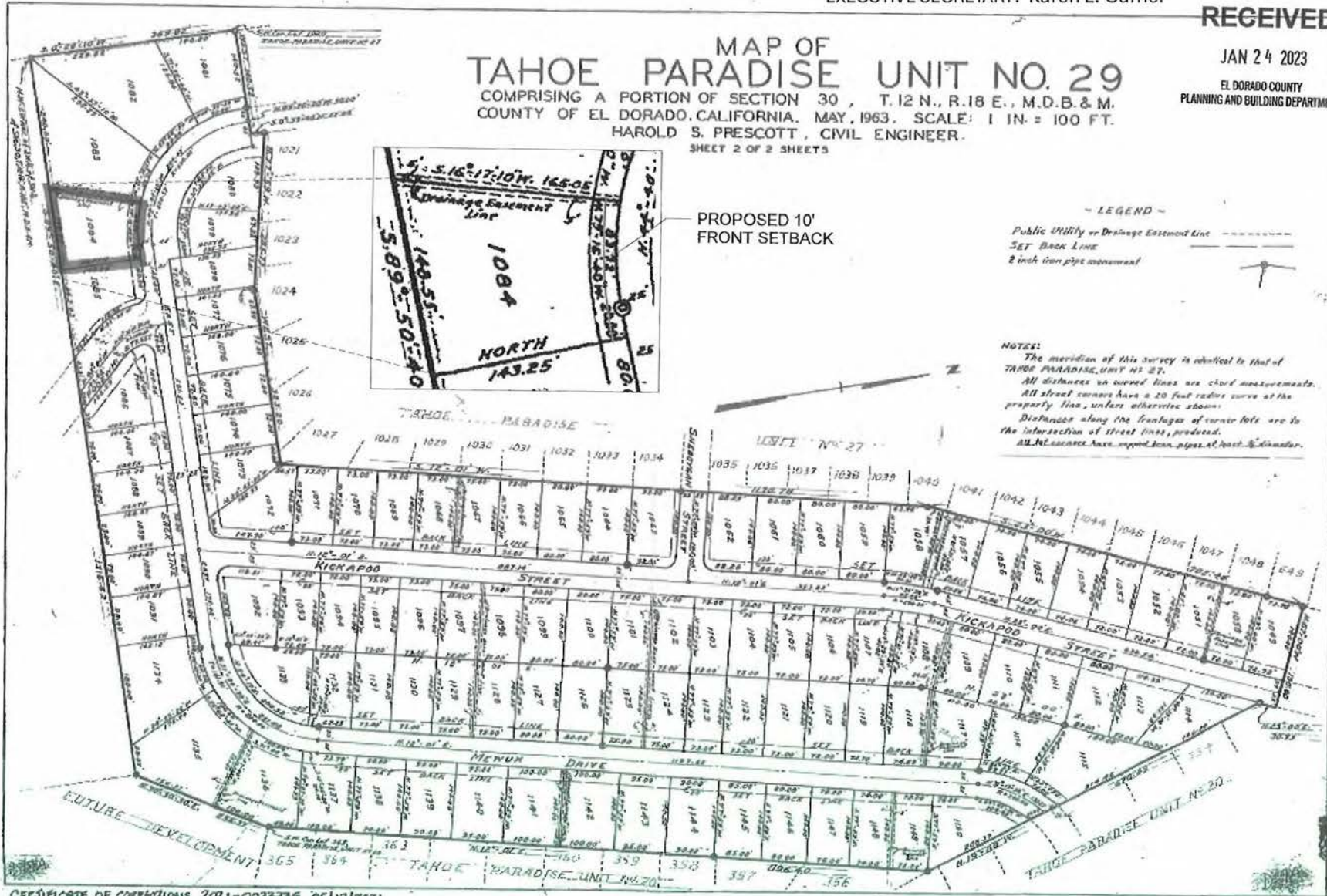
JAN 24 2023

EL DORADO COUNTY
PLANNING AND BUILDING DEPARTMENT

MAP OF
TAHOE PARADISE UNIT NO. 29

COMPRISING A PORTION OF SECTION 30, T. 12 N., R. 18 E., M.D.B. & M.
COUNTY OF EL DORADO, CALIFORNIA. MAY, 1963. SCALE: 1 IN. = 100 FT.
HAROLD S. PRESCOTT, CIVIL ENGINEER.

SHEET 2 OF 2 SHEETS



A-110

REA

42

LEGEND
Public Utility or Drainage Easement Line
SET BACK LINE
2 inch iron pipe monument

NOTES:
The meridian of this survey is identical to that of
TAHOE PARADISE UNIT NO. 27.
All distances on curved lines are chord measurements.
All street corners have a 20 foot radius curve at the
property line, unless otherwise shown.
Distances along the frontages of corner lots are to
the intersection of street lines, produced.
ALL NE CORNERS HAVE IRON PIPE AT POINT OF CORNER.

CERTIFICATE OF CORRECTIONS 2021-0033305 05/17/2021

A-110

A-110